

INCIDENT ACTION PLAN SHELLY INCIDENT

CA-KNF-005159
P5 R18J (0505)



OPERATIONAL PERIOD

7/18/2024 0700
to
7/19/2024 0700

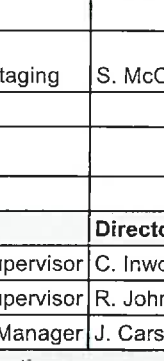


Check-In, IAP, Maps,
Demob, Briefing

Thursday

Thursday

ORGANIZATION ASSIGNMENT LIST (ICS 203)

| | | | | | |
|--|--|---|---|--|---|
| 1. Incident Name: SHELLY | | 2. Operational Period: Date From: 7/18/2024 Time From: 0700 | | Date To: 7/19/2024 Time To: 0700 | |
| 3. Incident Commander(s) and Command Staff: | | | 7. Operation Section: | | |
| IC/UC's | M. Conklin/G. Magaña/J.Andrade(T) | Operations | J. Owings/S. Lauderdale/E. Schwab/J. Flores(T) | | |
| Deputy | N. Johnny/D. Scheurich/P.Russell(T) | Deputy Operations | S. Beacham/J. Fredrick/J. Chester(T) | | |
| Safety Officer | M. Seymour/M. Lipson/C. Hamilton/B. Lee(T) | Night Ops | K.Bohali/R. Szczepanek(T) | | |
| Information Officer | L. Sieliet/S. Bishop/R. Lubben/D. McMillin(T) | Strategic Ops | E. Zanotto | | |
| Liaison Officer | J. Martinez/M. Watson/J. Neumann(T)/T. Gonzalez(T) | Branch | X | O. Esades/R. Wettstein (T) | |
| 4. Agency/Organization Representatives: | | Division/Group | A | G. Lowdermilk/S. Rushing(T) | |
| Agency/Organization | Name | Division/Group | B | C. Matthews/C. Markey(12) | |
| USFS | K. Otto/N. Kelly(T)/D. Carlson(T) | Division/Group | C | J. Carp | |
| CALFIRE | M. Smith | Division/Group | | | |
| CDCR | J. Leventon | Branch | XX | T. Richter/ T. Pederson | |
| Timber Industries | D. Quigley | Division/Group | D | K. Cummings | |
| Karuk Tribe | G. Moon | Division/Group | E | S. Pindell/E. Mattson(T) | |
| READ | M. Meneks/C. Maciel(T) | Division/Group | F | D. Helgeson/B. Boatman(T) | |
| Cultural Specialist | M. Sanchez | Division/Group | | | |
| BIA | S. Santos/G. Perry | Division/Group | | | |
| Quartz Valley Tribe | Chairman Bennett | Branch | XXX | S.Chapman(12)/G.Holguin(12) | |
| | | Division/Group | G | A. Luna/R. Flitt(T) | |
| | | Division/Group | M | R. Noxon | |
| | | Division/Group | T | J. Airhart | |
| | | Division/Group | | | |
| | | Branch | Contingency | L. Wright | |
| | | Division/Group | North | S. Kovacs/J. Stitt(T) | |
| | | Division/Group | South | R. DeCamp/D.Havlina | |
| 5. Planning Section: | | | | | |
| Chief | B. Vergne/G. Garcia/ R. Verdie(T) | Division/Group | | | |
| Deputy | S. Anderson/J. Worden | Branch | FSR | J. Vickers(12)/C. Reginatto(12)(T) D. Denman (12)(Dep.) | |
| Resource Unit | M. Yeun/E. Morgan/M. Thomas/S. Frank(T)/T.Hullquist(T) | Division/Group | FSR North | TBD | |
| Situation Unit | J.Handrick/J. Abeel/K.Parker(T) | Division/Group | FSR South | TBD | |
| Documentation Unit | RIST | Division/Group | | | |
| Demobilization Unit | J. Grisedaie/E. Litteral | Division/Group | | | |
| GISS | B.Hurtado/E.Ball/M.Leveridge/ S.Smith/C. Poli | Staging Area | Yreka Staging | S. McCray(12) | |
| FBAN | P. Doyle/B.Newman | Division/Group | | | |
| IMET | J. Ruthford/J. O'Brien(T) | Division/Group | | | |
| Training | J. Fakehany/S. Vargas/J. Waters(T) | Division/Group | | | |
| HRSP | A. Alvarez | Air Operations Branch | | Director: | K. Beinschroth |
| ARA | J. Webster | Air Support Group Supervisor | | C. Inwood/D. Fulks(T) | |
| 6. Logistics Section | | | | | |
| Chief | S. Ashbach/D. Alicea/J. Warden | Air Tactical Group Supervisor | | R. Johnson | |
| Supply Unit | M. Keck/G. Carney | Siskiyou County Helibase Manager | | J. Carstensen | |
| 8. Finance/Administration Section: | | | | | |
| Facilities Unit | A. Curley/J. Finley/E. Jensen(T) | Chief | R. Lang/L. Wilson/M. White/B. Stirton/J. Tapia/D. Dukart(V) | | |
| Ground Support Unit | C. Syler/C. Christopherson | Time Unit | C. Scott/A. Van Atta/J. Navarro | | |
| Communications Unit | C. Perry/V. Pugliese(T) | Procurement Unit | P. Wood/R. Smith/R. Leanos/R. Kirtland(T) | | |
| Medical Unit | B. Bennewate/R. Sandler/M. Dungan/A. Hendrie | Comp/Claims Unit | D. McClure/J. Chastain | | |
| Food Unit | S. Katanich/M. Rivera | Cost Unit | B. Hughes/E. Molina(T) | | |
| Prepared By: Name: | B. Vergne/G. Garcia | Position/Title: | PSC | Signature: |  |
| ICS 203 | | Date/Time: | 7/17/2024 2300 hours | | |

FIRE WEATHER FORECAST

FORECAST NO. 13

NAME OF INCIDENT: Shelly

PREDICTION FOR: Thursday July 18, 2024

UNIT: Klamath National Forest

TIME AND DATE

SIGNED: Julia E. Ruthford/Jonathan O'Brien

FORECAST ISSUED: 1900 Wednesday 7/17/24

Julia Ruthford IMET - (530) 440-4898

Jonathan O'Brien IMET (t) - (951) 533-8462

WEATHER DISCUSSION: Upper level ridging strengthening inland combined with troughing off the Pacific Northwest coast will bring both warming temperatures and enough SW flow aloft to strengthen the westerly onshore pressure gradient across the NW CA Mtns during the afternoons. The results for the fire area will be moderate valley inversions lasting through mid to late morning, unstable afternoons and enhanced upslope/up-canyon winds shifting to breezy W-NW to SW winds around 1400.

THURSDAY:

WEATHER: Sunny, warmer and continued dry.

MAXIMUM TEMPERATURE: Highs ranging from lower 80s along ridges to mid 90s valleys.

MINIMUM RELATIVE HUMIDITY: 11-14% in valleys to 17-22% along ridges.

20 FOOT WINDS:

SW of the PCT – Up-slope winds of 3-5 mph mid to late morning becoming SW up-canyon 8-11 mph early afternoon with gusts of 14-18 mph mid to late afternoon and up to 25 mph along ridges.

NE of the PCT – Up-slope winds of 2-4 mph becoming SE to NE up-canyon 4-7 mph early afternoon then reversing to SW to NW around 1300 and increasing to 12-16 mph with gusts to 20-25 mph late afternoon through evening along ridges and down-canyon winds of 5-7 mph drainage bottoms.

Scott Valley – E-SE winds 3-5 mph in the morning becoming SW to NW 5-7 mph around 1200 then NW 10-15 mph with gusts 18-20 mph mid-afternoon and into the evening.

STABILITY: Valley inversions mixing out 1000-1100, then unstable in the afternoon.

CHANCE OF THUNDERSTORMS: 0%

SMOKE TRANSPORT WIND: SW to NW 15-20 mph

THURSDAY NIGHT:

WEATHER: Mild and dry with thermal belts along mid-slopes and ridges.

MINIMUM TEMPERATURE: Mid 60s along slopes & ridges and upper 50s in valleys.

MAXIMUM RELATIVE HUMIDITY: Around 30% slopes & ridges and 40-50% valleys.

20 FOOT WINDS: W to NW 10-15 mph diminishing around 2100 then becoming E-NE 3-5 mph along ridges with downslope/down-valley 2-4 mph elsewhere.

STABILITY: Smoke settling into valley inversions.

CHANCE OF THUNDERSTORMS: 0%

SMOKE TRANSPORT WIND: NW 10 mph then light E-NE

FRIDAY: A warming & drying trend continue on Fri with highs in the mid 80s along ridges and upper 90s in valleys and Min RHs from the lower teens in valleys to upper teens on ridges with overnight RH recoveries of 25-30% along mid & upper slopes and 40-50% lower slopes and valleys. Winds will continue to follow the same diurnal pattern of enhanced up-canyon winds through midday then a shift SW to W-NW winds of 10-15 mph with localized gusts of 20-30 mph along higher ridges in the afternoon.

OUTLOOK FOR SATURDAY THROUGH MONDAY: Upper level ridging will continue to strengthen east of the area through early next week with temperatures continuing to warm in response. A small upper level disturbance crossing the area may bring a chance of thunderstorms Sat or Sat Night. Breezy afternoon & evening westerly winds will continue with Min RHs generally remaining in the teens.

Please email weather observations to julia.ruthford@usda.gov or text them to 530-440-4898. Thanks!

FIRE BEHAVIOR FORECAST

| | |
|-----------------------------------|---|
| FORECAST NUMBER: 13 | TYPE OF FIRE: Wildfire |
| FIRE NAME: Shelly | OPERATIONAL PERIOD: 07/18 Day/Night |
| DATE ISSUED: July 17, 2024 | TIME ISSUED: 1830 |
| UNIT: CA-KNF | SIGNED: /s/ Brian Newman FBAN 530-708-2706 |

WEATHER SUMMARY (See Fire Wx Forecast)

TOPOGRAPHY: Elevations: 2800'-7,400' **Slopes:** 0%-100+% (0°- 68°degrees)

| <p>FUELS: Key Fuel Models, Fuel Moistures, FDR</p> <table border="1" style="width: 100%; border-collapse: collapse;"> <tr> <td style="width: 15%;">Grass/Shrub</td> <td style="width: 15%;">GS2</td> <td rowspan="5" style="width: 15%; vertical-align: top;"> Forecasted PSA04: NFDR (Y) Percentile ERC: 57 (▼ 3) 96th BI: 38 (▼ 4) 90th *Note: FM %s in left column have been adjusted relative to Blue Ridge values. </td> </tr> <tr> <td>Timber</td> <td>TU5</td> </tr> <tr> <td>FDFM (1hr)</td> <td>6 % NC*</td> </tr> <tr> <td>10-hr (%)</td> <td>8% NC*</td> </tr> <tr> <td>100-hr (%)</td> <td>7 % NC*</td> </tr> <tr> <td>1000-hr(%)</td> <td><10 %*</td> <td></td> </tr> <tr> <td colspan="2" style="text-align: center;"> Live Fuels (Seasonal grasses) </td> <td style="text-align: center;"> ¾ to fully cured </td> </tr> </table> <p style="font-size: small;">Blue Ridge – KNF (40203) / Predictive Service Area: NC04 - Northwestern Mtn. NC=No change, ▲up, ▼down</p> | Grass/Shrub | GS2 | Forecasted PSA04: NFDR (Y) Percentile ERC: 57 (▼ 3) 96th BI: 38 (▼ 4) 90th *Note: FM %s in left column have been adjusted relative to Blue Ridge values. | Timber | TU5 | FDFM (1hr) | 6 % NC* | 10-hr (%) | 8% NC* | 100-hr (%) | 7 % NC* | 1000-hr(%) | <10 %* | | Live Fuels (Seasonal grasses) | | ¾ to fully cured | <p>Fire Behavior (for <u>new starts</u> or <u>unburned areas</u>)</p> <p>Probability of Ignition: 88% Unshaded / 67% Shaded Spotting Distance: up to 0.3 mile (short range) Values below use 40% slope and assume upslope spread.</p> <table border="1" style="width: 100%; border-collapse: collapse;"> <thead> <tr> <th rowspan="2">Fuel Model</th> <th colspan="2">Day</th> <th colspan="3">Night</th> </tr> <tr> <th>FL (Ft.)</th> <th>ROS (Ch/Hr)</th> <th>Fuel Model</th> <th>FL (Ft.)</th> <th>ROS (Ch/Hr)</th> </tr> </thead> <tbody> <tr> <td>Grass/Shrub</td> <td>5-10</td> <td>21-50</td> <td>GS2</td> <td>1-7</td> <td>1-45</td> </tr> <tr> <td>Timber</td> <td>1-10</td> <td>1-16</td> <td>TU5</td> <td>1-7</td> <td>1-7</td> </tr> </tbody> </table> <p>Live fuel moistures in shrubs and trees, having passed green-up phase.</p> | Fuel Model | Day | | Night | | | FL (Ft.) | ROS (Ch/Hr) | Fuel Model | FL (Ft.) | ROS (Ch/Hr) | Grass/Shrub | 5-10 | 21-50 | GS2 | 1-7 | 1-45 | Timber | 1-10 | 1-16 | TU5 | 1-7 | 1-7 |
|---|--------------------|---|---|---------------|-------------|-------------------|----------------|------------------|---------------|-------------------|----------------|-------------------|------------------|--|--------------------------------------|--|-------------------------|--|------------|-----|--|-------|--|--|----------|-------------|------------|----------|-------------|-------------|------|-------|-----|-----|------|--------|------|------|-----|-----|-----|
| Grass/Shrub | GS2 | Forecasted PSA04: NFDR (Y) Percentile ERC: 57 (▼ 3) 96th BI: 38 (▼ 4) 90th *Note: FM %s in left column have been adjusted relative to Blue Ridge values. | | | | | | | | | | | | | | | | | | | | | | | | | | | | | | | | | | | | | | | |
| Timber | TU5 | | | | | | | | | | | | | | | | | | | | | | | | | | | | | | | | | | | | | | | | |
| FDFM (1hr) | 6 % NC* | | | | | | | | | | | | | | | | | | | | | | | | | | | | | | | | | | | | | | | | |
| 10-hr (%) | 8% NC* | | | | | | | | | | | | | | | | | | | | | | | | | | | | | | | | | | | | | | | | |
| 100-hr (%) | 7 % NC* | | | | | | | | | | | | | | | | | | | | | | | | | | | | | | | | | | | | | | | | |
| 1000-hr(%) | <10 %* | | | | | | | | | | | | | | | | | | | | | | | | | | | | | | | | | | | | | | | | |
| Live Fuels (Seasonal grasses) | | ¾ to fully cured | | | | | | | | | | | | | | | | | | | | | | | | | | | | | | | | | | | | | | | |
| Fuel Model | Day | | Night | | | | | | | | | | | | | | | | | | | | | | | | | | | | | | | | | | | | | | |
| | FL (Ft.) | ROS (Ch/Hr) | Fuel Model | FL (Ft.) | ROS (Ch/Hr) | | | | | | | | | | | | | | | | | | | | | | | | | | | | | | | | | | | | |
| Grass/Shrub | 5-10 | 21-50 | GS2 | 1-7 | 1-45 | | | | | | | | | | | | | | | | | | | | | | | | | | | | | | | | | | | | |
| Timber | 1-10 | 1-16 | TU5 | 1-7 | 1-7 | | | | | | | | | | | | | | | | | | | | | | | | | | | | | | | | | | | | |

FIRE BEHAVIOR

GENERAL:

- The afternoon heating and strong southerly winds have increased the availability of 1- and 10-hour fuels for consumption in the afternoon. Southerly slopes and exposed ridges will increase activity earlier in the burn period.
- Southerly winds particularly over ridges and aligned drainages will impact the fire with potential for increased activity in the interior areas. Expect to see continued creeping and smoldering with occasional active flames, especially in the heavier fuels that were not affected by the recent precipitation.
- Indices are still elevated for this time of year, but have reduced slightly, moderating fire behavior. Interior activity or new ignitions outside the current perimeter on the upper slopes and wind-aligned drainages could be see active fire behavior.
- With probability of ignition near 90%, be aware of heavy equipment working in the green that could cause new ignitions

SPECIFIC:

Branch X, DIVS A, B, C:

Upper/westerly portions of Kidder Cr./Mill Cr. will continue to see interior activity in the timbered fuels, primarily smoldering and creeping in heavy dead and down, stump holes and snags. This activity will not challenge control lines through the operational period.

Branch XX, DIVS D, E, F:

Portions of upper Patterson Creek will continue to consume heavy's and activity may pick up in the afternoon with clearing and southerly winds, though winds should generally push the fire downslope into the burn. The increase in activity has minimal chances of becoming aligned with slope and wind and should not challenge control lines.

Branch XXX, DIVS G, M, T:

Lowest fire perimeter in Right Hand North Fork Salmon River, just west of Bear Wallow Peak, may have wind funneling with southerly winds, potential for fire to spot across river or move up-canyon later in the afternoon. The area has the highest potential for challenging control lines but expected conditions do not favor significant growth in this area.

AIR OPERATIONS: Inversion in the morning, lifting out by mid to late morning.
Sunrise: 5:53am, Sunset: 8:41pm, Daylength: 14 hours, 49 minutes, (-2 min)

SAFETY: Snags/ trees can burn in the upper portions. Look up! Just because there is no fire in the lower trunk doesn't mean it is safe.

| | | | | | |
|--------------------------|--|--------------------------|--|--------------------------------|--|
| 1. INCIDENT NAME: | | 2. DATE PREPARED: | | 3. TIME PREPARED: | |
| SHELLY INCIDENT | | July 17, 2024 | | 1400 | |
| 4. PREPARED BY: | | 5. LEADER NAME: | | 6. OPERATIONAL PERIOD: | |
| David Morrison SOF1 | | David Morrison SOF1 | | 7/18/2024 0700 TO 7/19/24 0700 | |

SAFETY MESSAGE

AVOID COMPLACENCY, BE ALERT AND AWARE OF YOUR SURROUNDINGS.

- Ensure all crew assigned receive a safety briefing.
- Use caution on steep slopes and rocky areas. Watch your footing and be alert for rolling material below.
- Use caution when working around heavy equipment. Ensure communication with operator.
- Ensure to abide by all posted speed signs, driving within safe limits.
- With repopulation, civilian traffic will multiply, be alert while on public highways and roads. Use appropriate warning flashers and lights.

Ash Pit Awareness

- Observe the remnants of the vegetation model.
- Look for depressions in the ground.
- Use your hand tool to sound your way into the burn.
- White ash may be an indicator of an ash pit.
- Ensure that PPE is worn and properly fitted.



SOF1 David Morrison

ASSIGNMENT LIST (ICS 204 WF)

CONTROLLED UNCLASSIFIED
INFORMATION//BASIC

| | | |
|--|---|--|
| 1. Incident Name: <p style="text-align: center; font-size: 1.2em;">SHELLY</p> | 2. Operational Period: Date From: 07/18/24 Date To: 07/19/24 Time From: 0700 Time To: 0700 | 3. Branch Division <p style="text-align: center; font-size: 1.5em;">X A</p> <p style="text-align: center;">Page 1 of 2 Alpha</p> |
|--|---|--|

| | |
|---|---|
| 4. Operations Personnel: | |
| Operations Section Chief: J. Owings/S. Lauderdale/E. Schwab/J. Flores(T) | Night Ops: K.Bohall/R. Szczepanek(T) |
| Branch Director: O. Esades/R. Wettstein (T) | Branch Safety: |
| Division/Group Supervisor: G. Lowdermilk/S. Rushing(T) | Air Attack: |

| 5. Resources Assigned: | ** Resources Below in Bold are 12 Hour ** | | | | | | |
|---------------------------|---|------|-----------|-----------|-----------|-----------|--------------------|
| Resource Identifier | ALS | LWD | Leader | Personnel | Request # | Hours | Reporting Location |
| HC1 TRINITY IHC | | 7/21 | Dias | 22 | C-25 | 0700-1900 | Etna ICP |
| HC1 KLAMATH IHC | | 7/21 | Owensbey | 23 | C-28 | 0700-1900 | Etna ICP |
| HC1 REDMOND IHC | | 7/18 | Varon | 20 | C-42 | 0700-1900 | Etna ICP |
| HC2IA BLM FOLSOM LAKE | | 7/28 | Hooper | 20 | C-81 | 0700-1900 | Etna ICP |
| S/T ENG3 KNF 3600C | | 7/20 | Leckness | 29 | E-227 | 0700-1900 | Etna ICP |
| DOZ2 DEAN SMILEY | | 7/29 | Brandon | 2 | E-81 | 0700-1900 | Etna ICP |
| FMOD HOMELAND | | 7/19 | Ingersoll | 2 | O-46 | 0700-1900 | Etna ICP |
| FMOD WEST COAST CUTTING 1 | | 8/6 | Ancel | 2 | O-157 | 0700-1900 | Etna ICP |
| FMOD RED FLAG 1 | | 7/20 | Smith | 2 | O-159 | 0700-1900 | Etna ICP |
| FMOD RED FLAG 2 | | 7/21 | Fullerton | 2 | O-186 | 0700-1900 | Etna ICP |
| TFLD HAUPT | | 7/19 | Haupt | 1 | O-50 | 0700-1900 | Etna ICP |
| SOFR HABECK | | 7/22 | Habeck | 1 | O-212 | 1900-0700 | Etna ICP |
| SOFR(T) AULD | | 7/22 | Auld | 1 | O-209 | 0700-1900 | Etna ICP |
| REMS 1 | X | 7/26 | Walker | 4 | O-54 | 0700-1900 | Etna ICP |
| REMS 8 | X | 7/25 | Gale | 4 | O-20192 | 0700-1900 | Etna ICP |
| | | | | | | | |
| | | | | | | | |
| | | | | | | | |

6. Work Assignments:
 Improve direct control line from HS 7 along the ridge towards DP 14, DP16, Campbell and Cliff Lakes to limit northern fire progression.
 Construct direct and indirect control lines from the northwestern edge and Kidder Creek Rd to the south towards Division T.
 Mop up the slopover in Mill Creek to keep fire in current lines within Division A between the A/B and A/T division breaks.

7. Special Instructions:
 Identify potential drop points, landing zones, sling site and spike camp locations.
 24-hour resources contact Night Ops directly for direction after 1900.
 All resources shall abide by posted speed limits. While parked on the shoulder, vehicles must be completely out of lanes.

8. Communications

| Name | Ch | Function | Rx Freq | Rx Tone | Tx Freq | Tx Tone | Mode | Notes |
|----------|----|----------|----------|-------------|----------|-------------|------|--------------|
| NIFC C20 | 5 | COMMAND | 172.5500 | (T3) 131.8 | 162.1875 | (T3) 131.8 | A | Boulder Peak |
| CDF T14 | 6 | TACTICAL | 159.3075 | (T16) 192.8 | 159.3075 | (T16) 192.8 | A | |
| A/G TAC | 14 | A/G TAC | 168.3750 | 0.0 | 168.3750 | 0.0 | A | |
| CALCORD | 15 | TACTICAL | 156.0750 | (T6) 156.7 | 156.0750 | (T6) 156.7 | A | |
| AIRGUARD | 16 | A/G | 168.6250 | 0.0 | 168.6250 | (T1) 110.9 | A | |

| | | | |
|------------------------------|--|----------------------|------------|
| 9. Prepared by: Name: | M. Yeun/E. Morgan/M. Thomas/S. Frank(T)/T.Hullquist(T) | RESL | Signature: |
| ICS 204 | Date/Time: 7/17/2024 2200 | Personnel Count: 135 | |

ASSIGNMENT LIST (ICS 204 WF)

CONTROLLED UNCLASSIFIED
INFORMATION//BASIC

| | | |
|---|---|---|
| 1. Incident Name: SHELLY | 2. Operational Period: Date From: 07/18/24 Date To: 07/19/24 Time From: 0700 Time To: 0700 | 3. Branch Division XXX G |
| | | Page 1 of 2 Golf |


| | | |
|---|---|--|
| 4. Operations Personnel: | | |
| Operations Section Chief: J. Owings/S. Lauderdale/E. Schwab/J. Flores(T) | Night Ops: K.Bohall/R. Szczepanek(T) | |
| Branch Director: S.Chapman(12)/G.Holguin(12) | Branch Safety: | |
| Division/Group Supervisor: A. Luna/R. Flitt(T) | Air Attack: | |

| 5. Resources Assigned: | ** Resources Below in Bold are 12 Hour ** | | | | | | | |
|-------------------------------|--|------|--------------------|-----------|--------------|------------------|---------------------|--|
| Resource Identifier | ALS | LWD | Leader | Personnel | Request # | Hours | Reporting Location | |
| ENG3 DURANGO | | 7/23 | Kristiansen | 5 | E-118 | 0700-1900 | Whites Gulch | |
| ENG3 ALPINE 7 | | 7/22 | Vigil | 3 | E-128 | 0700-1900 | Whites Gulch | |
| ENG3 ALPINE 8 | | 7/22 | Nunez | 3 | E-129 | 0700-1900 | Whites Gulch | |
| ENG3 J3 CONTRACTING 5 | | 7/23 | Tenaglia | 3 | E-132 | 0700-1900 | Whites Gulch | |
| ENG6 FIRE SOLUTIONS | | 7/22 | Mestrovic | 3 | E-94 | 0700-1900 | Whites Gulch | |
| ENG6 ROCKY POINT | | 7/22 | Soares | 3 | E-95 | 0700-1900 | Whites Gulch | |
| ENG6 BLUFFDALE E694 | | 7/22 | Reglia | 3 | E-149 | 0700-1900 | Whites Gulch | |
| WTT2 SHF 266 | | 7/22 | Eason | 2 | E-178 | 0700-1900 | Whites Gulch | |
| WTS2 KENT JOHNSON | | 7/21 | Brown | 1 | E-92 | 0700-1900 | Whites Gulch | |
| MAST HACKER | | 7/25 | Babel | 2 | E-290 | 0700-1900 | Whites Gulch | |
| CHIP GOD AND COUNTRY | | 7/28 | Knott | 3 | E-390 | 0700-1900 | Whites Gulch | |
| FMOD C&K WILDLAND 1 | | 8/4 | Schuyler | 2 | O-155 | 0700-1900 | Whites Gulch | |
| FMOD C&K WILDLAND 2 | | 8/6 | Pederson | 2 | O-156 | 0700-1900 | Whites Gulch | |
| FMOD WEST COAST CUTTING 2 | | 8/5 | Agee | 2 | O-158 | 0700-1900 | Whites Gulch | |
| FMOD NORTH ZONE FALLERS 1 | | 7/31 | Hall | 2 | O-187 | 0700-1900 | Whites Gulch | |
| TFLD NESS JR | | 7/22 | Ness Jr | 1 | O-234 | 0700-1900 | Whites Gulch | |
| HEQB GAILEY | | 7/22 | Gailey | 1 | O-228 | 0700-1900 | Whites Gulch | |
| HEQB(T) ROAM | | 7/22 | Roam | 1 | O-244 | 0700-1900 | Whites Gulch | |

6. Work Assignments:
 Construct and improve indirect control line from Sawyers Bar Rd north on Snoozer Ridge to the PCT to be utilized as a secondary control line.
 Improve Sawyers Bar Rd from F/G break to the G/M break to be utilized as secondary control lines.

7. Special Instructions:
 Backhaul trash and excess equipment to helibase daily.
 Identify potential drop points, landing zones, sling site and spike camp locations.
 24-hour resources contact Night Ops directly for direction after 1900.
 All resources shall abide by posted speed limits. While parked on the shoulder, vehicles must be completely out of lanes.

| 8. Communications | | | | | | | | |
|--------------------------|------|----------|----------|------------|----------|------------|------|--------------|
| Name | Ch | Function | Rx Freq | Rx Tone | Tx Freq | Tx Tone | Mode | Notes |
| NIFC C11 | P2.3 | COMMAND | 170.6875 | (T3) 131.8 | 166.5750 | (T3) 131.8 | A | Whisky Butte |
| NIFC T1 | P2.6 | TACTICAL | 168.0500 | (T3) 131.8 | 168.0500 | (T3) 131.8 | A | |
| A/G TAC | 14 | A/G TAC | 168.3750 | 0.0 | 168.3750 | 0.0 | A | |
| CALCORD | 15 | TACTICAL | 156.0750 | (T6) 156.7 | 156.0750 | (T6) 156.7 | A | |
| AIRGUARD | 16 | A/G | 168.6250 | 0.0 | 168.6250 | (T1) 110.9 | A | |

9. Prepared by: Name: M. Yeun/E. Morgan/M. Thomas/S. Frank(T)/T.Hullquist(T)
 RESL Signature: 

ICS 204 Date/Time: 7/17/2024 2200 Personnel Count: 42

ASSIGNMENT LIST (ICS 204 WF)

CONTROLLED UNCLASSIFIED
INFORMATION//BASIC

| | | | |
|--------------------------|--|------------------|-----------------|
| 1. Incident Name: | 2. Operational Period: | 3. Branch | Division |
| SHELLY | Date From: 07/18/24 Date To: 07/19/24 Time From: 0700 Time To: 0700 | XXX | M |

| | | | |
|---|--|---|------|
| 4. Operations Personnel: | | Page 1 of 2 | Mike |
| Operations Section Chief: J. Owings/S. Lauderdale/E. Schwab/J. Flores(T) | | Night Ops: K.Bohall/R. Szczepanek(T) | |
| Branch Director: S.Chapman(12)/G.Holguin(12) | | Branch Safety: | |
| Division/Group Supervisor: R. Noxon | | Air Attack: | |

| 5. Resources Assigned: | | ** Resources Below in Bold are 12 Hour ** | | | | | |
|-------------------------------|----------|--|---------------------|-----------|--------------|------------------|---------------------|
| Resource Identifier | ALS | LWD | Leader | Personnel | Request # | Hours | Reporting Location |
| WFM GRASSLAKE | | 7/29 | Johnson | 9 | O-460 | 0700-1900 | Whites Gulch |
| HC2IA UKONOM | | 7/21 | Peters | 21 | C-24 | 0700-1900 | Whites Gulch |
| HC2 TORRES CONTRACTING | | 7/24 | Lopez | 20 | C-71 | 0700-1900 | Whites Gulch |
| HC2 NORTH PACIFIC | | 7/25 | Perez | 20 | C-72 | 0700-1900 | Whites Gulch |
| ENG3 KS JOX E81 | | 7/24 | Neis | 3 | E-121 | 0700-1900 | Whites Gulch |
| ENG6 BROCKWAY | | 7/23 | Colton | 3 | E-155 | 0700-1900 | Whites Gulch |
| ENG6 AAA FORESTRY | | 7/24 | Martin | 3 | E-157 | 0700-1900 | Whites Gulch |
| MAST DAVIS CORPORATION | | 7/23 | Stafford | 2 | E-292 | 0700-1900 | Whites Gulch |
| TFLD DEWEY | | 7/24 | Dewey | 1 | O-294 | 0700-1900 | Whites Gulch |
| TFLD(T) CORBIN | | 7/25 | Tyler Corbin | 1 | O-323 | 0700-1900 | Whites Gulch |
| HEQB PALACIOS | | 7/23 | Palacios | 1 | O-230 | 0700-1900 | Whites Gulch |
| HEQB(T) MAYFIELD | | 7/25 | Mayfield | 1 | O-299 | 0700-1900 | Whites Gulch |
| PACK ANDREWS | | | Andrews | | | 0700-1900 | Whites Gulch |
| PACK SPRIK | | 7/24 | Sprik | 1 | O-101 | 0700-1900 | Whites Gulch |
| PACK ROOS | | 7/24 | Roos | 1 | O-224 | 0700-1900 | Whites Gulch |
| REMS 5 | X | 7/22 | Sepulveda | 4 | O-251 | 0700-1900 | Whites Gulch |
| | | | | | | | |
| | | | | | | | |

6. Work Assignments:
Construct indirect control lines from DP73 to Tanners Peak to be utilized as secondary control lines.

7. Special Instructions:
Identify potential drop points, landing zones, sling site and spike camp locations.
24-hour resources contact Night Ops directly for direction after 1900.

All resources shall abide by posted speed limits. While parked on the shoulder, vehicles must be completely out of lanes.

| 8. Communications | | | | | | | | |
|--------------------------|------|----------|----------|------------|----------|------------|------|--------------|
| Name | Ch | Function | Rx Freq | Rx Tone | Tx Freq | Tx Tone | Mode | Notes |
| NIFC C3 | P2.1 | COMMAND | 170.4250 | (T3) 131.8 | 168.0750 | (T3) 131.8 | A | English Peak |
| NIFC T2 | P2.7 | TACTICAL | 168.2000 | (T3) 131.8 | 168.2000 | (T3) 131.8 | A | |
| A/G TAC | 14 | A/G TAC | 168.3750 | 0.0 | 168.3750 | 0.0 | A | |
| CALCORD | 15 | TACTICAL | 156.0750 | (T6) 156.7 | 156.0750 | (T6) 156.7 | A | |
| AIRGUARD | 16 | A/G | 168.6250 | 0.0 | 168.6250 | (T1) 110.9 | A | |

9. Prepared by: Name: M. Yeun/E. Morgan/M. Thomas/S. Frank(T)/T.Hullquist(T)
RESL
Signature: **Date/Time:** 7/17/2024 2200
Personnel Count: 91

ASSIGNMENT LIST (ICS 204 WF)

CONTROLLED UNCLASSIFIED
INFORMATION//BASIC

| | | |
|---|---|--|
| 1. Incident Name: <p style="text-align: center; font-size: 1.2em;">SHELLY</p> | 2. Operational Period: Date From: 07/18/24 Date To: 07/19/24 Time From: 0700 Time To: 0700 | 3. Branch Division Contingency North |
|---|---|--|

| | | |
|---|---|-------------|
| 4. Operations Personnel: | | Page 2 of 3 |
| Operations Section Chief: J. Owings/S. Lauderdale/E. Schwab/J. Flores(T) | Night Ops: K.Bohall/R. Szczepanek(T) | |
| Branch Director: L. Wright | Branch Safety: | |
| Division/Group Supervisor: S. Kovacs/J. Stitt(T) | Air Attack: | |

| 5. Resources Assigned: | | ** Resources Below in Bold are 12 Hour ** | | | | | |
|---------------------------|-----|---|------------------|-----------|--------------|-----------|--------------------|
| Resource Identifier | ALS | LWD | Leader | Personnel | Request # | Hours | Reporting Location |
| WTS2 CATTLE LACK 1 | | 7/22 | Enlow | 1 | E-90 | 0700-1900 | Etna ICP |
| WTS2 CATTLE LACK 2 | | 7/22 | Shapp | 1 | E-91 | 0700-1900 | Etna ICP |
| DOZ2 LET-ER-BUCK 1 | | 7/21 | Lassen | 1 | E-76 | 0700-1900 | Etna ICP |
| DOZ2 BAR-G 1 | | 7/26 | Bunker | 2 | E-85 | 0700-1900 | Etna ICP |
| DOZ2 EVANS BROTHERS | | 7/30 | Patton | 2 | E-87 | 0700-1900 | Etna ICP |
| DOZ2 TYSON MORGAN | | 7/23 | Ebejeoje | 2 | E-215 | 0700-1900 | Etna ICP |
| CHIP NORTH ZONE 1 | | 7/21 | Demery | 3 | E-56 | 0700-1900 | Etna ICP |
| CHIP NORTH PACIFIC 1 | | 7/26 | Servin | 3 | E-388 | 0700-1900 | Etna ICP |
| FMOD TOMS TIMBER | | 8/6 | Josh | 2 | O-154 | 0700-1900 | Etna ICP |
| FMOD LONG GROUND | | 7/21 | Bokish | 2 | O-160 | 0700-1900 | Etna ICP |
| FMOD GOD & COUNTRY 1 | | 7/21 | Barny | 2 | O-162 | 0700-1900 | Etna ICP |
| FMOD GOD & COUNTRY 2 | | 7/21 | Robbins | 2 | O-163 | 0700-1900 | Etna ICP |
| FMOD NORTH ZONE FALLERS 2 | | 7/21 | Bennett | 2 | O-188 | 0700-1900 | Etna ICP |
| TFLD PERRAULT | | 7/21 | Perrault | 1 | O-165 | 0700-1900 | Etna ICP |
| TFLD DELSANTOS | | 7/22 | Delsantos | 1 | O-232 | 0700-1900 | Etna ICP |
| TFLD LICHTER | | 7/22 | Lichter | 1 | O-235 | 0700-1900 | Etna ICP |
| TFLD NEUMAN | | 7/22 | Neuman | 1 | O-248 | 0700-1900 | Etna ICP |
| TFLD(T) DAWSON | | 7/21 | Dawson | 1 | O-164 | 0700-1900 | Etna ICP |

6. Work Assignments:
Identify and construct potential contingency lines to limit the fire progression.
Improve Scott River Rd to limit northern fire progression.

7. Special Instructions:
Identify and establish water sources.
Do not use hydrants as water sources unless conducting direct suppression around residential area.

All resources shall abide by posted speed limits. While parked on the shoulder, vehicles must be completely out of lanes.

| 8. Communications | | | | | | | | |
|-------------------|------|----------|----------|------------|----------|------------|------|-------------------|
| Name | Ch | Function | Rx Freq | Rx Tone | Tx Freq | Tx Tone | Mode | Notes |
| NIFC C20 | P2.5 | COMMAND | 172.5500 | (T3) 131.8 | 162.1875 | (T3) 131.8 | A | Boulder Peak |
| NIFC T4 | P2.9 | TACTICAL | 166.7250 | (T3) 131.8 | 166.7250 | (T3) 131.8 | A | North Contingency |
| A/G TAC | 14 | A/G TAC | 168.3750 | 0.0 | 168.3750 | 0.0 | A | |
| CALCORD | 15 | TACTICAL | 156.0750 | (T6) 156.7 | 156.0750 | (T6) 156.7 | A | |
| AIRGUARD | 16 | A/G | 168.6250 | 0.0 | 168.6250 | (T1) 110.9 | A | |

| | |
|------------------------------|--|
| 9. Prepared by: Name: | M. Yeun/E. Morgan/M. Thomas/S. Frank(T)/T.Hullquist(T) |
| | Signature: |
| | RESL |
| ICS 204 | Date/Time: 7/17/2024 2200 |
| | Personnel Count: 30 |

ASSIGNMENT LIST (ICS 204 WF)

CONTROLLED UNCLASSIFIED
INFORMATION//BASIC

| | | |
|---|---|--|
| 1. Incident Name: <p style="text-align: center; font-size: 1.2em;">SHELLY</p> | 2. Operational Period: Date From: 07/18/24 Date To: 07/19/24 Time From: 0700 Time To: 0700 | 3. Branch Division Contingency South |
|---|---|--|

Page 1 of 2

| | |
|---|---|
| 4. Operations Personnel: | |
| Operations Section Chief: J. Owings/S. Lauderdale/E. Schwab/J. Flores(T) | Night Ops: K.Bohall/R. Szczepanek(T) |
| Branch Director: L. Wright | Branch Safety: |
| Division/Group Supervisor: R. DeCamp/D.Haviina | Air Attack: |

| 5. Resources Assigned: | ** Resources Below in Bold are 12 Hour ** | | | | | | | |
|-------------------------------|--|------|-----------|-----------|-----------|-----------|--------------------|--|
| Resource Identifier | ALS | LWD | Leader | Personnel | Request # | Hours | Reporting Location | |
| HC2IA GRAYBACK FORESTRY | | 7/21 | Rhinehart | 20 | C-29 | 0700-1900 | Etna ICP | |
| HC2 PACIFIC OASIS 1 | | 7/28 | Spriggs | 20 | C-77 | 0700-1900 | Etna ICP | |
| ENG3 J3 CONTRACTING 2 | | 7/23 | Wallace | 3 | E-113 | 0700-1900 | Etna ICP | |
| ENG3 J3 CONTRACTING 3 | | 7/23 | Bariel | 3 | E-115 | 0700-1900 | Etna ICP | |
| ENG3 WILDFIRE RESOURCES | | 7/23 | Fowler | 3 | E-124 | 0700-1900 | Etna ICP | |
| ENG3 TH1 | | 7/23 | McCrea | 3 | E-125 | 0700-1900 | Etna ICP | |
| ENG3 ROCKY MOUNTAIN FIRE | | 7/23 | Stanford | 3 | E-126 | 0700-1900 | Etna ICP | |
| ENG3 OUTBACK 1 | | 7/22 | Terry | 3 | E-130 | 0700-1900 | Etna ICP | |
| ENG3 OUTBACK 2 | | 7/22 | Beal | 3 | E-131 | 0700-1900 | Etna ICP | |
| ENG3 J3 CONTRACTING 8 | | 7/23 | Klotz | 3 | E-135 | 0700-1900 | Etna ICP | |
| ENG3 J3 CONTRACTING 9 | | 7/23 | Desrosier | 3 | E-136 | 0700-1900 | Etna ICP | |
| ENG6 ROARING FORK | | 7/22 | Blangsted | 4 | E-148 | 0700-1900 | Etna ICP | |
| ENG6 MES 6217 | | 7/28 | Nichols | 4 | E-150 | 0700-1900 | Etna ICP | |
| ENG6 BLACK HAWK | | 7/23 | Jansen | 3 | E-152 | 0700-1900 | Etna ICP | |
| ENG6 NATIONAL FIRE | | 7/23 | Arenas | 3 | E-153 | 0700-1900 | Etna ICP | |
| ENG6 WOODPECKER | | 7/22 | Imel | 3 | E-164 | 0700-1900 | Etna ICP | |
| DOZ2 JOHNSON | | 7/21 | Maxwell | 2 | E-78 | 0700-1900 | Etna ICP | |
| DOZ2 PACIFIC RIDGELINE 2 | | 7/23 | Britt | 2 | E-218 | 0700-1900 | Etna ICP | |

6. Work Assignments:
 Identify and construct potential contingency lines to limit the fire progression.
 Improve Sawyers Bar Rd from E/F break to the south to limit southern and eastern fire progression.
 Improve the roads into the Ruffy Gap.
 Begin suppression repair to lines constructed south of Sawyers Bar Rd.

7. Special Instructions:
 Identify and establish water sources.
 Do not use hydrants as water sources unless conducting direct suppression around residential area.
 All resources shall abide by posted speed limits. While parked on the shoulder, vehicles must be completely out of lanes.

| 8. Communications | | | | | | | | |
|--------------------------|-------|----------|----------|------------|----------|------------|------|-------------------|
| Name | Ch | Function | Rx Freq | Rx Tone | Tx Freq | Tx Tone | Mode | Notes |
| NIFC C11 | P2.3 | COMMAND | 170.6875 | (T3) 131.8 | 166.5750 | (T3) 131.8 | A | Whisky Butte |
| NIFC T5 | P2.10 | TACTICAL | 166.7750 | (T3) 131.8 | 166.7750 | (T3) 131.8 | A | South Contingency |
| A/G TAC | 14 | A/G TAC | 168.3750 | 0.0 | 168.3750 | 0.0 | A | |
| CALCORD | 15 | TACTICAL | 156.0750 | (T6) 156.7 | 156.0750 | (T6) 156.7 | A | |
| AIRGUARD | 16 | A/G | 168.6250 | 0.0 | 168.6250 | (T1) 110.9 | A | |

9. Prepared by: Name: M. Yeun/E. Morgan/M. Thomas/S. Frank(T)/T.Hullquist(T)
 RESL
 Signature:
 Date/Time: 7/17/2024 2200 Personnel Count: 88


ICS 205 - INCIDENT RADIO COMMUNICATIONS PLAN

1. Incident Name: Shelly Fire SH717 Z1
Incident Channels

2. Date/Time Prepared Date: 07/17/2024 Time: 1930
3. Operational Period: Date From: 07/18/24 Date To: 07/19/24
 Time From: 0700 Time To: 0700

| 4. Communications | | Name | Assigned To | Rx Freq | Rx Tone | Tx Freq | Tx Tone | Mode | Notes |
|-------------------|----------|----------|-------------|----------|-------------|----------|-------------|------|---------------------|
| 1 | COMMAND | NIFC C3 | ALL DIVS | 170.4250 | (T3) 131.8 | 168.0750 | (T3) 131.8 | A | English Peak |
| 2 | COMMAND | NIFC C10 | ALL DIVS | 170.4125 | (T3) 131.8 | 165.9625 | (T3) 131.8 | A | Quartz Lookout |
| 3 | COMMAND | NIFC C11 | ALL DIVS | 170.6875 | (T3) 131.8 | 166.5750 | (T3) 131.8 | A | Whisky Butte |
| 4 | COMMAND | NIFC C12 | ALL DIVS | 173.0375 | (T3) 131.8 | 167.3250 | (T3) 131.8 | A | Helispot 5 |
| 5 | COMMAND | NIFC C20 | ALL DIVS | 172.5500 | (T3) 131.8 | 162.1875 | (T3) 131.8 | A | Boulder Peak |
| 6 | TACTICAL | CDF T14 | DIV A | 159.3075 | (T16) 192.8 | 159.3075 | (T16) 192.8 | A | |
| 7 | TACTICAL | CDF T15 | DIV B | 151.1825 | (T16) 192.8 | 151.1825 | (T16) 192.8 | A | |
| 8 | TACTICAL | CDF T24 | DIV C | 159.3375 | (T16) 192.8 | 159.3375 | (T16) 192.8 | A | |
| 9 | TACTICAL | CDF T35 | DIV D | 151.4675 | (T17) 67.0 | 151.4675 | (T17) 67.0 | A | |
| 10 | TACTICAL | CDF T36 | DIV E | 159.3225 | (T17) 67.0 | 159.3225 | (T17) 67.0 | A | |
| 11 | TACTICAL | CDF T37 | DIV F | 151.1525 | (T17) 67.0 | 151.1525 | (T17) 67.0 | A | |
| 12 | TACTICAL | VFIRE 25 | UNASSIGNED | 154.2875 | (T6) 156.7 | 154.2875 | (T6) 156.7 | A | |
| 13 | A/G CMD | A/G CMD | ALL DIVS | 166.6000 | 0.0 | 166.6000 | 0.0 | A | Overhead Use Only |
| 14 | A/G TAC | A/G TAC | ALL DIVS | 168.3750 | 0.0 | 168.3750 | 0.0 | A | |
| 15 | TACTICAL | CALCORD | ALL DIVS | 156.0750 | (T6) 156.7 | 156.0750 | (T6) 156.7 | A | Medical Evac Tone 6 |
| 16 | A/G | AIRGUARD | ALL DIVS | 168.6250 | 0.0 | 168.6250 | (T1) 110.9 | A | Emergency Use Only |
| 17 | | | | | | | | | |
| 18 | | | | | | | | | |
| 19 | | | | | | | | | |
| 20 | A/G | AIRGUARD | ALL DIVS | 168.6250 | 0.0 | 168.6250 | (T1) 110.9 | A | |

5. Special Instructions
 24 Hour Communications Phone 510-507-1514


6. Prepared by (Communications Unit Leader): Name: C.Perry
 Signature: 
 Date/Time: 07/17/24
 NIMS IAP 1930

ICS 205 - INCIDENT RADIO COMMUNICATIONS PLAN

| | | |
|--|--|---|
| 1. Incident Name: Shelly Fire SH717 Z2 Page 2 | 2. Date/Time Prepared Date: 07/17/2024 Time: 1930 | 3. Operational Period: Date From: 07/18/24 Time From: 0700 Date To: 07/19/24 Time To: 0700 |
|--|--|---|

| 4. Communications | | | | | | | | | |
|-------------------|----------|----------|-------------|----------|------------|----------|------------|------|---------------------|
| Ch# | Function | Name | Assigned To | Rx Freq | Rx Tone | Tx Freq | Tx Tone | Mode | Notes |
| 1 | COMMAND | NIFC C3 | ALL DIVS | 170.4250 | (T3) 131.8 | 168.0750 | (T3) 131.8 | A | English Peak |
| 2 | COMMAND | NIFC C10 | ALL DIVS | 170.4125 | (T3) 131.8 | 165.9625 | (T3) 131.8 | A | Quartz Lookout |
| 3 | COMMAND | NIFC C11 | ALL DIVS | 170.6875 | (T3) 131.8 | 166.5750 | (T3) 131.8 | A | Whisky Butte |
| 4 | COMMAND | NIFC C12 | ALL DIVS | 173.0375 | (T3) 131.8 | 167.3250 | (T3) 131.8 | A | Helispot 5 |
| 5 | COMMAND | NIFC C20 | ALL DIVS | 172.5500 | (T3) 131.8 | 162.1875 | (T3) 131.8 | A | Boulder Peak |
| 6 | TACTICAL | NIFC T1 | DIV G | 168.0500 | (T3) 131.8 | 168.0500 | (T3) 131.8 | A | |
| 7 | TACTICAL | NIFC T2 | DIV M | 168.2000 | (T3) 131.8 | 168.2000 | (T3) 131.8 | A | |
| 8 | TACTICAL | NIFC T3 | DIV T | 168.6000 | (T3) 131.8 | 168.6000 | (T3) 131.8 | A | |
| 9 | TACTICAL | NIFC T4 | NORTH | 166.7250 | (T3) 131.8 | 166.7250 | (T3) 131.8 | A | North Contingency |
| 10 | TACTICAL | NIFC T5 | SOUTH | 166.7750 | (T3) 131.8 | 166.7750 | (T3) 131.8 | A | South Contingency |
| 11 | TACTICAL | NIFC T6 | FSR NORTH | 168.2500 | (T3) 131.8 | 168.2500 | (T3) 131.8 | A | |
| 12 | TACTICAL | VTAC 12 | FSR SOUTH | 154.4525 | (T6) 156.7 | 154.4525 | (T6) 156.7 | A | |
| 13 | A/G CMD | A/G CMD | ALL DIVS | 166.6000 | 0.0 | 166.6000 | 0.0 | A | Overhead Use Only |
| 14 | A/G TAC | A/G TAC | ALL DIVS | 168.3750 | 0.0 | 168.3750 | 0.0 | A | |
| 15 | TACTICAL | CALCORD | ALL DIVS | 156.0750 | (T6) 156.7 | 156.0750 | (T6) 156.7 | A | Medical Evac Tone 6 |
| 16 | A/G | AIRGUARD | EMERGENCY | 168.6250 | 0.0 | 168.6250 | (T1) 110.9 | A | Emergency Use Only |
| 17 | | | | | | | | | |
| 18 | | | | | | | | | |
| 19 | | | | | | | | | |
| 20 | A/G | AIRGUARD | Emergency | 168.6250 | 0.0 | 168.6250 | (T1) 110.9 | A | Emergency Use Only |

5. Special Instructions
 24 Hour Communications Phone 510-507-1514

| | |
|---|---|
| 6. Prepared by (Communications Unit Leader): Name: C.Perry | Signature:  Date/Time: 07/17/24 |
| NIMS IAP 1930 | |

ICS 205 - INCIDENT RADIO COMMUNICATIONS PLAN

| | | | | | | | |
|---|--|--|--|---|--|------------------------------------|--|
| 1. Incident Name: SHELLY IA Page 3 | | 2. Date/Time Prepared Date: 07/17/2024 Time: 1930 | | 3. Operational Period: Date From: 07/18/24 Time From: 0700 | | Date To: 07/19/24 Time To: 0700 | |
|---|--|--|--|---|--|------------------------------------|--|

| 4. Communications | | | | | | | | | |
|-------------------|----------|------------|-------------|----------|-------------|----------|---------|------|------------------------------|
| Ch# | Function | Name | Assigned To | Rx Freq | Rx Tone | Tx Freq | Tx Tone | Mode | Notes |
| 1 | DISPATCH | FS KNF | DISPATCH | 171.5250 | 0.0 | 165.4125 | OST | A | Dispatch |
| 2 | COMMAND | KNF Salmon | IA COMMAND | 172.4000 | | 164.1250 | OST | A | |
| 3 | COMMAND | KNF River | IA COMMAND | 172.2500 | | 165.0750 | OST | A | |
| 4 | TACTICAL | R5 T4 | IA TAC | 166.5500 | 0.0 | 166.5500 | OST | A | |
| 5 | A/G | AG-43 | IA A/G | 167.6000 | 0.0 | 167.6000 | OST | A | |
| 6 | DISPATCH | SKU L | DISPATCH | 151.3250 | (T6) 156.7 | 159.3600 | OST | A | |
| 7 | TACTICAL | CDF T9 | IA TAC | 151.3850 | (T16) 192.8 | 151.3850 | OST | A | Tone 16 (192.8) |
| 8 | TACTICAL | CDF T10 | IA TAC | 151.4000 | (T16) 192.8 | 151.4000 | OST | A | Tone 16 (192.8) |
| 9 | A/G | CDF A/G1 | IA A/G | 151.2200 | (T16) 192.8 | 151.2200 | OST | A | Tone 16 (192.8) |
| 10 | | | | | | | | | |
| 11 | | | | | | | | | |
| 12 | | | | | | | | | |
| 13 | | | | | | | | | |
| 14 | A/G TAC | A/G TAC | ALL DIVS | 168.3750 | 0.0 | 168.3750 | OST | A | |
| 15 | TACTICAL | CALCORD | ALL DIVS | 156.0750 | (T6) 156.7 | 156.0750 | OST | A | Medical Evac Tone 6 (156.7) |
| 16 | A/G | AIRGUARD | EMERGENCY | 168.6250 | 0.0 | 168.6250 | OST | A | Emergency Use Tone 1 (110.9) |
| 17 | | | | | | | | | |
| 18 | | | | | | | | | |
| 19 | | | | | | | | | |
| 20 | A/G | AIRGUARD | EMERGENCY | 168.6250 | 0.0 | 168.6250 | OST | A | Emergency Use Tone 1 (110.9) |

5. Special Instructions
24 Hour Communications Phone 510-507-1514

| | | | |
|--|--|--|--|
| 6. Prepared by (Communications Unit Leader): Name: C. Perry | | Signature:  | |
| ICS 205 - CONTROLLED UNCLASSIFIED INFORMATION/BASIC | | Date/Time: 07/17/24 1930 | |

| AIR OPERATIONS SUMMARY ICS-220 | | | | | | | | | | | | | |
|--|-----------|-------------|----------|---------|---------|-----------------------------|------------------|---------------|--------------------|---------|-------|-------|---------------|
| Incident Name / Number | | Sunrise | Sunset | Airport | Pumpkin | Time Prepared | | Date Prepared | | | | | |
| SHELLY | | 0554 | 2041 | A30 | 2030 | 1700 | Shutdown | 7/17/2024 | 7/18/2024 | | | | |
| <p>General Remarks, Safety Notes, Hazards, Air Operations Special Equipment, etc.</p> <p>*All Aircraft orders go to Scott Valley Helibase</p> <p>*Be aware of retardant avoidance areas, 300ft away from waterways and bodies of water.</p> <p>*Sanitize Buckets before changing water sources.</p> <p>*Clear drop area/line before initiating drop sequence.</p> <p>*Be cognizant of all overhead and environmental hazards while working with Aircraft.</p> <p>*All GPS is to be collected in DD° MM.MMM'</p> <p>*ALL water and retardant picks/drops need to be tracked and recorded</p> <p>*Aviation daily cost to: Scottvalleyhb2023@gmail.com</p> <p>*Siskiyou County Airport temporary FFA tower in place for all air traffic control.</p> | | | | | | | | | | | | | |
| Incident Frequencies | RX | Tone | TX | Tone | AM/FM | Position | Name | Phone | EQUIPMENT/SUPPLIES | | | | |
| TFR Victor | 120.5250 | | 120.5250 | | AM | | | | | | | | |
| Rotor Victor | 132.5750 | | 132.5750 | | AM | A0BD | Kyle Beinschroth | 760-617-9493 | | | | | |
| Briefing Victor | 125.1250 | | 125.1250 | | AM | ASGS | | | | | | | |
| AirTactics | 164.7750 | | 164.7750 | | FM | ASGS-T | Dakota Fulks | 530-736-2863 | | | | | |
| A/G CMD | 166.6000 | | 166.6000 | | FM | HEBM-SVHB | Lee Stewart | 775-220-6364 | | | | | |
| A/G TAC | 168.3750 | | 168.3750 | | FM | HEBM-SIY | Joe Carstensen | 530-520-6479 | | | | | |
| TOLC | 169.2000 | | 169.2000 | | FM | HLCO | Matt Lynde | 530-919-8673 | Scott Valley | | | | |
| DECK | 163.1000 | | 163.1000 | | FM | HLCO | Alex Lujan | 530-925-0934 | SIY | | | | |
| AIR GUARD | 168.6250 | | 168.6250 | 110.9 | FM | ATGS | Isaac Flattley | 530-864-0202 | SIY Tanker Base | | | | |
| CALCORD | 156.0750 | 156.7 | 156.0750 | 156.7 | FM | ATBM | Matt Libby | 530-643-9887 | | | | | |
| Siskiyou Tower | 128.7750 | | 128.7750 | | FM | UR-31 | Peter York | 916-956-5420 | UAS | | | | |
| | | | | | | UAO | Tyler Detrick | 530-925-9668 | | | | | |
| HELICOPTERS - Scott Valley Helibase | | | | | | | | | | | | | |
| FAA # | TYPE | Make/Model | Helibase | Start | Avail | Remarks | FAA # | TYPE | Make/Model | Airport | Start | Avail | Remarks |
| 503 | 3 | AS350B3E | SVHB | 0800 | 0830 | Recon, Bux, PSD, IA | N181EH | 3 | AS350B3E | SIY | 0800 | 0830 | Recon |
| 502 | 3 | AS350B3E | SVHB | 0800 | 0830 | Recon, Bux, PSD, IA | N5517N | 2 | UH-1H | SIY | 0800 | 0830 | Bucket |
| 532 | 2 | Bell 205A++ | SVHB | 0800 | 0830 | Bux, Troop transport, Recon | N45917 | 1 | S-61 | SIY | 0800 | 0830 | Tanked |
| N675TH | 1 | Kmax | SVHB | 0800 | 0830 | Bux, Cargo | N80BH | 1 | UH-60 | SIY | 0800 | 0830 | Bucket |
| N39HX | 1 | Kmax | SVHB | 0800 | 0830 | Bux, Cargo | N517MB | 1 | UH-60 | SIY | 0800 | 0830 | Bucket |
| N40HX | 1 | Kmax | SVHB | 0800 | 0830 | Bux, Cargo | N6962R | 1 | S-64 | SIY | 0800 | 0830 | Tanked |
| | | | | | | | N948CH | 1 | CH-47 | SIY | 0800 | 0830 | Tanked |
| | | | | | | | G841 | 1 | UH-60 | 106 | | | 24 hour hoist |
| FIXED WING AA/HLCO | | | | | | | | | | | | | |
| FAA # | Call Sign | Make/Model | Base | Start | Avail | Remarks | FAA # | TYPE | Make/Model | Airport | Start | Stop | Remarks |
| N32WS | AA05 | AC690 | SIY | 0800 | 0830 | | | | | | | | |
| N484AS | 4AS | Bell 407HP | SIY | 0800 | 0830 | HLCO | | | | | | | |

HELICOPTER EXTRACTION OPERATIONS

The intent of helicopter insertion/extraction operations is to facilitate the movement of personnel to and from inaccessible areas. These operations are not meant to be a medical transport resource; life flight and ground transportation should always be ordered in addition to the extraction aircraft and crew.

ORDERING:

- On-scene EMT and/or Incident within Incident IC determines that an extraction helicopter is needed and places the order through the pre-established procedures:
 - Division Supervisor
 - Incident Communications
 - Dispatch Center
- When ordering extraction aircraft provide the following information:
 - Location (Lat/Long) of patient
 - Known Hazards
 - Wind Speed and Direction
 - Terrain
 - Incident Updates

SITE SELECTION:

- The helicopter crew will confirm the extraction location when they arrive on scene. However, a general rule is any clearing that is 10'x10' with visible sight lines to the sky is a suitable extraction site.
- If the terrain is steep, excavating a platform or shelf can make it easier for patient packaging.

QR Code-Short-haul Site Selection Video



CONSIDERATIONS:

- Short-haul and hoist are safe and efficient operations for extracting injured personnel of any severity including "Green" patients.
- Ensure area is clear of non-essential items, hazards, and personnel.
- Rotor wash may affect overhead hazards and blowing dust/debris can create brown out conditions or influence fire behavior.
- Aerial Supervision is valuable for coordinating aviation medevac/extraction missions and should be ordered if available and not currently present.
- The aircrew will make the final assessment of the mission. Always have a contingency plan in case a helicopter cannot complete the request.

DEFINITIONS:

Rescue Hoist: A cable winching device mounted to the helicopter that can lower/raise persons attached to a cable.

- Common cable lengths are 250-300 feet.

Short-haul: To insert or extract one or more persons suspended on a fixed line beneath a helicopter.

- Common short-haul line lengths are 100, 150, and 250 feet. The lines can also be connected for a longer line if the situation requires it.

FINANCE MESSAGE

| |
|--|
| Fire Name: Shelly Fire |
| Fire Number: CA-KNF-005159 |
| Accounting Code: P5 R18J (0505) |
| Email: 2024.shelly.finance@firenet.gov |
| Incident Phone: 530-536-0781 |

Finance Documents Needed upon "Check In" (If Not Already Submitted):

| Please email these documents or scan the QR Code below, attach & submit. | | | |
|--|--|--|---|
| FED Equipment/ Crews: <ul style="list-style-type: none">• Manifest - showing employment type (GS or WG) or AD rates if applicable | Overhead: <ul style="list-style-type: none">• AD/Casual Hire Form• If regular Agency please ensure "GS" or "WG" is written on your CTR | Contract Equipment/ Contract Crews: <ul style="list-style-type: none">• Agreement• Manifest• Resource Order• Inspections | Cooperator: <ul style="list-style-type: none">• Cooperative Agreement• Resource Order |

When emailing finance:

- Overhead/FED: *subject line:* TIME, Resource #, Resource Name
- Equipment/Cooperator: *subject line:* EQTR, Resource #, Resource Name

Prior to your demob date, please contact Finance *via email* to expedite the demob process.
Upon submittal of your final CTR/Shift Tickets, Finance will email you copies of your pay documents for review and signature.

Local Government Resources & CalOES on CFAA also check-in here:



Rick Young CalOES AREP
916-541-3165



FINANCE MESSAGE



TIME Process

Shift Tickets: Line supervisors complete for Hired Equipment and submit hard copy to TIME, OR complete an e-Shift Ticket online at <https://shifftickets.fire.ca.gov> AND provide a hard copy to TIME. Shift Ticket example on next page of IAP.

Personnel Time: All Cal Fire personnel check in to TIME trailer located at fairgrounds in Yreka.

Hired Equipment: All Hired Equipment resources check in to TIME trailer located at fairgrounds in Yreka with a copy of your agreement.

Local Government: Check-in with OES Rep, located at the fairgrounds in Yreka.

COMP/CLAIMS

Report all comp claims to Comp Claims Trailer located at Yreka Fairgrounds.

- Josh Chastain: (530) 922-0131

AO-341 Hotel Rosters

Please sign the roster for every night.

Feeding

Feeding is provided at the Yreka fairgrounds.

Off-Site feeding: Will be updated and posted DAILY at Motels Unit.



CAL FIRE SISKIYOU UNIT



Finance Section – Shift Ticket Examples

24HR LINE RESOURCE - 2 OPERATORS

| | | | | | | | | | | |
|---|--|--|---|--|--|--|--|--------------|--|--|
| EMERGENCY SHIFT TICKET and EVALUATION FORM <small>The responsible Government Officer will complete this form each shift.</small> | | | | | Contractor Name DIRT PUSHERS LLC | | | | | |
| Incident or Project Name SHELLY | | | Incident Number CAKNF005159 | | Request Number E-20007 | | Operator #1 (DAY SHIFT) FIRST & LAST | | Operator #2 (NIGHT SHIFT) FIRST & LAST | |
| Agreement Number SHU 0012345678 | | | | | Operator Furnished By: <input checked="" type="checkbox"/> Contractor <input type="checkbox"/> Government | | | | | |
| Equipment Make 2002 CATERPILLAR | | | Equipment Model / Type D6N XL, TYPE 2 - E | | Operating Supplies Furnished By: <input checked="" type="checkbox"/> Contractor <input type="checkbox"/> Government | | | | | |
| Serial Number COMPLETE SERIAL # | | | License Number | | Equipment Status <input checked="" type="checkbox"/> Inspected <input checked="" type="checkbox"/> Under Agreement | | | | | |
| Equipment Use | | | | | Released by Government <input type="checkbox"/> | | | | | |
| Date Mo / Day Start Stop Work | | | | | (Circle) Hours Days / Miles Assignment | | | | | |
| 6/18 0701 2400 | | | 17 | | DIV X | | | | | |
| 6/19 0001 0700 | | | 7 | | DIV X | | | | | |
| Vendor Rating | | | | | Govt. Rep. Name and Position – PRINT | | | | | |
| | | | | | Print Your Name | | | | | |
| Met Performance Expectations | | | | | Govt. Rep. Signature | | | | | |
| Equipment in Safe Working Condition | | | | | <i>Your Signature</i> | | | | | |
| Operator Skill Level | | | | | Contractor Signature | | | | | |
| Operates Safely | | | | | <i>Contractor Signature</i> | | | | | |
| Operator's Cooperation Level | | | | | Date | | Time | | | |
| Overall Performance | | | | | 7/9/2024 | | 0700 | | | |
| <small>* NOTE: any rating of POOR requires an explanation in Comment Section.</small> | | | | | | | | CAL FIRE 297 | | |
| <small>** Final evaluation or for more documentation, use a CALFIRE Form 230 or equivalent.</small> | | | | | | | | (Rev 3-2011) | | |

12HR LINE RESOURCE - 1 OPERATOR

| | | | | | | | | | | |
|---|--|--|---|--|--|--|--|--------------|-------------|--|
| EMERGENCY SHIFT TICKET and EVALUATION FORM <small>The responsible Government Officer will complete this form each shift.</small> | | | | | Contractor Name TRANSPORTS EXPRESS | | | | | |
| Incident or Project Name SHELLY | | | Incident Number CAKNF005159 | | Request Number E-20008 | | Operator #1 (DAY SHIFT) FIRST & LAST | | Operator #2 | |
| Agreement Number SHU 0012345678 | | | | | Operator Furnished By: <input checked="" type="checkbox"/> Contractor <input type="checkbox"/> Government | | | | | |
| Equipment Make 1999 PETERBILT 379 | | | Equipment Model / Type TRANSPORT 18 WHEEL | | Operating Supplies Furnished By: <input checked="" type="checkbox"/> Contractor <input type="checkbox"/> Government | | | | | |
| Serial Number LAST 8 OR FULL VIN | | | License Number 12345A1 | | Equipment Status <input checked="" type="checkbox"/> Inspected <input checked="" type="checkbox"/> Under Agreement | | | | | |
| Equipment Use | | | | | Released by Government <input type="checkbox"/> | | | | | |
| Date Mo / Day Start Stop Work | | | | | (Circle) Hours Days / Miles Assignment | | | | | |
| 4/1 0701 1900 | | | 12 | | DIV X | | | | | |
| Vendor Rating | | | | | Govt. Rep. Name and Position – PRINT | | | | | |
| | | | | | Print Your Name | | | | | |
| Met Performance Expectations | | | | | Govt. Rep. Signature | | | | | |
| Equipment in Safe Working Condition | | | | | <i>Your Signature</i> | | | | | |
| Operator Skill Level | | | | | Contractor Signature | | | | | |
| Operates Safely | | | | | <i>Contractor Signature</i> | | | | | |
| Operator's Cooperation Level | | | | | Date | | Time | | | |
| Overall Performance | | | | | 7/9/2024 | | 1900 | | | |
| <small>* NOTE: any rating of POOR requires an explanation in Comment Section.</small> | | | | | | | | CAL FIRE 297 | | |
| <small>** Final evaluation or for more documentation, use a CALFIRE Form 230 or equivalent.</small> | | | | | | | | (Rev 3-2011) | | |



If you would like to be part of our Cooperators Team, use this QR code to have your name on our mailing list and Cooperators Contact Sheet. You can get our meeting updates, agendas and IAP's.



Logistics Hours

Caterer Hours: Breakfast: 0530 - 0900
Dinner: 1800 - 2130

Shower: 0500-1200, 1400 – 2300

Supply: 0630-2130

Laundry: 0500-2200

Fuel Tender 0600-1300, 1500-2200

Training Message

John Fakehany

TNSP

909-693-9748



Jecobie Waters

TNSP(t)

530-414-3470

If you are located at the Etna ICP use the QR code to register with Training

Yreka ICP

If you have a 20000 resource identifier register with the TEAM 6 TNSP

Shane Vargas, TNSP

Shane.vargas@fire.ca.gov

HUMAN RESOURCE MESSAGE

YOU must be FIT FOR DUTY and YOU are responsible for your conduct and behavior.

"To every person there comes a time in life, that special moment, when they are figuratively tapped on the shoulder and offered the chance to do a very special thing, unique to them and fitted to his or her talent. What a tragedy if that moment finds them unprepared or unqualified for the work which would be their finest hour."

-Winston Churchill

Janine Summy, Human Resource Specialist, 509-429-1206

NFFE Union Steward for the USFS is Randy Meyer, 530-503-5964

Randy.meyer@usda.gov. Available 24 hours daily

SHELLY FIRE DEMOB LIST

WEDNESDAY, JULY 18TH 2024

| REQUEST NUMBER | IDENTIFIER | TIME |
|------------------|----------------|------|
| EQUIPMENT | | |
| E-4 | WTS2 TOBIASSON | 0700 |
| E-258 | STC 4807C | 0715 |
| E-255 | STC 2861F | 0730 |
| E-20181 | STA 6840A | 0745 |
| E-20015 | STC 9122C | 0800 |
| CREWS | | |
| C-14 | HC1 HIGH ROCK | 0700 |
| C-1 | HC2IA MODOC | 0730 |
| C-10 | STG 9274G | 0800 |
| C-20004 | STG 9245G | 0845 |
| OVERHEAD | | |
| O-52 | EMTF CARROLL | 0715 |
| O-43 | CULS SANCHEZ | 0730 |
| O-20022 | DIVS CLEMENT | 0745 |
| O-20024 | DIVS CHOLICO | 0800 |

NOTE: You can come to DEMOB to pick up your 221 Checkout Sheet at 0700 or later. The time listed is when Finance expects you to close out your time.

TRANSPORTATION

SHELLY
07/18/24



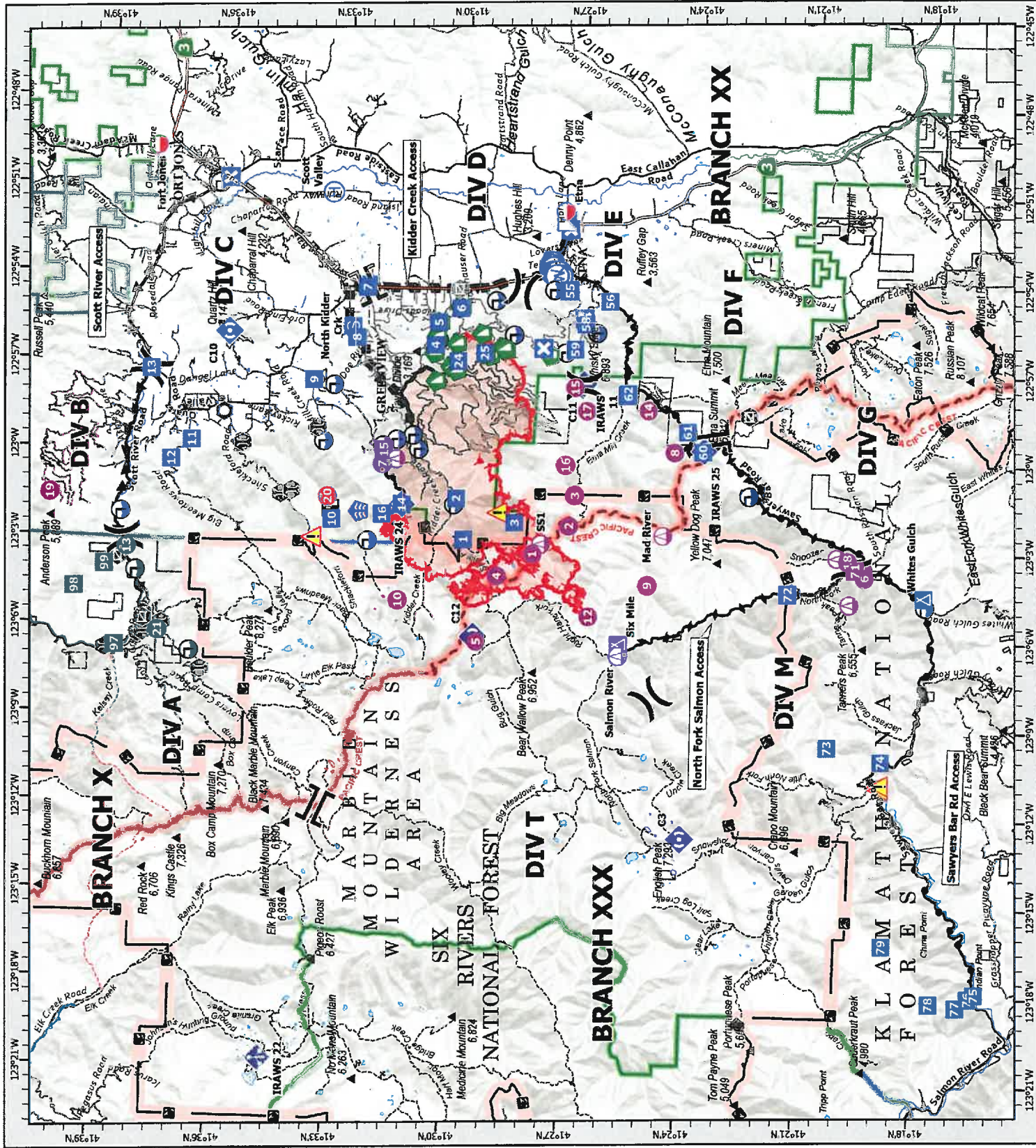
- Mobile Retardant Base
- Helispot
- Sling Site
- Division Break
- Branch Break
- Incident Command Post
- Drop Point
- Closure
- Camp
- Staging Area
- Lookout
- Landmark
- Gate
- Stream Crossing
- Road Repair
- Dozer Push
- Mobile Weather Unit
- Repeater
- Safety Zone
- Hazard
- Draft Site
- Hydrant
- Restricted Water Source
- Contained
- Uncontained
- Wildfire Daily Fire Perimeter
- Secondary Highway
- Major Road
- Minor Road
- National Trail
- Trail
- National Designated Trail
- Water Trail
- USFS Wilderness
- USFS Administrative Forest
- Non Forest

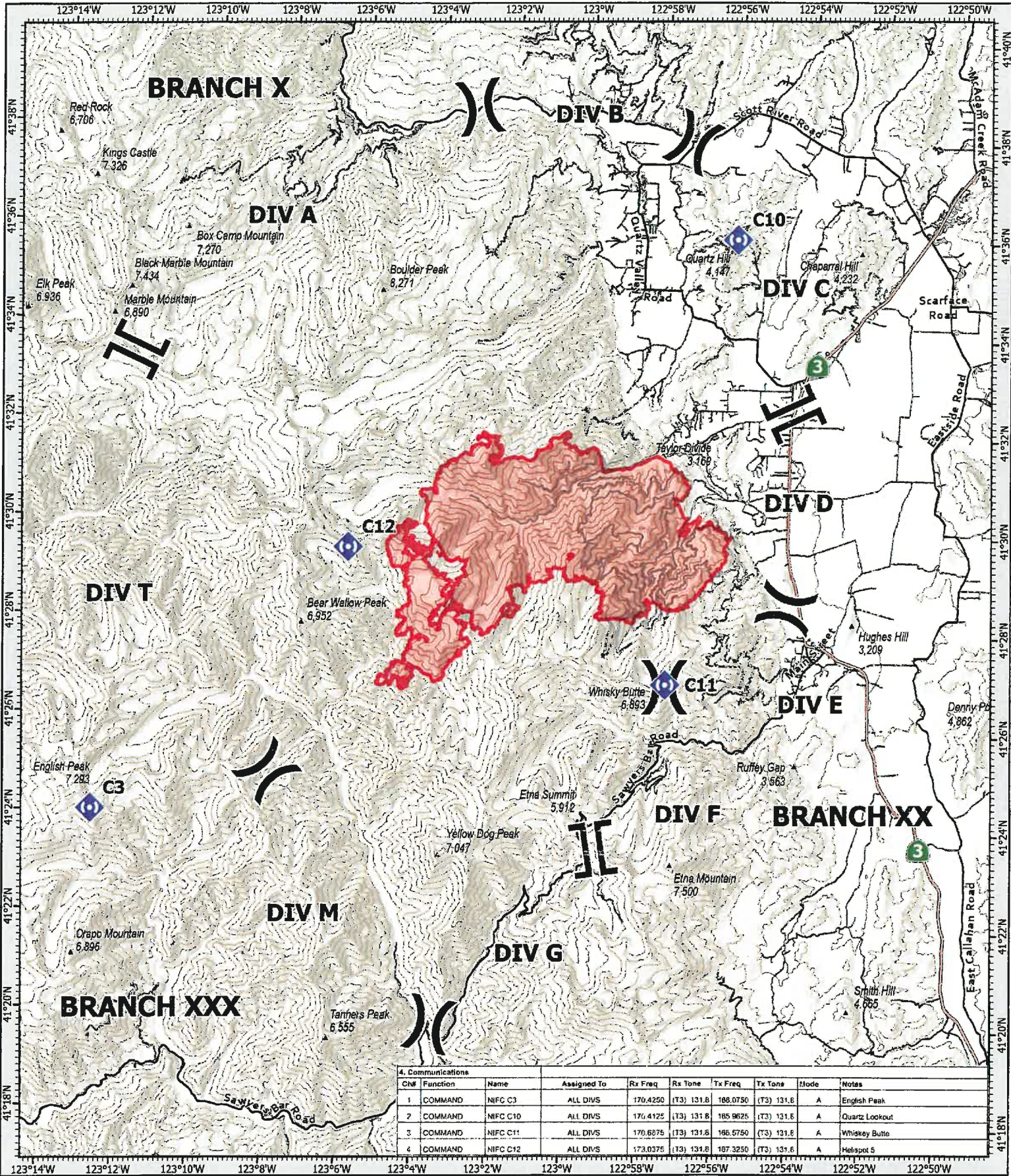
TRANSPORTATION ROUTES

- Kidder Creek Access
- North Fork Salmon Access
- Sawyers Bar Rd Access
- Scott River Access



0 1 2 4 Miles
1:240,000 NAD83 UTM 11N





4. Communications

| Ch# | Function | Name | Assigned To | Rx Freq | Rx Tone | Tx Freq | Tx Tone | Mode | Notes |
|-----|----------|----------|-------------|----------|------------|----------|------------|------|----------------|
| 1 | COMMAND | NIFC C3 | ALL DIVS | 170.4250 | (13) 131.6 | 168.0750 | (13) 131.6 | A | English Peak |
| 2 | COMMAND | NIFC C10 | ALL DIVS | 170.4125 | (13) 131.6 | 165.9625 | (13) 131.6 | A | Quartz Lookout |
| 3 | COMMAND | NIFC C11 | ALL DIVS | 170.6875 | (13) 131.6 | 166.5750 | (13) 131.6 | A | Whiskey Butte |
| 4 | COMMAND | NIFC C12 | ALL DIVS | 173.0375 | (13) 131.6 | 167.3250 | (13) 131.6 | A | Helispot 5 |

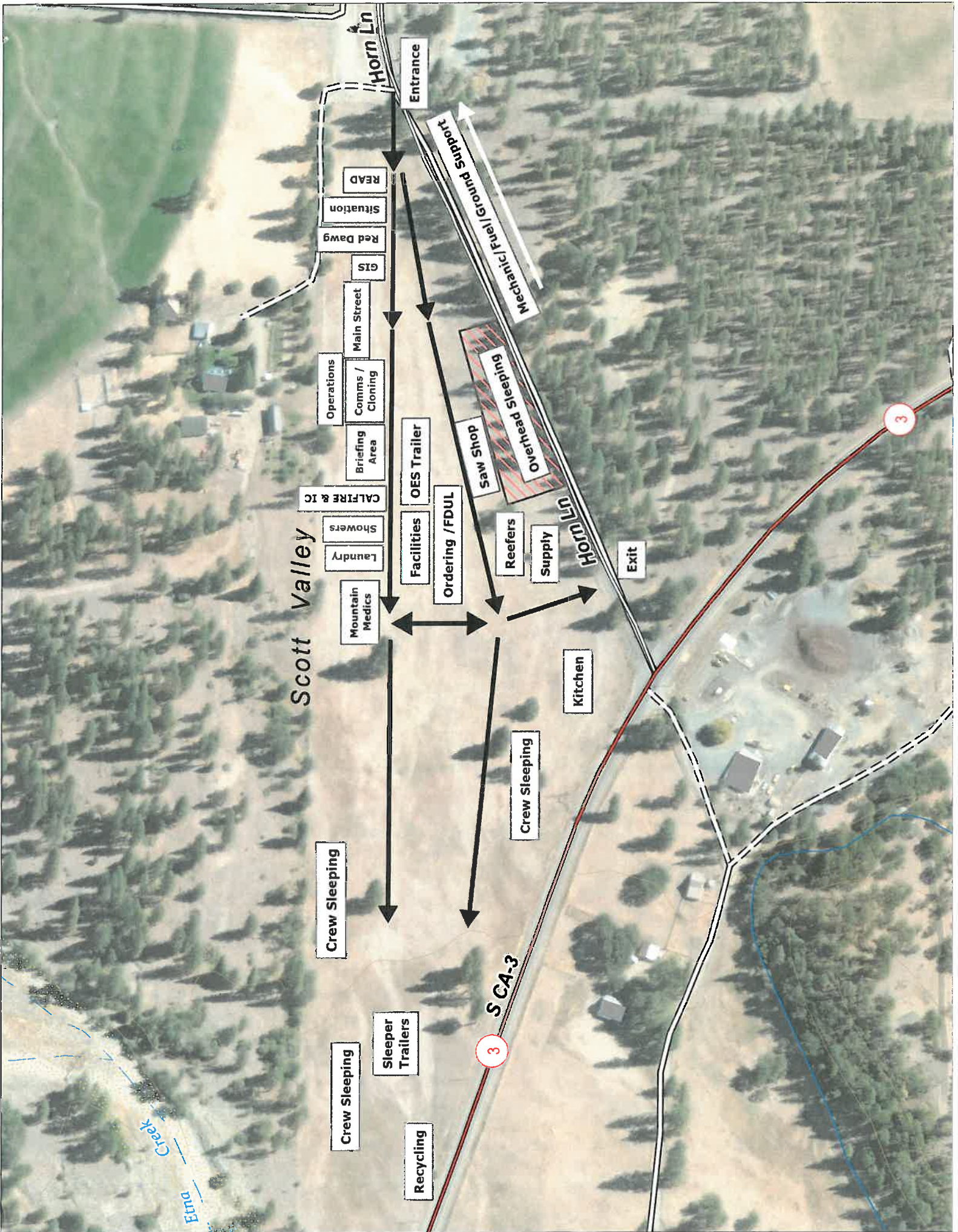


- () Division Break
- [] Branch Break
- ◊ Repeater
- ▲ Gap; Summit
- ▭ Wildfire Daily Fire Perimeter

COMMUNICATIONS
SHELLY
 CA-KNF-005159
 07/18/24



1:100,000 NAD83 CA ALBERS
 0 1 2 4 Miles
 Prepared by: CRIM12 7/17/2024 15:45



Scott Valley

Horn Ln

Entrance

Mechanic/Fuel/Grind Support

READ

Situation

Red Dawg

GIS

Main Street

Operations

Comms / Cloning

Briefing Area

CALFIRE & IC

Showers

Laundry

Mountain Medics

OES Trailer

Ordering / FDUL

Saw Shop

Overhead Sleeping

Reefers

Supply

Exit

Kitchen

Crew Sleeping

Crew Sleeping

Crew Sleeping

Sleeping Trailers

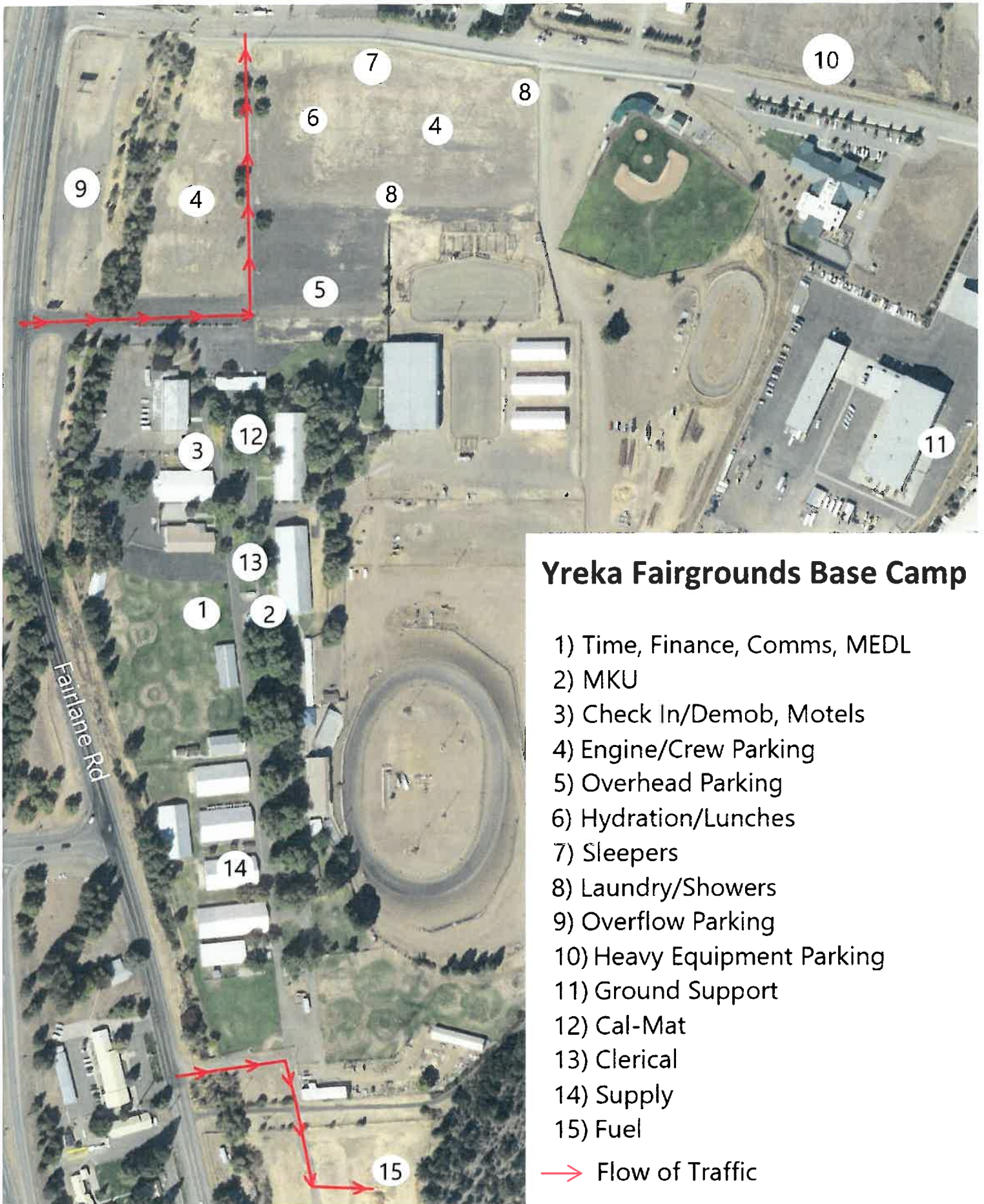
Recycling

S CA-3

Erna Creek

3

3



Yreka Fairgrounds Base Camp

- 1) Time, Finance, Comms, MEDL
- 2) MKU
- 3) Check In/Demob, Motels
- 4) Engine/Crew Parking
- 5) Overhead Parking
- 6) Hydration/Lunches
- 7) Sleepers
- 8) Laundry/Shower
- 9) Overflow Parking
- 10) Heavy Equipment Parking
- 11) Ground Support
- 12) Cal-Mat
- 13) Clerical
- 14) Supply
- 15) Fuel

→ Flow of Traffic

Shelly Incident CA-KNF-005159
 1712 Fairlane Rd, Yreka CA 96097

CIIMT 12 Line Order Worksheet



| Date, Time, and From Who Order Was Placed: | Order Number: | Delivery Location and Time (Div, LZ, DP, Lat/Long, etc) | Delivery Mode (Delivery, Pickup, Helo, etc.): |
|--|--|---|---|
| Order received in Communications by: Delivery by who & time and/or date scheduled. Detailed instructions and notes if needed: | | | |
| Item # Description <i>Note: Items match reference cards carried by Team 12 operations personnel</i> Quantity Ordered | | | |
| 1 | Mark III Pump Kit: Contains frame and Alice Pack with Straps, 1ea 10' x 1.5" Hard Suction, Instructions, Tool Roll Kit, 1ea 35GPM Nozzle, 1ea 60GPM Nozzle, 1ea Twin Tip Nozzle 1", 1qt two cycle oil, Packsack-waterproof w/straps, Collapsible Bucket, Hand Primer, 1ea 10' x 20' Plastic Sheeting, 1ea 5 Gallon Fuel Can with Adapters, 1ea 1.5" Check and Bleeder Valve, 1ea 1.5" Foot Valve, 1ea 1.5" Pressure Relief Valve, 1ea 1.5" Gated Wye, 1ea 1.5" Gated Wye, 1ea Spanner Wrench, P-Cord | | |
| 2 | UNI-Engine (Klump Pump) Dimensions: 7' wide x 10' Long, 1000 Gallon Capacity, 13 HP, 90 GPM, @ 110 psi, Unleaded Fuel, 24' of 2" Hard Suction, 1000' of 1.5", 800' of 1", 400' ¾" Hose, Self-leveling System with Manual Jacks, 1600 lbs. Fully Equipped w/Type-2 Helo Cables, 5 Gallons of Foam with proportioner | | |
| 3 | Norton Hose Kit 1 ½" Hose - 5000 Feet, 1" Hose - 2000 Feet, ¾" Hose - 2000 Feet, 1 ½" Gated Wye's - 25ea, 1 ½" to 1" Reducers - 25 ea, 1" to ¾" Reducers 25 ea, 1" Combination Nozzles - 25 ea, ¾" Nozzles - 25 ea, Hose Clamps - 3 ea, Class A Foam - 25 Gallons, 1 ½" Combo Nozzles - 5 ea, ¾" Wye's - 25 ea | | |
| 4 | Half-Norton Hose Kit 1 ½" Hose, 2500 Feet, 1" Hose, 1000 Feet, ¾" Hose, 1000 Feet, 1 ½" Gated Wye's, 12ea, 1 ½" to 1" Reducers, 12ea, 1" to ¾" Reducers, 12ea 1" Combo Nozzles, 12 ea, ¾" Nozzles, 12ea, Hose Clamps - 3 ea, Class A Foam - 10 Gallons, 1 ½" Combo Nozzles - 2 ea, ¾" Wye's - 12 ea | | |
| 5 | Coyote Package (For a 20 Person Crew - Approx 785lbs) 50 gal Water - 12 cases, 25 gal Gatorade - 6 cases, 3 Cases of MRE's, 40ea Sack Lunches, 1 case - AA Batteries, 5 Rolls Toilet Paper, 20 Gl Gasoline, 4 Gl Bar and Chain Oil, ¼ Box Trash Bags, 25ea Bath-In-A-Bags, 25ea Towel, Cleansing 12" x 30", 2 to 4ea Gold Band, 40oz. 2-Cycle Mlbx. | | |
| 6 | 1000 foot hose lay kit includes the following: 10ea 100' x 1 1/2" Hose, 10ea 100' x 1" Hose, 10ea 1 1/2" Gated Wyes, 10ea 1 1/2" to 1" Reducers, 10ea 1" Nozzles | | |
| 7 | 2000 foot hose lay kit includes the following: 20ea 100' x 1 1/2" Hose, 20ea 100' x 1" Hose, 20ea 1 1/2" Gated Wyes, 20ea 1 1/2" to 1" Reducers, 20ea 1" Nozzles | | |
| 8 | 3000 foot hose lay kit includes the following: 30ea 100' x 1 1/2" Hose, 30ea 100' x 1" Hose, 30ea 1 1/2" Gated Wyes, 30ea 1 1/2" to 1" Reducers, 30ea 1" Nozzles | | |

| Item # | Description | NFES # | Quantity Requested | Item # | Description | NFES # | Quantity Requested |
|--------|-------------------------------|--------|--------------------|--------|---|--------|--------------------|
| 9 | Hose (50') Garden, 3/4" | 1016 | | 34 | Gas Unleaded (Gallons) | | |
| 10 | Hose (100'), 1" | 0966 | | 35 | Oil 2 Cycle (Pints) | 0344 | |
| 11 | Hose (100'), 1 1/2" | 0967 | | 36 | Bar oil (Qts) | 1869 | |
| 12 | Nozzle, Garden, 3/4" | 0136 | | 37 | Drip torch - ea | 0241 | |
| 13 | Nozzle, Forester, 1" | 0024 | | 38 | Drip torch mix 3.5 : 1.5 (gallon) | | |
| 14 | Nozzle, KK Type, 1" | 1081 | | 39 | Fusees BX | 0105 | |
| 15 | Nozzle, KK Type, 1 1/2" | 1082 | | 40 | Flare Gun Rounds (12/BX) | 0687 | |
| 16 | Wye, Gated, 3/4" | 0739 | | 41 | Cartridge #6 purple (box) | 0372 | |
| 17 | Wye, Gated, 1" | 0839 | | 42 | Batteries "AA" Pkg, (24/PKG)/BX | 0030 | |
| 18 | Wye, Gated, 1 1/2" | 0883 | | 43 | Ribbon, Flagging (Specify Color) | | |
| 19 | Inline Tee, 1" x 1" x 3/4" | 1809 | | 44 | Water, Cubbies | | |
| 20 | Inline Tee 1" x 1" x 1" | 2240 | | 45 | Water, Bottled, Cases | | |
| 21 | Inline Tee 1 1/2" X 1" | 0731 | | 46 | Gatorade | | |
| 22 | Reducer 1" X 3/4" | 0733 | | 47 | MRE's (12/BX) | 1842 | |
| 23 | Reducer 1 1/2" to 1" | 0009 | | 48 | Heavy Mill Plastic | 0283 | |
| 24 | Increaser, 3/4" X 1" | 2235 | | 49 | Washcloth, waterless, Cleansing | 0206 | |
| 25 | Increaser, 1" X 1 1/2" | 0416 | | 50 | Wrap, Structure 54" x 300' | 0881 | |
| 26 | Foam 5 gal | 1145 | | 51 | Sprinkler Kit | | |
| 27 | Foam 4 oz (For Backpack Pump) | 3400 | | 52 | Mark 3 Pump | | |
| 28 | Backpack Pump | 1197 | | 53 | Mark 3 Pump Kit w/10 gal Mix Fuel | | |
| 29 | Pumpkin (Gallons?) | | | 54 | Chainsaw Kit | 0340 | |
| 30 | Porta-Tank (Gallons?) | | | 55 | Mop-Up Kit, 3-wand | 0772 | |
| 31 | Shovel | 170 | | 56 | Pump Kit, Lightweight, 2-Cycle | 0670 | |
| 32 | Combl Tool | 146 | | 57 | Gas, raw and 2 qts 2-Cycle Oil, ea | | |
| 33 | McCloud | 296 | | 58 | Lightweight Pump Kit - Cache w/5 gal fuel | | |
| | | | | 59 | Gas, raw, 1 gallon w/ 1qt 2-cycle oil, ea | | |

Notes:

MEDICAL PLAN (ICS 206 WF) CIIMT 12

| | | | | | | | |
|--|---|-----------------------|--|---------------------------------------|--|-------------------|---|
| 1. Incident Name | | | 2. Operational Period | | | | |
| SHELLY INCIDENT CA-KNF-005159 | | | Date/Time: 07/18/2024 – 07/19/2024 0700-0700 | | | | |
| 3. EMS / Ambulance Services/Aid Stations | | | | | | | |
| Name | Location | Frequency/Phone | | Advanced Life Support (ALS) Yes No | | | |
| MT. SHASTA AMBULANCE | YREKA, CA | Shelly Communications | | X | | | |
| ETNA AMBULANCE | ETNA, CA | Shelly Communications | | X | | | |
| MT. MEDICS Aid Station | ICP | 530-859-2799 | | X | | | |
| 4. Air Rescue / Air Ambulance Services | | | | | | | |
| Name | Phone | | Type of Aircraft & Capability | | | | |
| MERCY AIR | Shelly Communications 530-841-4600 | | AIR AMBULANCE, 24 HR ALS, NO HOIST | | | | |
| PHI | Shelly Communications 530-841-4600 | | AIR AMBULANCE, 24 HR ALS, NO HOIST | | | | |
| REACH AIR | Shelly Communications 530-841-4600 | | AIR AMBULANCE, 24 HR ALS, NO HOIST | | | | |
| CHP | Shelly Communications 530-841-4600 | | 0600-0230, ALS, DAY HOIST ONLY, NO SHORT HAUL | | | | |
| COAST GUARD | Shelly Communications 530-841-4600 | | 24 HR HOIST, BLS ONLY | | | | |
| National Guard (G841) | Shelly Communications 530-841-4600 | | 24 HR HOIST, ALS | | | | |
| 5. Hospitals (all times estimated from incident location) | | | | | | | |
| Name & Level | GPS Datum – WGS 84 Degrees Decimal Minutes | | Travel Time Air Gnd | | Phone | Helipad Yes No | Address |
| UC DAVIS MEDICAL CENTER LEVEL 1 TRAUMA | Lat: | 33°33.292'N | 1.5hr | 6hr | 916-734-3790 ER Desk | X | 2315 Stockton Blvd. Sacramento, CA 95817 |
| | Long: | 121°27.326'W | | | | | |
| MERCY MEDICAL CENTER Redding LEVEL 2 TRAUMA | Lat: | 40°34.325'N | 40m | 3hr | 530-225-7200 ER Desk | X | 2175 Roseline Ave. Redding, CA 96001 |
| | Long: | 122°23.700'W | | | | | |
| ASANTE ROGUE REGIONAL MEDICAL CENTER-LEVEL 2 | Lat: | 42°19.07'N | 20m | 2hr | 541-789-7132 ER Desk | X | 2825 E. Barnette Rd. Medford, OR 97504 |
| | Lat: | 122°49.90'W | | | | | |
| MERCY MEDICAL CENTER Mt. Shasta LEVEL 3 TRAUMA | Lat: | 41°19.111'N | 30m | 2hr | 530-926-9360 ER Desk | X | 914 Pine St. Mt. Shasta. CA 96067 |
| | Long: | 122°19.200'W | | | | | |
| FAIRCHILD MEDICAL CENTER LEVEL 4 TRAUMA | Lat: | 41°43.181'N | 20m | 1.5h | 530-841-6292 ER Desk | X | 444 Bruce St. Yreka, CA 96097 |
| | Long: | 122°38.757'W | | | | | |
| 6. Division / Crew Emergency Pre-Plan | | | | | | | |
| <i>Update and discuss with assigned resources daily.</i> | | | | | | | |
| Fireline EMT / Medic's Division / Branch Location | | | | | | | |
| Air Hoist site location site: Lat: / Long: / Elevation: | | | | | | | |
| Helispot: Lat: / Long: / Elevation: | | | | | | | |
| 7. Prepared By (Medical Unit Leader) | | | 8. Date/Time | | 9. Reviewed By (Safety Officer) | | 10. Date/Time |
| BRANDON BENNEWATE MEDL | | | 07/17/2024 1600 | | Michael Seymour SOFC | | 07/17/2024 1600 |

MEDICAL PLAN (ICS 206 WF) CIIMT 12

Medical Incident Report

FOR A NON-EMERGENCY INCIDENT, WORK THROUGH CHAIN OF COMMAND TO REPORT AND TRANSPORT INJURED PERSONNEL AS NECESSARY.

FOR A MEDICAL EMERGENCY: IDENTIFY ON SCENE INCIDENT COMMANDER BY NAME AND POSITION AND ANNOUNCE "MEDICAL EMERGENCY" TO INITIATE RESPONSE FROM IMT COMMUNICATIONS/DISPATCH.

Use the following items to communicate situation to communications/dispatch.

1. CONTACT COMMUNICATIONS / DISPATCH (Verify correct frequency prior to starting report)

Ex: "Communications, Div. Alpha. Stand-by for Emergency Traffic."

2. INCIDENT STATUS: Provide incident summary (including number of patients) and command structure.

Ex: "Communications, I have a Red priority patient, unconscious, struck by a falling tree. Requesting air ambulance to Forest Road 1 at (Lat./Long.) This will be the Trout Meadow Medical, IC is TFLD Jones. EMT Smith is providing medical care."

Severity of Emergency / Transport Priority

RED / PRIORITY 1 Life or limb threatening injury or illness. Evacuation need is IMMEDIATE

Ex: Unconscious, difficulty breathing, bleeding severely, 2^o - 3^o burns more than 4 palm sizes, heat stroke, disoriented.

YELLOW / PRIORITY 2 Serious Injury or illness. Evacuation may be DELAYED if necessary.

Ex: Significant trauma, unable to walk, 2^o - 3^o burns not more than 1-3 palm sizes.

GREEN / PRIORITY 3 Minor Injury or illness. Non-Emergency transport

Ex: Sprains, strains, minor heat-related illness.

Nature of Injury or Illness & Mechanism of Injury

Brief Summary of Injury or Illness (Ex: Unconscious, Struck by Falling Tree)

Transport Request

Air Ambulance / Short Haul/Hoist Ground Ambulance / Other

Patient Location

Descriptive Location & Lat. / Long. (WGS84)

Incident Name

Geographic Name + "Medical" (Ex: Trout Meadow Medical)

On-Scene Incident Commander

Name of on-scene IC of Incident within an Incident (Ex: TFLD Jones)

Patient Care

Name of Care Provider (Ex: EMT Smith)

3. INITIAL PATIENT ASSESSMENT: Complete this section for each patient as applicable (start with the most severe patient)

Patient Assessment: See IRPG PAGE 106

Treatment:

4. TRANSPORT PLAN:

Evacuation Location (if different): (Descriptive Location (drop point, intersection, etc.) or Lat. / Long.) Patient's ETA to Evacuation Location:

Helispot / Extraction Site Size and Hazards:

5. ADDITIONAL RESOURCES / EQUIPMENT NEEDS:

Example: Paramedic/EMT, Crews, Immobilization Devices, AED, Oxygen, Trauma Bag, IV/Fluid(s), Splints, Rope rescue, Wheeled litter, HAZMAT, Extrication :

6. COMMUNICATIONS: Identify State Air/Ground EMS Frequencies and Hospital Contacts as applicable

| Function | Channel Name/Number | Receive (RX) | Tone/NAC * | Transmit (TX) | Tone/NAC * |
|-------------|---------------------|--------------|------------|---------------|------------|
| COMMAND | | | | | |
| AIR-TO-GRND | | | | | |
| TACTICAL | | | | | |

7. CONTINGENCY: Considerations: If primary options fail, what actions can be implemented in conjunction with primary evacuation method? Be thinking ahead. .

8. ADDITIONAL INFORMATION: Updates/Changes, etc. .

REMEMBER: Confirm ETA's of resources ordered. Act according to your level of training. Be Alert. Keep Calm. Think Clearly. Act Decisively. .