



Saturday

# INCIDENT ACTION PLAN SHELLY INCIDENT

CA-KNF-005159  
P5 R18J (0505)



## OPERATIONAL PERIOD

7/27/2024 0700

to

7/28/2024 0700



Check-In, IAP, Maps  
Demob, Briefing

**THIS PAGE INTENTIONALLY LEFT BLANK**

# INCIDENT OBJECTIVES (ICS 202)

<b>1. Incident Name:</b> SHELLY	<b>2. Operational Period:</b>	Date From: 7/27/2024	Date To: 7/28/2024
		Time From: 0700	Time To: 0700

**3. Objective(s):**

**Leaders Intent**

- Implement a full suppression strategy on the Shelly Fire. The identified values at risk include human safety, private timberlands, communities, cultural resources, and wilderness areas. Apply tactics that offer the highest probability of success.
- All incident assigned personnel should be prepared to take appropriate actions regarding:
  - Personal safety and the safety of others, including driving slowly and defensively.
  - Professional behavior, conduct, and timely / effective communication.
  - Manage fatigue by taking breaks and maintaining work / rest cycles.
  - Provide the highest level of customer service to all involved with or impacted by the Shelly Fire.

**Management Objectives**

- Provide for firefighter and public safety through hazard recognition and application of the risk management process.
- Coordinate all public information to provide timely and continuous information to affected agency partners, cooperators, and to the public.
- Coordinate suppression activities with assigned incident Resource Advisors to minimize impacts on natural and cultural resources.
- Maintain relationships with partner agencies, elected officials, organizations, tribes, neighboring landowners, and community groups and members.
- Implement fire suppression repair activities in accordance with approved suppression repair plans.

**Control Objectives**

- Keep the Shelly Fire contained to the current fire perimeter to prevent the fire from spreading to private property, surrounding communities and values at risk.
- Stay in alignment with the Incident Suppression Repair Plan in conjunction with Agency Administrators.

**5. Site Safety Plan Required?** Yes  No

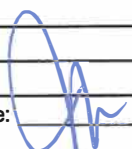
**Approved Site Safety Plan(s) Located at:**

**6. Incident Action Plan**

- |                                             |                                                      |                                                      |                                                                 |
|---------------------------------------------|------------------------------------------------------|------------------------------------------------------|-----------------------------------------------------------------|
| <input checked="" type="checkbox"/> ICS 203 | <input type="checkbox"/> ICS 215A                    | <input checked="" type="checkbox"/> HR Message       | <input checked="" type="checkbox"/> PIO Message                 |
| <input checked="" type="checkbox"/> ICS 204 | <input checked="" type="checkbox"/> ICS 220          | <input checked="" type="checkbox"/> Training Message | <input type="checkbox"/> Helicopter Extraction Operations       |
| <input checked="" type="checkbox"/> ICS 205 | <input checked="" type="checkbox"/> Facility Maps    | <input checked="" type="checkbox"/> Travel Map       | <input checked="" type="checkbox"/> Fire Supression Repair Plan |
| <input checked="" type="checkbox"/> ICS 206 | <input checked="" type="checkbox"/> Weather Forecast | <input checked="" type="checkbox"/> Demob Plan       | <input type="checkbox"/> Line Order Worksheet                   |
| <input checked="" type="checkbox"/> ICS 208 | <input checked="" type="checkbox"/> Fire Behavior    | <input checked="" type="checkbox"/> Finance Message  | <input checked="" type="checkbox"/> ICS 214                     |

<b>7. Prepared By:</b> G. Funderburk / G. Garcia / J. Roberts (T)	<b>Position/Title:</b> PSC	<b>Signature:</b>
<b>8. Approved by Incident Commander:</b> ICS 202	J. Goss / G. Magaña J. McGowan / J. McGough K. Allison (T)	<b>Signature:</b>

## ORGANIZATION ASSIGNMENT LIST (ICS 203)

<b>1. Incident Name:</b> SHELLY		<b>2. Operational Period: Date From:</b> 7/27/2024		<b>Date To:</b> 7/28/2024	
		<b>Time From:</b> 0700		<b>Time To:</b> 0700	
<b>3. Incident Commander(s) and Command Staff:</b>			<b>7. Operation Section:</b>		
IC/UC's	J. Goss / G. Magaña / J. McGough (T) / K. Allison (T)	Operations	T. Thane / E. Schwab / C. Childers / M. Todd (T)		
Deputy	J. McGowan / K. Tsudama (T)	Deputy Operations	D. Esades (T)		
Safety Officer	J. Nickey / T. Mott / J. Novak	Night Ops			
Information Officer	R. Lubben				
Liaison Officer	D. Miller (T)	<b>Branch</b>	<b>X</b>	<b>S. Santos</b>	
<b>4. Agency/Organization Representatives:</b>		Division/Group	A	R. Riddle	
Agency/Organization	Name	Division/Group	B/C	D. Havina	
USFS	J. Kuiken / D. Carlson (T)	Division/Group	FSR 1	G. Pelsma	
CALFIRE	G. Roath	Division/Group	ROAD	D. Fraley	
CDCR	J. Leventon	Division/Group			
CCC	B. Cody (Yreka) / A. Garcia (Etna)	<b>Branch</b>	<b>XX</b>		
Timber Industries	D. Quigley	Division/Group	D/E	K. Cummings	
READ	C. Atwood / C. Vialpando	Division/Group			
BIA	G. Perry	Division/Group			
Quartz Valley Tribe	Chairman H. Bennett	Division/Group			
OES	R. Young	Division/Group			
		<b>Branch</b>	<b>XXX</b>		
		Division/Group	F/G/M	Unstaffed	
		Division/Group	T	J. Airhart	
		Division/Group			
		Division/Group			
		<b>Branch</b>	<b>FSR</b>	<b>S. Pindell / S. Wilson (Dep.)</b>	
		Division/Group	FSR North	J. Karp	
		Division/Group	FSR South	J. Wildt (T)	
<b>5. Planning Section:</b>		Division/Group			
Chief	G. Funderburk / G. Garcia / J. Roberts (T)	Division/Group			
Deputy	J. Worden / J. Anderson (T)	Division/Group			
Resource Unit	B. Dameron / T. Lewis / M. Thomas J. Abasolo / B. Brown (T) / T. Hullquist (T)	Division/Group			
Situation Unit	J. Handrick / J. Abeel	<b>Branch</b>			
Documentation Unit	RIST	Division/Group			
Demobilization Unit	E. Morgan / E. Litteral	Division/Group			
GISS	M. Hans / J. Roberts / D. Beasley (V) / C. Poli D. Watkins (T) / A. Mead (T)	Division/Group			
FBAN	S. Volmer / A. Giery (T)	Division/Group			
IMET		Division/Group			
Training Tech Spec	R. Rivelle / S. Vargas	<b>Air Operations Branch</b>		<b>Director:</b>	<b>R. Terracciano / T. Swanson / C. Wallace (T)</b>
SOPL	P. Doyle	Air Support Group Supervisor		K. Christy	
ITSS	U. Huerta / J. Huerta	Air Tactical Group Supervisor		I. Flattley / L. Murphy (T)	
<b>6. Logistics Section</b>		Scott Valley Helibase Manager		L. Stewart	
Chief	D. Winn / D. Turner / R. David / J. Warden				
Supply Unit	M. Bouslaugh / R. Pecnick / R. Griffith / G. Camey	<b>8. Finance/Administration Section:</b>			
Facilities Unit	N. Sablan / J. Finley	Chief	L. Wilson / D. Hulett / J. Tapia		
Ground Support Unit	D. Trussell / D. Corral / C. Christopherson	Time Unit	T. Reniff / A. Rivera		
Communications Unit	K. Kerwin / J. Carter (T)	Procurement Unit	J. Williams (T) / R. Leanos		
Medical Unit	K. Packwood / M. Vieraa / A. Hendrie	Comp/Claims Unit	J. Chastain		
Food Unit	R. Washington / M. Rivera	Cost Unit	E. Molina / B. Hughes		
Motel Unit	J. Tomsich				
<b>Prepared By:</b>	G. Funderburk / G. Garcia / J. Roberts (T)	<b>Position/Title:</b>	PSC	<b>Signature:</b>	
<b>ICS 203</b>		<b>Date/Time:</b>	7/26/2024	<b>2300 hours</b>	<b>NIMS IAP</b>

## FIRE BEHAVIOR FORECAST

<b>FORECAST NUMBER:</b> 22	<b>TYPE OF FIRE:</b> Wildfire
<b>FIRE NAME:</b> Shelly	<b>OPERATIONAL PERIOD:</b> 07/27 to 07/28 0700 to 0700
<b>DATE ISSUED:</b> July 26, 2024	<b>TIME ISSUED:</b> 1800
<b>UNIT:</b> Klamath National Forest	<b>SIGNED:</b> /s/ Stephen Volmer FBAN

### WEATHER SUMMARY

- Lower temperatures and higher humidity will enter the area. Expect moderate overnight recovery.
- Winds in the area will shift from SE to NE to W throughout the day with ridgetop gusts up to 22 mph.

\*\*See weather forecast for more details\*\*

### FIRE BEHAVIOR

#### GENERAL:

- Shelly fire is within the Fuels and Fire Behavior Advisory Area (NC04) Northwestern Mtn.
- Probability of ignition will begin to decrease with the incoming humidity and moderate overnight recovery for the next 3 days, then begin to increase again next week.
- Fire behavior will continue smolder and creep but could become active when in alignment with afternoon winds. Smoldering heavy fuels remain a large potential heat and ignition source.
- Smoke production will decrease over the next few day, as fuels continue to burn out,
- Fuels outside the fire perimeter remains extremely dry and receptive to new ignitions.

\*\*See attached Fuels and Fire Behavior Advisory\*\*

#### SPECIFIC:

**Branch X:** Isolated areas of scattered heat exist. These can continue to smolder until suppressed or consumed completely. Smoke may be visible in interior areas. The large island, between DIV A and DIV T in the Shelly Fork has areas of unburned fuel. These islands will continue to burnout.

**Branch XX:** The western side of Div F still holds areas of scattered heat along fires edge. Remaining heat in the heavy fuels will continue to produce smoke. Roll out and fire weakened timber on the steep may ignite patches of fuel below underslung line.

**Branch XXX:** Fire continues to smolder and produce smoke in sparse and separated fuels of the interior areas. This will continue until fuels are extinguished or completely consumed. The large island between, DIV T and DIV A in the Shelly Fork has interior fuels which will continue to burn out.

**Suppression Branch:** Fuels are very dry and extremely receptive to potential ignitions. Use caution when walking heavy equipment in and out of areas and moving off of roadways.

**AIR OPERATIONS:**                      **Sunset:** 8:33pm                      **Sunrise:** 6:03 am

Sky/weather clear. Continued breezy West winds, especially across the ridgetops and peaks. West transport winds 15-25mph will push any heavy smoke production to the East.

#### SAFETY:

Stump holes and pockets of heavy fuels will continue to produce extreme heat. Watch where you walk. Fire weakened timber and branches will release without notice. Be alert when working in forested areas.

# Fuels and Fire Behavior Advisory

## California Grass and Herbaceous-Dominated Ecosystems

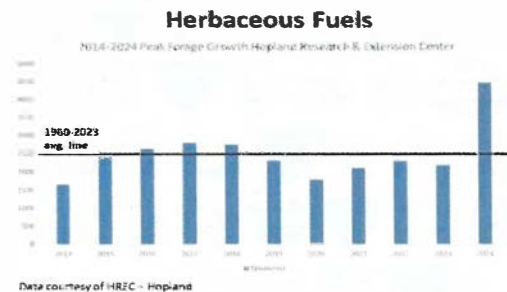
July 22, 2024



**Subject:** Herbaceous fuel loading is above to well above average across most of California's grass-dominated systems, including typically arid deserts and valleys that often do not support fire growth.

**Discussion:** Precipitation and temperature alignments throughout the winter and spring of 2024 have resulted in an above average load of herbaceous fuels across many grass-dominated systems throughout California. The above normal grass and herbaceous load creates a continuous fuel bed, allowing for rapid spread of fires when these fuels are cured. The continuous nature of the herbaceous fuel bed is enhanced by remnant thatch resulting from herbaceous growth during the abnormally wet late summer and fall of 2023 and multiple consecutive years of above average herbaceous growth.

**Difference from normal conditions:** Herbaceous fuel loadings in the California Coast Ranges, Sierra Foothills, and areas east of the Sierra Crest range from 120% to as much as 198% of normal. Below 3,000 ft. these fuels are nearly to fully cured. Curing and drying in the area of concern was enhanced during a recent heat wave and period of widespread humidity values in the teens to single digits and poor overnight humidity recovery.



### Concerns to Firefighters and the Public:

- Continuous and above normal fuel loading lowers the wind speed threshold needed to initiate rapid spread of fires during initial attack. Under what are typically low to moderate wind speeds, rates of spread and flame lengths are likely to exceed direct attack capabilities.
- Areas that typically resist fire spread, such as grazed areas, may not slow fire growth or reduce fire behavior as expected.
- Continuous fuels in arid and semi-arid ecosystem, such as deserts and high valleys, are likely to support continuous fire spread in areas typically considered non-burnable.
- Heavy and continuous cured herbaceous fuels may serve as a catalyst for fire spread into brush fuel types, even at fuel moisture levels that would otherwise make them resistant to rapid fire spread.

### Mitigation Measures:

- Brief all incoming resources about these conditions, especially out-of-area resources unfamiliar with local conditions.
- Consider augmentation of initial attack resources in areas of heavy herbaceous fuels.
- Fire behavior prediction simulations using fuel models GR1 and GR2 are likely to underpredict spread; modification to GR4 or GR7 may be needed to accurately model fire spread in herbaceous fuels.
- Modify tactics to account for increased fire line intensity and spotting.

### Area of Concern:

Across Central and Southern California, areas of concern focus on foothills, grasslands and deserts at or below 3,000 ft. in elevation. This includes portions of the following predictive services areas: NC02, NC03A, NC03B, NC04, NC05, NC07, and all South Ops PSA's.

Across the northeast portion of the state this includes hills, valleys, and deserts near and below 5,500 ft in elevation in parts of predictive services areas NC06 and NC08.

**Issued By:** Predictive Services Units from Northern California and Southern California, in coordination with Cal Fire and Cal OES Fire and Rescue Division.

# FIRE WEATHER FORECAST

FORECAST NO. 22

NAME OF INCIDENT: Shelly

PREDICT ION FOR: Saturday July 27, 2024

UNIT: Klamath National Forest \_\_\_\_

TIME AND DATE

FORECAST ISSUED: 1800 Friday 7/26/24

SIGNED: David J Shallenberger

David Shallenberger IMET - (606) 481-9238

**WEATHER DISCUSSION:** The upper low will come ashore south of the incident near central California during the morning hours of Saturday. The ridge is expected to be weakened and shunted to the east as the low tracks across California during the day on Saturday. This will lead to cooler temperatures across the area and some relief in the winds. RH values will continue to remain dry for the start of the weekend.

## TODAY:

**WEATHER:** Mostly Sunny. Warm, dry, and breezy.

**MAXIMUM TEMPERATURE:** Highs ranging from the low 80s at 6000 feet to upper 80s to low 90s in the valleys.

**MINIMUM RELATIVE HUMIDITY:** 12-17% in valleys to 18-23% along ridges.

## 20 FOOT WINDS:

**SW of the PCT** – Up-slope winds of 3-6 mph mid to late morning becoming mainly W up-canyon 8-12 mph early afternoon with gusts of 15-18 mph mid to late afternoon and up to 18 to 22 mph along ridges. Sheltered valleys/drainages remain upcanyon around 8-12 mph.

**NE of the PCT** – Up-slope winds of 3-5 mph, becoming SE to NE up-canyon 5-8 mph early afternoon. Then shifting to W around 1300 as the general winds take over, increasing to 8-12 mph with gusts to 18 to 22 mph late afternoon through evening along ridges. Sheltered valleys/drainages remain upcanyon around 10-15 mph.

**STABILITY:** Valley inversions breaking 1000-1100, then unstable through the afternoon.

**CHANCE OF THUNDERSTORMS:** 0%

**TRANSPORT WIND:** W 15-25 mph

---

## TONIGHT:

**WEATHER:** Clear.

**MINIMUM TEMPERATURE:** low to mid 60s along slopes & ridges and mid 50s in valleys.

**MAXIMUM RELATIVE HUMIDITY:** Around 30-40% slopes & ridges and 40-50% valleys.

**20 FOOT WINDS:** W 8-12 mph, gusts to 16 mph, diminishing around 2300 then becoming 4-8 mph along ridges with downslope/down-valley 2-4 mph elsewhere.

**STABILITY:** Inversion sets in just after 2200.

**CHANCE OF THUNDERSTORMS:** 0%

**TRANSPORT WIND:** W 5-10 mph

**OUTLOOK FOR SUNDAY THROUGH WEDNESDAY:** By the Sunday period, the mentioned upper low will have tracked into Nevada leaving the incident over an area of troughing. This will continue to lead to cooler temperatures with highs in the ridges and slopes in the low to mid 80s and the valleys in the upper 80s to near 90. Cooler temperatures will mean slightly higher RH values as well with ridges and slopes 20% to 25% and valleys 15% to 20%. Winds will slowly be on the increase as another trough approaches for Mon and Tues. Expect wind gusts on Sunday to be from the northwest at 24 to 26 mph. Mon and Tues will bring cloud cover and cooler temperatures, and higher RH and also a small chance of showers and thunderstorms. Wednesday will begin a period of warming and drying as the ridge reestablishes.

Please email weather obs to [david.shallenberger@noaa.gov](mailto:david.shallenberger@noaa.gov) or text them to 606-481-9238. Thanks!

# ASSIGNMENT LIST (ICS 204 WF)

CONTROLLED UNCLASSIFIED  
INFORMATION//BASIC

<b>1. Incident Name:</b>	<b>2. Operational Period:</b>	<b>3. Branch</b>	<b>Division</b>
<b>SHELLY</b>	Date From: 07/27/24      Date To: 07/28/24 Time From: 0700              Time To: 0700	<b>X</b>	<b>A</b>
<b>4. Operations Personnel:</b>		Page 1 of 1	Alpha

Operations Section Chief: <b>T. Thane / E. Schwab / C. Childers / M. Todd (T)</b>	Night Ops:
Branch Director: <b>S. Santos</b>	Branch Safety: <b>T. Quigley</b>
Division/Group Supervisor: <b>R. Riddle</b>	Air Attack: <b>I. Flattley / L. Murphy (T)</b>

5. Resources Assigned:	** Resources Below in Bold are 12 Hour **						
Resource Identifier	ALS	LWD	Leader	Personnel	Request #	Hours	Reporting Location
<b>CST1 SKU 9262G (CAL FIRE)</b>			<b>C. Cohen</b>	28	<b>C-20023</b>	<b>0700-1900</b>	<b>DP 2</b>
<b>CR2I BLM FOLSOM LAKE</b>		<b>7/28</b>	<b>R. Hooper</b>	20	<b>C-81</b>	<b>0700-1900</b>	<b>DP 2</b>
<b>FMOD PVT HOMELAND</b>		<b>8/2</b>	<b>J. Sansaver</b>	2	<b>O-46</b>	<b>0700-1900</b>	<b>DP 2</b>
<b>TFLD(T) MILLER</b>		<b>8/1</b>	<b>J. Miller</b>	1	<b>O-513</b>	<b>0700-1900</b>	<b>DP 2</b>
<b>REMS 11</b>	<b>X</b>	<b>8/1</b>	<b>J. Reardon</b>	4	<b>O-20334</b>	<b>0700-1900</b>	<b>DP 2</b>
<b>AMBO 3 MTN MEDICS</b>	<b>X</b>	<b>8/1</b>	<b>S. Pello</b>	3	<b>E-210</b>	<b>0700-1900</b>	<b>DP 2</b>
<b>EMPF SCHOENBORN</b>	<b>X</b>	<b>8/7</b>	<b>M. Schoenborn</b>	1	<b>O-20168</b>	<b>0700-1900</b>	<b>DP 2</b>
<b>EMTF HAWK</b>		<b>8/7</b>	<b>C. Hawk</b>	1	<b>O-20164</b>	<b>0700-1900</b>	<b>DP 2</b>

**6. Work Assignments:**  
 Patrol fire perimeter to ensure no rollout has occurred overnight.  
 Mop up to the extent feasible to prevent escape.  
 Back haul trash and excess supplies.

**7. Special Instructions:**

8. Communications								
Name	Ch	Function	Rx Freq	Rx Tone	Tx Freq	Tx Tone	Mode	Notes
NIFC C12	4	COMMAND	173.0375	(T3) 131.8	167.3250	(T3) 131.8	A	English Peak - All CMD repeaters linked
NIFC T4	9	TACTICAL	166.7250	(T3) 131.8	166.7250	(T3) 131.8	A	
A/G TAC	14	A/G TAC	168.3750	0.0	168.3750	0.0	A	
CALCORD	15	TACTICAL	156.0750	(T6) 156.7	156.0750	(T6) 156.7	A	
AIRGUARD	16	EMERGENCY	168.6250	0.0	168.6250	(T1) 110.9	A	

<b>9. Prepared by: Name:</b>	B. Dameron / T. Lewis / M. Thomas J. Abasolo / B. Brown (T) / T. Hullquist (T)	RESL	Signature:
<b>ICS 204</b>	Date/Time: 7/26/2024	2200	Personnel Count: 60



# ASSIGNMENT LIST (ICS 204 WF)

CONTROLLED UNCLASSIFIED  
INFORMATION//BASIC

<b>1. Incident Name:</b> <p style="text-align: center; font-size: 1.2em;"><b>SHELLY</b></p>		<b>2. Operational Period:</b> Date From: 07/27/24    Date To: 07/28/24 Time From: 0700    Time To: 0700				<b>3. Branch</b> <b>Division</b> <p style="text-align: center; font-size: 1.5em;"><b>X</b>            <b>B/C</b></p>		
<b>4. Operations Personnel:</b>				Page 1 of 2		Bravo/Charlie		
Operations Section Chief: <b>T. Thane / E. Schwab / C. Childers / M. Todd (T)</b>			Night Ops:					
Branch Director: <b>S. Santos</b>			Branch Safety: <b>T. Quigley</b>					
Division/Group Supervisor: <b>D. Havlina</b>			Air Attack: <b>I. Flattley / L. Murphy (T)</b>					
<b>5. Resources Assigned:</b>		<b>** Resources Below in Bold are 12 Hour **</b>						
Resource Identifier	ALS	LWD	Leader	Personnel	Request #	Hours	Reporting Location	
<b>CST1 SKU 9263G (CDCR)</b>			<b>J. Hoffmann</b>	36	<b>C-20040</b>	<b>0700-1900</b>	<b>DP 7</b>	
<b>CRW2 PACIFIC OASIS 190</b>		<b>7/28</b>	<b>J. Maza</b>	20	<b>C-78</b>	<b>0700-1900</b>	<b>DP 7</b>	
<b>CR2I ARDEN SOLUTIONS</b>		<b>7/28</b>	<b>J. Harrison</b>	20	<b>C-30</b>	<b>0700-1900</b>	<b>DP 7</b>	
<b>ENG6 NATIONAL FIRE</b>		<b>8/6</b>	<b>O. Arenas</b>	3	<b>E-153</b>	<b>0700-1900</b>	<b>DP 7</b>	
<b>DO22 PVT TYSON MORGAN</b>		<b>8/3</b>	<b>T. Morgan</b>	2	<b>E-215</b>	<b>0700-1900</b>	<b>DP 7</b>	
<b>DO22 PVT E-20075</b>		<b>7/28</b>	<b>K. Easley</b>	2	<b>E-20075</b>	<b>0700-1900</b>	<b>DP 7</b>	
<b>WTS2 JOHN SEMPLE 3</b>		<b>8/4</b>	<b>J. Goldie</b>	2	<b>E-89</b>	<b>0700-1900</b>	<b>DP 7</b>	
<b>WTS2 JOHN SEMPLE 2</b>		<b>8/4</b>	<b>B. Schmidt</b>	1	<b>E-88</b>	<b>0700-1900</b>	<b>DP 7</b>	
<b>WTS2 KENT JOHNSON</b>		<b>8/4</b>	<b>R. Brown</b>	1	<b>E-92</b>	<b>0700-1900</b>	<b>DP 7</b>	
<b>WTS1 PVT E-20308</b>		<b>7/31</b>	<b>M. Hilton</b>	2	<b>E-20308</b>	<b>0700-1900</b>	<b>DP 7</b>	
<b>WTS2 PVT E-20318</b>		<b>8/1</b>	<b>C. Jenkins</b>	2	<b>E-20318</b>	<b>0700-1900</b>	<b>DP 7</b>	
<b>WTS1 PVT E-20320</b>		<b>8/1</b>	<b>M. Hamilton</b>	2	<b>E-20320</b>	<b>0700-1900</b>	<b>DP 7</b>	
<b>WTS2 PVT E-20321</b>		<b>8/1</b>	<b>P. Seaber</b>	2	<b>E-20321</b>	<b>0700-1900</b>	<b>DP 7</b>	
<b>FMOD PVT RED FLAG 2</b>		<b>8/6</b>	<b>A. Fullerton</b>	2	<b>O-186</b>	<b>0700-1900</b>	<b>DP 7</b>	
<b>EXC1 PVT HACKER CONST</b>		<b>8/4</b>	<b>J. Wood</b>	2	<b>E-438</b>	<b>0700-1900</b>	<b>DP 7</b>	
<b>EXC2 PVT E-20385</b>		<b>8/8</b>	<b>B. Fulner</b>	2	<b>E-20385</b>	<b>0700-1900</b>	<b>DP 7</b>	
<b>EXC2 PVT E-20400</b>		<b>8/9</b>	<b>M. Craig</b>	1	<b>E-20400</b>	<b>0700-1900</b>	<b>DP 7</b>	
<b>CHP2 PVT NORTH ZONE 2</b>		<b>8/7</b>	<b>G. Inghram</b>	3	<b>E-57</b>	<b>0700-1900</b>	<b>DP 7</b>	
<b>6. Work Assignments:</b> Back haul trash and excess supplies. Identify and document fire suppression repair needs. Implement fire suppression repair plan.								
<b>7. Special Instructions:</b> Coordinate Porta-potty removal at N. Kidder Staging, DP 8 and DP 9. Continue dozer and handline repair.								
<b>8. Communications</b>								
Name	Ch	Function	Rx Freq	Rx Tone	Tx Freq	Tx Tone	Mode	Notes
NIFC C10	2	COMMAND	170.4125	(T3) 131.8	165.9625	(T3) 131.8	A	Quartz Lookout - All CMD repeaters linked
NIFC T1	6	TACTICAL	168.0500	(T3) 131.8	168.0500	(T3) 131.8	A	
A/G TAC	14	A/G TAC	168.3750	0.0	168.3750	0.0	A	
CALCORD	15	TACTICAL	156.0750	(T6) 156.7	156.0750	(T6) 156.7	A	
AIRGUARD	16	EMERGENCY	168.6250	0.0	168.6250	(T1) 110.9	A	
<b>9. Prepared by: Name:</b>			B. Dameron / T. Lewis / M. Thomas J. Abasolo / B. Brown (T) / T. Hullquist (T)		RESL		Signature:	
<b>ICS 204</b>		Date/Time: 7/26/2024		2200		Personnel Count: 105		

# ASSIGNMENT LIST (ICS 204 WF)

CONTROLLED UNCLASSIFIED  
INFORMATION//BASIC

<b>1. Incident Name:</b>	<b>2. Operational Period:</b>	<b>3. Branch</b>	<b>Division</b>
<b>SHELLY</b>	Date From: 07/27/24      Date To: 07/28/24 Time From: 0700              Time To: 0700	<b>X</b>	<b>B/C</b>

**4. Operations Personnel:** Page 2 of 2      Bravo/Charlie

Operations Section Chief: <b>T. Thane / E. Schwab / C. Childers / M. Todd (T)</b>	Night Ops:
Branch Director: <b>S. Santos</b>	Branch Safety: <b>T. Quigley</b>
Division/Group Supervisor: <b>D. Havlina</b>	Air Attack: <b>I. Flattley / L. Murphy (T)</b>

**5. Resources Assigned:** \*\* Resources Below in Bold are 12 Hour \*\*

Resource Identifier	ALS	LWD	Leader	Personnel	Request #	Hours	Reporting Location
CHP2 PVT GOD & COUNTRY		7/28	<b>A. Knott</b>	3	<b>E-390</b>	0700-1900	DP 7
TFLD NESS JR		7/29	<b>R. Ness Jr</b>	1	<b>O-234</b>	0700-1900	DP 7
TFLD(T) CARROLL		7/27	<b>B. Carroll</b>	1	<b>O-401</b>	0700-1900	DP 7
HEQB WILSON		7/31	<b>B. Wilson</b>	1	<b>O-297</b>	0700-1900	DP 7
HEQB(T) DOYLE		8/3	<b>R. Doyle</b>	1	<b>O-533</b>	0700-1900	DP 7
REMS 1	X	8/1	<b>A. Walker</b>	4	<b>O-54</b>	0700-1900	DP 7
AMBO 20	X	8/6	<b>Johansen</b>	2	<b>E-20221</b>	0700-1900	DP 7
EMPF SELLERS	X	7/31	<b>P. Sellers</b>	1	<b>O-268</b>	0700-1900	DP 7
EMTF(T) WAGNER		7/29	<b>A. Wagner</b>	1	<b>O-520</b>	0700-1900	DP 7

**6. Work Assignments:**  
 Back haul trash and excess supplies.  
 Identify and document fire suppression repair needs.  
 Implement fire suppression repair plan.

**7. Special Instructions:**  
 Coordinate Porta-potty removal at N. Kidder Staging, DP 8 and DP 9.  
 Continue dozer and handline repair.

**8. Communications**

Name	Ch	Function	Rx Freq	Rx Tone	Tx Freq	Tx Tone	Mode	Notes
NIFC C10	2	COMMAND	170.4125	(T3) 131.8	165.9625	(T3) 131.8	A	Quartz Lookout - All CMD repeaters linked
NIFC T1	6	TACTICAL	168.0500	(T3) 131.8	168.0500	(T3) 131.8	A	
A/G TAC	14	A/G TAC	168.3750	0.0	168.3750	0.0	A	
CALCORD	15	TACTICAL	156.0750	(T6) 156.7	156.0750	(T6) 156.7	A	
AIRGUARD	16	EMERGENCY	168.6250	0.0	168.6250	(T1) 110.9	A	

**9. Prepared by: Name:** B. Dameron / T. Lewis / M. Thomas  
 J. Abasolo / B. Brown (T) / T. Hullquist (T)      RESL

Signature:

ICS 204      Date/Time: 7/26/2024 2200      Personnel Count: 15





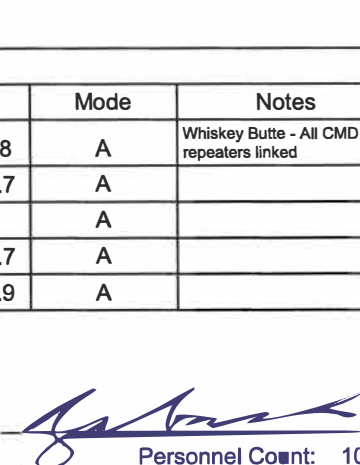






# ASSIGNMENT LIST (ICS 204 WF)

CONTROLLED UNCLASSIFIED  
INFORMATION/BASIC

<b>1. Incident Name:</b> <p style="text-align: center; font-size: 1.2em;">SHELLY</p>		<b>2. Operational Period:</b> Date From: 07/27/24    Date To: 07/28/24 Time From: 0700    Time To: 0700				<b>3. Branch</b> <b>Division</b> <p style="text-align: center; font-size: 1.2em;">FSR    FSR North</p>		
<b>4. Operations Personnel:</b>						Page 1 of 2		
Operations Section Chief: <b>T. Thane / E. Schwab / C. Childers / M. Todd (T)</b>				Night Ops:				
Branch Director: <b>S. Pindell / S. Wilson (Dep.)</b>				Branch Safety: <b>J. Smith / J. Barhart</b>				
Division/Group Supervisor: <b>J. Karp</b>				Air Attack: <b>I. Flattley / L. Murphy (T)</b>				
<b>5. Resources Assigned:</b>		<b>** Resources Below in Bold are 12 Hour **</b>						
Resource Identifier	ALS	LWD	Leader	Personnel	Request #	Hours	Reporting Location	
CRW2 PVT C-20034		7/29	<b>C. Rodriguez</b>	20	<b>C-20034</b>	<b>0700-1900</b>	<b>DP 9</b>	
CRW2 PVT C-20035		8/2	<b>F. Cisnero</b>	20	<b>C-20035</b>	<b>0700-1900</b>	<b>DP 9</b>	
CRW2 PVT C-20038		7/27	<b>A. Ramirez</b>	20	<b>C-20038</b>	<b>0700-1900</b>	<b>DP 9</b>	
CRW2 PVT C-20039		7/27	<b>A. Carstens</b>	20	<b>C-20039</b>	<b>0700-1900</b>	<b>DP 9</b>	
ENG3 J3 CONTRACTING 1		7/30	<b>C. Mcandrew</b>	3	<b>E-112</b>	<b>0700-1900</b>	<b>DP 9</b>	
ENG3 SABINO		7/30	<b>A. Beeley</b>	3	<b>E-114</b>	<b>0700-1900</b>	<b>DP 9</b>	
DOZ2 PVT D&C LOGGING		7/29	<b>D. Smiley</b>	2	<b>E-81</b>	<b>0700-1900</b>	<b>DP 9</b>	
DOZ2 PVT E-20061		7/29	<b>R. Carlton</b>	2	<b>E-20061</b>	<b>0700-1900</b>	<b>DP 9</b>	
DOZ2 PVT E-20080		7/28	<b>M. Henson</b>	2	<b>E-20080</b>	<b>0700-1900</b>	<b>DP 9</b>	
WTS1 PVT E-20047			<b>H. Hanna</b>	2	<b>E-20047</b>	<b>0700-1900</b>	<b>DP 9</b>	
WTS1 PVT E-20050		7/27	<b>A. Bennett</b>	2	<b>E-20050</b>	<b>0700-1900</b>	<b>DP 9</b>	
WTS1 PVT E-20240		7/29	<b>W. Reali</b>	1	<b>E-20240</b>	<b>0700-1900</b>	<b>DP 9</b>	
WTS1 PVT E-20242		7/29	<b>V. Reali</b>	2	<b>E-20242</b>	<b>0700-1900</b>	<b>DP 9</b>	
WTS2 PVT E-20248		7/30	<b>T. Hyberg</b>	2	<b>E-20248</b>	<b>0700-1900</b>	<b>DP 9</b>	
W/T TBD						<b>0700-1900</b>	<b>DP 9</b>	
FMOD PVT GOD & COUNTRY 1		8/6	<b>T. Barney</b>	2	<b>O-162</b>	<b>0700-1900</b>	<b>DP 9</b>	
FMOD PVT O-20222		7/30	<b>N. Crawford</b>	2	<b>O-20222</b>	<b>0700-1900</b>	<b>DP 9</b>	
MAST PVT JIM JOHNSON		8/6	<b>J. Downing</b>	3	<b>E-289</b>	<b>0700-1900</b>	<b>DP 9</b>	
<b>6. Work Assignments:</b> Identify and document fire suppression repair needs. Implement Fire Suppression Repair Plan. Backhaul all excess hose, appliances, and trash.								
<b>7. Special Instructions:</b>								
<b>8. Communications</b>								
Name	Ch	Function	Rx Freq	Rx Tone	Tx Freq	Tx Tone	Mode	Notes
NIFC C11	3	COMMAND	170.6875	(T3) 131.8	166.5750	(T3) 131.8	A	Whiskey Butte - All CMD repeaters linked
VTAC 12	12	TACTICAL	154.4525	(T6) 156.7	154.4525	(T6) 156.7	A	
A/G TAC	14	A/G TAC	168.3750	0.0	168.3750	0.0	A	
CALCORD	15	TACTICAL	156.0750	(T6) 156.7	156.0750	(T6) 156.7	A	
AIRGUARD	16	EMERGENCY	168.6250	0.0	168.6250	(T1) 110.9	A	
<b>9. Prepared by: Name:</b> B. Dameron / T. Lewis / M. Thomas J. Abasolo / B. Brown (T) / T. Hullquist (T)    RESL								
						Signature: 		
<b>ICS 204</b>		Date/Time: 7/26/2024 2200			Personnel Count: 108			



# ASSIGNMENT LIST (ICS 204 WF)

CONTROLLED UNCLASSIFIED  
INFORMATION//BASIC

<b>1. Incident Name:</b> <p style="text-align: center; font-weight: bold;">SHELLY</p>	<b>2. Operational Period:</b> Date From: 07/27/24    Date To: 07/28/24 Time From: 0700    Time To: 0700	<b>3. Branch</b> <b>Division</b> <p style="text-align: center; font-weight: bold;">FSR    FSR North</p>
------------------------------------------------------------------------------------------	---------------------------------------------------------------------------------------------------------------	------------------------------------------------------------------------------------------------------------

Page 2 of 2

<b>4. Operations Personnel:</b> Operations Section Chief: <b>T. Thane / E. Schwab / C. Childers / M. Todd (T)</b> Branch Director: <b>S. Pindell / S. Wilson (Dep.)</b> Division/Group Supervisor: <b>J. Karp</b>	Night Ops: Branch Safety: <b>J. Smith / J. Barhart</b> Air Attack: <b>I. Flattley / L. Murphy (T)</b>
----------------------------------------------------------------------------------------------------------------------------------------------------------------------------------------------------------------------------	-------------------------------------------------------------------------------------------------------------

5. Resources Assigned:	** Resources Below in Bold are 12 Hour **						Hours	Reporting Location
Resource Identifier	ALS	LWD	Leader	Personnel	Request #			
GRD2 PVT E-20275		7/30	<b>J. Simonis</b>	1	<b>E-20275</b>	<b>0700-1900</b>	<b>DP 9</b>	
EXC PVT E-20260		7/30	<b>J. Hudman</b>	1	<b>E-20260</b>	<b>0700-1900</b>	<b>DP 9</b>	
EXC1 PVT FIGAS E-454		8/3	<b>B. Figas</b>	1	<b>E-454</b>	<b>0700-1900</b>	<b>DP 9</b>	
EXC2 PVT E-20401			<b>T. Waterman</b>	1	<b>E-20401</b>	<b>0700-1900</b>	<b>DP 9</b>	
EXC2 PVT E-20383		8/4	<b>M. Johnson</b>	1	<b>E-20383</b>	<b>0700-1900</b>	<b>DP 9</b>	
EXC2 PVT E-20398			<b>D. Anderews</b>	1	<b>E-20398</b>	<b>0700-1900</b>	<b>DP 9</b>	
LOADER PVT E-20396		8/10	<b>R. Smith</b>	1	<b>E-20396</b>	<b>0700-1900</b>	<b>DP 9</b>	
CHP1 PVT FIGAS E-453		8/3	<b>B. Figas</b>	1	<b>E-453</b>	<b>0700-1900</b>	<b>DP 9</b>	
CHP1 PVT GE FORESTRY		7/28	<b>E. Rangel</b>	4	<b>E-389</b>	<b>0700-1900</b>	<b>DP 9</b>	
CHP1 PVT E-20426					<b>E-20426</b>	<b>0700-1900</b>	<b>DP 9</b>	
CHP2 PVT E-20294			<b>D. Lange</b>	2	<b>E-20294</b>	<b>0700-1900</b>	<b>DP 9</b>	
CHP2 PVT E-20296		7/30	<b>A. Larios</b>	2	<b>E-20296</b>	<b>0700-1900</b>	<b>DP 9</b>	
HEQB(T) MCCONNEL		8/5	<b>B. Mcconnel</b>	1	<b>O-20354</b>	<b>0700-1900</b>	<b>DP 9</b>	
FOBS(T) RAVENSCROFT		7/29	<b>J. Ravenscroft</b>	1	<b>O-20160</b>	<b>0700-1900</b>	<b>DP 9</b>	
FSRS COONEN		8/7	<b>N. Coonen</b>	1	<b>O-20384</b>	<b>0700-1900</b>	<b>DP 9</b>	
EMPF BLIVEN	X	8/5	<b>D. Bliven</b>	1	<b>O-524</b>	<b>0700-1900</b>	<b>DP 9</b>	
EMTF CARNEY		8/5	<b>S. Carney</b>	1	<b>O-521</b>	<b>0700-1900</b>	<b>DP 9</b>	
REAF MUMA		8/3	<b>R. Muma</b>	1	<b>O-556</b>	<b>0700-1900</b>	<b>DP 9</b>	
REAF CANN		7/30	<b>B. Cann</b>	1	<b>O-283</b>	<b>0700-1900</b>	<b>DP 9</b>	

**6. Work Assignments:**  
 Identify and document fire suppression repair needs.  
 Implement Fire Suppression Repair Plan.  
 Backhaul all excess hose, appliances, and trash.


**7. Special Instructions:**

8. Communications								
Name	Ch	Function	Rx Freq	Rx Tone	Tx Freq	Tx Tone	Mode	Notes
NIFC C11	3	COMMAND	170.6875	(T3) 131.8	166.5750	(T3) 131.8	A	Whiskey Butte - All CMD repeaters linked
VTAC 12	12	TACTICAL	154.4525	(T6) 156.7	154.4525	(T6) 156.7	A	
A/G TAC	14	A/G TAC	168.3750	0.0	168.3750	0.0	A	
CALCORD	15	TACTICAL	156.0750	(T6) 156.7	156.0750	(T6) 156.7	A	
AIRGUARD	16	EMERGENCY	168.6250	0.0	168.6250	(T1) 110.9	A	

<b>9. Prepared by: Name:</b>	B. Dameron / T. Lewis / M. Thomas J. Abasolo / B. Brown (T) / T. Hullquist (T)	RESL	Signature:
<b>ICS 204</b>	Date/Time: 7/26/2024	2200	Personnel Count: 22

# ASSIGNMENT LIST (ICS 204 WF)

CONTROLLED UNCLASSIFIED  
INFORMATION//BASIC

<b>1. Incident Name:</b> <p style="text-align: center; font-weight: bold;">SHELLY</p>		<b>2. Operational Period:</b> Date From: 07/27/24    Date To: 07/28/24 Time From: 0700    Time To: 0700				<b>3. Branch</b> <b>Division</b> <p style="text-align: center; font-weight: bold;">FSR    FSR South</p>		
<b>4. Operations Personnel:</b>						Page 1 of 1		
Operations Section Chief: <b>T. Thane / E. Schwab / C. Childers / M. Todd (T)</b>				Night Ops:				
Branch Director: <b>S. Pindell / S. Wilson (Dep.)</b>				Branch Safety: <b>J. Smith / J. Barhart</b>				
Division/Group Supervisor: <b>J. Wildt (T)</b>				Air Attack: <b>I. Flattley / L. Murphy (T)</b>				
<b>5. Resources Assigned:</b>		<b>** Resources Below in Bold are 12 Hour **</b>						
Resource Identifier	ALS	LWD	Leader	Personnel	Request #	Hours	Reporting Location	
<b>CRW2 PACIFIC OASIS 1</b>		<b>7/28</b>	<b>J. Sprigs</b>	20	<b>C-77</b>	<b>0700-1900</b>	<b>DP 6</b>	
<b>ENG6 MES 6217</b>		<b>7/27</b>	<b>S. Nichols</b>	4	<b>E-150</b>	<b>0700-1900</b>	<b>DP 6</b>	
<b>DOZ2 PVT E-20110</b>		<b>7/28</b>	<b>M. Gooden</b>		<b>E-20110</b>	<b>0700-1900</b>	<b>DP 6</b>	
<b>WTS2 WHITE</b>		<b>8/6</b>	<b>R. Goures</b>	2	<b>E-48</b>	<b>0700-1900</b>	<b>DP 6</b>	
<b>WTS1 PVT E-20088</b>		<b>7/28</b>	<b>D. Keef</b>	2	<b>E-20088</b>	<b>0700-1900</b>	<b>DP 6</b>	
<b>WTS1 PVT E-20192</b>		<b>7/28</b>	<b>S. Scheeps</b>	2	<b>E-20192</b>	<b>0700-1900</b>	<b>DP 6</b>	
<b>WTS1 PVT E-20194</b>		<b>7/28</b>	<b>S. Clark</b>	2	<b>E-20194</b>	<b>0700-1900</b>	<b>DP 6</b>	
<b>WTS1 PVT E-20198</b>		<b>7/28</b>	<b>H. Sprulock</b>	2	<b>E-20198</b>	<b>0700-1900</b>	<b>DP 6</b>	
<b>WTS1 PVT E-20199</b>		<b>7/28</b>	<b>B. Mong</b>	2	<b>E-20199</b>	<b>0700-1900</b>	<b>DP 6</b>	
<b>W/T TBD</b>						<b>0700-1900</b>	<b>DP 6</b>	
<b>GRD2 PVT E-20273</b>			<b>J. White</b>	1	<b>E-20273</b>	<b>0700-1900</b>	<b>DP 6</b>	
<b>EXC2 PVT E-20277</b>		<b>7/30</b>	<b>S. Clark</b>	1	<b>E-20277</b>	<b>0700-1900</b>	<b>DP 6</b>	
<b>SKID PVT E-20409</b>		<b>8/10</b>	<b>C. Schroeder</b>	2	<b>E-20409</b>	<b>0700-1900</b>	<b>DP 6</b>	
<b>CHP2 PVT E-20295</b>			<b>C. Haptonstall</b>	2	<b>E-20295</b>	<b>0700-1900</b>	<b>DP 6</b>	
<b>CHP1 PVT E-20330</b>		<b>8/1</b>	<b>B. Figas</b>	2	<b>E-20330</b>	<b>0700-1900</b>	<b>DP 6</b>	
<b>FSRS DENMAN</b>		<b>7/29</b>	<b>D. Denman</b>	1	<b>O-20206</b>	<b>0700-1900</b>	<b>DP 6</b>	
<b>FSRS POBURKO</b>		<b>8/9</b>	<b>J. Poburko</b>	1	<b>O-20406</b>	<b>0700-1900</b>	<b>DP 6</b>	
<b>EMPF PONCE</b>	X	<b>8/5</b>	<b>G. Ponce</b>	1	<b>O-523</b>	<b>0700-1900</b>	<b>DP 6</b>	
<b>EMPF LLAMAS</b>	X	<b>8/5</b>	<b>R. Llamas</b>	1	<b>O-526</b>	<b>0700-1900</b>	<b>DP 6</b>	
<b>6. Work Assignments:</b> Identify and document fire suppression repair needs. Implement Fire Suppression Repair Plan. Back haul trash and excess supplies.								
<b>7. Special Instructions:</b>								
<b>8. Communications</b>								
Name	Ch	Function	Rx Freq	Rx Tone	Tx Freq	Tx Tone	Mode	Notes
NIFC C11	3	COMMAND	170.6875	(T3) 131.8	166.5750	(T3) 131.8	A	Whiskey Butte - All CMD repeaters linked
VTAC 12	12	TACTICAL	154.4525	(T6) 156.7	154.4525	(T6) 156.7	A	
A/G TAC	14	A/G TAC	168.3750	0.0	168.3750	0.0	A	
CALCORD	15	TACTICAL	156.0750	(T6) 156.7	156.0750	(T6) 156.7	A	
AIRGUARD	16	EMERGENCY	168.6250	0.0	168.6250	(T1) 110.9	A	
<b>9. Prepared by: Name:</b>			B. Dameron / T. Lewis / M. Thomas J. Abasolo / B. Brown (T) / T. Hullquist (T)		RESL		Signature: 	
<b>ICS 204</b>		Date/Time: 7/26/2024		2200		Personnel Count: 48		

AIR OPERATIONS SUMMARY ICS-220						Time Prepared 1600	Date Prepared 7/26/2024	Prepared By <i>Cole Wallace</i>					
Incident Name / Number SHELLY			Sunrise 0600	Sunset 2034	Airport A30	Pumpkin 2030	Shutdown 2030	Operational Period - Date 7/27/2024			Operational Period - Time 0800-2030		
<b>General Remarks, Safety Notes, Hazards, Air Operations Special Equipment, etc.</b> <i>*All Aircraft orders go to Scott Valley Helibase, all drops will be tracked and recorded.</i> <i>*Be aware of retardant avoidance areas, 300ft away from waterways and bodies of water.</i> <i>*Sanitize Buckets before changing water sources.</i> <i>Aviation dally cost to: Scottvalley2023@gmail.com</i> <i>*All GPS is to be collected in DD* MM.MMM'</i>  <i>Remember: Tree canopy, vegetation, and smoke can limit pilots' ability to locate firefighters near the drop zone. Ensure that the drop zone is clear prior to the water/retardant drop! Always maintain situational awareness for snags, limbs, and loose rocks that might become displaced from the drop.</i>						<b>Helibase Information</b> Scott Valley Helibase A30 41 33.395 N 122 51.208 W 530-468-1294		<b>TFR Information</b> 4/7607 Day 4/8208 Night Altitude 11,000 MSL 41 29.4079 123 01.9938 TFR Frequency 120.525			<b>Medivac Ship Information</b>  <b>24hr Hoist</b> Call Sign- G823 Aircraft Model- Army UH60L Location-Benton Field 085  <b>Request Procedure for This Aircraft:</b>		
Incident Frequencies	RX	Tone	TX	Tone	AM/FM	Position	Name	Phone	Location/Equipment				
TFR Victor	120.5250		120.5250		AM	AOBD	Tom Swanson	805-903-3495	IMT6				
Rotor Victor	132.5750		132.5750		AM	AOBD	Rocco Terracciano	951-204-8461	IMT1				
Briefing Victor	125.1250		125.1250		AM	AOBD- T	Cole Wallace	530-551-1311	IMT1				
AirTactics	164.7750		164.7750		FM	ASGS-T	Kevin Christy	310-422-3832	IMT1				
A/G CMD	166.6000		166.6000		FM	HEBM-SVHB	Lee Stewart	775-220-6364	Scott Valley Airport				
A/G TAC	168.3750		168.3750		FM								
TOLC	169.2000		169.2000		FM								
DECK	163.1000		163.1000		FM								
AIR GUARD	168.6250		168.6250	110.9	FM	ATBM	Matt Libby	530-643-9887	SIY Tanker Base				
CALCORD	156.0750	156.7	156.0750	156.7	FM								
Montigue Airport	123.0000												
Scott Valley CTAF/Unicom	122.8000				AM	G823	James Beeson	510-755-8571	Benton Field 085				
National Flight Following	168.6500	110.9	168.6500	110.9	FM		Yreka Dispatch Aircraft Desk	530-842-7066					
HELICOPTERS - Scott Valley Helibase						HELICOPTERS - SIY Airport							
FAA #	TYPE	Make/Model	Helibase	Start	Avail	Remarks	FAA #	TYPE	Make/Model	Airport	Start	Avail	Remarks
(H502) N353JR	3	AS350B3E	SVHB	0800	0830	Recon, Buckets, PSD, IA							
(H532) N216GH	2	Bell 205A++	SVHB	0800	0830	Buckets, Troop transport, Recon							
N40HX	1	Kmax	SVHB	0800	0830	Buckets, Cargo							
FIXED WING AA/HLCO						Hoist/Medivac Information							
FAA #	Call Sign	Make/Model	Base	Start	Avail	Remarks	FAA #	TYPE	Make/Model	Airport	Start	Stop	Remarks
When 3 or more aircraft, request airattack through Communications.							G823	1	UH60L	85	24hr	24hr	ALS/NVG/Hoist-265ft Cable
							H14/H16	3	ASB350B3E	Redding	0600	0230	ALS/NVG/Hoist 165ft Cable
							N353SH	3	AS350B3E	Willow Cr	0800	2030	Short Haul (assigned to Hill)
							USCG	1	UH60	Mckinleville	24hr	24hr	HUU Fortuna ECC 707-726-1280



# SAFETY MESSAGE



*Fire fighter safety comes first on every fire, every time*

## Major Hazards and Risks:

### Travel:

- Make sure you do your pre -shift vehicle check. Get needed repairs before you break down on the incident.
- Maintain safe driving habits and keep your speeds appropriate. Watch your speed on HWY 3 in Scott Valley. There are also residents and firefighters on foot in the fire area. **Watch for public and other cars.**
- During this weekend plan on local Rodeo traffic and a motorcycle rally on local highway.
- Some of the roads are wash-boarded and graveled. Resist the urge to drive fast to smooth out the bumps. Stopping distances increases with the lower traction. There are also cattle in the open range.
- If in travel status heading home, make sure you follow your agency policy on driving and take breaks appropriately.

### FATIGUE

- Extended assignments can lead to a “slow burn” in fatigue.
  - This “slow burn” is an accumulation of low to moderate fatigue over several days on an incident(s).
  - This is more prevalent in the later days of an incident and can lead to complacency.
  - Monitor and maintain work-to-rest ratios.

Look out for each other.

### Hazardous Tree Indicators

It’s important to identify the hazardous trees in your work area before engaging.

- Strong winds
- Steep Slopes
- Disease or bug-kill timber
- Trees and duff have been burning for an extended period
- High-risk tree species wit shallow roots
- Numerous down trees
- Dead or broken tops and limbs overhead
- Accumulation of downed limbs
- Leaning or hung-up trees
- Look up, Look Down, Look Around

After identifying the hazard trees: look for hazard control measures to mitigate your risks. IRPG pgs. 20 & 21

**Safety Officers: Nickey/Mott**

INCIDENT RADIO COMMUNICATIONS PLAN (ICS 205)	Incident Name	Date/Time Prepared	Operational Period Date/Time
	<b>SHELLY SH717 Z2</b>	<b>7/26/2024 1400</b>	<b>7/27/2024 to 7/28/2024 0700 to 0700</b>

**CONTROLLED CLASSIFIED INFORMATION/BASIC**

**Utilization of any frequency other than those listed on this form are prohibited, subject to fines by the FCC and demobilization from the incident.**

Zn Ch	Function	Channel Name/Trunked Radio System Talkgroup	Assignment	RX Freq N or W	RX Tone/NAC	TX Freq N or W	Tx Tone/NAC	Dev	Pwr	Mode A, D or M	Remarks
1											
2	<b>COMMAND</b>	<b>NIFC C10</b>	<b>ALL DIVISIONS</b>	170.4125	Tone 3 131.8	165.9625	Tone 3 131.8	N	H	A	QUARTZ LOOKOUT - ALL CMD REPEATERS LINKED
3	<b>COMMAND</b>	<b>NIFC C11</b>	<b>ALL DIVISIONS</b>	170.6875	Tone 3 131.8	166.5750	Tone 3 131.8	N	H	A	WHISKEY BUTTE - ALL CMD REPEATERS LINKED
4	<b>COMMAND</b>	<b>NIFC C12</b>	<b>ALL DIVISIONS</b>	173.0375	Tone 3 131.8	167.3250	Tone 3 131.8	N	H	A	HELISPOT 5 - ALL CMD REPEATERS LINKED
5											
6	<b>TACTICAL</b>	<b>NIFC T1</b>	<b>DIV B/C</b>	168.0500	Tone 3 131.8	168.0500	Tone 3 131.8	N	H	A	
7	<b>TACTICAL</b>	<b>NIFC T2</b>	<b>DIV D/E</b>	168.2000	Tone 3 131.8	168.2000	Tone 3 131.8	N	H	A	
8											
9	<b>TACTICAL</b>	<b>NIFC T4</b>	<b>DIV A, DIV T</b>	166.7250	Tone 3 131.8	166.7250	Tone 3 131.8	N	H	A	
10	<b>TACTICAL</b>	<b>NIFC T5</b>	<b>ROADS GROUP</b>	166.7750	Tone 3 131.8	166.7750	Tone 3 131.8	N	H	A	TRAFFIC CONTROL
11	<b>TACTICAL</b>	<b>NIFC T6</b>	<b>FSR 1</b>	168.2500	Tone 3 131.8	168.2500	Tone 3 131.8	N	H	A	
12	<b>TACTICAL</b>	<b>VTAC 12</b>	<b>FSR NORTH &amp; SOUTH</b>	154.4525	Tone 6 156.7	154.4525	Tone 6 156.7	N	H	A	
13	<b>Air-to-Ground</b>	<b>A/G CMD</b>	<b>ALL DIVISIONS</b>	166.6000	NONE	166.6000	NONE	N	H	A	
14	<b>Air-to-Ground</b>	<b>A/G TAC</b>	<b>ALL DIVISIONS</b>	168.3750	NONE	168.3750	NONE	N	H	A	
15	<b>TACTICAL</b>	<b>CALCORD</b>	<b>MEDICAL</b>	156.0750	Tone 6 156.7	156.0750	Tone 6 156.7	N	H	A	
16	<b>EMERGENCY</b>	<b>AIRGUARD</b>	<b>EMERGENCY</b>	168.6250	NONE	168.6250	Tone 1 110.9	N	H	A	EMERGENCY ONLY

Prepared By (Communications Unit Leader)	Incident Location: Etna	Forest / Unit / Jurisdiction: Klamath NF
------------------------------------------	-------------------------	------------------------------------------

<b>Scott La Rue, COML (661) 400-3404 Communications 24hr: 510-507-1514</b>	County: Siskiyou	State: CA	Latitude: " N	Longitude: W
----------------------------------------------------------------------------	------------------	-----------	---------------	--------------

<b>INCIDENT RADIO COMMUNICATIONS PLAN (ICS 205)</b>	Incident Name <b>SHELLY IA</b>	Date/Time Prepared <b>7/26/2024 1400</b>	Operational Period Date/Time <b>7/27/2024 to 7/28/2024 0700 to 0700</b>
---------------------------------------------------------	-----------------------------------	---------------------------------------------	----------------------------------------------------------------------------

**CONTROLLED CLASSIFIED INFORMATION/BASIC**

**Utilization of any frequency other than those listed on this form are prohibited, subject to fines by the FCC and demobilization from the incident.**

Zn Ch	Function	Channel Name/Trunked Radio System Talkgroup	Assignment	RX Freq N or W	RX Tone/NAC	TX Freq N or W	Tx Tone/NAC	Dev	Pwr	Mode A, D or M	Remarks
1	<b>DISPATCH</b>	<b>FS KNF</b>	<b>DISPATCH</b>	171.5250	NONE	165.4125	OST	N	H	A	DISPATCH
2	<b>COMMAND</b>	<b>KNF SALMON</b>	<b>IA COMMAND</b>	172.4000	NONE	164.1250	OST	N	H	A	
3	<b>COMMAND</b>	<b>KNF RIVER</b>	<b>IA COMMAND</b>	172.2500	NONE	165.0750	OST	N	H	A	
4	<b>TACTICAL</b>	<b>R5 T4</b>	<b>IA TAC</b>	166.5500	NONE	166.5500	OST	N	H	A	
5	<b>Air-to-Ground</b>	<b>A/G 43</b>	<b>IA A/G</b>	167.6000	NONE	167.6000	OST	N	H	A	
6	<b>DISPATCH</b>	<b>SKU-L</b>	<b>DISPATCH</b>	151.3250	Tone 6 156.7	159.3600	OST	N	H	A	
7	<b>TACTICAL</b>	<b>CDF T9</b>	<b>IA TAC</b>	151.3850	Tone 16 192.8	151.3850	OST	N	H	A	TONE 16 (192.8)
8	<b>TACTICAL</b>	<b>CDF T10</b>	<b>IA TAC</b>	151.4000	Tone 16 192.8	151.4000	OST	N	H	A	TONE 16 (192.8)
9	<b>Air-to-Ground</b>	<b>CDF A/G 1</b>	<b>IA A/G</b>	151.2200	Tone 16 192.8	151.2200	OST	N	H	A	TONE 16 (192.8)
10											
11											
12											
13											
14	<b>Air-to-Ground</b>	<b>A/G TAC</b>	<b>ALL DIVISIONS</b>	168.3750	NONE	168.3750	OST	N	H	A	
15	<b>TACTICAL</b>	<b>CALCORD</b>	<b>ALL DIVISIONS</b>	156.0750	Tone 6 156.7	156.0750	OST	N	H	A	MEDICAL EVAC TONE 6 (156.7)
16	<b>EMERGENCY</b>	<b>AIRGUARD</b>	<b>EMERGENCY</b>	168.6250	NONE	168.6250	OST	N	H	A	EMERGENCY ONLY - TONE 1 (110.9)

Prepared By (Communications Unit Leader) <i>Scott La Rue</i>	Incident Location: ETNA	Forest / Unit / Jurisdiction: KLAMATH NF
<b>Scott La Rue, COML (661) 400-3404 Communications: 510-507-1514</b>	County: SISKIYOU State: CA	Latitude: " N Longitude: W



**Shelly Fire Ground Support**  
**Yreka Ground Support / Demob Inspections**

*279 Sharps Road Yreka, Ca 96097*

**Fuel Location**

*Mudd Lake Oil 1712 Fairlane Road, Yreka, Ca 96097 ICP*

**Repairs**

*Glen McHenry 530-598-2631*

**Ground Support**

*Jeremy Christofferson (GSUL) 951-287-0886*

*Kevin Berghaus (GSULT) 714-715-0481*

**Etna Ground Support / Demob Inspections**

*125 Horn Lane Etna, Ca, 96027*

**0600-2000**

**Ground Support**

*Ground Support Dave Trussell 530-251-3109*

*Ground Support Dave Corral 805-358-7532*

**Transportation**

*State Transportation Request Contact Charles Palmer (CJ) 530-925-4544*

*Federal Transportation Request Contact Miguel 209-768-0142*

# LG Reimbursement Message (CFAA)

## 2023 SRF Lightning Complex (CA-SRF-000986)

If you are responsible for completing F42's and reimbursement documentation, please ensure you are registered in MARS and have a Username and Password prior to DMOB as ALL F42's will be completed electronically through MARS.

### CAL OES Contact for 2023 SRF Lightning Complex

Cal OES AREP

Rick Young (916) 541-3165

[ricky.young@caloes.ca.gov](mailto:ricky.young@caloes.ca.gov)



Cal OES Check-In



MARS







## FINANCE MESSAGE



---

### CAL FIRE TIME Process

**Shift Tickets:** Line supervisors complete for Hired Equipment and submit hard copy to TIME, OR complete an e-Shift Ticket online at <https://shifftickets.fire.ca.gov>. Call EQTS Cameron Myers @ (530) 906-5930 for shift ticket processing and/or drop off.

**Personnel Time:** All CAL FIRE personnel check-in to TIME trailer located at fairgrounds in Yreka.

**Hired Equipment:** All Hired Equipment resources on a 20,000-block request number, check-in to TIME trailer located in Yreka with a copy of your agreement.

**Local Government:** Check-in with OES Rep, located at the fairgrounds in Yreka.

### COMP/CLAIMS

Report all injuries and damage claims to the Comp Claims Trailer located at Yreka Fairgrounds. Josh Chastain: (530) 922-0131

### AO-341 Hotel Rosters

Please sign the roster for every night.

### Feeding

Feeding is provided at the Yreka fairgrounds (Last Meal 7/27/2024 Breakfast).

Feeding is also provided at Etna Base Camp

Off-Site feeding: No Off-Site Feeding approved.



# PUBLIC INFORMATION

Public Information Line: 211

CURRENT INCIDENT STATUS	
<b>Incident Start Date:</b> 07/03/2024	<b>Incident Start Time:</b> 1:27 AM
<b>Cause:</b> Under Investigation	<b>Acres:</b>
<b>Containment:</b>	<b>Total Personnel:</b>

### MEDIA

California State Penal Code Section 409.5(d) allows the news media to enter scenes of disaster, riot, or civil disturbance. Correctly identified news media members should not be restricted from entering locations specified within the code. However, this does not include crime scenes or private property and does not imply that the news media may interfere with incident operations while in the areas of concern. More information can be found by following the QR code.



### PHOTOGRAPHS AND VIDEOS OF THE INCIDENT

The Public Information Office would like copies of the video and pictures that were safely took while not in an emergency, fire suppression activity, or overhead assignment. Bring video and pictures to the Public Information trailer; photos will be reviewed and possibly uploaded to social media. As a reminder the Public Information Office does not want photographs or videos that depict unsafe, unprofessional, or embarrassing circumstances, which are a severe breach of ethics.



### LOST AND FOUND

The Information Section will manage lost and found items for the incident at the PIO Trailer.

### SHELLY FIRE LINKTREE

Use the QR code to the right to get quick access to information about the current status of the fire and for resources for residents returning home for wildfire.



# Shelly Incident Fire Suppression Repair Specs on Forest Service Lands

Suppression repair on the Shelly incident may take place on areas where suppression activities occurred on Forest Service lands. The purpose for repair is to minimize suppression impacts to resources identified by the Klamath National Forest (e.g., cultural, trails, wildlife, roads, water quality, etc.). As needed, communicate Resource Advisors on repair activities to identify site-specific repair needs and avoid confusion. A REAF and/or ARCH may be required to be present during suppression repair activities. All suppression repairs will need inspection by READ shop personnel before the repair is considered complete. This document highlights key elements of the longer Fire Suppression Repair Plan.

## Fire Lines (Hand and Dozer)

- Construct water bars and/or rolling dips on fire lines (see Diagram 1 for effective water bars). Remove berms.
- Excavators are preferred over dozers for dozer line repairs; and use hand crews on dozer lines when in areas identified as sensitive.
- Use hand crews on hand lines.

## Discrete Suppression Activity Areas (Spike Camps, Drop Points, Staging Areas, Safety Zones, Tanks, Helispots, Sling Sites, etc.)

- Spread out any berms that were created.
- Unless directed otherwise, pile and plastic cover all slash generated during area construction for ease of future burning. Exception is Wilderness, where slash will be lopped and scattered.
- At Wilderness camps and sling sites, decompact soils at camp sites and user created trails, recontour tents sites, scatter slash or cut material, and dismantle structures such as campfire rings and latrines.

## FS System Trails

- Restore trail surface and water drainage features.
- Spread accumulations of duff and mineral soil but consider keeping foot trail to bare mineral soil. Desired trail bed

width is 24 inches on primary trails and 18 to 24 inches on secondary trails.

- Cut all trees fallen across trails to retain a minimum 8 ft corridor (4 ft from centerline in either direction) clear of logs for stock passage. Make only as many cuts as required to remove the log sections when in wilderness. Do not bevel or otherwise modify cut ends.
- In Wilderness, low stump. Do not waffle cut stumps.
- Pile and plastic cover all slash generated where feasible, i.e. at or near trailheads. Otherwise, scatter slash away from system trails used as fireline.
- See Diagram 2 for stock clearance distances

## Pacific Crest National Scenic Trail (PCT)

- Where PCT is in Wilderness, use Wilderness repair specs
- Where handlines cross or are immediately adjacent (and visible) to the PCT -
  - o Pull back berms, smooth out soil and recontour
  - o Disguise handline so it is not visible to the public
  - o Place cut ends of trees away from the trail
  - o Place vegetation in an “unorderly, natural, or jack-straw manner”
  - o Do not line the trail with parallel rocks or logs as such can create drainage issue long-term
  - o Disperse/hide cut rounds off trail

## Other Repair Concerns

- System roads utilized for fire suppression will be returned to pre-existing conditions. Consult with READ for specifics.
- Remove structure wrap, unnecessary flagging, and signage.
- For special circumstance suppression repair needs (wetlands and meadows, water sources, stream crossings, riparian areas, recreation) consult with READ.
- At risk sensitive natural cultural resource areas are flagged (orange and white striped). Impacts to these sites due to suppression repair shall be reported to the READ shop.
- Seed and mulch may be needed as per direction by READ.

# Shelly Incident Fire Suppression Repair Specs on Forest Service Lands

## Diagrams for Suppression Repair

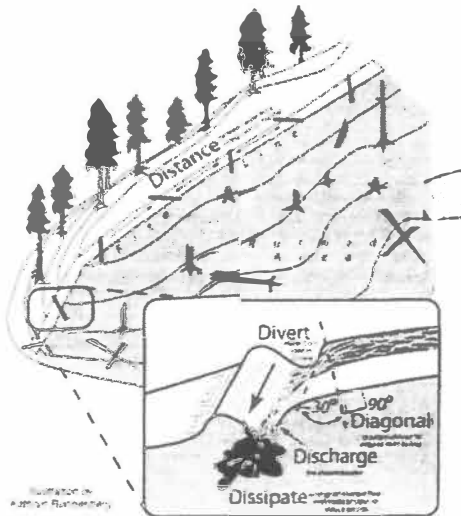
### Diagram 1

#### Effective Waterbars

When locating and building water bars, place them the right **distance** apart at a **diagonal** to the fire line, so that they **divert**, then **discharge**, then **dissipate** the energy of the flowing water. Be sure to make them deep enough so they'll be durable, and that soil does **not** block the water bar outlet.

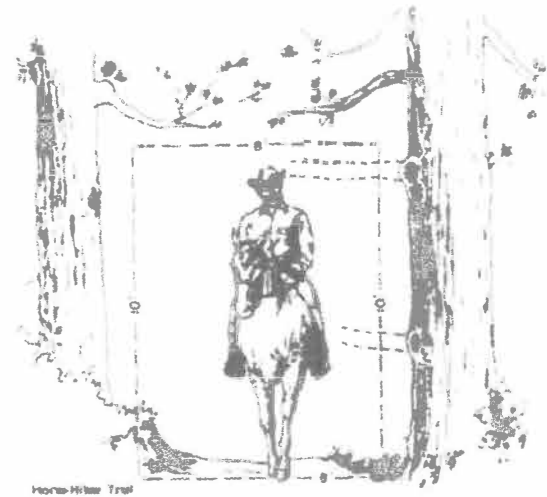
#### Recommended spacing for waterbars on firelines.

Fireline slope %	Maximum Distance Apart (feet)	
1-5	200	Waterbars should be at least 2 pulaski (4-6 inches) widths wide and 12-24 inches high for handlines.
6-20	125	
21-40	60	
41-60	40	
>60	25	



### Diagram 2

TRAVELWAY CLEARING



# Shelly Incident Fire Suppression Repair Plan – State DPA

## CA-KNF-005159

The Shelly Fire has burned in the steep headwater area of the Scott River. Due to the steep and highly erosive granitic soil types and sensitive nature of the watershed that contains such values as listed anadromous salmonids, Suppression Repair Specialists shall be used to supervise repair work and give final approval of finished work. Fire Suppression Repair within the State Direct Protection Area will occur on dozer lines, handlines, roads, and other areas utilized by fire suppression resources. The purpose of the repair is to mitigate possible adverse effects to resources resulting from fire suppression activities.

**Dozerlines-** Dozerline constructed on this incident varies between single blade width to five blade widths (approximately 12-50 feet). Berms and push-piles shall be spread to the extent feasible and cleared of organics. This is generally accomplished by back-blading with a tractor or with an excavator. Debris piled against standing timber shall be pulled back while taking care not to damage growing stock with the tractor blade or an excavator bucket and thumb. Masticators or chippers may be utilized to dispose of concentrated organic material along roads, around structures and in strategic areas (i.e. fuelbreaks). At heliports/ staging areas and safety zones, remove soil, and/or breach berms so that runoff can be dissipated. Cross-drain these areas to effectively dissipate water if necessary.

Waterbreaks shall be installed at a spacing which corresponds to a moderate and high hazard rating in the California Forest Practice Rules. The following waterbreak spacing information is a general guide for maximum spacing, actual location of waterbreaks should be tailored to the topography and placement should be suited to the best dispersal of water flow:

<u>Line Gradient</u>	<u>Maximum Waterbreak Spacing</u>
0-10%	200 Feet
11-25%	150 Feet
26-50%	100 Feet
>50%	75 Feet

Waterbreaks shall be constructed at an approximately 45-degree angle and shall be a minimum depth of 10 inches from the bottom of the cut to the top of the berm. Where possible the discharge from the waterbreaks shall be directed into vegetated areas to minimize erosive forces.

Where slopes exceed the range at which a tractor can effectively work, waterbreaks shall be constructed with handtools. Where dozerline has crossed watercourses, the channel of the watercourse will be cleared of soil and debris to re-establish the watercourse channel.

**Hand Constructed Fireline-** Hand constructed fireline shall have water breaks installed with hand tools. The waterbreaks shall be approximately 10 inches in depth from the bottom of the cut area to the top of the berm. Waterbreaks shall be angled at least 45 degrees to the fireline. The interval between waterbreaks shall be approximately 50 feet with closer spacing as needed on steep pitches. No waterbreaks shall be required where the fireline traverses a side hill, however if the line is cup trenched the berm shall be breached periodically to prevent channelization of runoff.

Where hand constructed fireline crosses a watercourse, any soil material deposited in the channel shall be removed and placed in a location where it will not wash back into the watercourse. Waterbreaks shall be installed on the approaches to the crossing to prevent sediment from eroding from the fireline into the watercourse.

**Fire Roads-** Roads used in fire suppression activities shall be left in at least as good a condition as they were found. Gravel and soil surface roads shall be watered to prevent excessive dust formation. Where suppression activities have damaged or rendered road drainage facilities non-functional, waterbreaks or drivable drainage dips shall be installed for drainage. Where suppression activities have filled in or damaged inside ditches, the ditches shall be cleaned and left unobstructed.

**Archaeological Resources** - If any sites are located during suppression repair activities, work will stop in that location and the Suppression Repair Lead will be notified.

**Other Repair Concerns-** Broken, damaged fences, and/or gates damaged as the result of the fire control operations shall be repaired.

If you have any questions, please contact Siskiyou Unit Forester, Steve Wilson at (530) 842-3516.

# *Training Specialist Message*

## Etna Camp:

---

### **How to register as a Trainee:**

1. Use the QR code or come by the training trailer.



### **How to close-out your training assignment:**

1. **Trainer and Trainee:** Have a conversation, open dialog on expectations and goals for the assignment.
2. **Trainer:** Complete an Evaluation Record in the back of the Position Task Book and make as many entries as possible within the individual tasks. Discuss this with your Trainee.
3. **Trainer:** Complete an individual performance rating (ICS 225) and go over the performance rating with your Trainee.
4. **Trainer and Trainee:** Come by the training trailer with the above documents to close out your assignment.

Robert Rivelle – TNSP  
707-498-1761  
rrivelle@nps.gov

# SHELLY FIRE DEMOB LIST

## SATURDAY 07/27/2024

### EQUIPMENT

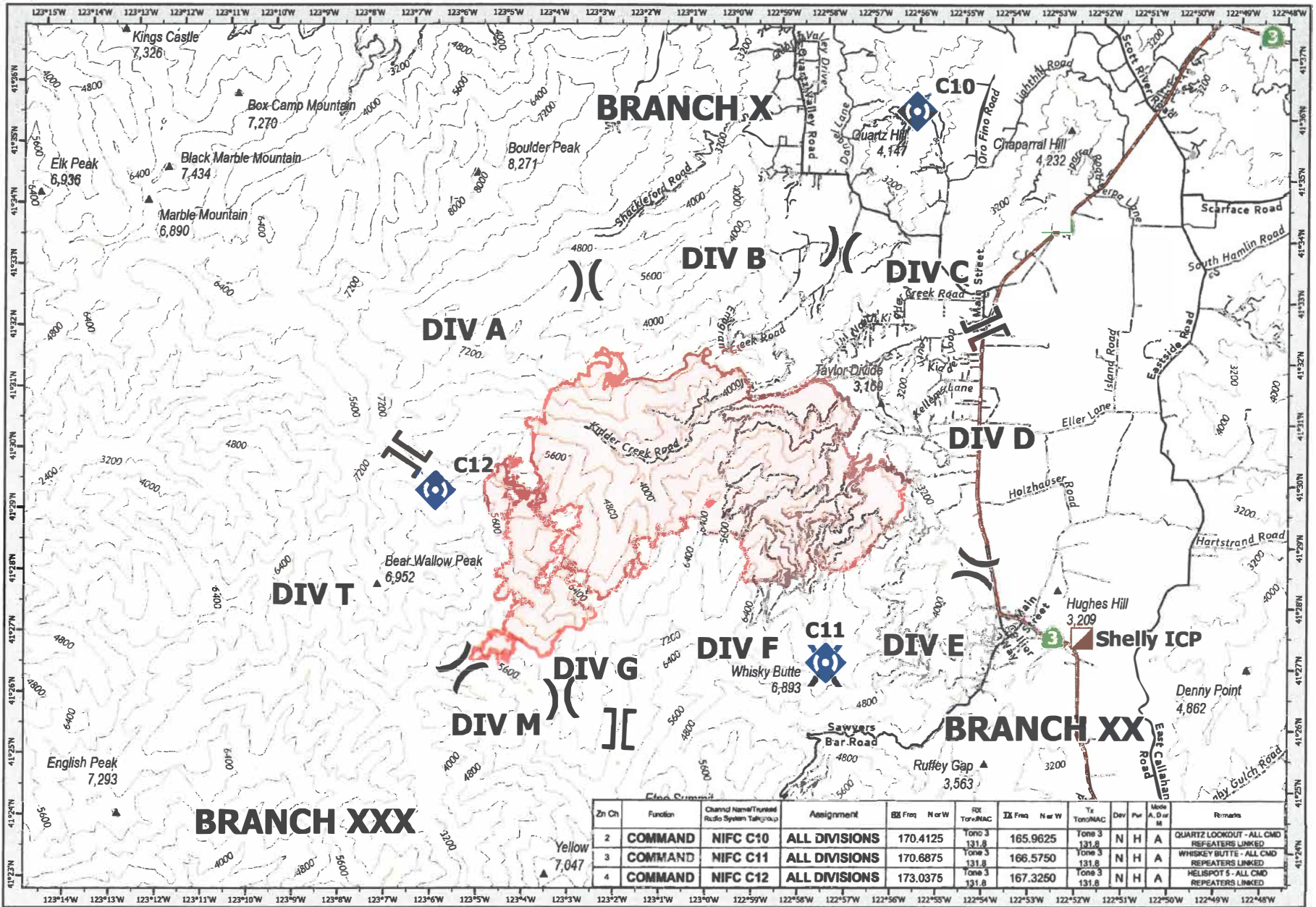
E-435	TUBG	AXSUS ENTERPRISES	0800
E-436	EXC1	AXSUS ENTERPRISES	0830
E-85	DZR2	ROSEANN GINOCHIO	0900

### OVERHEAD

O-338	SITL	HANDRICK, JON	0700
O-343	FOBS	NEGGERS, CHRIS	0710
O-401	TFLD	CARROLL, BRIAN	0720
O-423	PIOT	ANASTASIO, JODY	0730
O-425	ARCH	BAILEY, KEVIN	0740
O-426	FOBS	HERZOG, MATTHEW	0750
O-438	PIO3	MAHURIN, MEGHAN	0800
O-441	GSUL	MACIAS, MIGUEL	0810
O-449	PIOT	THURSTON, RACHAEL	0820
O-532	EQPM	POPWELL, DOUG	0830

Get checkout sheet at Demob trailer. Report to Finance at listed time.





Zn Ch	Function	Channel Name/Trunked Radio System Talkgroup	Assignment	BS Freq	N or W	RX TonnAC	TX Freq	N or W	Tx TonnAC	Dev	Pr	Mod	Remarks
2	COMMAND	NIFC C10	ALL DIVISIONS	170.4125		Tone 3 131.8	165.9625		Tone 3 131.8	N	H	A	QUARTZ LOOKOUT - ALL CMD REPEATERS LINKED
3	COMMAND	NIFC C11	ALL DIVISIONS	170.6875		Tone 3 131.8	166.5750		Tone 3 131.8	N	H	A	WHISKEY BUTTE - ALL CMD REPEATERS LINKED
4	COMMAND	NIFC C12	ALL DIVISIONS	173.0375		Tone 3 131.8	167.3250		Tone 3 131.8	N	H	A	HELISPOT 5 - ALL CMD REPEATERS LINKED

**COMMUNICATIONS**  
**SHELLY**  
 CA-KNF-005159  
 07/27/24 0700

- Shelly Fire
- Repeater
- ]] Branch Break
- Incident Command Post
- )) Division Break
- ▲ Gap; Summit

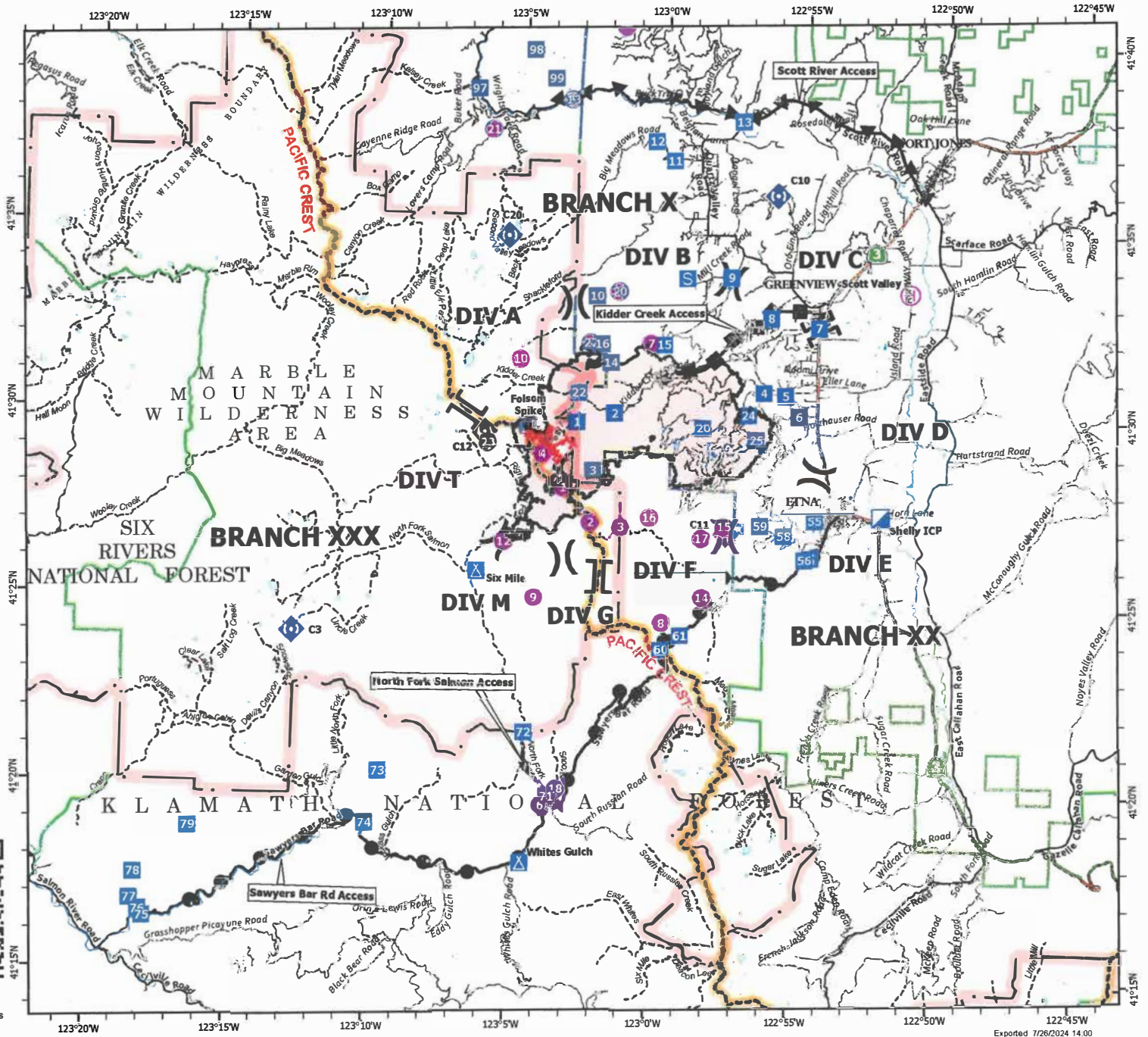




**TRANSPORTATION**  
**SHELLY**  
 CA-KNF-005159  
 07/27/2024



- Shelly Fire
- Contained Fire Edge
- Uncontained Fire Edge
- Branch Break
- Division Break
- Incident Command Post
- Drop Point
- Camp
- Staging Area
- Repeater
- Helibase
- Helispot
- Secondary Highway
- Major Road
- Minor Road
- Pacific Crest Trail
- Trails
- Wilderness
- Forest Boundary
- Transportation Routes**
- Kidder Creek Access
- North Fork Salmon Access
- Sawyers Bar Rd Access
- Scott River Access



0 1 2 3 4 5  
 Miles  
 NAD83 California (Teale) Albers

Exported 7/26/2024 14:00

**TRANSPORTATION**  
**SHELLY**  
 CA-KNF-005159  
 07/27/2024

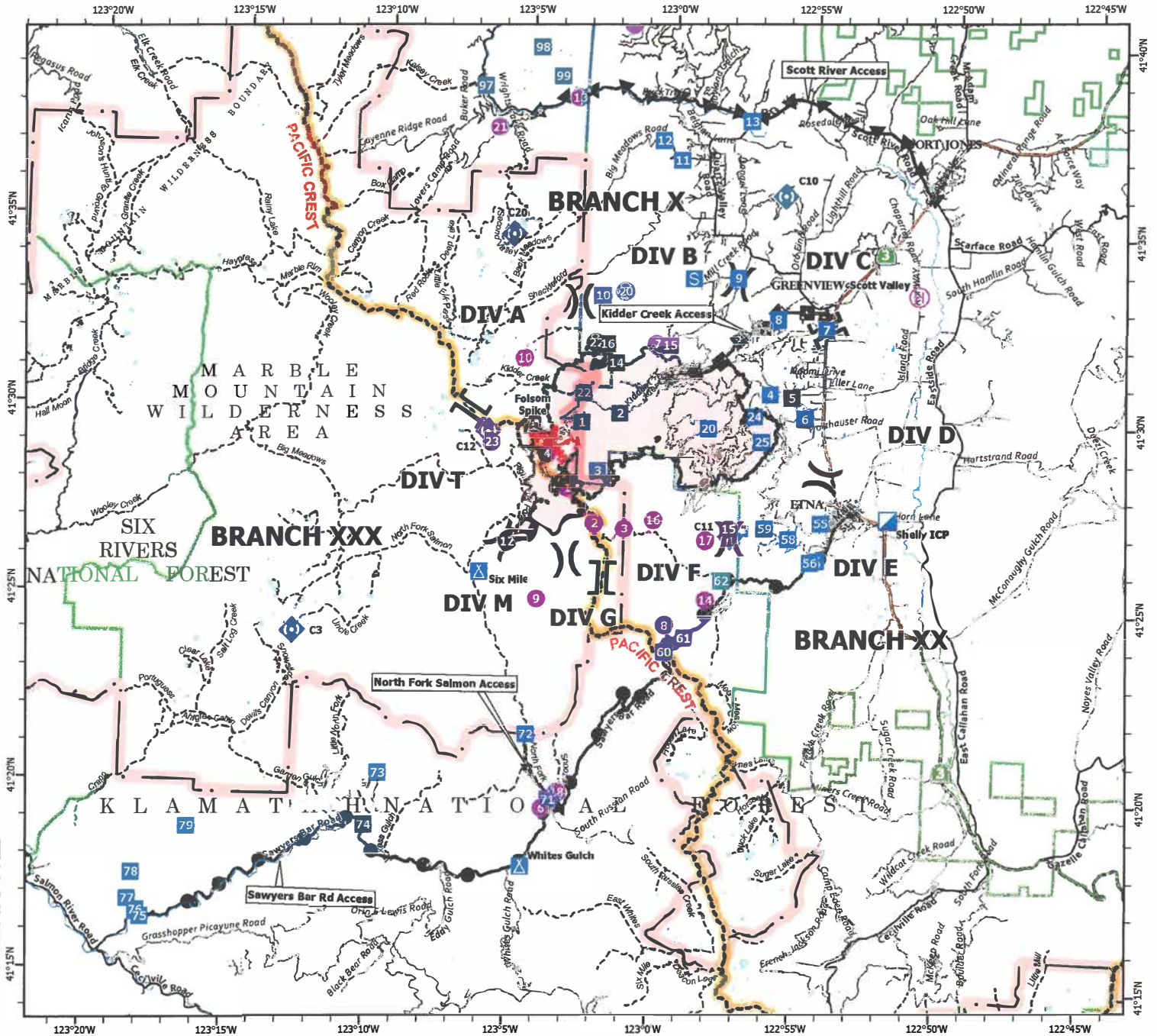


- Shelly Fire
- Contained Fire Edge
- Uncontained Fire Edge
- Branch Break
- Division Break
- Incident Command Post
- Drop Point
- Camp
- Staging Area
- ◆ Repeater
- ⊕ Helibase
- ⊙ Helispot
- Secondary Highway
- Major Road
- Minor Road
- Pacific Crest Trail
- Trails
- Wilderness
- Forest Boundary
- Transportation Routes**
- Kidder Creek Access
- North Fork Salmon Access
- Sawyers Bar Rd Access
- Scott River Access



0 1 2 3 4 5 Miles

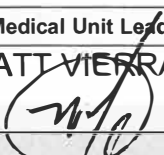
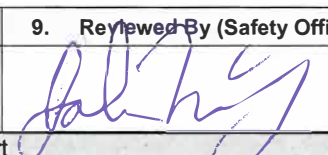
NAD83 California (Teale) Albers







# MEDICAL PLAN (ICS 206 WF) TEAM SHELLY

1. Incident Name			2. Operational Period				
<b>SHELLY INCIDENT CA-KNF-005159</b>			Date/Time: <b>07/27/2024 – 07/28/2024 0700-0700</b>				
<b>3. EMS / Ambulance Services/Aid Stations</b>							
Name	Location		Frequency/Phone		Advanced Life Support (ALS) Yes No		
MT. SHASTA AMBULANCE	YREKA, CA		DAY Shelly Communications 510 507-1514			X	
			NIGHT 911				
ETNA AMBULANCE	ETNA, CA		DAY Shelly Communications 510 507-1514		X		
			NIGHT 911				
MT. MEDICS Aid Station	ICP		530-859-2799		X		
<b>4. Air Rescue / Air Ambulance Services</b>							
Name	Phone		ETA over Incident	Type of Aircraft & Capability			
MERCY AIR	Yreka Interagency Command Center 530-841-4600		1 HR, 5MIN	AIR AMBULANCE, 24 HR ALS, NO HOIST			
PHI	Yreka Interagency Command Center 530-841-4600		45 MIN	AIR AMBULANCE, 24 HR ALS, NO HOIST			
REACH AIR	Yreka Interagency Command Center 530-841-4600		45 MIN	AIR AMBULANCE, 24 HR ALS, NO HOIST			
CHP	Yreka Interagency Command Center 530-841-4600		30 MIN	0600-0230, ALS, DAY HOIST ONLY, NO SHORT HAUL			
COAST GUARD	Yreka Interagency Command Center 530-841-4600		1 HR, 40 MIN	24 HR HOIST, BLS ONLY			
National Guard (G823)	Yreka Interagency Command Center 530-841-4600		45 MIN	24 HR HOIST, ALS			
<b>5. Hospitals (all times estimated from incident location)</b>							
Name & Level	GPS Datum – WGS 84 Degrees Decimal Minutes		Travel Time Air Gnd		Phone	Helipad Yes No	Address
UC DAVIS MEDICAL CENTER LEVEL 1 TRAUMA	Lat:	38°33.292'N	1.5hr	6hr	916-734-3790 ER Desk	X	2315 Stockton Blvd. Sacramento, CA 95817
	Long:	121°27.326'W					
MERCY MEDICAL CENTER Redding LEVEL 2 TRAUMA	Lat:	40°34.325'N	40m	3hr	530-225-7200 ER Desk	X	2175 Roseline Ave. Redding, CA 96001
	Long:	122°23.700'W					
ASANTE ROGUE REGIONALMEDICAL CENTER- LEVEL 2	Lat:	42°19.07'N	20m	2hr	541-789-7132 ER Desk	X	2825 E. Barnette Rd. Medford, OR 97504
	Lat:	122°49.90'W					
MERCY MEDICAL CENTER Mt. Shasta LEVEL 3 TRAUMA	Lat:	41°19.111'N	30m	2hr	530-926-9360 ER Desk	X	914 Pine St. Mt. Shasta. CA 96067
	Long:	122°19.200'W					
FAIRCHILD MEDICAL CENTER LEVEL 4 TRAUMA	Lat:	41°43.181'N	20m	1.5h	530-841-6292 ER Desk	X	444 Bruce St. Yreka, CA 96097
	Long:	122°38.757'W					
<b>6. Division / Crew Emergency Pre-Plan</b>							<i>Update and discuss with assigned resources daily.</i>
Fireline EMT / Medic's Division / Branch Location							
Air Hoist site location site: Lat: / Long: / Elevation:							
Helispot: Lat: / Long: / Elevation:							
<b>7. Prepared By (Medical Unit Leader)</b>			<b>8. Date/Time</b>		<b>9. Reviewed By (Safety Officer)</b>		<b>10. Date/Time</b>
MATT VIERRA MEDL 			07/26/2024 1800				07/26/2024 1800
Medical Incident Report							

# MEDICAL PLAN (ICS 206 WF) TEAM SHELLY

<p><b>FOR A NON-EMERGENCY INCIDENT, WORK THROUGH CHAIN OF COMMAND TO REPORT AND TRANSPORT INJURED PERSONNEL AS NECESSARY.</b></p> <p><b>FOR A MEDICAL EMERGENCY: IDENTIFY ON SCENE INCIDENT COMMANDER BY NAME AND POSITION AND ANNOUNCE "MEDICAL EMERGENCY" TO INITIATE RESPONSE FROM IMT COMMUNICATIONS/DISPATCH.</b></p>					
<p><b>Use the following items to communicate situation to communications/dispatch.</b></p>					
<p><b>1. CONTACT COMMUNICATIONS / DISPATCH</b> (Verify correct frequency prior to starting report)  <i>Ex: "Communications, Div. Alpha. Stand-by for Emergency Traffic."</i></p>					
<p><b>2. INCIDENT STATUS:</b> Provide incident summary (including number of patients) and command structure.  <i>Ex: "Communications, I have a Red priority patient, unconscious, struck by a falling tree. Requesting air ambulance to Forest Road 1 at (Lat./Long.) This will be the Trout Meadow Medical, IC is TFLD Jones. EMT Smith is providing medical care."</i></p>					
Severity of Emergency / Transport Priority	<input type="checkbox"/> <b>RED / PRIORITY 1 Life or limb threatening injury or illness. Evacuation need is IMMEDIATE</b> <i>Ex: Unconscious, difficulty breathing, bleeding severely, 2° – 3° burns more than 4 palm sizes, heat stroke, disoriented.</i> <input type="checkbox"/> <b>YELLOW / PRIORITY 2 Serious Injury or illness. Evacuation may be DELAYED if necessary.</b> <i>Ex: Significant trauma, unable to walk, 2° – 3° burns not more than 1-3 palm sizes.</i> <input type="checkbox"/> <b>GREEN / PRIORITY 3 Minor Injury or illness. Non-Emergency transport</b> <i>Ex: Sprains, strains, minor heat-related illness.</i>				
Nature of Injury or Illness & Mechanism of Injury			Brief Summary of Injury or Illness <i>(Ex: Unconscious, Struck by Falling Tree)</i>		
Transport Request			Air Ambulance / Short Haul/Hoist Ground Ambulance / Other		
Patient Location			Descriptive Location & Lat. / Long. (WGS84)		
Incident Name			Geographic Name + "Medical" <i>(Ex: Trout Meadow Medical)</i>		
On-Scene Incident Commander			Name of on-scene IC of Incident within an Incident <i>(Ex: TFLD Jones)</i>		
Patient Care			Name of Care Provider <i>(Ex: EMT Smith)</i>		
<p><b>3. INITIAL PATIENT ASSESSMENT:</b> Complete this section for each patient as applicable (start with the most severe patient)</p>					
Patient Assessment: See IRPG PAGE 106					
Treatment:					
<p><b>4. TRANSPORT PLAN:</b></p>					
Evacuation Location (if different): (Descriptive Location (drop point, intersection, etc.) or Lat. / Long.) Patient's ETA to Evacuation Location:					
Helispot / Extraction Site Size and Hazards:					
<p><b>5. ADDITIONAL RESOURCES / EQUIPMENT NEEDS:</b></p>					
<i>Example: Paramedic/EMT, Crews, Immobilization Devices, AED, Oxygen, Trauma Bag, IV/Fluid(s), Splints, Rope rescue, Wheeled litter, HAZMAT, Extrication :</i>					
<p><b>6. COMMUNICATIONS: Identify State Air/Ground EMS Frequencies and Hospital Contacts as applicable</b></p>					
Function	Channel Name/Number	Receive (RX)	Tone/NAC *	Transmit (TX)	Tone/NAC *
COMMAND					
AIR-TO-GRND					
TACTICAL					
<p><b>7. CONTINGENCY: Considerations:</b> If primary options fail, what actions can be implemented in conjunction with primary evacuation method? Be thinking ahead. .</p>					
<p><b>8. ADDITIONAL INFORMATION:</b> Updates/Changes, etc. .</p>					
<p><b>REMEMBER:</b> Confirm ETA's of resources ordered. Act according to your level of training. Be Alert. Keep Calm. Think Clearly. Act Decisively. .</p>					