

INCIDENT ACTION PLAN

GOLD COMPLEX

CA-PNF-000836

P5R4DA (0511)



OPERATIONAL PERIOD

7/31/24 0700

to

8/2/2024 1900



Wednesday - Friday
Thursday UPDATE

INCIDENT OBJECTIVES (ICS 202)

1. Incident Name: <p style="text-align: center;">Gold Complex</p>	2. Operational Period:	Date From: 7/31/2024 Time From: 0700	Date To: 8/2/2024 Time To: 1900
---	-------------------------------	---	------------------------------------

3. Objective(s):

Management Objectives

- **Firefighter and Public Safety**
 - Utilize the risk management process to identify and mitigate hazards to protect firefighters and the public.
 - Limit potential impacts to critical values at risk
- **Communications**
 - Utilize all communication tools to facilitate information sharing with the local communities and affected public.
 - Provide timely and continuous information to affected Agency partners, cooperators and to the public.
 - Coordinate fire suppression efforts in cooperation with Resource Advisors assuring we are meeting the forest suppression repair standards.
- **Suppression Repair**
 - Protect land and trust resources of the public and private lands where suppression activities have taken place.
- **Fiscal Responsibility**
 - Maintain fiscal accountability and keep costs commensurate with the values at risk

Control Objectives

Mill Fire

- Keep fire within current containment lines

Smith Fire

- Keep fire within current containment lines

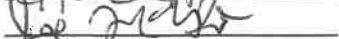
5. Site Safety Plan Required? Yes No

Approved Site Safety Plan(s) Located at:

6. Incident Action Plan

<input checked="" type="checkbox"/> ICS 203	<input checked="" type="checkbox"/> ICS 215A	<input type="checkbox"/> ICS 205 A	<input type="checkbox"/> Field Map Instructions (QR)
<input checked="" type="checkbox"/> ICS 204	<input type="checkbox"/> ICS 220	<input type="checkbox"/> Training Message (QR)	<input type="checkbox"/> HRSP (QR)
<input checked="" type="checkbox"/> ICS 205	<input checked="" type="checkbox"/> Facility Maps	<input type="checkbox"/> Travel Map (QR)	<input type="checkbox"/> Recycling Message
<input checked="" type="checkbox"/> ICS 206	<input checked="" type="checkbox"/> Weather Forecast	<input type="checkbox"/> Demob Plan	<input type="checkbox"/> PIO Message
<input type="checkbox"/> ICS 208	<input checked="" type="checkbox"/> Fire Behavior	<input checked="" type="checkbox"/> Finance Message	<input checked="" type="checkbox"/> ICS 214

7. Prepared By: Position/Title: PSC Kelly Mosinski, Hannah Hepner (t) Signature: 

8. Approved by Incident Commander: Don Fregulia, Joe McGinn (t) Signature: 

ORGANIZATION ASSIGNMENT LIST (ICS 203)

1. Incident Name: Gold Complex		2. Operational Period: Date From: 7/31/2024 Time From: 0700		Date To: 8/2/2024 Time To: 1900	
3. Incident Commander(s) and Command Staff:			7. Operation Section:		
IC/UC's	Don Fregulia, Joe McGinn (t)	Operations	Nolan Bussey		
Safety Officer	Chris Baker	Planning Ops	Edward Badalamenti		
Information Officer	Tamara Schmidt				
4. Agency/Organization Representatives:		Branch			
Agency/Organization	Name	Division/Group	A/W	Lucas Pascucci, Casey Hoffman(t)	
AA USFS - PNF	Chris Carlton	Division/Group	D/H	Jack Sevelson	
AA USFS - TNF	Rachel Hutchinson	Division/Group	T	Jason Miller	
Cal Fire	Joe Walton	Division/Group			
Cal OES	Eric Petterson	Division/Group			
City of Portola	Susan Scarlett	Branch			
PCSO	Mike Grant	Division/Group	Suppression Repair	Chris Voelker	
CHP	Read Mason	Division/Group			
READ	Seth Brown	Division/Group			
		Division/Group			
		Branch			
		Division/Group			
		Division/Group			
		Division/Group			
		Division/Group			
5. Planning Section:		Branch			
Chief	Kelly Mosinski, Hannah Hepner (t)	Division/Group			
GISS	Seth Brown, Dory Shreve	Division/Group			
IMET	Eric Kurth	Division/Group			
Documentation (virtual)	Joey Kosiorowski, Shannon Graham	Division/Group			
		Division/Group			
		Division/Group			
		Air Operations Branch Director:			
6. Logistics Section		8. Finance/Administration Section:			
Chief	Alvin Kingsley, Emily Young (t)	Chief	Beth Lopez, Alexandra Ziegler (t)		
Supply Unit	Tina Weaver	Time Unit			
Receiving Manager	Bill Lower 218-224-9763	Equipment Time			
Facilities Unit		Personnel Time			
Ground Support Unit		Comp/Claims Unit	Tina Weaver		
Communications Unit	Tina Weaver	Cost Unit			
Medical Unit					
Food Unit					
Prepared By: Name: Position/Title: PSC Kelly Mosinski, Hannah Hepner (t)		Signature: _____			
ICS 203		Date/Time: 7/30/2024 2300 hours		NIMS IAP	



Incident Weather Forecast

FORECAST NO: 7
PREDICTION FOR SHIFT DATE: 8/1/24
FORECAST ISSUED: 1800 7/31/24

NAME OF FIRE: Gold Complex
UNIT: CIIMT Team 10
SIGNED: *Eric C Kurth*
Incident Meteorologist: Eric Kurth
Contact: (916)915-3761 <eric.kurth@noaa.gov>

...Thunderstorms Friday Night into Saturday...

WEATHER DISCUSSION:

Hot and dry weather continues today. It will be mostly sunny with lingering haze and smoke from the Park Fire. Temperatures start in the low 50s, then rise into the upper 80s to lower 90s. Winds will be light in the morning, with typical southwest winds developing in the afternoon, gusting to 15 mph over ridges. Humidity levels will start at 65-75% in the morning, falling to around 17% in the afternoon. Hot weather continues on Friday, with unstable conditions developing. Showers and isolated thunderstorms are possible Friday late afternoon and into the night.

WEATHER FORECAST FOR TODAY:

WEATHER: Mostly sunny, with widespread smoke/haze in the morning
CHANCE OF WETTING RAIN: 0%

20 FT WINDS: Southeast 2-4 mph early morning, then west southwest 3-6 MPH late morning, afternoon west 4-8 MPH with gusts to 15 MPH over ridges.

EYE LEVEL WINDS: Southeast 1-2 MPH in the morning, then in the afternoon southwest 3-5 MPH. Gusts to 10 MPH.

TEMPERATURES: 88 - 92 degrees

HUMIDITY: 16 - 19%

STABILITY/INVERSION: Inversion will break around 1030 am, with mixing heights rising to 9500 FT AGL

THURSDAY NIGHT

WEATHER: Mostly clear with smoke/haze

CHANCE OF WETTING RAIN: 0%

20 FT WINDS: Southwest 5-10 MPH with gusts to 15 MPH in the evening, then southeast 1-3 mph overnight.

EYE LEVEL WINDS: Southwest 3-6 MPH with gusts to 8 mph in the evening, then downslope 1-2 overnight.

TEMPERATURES: 43-48 degrees

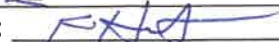
HUMIDITY: 60 - 70%

STABILITY/INVERSION: Inversion develops after midnight. RH recovery is around 65%.

OUTLOOK FOR FRIDAY:

Partly cloudy and continued hot Friday with high temperatures in the upper 80s to low 90s. Afternoon winds southwest 4 to 7 mph with gusts to 12 mph. Afternoon humidity 15-20%. Increasing clouds Friday with the potential for showers and isolated thunderstorms afternoon into night, with better chances of thunderstorms on Saturday.

FIRE BEHAVIOR OUTLOOK

FIRE NAME: GOLD COMPLEX	OUTLOOK PERIOD (valid time period): 7/31-8/2
DATE ISSUED: 7/30/24	TIME ISSUED: 1900
UNIT: PNF	SIGNED:  R.Henault, FBAN

WEATHER/CLIMATOLOGY DISCUSSION : Sunny, warm and dry. High pressure will be moving in over the area. Predominantly light southwesterly ridge top winds. Terrain driven winds will be the rule.

FUELS: After a week of moderated weather conditions, fuels will be returning/remaining in critical values. 1000 hr fuels are well below average at 9% ,

FIRE BEHAVIOR DISCUSSION (Peak Burn Period Extremes):

Fuel model		Max. Flame Length	Max. Rate of Spread	Spotting	Probability of Ignition
Grass	GR 2	< 7'	Up to 74 ch/hr	1/4 mile	70-90%
Moderate loas grass-shrub	GS2	<7'	Up to 32 ch/hr	1/4 mile	70-90%
Timber Long needle litter	TL8	<5'	Up to 13 ch/hr	1/4 mile	70-90%
High load timber shrub	TU5	< 9'	Up to 10 ch/hr	1/4 mile	70-90%

20'wind of 12 mph, 35% slope, max temp/min RH values used for calculation.

Short Range (Today, Tomorrow) and Medium Range (3-7 Days):

Moderate probability for large fire development with possible thunderstorm activity. Increasing ERCs (>90th%) with light to moderate winds and excessively dry fuels for this time of season. Fires are predominately fuels and topography dominated. Fire size may exceed initial attack capabilities in the first operational period; especially with wind and slope alignment. Tactical priorities should focus on direct attack at the heel and working the flanks. Holding the fire to the ridgelines may be challenging without sufficient air support. Spotting will be prevalent and may be up to 1/4 mile. Fuels are cured and will support larger fire growth and containment challenges.

BI is trending on average at the 95th percentile. Mid-Flame wind speed greater than 6 mph will transition surface fire into the canopy.

Smoke Concerns: n/a

Reassessment Criteria: Changing weather and conditions past the August 2 expiration date of this forecast.

SAFETY

Expect fire activity with high resistance to control- fuels will ignite easier, spread faster and have increased spread rates. You may need to adjust normal strategies and tactics!!

ASSIGNMENT LIST (ICS 204 WF)

CONTROLLED UNCLASSIFIED
INFORMATION//BASIC

1. Incident Name: <p style="text-align: center;">Gold Complex</p>	2. Operational Period: Date From: 07/31/24 Date To: 08/02/24 Time From: 0700 Time To: 1900	3. Branch Division <p style="text-align: center;">A/W</p>
--	---	---

4. Operations Personnel:		Page 1 of 1 Alpha/Whiskey
Operations Section Chief: Nolan Bussey	Night Ops:	
Branch Director:	Branch Safety:	
Division/Group Supervisor: Lucas Pascucci, Casey Hoffman(t)	Air Attack:	

5. Resources Assigned:						12 Hour Resource are in BOLD	
Resource Identifier	ALS	LWD	Leader	Personnel	Request #	Hours	Reporting Location
HC2 ROCHA 32		8/11	BENJAMIN DIAZ	20	C-32	0700-1900	Mohawk Ranger Stn.
MOD PNF CREW*		8/4	TRANZINNY NUNEZ	10	O-224	0700-1900	Mohawk Ranger Stn.
ENG3 LEFTHAND FPD 4104		8/5	RAMESH JONES	4	E-8	0700-1900	Mohawk Ranger Stn.
ENG3 SRF E341*		8/5	JASON BENTON	5	E-41	0700-1900	Mohawk Ranger Stn.
ENG5 STONE MOUNTAIN		8/9	CAMERON PETERSON	3	E-72	0700-1900	Mohawk Ranger Stn.
ENG5 STONE MOUNTAIN 73		8/9	HEATHER HERDT	3	E-73	0700-1900	Mohawk Ranger Stn.
WTS2 GRAEAGLE*			CODY WARD	2	E-56	0700-1900	Mohawk Ranger Stn.
FEMT PILLSWORTH		8/4	BRIAN PILLSWORTH	1	O-195	0700-1900	Mohawk Ranger Stn.
READ MEAGHER			MARY MEAGHER	1	O-92	0700-1900	Mohawk Ranger Stn.
READ BAUER			RACHEL BAUER	1	O-99	0700-1900	Mohawk Ranger Stn.

6. Work Assignments:
 Keep fire within current containment lines
 Mop up only to the extent necessary to minimize the likelihood of an escape
 Back haul all trash and excess equipment

7. Special Instructions:
 *Resource available for IA
 SOFR Chris Baker is available to ALL Divisions
 AMB2 WILDERNESS 1 is available to All Divisions
 FEMP Lopez and FEMT Pillsworth are available to ALL Divisions
 READ Bauer will be working in Div A/W & Div T
 READ Meagher will be working in Div A/W & Div D/H

8. Communications								
Name	Ch	Function	Rx Freq	Rx Tone	Tx Freq	Tx Tone	Mode	Notes
PNF FIRE	1	COMMAND	170.5500	0.0	164.8750	OST	A	(T4) Mills Pk, (T7) Dixie
NIFC_T1	3	TACTICAL	168.0500	(T2) 123.0	168.0500	(T2) 123.0	A	
AG-14	13	A/G	167.5000	0.0	167.5000	0.0	A	
AG-59	14	A/G	169.1125	0.0	169.1125	0.0	A	
CALCORD	15	MEDICAL	156.0750	(T6) 156.7	156.0750	(T6) 156.7	A	
AIRGUARD	16	AIRGUARD	168.6250	0.0	168.6250	(T1) 110.9	A	

9. Prepared by: Name: Kelly Mosinski, Hannah Hepner (t) PSC3
 Signature: _____
ICS 204 Date/Time: 7/30/2024 2200 Personnel Count: 47

SAFETY MESSAGE

Ask yourself "What Can Go Wrong"

- *Today is an IMT transition day.* Expect new overhead on the fire. Pass on Situational Awareness gained from previous operational periods.
- *There is a new communications plan.* Know that plan and check your equipment.
- Identify the critical elements of your plan, and ask "what if" a loss of one of these elements occurs.
- Develop a plan to deal with the problem before it occurs.
- Communicate the plan to all your personnel.
- Validate the new plan to ensure it matches the current situation.

MAJOR HAZARDS AND RISKS

Heavy Equipment Transition Fatigue	Driving Steep Terrain Dehydration	Hazard Trees Complacency Stump holes
--	---	--

Be sure all elements of your safety plan are in place prior to engagement

Risk Management

- Keep risks commensurate with the benefit.
- Utilize the *Risk Management Process* on IRPG page 1.
- Recognize that no injury is worth the ground you are working.
- **Everyone is entitled to a round-trip ticket.** Bring them home healthy.

Planning for Medical Emergencies

Ask and be able to answer these (3) questions:

1. What are we going to do if someone gets hurt?
2. How will we get them out of here?
3. How long will it take to get them to a hospital?

All operational activities should be based on answers to these questions. See page 2 of the IRPG for more information.



INCIDENT RISK ANALYSIS (ICS 215a)

Incident Name: Gold Complex		Operational Period: Date From: 7/31/24 Date To: 8/2/24 Day Shift
	HAZARDOUS ACTIONS / CONDITIONS	MITIGATIONS / WARNINGS / REMEDIES
ALL	COMMUNICATIONS	<ul style="list-style-type: none"> Share your Situational Awareness (hazards, changes, etc.) to those who also have a need. Answer questions when asked by others. Ask for intel when you don't know the plan. New communications plan in place. Ensure all personnel are familiar with the incident and IA communications plans.
ALL	DRIVING HAZARDS	<ul style="list-style-type: none"> Drive defensively! Expect the unexpected around every curve. Increased public along roads. Highway 89 and A15 road. Drive with headlights on; use chock blocks, keep windshields clean; look before backing; and use backers whenever available. Don't drive when fatigued. Adhere to agency driving regulations and guidelines. Be alert for wildlife, heavy trucks, & high-speed opposing and over-taking traffic. Increase following distances on dusty roads. Slow down when you meet opposing traffic or encounter washboard surfaces. Ensure drivers are alert for long drives out of area for lodging after shift.
ALL	FATIGUE/COMPLACENCY	<ul style="list-style-type: none"> Be alert for signs of fatigue and take breaks as necessary. Repeated assignments in the same area can lead to complacency. A feeling of being satisfied with your safety may be a sign of complacency.
ALL	MOP UP	<ul style="list-style-type: none"> Conduct thorough briefing for all personnel (inside rear cover IRPG). Use all required PPE, including eye protection. When looking at interior smokes determine if it makes tactical sense to send firefighters in.
ALL	HAZARD TREES	<ul style="list-style-type: none"> Follow Hazard Tree Safety Guidelines (IRPG p. 20). Limit the number of personnel around snags and their exposure time; fallers must be qualified for trees being fallen. Be especially alert around snags during wind events or changing wind direction. Check for hazard trees & "widow-makers" in sleeping areas prior to using.
ALL	FIRE BEHAVIOR	<ul style="list-style-type: none"> Be aware of increasing temperatures, lowering RH, and possible dry lightning starts later this week. Make sure all personnel receive thorough briefings every shift. Establish and maintain LCES. Take weather obs. Be aware of the ERC over the 97 percentiles. Watch for spot fires. Allow for adequate time to escape routes and safety zone.
ALL	HEAT RELATED ILLNESS (HRI) / DEHYDRATION	<ul style="list-style-type: none"> Drink 2: 1 water to sports drinks. Maintain 2:1 work rest ratio Recognize symptoms of HEAT RELATED ILLNESS (IRPG PG.110)
ALL	NON-FIRE PERSONNEL IN AREA	<ul style="list-style-type: none"> Educate and advise public of fire area closure. Use chain of command to request Law Enforcement if needed
ALL	HEAVY EQUIPMENT/DOZERS	<ul style="list-style-type: none"> Utilize appropriate PPE and other equipment safety mechanisms. Maintain safe working distances. Utilize observer or spotter. Ensure the use of effective communication (radio, hand signals). Identify hazards. Avoid moving parts
Prepared By: Chris Baker (CA-PEF) - SOFR		Date / Time Prepared: 7/30/24

ICS 205 - INCIDENT RADIO COMMUNICATIONS PLAN

CONTROLLED UNCLASSIFIED
INFORMATION//BASIC

1. Incident Name: Gold Complex		2. Date/Time Prepared Date: 07/30/2024 Time: 1930		3. Operational Period: Date From: 07/31/24 Time From: 0700 Date To: 08/02/24 Time To: 1900					
4. Communications									
Ch#	Function	Name	Assigned To	Rx Freq	Rx Tone	Tx Freq	Tx Tone	Mode	Notes
1	COMMAND	PNF FIRE	All Divs	170.5500	0.0	164.8750	OST	A	(T4) Mills Pk, (T7) Dixie Mt
2	DISPATCH	PNF ADMN	I/A	171.4250	0.0	163.1625	OST	A	(T4) Mills Pk, (T7) Dixie Mt
3	TACTICAL	NIFC_T1	Div A/W	168.0500	(T2) 123.0	168.0500	(T2) 123.0	A	
4	TACTICAL	NIFC T2	Div D/H	168.2000	(T2) 123.0	168.2000	(T2) 123.0	A	
5	TACTICAL	NIFC_T3	Div T	168.6000	(T2) 123.0	168.6000	(T2) 123.0	A	
6	TACTICAL	NIFC T4	Repair	166.7250	(T2) 123.0	166.7250	(T2) 123.0	A	
7	TACTICAL	R5 T7	I/A	167.9625	0.0	167.9625	0.0	A	
8	DISPATCH	BLMCCD	I/A	169.8750	0.0	162.2375	OST	A	
9	DISPATCH	TNF FIRE	I/A	170.6000	0.0	164.9375	OST	A	(T6) Babbitt, (T1) Mt Rose
10	DISPATCH	TNF FOREST	I/A	169.9000	0.0	168.7750	OST	A	(T6) Babbitt, (T1) Mt Rose
11	DISPATCH	Sierra CO	I/A	154.3850	0.0	153.8900	OST	A	
12	DISPATCH	PLUCORPT	I/A	155.0850	0.0	158.9550	(T5) 146.2	A	XPU Fire (Mills)
13	A/G	AG-14	I/A	167.5000	0.0	167.5000	0.0	A	
14	A/G	AG-59	I/A	169.1125	0.0	169.1125	0.0	A	
15	MEDICAL	CALCORD	Medical	156.0750	(T6) 156.7	156.0750	(T6) 156.7	A	MEDICAL
16	AIRGUARD	AIRGUARD	All Divs	168.6250	0.0	168.6250	(T1) 110.9	A	EMERGENCY ONLY
17									
18									
19									
20	AIRGUARD	AIRGUARD	All Divs	168.6250	0.0	168.6250	(T1) 110.9	A	EMERGENCY ONLY
5. Special Instructions									
Current Clone: GOLD0731				"Plumas Dispatch": EMERGENCY 911 Non-Emergency (530) 283-7761					
6. Prepared by (Communications Unit Leader): Name: Brad Mitchell(530)941-9111							Signature: _____		
ICS 205 - CONTROLLED UNCLASSIFIED INFORMATION//BASIC				<small>NIMS IAP</small>	Date/Time: 07/30/24		1930		

1. Incident Name: Gold Complex		2. Operational Period: Date From: 7/31/24 Date To: 8/2/24 Time From: 0700 Time To: 1900					
3. EMS / Ambulance Services:							
Name	Location	Contact Number/Freq	Paramedics				
Wilderness Medics AMBO2	Available to all Divisions	Command	<input checked="" type="checkbox"/> Yes				
4. Air Rescue / Air Ambulance Services:							
Name	Phone / Frequency	Type of Aircraft & Capability					
Care Flight	Command	24hr			ALS		
CHP H14	Command	Day Hoist			ALS		
Raven 7	Command	Day Hoist			BLS		
5. Hospitals: **Travel Times are based on the ICP location**							
Hospital Name	Address	Contact Number(s)	Travel Time		Trauma Center	Burn Center	Helipad
	Lat & Long Helipad	Frequency	Air	Ground			
Eastern Plumas Health Care	500 1st Ave, Portola, CA	530-832-6500	5 Min	20 Min		<input type="checkbox"/>	<input type="checkbox"/>
Renown	1155 Mill St, Reno, NV	775-982-2055	20 Min	70 Min	Level 2	<input type="checkbox"/>	<input checked="" type="checkbox"/>
	N 39 31' 34" x W 119 47' 45"						
U.C. Davis Medical Center	2315 Stockton Blvd, Sacramento CA	ER 916-734-3790 Burn 916-734-3636	60 Min.	3.5 Hr	Level 1	<input checked="" type="checkbox"/>	<input checked="" type="checkbox"/>
	N 38 33' 29" x W 121 27' 32"						
						<input type="checkbox"/>	<input type="checkbox"/>
6. Special Medical Emergency Procedures <i>Update and discuss with assigned resources daily</i>							
Fireline EMT / Medic's Division / Branch Location	To be assigned, confirm with Division or Communications.						
Air Hoist site location site: Lat / Long / Elevation:							
Helispot: Lat / Long / Elevation:							
<input type="checkbox"/> Check box if aviation assets are utilized for rescue. If assets are used, coordinate with Air Operations.							
7. Aid Stations							
	Point of Contact:						
	Equipment Available on site:						
	Ambulance ETA:	Air		Ground			
8. Prepared by (Medical Unit Leader):	Chris Baker (916) 709-1100	Signature: 					
9. Approved by (Safety Officer):	Chris Baker	Signature: 					
ICS 206	Date/Time:		07/30/2024	2200			

FINANCE MESSAGE

Finance Email: 2024.goldcomplex.finance@firenet.gov

Resource Order Numbers – On your shift tickets and/or CTRs, document the fire name and order number you were originally ordered for (Gold Complex, Mill or Smith).

IMPORTANT: If you have been **reassigned** from Mill or Smith to the Gold Complex, please use Gold Complex request number on your shift ticket and/or CTR.

CTR's, Shift Tickets and supporting documents may be mailed to the email address above. If you are unable to send documents electronically you can drop off paper copies to Finance. Please submit documents either electronic **OR** hard copy. Do not submit duplicates. **Approving Officials** for CTRs & Shift Tickets please write legibly and print your name under your signature.

Contract equipment please note your resource order number on the top right of the shift ticket and note any down time in the remarks block. Make sure to record mileage for transports.

Contract crews – Crew Boss time starts at briefing. Contract crew member times start ½ hour later. Meal breaks need to be shown and time stops at arrival back at ICP or spike camp.

All Local Government employees MUST have a MARS account to complete and submit their F-42's for reimbursement.

Water Logs need to be filled out when pulling water from the water sources.

Logistics Message:

0700-1900 Weed Wash and Fuel

Lunches available through Sunday

Pick up will be at briefing

Gold Ordering Type 3

All requests must be on a 213

Al Kingsley

alordering2024@gmail.com

520-604-0463

**Start your incident replacement early to have it
completed prior to demob**

Comp/Claims

Tina Weaver

christina.weaver@usda.gov

530-375-0559

Hotels in the Area

Quincy

Lariat – 530-283-1000

Ranchito - 530-283-2265

Graeagle

Nakoma Lodge – 1-877-462-5662

Reno

La Quinta – 775-348-6100

Holiday Inn Express – 775-358-6900

Comfort Inn & Suites – 775-682-4444

Hilton Gardens – 775-850-9700

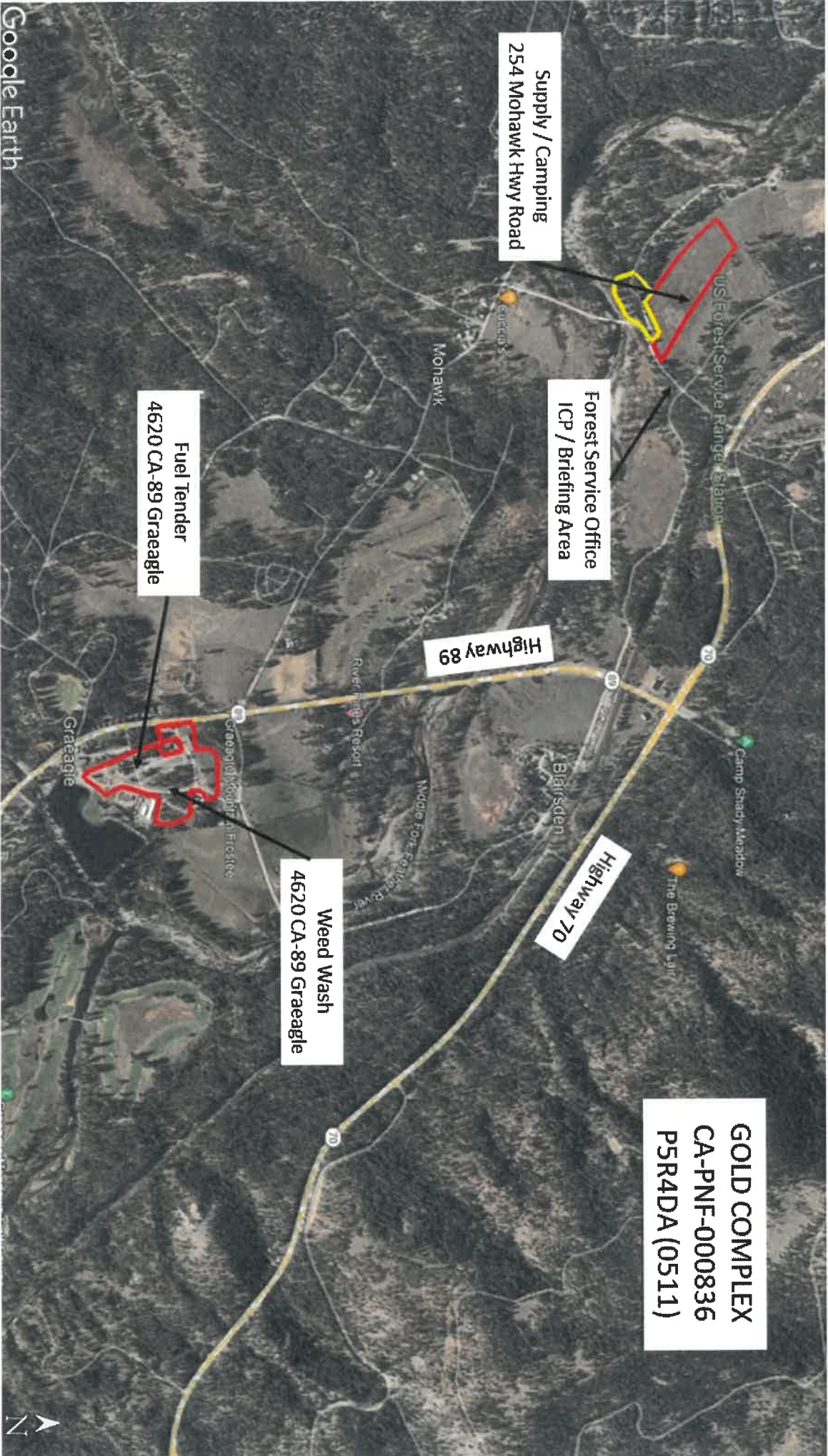
**GOLD COMPLEX
CA-PNF-000836
PSR4DA (0511)**

**Supply / Camping
254 Mohawk Hwy Road**

**Forest Service Office
ICP / Briefing Area**

**Fuel Tender
4620 CA-89 Graeagle**

**Weed Wash
4620 CA-89 Graeagle**



MEDICAL PLAN (ICS 206 WF)

Controlled Unclassified Information//Basic

Medical Incident Report

FOR A NON-EMERGENCY INCIDENT, WORK THROUGH CHAIN OF COMMAND TO REPORT AND TRANSPORT INJURED PERSONNEL AS NECESSARY.

FOR A MEDICAL EMERGENCY: IDENTIFY ON SCENE INCIDENT COMMANDER BY NAME AND POSITION AND ANNOUNCE "MEDICAL EMERGENCY" TO INITIATE RESPONSE FROM IMT COMMUNICATIONS/DISPATCH.

Use the following items to communicate situation to communications/dispatch.

1. CONTACT COMMUNICATIONS / DISPATCH (Verify correct frequency prior to starting report)

Ex: "Communications, Div. Alpha. Stand-by for Emergency Traffic."

2. INCIDENT STATUS: Provide incident summary (including number of patients) and command structure.

Ex: "Communications, I have a Red priority patient, unconscious, struck by a falling tree. Requesting air ambulance to Forest Road 1 at (Lat./Long.) This will be the Trout Meadow Medical, IC is TFLD Jones. EMT Smith is providing medical care."

Severity of Emergency / Transport Priority	<input type="checkbox"/> RED / PRIORITY 1 Life or limb threatening injury or illness. Evacuation need is IMMEDIATE <i>Ex: Unconscious, difficulty breathing, bleeding severely, 2° – 3° burns more than 4 palm sizes, heat stroke, disoriented.</i> <input type="checkbox"/> YELLOW / PRIORITY 2 Serious Injury or illness. Evacuation may be DELAYED if necessary. <i>Ex: Significant trauma, unable to walk, 2° – 3° burns not more than 1-3 palm sizes.</i> <input type="checkbox"/> GREEN / PRIORITY 3 Minor Injury or illness. Non-Emergency transport <i>Ex: Sprains, strains, minor heat-related illness.</i>	
Nature of Injury or Illness & Mechanism of Injury		<i>Brief Summary of Injury or Illness (Ex: Unconscious, Struck by Falling Tree)</i>
Transport Request		<i>Air Ambulance / Short Haul/Hoist Ground Ambulance / Other</i>
Patient Location		<i>Descriptive Location & Lat. / Long. (WGS84)</i>
Incident Name		<i>Geographic Name + "Medical" (Ex: Trout Meadow Medical)</i>
On-Scene Incident Commander		<i>Name of on-scene IC of Incident within an Incident (Ex: TFLD Jones)</i>
Patient Care		<i>Name of Care Provider (Ex: EMT Smith)</i>

3. INITIAL PATIENT ASSESSMENT: Complete this section for each patient as applicable (start with the most severe patient)

Patient Assessment: See IRPG page 106

Treatment:

4. TRANSPORT PLAN:

Evacuation Location (if different): (Descriptive Location (drop point, intersection, etc.) or Lat. / Long.) Patient's ETA to Evacuation Location:

Helispot / Extraction Site Size and Hazards:

5. ADDITIONAL RESOURCES / EQUIPMENT NEEDS:

Example: Paramedic/EMT, Crews, Immobilization Devices, AED, Oxygen, Trauma Bag, IV/Fluid(s), Splints, Rope rescue, Wheeled litter, HAZMAT, Extrication

6. COMMUNICATIONS: Identify State Air/Ground EMS Frequencies and Hospital Contacts as applicable

Function	Channel Name/Number	Receive (RX)	Tone/NAC *	Transmit (TX)	Tone/NAC *
COMMAND					
AIR-TO-GRND					
TACTICAL					

7. CONTINGENCY: Considerations: If primary options fail, what actions can be implemented in conjunction with primary evacuation method? Be thinking ahead.

8. ADDITIONAL INFORMATION: Updates/Changes, etc.

REMEMBER: Confirm ETA's of resources ordered. Act according to your level of training. Be Alert. Keep Calm. Think Clearly. Act Decisively.