

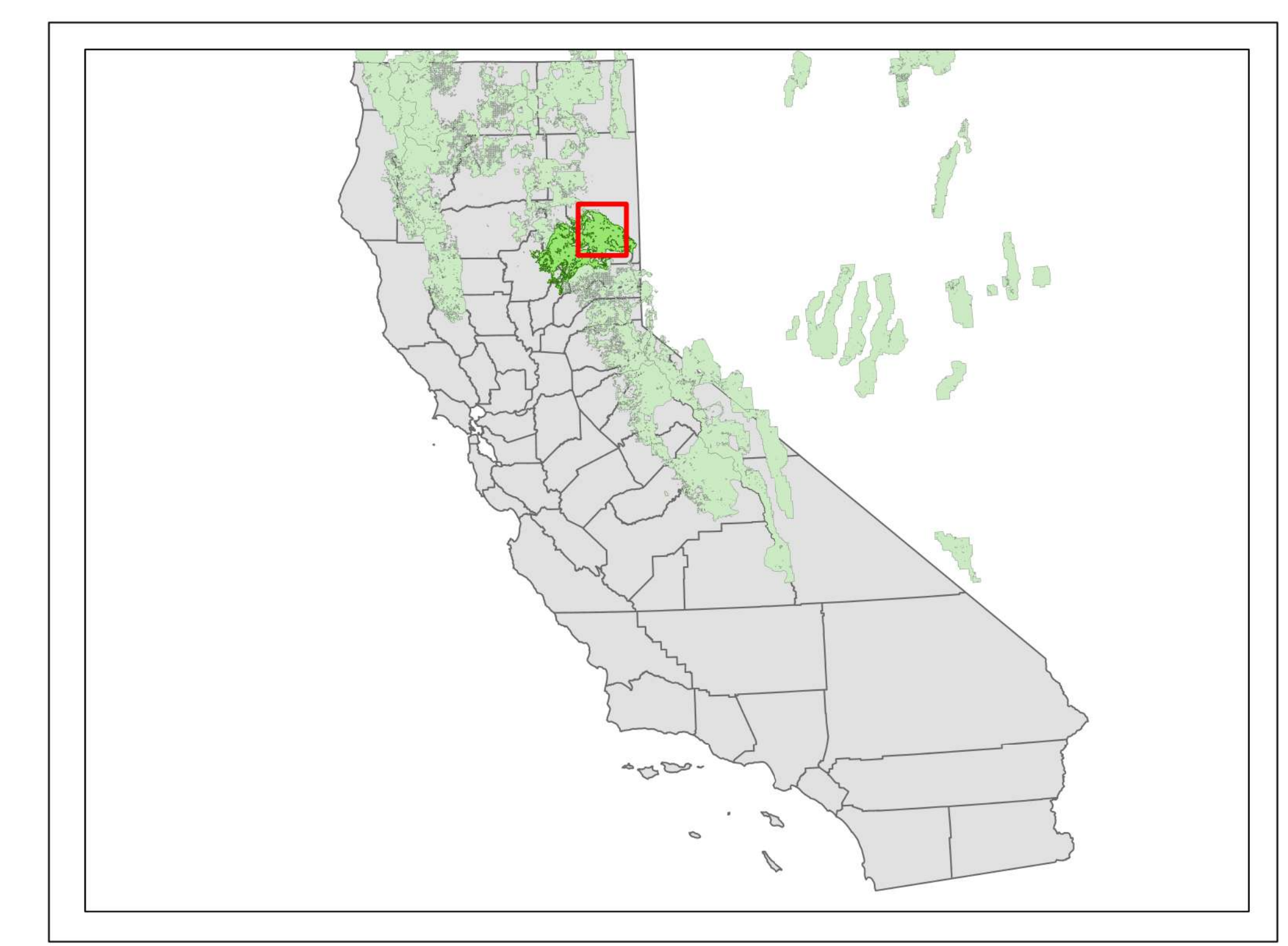
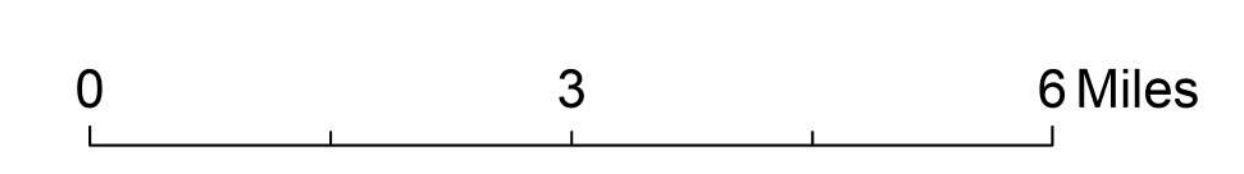
Unauthorized Group Use Incident



Plumas National Forest
Beckworth & Mt. Hough Ranger Districts

Unauthorized Group Use Incident Location Briefing Map

- | | | |
|-------------------|-----------------------------|----------------------------------|
| Cities | County Road | Administrative FS Boundary |
| Campground | Major Roads | County Boundary |
| Group Campground | Forest Service ML 3-5 Roads | Lakes |
| Trailhead | Forest Service ML 2 Roads | Wetlands |
| Picnic Site | Stream/River | Plumas National Forest Ownership |
| Boating Site | Stream/River Intermittent | Lassen National Forest Ownership |
| Interpretive Site | | Gathering Footprint |
| Snowpark | | |
| U.S. Highway | | |
| State Highway | | |



The USDA Forest Service makes no warranty, expressed or implied, including the warranties of merchantability and fitness for a particular purpose, nor assumes any legal liability or responsibility for the accuracy, reliability, completeness or utility of these geospatial data, or for the improper or incorrect use of these geospatial data. These geospatial data and related maps or graphics are not legal documents and are not intended to be used as such. The data and maps may not be used to determine title, ownership, legal descriptions or boundaries, legal jurisdiction, or restrictions that may be in place on either public or private land. Natural hazards may or may not be depicted on the data and maps, and users should exercise due caution. The data are dynamic and may change over time. The user is responsible to verify the limitations of the geospatial data and to use the data accordingly.

