

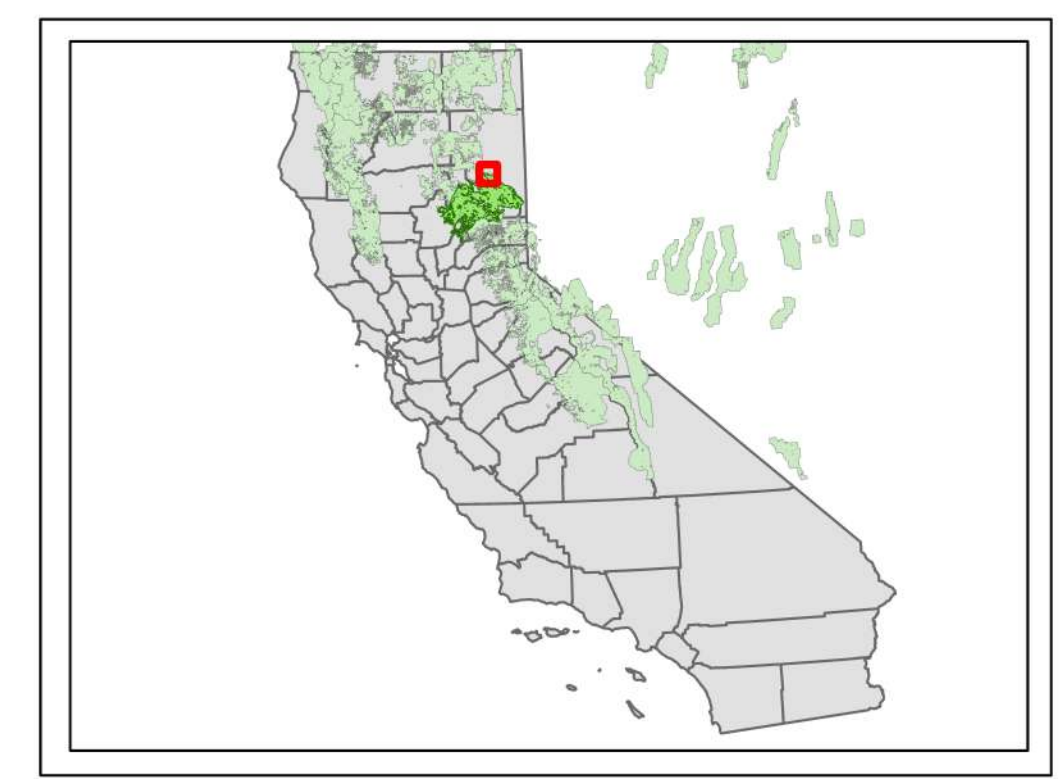
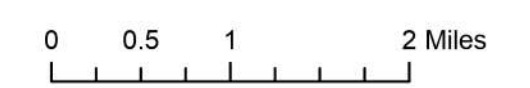
Unauthorized Group Use Incident



Plumas National Forest
Mt. Hough Ranger District

General Location Map
T. 28 N., R. 11 E., S. 12, 13, & 14
T. 28 N., R. 12 E., S. 7 & 18

- Cities
- 🗺 Lookout Towers
- 🏠 Supervisor's Office
- 🏢 Ranger District Office
- 🏕 Campground
- 🏕 Group Campground
- 🏖 Picnic Site
- 🚤 Boating Site
- 📖 Interpretive Site
- 🛣 U.S. Highway
- 🛣 State Highway
- 🛣 County Road
- 🛣 Major Roads
- 🛣 Forest Service ML 3-5 Roads
- 🛣 Forest Service ML 2 Roads
- 🛣 Forest Service Trails
- 🌊 Stream/River
- 🌊 Stream/River Intermittent
- 🏠 Gathering Footprint
- 🚧 Closure Area
- 📐 Administrative FS Boundary
- 🗺 County Boundary
- 🌊 Lakes
- 🌿 Wetlands
- 🌿 Plumas National Forest Ownership
- 🌿 Lassen National Forest Ownership
- 🏠 State Public Lands
- 🏠 Other State Lands
- 🏠 Bureau of Land Management Lands



The USDA Forest Service makes no warranty, expressed or implied, including the warranties of merchantability and fitness for a particular purpose, nor assumes any legal liability or responsibility for the accuracy, reliability, completeness or utility of these geospatial data, or for the improper or incorrect use of these geospatial data. These geospatial data and related maps or graphics are not legal documents and are not intended to be used as such. The data and maps may not be used to determine title, ownership, legal descriptions or boundaries, legal jurisdiction, or restrictions that may be in place on either public or private land. Natural hazards may or may not be depicted on the data and maps, and users should exercise due caution. The data are dynamic and may change over time. The user is responsible to verify the limitations of the geospatial data and to use the data accordingly.

