

Briefing Area Map

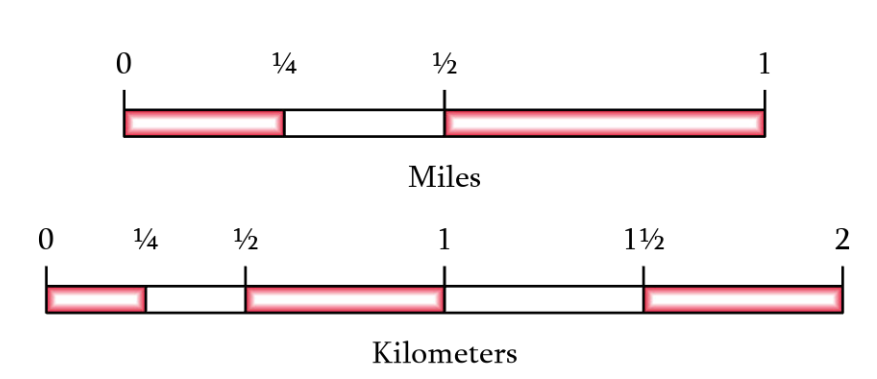
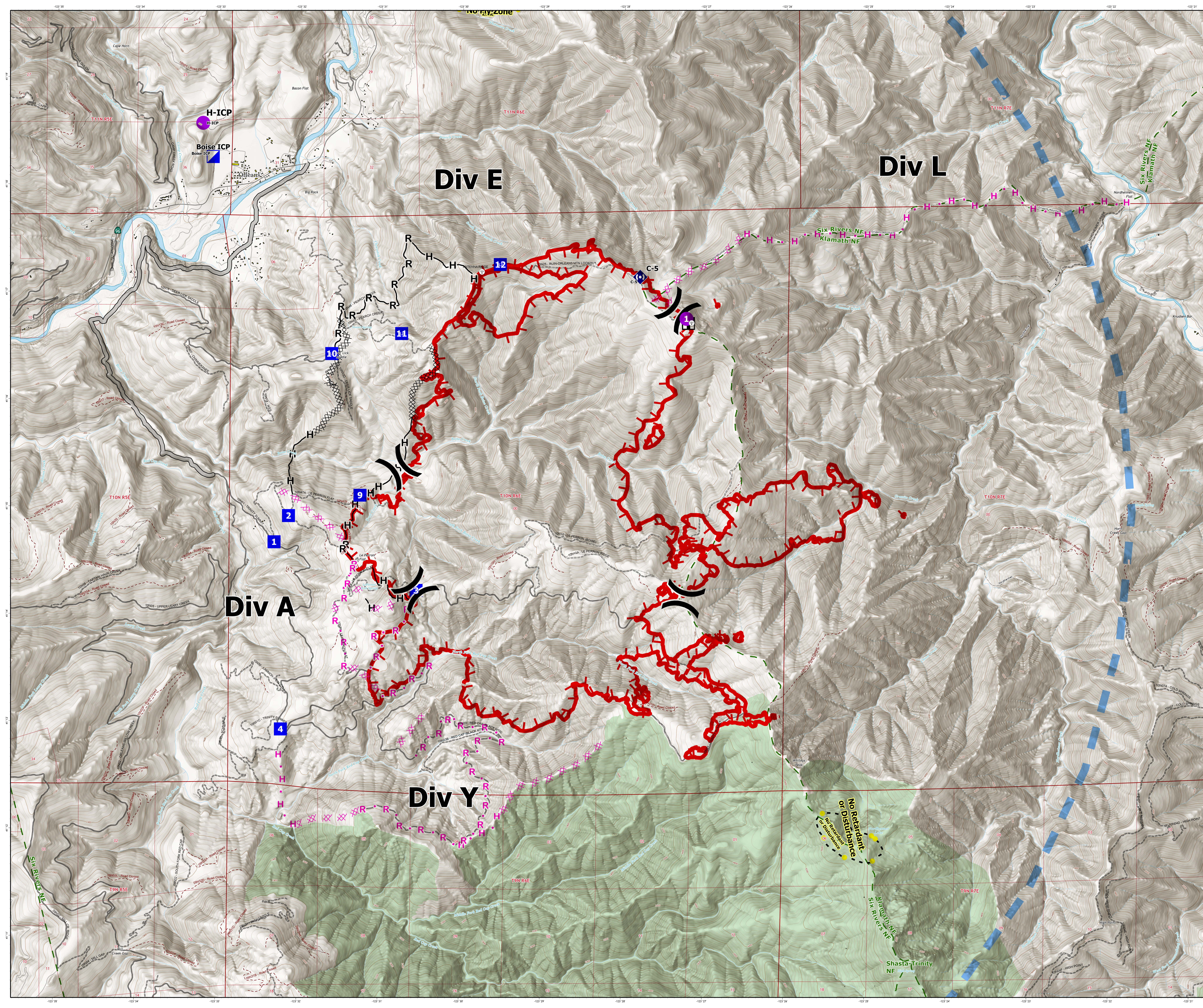
August 14, 2024

Boise Fire CA-SRF-000729

8,622 Acres

Acres from IR and GPS - August 14 | 15:09

- Helipot
- Division Break
- Incident Command Post
- Drop Point
- Lookout
- Repeater
- Completed Dozer Line
- Completed Hand Line
- Completed Road as Line
- Planned Dozer Line
- Planned Hand Line
- Planned Road as Line
- Access Route
- Highlighted Feature
- Temporary Flight Restriction
- Uncontained
- Special Uses Communications Sites
- Building Footprints
- USFS Admin Boundary
- USFS Wilderness
- National Forest System Transportation**
 - Paved Road
 - Gravel Road, Suitable for Passenger Car
 - Dirt Road, Suitable for Passenger Car
 - Road, Not Maintained for Passenger Car
 - National Forest System Roads closed to motorized uses
 - National Forest System Trails



1:19,000
Datum: North American 1983
Map Exported: 8/14/2024 17:11