

Air Operations Map

August 15, 2024

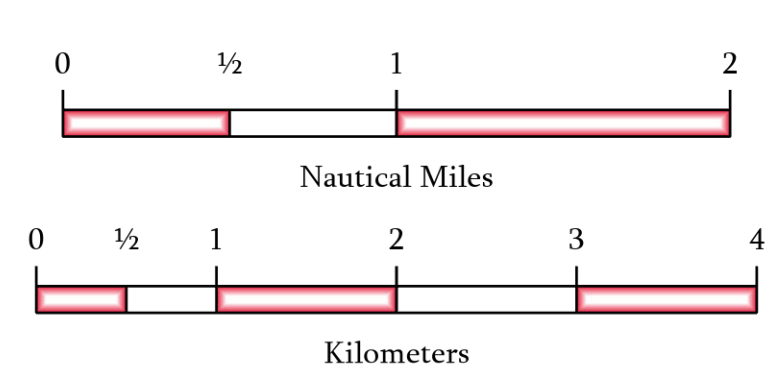
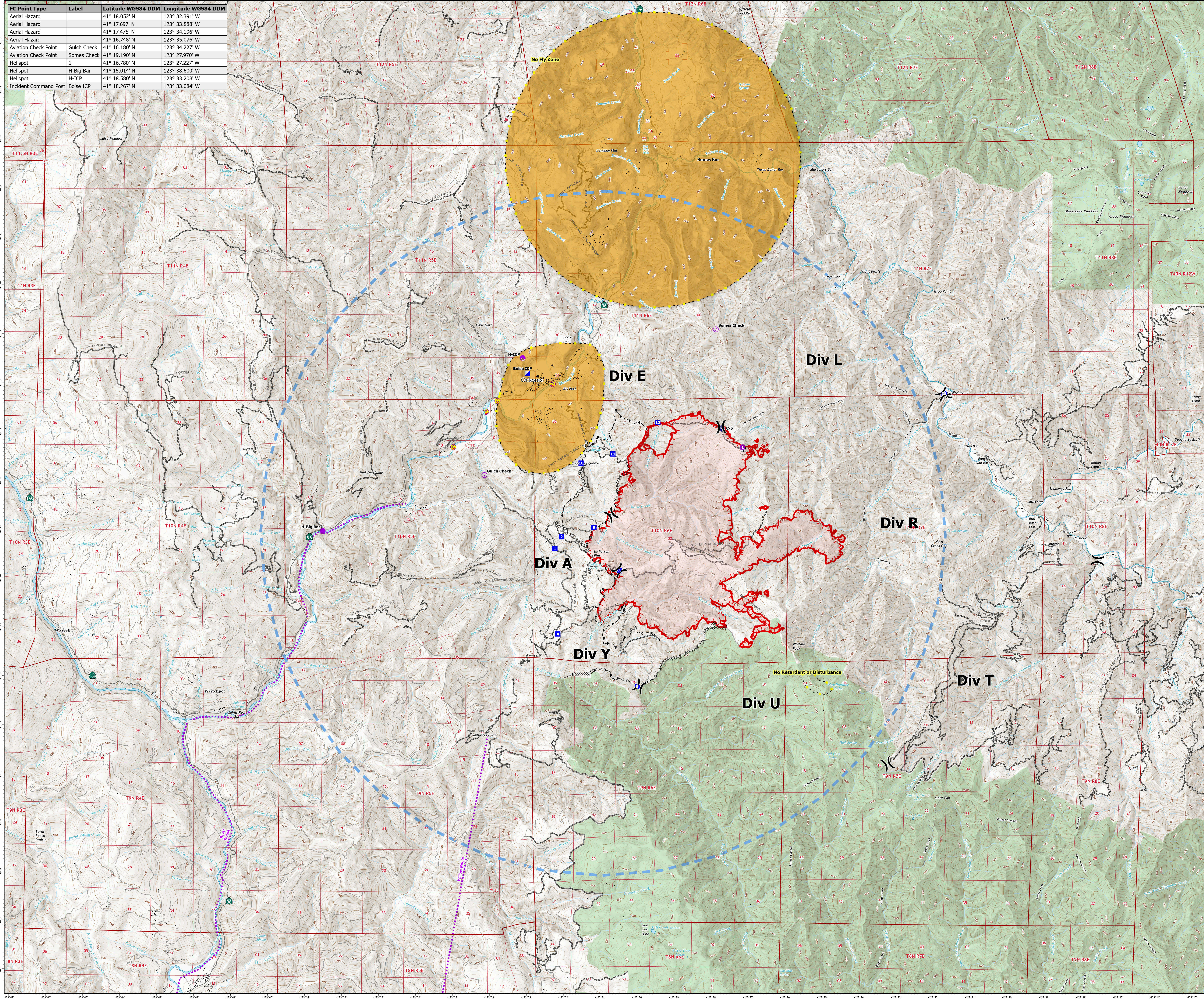
Boise Fire
CA-SRF-000729

9,690 Acres

Acres from IR and GPS - August 15 | 00:32

FC Point Type	Label	Latitude WGS84 DDM	Longitude WGS84 DDM
Aerial Hazard		41° 18.052' N	123° 32.391' W
Aerial Hazard		41° 17.697' N	123° 33.888' W
Aerial Hazard		41° 17.475' N	123° 34.196' W
Aerial Hazard		41° 16.748' N	123° 35.076' W
Aviation Check Point	Gulch Check	41° 16.180' N	123° 34.227' W
Aviation Check Point	Somes Check	41° 19.190' N	123° 27.970' W
Helispot	1	41° 16.780' N	123° 27.227' W
Helispot	H-Big Bar	41° 15.014' N	123° 38.600' W
Helispot	H-ICP	41° 18.580' N	123° 33.208' W
Incident Command Post	Boise ICP	41° 18.267' N	123° 33.084' W

- Aerial Hazard
- Aviation Check Point
- Helispot
- Division Break
- Incident Command Post
- Drop Point
- Lookout
- Repeater
- Completed Dozer Line
- Completed Hand Line
- Completed Road as Line
- Highlighted Feature
- Aviation Route
- Temporary Flight Restriction
- No Fly Zone
- Uncontained
- Building Footprints
- USFS Wilderness



1:42,000
Datum: North American 1983
Map Exported: 8/15/2024 1:05:00