

# Transportation Map

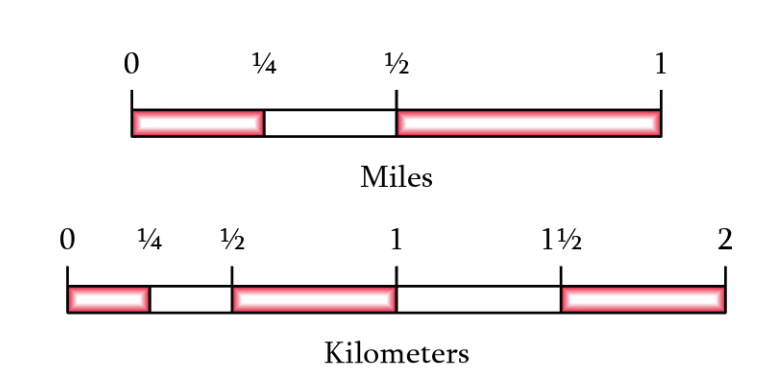
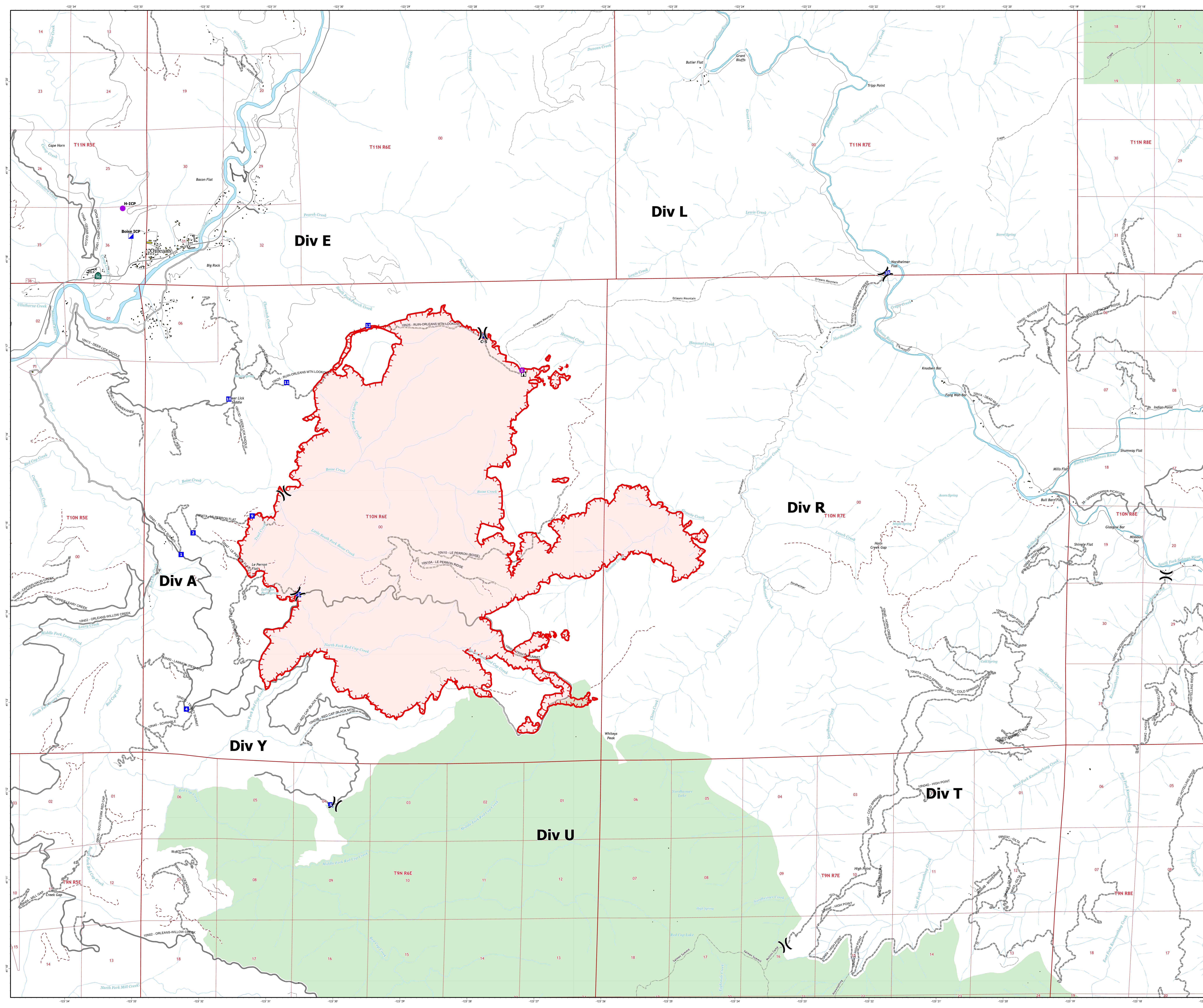
August 15, 2024

**Boise Fire**  
**CA-SRF-000729**

9,690 Acres

Acres from IR and GPS - August 15 | 00:32

- Helispot
- ⌵ Division Break
- ▣ Incident Command Post
- ▣ Drop Point
- ⌵ Lookout
- ⬢ Repeater
- Access Route
- ▭ Uncontained
- ▭ Building Footprints
- ▭ USFS Wilderness
- National Forest System Transportation**
  - Paved Road
  - Gravel Road, Suitable for Passenger Car
  - Dirt Road, Suitable for Passenger Car
  - Road, Not Maintained for Passenger Car
  - - - National Forest System Trails



1:23,000

Datum: North American 1983

Map Exported: 8/15/2024 1:55