

Transportation Map

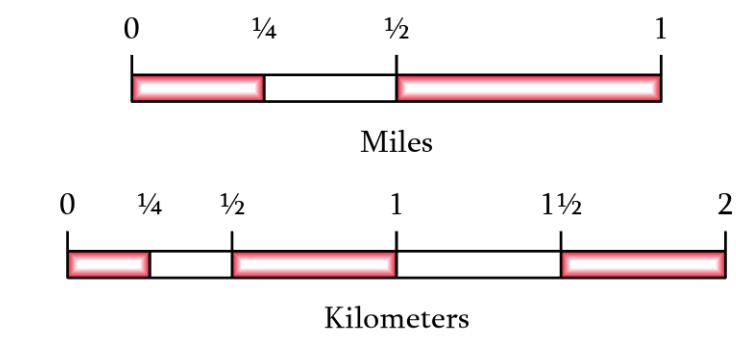
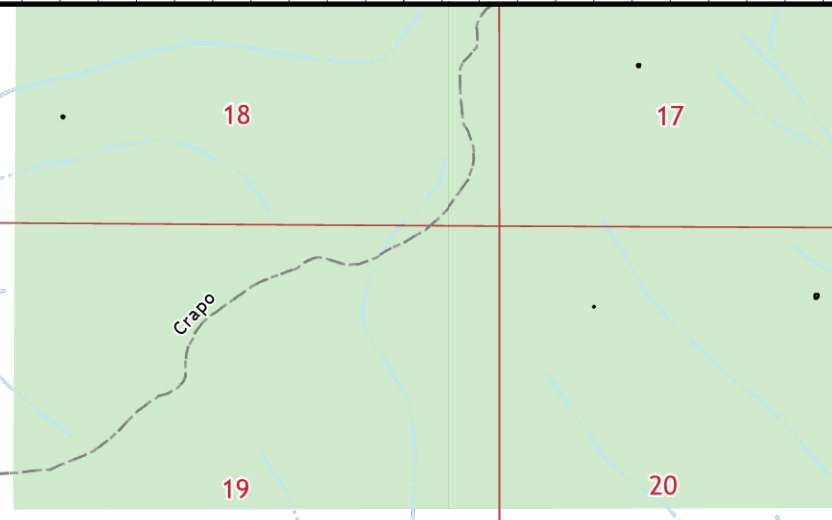
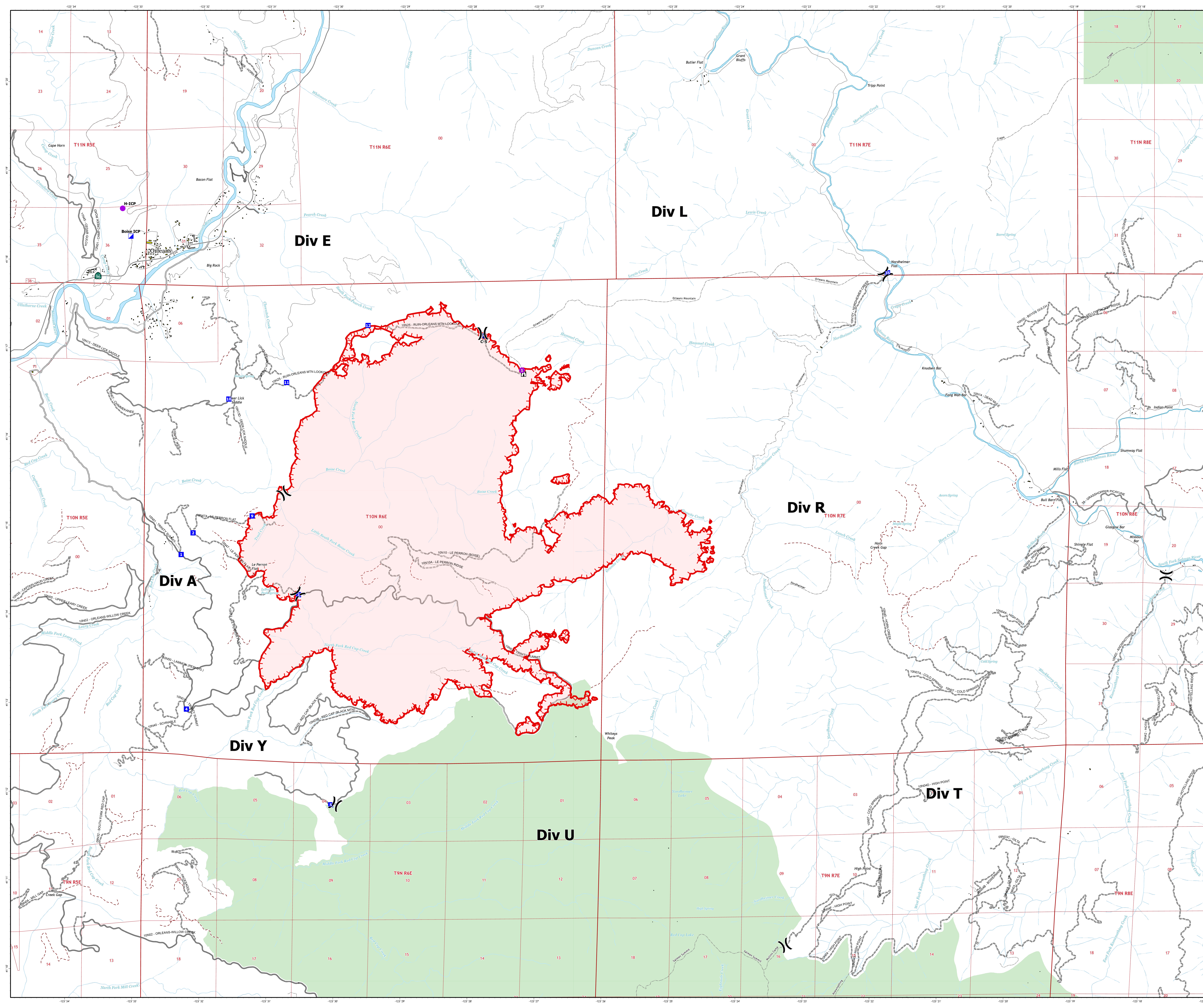
August 15, 2024

Boise Fire
CA-SRF-000729

10,205 Acres

Acres from IR and GPS - August 15 | 12:42

- Helispot
- ⌵ Division Break
- ▣ Incident Command Post
- ▣ Drop Point
- ⌵ Lookout
- ⬢ Repeater
- Access Route
- ▭ Uncontained
- ▭ Building Footprints
- ▭ USFS Wilderness
- National Forest System Transportation
 - Paved Road
 - Gravel Road, Suitable for Passenger Car
 - Dirt Road, Suitable for Passenger Car
 - Road, Not Maintained for Passenger Car
 - - - National Forest System Trails



1:23,000
Datum: North American 1983
Map Exported: 8/15/2024 1:45