

# Operations Map

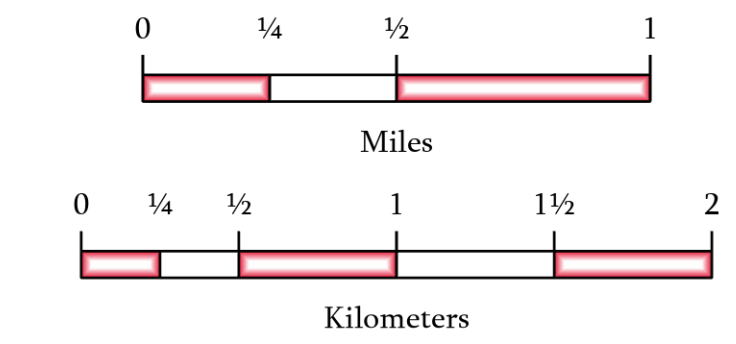
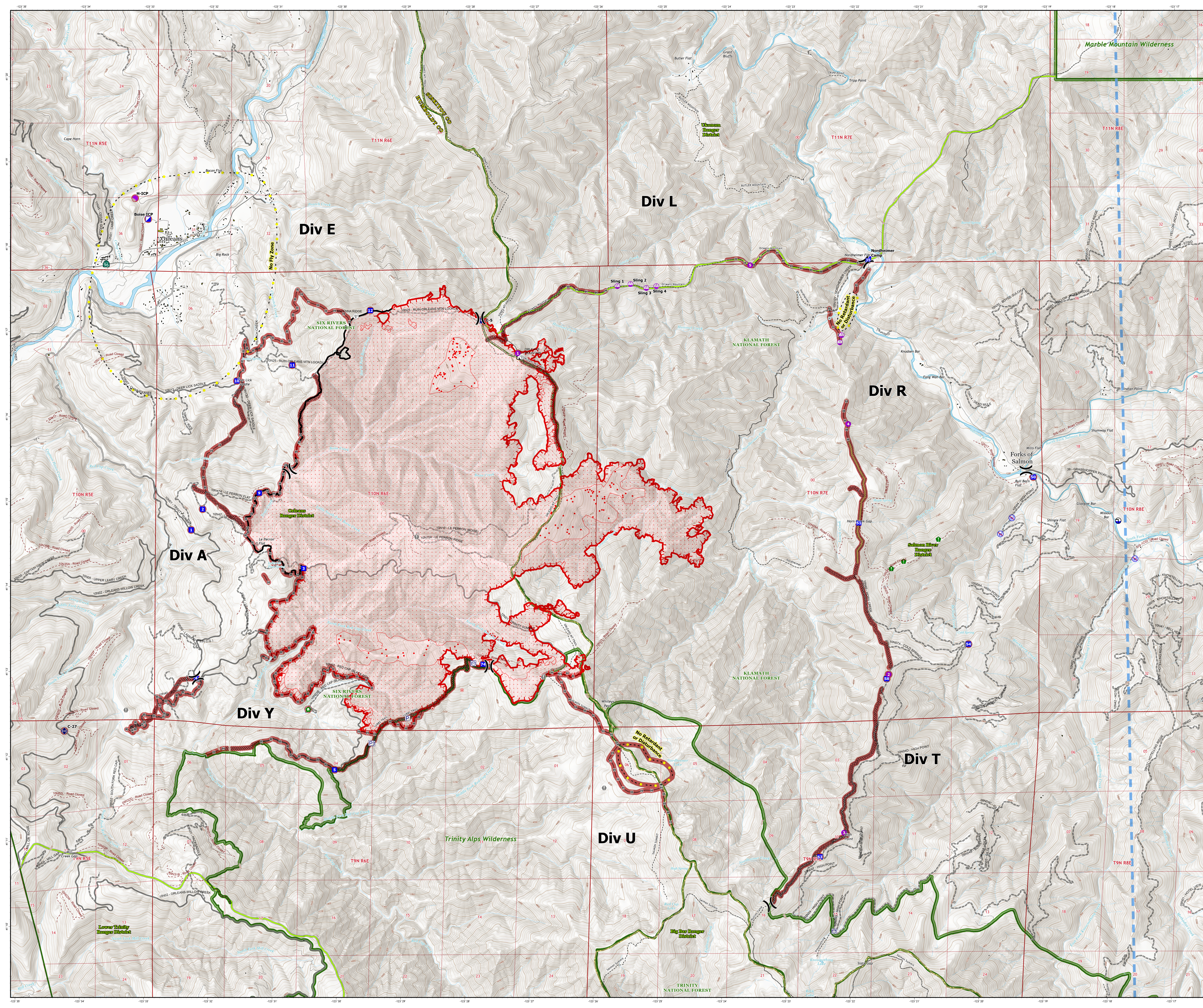
August 19, 2024

## Boise Fire CA-SRF-000729

12,052 Acres

Acres from IR and GPS - August 19 | 13:10

- Helispot
- Sling Site
- Division Break
- Incident Command Post
- Drop Point
- Camp
- Lookout
- Hot Spot - Spot Fire
- Value at Risk
- Structure Wrap
- Resource Location
- Repeater
- Draft Site
- Restricted Water Source
- Pump
- Water Tank
- Completed Dozer Line
- Completed Hand Line
- Completed Road as Line
- Access Route
- Highlighted Feature
- Repair Line
- Temporary Flight Restriction
- Contained
- Uncontained
- Special Uses Communications Sites
- Building Footprints
- County Boundary
- USFS Ranger District Boundary
- USFS Forest Boundary
- USFS Wilderness
- Point Repair Status
  - Repair Needed
  - Other - See Comments
- Line Repair Status
  - Repair Needed
- National Forest System Transportation
  - Paved Road
  - Gravel Road, Suitable for Passenger Car
  - Dirr Road, Suitable for Passenger Car
  - Road, Not Maintained for Passenger Car
  - National Forest System Roads closed to motorized uses
  - National Forest System Trails



1:24,000  
Datum: North American 1983  
Map Exported: 8/19/2024 14:33