

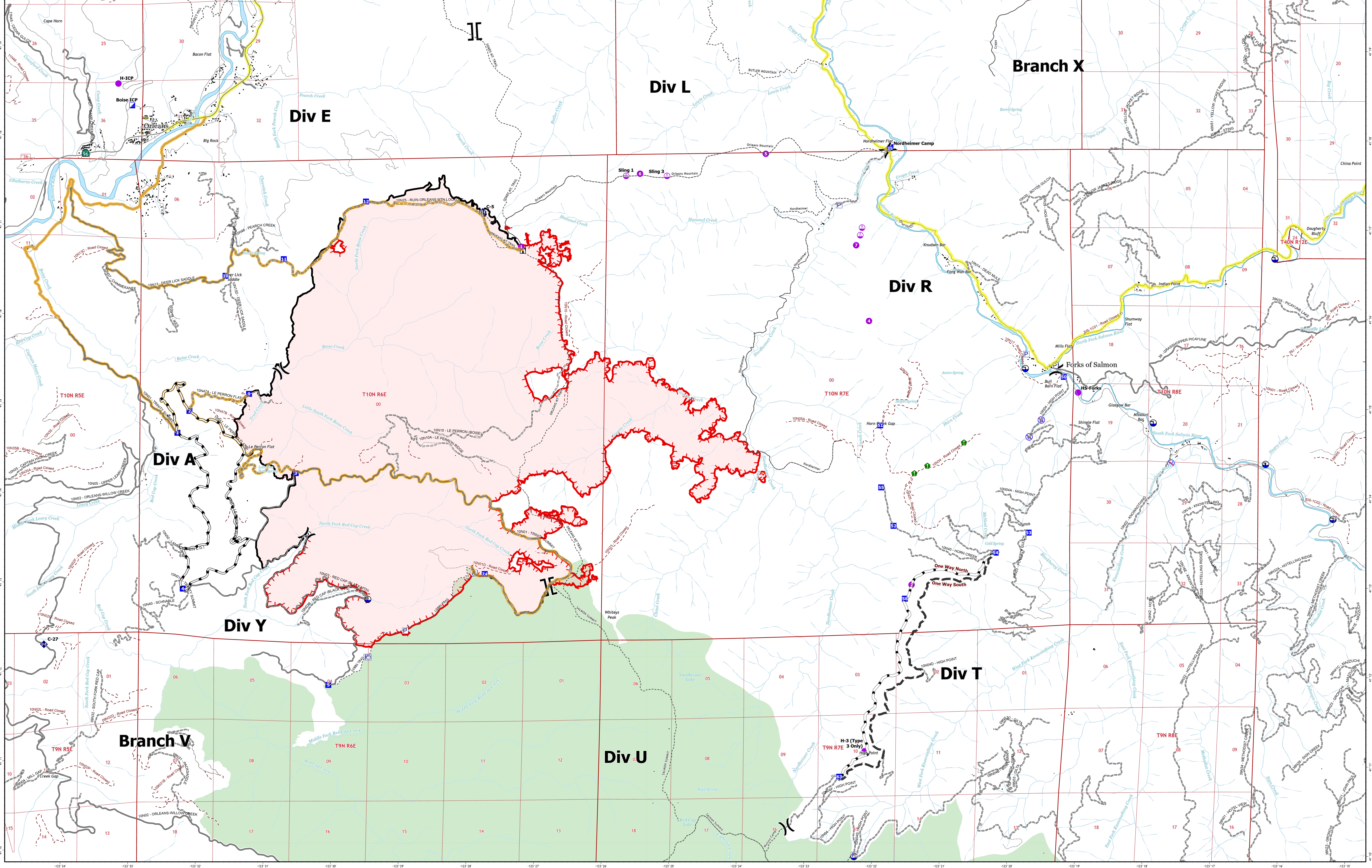
August 23, 2024

Boise Fire CA-SRF-000729

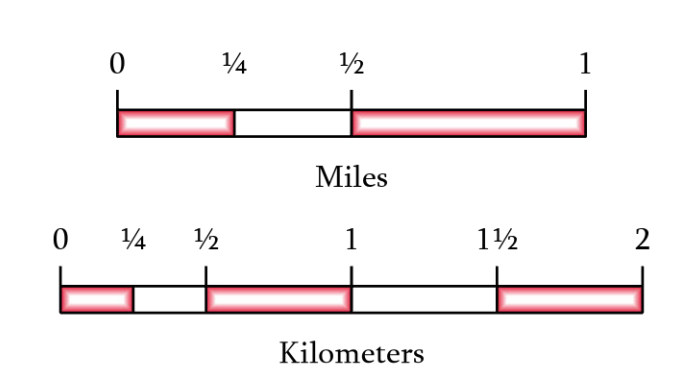
12,880 Acres

Acres from IR and GPS - August 22 | 12:41

IC Point Type	Label	North UTM684 DDM	East UTM684 DDM
Camp	Nordheimer Camp	41° 17.912' N	123° 21.762' W
Drop Point	1	41° 14.680' N	123° 32.303' W
Drop Point	10	41° 16.437' N	123° 31.604' W
Drop Point	11	41° 16.627' N	123° 30.744' W
Drop Point	12	41° 17.276' N	123° 29.531' W
Drop Point	2	41° 14.925' N	123° 32.127' W
Drop Point	3	41° 14.236' N	123° 30.547' W
Drop Point	35	41° 17.899' N	123° 31.768' W
Drop Point	4	41° 12.938' N	123° 32.210' W
Drop Point	5	41° 11.869' N	123° 30.047' W
Drop Point	50	41° 15.355' N	123° 19.181' W
Drop Point	51	41° 14.804' N	123° 21.896' W
Drop Point	52	41° 13.680' N	123° 21.693' W
Drop Point	53	41° 13.610' N	123° 19.693' W
Drop Point	54	41° 13.385' N	123° 20.181' W
Drop Point	55	41° 14.109' N	123° 21.878' W
Drop Point	58	41° 12.867' N	123° 21.521' W
Drop Point	63	41° 16.873' N	123° 22.481' W
Drop Point	74	41° 13.120' N	123° 22.743' W
Drop Point	9	41° 15.119' N	123° 31.246' W
Helispot	1	41° 16.780' N	123° 27.227' W
Helispot	2	41° 13.023' N	123° 21.422' W
Helispot	4	41° 15.969' N	123° 22.069' W
Helispot	5	41° 17.833' N	123° 23.609' W
Helispot	6	41° 17.603' N	123° 25.473' W
Helispot	7	41° 16.815' N	123° 22.264' W
Helispot	H-3 (Type 3 Only)	41° 11.158' N	123° 22.108' W
Helispot	H-Big Bar	41° 15.014' N	123° 38.600' W
Helispot	H-ICP	41° 18.580' N	123° 33.208' W
Helispot	H-S Forks	41° 15.178' N	123° 18.568' W
Incident Command Post	Boise ICP	41° 18.336' N	123° 33.004' W
Sling Site		41° 17.012' N	123° 31.278' W
Sling Site	Sling 1	41° 16.927' N	123° 22.204' W
Sling Site	Sling 3	41° 17.578' N	123° 25.679' W
Sling Site		41° 17.580' N	123° 25.071' W



- Helispot
- Sling Site
- Division Break
- Branch Break
- Incident Command Post
- Drop Point
- Camp
- Lookout
- Resource Location
- Repeater
- Draft Site
- Restricted Water Source
- Access Route
- Contained
- Uncontained
- Building Footprints
- USFS Wilderness
- National Forest System Transportation
 - Paved Road
 - Gravel Road, Suitable for Passenger Car
 - Dirt Road, Suitable for Passenger Car
 - Road, Not Maintained for Passenger Car
 - National Forest System Roads closed to motorized uses
 - Trails
- One Way North
- One Way South
- Drop Point Routes
- Orleans to Forks of Salmon



1:26,000
Datum: North American 1983
Map Expires: 8/22/2026 12:00:00