

INCIDENT ACTION PLAN

HILL INCIDENT

CA-SRF-000586
P5 R3Q5

Sunday



OPERATIONAL PERIOD

7/28/2024 0700
to
7/29/2024 0700



INTENTIONALLY LEFT BLANK

INCIDENT OBJECTIVES (ICS 202)

1. Incident Name: <p style="text-align: center;">HILL</p>	2. Operational Period:	Date From: 7/28/2024	Date To: 7/29/2024
		Time From: 0700	Time To: 0700

3. Objective(s):

Management Objectives

- Provide for emergency personnel and public safety.
- Protect values at risk including property, infrastructure, and natural resources.
- Coordinate all public information to provide timely and continuous information to agency partners, cooperators, stakeholders and the public.
- Foster and maintain relationships with partner agencies, elected officials, organizations, tribal partners, neighboring land owners and community groups and members.
- Protect economic, natural, cultural and heritage resources.
- Maintain fiscal accountability and keep costs commensurate with values at risk.
- Implement the approved suppression repair plan in accordance with the agencies specific guidelines.

Control Objectives

- Keep the fire North of the transmission line corridor on Cow Creek Ridge
- Keep the fire South of HWY 299 and Friday Ridge Road
- Keep the fire East of Snow Camp Mountain and Titlow Hill
- Keep the fire West of the South Fork of the Trinity River

Command Emphasis

- Don't let your guard down.

General Situational Awareness:

- Be alert. Keep calm. Think clearly. Act decisively.

5. Site Safety Plan Required? Yes No


Approved Site Safety Plan(s) Located at:

6. Incident Action Plan

- | | | | |
|---------------------------------------------|----------------------------------------------|---------------------------------------------|----------------------------------------------------|
| <input checked="" type="checkbox"/> ICS 202 | <input checked="" type="checkbox"/> ICS 215A | <input checked="" type="checkbox"/> FINANCE | <input checked="" type="checkbox"/> TRAINING |
| <input checked="" type="checkbox"/> ICS 203 | <input checked="" type="checkbox"/> ICS 204 | <input checked="" type="checkbox"/> OES | <input checked="" type="checkbox"/> MAPS |
| <input checked="" type="checkbox"/> IMET | <input checked="" type="checkbox"/> ICS 220 | <input checked="" type="checkbox"/> HR | <input checked="" type="checkbox"/> GROUND SUPPORT |
| <input checked="" type="checkbox"/> FBAN | <input checked="" type="checkbox"/> ICS 205 | <input checked="" type="checkbox"/> READ | <input checked="" type="checkbox"/> ICS 206 |
| <input checked="" type="checkbox"/> ICS 208 | <input checked="" type="checkbox"/> DEMOB | <input checked="" type="checkbox"/> PIO | <input checked="" type="checkbox"/> ICS 214 |

7. Prepared By: Jeremy Camacho	Position/Title: PSC	Signature:
8. Approved by Incident Commander: ICS 202	Rocky W. Opliger	Signature: ICT1

ORGANIZATION ASSIGNMENT LIST (ICS 203)

1. Incident Name: HILL		2. Operational Period: Date From: 7/28/2024 Time From: 0700		Date To: 7/29/2024 Time To: 0700	
3. Incident Commander(s) and Command Staff:			7. Operation Section:		
IC/UC's	R. Opliger/D. Scheurich/ K. Jacobson (T)	Operations	K. Williamson		
Deputy	B. Mackwood/J. Macomb (T)/ M. Ryan (T)/M. Nobles/R. Myers	Deputy Operations	L. Haack/L. Monsen(T)		
Safety Officer	M. Alforque/R. Danielsen/M. Macdonald/N. La Russo/M. Huneke	Night Ops	J. Walter		
Information Officer	Thomas Shoots/Stephanie Bishop	Planning Operations	Drew Graham/Abdul Ahmad/Rik Valles(T)		
Liaison Officer	J. Collier/T.Sanderson/C. Thompson	Branch	IV	BJ Imlach	
Human Resources	D. Taliaferro/P. Spearow (T)	Division/Group	A	M. Morganstern/J. Taylor (T)	
4. Agency/Organization Representatives:		Division/Group	C/D	J. Detmer	
Agency/Organization	Name	Division/Group	WEST SUPPRESSION REPAIR	Z. Cates (T)	
USFS AREP	N. Bunch/J. Wooley/N. Colegrove/ A. Miyagishima	Division/Group	STAGING	J. Tabush (12hr)	
AADM HUU	Kurt McCray	Division/Group			
AADM SRF	Ted MacArthur	Division/Group			
Line HUU	Derrick Misner	Branch	VIII	D. Pereira	
USFS READ	Erin Rentz	Division/Group	L	B. Good/M. Weston (T)	
CHP	Larry Depee	Division/Group	Z	J. Mendes/B. Baker (T)	
Cal Trans	Jeff Smith	Division/Group	EAST SUPPRESSION REPAIR	M. Carter/D. Guillian (T)	
CAL OES	Ryan Wakefield	Division/Group	NIGHT L/Z	D. Pearsall/L. Aspelin	
Humboldt County OES	Ryan Derby	Division/Group			
PG&E	Mike Minton	Division/Group			
Humboldt County Sheriff's Department	Josh McCall	Division/Group			
California Conservation Corps	John Cortez Jr.	Branch			
5. Planning Section:		Division/Group			
Chief	J. Camacho/J. Scuri/T. Reeves (T) R. Noon/K. O'Neil (T)	Division/Group			
Deputy	J. Windham/A. Murphy	Division/Group			
Resource Unit	J. Oliver/ H. Kelmanson/R Toby (T)/L. Pasero/C. Borello (T)	Division/Group			
Situation Unit	M. Hoose/ J. Hamer/T. Tarabelli/D. Campbell	Branch			
Documentation Unit	(RIST) L. Faller/N.Cloud	Division/Group			
Demobilization Unit	D. Sooy/R. DaRosa(T)	Division/Group			
GISS	M. Eister/ C. Barrett/F. Postler	Division/Group			
FBAN	K. Osborne/R. Clark/M. Diefenbach	Division/Group			
IMET	James White	Division/Group			
Training Tech Spec	C. Soiza/E. Picchi/H. Chan (T)	Air Operations Branch		Director:	P. Karpus
ITSS	G. Marquez/J. Whiteside/D. Howard	Air Support Group Supervisor		T. Detrick/ E. Johnson	
SCKN	A. Ewing (T)/J. Brackpool (T)	Air Tactical Group Supervisor			
6. Logistics Section		Helibase Manager (Willow Creek)		Branden Martin	
Chief	M. Ferguson/C. Raines/ M. Hale	Helibase Manager (Kneeland)		Chris Clower	
Supply Unit	C. Bonner	8. Finance/Administration Section:			
Facilities Unit	A. Brigges/B. Smutney	Chief	J. Reynolds/H. Perry/M. Patton		
Ground Support Unit	J. Burch/R. Brewer/K. Coulston	Time Unit	L. Holt/M. McConnell		
Communications Unit	K. Janes/B. Rapp	Procurement Unit	C. Erickson/J.Shifrin		
Medical Unit	R. Sandler/P. Dotson(T)	Comp/Claims Unit	S. Miner/C. Nerey		
		Cost Unit	V. Wilson/L. Zilka		
Prepared By: Name:	Jeremy Camacho	Position/Title:	PSC	Signature: 	
ICS 203		Date/Time:	7/27/2024 2300 hours		



Fire Weather Forecast

FORECAST NO: 9
PREDICTION FOR: Sunday - Monday
DATE: July 28th, 2024
FORECAST ISSUED: 2000 July 27th, 2024

FIRE: Hill Fire
UNIT: CA-SRF
IMET: James White (707-296-1635)
SIGNED: *James White*

WEATHER DISCUSSION: * Valleys = 2500 ft (Mosquito Creek), Ridgetop = 5500 ft (Grouse Mountain) *
Very similar and moderate conditions will continue today with high in the upper 70s to low 80s and RH struggling to drop much below 30 percent. A passing upper-level trough will help lift the mixing layer, allowing for better smoke clearing but also slightly enhanced onshore flow with gusts above 15 on ridges. Per usual, the effect of marine air will be strongest on the western side of the fire, though stronger winds will help marine influence spread more east compared to previous days. A fully developed marine layer is expected to envelop the fire by Monday with unusually cool and moist conditions.

SUNDAY:

WEATHER: Mostly clear.
MAX TEMP: Valleys: 77-82°F (Little Change) **3PM RH:** Valleys: 31-37% (3-6% ↑)
Ridgetops: 73-78°F (Little Change) Ridgetops: 35-40% (Little Change)
CHC WTG RAIN: 0% **CHC THUNDER:** 0% **INSTABILITY:** Medium

WINDS: Valleys: Upslope 1-3, afternoon north 4-8 mph.
(20 feet) Ridgetops: Upslope 3-6, afternoon northwest 8-12 mph.

MIXING HEIGHT: Rising to 2,000 ft by 1200. **TRANSPORT WIND:** Northwest 8-12 mph.

SUNDAY NIGHT:

WEATHER: Clear. Smoke settling in valleys.
MIN TEMP: Valleys: 54-58° (Little Change) **3AM RH:** Valleys: 64-74% (Little Change)
Ridgetops: 56-60° (Little Change) Ridgetops: 52-62% (1-3% ↑)
CHC WTG RAIN: 0% **CHC THUNDER:** 0% **INSTABILITY:** Low

WINDS: Valleys: Downslope 2-4 mph, strongest just after sunset.
(20 FEET) Ridgetops: North 2-4 mph.

MIXING HEIGHT: Dropping to 200 ft by 2200. **TRANSPORT WIND:** North 2-4 mph.

MONDAY:

WEATHER: Mostly clear.
MAX TEMP: Valleys: 74-78°F (2-4°F ↓) **3PM RH:** Valleys: 34-40% (2-4% ↑)
Ridgetops: 70-74°F (2-4°F ↓) Ridgetops: 38-44% (3-6% ↑)
CHC WTG RAIN: 0% **CHC THUNDER:** 0% **INSTABILITY:** Low

WINDS: Valleys: Upslope 1-3, afternoon north 3-6 mph.
(20 feet) Ridgetops: Upslope 2-4, afternoon northwest 6-10 mph.

MIXING HEIGHT: Rising to 2,200 ft by 1400. **TRANSPORT WIND:** Northwest 8-12 mph.

EXTENDED OUTLOOK: A deep marine layer will start next week off with cool and moist conditions. Though mixing heights may be elevated, general stability in the marine layer will limit smoke transport. Essentially all model ensemble members suggest a strong and prolonged period of heat and dry late in the week, though the exact strength is uncertain. About 50% of model members suggest a period of near record-breaking heat while the other half are more modest though still above average. As it builds in, such a pattern may also enhance northwest winds above normal.

—————→
Nearby Weather Observations



FIRE BEHAVIOR FORECAST

FORECAST NUMBER: 11	TYPE OF FIRE: Wildfire
FIRE NAME: Hill CA-SRF-00586	OPERATIONAL PERIOD: 24 Hour
DATE ISSUED: 07/27/2024	TIME ISSUED: 19:00
UNIT: Six Rivers National Forest	SIGNED: _____ Kevin Osborne 530-782-2712

INPUTS

WEATHER SUMMARY: **See attached Weather Forecast for details/discussion**

	07/28/2024 Day	07/28/2024 Night
Sky Weather	Mostly clear.	Clear. Some smoke settling in valleys.
Temp	Valleys: 77-82°F Ridgetops: 73-78°F	Valleys: 54-58°F Ridgetops: 56-60°F
RH %	3PM Valleys: 31-37% Ridgetops: 35-40%	3AM Valleys: 64-74% Ridgetops: 52-62%
20 ft. Winds	Valleys: Upslope 1-3, PM north 4-8 mph. Ridgetops: Upslope 3-6, PM NW 8-12 mph.	Valleys: Downslope 2-4 mph, strongest just after sunset. Ridgetops: North 2-4 mph.
Stability	Weaker inversion, mixing height rising to 2,000 ft. AGL by 12:00	Inversion developing after sunset, mixing height lowering to 200 ft. AGL by 22:00

FIRE BEHAVIOR OUTPUTS

GENERAL

As has been the case for much of July, the overall fuels complex is readily available, leaving the door open for problematic fire behavior should fire move beyond current containment lines. Spot fires remain the most likely cause of such movement, with interior tree torching, roll-out, and re-burn ranking as the most probable triggers for spotting. Conditions are very similar to yesterday, with spotting distances at a maximum of 1/3 of a mile and POI near 70%.

The main weather changes from yesterday are a decrease in the strength of the inversion and a slight increase in wind speeds. These subtle changes will not be sufficient to alter predicted fire behavior; fire under the inversion and out of wind or slope alignment will exhibit flanking and backing fire behavior with flame lengths below 4 ft. If spot fires ignite or interior runs develop in alignment with wind or slope, expect flame lengths near 7 - 8ft. The likelihood of this alignment is decreasing each day as interior fuels consume, and areas of intense heat diminish.

Consider reviewing a pocket card for local knowledge on fire environment triggers and thresholds:

BI Pocket Card Threshold: 29 BI 97 th Percentile: 39.57 BI Forecast Value: 35 NOTE - wind <i>IS</i> a part of BI	Six Rivers Pocket Card 	ERC Pocket Card Threshold: 39 ERC 97 th Percentile: 51.97 ERC Forecast Value: 51.57 NOTE - wind <i>IS NOT</i> part of ERC
--------------------------------------------------------------------------------------------------------------------------------------------------------	---------------------------------------------------------------------------------------------------------------	-----------------------------------------------------------------------------------------------------------------------------------------------------------------

SPECIFIC

Div A (South) and Div C (West): Areas of recent interior activity in the Packeka Creek and Spike Buck Creek drainages will continue to smolder and produce visible smoke. Heavy fuels in these locations burned a week to ten days after much of the fire footprint and can hold heat and produce firebrands after fuels in surrounding areas are cold. Areas of cured or scorched canopy will continue to have reburn potential, and leaf/needle fall below cured canopy fuels is ongoing. Fallen leaves and needles remain receptive to ignition, and short-range spotting from these fuels is possible if lofted by wind.

Div D (North): Extended burnout times of heavy fuels will create stump holes and ash pits within the black. Expect isolated smoke production from any large-diameter fuels still smoldering.

Div L (East) and Div Z (Southeast): Ridge winds are unfavorable, however, fire is at control lines across both divisions and crews are working on mop-up and securing the lines. Heavy dead and down fuels will retain heat and continue to smolder with heavy mop up potential. Re-burn potential exists in areas where the ground fuels have been consumed and the canopy has been cured. Jackpots of heavy dead and down fuels pose a spotting threat while heat remains. Spread outside of the current control features is not anticipated.

AIR OPERATIONS

Better mixing as a result of a weaker inversion and the reduction in smoke production will result in clearer air and more opportunities for aerial operations if resources on the ground have a need.

SAFETY

There are reports of numerous deep stump holes being encountered during mop-up. This is likely to continue as forces gain depth and search out residual heat. Stump holes can be 2-3 feet deep and deceptively difficult to see when walking through recently burned areas. Be sure to properly wear all appropriate PPE to avoid burn injury.

Hill Incident – Safety Message

INCIDENT #CA-SRF-000586

DATE: 07/28-29/2024 TIME: 0700-0700 24 Hour Shift

Keep your head in the game

- Stay focused on today's work assignment.
- Continue planning to provide for safety, then accomplish the mission.
- Watch for complacency or distraction in others and help them stay sharp.
- Brief your firefighters thoroughly and be methodical and meticulous in your tactics to get the job done safely.

Stump Holes/ Ash Pits

- **Situational Awareness:** Be alert for stump holes and ash pits when mopping up.
- **Identify stump holes and ash pits** to all personnel.
- **Work with extreme caution in the area:** Wear and use all approved PPE properly. Use the Risk Management Process (IRPG p. 1) to engage.
- **Be alert for hidden hazards:** Burning root systems near stump holes can collapse when stepped on.
- **Beat the Odds:** Most significant burns occur from stump holes and ash pits.

Wildlife Returning to the Fire Area

- **Awareness.** Numerous sightings of bears with cubs have been reported throughout the fire.
- **Give them space.** Maintain a distance of at least 100 yards from predators like bears. Do not engage wildlife, even from a safe distance.
- **Watch the road.** Vehicle strikes are often the most deadly threats to wildlife. Forest roads cut through natural habitats.
- **Properly store your food and dispose of trash.** Intentionally or unintentionally feeding wildlife can cause them harm and make them dependent on people for food. It also puts you at risk of an encounter with a wild animal.
- **Backhaul all trash from the fire.** Do not allow food waste and other smellable trash to accumulate at drop points.

Avoid Hazardous Attitudes

- **Invulnerable** – That can't happen to us.
- **Anti-authority** – Disregard of the team effort.
- **Impulsive** – Do something even if it's wrong.
- **Macho** – Trying to impress or prove something.
- **Complacent** – Just another routine fire.
- **Resigned** – We can't make a difference.
- **Group Think** – Afraid to speak up or disagree.

Prepared by:

*Michael Huneke (SOF1)
Lucas Lambert (SOF2-T)*

BR/DV	HAZARDOUS ACTIONS – CONDITIONS	MITIGATIONS – WARNINGS – REMEDIES	
ALL	TRAFFIC HAZARDS AND DRIVING	<ul style="list-style-type: none"> Take extra precautions when entering or exiting the roadways. Maintain high visibility in the operational area. Many roads are narrow and mid-slope, with soft shoulders. Allow heavy vehicles to pass on the uphill side. Use spotters when backing or turning around. Keep your speed down in all areas. Drive at or below posted speed limits. Use chock blocks and turn wheels into hills. Be alert for wildlife. Dusk to Dawn poses the greatest potential for accidents. Follow all incident travel plans and routes. Expect road blocks and stopped traffic around construction zones on Highway 299. 	
ALL	STEEP TERRAIN & ROLLING DEBRIS	<ul style="list-style-type: none"> Maintain 8'-10' spacing when working & walking. Do not work above any personnel. Evaluate the necessity of sending personnel into areas with limited access. 	
ALL	HAZARD / DANGER TREES	<ul style="list-style-type: none"> Follow Hazard Tree Safety Guidelines (IRPG p.20.) Limit the number of personnel around snags and their exposure time. Fallers must be qualified for the trees being felled. Be alert around hazard trees during wind events, even green trees. The hazard zone extends a minimum of 2½ tree lengths. Avoid parking vehicles or taking breaks under or near hazard trees. 	
ALL	FATIGUE & COMPLACENCY	<ul style="list-style-type: none"> Be alert, monitor all resources for signs of fatigue, and take breaks as necessary. Maintain a 2:1 Work to rest ratio. Repeated assignments in the same area can lead to complacency, making personnel vulnerable to accidents. Take steps to maintain situational awareness for the duration of the incident. Take tactical pauses as practical and feasible. 	
ALL	SUPPRESSION REPAIR	<ul style="list-style-type: none"> Ensure communications are established with operators. Use hand signals if other communications are unavailable. Maintain a 50' – 100' exclusion area around equipment. Use road guards as needed to control traffic. Assess areas of operation for hazards and obstructions. Use proper PPE when operating chippers. Ensure fire suppression equipment is available near masticator operations. 	
ALL	COMMUNICATIONS	<ul style="list-style-type: none"> Think about what you are going to say before you speak. Ensure your radio has the current clone and you are on the correct channels. Listen for other radio traffic before you speak. Scan assigned frequencies and listen to what adjacent resources are doing. 	
ALL	MOP-UP & PATROL	<ul style="list-style-type: none"> Balance the risk of exposure to hazards against the mop-up objective. Evaluate areas for hazard trees and locate stump holes for avoidance. Monitor fatigue; shorten shifts to increase rest where appropriate. Review and follow "Look Up, Look Down, Look Around" procedures. Evaluate mop-up distances against what is safe and necessary. 	
ALL	NIGHT OPERATIONS	<ul style="list-style-type: none"> Have a purpose for where you drive and what you do. Use caution when parking or staging in steep areas. Use available time to brief crews on roads, terrain, and potential rolling material, especially if the resources are new to the area. Use glow sticks to mark hazards and ensure personnel have headlamps. 	
ALL	EXTERNAL DISTRACTIONS/ STRESS	<ul style="list-style-type: none"> Resources operating on the fire may be impacted in their personal lives by current events external to the fire. Communicate with home/ family members, allow resources to communicate as needed. Avoid misinformation, remain focused on your assignment. Seek help when a higher level of care is necessary. 	
ALL	AIR OPERATIONS	<ul style="list-style-type: none"> Follow "Aviation Watch Out Situations" (IRPG p.62). Do not depend on air resources for tactical support or medical transportation. Refer to IRPG p.74 for directing bucket drops. Ensure positive communication with air resources. 	
ALL	FIRE BEHAVIOR	<ul style="list-style-type: none"> Are you seeing what we have predicted? Conduct thorough assessments before starting work. Ensure LCES in place. Plan & communicate your exit strategy with your crew and adjacent resources. Provide additional briefings for new resources and maintain communications. 	
<p>INCIDENT NAME: HILL FIRE</p>		<p>OPERATIONAL PERIOD: 0700 – 0700 JULY 28-29, 2024 Date/Time Prepared: 07/27/2024 – 1600</p>	<p>Prepared by: M. Huneke SOF1/ L. Lambert SOF2(t)</p>

ASSIGNMENT LIST (ICS 204 WF)

CONTROLLED UNCLASSIFIED
INFORMATION//BASIC

1. Incident Name:	2. Operational Period:	3. Branch	Division
HILL	Date From: 07/28/24 Date To: 07/29/24 Time From: 0700 Time To: 0700	IV	A
4. Operations Personnel:		Page 1 of 1	Alpha

Operations Section Chief: K. Williamson	Night Ops: J. Walter
Branch Director: BJ Imlach	Branch Safety: M. Lacy/W. Morgan (T)
Division/Group Supervisor: M. Morganstern/J. Taylor (T)	Air Attack:

5. Resources Assigned:	** Resources Below in Bold are 12 Hour **						
Resource Identifier	ALS	LWD	Leader	Personnel	Request #	Hours	Reporting Location
STC NEU 9231C		8/10	B. SKEHAN	16	E-20220	0700-0700	DP-4
STG LNU 9144G CDCR		8/2	M. WATSO	27	C-20018	0700-0700	DP-4
CRW PVT C-20032			N. SOLIS	20	C-20032	0700-1900	DP-4
CRW PVT C-20033			P. RODRIGUEZ	20	C-20033	0700-1900	DP-4
W/T PVT E-20026			R.WALTON	2	E-20026	0700-0700	DP-4
W/T PVT E-20027			S. BAKER	2	E-20027	0700-0700	DP-4
W/T PVT E-20149			J. FREEZE	2	E-20149	0700-0700	DP-4
FALM PVT O-20286			T. JANOWIAK	2	O-20286	0700-1900	DP-4
FEMP HIBBARD	X		J.HIBBARD	1	O-20142	0700-0700	DP-4
FEMT OROZCO (T)			J. OROZCO	1	O-20289	0700-0700	DP-4

6. Work Assignments:
 Fall hazard trees.
 Mop up 300 ft from control lines.
 Pull hoselays where no longer required.
 Back haul trash and excess supplies.

7. Special Instructions:
 All resources with 20000 series request numbers, your base camp will be at Redwood Acres Fairgrounds Eureka.
 After Operational Briefing, division breakouts will be at DP-4.
 *No Heavy Equipment at DP 40 (Vista Point)

8. Communications								
Name	Ch	Function	Rx Freq	Rx Tone	Tx Freq	Tx Tone	Mode	Notes
NIFC C1	1	COMMAND	170.9750	(T1) 110.9	168.7000	(T1) 110.9	A	HORSE MTN (NORTH)
NIFC T1	6	TACTICAL	168.0500	(T1) 110.9	168.0500	(T1) 110.9	A	
A/G CMD	13	A/G CMD	170.3125	0.0	170.3125	0.0	A	
CALCORD	15	MEDICAL	156.0750	(T6) 156.7	156.0750	(T6) 156.7	A	
AIRGUARD	16	EMERGENCY	168.6250	0.0	168.6250	(T1) 110.9	A	

9. Prepared by: Name: Ryan Toby (T) RESL
 Signature: RYAN TOBY
ICS 204 Date/Time: 7/27/2024 2200 Personnel Count: 93

ASSIGNMENT LIST (ICS 204 WF)

CONTROLLED UNCLASSIFIED
INFORMATION//BASIC

1. Incident Name:			2. Operational Period:				3. Branch		Division	
HILL			Date From: 07/28/24		Date To: 07/29/24		IV		C/D	
			Time From: 0700		Time To: 0700		Page 1 of 1		Charlie	
4. Operations Personnel:										
Operations Section Chief: K. Williamson						Night Ops: J. Walter				
Branch Director: BJ Imlach						Branch Safety: M. Lacy/W. Morgan (T)				
Division/Group Supervisor: J. Detmer						Air Attack:				
5. Resources Assigned:			** Resources Below in Bold are 12 Hour **							
Resource Identifier	ALS	LWD	Leader	Personnel	Request #	Hours	Reporting Location			
STC LNU 9145C		8/8	C. ARAGON	18	E-20155	0700-0700	DP-15			
CRW PVT C-20035			O. QUEVEDO	20	C-20035	0700-1900	DP-15			
CRW PVT C-20036			B. SANDOLVA	20	C-20036	0700-1900	DP-15			
W/T PVT E-20024			Z. FOSTER	2	E-20024	0700-0700	DP-15			
W/T PVT E-20025			N. CORP	2	E-20025	0700-0700	DP-15			
W/T PVT E-20176			D. BOLER	2	E-20176	0700-0700	DP-15			
FEMT HERNANDEZ			RAUL HERNANDEZ	1	O-20223	0700-1900	DP-15			
REMS NORTH COUNTY	X		C.BAKER	3	O-20227	0700-1900	DP-15			
ARCH STANBROUGH		8/1	S. STANBROUGH	1	O-176	0700-1900	DP-15			
ARCH BONSKOWSKI		8/4	A. BONSKOWSKI	1	O-166	0700-1900	DP-15			
6. Work Assignments:										
Mop up 300 ft from control lines.										
Back haul trash and excess supplies.										
7. Special Instructions:										
All resources with 20000 series request numbers, your base camp will be at Redwood Acres Fairgrounds Eureka.										
After Operational Briefing, division breakouts will be at DP-15.										
*No Heavy Equipment at DP 40 (Vista Point)										
8. Communications										
Name	Ch	Function	Rx Freq	Rx Tone	Tx Freq	Tx Tone	Mode	Notes		
NIFC C1	1	COMMAND	170.9750	(T1) 110.9	168.7000	(T1) 110.9	A	HORSE MTN (NORTH)		
NIFC T4	7	TACTICAL	166.7250	(T1) 110.9	166.7250	(T1) 110.9	A			
A/G CMD	13	A/G CMD	170.3125	0.0	170.3125	0.0	A			
CALCORD	15	MEDICAL	156.0750	(T6) 156.7	156.0750	(T6) 156.7	A			
AIRGUARD	16	EMERGENCY	168.6250	0.0	168.6250	(T1) 110.9	A			
9. Prepared by: Name:										
Ryan Toby (T)				RESL						
								Signature: <i>RYAN TOBY</i>		
ICS 204	Date/Time: 7/27/2024 2200				Personnel Count: 70					

ASSIGNMENT LIST (ICS 204 WF)

CONTROLLED UNCLASSIFIED
INFORMATION//BASIC

1. Incident Name: <p style="text-align: center; margin: 0;">HILL</p>			2. Operational Period: Date From: 07/28/24 Date To: 07/29/24 Time From: 0700 Time To: 0700				3. Branch <p style="text-align: center; margin: 0;">IV</p>		Division <p style="text-align: center; margin: 0;">WEST SUPPRESSION REPAIR</p>	
4. Operations Personnel:						Page 1 of 2				
Operations Section Chief: K. Williamson			Night Ops: J. Walter							
Branch Director: BJ Imlach			Branch Safety: M. Lacy/W. Morgan (T)							
Division/Group Supervisor: Z. Cates (T)			Air Attack: Branden Martin							
5. Resources Assigned:		** Resources Below in Bold are 12 Hour **								
Resource Identifier	ALS	LWD	Leader	Personnel	Request #	Hours	Reporting Location			
FIRS CURTIS			C. CURTIS	1	O-20343	0700-1900	DP-80			
CRW PVT C-20034			R. BODELLA	20	C-20034	0700-1900	DP-80			
CRW PVT C-20037			E. AYALA	20	C-20037	0700-1900	DP-80			
CRW PVT C-20054			V. MONTANO	20	C-20054	0700-1900	DP-80			
DOZ PVT E-20015			J. Moore	2	E-20015	0700-0700	DP-80			
DOZ PVT E-20016			D. EVANS	2	E-20016	0700-0700	DP-80			
DOZ PVT E-20229			M. BROWN	1	E-20229	0700-0700	DP-80			
DOZ PVT E-20230			K. ALBRIGHT	1	E-20230	0700-0700	DP-80			
W/T PVT E-20148			A. LOWE	1	E-20148	0700-0700	DP-80			
W/T PVT E-20182			T. LOWE	2	E-20182	0700-0700	DP-80			
W/T PVT E-20184			D. RAMOS	2	E-20184	0700-0700	DP-80			
W/T PVT E-20234			R. BLANCETT	2	E-20234	0700-0700	DP-80			
W/T PVT E-20260			R. MARTINEZ	2	E-20260	0700-0700	DP-80			
W/T PVT E-20262			I. MIDDLEBROOK	2	E-20262	0700-0700	DP-80			
MAS PVT E-20159			A. DANIELS	2	E-20159	0700-0700	DP-80			
MAS PVT E-20160			T. BONAS	2	E-20160	0700-1900	DP-80			
MAS PVT E-20161			A. RAYGOZA	2	E-20161	0700-0700	DP-80			
MAS PVT E-20162			C. MACOMBER	2	E-20162	0700-0700	DP-80			
6. Work Assignments:										
Repair all dozer lines and brush removal on Powerline Rd., from FS Route 1 to South Fork of Trinity River. Pull and knock down all berms. Follow all requirements for rolling dips and water bars.										
Repair all dozer lines and brush removal from DP-80 to DP-15 on FS Route 1. Follow all requirements in Suppression Repair Guidelines.										
Repair and replace all identified suppression caused damage to improvements.										
7. Special Instructions:										
All resources with 20000 series request numbers, your base camp will be at Redwood Acres Fairgrounds Eureka.										
After Operational Briefing, division breakouts will be at DP-80.										
*No Heavy Equipment at DP 40 (Vista Point)										
8. Communications										
Name	Ch	Function	Rx Freq	Rx Tone	Tx Freq	Tx Tone	Mode	Notes		
NIFC C1	1	COMMAND	170.9750	(T1) 110.9	168.7000	(T1) 110.9	A	HORSE MTN (NORTH)		
VFIRE 25	11	TACTICAL	154.2875	(T6) 156.7	154.2875	(T6) 156.7	A	WEST		
A/G CMD	13	A/G CMD	170.3125	0.0	170.3125	0.0	A			
CALCORD	15	MEDICAL	156.0750	(T6) 156.7	156.0750	(T6) 156.7	A			
AIRGUARD	16	EMERGENCY	168.6250	0.0	168.6250	(T1) 110.9	A			
9. Prepared by: Name: Ryan Toby (T) RESL										
						Signature: <i>RYAN TOBY</i>				
ICS 204		Date/Time: 7/27/2024 2200			Personnel Count: 84					

ASSIGNMENT LIST (ICS 204 WF)

CONTROLLED UNCLASSIFIED
INFORMATION//BASIC

1. Incident Name: <p style="text-align: center;">HILL</p>	2. Operational Period: Date From: 07/28/24 Date To: 07/29/24 Time From: 0700 Time To: 0700	3. Branch <p style="text-align: center;">IV</p>	Division <p style="text-align: center;">WEST SUPPRESSION REPAIR</p>
4. Operations Personnel:		Page 2 of 2	

Operations Section Chief: K. Williamson	Night Ops: J. Walter
Branch Director: BJ Imlach	Branch Safety: M. Lacy/W. Morgan (T)
Division/Group Supervisor: Z. Cates (T)	Air Attack: Branden Martin

5. Resources Assigned:	** Resources Below in Bold are 12 Hour **						
Resource Identifier	ALS	LWD	Leader	Personnel	Request #	Hours	Reporting Location
MAS PVT E-20171			T. WRIGHT	1	E-20171	0700-1900	DP-80
MAS PVT E-20235			S. GREGORY	2	E-20235	0700-1900	DP-80
MAS PVT E-20236			D. SEADORN	2	E-20236	0700-0700	DP-80
EXC PVT E-20277			M. MORRISSON	2	E-20277	0700-0700	DP-80
EXC PVT E-20278			A. VERA	2	E-20278	0700-0700	DP-80
SKD PVT E-20169			R. DOLCINI	1	E-20169	0700-1900	DP-80
SKT PVT E-20168			G. STACHER	2	E-20168	0700-0700	DP-80
SKT PVT E-20170			N.BUNDY	2	E-20170	0700-0700	DP-80
CHP PVT E-61		7/31	B. LUIS	3	E-61	0700-1900	DP-80
MLCH PVT E-20263			R. TAYLOR	1	E-20263	0700-0700	DP-80
MLCH PVT E-20272			P. CUEVAS	2	E-20272	0700-0700	DP-80
FALM PVT E-20358			L. BURKE	2	O-20358	0700-1900	DP-80
HEQB MCNICHOLAS			M. MCNICHOLAS	1	O-20007	0700-0700	DP-80
HEQB BLAS			C. BLAS	1	O-20327	0700-0700	DP-80
HEQB CRANDELL			K. CRANDELL	1	O-20281	0700-0700	DP-80
HEQB GORDON (T)			H. GORDON	1	O-20080	0700-0700	DP-80
HEQB ANDERSON (T)			R. ANDERSON	1	O-20027	0700-0700	DP-80

6. Work Assignments:
 Repair all dozer lines and brush removal on Powerline Rd., from FS Route 1 to South Fork of Trinity River. Pull and knock down all berms. Follow all requirements for rolling dips and water bars.
 Repair all dozer lines and brush removal from DP-80 to DP-15 on FS Route 1. Follow all requirements in Suppression Repair Guidelines.
 Repair and replace all identified suppression caused damage to improvements.

7. Special Instructions:
 All resources with 20000 series request numbers, your base camp will be at Redwood Acres Fairgrounds Eureka.
 After Operational Briefing, division breakouts will be at DP-80.
 *No Heavy Equipment at DP 40 (Vista Point)

8. Communications								
Name	Ch	Function	Rx Freq	Rx Tone	Tx Freq	Tx Tone	Mode	Notes
NIFC C1	1	COMMAND	170.9750	(T1) 110.9	168.7000	(T1) 110.9	A	HORSE MTN (NORTH)
VFIRE 25	11	TACTICAL	154.2875	(T6) 156.7	154.2875	(T6) 156.7	A	WEST
A/G CMD	13	A/G CMD	170.3125	0.0	170.3125	0.0	A	
CALCORD	15	MEDICAL	156.0750	(T6) 156.7	156.0750	(T6) 156.7	A	
AIRGUARD	16	EMERGENCY	168.6250	0.0	168.6250	(T1) 110.9	A	

9. Prepared by: Name: Ryan Toby (T) RESL
 Signature: *RYAN TOBY*
ICS 204 Date/Time: 7/27/2024 2200 Personnel Count: 27

ASSIGNMENT LIST (ICS 204 WF)

CONTROLLED UNCLASSIFIED INFORMATION//BASIC

1. Incident Name: HILL	2. Operational Period: Date From: 07/28/24 Date To: 07/29/24 Time From: 0700 Time To: 0700	3. Branch IV	Division STAGING
4. Operations Personnel:		Page 1 of 1	

Operations Section Chief: K. Williamson	Night Ops: J. Walter
Branch Director: BJ Imlach	Branch Safety: M. Lacy/W. Morgan (T)
Division/Group Supervisor: J. Tabush (12hr)	Air Attack:

5. Resources Assigned:		** Resources Below in Bold are 12 Hour **					
Resource Identifier	ALS	LWD	Leader	Personnel	Request #	Hours	Reporting Location
							DP-35

6. Work Assignments:
Monitor command and tactical frequencies.
Maintain 3-minute response time.
Maintain safe work area.

7. Special Instructions:
All resources with 20000 series request numbers, your base camp will be at Redwood Acres Fairgrounds Eureka.
After Operational Briefing, division breakouts will be at DP-35.
*No Heavy Equipment at DP 40 (Vista Point)

8. Communications								
Name	Ch	Function	Rx Freq	Rx Tone	Tx Freq	Tx Tone	Mode	Notes
NIFC C1	1	COMMAND	170.9750	(T1) 110.9	168.7000	(T1) 110.9	A	HORSE MTN (NORTH)
NIFC T5	8	TACTICAL	166.7750	(T1) 110.9	166.7750	(T1) 110.9	A	
A/G CMD	13	A/G CMD	170.3125	0.0	170.3125	0.0	A	
CALCORD	15	MEDICAL	156.0750	(T6) 156.7	156.0750	(T6) 156.7	A	
AIRGUARD	16	EMERGENCY	168.6250	0.0	168.6250	(T1) 110.9	A	

Prepared by: Name:	Ryan Toby (T)	RESL	Signature:	<i>RYAN TOBY</i>
ICS 204	Date/Time: 7/27/2024	2200	Personnel Count:	0

ASSIGNMENT LIST (ICS 204 WF)

CONTROLLED UNCLASSIFIED
INFORMATION//BASIC

1. Incident Name:	2. Operational Period:	3. Branch	Division
HILL	Date From: 07/28/24 Date To: 07/29/24 Time From: 0700 Time To: 0700	VIII	L
4. Operations Personnel:		Page 1 of 2	Lima

Operations Section Chief: K. Williamson	Night Ops: J. Walter
Branch Director: D. Pereira	Branch Safety:
Division/Group Supervisor: B. Good/M. Weston (T)	Air Attack: Branden Martin

5. Resources Assigned:	** Resources Below in Bold are 12 Hour **						
Resource Identifier	ALS	LWD	Leader	Personnel	Request #	Hours	Reporting Location
CRW1 AMERICAN RIVER IHC		7/31	RADACH	23	C-8	0700-1900	WILLOW CREEK ICP
CRW2 CREW-52		7/30	E. MURPHY	20	C-32	0700-1900	WILLOW CREEK ICP
SMOD SRF C-30		7/29	J. PHELAN	9	O-8	0700-1900	WILLOW CREEK ICP
ENG3 STF 332		8/1	S. RUSSEL	7	E-57	0700-1900	WILLOW CREEK ICP
ENG3 STF 343		8/1	P. GREEN	5	E-58	0700-1900	WILLOW CREEK ICP
ENG3 ENF 334		8/3	R. STYPA	5	E-181	0700-1900	WILLOW CREEK ICP
ENG3 TNF 333		8/4	B. BAKKER	4	E-182	0700-1900	WILLOW CREEK ICP
ENG3 LOS PINOS E88		8/2	D. DOUCLUFF	5	E-154	0700-1900	WILLOW CREEK ICP
ENG3 AVALON FIRE		7/28	L. LARSON	3	E-20	0700-1900	WILLOW CREEK ICP
ENG3 TEXAS 55		8/3	C. MAGANA	3	E-152	0700-1900	WILLOW CREEK ICP
ENG3 TEXAS 34		8/3	E. MAGANA	3	E-153	0700-1900	WILLOW CREEK ICP
ENG3 J3 62		7/31	L. STARK	3	E-175	0700-1900	WILLOW CREEK ICP
ENG3 OUTBACK		8/3	G. ALLRED	3	E-178	0700-1900	WILLOW CREEK ICP
WTS1 PVT BERRY		8/3	M. WAXLER	1	E-78	0700-1900	WILLOW CREEK ICP
WTT2 HAWKINS BAR 4142		7/28	K.WARD	2	E-90	0700-1900	WILLOW CREEK ICP
FMOD HOMELAND		7/31	L. QUINN	2	O-78	0700-1900	WILLOW CREEK ICP
FMOD NORTHZONE O-108		8/6		2	O-108	0700-1900	WILLOW CREEK ICP
FMOD NORTHZONE O-109		7/31	B. DE LAMBERT	2	O-109	0700-1900	WILLOW CREEK ICP

6. Work Assignments:
 Coordinate with DIV Z to strengthen the control line east of Sugarloaf Mountain.
 Patrol perimeter to identify and mitigate the potential for escape outside of established control lines.
 Identify and mitigate hazard trees.

7. Special Instructions:
 Identify equipment locations and caches on field maps.
 Access DP60/70 via 6N06 road of off Friday ridge to avoid congestion with Branch IV resources, utilize traffic plan.
 Back haul trash daily to avoid wildlife interaction.
 Coordinate with READ prior to heavy equipment operations.
 Only use metered fire hydrant on HWY 96 and staging for water filling.

8. Communications

Name	Ch	Function	Rx Freq	Rx Tone	Tx Freq	Tx Tone	Mode	Notes
NIFC C1	1	COMMAND	170.9750	(T1) 110.9	168.7000	(T1) 110.9	A	HORSE MTN (NORTH)
VFIRE 23	9	TACTICAL	154.2950	(T6) 156.7	154.2950	(T6) 156.7	A	
A/G CMD	13	A/G CMD	170.3125	0.0	170.3125	0.0	A	
CALCORD	15	MEDICAL	156.0750	(T6) 156.7	156.0750	(T6) 156.7	A	
AIRGUARD	16	EMERGENCY	168.6250	0.0	168.6250	(T1) 110.9	A	

9. Prepared by: Name: Ryan Toby (T) RESL
 Signature: *RYAN TOBY*
ICS 204 Date/Time: 7/27/2024 2200 Personnel Count: 102

ASSIGNMENT LIST (ICS 204 WF)

CONTROLLED UNCLASSIFIED
INFORMATION//BASIC

1. Incident Name:	2. Operational Period:	3. Branch	Division
HILL	Date From: 07/28/24 Date To: 07/29/24 Time From: 0700 Time To: 0700	VIII	L
4. Operations Personnel:		Page 2 of 2	Lima

Operations Section Chief: K. Williamson	Night Ops: J. Walter
Branch Director: D. Pereira	Branch Safety:
Division/Group Supervisor: B. Good/M. Weston (T)	Air Attack: Branden Martin

5. Resources Assigned:		** Resources Below in Bold are 12 Hour **					
Resource Identifier	ALS	LWD	Leader	Personnel	Request #	Hours	Reporting Location
FMOD NORTHZONE O-203		8/3	M. LEESR	2	O-203	0700-1900	WILLOW CREEK ICP
CHIP2 POMEROY		8/3	C. STRONG	3	E-62	0700-1900	WILLOW CREEK ICP
EMPF GUARCELLO	X	8/5	R. GUARCELLO	1	O-221	0700-1900	WILLOW CREEK ICP
EMTF TINKER	X	8/6	S. TINKER	1	O-223	0700-1900	WILLOW CREEK ICP
ARCH TRACY		8/4	M. TRACY	1	O-177	0700-1900	WILLOW CREEK ICP
ARCH(T) LAUGESEN		8/1	J. LAUGESEN	1	O-175	0700-1900	WILLOW CREEK ICP
REAF BURTON		8/4	W. BURTON	1	O-194	0700-1900	WILLOW CREEK ICP

6. Work Assignments:
 Coordinate with DIV Z to strengthen the control line east of Sugarloaf Mountain.
 Patrol perimeter to identify and mitigate the potential for escape outside of established control lines.
 Identify and mitigate hazard trees.

7. Special Instructions:
 Identify equipment locations and caches on field maps.
 Access DP60/70 via 6N06 road of off Friday ridge to avoid congestion with Branch IV resources, utilize traffic plan.
 Back haul trash daily to avoid wildlife interaction.
 Coordinate with READ prior to heavy equipment operations.
 Only use metered fire hydrant on HWY 96 and staging for water filling.

8. Communications								
Name	Ch	Function	Rx Freq	Rx Tone	Tx Freq	Tx Tone	Mode	Notes
NIFC C1	1	COMMAND	170.9750	(T1) 110.9	168.7000	(T1) 110.9	A	HORSE MTN (NORTH)
VFIRE 23	9	TACTICAL	154.2950	(T6) 156.7	154.2950	(T6) 156.7	A	
A/G CMD	13	A/G CMD	170.3125	0.0	170.3125	0.0	A	
CALCORD	15	MEDICAL	156.0750	(T6) 156.7	156.0750	(T6) 156.7	A	
AIRGUARD	16	EMERGENCY	168.6250	0.0	168.6250	(T1) 110.9	A	

9. Prepared by: Name: Ryan Toby (T) RESL
 Signature: Personnel Count: 10

Date/Time: 7/27/2024 2200

ASSIGNMENT LIST (ICS 204 WF)

CONTROLLED UNCLASSIFIED
INFORMATION//BASIC

1. Incident Name:	2. Operational Period:	3. Branch	Division
HILL	Date From: 07/28/24 Date To: 07/29/24 Time From: 0700 Time To: 0700	VIII	Z
4. Operations Personnel:		Page 1 of 1	Zulu

Operations Section Chief: K. Williamson	Night Ops: J. Walter
Branch Director: D. Pereira	Branch Safety:
Division/Group Supervisor: J. Mendes/B. Baker (T)	Air Attack: Branden Martin

5. Resources Assigned:	** Resources Below in Bold are 12 Hour **						
Resource Identifier	ALS	LWD	Leader	Personnel	Request #	Hours	Reporting Location
CRW1 SMITH RIVER IHC		7/29	D. DENLINGER	23	C-5	0700-1900	WILLOW CREEK ICP
ENG3 SRF 311		7/29	B. MCCULLOCH	5	E-85	0700-1900	WILLOW CREEK ICP
ENG3 SRF 333		7/30	S. MCCLURE	5	E-86	0700-1900	WILLOW CREEK ICP
ENG3 CASTLE MOUNTAIN		8/2	M. NOSIE	3	E-147	0700-1900	WILLOW CREEK ICP
ENG6 IDAHO TARGHEE 651		8/3	G. BIRCH	8	E-138	0700-1900	WILLOW CREEK ICP
ENG6 GREELEY BRUSH 6	X	8/2	B. BENTON	3	E-149	0700-1900	WILLOW CREEK ICP
WTT2 DENAIR 38		7/30	J. RAMIREZ	2	E-7	0700-1900	WILLOW CREEK ICP
WTT2 PVT 777		7/30	D.SWANSON	2	E-66	0700-1900	WILLOW CREEK ICP
WTS2 E-63		7/31	ADAMS	1	E-63	0700-1900	WILLOW CREEK ICP
FMOD REAPER FALLERS		8/2	B. BRODHUN	2	O-90	0700-1900	WILLOW CREEK ICP
FMOD TAYLOR FALLERS		8/5	C. TAYLOR	2	O-206	0700-1900	WILLOW CREEK ICP
TFLD BUNKER		8/4	J. BUNKER	1	O-213	0700-1900	WILLOW CREEK ICP
REMS 2 H.A.R.T MEDIC	X		R. ABERLE	2	O-57	0700-1900	WILLOW CREEK ICP
EMPF IHDE	X	8/5	B. IHDE	1	O-222	0700-1900	WILLOW CREEK ICP
EMPF(T) DONNER	X	8/4	C. DONNER	1	O-263	0700-1900	WILLOW CREEK ICP
AMBO 4	X	8/5	G. DUNN	2	E-169	0700-1900	WILLOW CREEK ICP

6. Work Assignments:
 Coordinate with DIV L to strengthen the control line east of Sugarloaf Mountain.
 Patrol perimeter to identify and mop-up, to prevent any escape outside of established control lines.
 Coordinate with DIV A in Mosquito Creek to strengthen control lines.
 Identify and mitigate hazard trees.

7. Special Instructions:
 Coordinate with READ prior to heavy equipment operations.
 Access DP60/70 via 6N06 road off of Friday ridge to avoid congestion with Branch IV resources, utilize traffic plan.

8. Communications								
Name	Ch	Function	Rx Freq	Rx Tone	Tx Freq	Tx Tone	Mode	Notes
NIFC C1	1	COMMAND	170.9750	(T1) 110.9	168.7000	(T1) 110.9	A	HORSE MTN (NORTH)
VFIRE 24	10	TACTICAL	154.2725	(T6) 156.7	154.2725	(T6) 156.7	A	
A/G CMD	13	A/G CMD	170.3125	0.0	170.3125	0.0	A	
CALCORD	15	MEDICAL	156.0750	(T6) 156.7	156.0750	(T6) 156.7	A	
AIRGUARD	16	EMERGENCY	168.6250	0.0	168.6250	(T1) 110.9	A	

9. Prepared by: Name: Ryan Toby (T) RESL
 Signature: RYAN TOBY
ICS 204 Date/Time: 7/27/2024 2200 Personnel Count: 63

ASSIGNMENT LIST (ICS 204 WF)

CONTROLLED UNCLASSIFIED
INFORMATION//BASIC

1. Incident Name: <p style="text-align: center; font-size: 1.2em;">HILL</p>	2. Operational Period: Date From: 07/28/24 Date To: 07/29/24 Time From: 0700 Time To: 0700	3. Branch Division <p style="text-align: center; font-size: 1.2em;">VIII EAST SUPPRESSION REPAIR</p>
---------------------------------------------------------------------------------------	---------------------------------------------------------------------------------------------------------------------------	----------------------------------------------------------------------------------------------------------------------------------------------------

Page 1 of 2

Operations Section Chief: K. Williamson	Night Ops: J. Walter
Branch Director: D. Pereira	Branch Safety:
Division/Group Supervisor: M. Carter/D. Guilliani (T)	Air Attack: Branden Martin

5. Resources Assigned:	** Resources Below in Bold are 12 Hour **							
Resource Identifier	ALS	LWD	Leader	Personnel	Request #	Hours	Reporting Location	
ENG3 PIERCE FIRE 32		8/6	E. PAUL	5	E-145	0700-1900	WILLOW CREEK ICP	
DOZ2 SHF 79		7/29	J. HERNANDEZ	2	E-1	0700-1900	WILLOW CREEK ICP	
DOZ2 PVT E-2		7/30	J. WILLBURN	2	E-2	0700-1900	WILLOW CREEK ICP	
DOZ2 PVT E-35		7/30	D. GRIDER	2	E-35	0700-1900	WILLOW CREEK ICP	
DOZ3 SMOKY MNT		8/5	J. BAGLEY	2	E-109	0700-1900	WILLOW CREEK ICP	
DOZ3 PVT DREW		8/3	K. DREW	2	E-111	0700-1900	WILLOW CREEK ICP	
FMOD UNDERDOG		8/4	J. MCMILLEN	2	O-205	0700-1900	WILLOW CREEK ICP	
MAST2 PVT COLEMAN		8/2	J. COLEMAN	2	E-120	0700-1900	WILLOW CREEK ICP	
MAST2 GROTEGUTH		8/5	J. GROTEGUTH	2	E-121	0700-1900	WILLOW CREEK ICP	
MAST2 PVT BRAUN		8/3	M. BRAUN	2	E-123	0700-1900	WILLOW CREEK ICP	
MAST2 PVT HART		8/2	C. SEABOURN	2	E-124	0700-1900	WILLOW CREEK ICP	
SKD1 PVT DARRAH		8/2	T. BANGHART	2	E-114	0700-1900	WILLOW CREEK ICP	
HEQB JIMENEZ		8/4	J. JIMENEZ	1	O-161	0700-1900	WILLOW CREEK ICP	
HEQB GOLDSMITH		8/5	C. GOLDSMITH	1	O-200	0700-1900	WILLOW CREEK ICP	
HECB(t) BOUCHONVILLE		8/5	A. BOUCHONVILLE	1	O-158	0700-1900	WILLOW CREEK ICP	
HEQB(T) WARREN		8/10	T. WARREN	1	O-272	0700-1900	WILLOW CREEK ICP	
EMPF HOUGHTON	X	8/8	M. HOUGHTON	1	O-260	0700-1900	WILLOW CREEK ICP	
EMTF(T) FISHER		8/8	W. FISHER	1	O-262	0700-1900	WILLOW CREEK ICP	

6. Work Assignments:
Coordinate with Lead READ to identify areas to repair, following the suppression repair plan

7. Special Instructions:
Coordinate with READ prior to heavy equipment operations.

8. Communications								
Name	Ch	Function	Rx Freq	Rx Tone	Tx Freq	Tx Tone	Mode	Notes
NIFC C1	1	COMMAND	170.9750	(T1) 110.9	168.7000	(T1) 110.9	A	HORSE MTN (NORTH)
VFIRE 26	12	TACTICAL	154.3025	(T6) 156.7	154.3025	(T6) 156.7	A	EAST
A/G CMD	13	A/G CMD	170.3125	0.0	170.3125	0.0	A	
CALCORD	15	MEDICAL	156.0750	(T6) 156.7	156.0750	(T6) 156.7	A	
AIRGUARD	16	EMERGENCY	168.6250	0.0	168.6250	(T1) 110.9	A	

9. Prepared by: Name: Ryan Toby (T) RESL Signature: *RYAN TOBY*

ICS 204 Date/Time: 7/27/2024 2200 Personnel Count: 33

ASSIGNMENT LIST (ICS 204 WF)

CONTROLLED UNCLASSIFIED
INFORMATION//BASIC

1. Incident Name: <p style="text-align: center;">HILL</p>	2. Operational Period: Date From: 07/28/24 Date To: 07/29/24 Time From: 0700 Time To: 0700	3. Branch Division <p style="text-align: center;">VIII EAST SUPPRESSION REPAIR</p>
4. Operations Personnel:		Page 2 of 2

Operations Section Chief: K. Williamson	Night Ops: J. Walter
Branch Director: D. Pereira	Branch Safety:
Division/Group Supervisor: M. Carter/D. Guilliani (T)	Air Attack: Branden Martin

5. Resources Assigned:		** Resources Below in Bold are 12 Hour **					
Resource Identifier	ALS	LWD	Leader	Personnel	Request #	Hours	Reporting Location
AMBO 1	X	7/30	C. GARICA	2	E-47	0700-1900	WILLOW CREEK ICP
ARCH PADIAN		7/30	M. PADIAN	1	O-131	0700-1900	WILLOW CREEK ICP
ARCH HUTCHESON		8/5	C. HUTCHESON	1	O-178	0700-1900	WILLOW CREEK ICP
ARCH NEZ		8/2	J. NEZ	1	O-246	0700-1900	WILLOW CREEK ICP
ARCH WESTFAHL		8/2	S. WESTFAHL	1	O-250	0700-1900	WILLOW CREEK ICP
READ SYLVIA		8/2	C. SYLVIA	1	O-190	0700-1900	WILLOW CREEK ICP
READ AUBREY		8/2	B. AUBREY	1	O-191	0700-1900	WILLOW CREEK ICP

6. Work Assignments:
Coordinate with Lead READ to identify areas to repair, following the suppression repair plan

7. Special Instructions:
Coordinate with READ prior to heavy equipment operations.

8. Communications								
Name	Ch	Function	Rx Freq	Rx Tone	Tx Freq	Tx Tone	Mode	Notes
NIFC C1	1	COMMAND	170.9750	(T1) 110.9	168.7000	(T1) 110.9	A	HORSE MTN (NORTH)
VFIRE 26	12	TACTICAL	154.3025	(T6) 156.7	154.3025	(T6) 156.7	A	EAST
A/G CMD	13	A/G CMD	170.3125	0.0	170.3125	0.0	A	
CALCORD	15	MEDICAL	156.0750	(T6) 156.7	156.0750	(T6) 156.7	A	
AIRGUARD	16	EMERGENCY	168.6250	0.0	168.6250	(T1) 110.9	A	

9. Prepared by: Name: Ryan Toby (T) RESL Signature: *RYAN TOBY*
ICS 204 Date/Time: 7/27/2024 2200 Personnel Count: 8

ASSIGNMENT LIST (ICS 204 WF)

CONTROLLED UNCLASSIFIED
INFORMATION//BASIC

1. Incident Name:	2. Operational Period:	3. Branch	Division
HILL	Date From: 07/28/24 Date To: 07/29/24 Time From: 0700 Time To: 0700	VIII	NIGHT L/Z
4. Operations Personnel:		Page 1 of 1	

Operations Section Chief: K. Williamson	Night Ops: J. Walter
Branch Director: D. Pereira	Branch Safety:
Division/Group Supervisor: D. Pearsall/L. Aspelin	Air Attack: Branden Martin

5. Resources Assigned:		** Resources Below in Bold are 12 Hour **					
Resource Identifier	ALS	LWD	Leader	Personnel	Request #	Hours	Reporting Location
WFM2 SIX RIVERS		7/29	B. PETERSON	12	O-7	1900-0700	WILLOW CREEK ICP
ENG3 SRF 322		7/28	K. FEARS	5	E-84	1900-0700	WILLOW CREEK ICP
ENG3 AZ HELLSGATE		8/4	J. YUNGKNAS	4	E-150	1900-0700	WILLOW CREEK ICP
ENG3 J3 56		7/31	E. WEST	3	E-174	1900-0700	WILLOW CREEK ICP
ENG3 DUKE CITY FIRE		8/5	C. ALKE	3	E-185	1900-0700	WILLOW CREEK ICP
ENG4 CAPAA 4441		8/2		3	E-56	1900-0700	WILLOW CREEK ICP
ENG4 BOISE FIRE		8/2	N. CAPLE	4	E-151	1900-0700	WILLOW CREEK ICP
ENG6 INDIANA HOOSIER NF		8/4	S. HARRISS	1	E-201	1900-0700	WILLOW CREEK ICP
ENG6 FIRESTORM 9902		7/28	T. BROWN	3	E-17	1900-0700	WILLOW CREEK ICP
ENG6 CAYIA 9462		7/30	A. LAMEBEAR		E-55	1900-0700	WILLOW CREEK ICP
ENG6 FLAME CHASER		8/4	E. HALL	3	E-140	1900-0700	WILLOW CREEK ICP
ENG6 MERVIN BISHOP		8/3	E. JOHNSON	3	E-148	1900-0700	WILLOW CREEK ICP
WTS1 NORTHSTATE		8/1		1	E-73	1900-0700	WILLOW CREEK ICP
WTT2 CENTRAL VALLEY		7/31	J. NEVINS	3	E-64	1900-0700	WILLOW CREEK ICP
REMS 5	X	8/5	S.LEWIS	4	O-225	1900-0700	WILLOW CREEK ICP
AMBO 7	X	8/3	J. EYERLY	2	E-192	1900-0700	WILLOW CREEK ICP

6. Work Assignments:
Patrol perimeter to identify and mop-up, to prevent any escape outside of established control lines.

7. Special Instructions:
Only use metered fire hydrant on HWY 96 and staging for water filling.

8. Communications								
Name	Ch	Function	Rx Freq	Rx Tone	Tx Freq	Tx Tone	Mode	Notes
NIFC C1	1	COMMAND	170.9750	(T1) 110.9	168.7000	(T1) 110.9	A	HORSE MTN (NORTH)
VFIRE 23	9	TACTICAL	154.2950	(T6) 156.7	154.2950	(T6) 156.7	A	
A/G CMD	13	A/G CMD	170.3125	0.0	170.3125	0.0	A	
CALCORD	15	MEDICAL	156.0750	(T6) 156.7	156.0750	(T6) 156.7	A	
AIRGUARD	16	EMERGENCY	168.6250	0.0	168.6250	(T1) 110.9	A	

9. Prepared by: Name:	Ryan Toby (T)	RESL	Signature:
ICS 204	Date/Time: 7/27/2024 2200	Personnel Count: 54	

AIR OPERATIONS SUMMARY ICS-220

Incident Name and Incident Number HILL CASRF000586		Sunrise 607	Startup 637	Cutoff 2009	Sunset 2039	Time Prepared 1900	Date Prepared Saturday, July 27, 2024	Prepared By Paul Karpus
General Remarks, Safety Notes, Hazards, Air Operations Special Equipment, etc. TRACK ALL DIPSITE LOCATIONS / NUMBER OF DIPS / GALLONS TAKEN. TRACK ALL DROP LOCATIONS / NUMBER OF DROPS / GALLONS DROPPED ALL GPS DATA TO BE COLLECTED IN DEGREES, MINUTES, DECIMAL MINUTES, FORMAT. AVOID Aerial Application of Retardant / Foam / Agent within 300' of Waterways, Bodies of Water, etc. If Retardant / Foam / Agent is Dropped Within These Areas Immediately Notify the AOB and Provide the Following Information: Lat / Long, Estimated Number of Gallons and a Map Detailing The Area.		Shutdown 2110		Operational Period - Date Sunday, July 28, 2024		Operational Period - Time 0800-0800		
Helibase Information Name Weaverville (O-54) Latitude 40.44.833 Longitude 122.55.341 Name Willow Creek (WC) Latitude 40.56.881 Longitude 123.38.070 (use page 2 if needed)		Helibase Information Name Weaverville (O-54) Latitude 40.44.833 Longitude 122.55.341		TFR Information Request # A-27 Radius: 7 NM Altitude: 10000' MSL Centerpoint: 40 46.000 Lat 123 38.30 Long NOTAMS: 4/3448 Frequency 120.0250 http://tfr.faa.gov/tfr2/list.html		Rescue Ship Information Day 3SH Name Paul Karpus Phone 805-204-8472 Make/Model AS350B3 Location Willow Creek Request Procedure for These Aircraft: Place Order to Communications See Medical Plan For Additional Info		

Frequencies	RX	Tone	TX	Tone	AM / FM	Position	Name	Phone	Traine Name	Phone
AIR TACTICS	167.0625		167.0625		FM	AOBD	Galen Young	575-574-8720		
AIR / AIR Rotary Wing	124.0250		124.0250		AM	AOBD	Paul Karpus	(916) 862-3567		
AIR / AIR - Briefing	120.0250		120.0250		AM	ASGS	Kent Wedin	575-538-1075		
AIR / GROUND - Command	170.3125		170.3125		FM	ASGS	Josh Faulkner	530-356-1351		
AIR / GROUND - Tactical	169.1000		169.1000		FM	HEBM	Chris Clowar	760-419-7926		
COMMAND	170.9750	110.9	168.7000	110.9	FM	HEBM	Branden Martin (Willow CRK)	530-927-7336	Steve Ocampo	805-204-8472
TOLC	135.2250		135.2250		AM	HICO	Rudy Yniguez	530-515-4440		
DECK	163.1000		163.1000		FM					
CALCORD - MEDICAL	156.0750	156.7 (6)	156.0750	156.7 (6)	FM					
AIRGUARD - Emergency Only	168.6250	110.9 (1)	168.6250	110.9 (1)	FM					

HELICOPTERS WEAVERVILLE (O-54) HELIBASE													
FAA #	Type	Make/Model	Helibase	Avail	Start	Remarks	FAA #	Type	Make/Model	Helibase	Avail	Start	Remarks
674TH	1	KMAX	WC	800	800	A-32 LL/Bucket	3HT	1	CH-54	O-54	800	800	A-20014 TANK
7KA	1	KMAX	WC	800	800	A-99 LL/Bucket							
506	2	B212	WC	800	800	A-104/Bucket/LL/Crew							
512	2	205++	WC	800	800	A-100/Bucket/LL/Crew							
3SH	3	AS350B3	WC	800	800	A-97 Shorthaul	4TV	3	AS350B2	O-54	800	800	A-107 HICO

UAS MODULES										
REQUEST #	LOCATION	REQUEST #	LOCATION	REQUEST #	LOCATION					
UR31	ISRP/PSD	WC	800	800	James Sweeney (352) 328-7654					

WATER TENDERS								
REQUEST #	LOCATION	REQUEST #	LOCATION	Name	Latitude	Longitude	Manager	CONTACT #
E-38	WILLOW CRK HB							
E-20064	WEAVERVILLE HB							


ICS 205 - INCIDENT RADIO COMMUNICATIONS PLAN

1. Incident Name: HILL	2. Date/Time Prepared Date: 07/27/2024 Time: 1930	3. Operational Period: Date To: 07/29/25 Time To: 0700
Incident Channels		

4. Communications											
Ch#	Function	Name	Assigned To	Rx Freq	Rx Tone	Tx Freq	Tx Tone	Mode	Notes		
1	COMMAND	NIFC C1	ALL DIVS	170.9750	(T1) 110.9	168.7000	(T1) 110.9	A	HORSE MTN (NORTH)		
2	COMMAND	NIFC C6	ALL DIVS	168.4750	(T1) 110.9	165.4000	(T1) 110.9	A	LAST CHANCE RIDGE (SOUTH)		
3	COMMAND	NIFC C9	ALL DIVS	170.0125	(T1) 110.9	165.2500	(T1) 110.9	A	BRUSH MTN (NORTH)		
4											
5	COMMAND	NIFC C28	ALL DIVS	173.9875	(T1) 110.9	171.8375	(T1) 110.9	A	IRONSIDE MTN (EAST)		
6	TACTICAL	NIFC T1	DIV A	168.0500	(T1) 110.9	168.0500	(T1) 110.9	A			
7	TACTICAL	NIFC T4	DIV C/D	166.7250	(T1) 110.9	166.7250	(T1) 110.9	A			
8	TACTICAL	NIFC T5	STAGING	166.7750	(T1) 110.9	166.7750	(T1) 110.9	A			
9	TACTICAL	VFIRE 23	DIV L / NIGHT L/Z	154.2950	(T6) 156.7	154.2950	(T6) 156.7	A			
10	TACTICAL	VFIRE 24	DIV Z	154.2725	(T6) 156.7	154.2725	(T6) 156.7	A			
11	TACTICAL	VFIRE 25	WEST SUPPRESSION REPAIR	154.2875	(T6) 156.7	154.2875	(T6) 156.7	A	WEST		
12	TACTICAL	VFIRE 26	EAST SUPPRESSION REPAIR	154.3025	(T6) 156.7	154.3025	(T6) 156.7	A	EAST		
13	A/G CMD	A/G CMD	ALL DIVS	170.3125	0.0	170.3125	0.0	A			
14	A/G TAC	A/G TAC	ALL DIVS	169.1000	0.0	169.1000	0.0	A			
15	MEDICAL	CALCORD	ALL DIVS	156.0750	(T6) 156.7	156.0750	(T6) 156.7	A	MEDICAL COORDINATION		
16	EMERGENCY	AIRGUARD	ALL DIVS	168.6250	0.0	168.6250	(T1) 110.9	A	EMERGENCY USE ONLY		
17											
18											
19											
20	EMERGENCY	AIRGUARD	ALL DIVS	168.6250	0.0	168.6250	(T1) 110.9	A	EMERGENCY USE ONLY		

5. Special Instructions

YOU MUST GET YOUR RADIO CLONED TO COMMUNICATE EFFECTIVELY. HILL COMMUNICATIONS (916) 883-0935

6. Prepared by (Communications Unit Leader): Name: TIM MAGUIRE	Signature: 
ICS 205 - CONTROLLED UNCLASSIFIED INFORMATION/BASIC	NIMS IAP Date/Time: 07/28/24 1930

ICS 205 - INCIDENT RADIO COMMUNICATIONS PLAN

CONTROLLED UNCLASSIFIED INFORMATION//BASIC

1. Incident Name: HILL Page 2	2. Date/Time Prepared Date: 07/27/2024 Time: 1930	3. Operational Period: Date From: 07/28/24 Time From: 0700 Date To: Time To: 0700
--------------------------------------------	----------------------------------------------------------------	------------------------------------------------------------------------------------------------------

4. Communications									
Ch#	Function	Name	Assigned To	Rx Freq	Rx Tone	Tx Freq	Tx Tone	Mode	Notes
1	COMMAND	SRF	I/A	172.3750	0.0	164.1750	OST	A	"NORTH COAST" COMMAND CENTER
2	COMMAND	SHF	I/A	171.5750	0.0	165.0125	OST	A	"REDDING" COMMAND CENTER
3	TACTICAL	R5 T4	I/A	166.5500	0.0	166.5500	0.0	A	
4	TACTICAL	R5 T5	I/A	167.1125	0.0	167.1125	0.0	A	
5	TACTICAL	R5 T6	I/A	168.2375	0.0	168.2375	0.0	A	
6	A/G TAC	A/G 43	I/A	167.6000	0.0	167.6000	0.0	A	FOREST I/A PRIMARY
7	A/G TAC	A/G 08	I/A	166.8750	0.0	166.8750	0.0	A	FOREST I/A SECONDARY
8	A/G CMD	HILL AGC	HILL A/G CMD	170.3125	0.0	170.3125	0.0	A	HILL A/G COMMAND
9	A/G TAC	HILL AGT	HILL A/G TAC	169.1000	0.0	169.1000	0.0	A	HILL A/G TACTICAL
10	COMMAND	HUU L	I/A	151.2500	(T1) 110.9	159.4050	OST	A	"FORTUNA" COMMAND CENTER
11	TACTICAL	CDF T3	I/A	151.1750	(T16) 192.8	151.1750	(T16) 192.8	A	
12	TACTICAL	CDF T7	I/A	151.3400	(T16) 192.8	151.3400	(T16) 192.8	A	
13	TACTICAL	CDF T10	I/A	151.4000	(T16) 192.8	151.4000	(T16) 192.8	A	
14	A/G TAC	CDF A/G 3	I/A	159.3675	(T16) 192.8	159.3675	(T16) 192.8	A	
15	MEDICAL	CALCORD		156.0750	(T6) 156.7	156.0750	(T6) 156.7	A	MEDICAL COORDINATION
16	EMERGENCY	AIRGUARD		168.6250	0.0	168.6250	(T1) 110.9	A	EMERGENCY USE ONLY
17									
18									
19									
20	EMERGENCY	AIRGUARD		168.6250	0.0	168.6250	(T1) 110.9	A	EMERGENCY USE ONLY

5. Special Instructions
 YOU MUST GET YOUR RADIO CLONED TO COMMUNICATE EFFECTIVELY. HILL COMMUNICATIONS (916) 883-0935

6. Prepared by (Communications Unit Leader): Name: TIM MAGUIRE Signature: 	NIMS IAP Date/Time: 07/27/24 1930
-------------------------------------------------------------------------------------------------------------------------------------------------------------------------	-----------------------------------------

WILLOW CREEK CAMP DMOB LIST FOR 7/28/2024

<u>REQUEST #</u>	<u>RESOURCE ID</u>	<u>REPORT TO DMOB</u>
E-180	ENG6 S/T OES 2861F	0830
E-16	ENG3 – Firestorm INC. C57	0830
E-26	ENG6 – Para Corp Medical INC.	0830
E-29	ENG4 - IDAHO TRAILBLAZERS LLC	0830
O-3	Gundle, Colin J	0845
E-27	ENG6 – Loomis Fire Control	0845
E-144	ENG6 - NORWOOD FPD 24 E9	0900
E-143	ENG6 - WYFRX UNIT 142	0900
E-31	ENG6 – Independent Log Co.	0900
E-36	DOZ2 – Smokey Mountain	0900
E-136	ENG6 - CLEARWATER FIRE SUPPORT LLC	1000
E-107	DZR2 - MOBLEY CONSTRUCTION	1000
E-115	SKD2 - CECIL LOGGING, INC.	1000
O-204	FMOD - RED FLAG FIRE PROTECTION LLC	1000
E-33	DZR2 - J W MORRISON, INC	1015
E-34	DZR2 - J W MORRISON, INC	1015
E-116	SKD1 - BOB W BUSHEY	1015

TENTATIVE RELEASE FOR 7/29/2024

<u>REQUEST #</u>	<u>RESOURCE ID</u>	<u>REPORT TO DMOB</u>
E-17	ENG6 – Firestorm INC. C08	0845
E-20	ENG3 – Avalon Fire Services	0845

TENTATIVE RELEASE FOR 7/30/2024

<u>REQUEST #</u>	<u>RESOURCE ID</u>	<u>REPORT TO DMOB</u>
O-184	THSP – Holder, Amara Lee	0830
O-15	ICT3 – Mendes, Rodney	0845
O-21	OPS3 – Manago, Matthew A	0845
O-7	WFM2 – Six Rivers WFM	0845
O-8	SMOD – Lone Pine C-30	0845
O-47.27	DIVS – Carter, Mike J	0900
E-85	ENG3 – CASRF E333	0900
E-1	DOZ2 – CASHHF D79	0900
C-5	CWR1 – Smith River IHC	0900

Demobilization Message - July 28th, 2024

WILLOW CREEK BASE CAMP

ALL FEDERAL RESOURCES

If you require **AIR TRAVEL** back to your home unit, please stop by the DMOB office located at WILLOW CREEK Base Camp **Seventy-Two (72)** Hours prior to your DMOB DATE.

This will ensure the Travel Agent has plenty of time to secure you a flight.

If you are listed on the DMOB LIST stop by the DMOB to begin the process at your assigned date and time.

Ensure to turn in your CRT's or Shift Tickets to the Finance Section Daily!

Contractors & Vipers only need to take their yellow inspection form with Hours & Miles to ground support, you do not need to take the equipment.

Respectfully,

Ryan Da Rosa - DMOB(T)

(919) 903-2066

EUREKA BASE CAMP

- **Please DO NOT report to Demob before your scheduled time.**
- The Demob Unit will provide you with an ICS-221 check-out form which may require the following signatures:
 - ✓ SUPPLY UNIT
 - ✓ COMMUNICATIONS UNIT
 - ✓ GROUND SUPPORT/VEHICLE INSPECTION***
 - ✓ DOCUMENTATION UNIT
 - ✓ TIME UNIT
 - ✓ TRAINING UNIT
 - ✓ ACCOMMODATION

*****Vehicle Inspection:**

- You must have the ICS-221 Demob form with you at vehicle inspection.
- A Vehicle Inspection time will be provided when you initially arrive to the Demobilization Unit.
- **DO NOT REPORT FOR VEHICLE INSPECTION PRIOR TO YOUR APPOINTMENT.**

Federal Finance Message

Please submit your time to

2024.hill.finance@firenet.gov

If you need assistance with electronic submission, please reach out to our Finance personnel at briefing- we're here to assist those in need

- FOR CTR SUBMISSION, PLEASE PUT CTR and RO# IN SUBJECT LINE OF EMAIL.
- FOR SHIFT TICKETS, PLEASE PUT ST AND RO# IN SUBJECT LINE OF EMAIL.
- IF TURNING IN FINAL CTR OR SHIFT TICKET, PLEASE ALSO PUT FINAL IN SUBJECT LINE.
- PLEASE MAKE EVERY EFFORT TO TURN IN ALL CTR's AND SHIFT TICKETS DAILY.
- PLEASE INCLUDE YOUR RESOURCE ORDER # ON ALL DOCUMENTATION SUBMITTED, INCLUDING RECEIPTS.
- AUTO RESPONSE IS SET UP TO LET YOU KNOW THAT DOCUMENTS WERE RECEIVED.
- FOR DEMOB: Finance will email the Draft OF-288 or OF-286 to the employee for their review and approval. If everything is correct, Finance will reply with FINAL OF-288/OF-286.

FINANCE CHECK IN:

- PLEASE ENSURE THE BELOW DOCUMENTS ARE EMAILED TO FINANCE WITH RESOURCE ORDER NUMBER NOTED:

Agency Equipment/Crews:	Overhead:	Contract Equipment/Contract Crews:	Cooperator:
<ul style="list-style-type: none">• Manifest• Resource Order• CTR's	<ul style="list-style-type: none">• Resource Order• AD Hire Form (If an AD)• CTR's	<ul style="list-style-type: none">• Agreement/Manifest• Resource Order• Shift Ticket• Inspection Forms	<ul style="list-style-type: none">• Cooperative Agreement• Resource Order• Shift Ticket• Inspection Forms

PLEASE SEE FINANCE

E-75 Action Sanitary
E-189/190/191 Pine Rim Enterprises
E-115 Cecil Logging
C-32 Crew 52

Shift Ticket Example

EMERGENCY SHIFT TICKET and EVALUATION FORM					Contractor Name	
The responsible Government Officer will complete this form each shift					Fireline Builders	
Incident or Project Name HILL		Incident Number CA-SRF-000586	Request Number E # Here		Operator #1 Bob Smith	Operator #2 Jeff Smith
Agreement Number Obtain from suppliers agreement					Operator Furnished By: <input checked="" type="checkbox"/> Contractor <input type="checkbox"/> Government	
Equipment Make CAT		Equipment Model / Type D6N, Type II E			Operating Supplies Furnished By: <input checked="" type="checkbox"/> Contractor <input type="checkbox"/> Government	
Serial Number 6LN3344		Licence Number			Equipment Status <input checked="" type="checkbox"/> Inspected <input checked="" type="checkbox"/> Under Agreement	
Equipment Use					Released by Government <input type="checkbox"/>	
(Circle) Hours / Days / Miles					Withdrawn by Contractor <input type="checkbox"/>	
Date Mo / Day	Start	Stop	Work	Assignment		
7/15	0700	2400	17	Division B		
7/16	0001	0700	7	Division B		
					Remarks/Comments ** NO DAMAGE / NO CLAIMS	
Vendor Rating					Govt. Rep. Name and Position - PRINT Mike Weber Div. A	
Poor* Avg. Good Exc. N/A					Govt. Rep. Signature <i>Mike Weber</i>	
Met Performance Expectations					Contractor Signature <i>Bob Smith</i>	
Equipment in Safe Working Condition					Date 07/16/24	
Operator Skill Level					Time 0700	
Operates Safely					CALFIRE 297	
Operator's Cooperation Level					(Rev 3-2011)	
Overall Performance						
* NOTE: Any rating of POOR requires an explanation in Comment Section.						
**Final evaluation or for more documentation, use an ICS Form 230 or equivalent.						
Pink - Finance		Blue - Home Unit HE Coordinator		Yellow - Vendor		White - Govt Representative

EMERGENCY SHIFT TICKET and EVALUATION FORM					Contractor Name	
The responsible Government Officer will complete this form each shift					Fireline Builders	
Incident or Project Name HILL		Incident Number CA-SRF-000586	Request Number E # Here		Operator #1 Bob Smith	Operator #2
Agreement Number Obtain from suppliers agreement					Operator Furnished By: <input checked="" type="checkbox"/> Contractor <input type="checkbox"/> Government	
Equipment Make CAT		Equipment Model / Type D6N, Type II E			Operating Supplies Furnished By: <input checked="" type="checkbox"/> Contractor <input type="checkbox"/> Government	
Serial Number 6LN3344		Licence Number			Equipment Status <input checked="" type="checkbox"/> Inspected <input checked="" type="checkbox"/> Under Agreement	
Equipment Use					Released by Government <input type="checkbox"/>	
(Circle) Hours / Days / Miles					Withdrawn by Contractor <input type="checkbox"/>	
Date Mo / Day	Start	Stop	Work	Assignment		
7/16	0700	1900	12	Division B		
					Remarks/Comments ** NO DAMAGE / NO CLAIMS	
Vendor Rating					Govt. Rep. Name and Position - PRINT Mike Weber Div. A	
Poor* Avg. Good Exc. N/A					Govt. Rep. Signature <i>Mike Weber</i>	
Met Performance Expectations					Contractor Signature <i>Bob Smith</i>	
Equipment in Safe Working Condition					Date 07/16/24	
Operator Skill Level					Time 1900	
Operates Safely					CALFIRE 297	
Operator's Cooperation Level					(Rev 3-2011)	
Overall Performance						
* NOTE: Any rating of POOR requires an explanation in Comment Section.						
**Final evaluation or for more documentation, use an ICS Form 230 or equivalent.						
Pink - Finance		Blue - Home Unit HE Coordinator		Yellow - Vendor		White - Govt Representative

Ryan Wakefield

Cal OES Asst. Chief
Region II - North



OES Resource Check In QR Code





It was
CHARACTER
 that got us out of bed,
COMMITMENT
 that moved us into action, &
DISCIPLINE
 that enabled us to follow
 through
 --Zig Ziglar

HRSP Diane Taliaferro 505-377-1494

Union Representatives:

Primary: Denice Edgar, NFFE Local 1865 Steward, denice.edgar@usda.gov, 530-598-4170

Secondary: Justin Brown, NFFE-FSCR5 Council VP, justin.i.brown@usda.gov, 530-250-5551



HILL INCIDENT PEER SUPPORT:



RESOURCES

Peer Support is available to all personnel on the HILL incident.

Examples of peer support needs are, but not limited to, understanding stress reactions, dealing with traumatic experiences, professional or personal crisis, other behavioral health impacts and/or obtain vetted resiliency resources.

The best way to contact HILL incident Peer Support is to call the number below.

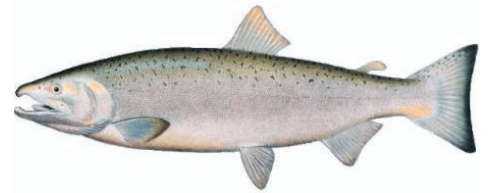
916-445-4337 – CAL FIRE ESS Helpline 24/7
 707-499-2955 – Local Peer Support

Stay Healthy, Stay Alert and Stay Strong!

Hill Fire: Resource Advisor Message

Fish Screens: Coho Salmon Critical Habitat

The Trinity River and tributaries are considered critical habitat for Threatened Coho salmon, an anadromous fish (fish born in freshwater who spend most of their lives in saltwater and return to freshwater to spawn). Please ensure that any Mark 3 and Engine/Tender suction hoses have a fish screen attached when drafting. Fish screens are designed to minimize stress, injury or even death during the drawing and application process. Talk to a READ if you need a screen.

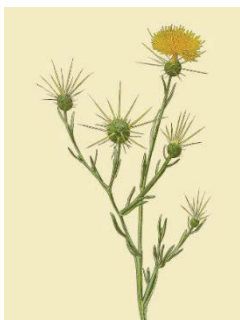


Port Orford Cedar Root Disease

Some local drainages are infected with POC Root disease, which is a root rotting disease that spreads via water and mud. Infested waters near the fire perimeter include: the main stem of Willow Creek and small creeks to the north up to Hoopa, south side of Willow Creek (includes area in **Boise Creek Campground**) in East Fork of Willow Creek (includes area in **East Fork Campground**) and in most of the tributaries. **DO NOT DRAFT from East Fork Campground OR Boise Creek Campground.**

IMPORTANT: Yellow/White Candy-Striped flagging is being used for cultural/natural resource protection. Flagging indicates equipment exclusion areas.

- **Invasive Plant Species**



The area in and around the Hill Fire is home to many sensitive species. Infestations of highly invasive plant species, like yellow star thistle, are one of the largest threats to sensitive species populations here. Spread via vehicles and foot traffic as well as re-activation via fire is of high concern. To help protect these sensitive places, do not park in and try to avoid areas flagged areas.

- **Cultural Resources:**

There is a potential that undocumented cultural resources will be encountered while fighting fire. It is important when a potential cultural resource is encountered it is not disturbed in any manner. Work with your division to notify a resource advisor for recommendations on how to proceed.



FIRE INFORMATION



If you would like to share any photos or videos, please send them to 2024.Hill@firenet.gov or airdrop your digital images to a Public Information Officer.

Please provide who took the picture so we can give photo credit to the photographer 😊

Remember for your personal social media platforms, pause before you post. Does your photo have the following;

- **fireline personnel not wearing full PPE**
- **identifiable structures (ie. addresses)**
- **burning / burned structures**
- **inmate crews**
- **faces of children**
- **accident or investigation scenes**
- **sensitive natural or cultural resources (or QR codes to maps that identify them)**
- **whiteboards / flipcharts with passwords or internal contacts listed**
- **license plates**

If you are contacted by any public who needs assistance, please have them call 530-414-9056 which is supported 8am to 7pm.

TRAINING SPECIALIST MESSAGE

Willow Creek Basecamp

The Training Specialist is working remotely. Training Specialist

Contact Information:

- Emil Picchi
- Call/Text: 650.520.5102 (Available 0600 and 2200)
- Email: TNSPEP@gmail.com

How to register as a Trainee:

1. Use the QR code to the right.
If you're unable to register using the QR code please call.
2. Once registered, you will receive text and email updates.

Registration



How to close-out your training assignment:

1. **Trainer:** Complete the Evaluation Record in the back of the Position Task Book and make as many entries as possible within the individual tasks. Discuss this with your Trainee.
2. **Trainer:** Complete an individual performance rating (ICS 225) and go over the performance rating with your Trainee.
3. **Trainee:** Text or email a photo of your individual performance rating (ICS 225) to the Training Specialist.
4. **Trainee:** Complete the exit questions using the QR code on right.
5. **Trainee:** Once 1-4 are completed, the Trainee and the Training Specialist will have a brief conversation to discuss the Task Book and assignment.

Exit Questions



Done: except for safe travels home!

EUREKA BASECAMP

TRAINEES:

Beat the Rush!!

In order to receive documented credit for your training assignment, you **MUST** close out with the Training Specialist before you Demob. When as much work (as possible) has been completed in your PTB for this incident, conduct the "close-out" process w/ the TNSP to save you time at DMOB

Bring the following to the "Exit Interview"

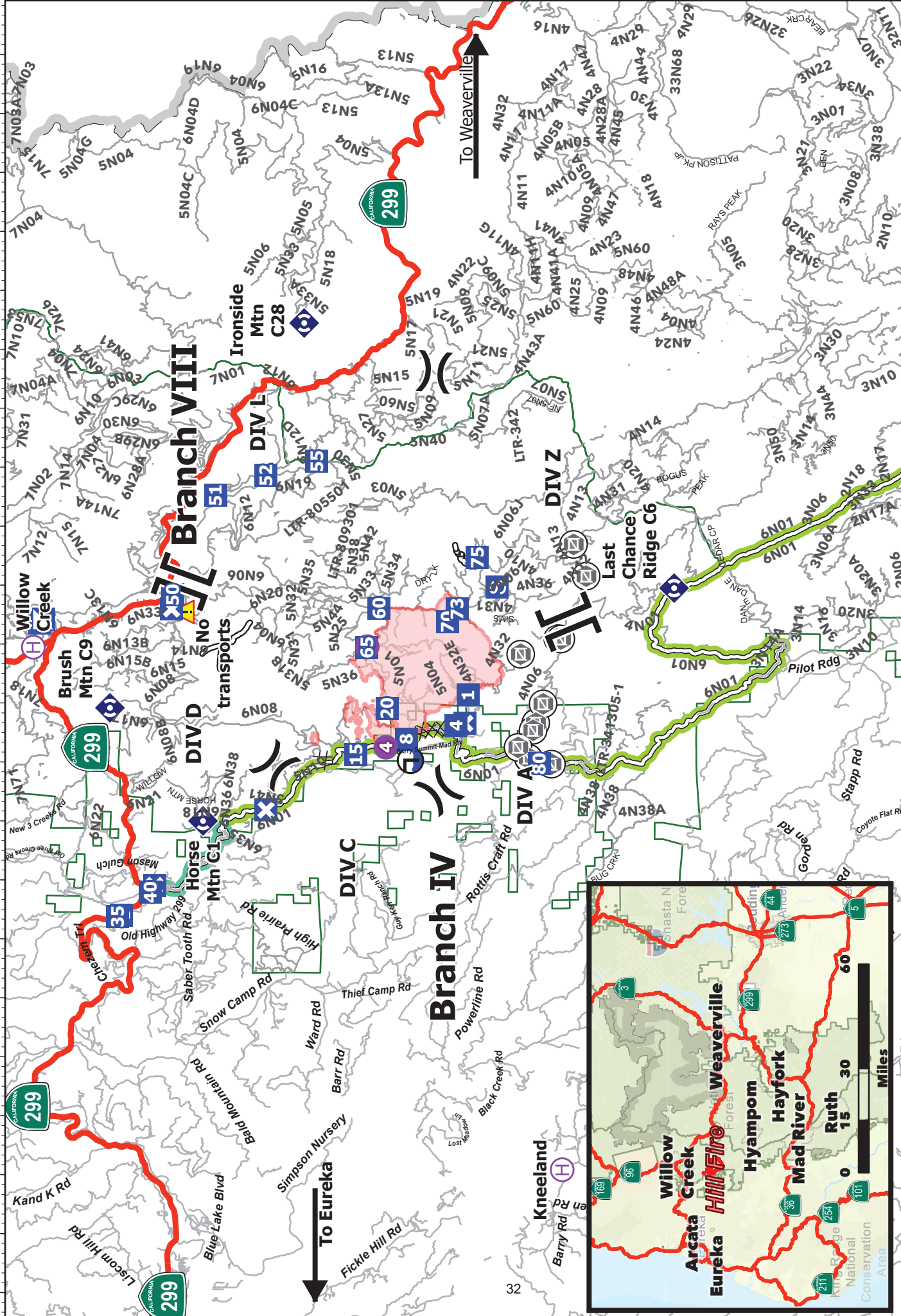
- A completed and signed ICS 225 or 226 Performance Evaluation
 - A Evaluator's Recommendation Letter

Forms are available at the Training Desk

Hester Chan 626.375-6355 (t)

Claudia Soiza 949.632.7813

Training Specialists



TRANSPORTATION

Hill

CA-SRF-000586

07/28/2024 Day

U.S. FOREST SERVICE

CA FIRE

4

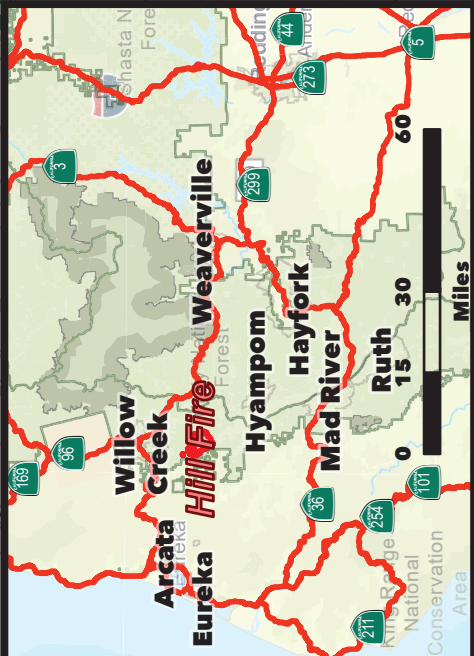
Legend:

- Incident Command Post
- Drop Point
- Closure
- Camp
- Helispot
- Helibase
- Division Break
- Branch Break
- Staging Area
- Gate
- Repeater
- Hazard
- Draft Site
- Route 06N01
- HUM-7K100
- Highway
- Road, Paved
- Road, Dirt/Gravel
- Road, high clearance
- Wildfire Daily Fire Perimeter

Scale: 0 30 60 Miles

QR Code: [QR Code]

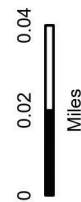
North Arrow: N, W, E, S



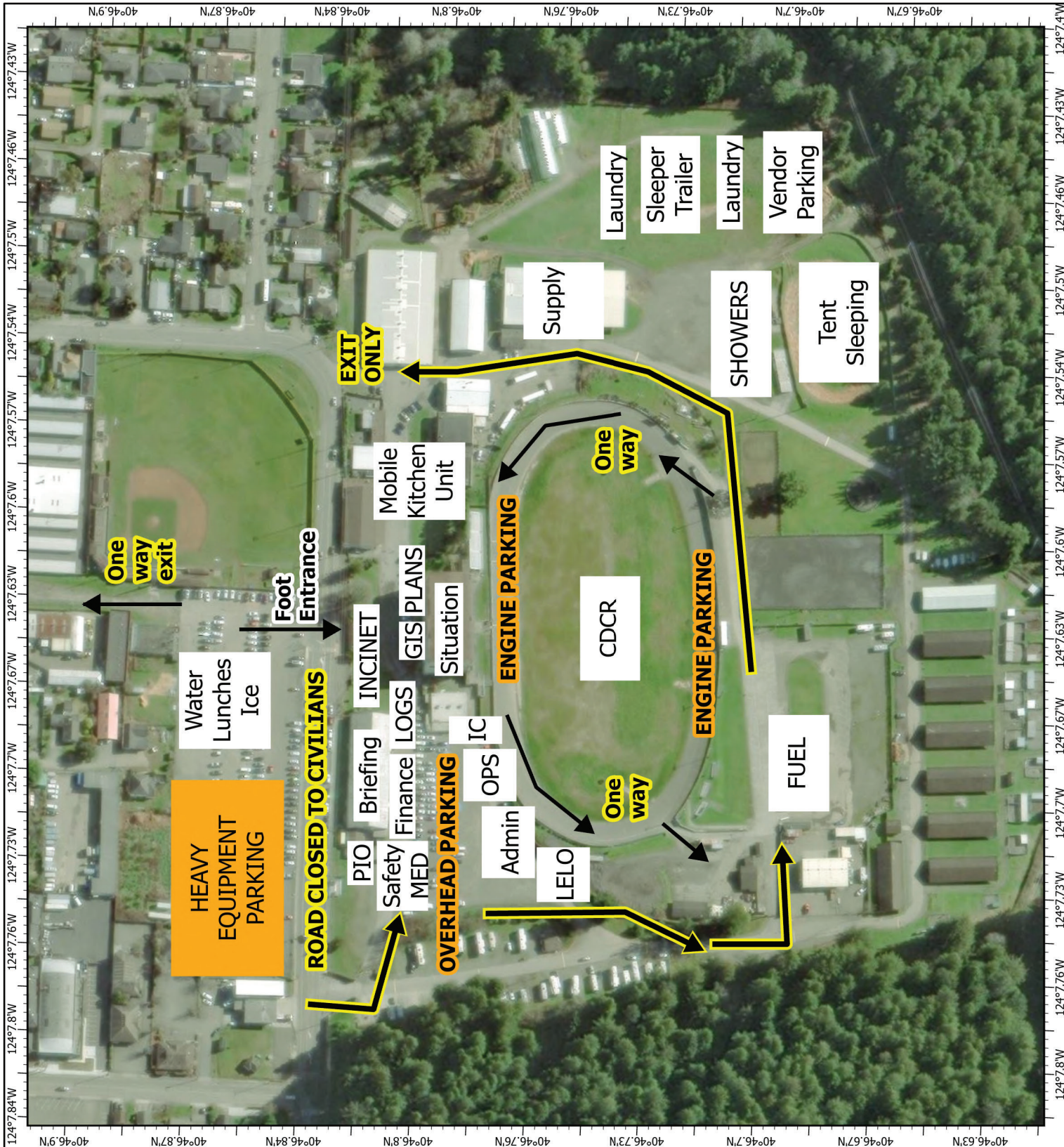
Eureka Basecamp

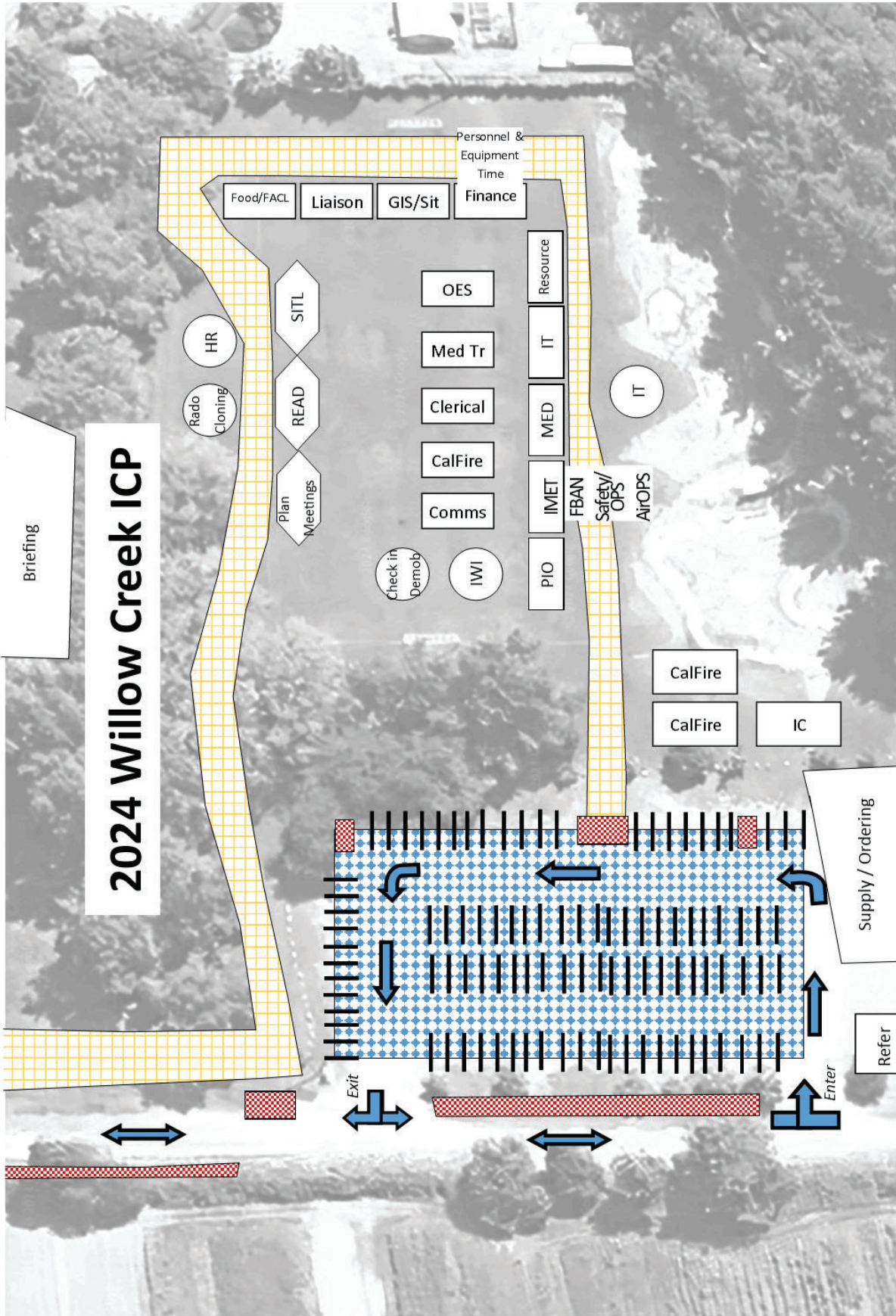
Hill Incident
CA-SRF 000586

Ground Support at
1440 Newburg Rd.
Fortuna



1:2,865 | CAL FIRE IMT2 GIS | 7/26/2024, 12:55
North American 1983 Datum, Lat/Long Grid





7/23/24



Hill Fire Ground Support

Ground support / Demob Inspections

Cal Fire

1440 NEWBURG RD.
FORTUNA, CA 95540

USFS

Trinity Valley Elementary
730 HWY 96 Willow Creek, CA.95573

Fuel Locations

Cal Fire Fuel

Redwood Acres Fairgrounds
Mud Lake Oil Co.
3775 Harris St
Eureka, CA 95503

USFS FUEL

Staub and Sons
100 Kimtu Rd.
Willow Creek 9557

Drop Point 8

Mud Lake Oil Co

Equipment Parking Location

CAL-FIRE

Murray Field
4102 Jacobs Ave
Eureka, CA 95501
Gate Code 3698

USFS

Lower Lot
Trinity Elementary
730 HWY 96
Willow Creek, CA.95573

Cal Fire Repairs

Communications: 661-742-4431

USFS Repairs

Mark Alvarado: 805-680-7702

Cal Fire Ground Support:

Kenneth Coulston (GSUL): 760-835-5396
Jesse Truelock (GSUL): 209-419-4430

USFS Ground Support

Ron Brewer: 619-373-4900
Jeff Burch: 916-599-0481

LINE ORDER FORM



ORDER #	DATE & TIME ORDERED Received from the Line	WHO PLACED ORDER DIVS, OPS, etc....	DELIVER to (DIV, Helispot, DP, etc.) Division, Heli-Spot, Drop Point, etc.	MODE of DELIVERY Drive, Helo, pick-up

Order Received in Communications By:	TIME:

Communications Relayed/Placed the Order To:	TIME:

Order Shipped to the Line By (Name):	TIME:

ITEM#	DESCRIPTION	AMOUNT
1	1,000 Foot Hose Lay: Includes the following 10 lengths, 1 ½" x 100' Hose. 10 lengths, 1" x 100' Hose. 10ea. 1 ½" Gated Wyes. 10ea. 1 ½" to 1" Reducers. 10ea. 1" Nozzles.	
2	2,000 Foot Hose Lay: Includes the following 20 lengths, 1 ½" x 100' Hose. 20 lengths, 1" x 100' Hose. 20ea. 1 ½" Gated Wyes. 20ea. 1 ½" to 1" Reducers. 20ea. 1" Nozzles.	
3	3,000 Foot Hose Lay: Includes the following 30 lengths, 1 ½" x 100' Hose. 30 lengths, 1" x 100' Hose. 30ea. 1 ½" Gated Wyes. 30ea. 1 ½" to 1" Reducers. 30ea. 1" Nozzles.	

ITEM#	REQUESTED ITEM	NFES#	AMOUNT	ITEM#	REQUESTED ITEM	NFES#	AMOUNT
4	Backpack Pump, 5 gallon	1149		26	Batteries, "AA", (package)	0030	
5	Foam, 5 gallon	1145		27	Gasoline, Unleaded (gallon)		
6	Hose, ¾ inch, 50 ft. length	1016		28	Oil, 2 Cycle Mix (quart)	0341	
7	Hose, 1 inch, 100 ft. length	0966		29	Diesel, straight (gallon)		
8	Hose, 1 ½ inch, 100 ft. length	0967		30	Oil, Bar & Chain (gallon)	1880	
9	Increaser, ¾" to 1"	2235		31	Fusees (box)	0105	
10	Increaser, 1" to 1 ½"	0416		32	Torch, Drip Torch ea.	0241	
11	Nozzle, Garden ¾ inch	0136		33	Mix, Drip Torch 3-1, 5 gal.		
12	Nozzle, Forester, 1"	0024		34	Flagging, Ribbon, Color/Roll		
13	Nozzle, KK Type, 1"	1081		35	Washcloth, Waterless	0206	
14	Nozzle, KK Type, 1 ½"	1082		36	Water, Cubi, 5 gallon ea.	0048	
15	Reducer, 1" to ¾"	0733		37	Water, Bottled, (case)		
16	Reducer, 1 ½" to 1"	0010		38	Sports Drink, Gatorade (case)		
17	Tee, Hoseline, 1"x1"x ¾"	1809		39	Food, MRE's (12 per Box)	1842	
18	Tee, Hoseline, 1"x1"x 1"	2240		40	Pump Kit, High Pressure	0870	
19	Tee, Hoseline, 1 ½" x 1 ½" x 1"	0230		41	Pump, High Pressure	0148	
20	Wye, Gated, ¾" inch	0904		42	Pump Kit, Light Weight	0670	
21	Wye, Gated, 1"	0259		43	Sprinkler Kit	1048	
22	Wye, Gated, 1 ½"	0231		44	Pump Kit, Volume	6041	
23	Tank, Collapsible. Capacity Gallons?			45	Mop-Up Kit	0772	
24	Tank, Folding/Frame. Capacity??			46	Fuel (gas/diesel/mix)		
25	Wrap, Structure (roll)	0881					

Date and Time Needed: _____ Point of Contact at Delivery Location: _____

OTHER / NOTES:

MEDICAL PLAN (ICS 206 WF) CIIMT 4

1. Incident Name				2. Operational Period				
HILL INCIDENT CA-SRF-000586				Date/Time: 07/28/2024 – 07/29/2024 0700-0700				
3. EMS / Ambulance Services/Aid Stations								
Name		Location		Frequency/Phone		Advanced Life Support (ALS) Yes No		
Hoopa Ambulance		1200 Airport Rd, Hoopa, CA 95546		Hill Communications		X		
Arcata/ Mad River Ambulance		233 F St. Arcata, California		Hill Communications		X		
Side Trax Medic 3		DP 15 (24 Hours)		Hill Communications		X		
4. Air Rescue / Air Ambulance Services								
Name		Phone		Type of Aircraft & Capability				
REACH AIR		Hill Communications		AIR AMBULANCE, 24 HR ALS, NO HOIST				
MERCY AIR		Hill Communications		AIR AMBULANCE, 24 HR ALS, NO HOIST				
PHI		Hill Communications		AIR AMBULANCE, 24 HR ALS, NO HOIST				
COAST GUARD		Hill Communications		24 HR HOIST, BLS ONLY				
CHP		Hill Communications		0600-0230, ALS, DAY HOIST ONLY				
National Guard (G823)		Hill Communications		24 HR HOIST, ALS				
KRASSEL N353SH		Hill Communications		DAY ONLY, SHORT-HAUL, BLS				
5. Hospitals (all times estimated from incident location)								
Name & Level	GPS Datum – WGS 84 Degrees Decimal Minutes		Travel Time from ICP Air Gnd		Phone	Helipad Yes No		Address
Mad River Community Hospital	Lat:	40°53.72' N	12 min	1hr	707-826-8264 Ext. 1	X		3800 Janes Rd, Arcata, CA 95521
	Long:	124°05.45' W						
Saint Joseph Hospital Level 3 Trauma	Lat:	40° 47.03' N	15 min	1hr 5min	707-445-8121 Ext. 2400	X		2700 Dolbeer Street Eureka, 95501
	Long:	124° 08.80' W						
MERCY MEDICAL Center Redding Level 2 Trauma	Lat:	40°34.325'N	40 min	2hr	530-225-7200 ER Desk	X		2175 Roseline Ave. Redding, CA 96001
	Lat:	122°23.700'W						
UC DAVIS MEDICAL Center Level 1 Trauma/Burn	Lat:	33°33.292'N	1hr	5hr	916-734-3790 ER Desk	X		2315 Stockton Blvd. Sacramento, CA 95817
	Long:	121°27.326'W						
	Lat:							
	Long:							
6. Division / Crew Emergency Pre-Plan								<i>Update and discuss with assigned resources daily.</i>
Fireline EMT / Medic's Division / Branch Location								
Air Hoist site location site: Lat: / Long: / Elevation:								
Helispot: Lat: / Long: / Elevation:								
7. Prepared By (Medical Unit Leader)			8. Date/Time		9. Reviewed By (Safety Officer)		10. Date/Time	
<i>Patrick Dotson</i> MEDL(T) (619) 742-4269			07/26/2024 1600		<i>Mike Alforque</i> SOF1		07/26/2024 1800	

MEDICAL PLAN (ICS 206 WF) CIIMT 4

Medical Incident Report																													
<p>FOR A NON-EMERGENCY INCIDENT, WORK THROUGH CHAIN OF COMMAND TO REPORT AND TRANSPORT INJURED PERSONNEL AS NECESSARY.</p> <p>FOR A MEDICAL EMERGENCY: IDENTIFY ON SCENE INCIDENT COMMANDER BY NAME AND POSITION AND ANNOUNCE "MEDICAL EMERGENCY" TO INITIATE RESPONSE FROM IMT COMMUNICATIONS/DISPATCH.</p>																													
<p>Use the following items to communicate situation to communications/dispatch.</p>																													
<p>1. CONTACT COMMUNICATIONS / DISPATCH (Verify correct frequency prior to starting report) <i>Ex: "Communications, Div. Alpha. Stand-by for Emergency Traffic."</i></p> <p>2. INCIDENT STATUS: Provide incident summary (including number of patients) and command structure. <i>Ex: "Communications, I have a Red priority patient, unconscious, struck by a falling tree. Requesting air ambulance to Forest Road 1 at (Lat./Long.) This will be the Trout Meadow Medical, IC is TFLD Jones. EMT Smith is providing medical care."</i></p>																													
Severity of Emergency / Transport Priority	<input type="checkbox"/> RED / PRIORITY 1 Life or limb threatening injury or illness. Evacuation need is IMMEDIATE <i>Ex: Unconscious, difficulty breathing, bleeding severely, 2° – 3° burns more than 4 palm sizes, heat stroke, disoriented.</i> <input type="checkbox"/> YELLOW / PRIORITY 2 Serious Injury or illness. Evacuation may be DELAYED if necessary. <i>Ex: Significant trauma, unable to walk, 2° – 3° burns not more than 1-3 palm sizes.</i> <input type="checkbox"/> GREEN / PRIORITY 3 Minor Injury or illness. Non-Emergency transport <i>Ex: Sprains, strains, minor heat-related illness.</i>																												
Nature of Injury or Illness & Mechanism of Injury			<i>Brief Summary of Injury or Illness (Ex: Unconscious, Struck by Falling Tree)</i>																										
Transport Request			<i>Air Ambulance / Short Haul/Hoist Ground Ambulance / Other</i>																										
Patient Location			<i>Descriptive Location & Lat. / Long. (WGS84)</i>																										
Incident Name			<i>Geographic Name + "Medical" (Ex: Trout Meadow Medical)</i>																										
On-Scene Incident Commander			<i>Name of on-scene IC of Incident within an Incident (Ex: TFLD Jones)</i>																										
Patient Care			<i>Name of Care Provider (Ex: EMT Smith)</i>																										
<p>3. INITIAL PATIENT ASSESSMENT: Complete this section for each patient as applicable (start with the most severe patient)</p> <p>Patient Assessment: See IRPG PAGE 106</p>																													
Treatment:																													
<p>4. TRANSPORT PLAN:</p> <p>Evacuation Location (if different): (Descriptive Location (drop point, intersection, etc.) or Lat. / Long.) Patient's ETA to Evacuation Location:</p>																													
Helispot / Extraction Site Size and Hazards:																													
<p>5. ADDITIONAL RESOURCES / EQUIPMENT NEEDS:</p> <p><i>Example: Paramedic/EMT, Crews, Immobilization Devices, AED, Oxygen, Trauma Bag, IV/Fluid(s), Splints, Rope rescue, Wheeled litter, HAZMAT, Extrication :</i></p>																													
<p>6. COMMUNICATIONS: Identify State Air/Ground EMS Frequencies and Hospital Contacts as applicable</p> <table border="1" style="width: 100%; border-collapse: collapse;"> <thead> <tr> <th style="width: 15%;">Function</th> <th style="width: 25%;">Channel Name/Number</th> <th style="width: 15%;">Receive (RX)</th> <th style="width: 15%;">Tone/NAC *</th> <th style="width: 15%;">Transmit (TX)</th> <th style="width: 15%;">Tone/NAC *</th> </tr> </thead> <tbody> <tr> <td>COMMAND</td> <td></td> <td></td> <td></td> <td></td> <td></td> </tr> <tr> <td>AIR-TO-GRND</td> <td></td> <td></td> <td></td> <td></td> <td></td> </tr> <tr> <td>TACTICAL</td> <td></td> <td></td> <td></td> <td></td> <td></td> </tr> </tbody> </table>						Function	Channel Name/Number	Receive (RX)	Tone/NAC *	Transmit (TX)	Tone/NAC *	COMMAND						AIR-TO-GRND						TACTICAL					
Function	Channel Name/Number	Receive (RX)	Tone/NAC *	Transmit (TX)	Tone/NAC *																								
COMMAND																													
AIR-TO-GRND																													
TACTICAL																													
<p>7. CONTINGENCY: Considerations: If primary options fail, what actions can be implemented in conjunction with primary evacuation method? Be thinking ahead. .</p>																													
<p>8. ADDITIONAL INFORMATION: Updates/Changes, etc. .</p>																													
<p>REMEMBER: Confirm ETA's of resources ordered. Act according to your level of training. Be Alert. Keep Calm. Think Clearly. Act Decisively. .</p>																													

UNIT LOG (ICS 214)

1. Incident Name:	2. Operational Period:	Date From:	7/28/24	Date To:	7/29/25
HILL		Time From:	0700	Time To:	0700

3. Unit Name/Designators	4. Unit Leader (Name and ICS Position)

5. Personnel Assigned/Designators		
NAME	ICS POSITION	HOME BASE

6. Activity Log (Continue on Reverse)	
TIME	MAJOR EVENTS

7. Prepared By:	Date/Time:	NIMS IAP
------------------------	-------------------	----------