

INCIDENT ACTION PLAN

HILL INCIDENT

CA-SRF-000586

P5 R3Q5

Thursday



OPERATIONAL PERIOD

8/1/2024 0700


to

8/1/2024 1900



INTENTIONALLY LEFT BLANK

ORGANIZATION ASSIGNMENT LIST (ICS 203)

1. Incident Name: HILL		2. Operational Period: Date From: 8/1/2024 Time From: 0700		Date To: 8/1/2024 Time To: 1900	
3. Incident Commander(s) and Command Staff:			7. Operation Section:		
IC/UC's	R. Opliger/K. Jacobson (T)	Operations	Kerri Williamson		
Deputy	Ron Myers	Deputy Operations			
Safety Officer	M. Alforque/ M. Huneke/L.Lambert (T)	Night Ops			
Information Officer	S. Bishop/D. McMillian	Planning Operations	D. Pereira/J. Walter		
Liaison Officer	J. Collier/T.Sanderson/S. Wilbanks	Branch	IV	R. McLaughlin (12hr)	
Human Resources	D. Taliaferro/P. Spearow (T)	Division/Group	A/C/D		
4. Agency/Organization Representatives:		Division/Group	WEST SUPPRESSION REPAIR		
Agency/Organization	Name	Division/Group			
USFS AREP	N. Bunch/J. Wooley/N. Colegrove/ A. Miyagishima	Division/Group			
AADM HUU	Kurt McCray	Division/Group			
AADM SRF	T. McArthur/J. Dyer	Division/Group			
Line HUU	Derrick Misner	Branch	VIII		
USFS READ	Erin Rentz	Division/Group	L/Z	D. Pearsal/L. Aspelin(T)/B. Baker (T)	
CHP	Larry Depee	Division/Group			
Cal Trans	Jeff Smith	Division/Group	EAST SUPPRESSION REPAIR	M. Carter/D. Guilliani (T)	
CAL OES	Ryan Wakefield	Division/Group			
Humboldt County OES	Ryan Derby	Division/Group			
PG&E	Mike Minton	Division/Group			
Humboldt County Sheriff's Department	Josh McCall	Division/Group			
		Branch			
5. Planning Section:		Division/Group			
Chief	J. Camacho/ J. Scuri/T. Reaves (T)	Division/Group			
Deputy		Division/Group			
Resource Unit	H. Kelmanson/R Toby (T)/D. Preston	Division/Group			
Situation Unit	M. Hoose/ J. Hamer/T. Tarabelli	Branch			
Documentation Unit	(RIST) L. Faller/N.Cloud	Division/Group			
Demobilization Unit	Ryan DaRosa(T)	Division/Group			
GISS	M. Eister/ C. Barrett	Division/Group			
FBAN	Kevin Osborne	Division/Group			
IMET	James White	Division/Group			
Training Tech Spec	Emil Picchi	Air Operations Branch		Director:	Galen Young
ITSS	G. Marquez/J. Whiteside/D. Howard	Air Support Group Supervisor		K. Wedin	
		Air Tactical Group Supervisor			
6. Logistics Section:		Helibase Manager (Willow Creek)		Branden Martin	
Chief	J. Wells/ M. Hale	Helibase Manager (Kneeland)			
Supply Unit		8. Finance/Administration Section:			
Facilities Unit	Errol Solomon	Chief	J. Reynolds/H. Perry		
Ground Support Unit	Ron Brewer	Time Unit	Loni Holt		
Communications Unit	Kevin Janes	Procurement Unit	Craig Erickson		
Medical Unit	R. Sandler/P. Dotson(T)	Comp/Claims Unit	Sheila Miner		
		Cost Unit	Vicky Wilson		
Prepared By: Name:	Jeremy Camacho	Position/Title:	PSC	Signature:	
ICS 203		Date/Time:	7/31/2024 2300 hours		



Fire Weather Forecast



FORECAST NO: 13
PREDICTION FOR: Thursday - Friday
DATE: August 1st, 2024
FORECAST ISSUED: 2000 July 31st, 2024

FIRE: Hill Fire
UNIT: CA-SRF
IMET: James White (707-296-1635)
SIGNED: *James White*

WEATHER DISCUSSION: * Valleys = 2500 ft (Mosquito Creek), Ridgetop = 5500 ft (Grouse Mountain) *
 Warming and drying will peak today with highs at low elevations above 90 and minimum RH just above 20 percent. A strengthening nighttime inversion will allow for poor RH recoveries and an extended burn period. Elevated mixing heights today combined with strong southeast winds aloft will create a complex wind environment. Southeast winds will start early in the morning, battling with the northwest sea breeze in the afternoon. Wind direction will be inconsistent with some enhanced gusts up to 20 mph. Conditions will slightly ease Friday as moisture moves in aloft and high pressure weakens.

THURSDAY:

WEATHER: Mostly clear. Battling winds from southeast to northwest.
MAX TEMP: Valleys: 90-94°F (2-4°F ↑) **3PM RH:** Valleys: 22-28% (4-8% ↓)
 Ridgetops: 83-87°F (1-3°F ↑) Ridgetops: 26-32% (3-6% ↓)
CHC WTG RAIN: 0% **CHC THUNDER:** 0% **INSTABILITY:** Medium

WINDS: Valleys: Upslope 2-4, afternoon South 3-6 mph.
(20 feet) Ridgetops: Southeast 4-8, afternoon inconsistent South to West 10-14 mph.

MIXING HEIGHT: Rising to 2,600 ft by 1400. **TRANSPORT WIND:** Northwest 10-15 mph.

THURSDAY NIGHT:

WEATHER: Clear.
MIN TEMP: Valleys: 58-62° (2-4°F ↓) **3AM RH:** Valleys: 45-55% (2-4% ↓)
 Ridgetops: 62-68° (2-4°F ↓) Ridgetops: 32-42% (2-4% ↓)
CHC WTG RAIN: 0% **CHC THUNDER:** 0% **INSTABILITY:** Low

WINDS: Valleys: Downslope 2-4 mph, strongest just after sunset.
(20 FEET) Ridgetops: Downslope 2-4 mph.

MIXING HEIGHT: Dropping to 200 ft by 2200. **TRANSPORT WIND:** Southeast 2-4 mph.

FRIDAY:

WEATHER: Few high clouds. Very slight chance of thunderstorms in the late afternoon.
MAX TEMP: Valleys: 86-90°F (3-6°F ↓) **3PM RH:** Valleys: 26-32% (2-4% ↑)
 Ridgetops: 83-87°F (1-3°F ↓) Ridgetops: 28-34% (1-3% ↑)
CHC WTG RAIN: 0% **CHC THUNDER:** 5% **INSTABILITY:** Low

WINDS: Valleys: Upslope 2-4, afternoon north 3-6 mph.
(20 feet) Ridgetops: Upslope 3-6, afternoon north 8-12 mph.


MIXING HEIGHT: Rising to 1,600 ft by 1400. **TRANSPORT WIND:** North 6-10 mph.

EXTENDED OUTLOOK: Models are consistent in a strong plume of midlevel moisture moving northward late Friday. Essentially all models show moisture jetting up the Sacramento Valley with about 70% also showing moisture curving alongshore and then pushing inland to effect NW California. Moisture will bring a risk is mostly dry thunderstorms, but models have yet to show a consistent forcing mechanism. Lightning conditions are on a knives edge with a slight forecast change likely to greatly change the forecast. At the moment, there is a 20% chance of dry lightning on Saturday.

—————→
 Nearby Weather Observations



FIRE BEHAVIOR FORECAST

FORECAST NUMBER: 15	TYPE OF FIRE: Wildfire
FIRE NAME: Hill CA-SRF-00586	OPERATIONAL PERIOD: 08/01/2024 Day
DATE ISSUED: 07/31/2024	TIME ISSUED: 19:00
UNIT: Six Rivers National Forest	SIGNED:  Digitally signed by KEVIN OSBORNE Date: 2024.07.31 16:30:32 -0700 Kevin Osborne 530-782-2712

INPUTS

WEATHER SUMMARY: **See attached Weather Forecast for details/discussion**

	08/01/2024 Day	08/01/2024 Night
Sky Weather	Mostly clear. Battling winds from SE to NW	Clear.
Temp	Valleys: 90-94°F Ridgetops: 83-87°F	Valleys: 58-62°F Ridgetops: 62-68°F
RH %	3PM Valleys: 22-28% Ridgetops: 26-32%	3AM Valleys: 45-55% Ridgetops: 32-42%
20 ft. Winds	Valleys: Upslope 2-4, afternoon S 3-6 mph. Ridgetops: Southeast 4-8, afternoon inconsistent South to West 10-14 mph	Valleys: Downslope 2-4 mph, strongest just after sunset Ridgetops: Downslope 2-4 mph.
Stability	Moderate to weak inversion, mixing height lifting to 2,600 ft. AGL by 14:00	Inversion developing after sunset, mixing height lowering to 200 ft. AGL by 22:00

FIRE BEHAVIOR OUTPUTS

GENERAL

Fire is at control features around the entire perimeter and burn down and mop-up have mitigated much of the heat near control lines. The result of these conditions is very low potential for any notable fire behavior and an expectation that fire will remain within containment lines. The main threat for any spread outside of containment lines is spotting from interior torching, though this potential has diminished and will continue to decrease. Re-burn potential exists in areas where the ground fuels have been consumed and the canopy has been cured, this threat is decreasing daily as heat diminishes.

The continued warming and drying trends increase fire behavior potential outside of the current fire perimeter. In the event of fire resources responding to an initial attack, expect more notable fire behavior than they have encountered on the Hill Fire in recent days. Fire out of wind or slope alignment will exhibit backing and flanking fire with flame lengths near to slightly above 4 ft. If aligned with wind or slope, expect flame lengths 8-10ft. Maximum spotting distance near 1/2 of a mile and POI near 90%.

Consider reviewing a pocket card for local knowledge on fire environment triggers and thresholds:

BI Pocket Card Threshold: 29 BI 97 th Percentile: 39.57 BI Forecast Value: 38.13 NOTE - wind <i>IS</i> a part of BI	Six Rivers Pocket Card 	ERC Pocket Card Threshold: 39 ERC 97 th Percentile: 51.97 ERC Forecast Value: 50.03 NOTE - wind <i>IS NOT</i> part of ERC
---	---	---

SPECIFIC

Div A (South), Div C (West) and D (North): Expect isolated smoke production from snags and stump holes interior. No movement beyond control features anticipated.

Div L (East) and Div Z (Southeast): Fire is at control lines across both divisions and crews are working on mop-up and securing the lines. Heavy dead and down fuels will retain heat and continue to smolder. No movement beyond control features anticipated.

Initial Attack: As with any emerging fire, take a moment to assess the fuels, weather, terrain, and slope position. Expected fire behavior ranges from that which is conducive to direct action to flame lengths that would pose significant challenges to ground resources based on the specific combination(s) of these factors.

AIR OPERATIONS

Limited smoke production will provide clear skies for any required air operations.

SAFETY

The fire retains initial attack responsibility with the TFR and is also likely to support any initial attack fires in the general vicinity in support of the local unit. Keep in mind that fire behavior on an initial attack is likely to be elevated compared to what you are experiencing during mop-up, patrol and back haul.

Hill Incident – Safety Message

INCIDENT #CA-SRF-000586

DATE: 08/1/2024

TIME: 0700-1900 Hrs.

Lead with Respect

Fireline leaders respect their co-workers and subordinates. This attitude creates an atmosphere of professionalism and effectiveness in line resources. As an additional benefit, safety is enhanced. Employ your people in accordance with their qualifications and capabilities.

- Know your people and look out for their well-being.
- Keep your people informed.
- Build the team.

PREPARING FOR A MEDICAL EMERGENCY

Practice reporting the 8-Line Medical Protocol with all crew members. An emergency shouldn't be the first time that the process is reviewed. Know where the closest medical staff is located. Pre plan travel routes and utilize drop points as rendezvous locations if needed. Have a plan in case aircraft are unavailable. Know who else is medically trained within assigned resources.

Driving Safety with Civilian Traffic

- Maintain a safe following distance and allow space for cars to pass.
- Be diligent in using your mirrors as cars may be passing you.
- Use turnouts when available to let cars pass.
- Stay calm; we are not part of their race.
- Maintain a heightened level of awareness of blind corners.
- Watch out for visitors who may stop to take photos and block the roadway.
- SLOW DOWN!

Extraction Plan

- Before you engage in any action, consider your location and egress options and how you would safely extract an injured person, given the resources that are available, site and environmental conditions.
- Re-evaluate as your location or conditions change.
- Don't wait for an injury to occur before developing a plan!

Prepared by:
Micheal Huneke (SOF1)
Lucas Lambert (SOF2-T)



INCIDENT RISK ANALYSIS

ICS 215A

BR/DV	HAZARDOUS ACTIONS – CONDITIONS	MITIGATIONS – WARNINGS – REMEDIES
ALL	TRAFFIC HAZARDS AND DRIVING	<ul style="list-style-type: none"> • Take extra precautions when entering or exiting the roadways. • Maintain high visibility in the operational area. • Many roads are narrow and mid-slope, with soft shoulders. Allow heavy vehicles to pass on the uphill side. Use spotters when backing or turning around. • Keep your speed down in all areas. Drive at or below posted speed limits. • Use chock blocks and turn wheels into hills. • Be alert for wildlife. Dusk to Dawn poses the greatest potential for accidents. • Follow all incident travel plans and routes. • Expect road blocks and stopped traffic around construction zones on Highway 299.
ALL	STEEP TERRAIN & ROLLING DEBRIS	<ul style="list-style-type: none"> • Maintain 8'-10' spacing when working & walking. • Do not work above any personnel. • Evaluate the necessity of sending personnel into areas with limited access.
ALL	HAZARD / DANGER TREES	<ul style="list-style-type: none"> • Follow Hazard Tree Safety Guidelines (IRPG p.20.) • Limit the number of personnel around snags and their exposure time. • Fallers must be qualified for the trees being felled. • Be alert around hazard trees during wind events, even green trees. • The hazard zone extends a minimum of 2½ tree lengths. • Avoid parking vehicles or taking breaks under or near hazard trees.
ALL	FATIGUE & COMPLACENCY	<ul style="list-style-type: none"> • Be alert, monitor all resources for signs of fatigue, and take breaks as necessary. • Maintain a 2:1 Work to rest ratio. • Repeated assignments in the same area can lead to complacency, making personnel vulnerable to accidents. • Take steps to maintain situational awareness for the duration of the incident. • Take tactical pauses as practical and feasible.
ALL	SUPPRESSION REPAIR	<ul style="list-style-type: none"> • Ensure communications are established with operators. • Use hand signals if other communications are unavailable. • Maintain a 50' – 100' exclusion area around equipment. • Use road guards as needed to control traffic. • Assess areas of operation for hazards and obstructions. • Use proper PPE when operating chippers. • Ensure fire suppression equipment is available near masticator operations.
ALL	REPOPULATION	<ul style="list-style-type: none"> • Use caution when driving and expect additional traffic in the fire area. • Monitor for logging trucks on Titlow Hill Rd. • Refer to traffic hazards and driving mitigations
ALL	COMMUNICATIONS	<ul style="list-style-type: none"> • Think about what you are going to say before you speak. • Ensure your radio has the current clone and you are on the correct channels. • Listen for other radio traffic before you speak. • Scan assigned frequencies and listen to what adjacent resources are doing.
ALL	MOP-UP & PATROL	<ul style="list-style-type: none"> • Balance the risk of exposure to hazards against the mop-up objective. • Evaluate areas for hazard trees and locate stump holes for avoidance. • Monitor fatigue; shorten shifts to increase rest where appropriate. • Review and follow "Look Up, Look Down, Look Around" procedures. • Evaluate mop-up distances against what is safe and necessary.
ALL	EXTERNAL DISTRACTIONS/ STRESS	<ul style="list-style-type: none"> • Resources operating on the fire may be impacted in their personal lives by current events external to the fire. • Communicate with home/ family members, allow resources to communicate as needed • Avoid misinformation, remain focused on your assignment. • Seek help when a higher level of care is necessary.
ALL	DEMOBILIZATION	<ul style="list-style-type: none"> • Complete pre-trip on your travel vehicle. • Monitor driver fatigue while returning from incident. Take breaks as necessary and/ or switch vehicle operators if possible. • Obey posted speed limit signs. • Communicate your departure and arrival to maintain accountability. • Always wear your seatbelt.
ALL	WILDLIFE	<ul style="list-style-type: none"> • High concentration of wildlife in the area. • Backhaul garbage from drop points. Do not keep food inside your tent. • If encountering a bear, make noise, and travel in a group. DO NOT RUN!
ALL	UNFAMILIAR WORK AREAS	<ul style="list-style-type: none"> • Be familiar with local hazards. • Conduct thorough assessments before starting work. • Ensure LCES is in place. • Familiarize yourself with adjoining resources.

**INCIDENT NAME:
HILL FIRE**

**OPERATIONAL PERIOD: 0700 – 1900 Hrs.
August 1, 2024**

**Prepared by:
M. Huneke SOF1/
L. Lambert SOF2(t)**

Date/Time Prepared: 07/31/2024 – 1600 hrs.

ICS 205 - INCIDENT RADIO COMMUNICATIONS PLAN

CONTROLLED UNCLASSIFIED
INFORMATION//BASIC

1. Incident Name: HILL		2. Date/Time Prepared Date: 07/31/2024 Time: 1930		3. Operational Period: Date From: 08/01/24 Time From: 0700		Date To: Time To: 1900			
Incident Channels									
4. Communications									
Ch#	Function	Name	Assigned To	Rx Freq	Rx Tone	Tx Freq	Tx Tone	Mode	Notes
1	COMMAND	NIFC C1	ALL DIVS	170.9750	(T1) 110.9	168.7000	(T1) 110.9	A	HORSE MTN (NORTH)
2	COMMAND	NIFC C6	ALL DIVS	168.4750	(T1) 110.9	165.4000	(T1) 110.9	A	LAST CHANCE RIDGE (SOUTH)
3	COMMAND	NIFC C9	ALL DIVS	170.0125	(T1) 110.9	165.2500	(T1) 110.9	A	BRUSH MTN (NORTH)
4									
5	COMMAND	NIFC C28	ALL DIVS	173.9875	(T1) 110.9	171.8375	(T1) 110.9	A	IRONSIDE MTN (EAST)
6	TACTICAL	NIFC T1	DIV A/C/D	168.0500	(T1) 110.9	168.0500	(T1) 110.9	A	
7	TACTICAL	NIFC T4		166.7250	(T1) 110.9	166.7250	(T1) 110.9	A	UNASSIGNED
8	TACTICAL	NIFC T5		166.7750	(T1) 110.9	166.7750	(T1) 110.9	A	UNASSIGNED
9	TACTICAL	VFIRE 23	DIV L/Z	154.2950	(T6) 156.7	154.2950	(T6) 156.7	A	
10	TACTICAL	VFIRE 24		154.2725	(T6) 156.7	154.2725	(T6) 156.7	A	UNASSIGNED
11	TACTICAL	VFIRE 25		154.2875	(T6) 156.7	154.2875	(T6) 156.7	A	UNASSIGNED
12	TACTICAL	VFIRE 26	EAST SUPPRESSION REPAIR	154.3025	(T6) 156.7	154.3025	(T6) 156.7	A	
13	A/G CMD	A/G CMD	ALL DIVS	170.3125	0.0	170.3125	0.0	A	
14	A/G TAC	A/G TAC	ALL DIVS	169.1000	0.0	169.1000	0.0	A	
15	MEDICAL	CALCORD	ALL DIVS	156.0750	(T6) 156.7	156.0750	(T6) 156.7	A	MEDICAL COORDINATION
16	EMERGENCY	AIRGUARD	ALL DIVS	168.6250	0.0	168.6250	(T1) 110.9	A	EMERGENCY USE ONLY
17									
18									
19									
20	EMERGENCY	AIRGUARD	ALL DIVS	168.6250	0.0	168.6250	(T1) 110.9	A	EMERGENCY USE ONLY
5. Special Instructions									
YOU MUST GET YOUR RADIO CLONED TO COMMUNICATE EFFECTIVELY.								HILL COMMUNICATIONS (919) 903-2087	
6. Prepared by (Communications Unit Leader): Name: TIM MAGUIRE								Signature: <i>Tim Maguire</i>	
ICS 205 - CONTROLLED UNCLASSIFIED INFORMATION//BASIC								Date/Time: 07/31/24 1930	

ICS 205 - INCIDENT RADIO COMMUNICATIONS PLAN

CONTROLLED UNCLASSIFIED INFORMATION//BASIC

1. Incident Name: HILL Page 2	2. Date/Time Prepared Date: 07/31/2024 Time: 1930	3. Operational Period: Date From: 08/01/24 Time From: 0700 Date To: 08/01/24 Time To: 1900
--	--	---

4. Communications										
Ch#	Function	Name	Assigned To	Rx Freq	Rx Tone	Tx Freq	Tx Tone	Mode	Notes	
1	COMMAND	SRF	I/A	172.3750	0.0	164.1750	OST	A	"NORTH COAST" COMMAND CENTER	
2	COMMAND	SHF	I/A	171.5750	0.0	165.0125	OST	A	"REDDING" COMMAND CENTER	
3	TACTICAL	R5 T4	I/A	166.5500	0.0	166.5500	0.0	A		
4	TACTICAL	R5 T5	I/A	167.1125	0.0	167.1125	0.0	A		
5	TACTICAL	R5 T6	I/A	168.2375	0.0	168.2375	0.0	A		
6	A/G TAC	A/G 43	I/A	167.6000	0.0	167.6000	0.0	A	FOREST I/A PRIMARY	
7	A/G TAC	A/G 08	I/A	166.8750	0.0	166.8750	0.0	A	FOREST I/A SECONDARY	
8	A/G CMD	HILL AGC	HILL A/G CMD	170.3125	0.0	170.3125	0.0	A	HILL A/G COMMAND	
9	A/G TAC	HILL AGT	HILL A/G TAC	169.1000	0.0	169.1000	0.0	A	HILL A/G TACTICAL	
10	COMMAND	HUU L	I/A	151.2500	(T1) 110.9	159.4050	OST	A	"FORTUNA" COMMAND CENTER	
11	TACTICAL	CDF T3	I/A	151.1750	(T16) 192.8	151.1750	(T16) 192.8	A		
12	TACTICAL	CDF T7	I/A	151.3400	(T16) 192.8	151.3400	(T16) 192.8	A		
13	TACTICAL	CDF T10	I/A	151.4000	(T16) 192.8	151.4000	(T16) 192.8	A		
14	A/G TAC	CDF A/G 3	I/A	159.3675	(T16) 192.8	159.3675	(T16) 192.8	A		
15	MEDICAL	CALCORD		156.0750	(T6) 156.7	156.0750	(T6) 156.7	A	MEDICAL COORDINATION	
16	EMERGENCY	AIRGUARD		168.6250	0.0	168.6250	(T1) 110.9	A	EMERGENCY USE ONLY	
17										
18										
19										
20	EMERGENCY	AIRGUARD		168.6250	0.0	168.6250	(T1) 110.9	A	EMERGENCY USE ONLY	

5. Special Instructions
YOU MUST GET YOUR RADIO CLONED TO COMMUNICATE EFFECTIVELY. HILL COMMUNICATIONS (919) 903-2087

6. Prepared by (Communications Unit Leader): Name: TIM MAGUIRE	Signature: <i>Tim Maguire</i>
ICS 205 - CONTROLLED UNCLASSIFIED INFORMATION//BASIC	NIMS IAP Date/Time: 07/31/24 1930

Demobilization Message – September 1st, 2024

WILLOW CREEK BASE CAMP

If you require **AIR TRAVEL** back to your home unit, please stop by the DMOB office located at WILLOW CREEK Base Camp **Seventy-Two (72)** Hours prior to your DMOB DATE.

This will ensure the Travel Agent has plenty of time to secure you a flight.

If you are listed on the DMOB LIST stop by the DMOB to begin the process at your assigned date and time.

Ensure to turn in your CRT's or Shift Tickets to the Finance Section Daily!

Contractors & Vipers only need to take their yellow inspection form with Hours & Miles to ground support, you do not need to take the equipment.

WILLOW CREEK CAMP DMOB LIST FOR 8/01/2024

<u>REQUEST #</u>	<u>RESOURCE ID</u>	<u>REPORT TO DMOB</u>
E-64	WTT2 – CENTRAL VALLEY FIRE LLC	0830
E-63	WTS2 – STEPHEN LARRY/ALLEN ADAMS	0830
E-147	ENG3 – CASTLE MOUNTAIN	0830
E-149	ENG6 – GREELEY BRUSH	0845
C-8	CRW1 – AMERICAN RIVER IHC CA-TNF	0845
E-124	MBM2 – HEATHER HART & RANDY	0845
E-57	ENG3 STF-322	0900
E-58	ENG3 STF-343	0900

TENTATIVE RELEASE FOR 8/02/2024

<u>REQUEST #</u>	<u>RESOURCE ID</u>	<u>REPORT TO DMOB</u>
E-73	WTS1 NORTHSTATE	0830
E-78	WTS1 STEVEN BERRY	0830
E-109	DOZ2 SMOKY MOUNTAIN	0830
E-123	MBM2 – BRAUN EQUIPMENT INC	0845
E-138	ENG6 IDAHO TARGHEE 651	0845
E-121	MBM2 - JAKE GROTEGUTH	0845
E-120	MBM2 - COLEMAN CONSTRUCTION	0900
E-62	CHP2 - POMEROY TREE CARE LLC	0900
E-61	CHP2 - LONESTAR ENTERPRISES INC	0900
O-175	LAUGESEN, JASON NIELS	0915
O-176	STANBROUGH, SUSAN COURTNEY	0915
O-295	LAMBERT, LUCAS	0915

Ryan Da Rosa - DMOB(T)

(919) 903-2066

Federal Finance Message

Please submit your time to

2024.hill.finance@firenet.gov

If you need assistance with electronic submission, please reach out to our Finance personnel at briefing- we're here to assist those in need

- FOR CTR SUBMISSION, PLEASE PUT CTR and RO# IN SUBJECT LINE OF EMAIL.
- FOR SHIFT TICKETS, PLEASE PUT ST AND RO# IN SUBJECT LINE OF EMAIL.
- IF TURNING IN FINAL CTR OR SHIFT TICKET, PLEASE ALSO PUT FINAL IN SUBJECT LINE.
- PLEASE MAKE EVERY EFFORT TO TURN IN ALL CTR's AND SHIFT TICKETS DAILY.
- PLEASE INCLUDE YOUR RESOURCE ORDER # ON ALL DOCUMENTATION SUBMITTED, INCLUDING RECEIPTS.
- AUTO RESPONSE IS SET UP TO LET YOU KNOW THAT DOCUMENTS WERE RECEIVED.
- FOR DEMOB: Finance will email the Draft OF-288 or OF-286 to the employee for their review and approval. If everything is correct, Finance will reply with FINAL OF-288/OFF-286.

FINANCE CHECK IN:

- PLEASE ENSURE THE BELOW DOCUMENTS ARE EMAILED TO FINANCE WITH RESOURCE ORDER NUMBER NOTED:

Agency Equipment/Crews: <ul style="list-style-type: none">• Manifest• Resource Order• CTR's	Overhead: <ul style="list-style-type: none">• Resource Order• AD Hire Form (If an AD)• CTR's	Contract Equipment/Contract Crews: <ul style="list-style-type: none">• Agreement/Manifest• Resource Order• Shift Ticket• Inspection Forms	Cooperator: <ul style="list-style-type: none">• Cooperative Agreement• Resource Order• Shift Ticket• Inspection Forms
--	---	---	---

Shift Ticket Example

EMERGENCY SHIFT TICKET and EVALUATION FORM					Contractor Name	
The responsible Government Officer will complete this form each shift					Fireline Builders	
Incident or Project Name HILL		Incident Number CA-SRF-000586	Request Number E # Here		Operator #1 Bob Smith	Operator #2 Jeff Smith
Agreement Number Obtain from suppliers agreement					Operator Furnished By: <input checked="" type="checkbox"/> Contractor <input type="checkbox"/> Government	
Equipment Make CAT		Equipment Model / Type D6N, Type II E			Operating Supplies Furnished By: <input checked="" type="checkbox"/> Contractor <input type="checkbox"/> Government	
Serial Number 6LN3344		Licence Number			Equipment Status <input checked="" type="checkbox"/> Inspected <input checked="" type="checkbox"/> Under Agreement	
Equipment Use					Released by Government	
(Circle) Hours / Days / Miles					Withdrawn by Contractor	
Date Mo / Day	Start	Stop	Work	Assignment		
7/15	0700	2400	17	Division B		
7/16	0001	0700	7	Division B		
					Remarks/Comments ** NO DAMAGE / NO CLAIMS	
Vendor Rating					Govt. Rep. Name and Position - PRINT Mike Weber Div. A	
Poor* Avg. Good Exc. N/A					Govt. Rep. Signature <i>Mike Weber</i>	
Met Performance Expectations					Contractor Signature <i>Bob Smith</i>	
Equipment in Safe Working Condition					Date 07/16/24	
Operator Skill Level					Time 0700	
Operates Safely					Calfire 297 (Rev 3-2011)	
Operator's Cooperation Level						
Overall Performance						

* NOTE: Any rating of POOR requires an explanation in Comment Section.
 **Final evaluation or for more documentation, use an ICS Form 230 or equivalent.

Pink - Finance Blue - Home Unit HE Coordinator Yellow - Vendor White - Govt Representative

EMERGENCY SHIFT TICKET and EVALUATION FORM					Contractor Name	
The responsible Government Officer will complete this form each shift					Fireline Builders	
Incident or Project Name HILL		Incident Number CA-SRF-000586	Request Number E # Here		Operator #1 Bob Smith	Operator #2
Agreement Number Obtain from suppliers agreement					Operator Furnished By: <input checked="" type="checkbox"/> Contractor <input type="checkbox"/> Government	
Equipment Make CAT		Equipment Model / Type D6N, Type II E			Operating Supplies Furnished By: <input checked="" type="checkbox"/> Contractor <input type="checkbox"/> Government	
Serial Number 6LN3344		Licence Number			Equipment Status <input checked="" type="checkbox"/> Inspected <input checked="" type="checkbox"/> Under Agreement	
Equipment Use					Released by Government	
(Circle) Hours / Days / Miles					Withdrawn by Contractor	
Date Mo / Day	Start	Stop	Work	Assignment		
7/16	0700	1900	12	Division B		
					Remarks/Comments ** NO DAMAGE / NO CLAIMS	
Vendor Rating					Govt. Rep. Name and Position - PRINT Mike Weber Div. A	
Poor* Avg. Good Exc. N/A					Govt. Rep. Signature <i>Mike Weber</i>	
Met Performance Expectations					Contractor Signature <i>Bob Smith</i>	
Equipment in Safe Working Condition					Date 07/16/24	
Operator Skill Level					Time 1900	
Operates Safely					Calfire 297 (Rev 3-2011)	
Operator's Cooperation Level						
Overall Performance						

* NOTE: Any rating of POOR requires an explanation in Comment Section.
 **Final evaluation or for more documentation, use an ICS Form 230 or equivalent.

Pink - Finance Blue - Home Unit HE Coordinator Yellow - Vendor White - Govt Representative



OES CHECK-OUT

OES/Local Government Resources

Contact OES Chief Ryan Wakefield

For all needs including F-42s, Extensions, Crew Rotations, etc.



Phone/Text: [916.761.4901](tel:916.761.4901)

Email: caloes5262@gmail.com



HILL FIRE INCIDENT Human Resource Message



PRACTICE RANDOM ACTS OF KINDNESS!

IT WILL MAKE ANOTHER PERSON'S DAY!

IT WILL MAKE YOUR DAY!

ACCEPTING PEOPLE'S DIFFERENCES, BACKGROUNDS AND CULTURES BUILDS STRONGER TEAMS AND POSITIVE RELATIONSHIPS WHERE EVERYONE FEELS VALUED AND RESPECTED.



Have a Great Day! Diane Taliaferro, HRSP



Union Representative(s): PRIMARY: Denice Edgar

Title: NFFE Local 1865 Steward

E-mail: denice.edgar@usda.gov

Phone: 530-598-4170

SECONDARY Afterhours/Nighttime: Justin Brown

NFFE-FSC R5 Council Vice President

justin.i.brown@usda.gov

530-250-5551

Hill Fire: Resource Advisor Message

Fish Screens: Coho Salmon Critical Habitat

The Trinity River and tributaries are considered critical habitat for Threatened Coho salmon, an anadromous fish (fish born in freshwater who spend most of their lives in saltwater and return to freshwater to spawn). Please ensure that any Mark 3 and Engine/Tender suction hoses have a fish screen attached when drafting. Fish screens are designed to minimize stress, injury or even death during the drawing and application process. Talk to a READ if you need a screen.



Port Orford Cedar Root Disease

Some local drainages are infected with POC Root disease, which is a root rotting disease that spreads via water and mud. Infested waters near the fire perimeter include: the main stem of Willow Creek and small creeks to the north up to Hoopa, south side of Willow Creek (includes area in **Boise Creek Campground**) in East Fork of Willow Creek (includes area in **East Fork Campground**) and in most of the tributaries. **DO NOT DRAFT from East Fork Campground OR Boise Creek Campground.**

IMPORTANT: Yellow/White Candy-Striped flagging is being used for cultural/natural resource protection. Flagging indicates equipment exclusion areas.

- **Invasive Plant Species**



The area in and around the Hill Fire is home to many sensitive species. Infestations of highly invasive plant species, like yellow star thistle, are one of the largest threats to sensitive species populations here. Spread via vehicles and foot traffic as well as re-activation via fire is of high concern. To help protect these sensitive places, do not park in and try to avoid areas flagged areas.

- **Cultural Resources:**

There is a potential that undocumented cultural resources will be encountered while fighting fire. It is important when a potential cultural resource is encountered it is not disturbed in any manner. Work with your division to notify a resource advisor for recommendations on how to proceed.



FIRE INFORMATION



If you would like to share any photos or videos, please send them to 2024.Hill@firenet.gov or airdrop your digital images to a Public Information Officer.

Please provide who took the picture so we can give photo credit to the photographer 😊

Remember for your personal social media platforms, pause before you post. Does your photo have the following;

- **fireline personnel not wearing full PPE**
- **identifiable structures (ie. addresses)**
- **burning / burned structures**
- **inmate crews**
- **faces of children**
- **accident or investigation scenes**
- **sensitive natural or cultural resources (or QR codes to maps that identify them)**
- **whiteboards / flipcharts with passwords or internal contacts listed**
- **license plates**

If you are contacted by any public who needs assistance, please have them call 530-414-9056 which is supported 8am to 7pm.

TRAINING SPECIALIST MESSAGE

Trainer / Mentors:

As of **8/02/24** there will no longer be a Training Specialist assigned to this incident. If this changes you will be notified.

TRAINEES:

*If you **ARE NOT** currently registered with the Training Specialist please make sure you get completed before you leave the incident the following from your trainer:*

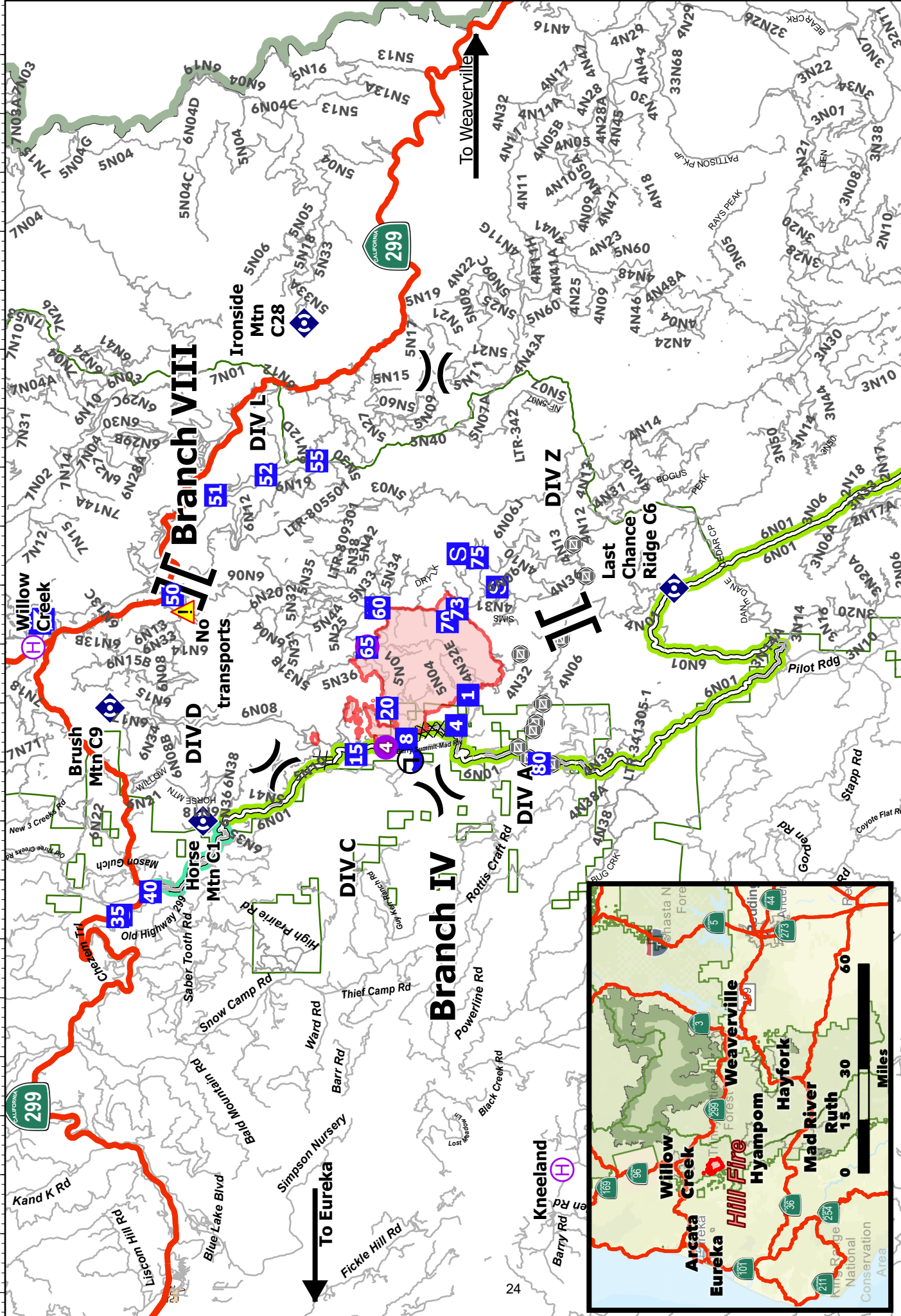
- **Signatures in your task book**
- **An evaluator record completed**
- **A completed 225 Personnel Evaluation**

*If you **ARE** currently registered with the Training Specialist, please contact me and I will process your training packet over the phone. You will need to text or email me the following information:*

- **Completed ICS-225WF or ICS-226 Personnel Evaluation**
- **Evaluator record for incident**
- **Dates of your assignment, position held, and Trainer information**
- **Trainer information includes name, phone, home unit, email address**
- **Percentage of your task book that has been completed**

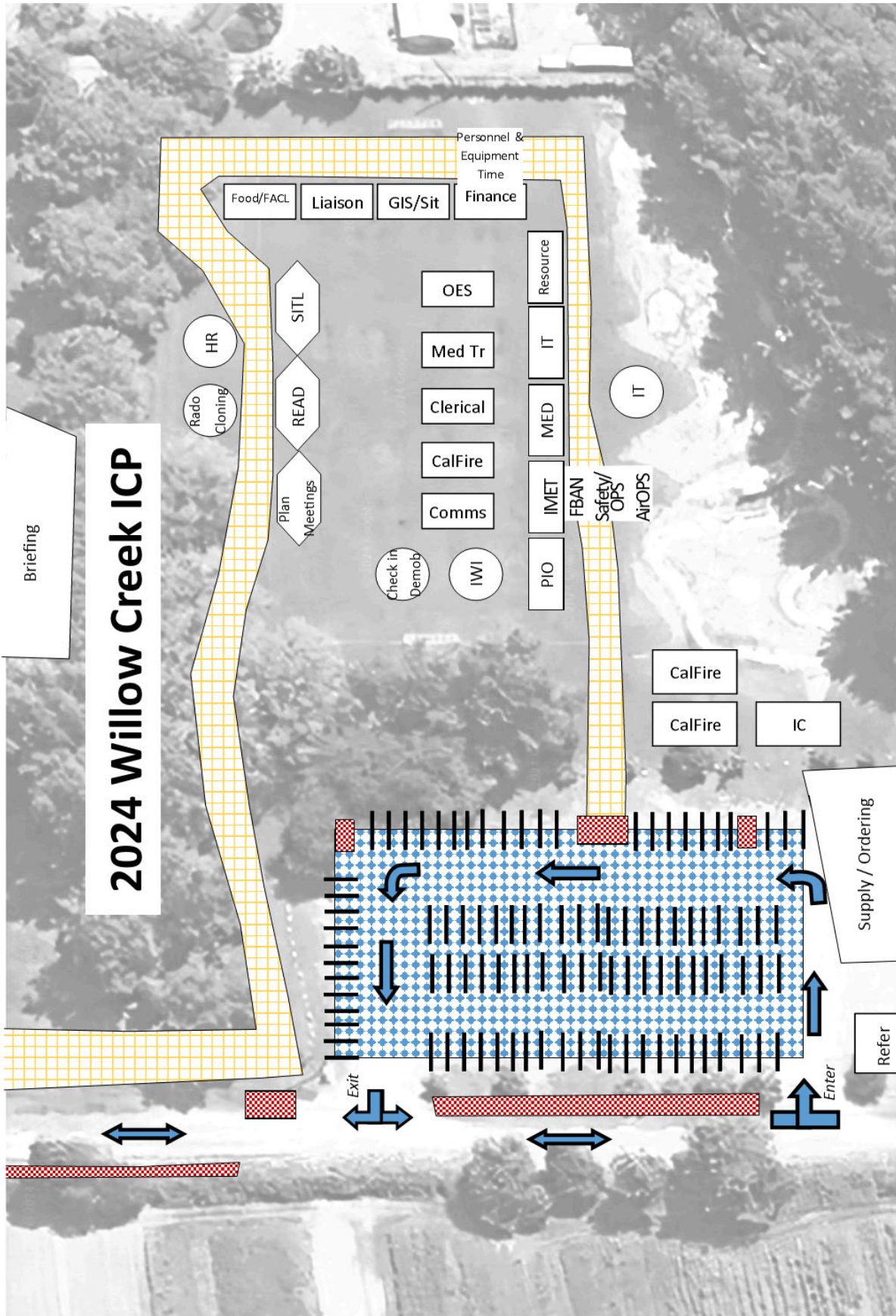
Additional forms are available on-line @
<https://www.nwcg.gov/publications/ics-forms>

Emil Picchi
Training Specialist
(650)520-5102
TNSPEP@gmail.com



Wildfire Daily Fire Perimeter
 Hill Incident Daily Product
 Road: Paved
 Road: Dirt/Gravel
 Road: High clearance
 Draft Site
 Route 06N01
 HUM-7K100
 Highway
 Staging Area
 Gate
 Repeater
 Hazard
 Incident Command Post
 Drop Point
 Closure
 Camp
 Helispot
 Helibase
 Division Break
 Branch Break

TRANSPORTATION
Hill
 CA-SRF-000586
 08/01/2024



2024 Willow Creek ICP

Briefing

Personnel & Equipment Time Finance

Food/FACL

Liaison

GIS/Sit

Finance

OES

Med Tr

Clerical

CalFire

Comms

Resource

IT

MED

IMET

PIO

FBAN

Safety/OPS

AirOPS

IT

Plan Meetings

READ

SITL

HR

Radio Cloning

Check in Demob

IWI

CalFire

CalFire

IC

Supply / Ordering

Refer

Service Route—Do Not Block

One way Traffic

Utility/Light Vehicle Parking

No Parking



7/23/24

Logistics Message

Last time to drop off your laundry is Thursday morning.

Last shower is Friday morning 1000

Last Fuel will be Friday 1400

Last meal will be Saturday morning breakfast

LINE ORDER FORM



ORDER #	DATE & TIME ORDERED Received from the Line	WHO PLACED ORDER DIVS, OPS, etc....	DELIVER to (DIV, Helispot, DP, etc.) Division, Heli-Spot, Drop Point, etc.	MODE of DEVIVERY Drive, Helo, pick-up			
Order Received in Communications By:				TIME:			
Communications Relayed/Placed the Order To:				TIME:			
Order Shipped to the Line By (Name):				TIME:			
ITEM#	DESCRIPTION			AMOUNT			
1	1,000 Foot Hose Lay: Includes the following 10 lengths, 1 1/2" x 100' Hose. 10 lengths, 1" x 100' Hose. 10ea. 1 1/2" Gated Wyes. 10ea. 1 1/2" to 1" Reducers. 10ea. 1" Nozzles.						
2	2,000 Foot Hose Lay: Includes the following 20 lengths, 1 1/2" x 100' Hose. 20 lengths, 1" x 100' Hose. 20ea. 1 1/2" Gated Wyes. 20ea. 1 1/2" to 1" Reducers. 20ea. 1" Nozzles.						
3	3,000 Foot Hose Lay: Includes the following 30 lengths, 1 1/2" x 100' Hose. 30 lengths, 1" x 100' Hose. 30ea. 1 1/2" Gated Wyes. 30ea. 1 1/2" to 1" Reducers. 30ea. 1" Nozzles.						
ITEM#	REQUESTED ITEM	NFES#	AMOUNT	ITEM#	REQUESTED ITEM	NFES#	AMOUNT
4	Backpack Pump, 5 gallon	1149		26	Batteries, "AA", (package)	0030	
5	Foam, 5 gallon	1145		27	Gasoline, Unleaded (gallon)		
6	Hose, 3/4 inch, 50 ft. length	1016		28	Oil, 2 Cycle Mix (quart)	0341	
7	Hose, 1 inch, 100 ft. length	0966		29	Diesel, straight (gallon)		
8	Hose, 1 1/2 inch, 100 ft. length	0967		30	Oil, Bar & Chain (gallon)	1880	
9	Increaser, 3/4" to 1"	2235		31	Fusees (box)	0105	
10	Increaser, 1" to 1 1/2"	0416		32	Torch, Drip Torch ea.	0241	
11	Nozzle, Garden 3/4 inch	0136		33	Mix, Drip Torch 3-1, 5 gal.		
12	Nozzle, Forester, 1"	0024		34	Flagging, Ribbon, Color/Roll		
13	Nozzle, KK Type, 1"	1081		35	Washcloth, Waterless	0206	
14	Nozzle, KK Type, 1 1/2"	1082		36	Water, Cubi, 5 gallon ea.	0048	
15	Reducer, 1" to 3/4"	0733		37	Water, Bottled, (case)		
16	Reducer, 1 1/2" to 1"	0010		38	Sports Drink, Gatorade (case)		
17	Tee, Hoseline, 1"x1"x 3/4"	1809		39	Food, MRE's (12 per Box)	1842	
18	Tee, Hoseline, 1"x1"x 1"	2240		40	Pump Kit, High Pressure	0870	
19	Tee, Hoseline, 1 1/2" x 1 1/2" x 1"	0230		41	Pump, High Pressure	0148	
20	Wye, Gated, 3/4" inch	0904		42	Pump Kit, Light Weight	0670	
21	Wye, Gated, 1"	0259		43	Sprinkler Kit	1048	
22	Wye, Gated, 1 1/2"	0231		44	Pump Kit, Volume	6041	
23	Tank, Collapsible. Capacity Gallons?			45	Mop-Up Kit	0772	
24	Tank, Folding/Frame. Capacity??			46	Fuel (gas/diesel/mix)		
25	Wrap, Structure (roll)	0881					

Date and Time Needed: _____ Point of Contact at Delivery Location: _____

OTHER / NOTES:

INTENTIONALLY LEFT BLANK

1. Incident Name		2. Operational Period					
HILL INCIDENT CA-SRF-000586		Date/time 08/01/2024 0700-1900					
3. EMS / Ambulance Services/Aid Stations							
Name	Location		Frequency/Phone	Advanced Life Support (ALS) Yes No			
Hoopaa Ambulance	1200 Airport Rd, Hoopa, CA 95546		Hill Communications	X			
Arcata/ Mad River Ambulance	233 F St. Arcata, California		Hill Communications	X			
4. Air Rescue / Air Ambulance Services							
Name	Phone		Type of Aircraft & Capability				
REACH AIR	Hill Communications		AIR AMBULANCE, 24 HR ALS, NO HOIST				
MERCY AIR	Hill Communications		AIR AMBULANCE, 24 HR ALS, NO HOIST				
PHI	Hill Communications		AIR AMBULANCE, 24 HR ALS, NO HOIST				
COAST GUARD	Hill Communications		24 HR HOIST, BLS ONLY				
CHP	Hill Communications		0600-0230, ALS, DAY HOIST ONLY				
National Guard (G823)	Hill Communications		24 HR HOIST, ALS				
5. Hospitals (all times estimated from incident location)							
Name & Level	GPS Datum – WGS 84 Degrees Decimal Minutes		Travel Time from ICP Air Gnd		Phone	Helipad Yes No	Address
Saint Joseph Hospital Level 3 Trauma	Lat:	40° 47.03' N	15 min	1hr 5min	707-445-8121 Ext. 2400	X	2700 Dolbeer Street Eureka, 95501
	Long:	124° 08.80' W					
MERCY MEDICAL Center Redding Level 2 Trauma	Lat:	40°34.325'N	13 min	2hr	530-225-7200 ER Desk	X	2175 Roseline Ave. Redding, CA 96001
	Lat:	122°23.700'W					
UC DAVIS MEDICAL Center Level 1 Trauma/Burn	Lat:	33°33.292'N	1hr	5hr	916-734-3790 ER Desk	X	2315 Stockton Blvd. Sacramento, CA 95817
	Long:	121°27.326'W					
Asante Rogue Medical Center Level 2 Trauma	Lat:	42°19.37' N	1 hr	4 hr	514-789-7178 ER Desk	X	2825 E Barnett Road Medford, Oregon 97504
	Long:	122°49.768'W					
6. Division / Crew Emergency Pre-Plan						<i>Update and discuss with assigned resources daily.</i>	
Fireline EMT / Medic's Division / Branch Location							
Air Hoist site location site: Lat: / Long: / Elevation:							
Helispot: Lat: / Long: / Elevation:							
7. Prepared By (Medical Unit Leader)		8. Date/Time		9. Reviewed By (Safety Officer)		10. Date/Time	
Lori Olsen MEDL (559) 618-1022		08/01/2024 0700-1900		Mike Alforque SOF1		08/01/2024 0700-1900	

Medical Incident Report

FOR A NON-EMERGENCY INCIDENT, WORK THROUGH CHAIN OF COMMAND TO REPORT AND TRANSPORT INJURED PERSONNEL AS NECESSARY.

FOR A MEDICAL EMERGENCY: IDENTIFY ON SCENE INCIDENT COMMANDER BY NAME AND POSITION AND ANNOUNCE "MEDICAL EMERGENCY" TO INITIATE RESPONSE FROM IMT COMMUNICATIONS/DISPATCH.

Use the following items to communicate situation to communications/dispatch.

1. CONTACT COMMUNICATIONS / DISPATCH (Verify correct frequency prior to starting report)

Ex: "Communications, Div. Alpha. Stand-by for Emergency Traffic."

2. INCIDENT STATUS: Provide incident summary (including number of patients) and command structure.

Ex: "Communications, I have a Red priority patient, unconscious, struck by a falling tree. Requesting air ambulance to Forest Road 1 at (Lat./Long.) This will be the Trout Meadow Medical, IC is TFLD Jones. EMT Smith is providing medical care."

Severity of Emergency / Transport Priority	<input type="checkbox"/> RED / PRIORITY 1 Life or limb threatening injury or illness. Evacuation need is IMMEDIATE <i>Ex: Unconscious, difficulty breathing, bleeding severely, 2° – 3° burns more than 4 palm sizes, heat stroke, disoriented.</i> <input type="checkbox"/> YELLOW / PRIORITY 2 Serious Injury or illness. Evacuation may be DELAYED if necessary. <i>Ex: Significant trauma, unable to walk, 2° – 3° burns not more than 1-3 palm sizes.</i> <input type="checkbox"/> GREEN / PRIORITY 3 Minor Injury or illness. Non-Emergency transport <i>Ex: Sprains, strains, minor heat-related illness.</i>	
Nature of Injury or Illness & Mechanism of Injury		<i>Brief Summary of Injury or Illness (Ex: Unconscious, Struck by Falling Tree)</i>
Transport Request		<i>Air Ambulance / Short Haul/Hoist Ground Ambulance / Other</i>
Patient Location		<i>Descriptive Location & Lat. / Long. (WGS84)</i>
Incident Name		<i>Geographic Name + "Medical" (Ex: Trout Meadow Medical)</i>
On-Scene Incident Commander		<i>Name of on-scene IC of Incident within an Incident (Ex: TFLD Jones)</i>
Patient Care		<i>Name of Care Provider (Ex: EMT Smith)</i>

3. INITIAL PATIENT ASSESSMENT: Complete this section for each patient as applicable (start with the most severe patient)

Patient Assessment: See IRPG PAGE 106

Treatment:

4. TRANSPORT PLAN:

Evacuation Location (if different): (Descriptive Location (drop point, intersection, etc.) or Lat. / Long.) Patient's ETA to Evacuation Location:

Helispot / Extraction Site Size and Hazards:

5. ADDITIONAL RESOURCES / EQUIPMENT NEEDS:

Example: Paramedic/EMT, Crews, Immobilization Devices, AED, Oxygen, Trauma Bag, IV/Fluid(s), Splints, Rope rescue, Wheeled litter, HAZMAT, Extrication :

6. COMMUNICATIONS: Identify State Air/Ground EMS Frequencies and Hospital Contacts as applicable

Function	Channel Name/Number	Receive (RX)	Tone/NAC *	Transmit (TX)	Tone/NAC *
COMMAND					
AIR-TO-GRND					
TACTICAL					

7. CONTINGENCY: Considerations: If primary options fail, what actions can be implemented in conjunction with primary evacuation method? Be thinking ahead. .

8. ADDITIONAL INFORMATION: Updates/Changes, etc. .

REMEMBER: Confirm ETA's of resources ordered. Act according to your level of training. Be Alert. Keep Calm. Think Clearly. Act Decisively. .

