

# INCIDENT ACTION PLAN

# ROOT FIRE

CA-SHF-001036 / 0514 P5S96A



## SUNDAY

9/7/2025 AT 0700 - 9/8/2025 AT 0700





# TEAM MISSION

The mission of the Georgia Forestry Commission Incident Management Team is to safely, effectively, and efficiently manage the Root Fire by maintaining a team of skilled, professional, and productive personnel. We will strive to successfully complete our mission and achieve our objectives while creating a positive work environment for all assigned personnel.

Consumption of drugs that alter decision making abilities, such as marijuana, other controlled substances, or alcohol is prohibited. Any form of harassment or discrimination will not be tolerated. All inappropriate behavior will be dealt with promptly and could result in disciplinary action, including reporting back to an individual's home unit. Please report any inappropriate behavior to your supervisor or any team member.

Thank you for your willingness to help protect these communities and resources and enjoy your assignment.

## INCIDENT OBJECTIVES (ICS 202)

<b>1. Incident Name:</b>		<b>2. Operational Period:</b>	
ROOT		Date/Time From: 09/07/2025 0700      SUN	Date/Time To: 09/08/2025 0700      MON
<b>3. Objective(s):</b>  <b>Management Objectives:</b> <ul style="list-style-type: none"> <li>Provide for emergency personnel and public safety at all times.</li> <li>Protect property, improvements, and infrastructure.</li> <li>Ensure coordinated, timely and accurate release of public information.</li> <li>Foster and maintain relationships with all cooperators and stakeholders.</li> <li>Protect economic, natural, cultural and heritage resources.</li> <li>Maintain fiscal accountability and keep costs commensurate with values at risk.</li> </ul> <b>Control Objectives:</b> <ul style="list-style-type: none"> <li>Keep the fire North of forest road 39N25</li> <li>Keep the fire South of the north boundary of the Castle Crag Wilderness</li> <li>Keep the fire East of Whalen Summit</li> <li>Keep the fire West of the North Fork of Castle Creek</li> </ul>			
<b>4. Operational Period Command Emphasis:</b>			
<b>General Situational Awareness:</b>  Steep and rugged terrain.  Seasonally dry and receptive fuel beds.			
<b>5. Site Safety Plan Required?</b> Yes <input type="checkbox"/> No <input checked="" type="checkbox"/>			
<b>Approved Site Safety Plan(s) Located at:</b>			
<b>6. Incident Action Plan</b> (the items checked below are included in this Incident Action Plan): <div style="display: flex; justify-content: space-between; margin-top: 10px;"> <div style="width: 45%;"> <input checked="" type="checkbox"/> ICS 202      <input type="checkbox"/> ICS 207  <input checked="" type="checkbox"/> ICS 203      <input checked="" type="checkbox"/> ICS 208  <input checked="" type="checkbox"/> ICS 204      <input checked="" type="checkbox"/> ICS 220  <input checked="" type="checkbox"/> ICS 205      <input checked="" type="checkbox"/> Map/Chart  <input type="checkbox"/> ICS 205A      <input checked="" type="checkbox"/> Weather Forecast/Tides/Currents  <input checked="" type="checkbox"/> ICS 206         </div> <div style="width: 45%;">           Other Attachments:  <input checked="" type="checkbox"/> ICS 214  <input checked="" type="checkbox"/> FINANCE MESSAGE  <input checked="" type="checkbox"/> INFORMATION MESSAGE  <input type="checkbox"/> </div> </div>			
<b>7. Prepared by:</b> RACHEL FONVIELLE		<b>Position/Title:</b> PSC3(T)	
<b>8. Approved by Incident Commander:</b>		<b>Signature:</b>	
<b>ICS 202</b>		<b>IAP Page</b>	
		<b>Date/Time:</b> 09/06/2025 2000	

# ORGANIZATION ASSIGNMENT LIST (ICS 203)

<b>1. Incident Name:</b>		<b>2. Operational Period:</b>	
ROOT		Date/Time From: 09/07/2025 0700      SUN	Date/Time To: 09/08/2025 0700      MON
<b>3. Incident Commander(s) and Command Staff:</b>		GROUND SUPPORT UNIT	KEN BRADY CHAD BRACKIN (T)
IC/UC	JOINER, BLAIR H	COMMUNICATIONS UNIT	MARK SPANN LEE WEAVER
IC/UC	GORE, DANIEL G	SUPPLY UNIT	
IC/UC	BACON, MATTHEW (T)	FACILITIES UNIT	
SAFETY OFFICER	LELAND BASS	GROUND SUPPORT UNIT	
INFORMATION OFFICER	PATRICIA STOCKETT	FOOD UNIT	
MEDICAL	LAYNE PAULK (T)	<b>7. Operations Section:</b>	
LIAISON OFFICER	STEPHEN SPRADLEY	FIELD OPERATIONS	MARCUS BEASLEY
LIAISON OFFICER	BRAY ADDISON	PLANNING OPS	TROY HELMS
LIAISON OFFICER	BRIAN RAMSEY		
<b>4. Agency/Organization Representative(s):</b>			
<b>Agency/Organization</b>	<b>Name</b>		
AGENCY ADMINISTRATOR	BEN SUNDAL	DIVISION/GROUP	A/F      CROUSER WAINWRIGHT / MOGLIA (T)
AGENCY ADMINISTRATOR	JOE RODAME (T)	DIVISION/GROUP	L      OBST/TURNER(T)/DUNN (T)
CALFIRE SHU	TROY VELIN	DIVISION/GROUP	T      DAN WALTON/ WESLEY SISK (T)
CALFIRE SKU	JAKE BURGESS	DIVISION/GROUP	NIGHT A/F/L/T      ERICK MATTSON
CASTLE CRAHS STATE PARK	TODD JONES	<b>7b. Air Operations Branch:</b>	
SHASTA COUNTY	MCDANIEL	AIR OPS BRANCH DIRECTOR	
LEAD READ	MONICA LOMAHUKLUH	AIR ATTACK SUPERVISOR	
<b>5. Planning Section:</b>		AIR SUPPORT SUPERVISOR	
CHIEF	ETHAN ROBERTSON	HELICOPTER COORDINATOR	
CHIEF	RACHEL FONVILLE (T)	AIR TANKER COORDINATOR	
DEPUTY		<b>8. Finance/Administration Section:</b>	
RESOURCES UNIT		CHIEF	JOE FINCHER
SITUATION UNIT		TIME UNIT	JESSICA LEE
DOCUMENTATION UNIT		PROCUREMENT UNIT	
DEMOBILIZATION UNIT		COMPENSATION UNIT	
FIRE BEHAVIOR ANALYST		COST UNIT	
HUMAN RESOURCE SPECIALIST			
TRAINING SPECIALIST			
GISS	CAITLIN BOON		
GISS	SYLVIA TOUCHSTONE (T)		
IMET	BRETT LUTZ		
TECHNOLOGY SUPPORT SPECIALIST			
<b>6. Logistics Section:</b>			
CHIEF	WILLIE BOSTON		
ORDERING	KRISTY NAUGHTON TUCKER COLEMAN (T)		
FACILITIES UNIT	JASON HARRIS KEVIN MACEWEN		
<b>9. Prepared By:</b>		<b>Signature:</b>	
Name:	RACHEL FONVILLE	Position/Title:	PSC(T)
ICS 203	IAP Page	Date/Time:	09/06/2025 2000





# Root Fire Fire Weather Forecast



**FORECAST NO:** 3  
**PREDICTION FOR:** Sun 0600 – Sat 0600  
**SHIFT DATE:** Sep 7<sup>th</sup>, 2025  
**ISSUED:** 1800 PDT, Sep 6<sup>th</sup>, 2025

**UNIT:** Shasta National Forest  
**Incident Meteorologist:** Brett Lutz  
**Phone:** 916-860-9192

**WEATHER DISCUSSION:** High clouds will increase and likely become overcast during the afternoon Sunday resulting in lighter winds and slightly higher humidity Sunday. Ridgetop winds are likely to continue out of the S Sunday, increasing Monday morning ahead of the first wave of showers & isolated thunderstorms that will move across the area from the offshore low Monday afternoon-evening. Cooler, more moist conditions, additional showers, & isolated thunderstorms are likely Tue & Wed, tapering off Thursday.

---

## Sunday (0600-1800 PDT):

- **WEATHER:** Partly cloudy in the morning becoming mostly cloudy in the afternoon due to high clouds.
  - **WIND (20 FT):** Up slope & Up drainage, generally S 5-10 mph in the morning with gusts 10-15 mph.  
(24hr Wind Trend: Down 5 mph in the afternoon)
  - **MAX TEMPERATURES:** 65-75F. (24hr Max T Trend: Little change)
  - **MIN RH:** 35-45%. (24hr Trend: Up 5%)
  - **CHANCE OF WETTING RAIN (> or = to 0.10"):** 0%
  - **CHC of LIGHTNING:** 0%
  - **MIXING HEIGHT:** Inversion breaking mid-late morning. Mixing to 2500ft AGL mid-afternoon.
  - **MIXING WIND:** Light early increasing to S 5-10 mph late morning, then 10-15 mph in the afternoon.
- 

## Sunday Night (1800-0600 PDT):

- **WEATHER:** Mostly cloudy becoming partly cloudy.
  - **WIND (20 FT):** Calm to S 5-10 mph on the ridgetop, otherwise variable, mainly NE 5 mph or less.
  - **MIN TEMPERATURES:** 45-55°F.
  - **MAX RH:** 70-85%.
  - **CHANCE OF WETTING RAIN (> or = to 0.10"):** 0%
  - **CHC of LIGHTNING:** 0%
  - **MIXING HEIGHT:** 1500ft or less.
- 

## Monday (0600-1800 PDT):

- **WEATHER:** Partly cloudy early, then cloudy. A slight chance of showers in the morning with scattered showers & isolated thunderstorms likely in the afternoon-evening.
  - **WIND (20 FT):** Upslope & up drainage, generally S 5-10 mph with gusts 10-15 mph, becoming SW 5-15 mph late afternoon-evening. (24hr Trend: Down 5 mph in the afternoon)
  - **MAX TEMPERATURES:** 59-69F. (24hr Max Trend: Down 6°F)
  - **MIN RH:** 50-60%. (24hr Trend: Up 10%)
  - **CHANCE OF WETTING RAIN (> or = to 0.10"):** 65% with 0.15" likely by midnight.
  - **CHC of LIGHTNING:** 60%
  - **MIXING HEIGHT:** Inversion breaking late morning. Increasing to 3000ft AGL mid-afternoon.
  - **TRANSPORT WIND:** S 10 mph morning, then SW 20 mph in afternoon.
- 

## Day 3-5 Outlook, Tuesday-Thursday:

Lighter W-NW winds Tue-Wed w/highs in the 60s & lows in the mid 40s. Mostly cloudy w/showers & isolated thunderstorms likely. Rainfall 0.25-0.50" Tue, 0.10-0.25" Wed, & <0.10".

---

## 24 Hour Observation Summary from Friday, 9/5/25 as of 1725 PDT:

**Blue Ridge RAWS (5859ft):** Temps: 58F/ 72F, RH: 57% / 36%, Peak Wind: WNW 11 G22mph @ 1651 PDT  
**Snowbrush RAWS (4812ft):** Temps: 53F/ 73F, RH: 73% / 32%, Peak Wind: S 5 G15mph @ 1640 PDT  
**Dunsmuir NE (3844ft):** Temps: 62F/ 76F, RH: 50% / 29%, Peak Wind: SSE 11 G20mph @ 1530 PDT

# Division/Group Assignment List (ICS 204 WF)

Controlled Unclassified Information//Basic

<b>1. Incident Name:</b>				<b>3.</b>			
ROOT				<b>Branch:</b>		<b>Division/Group:</b>  <div style="font-size: 24pt; font-weight: bold; text-align: center;">A/F</div>	
<b>2. Operational Period:</b>							
Date/Time From: 09/07/2025 0700      SUN		Date/Time To: 09/08/2025 0700      MON					
<b>4. Operations Personnel</b>							
<b>FIELD OPERATIONS CHIEF</b>		BEASLEY, MARCUS		<b>DIVISION/GROUP SUPERVISOR</b>		CROUSSER, DAVE	
<b>DIVISION/GROUP SUPERVISOR</b>		WAINWRIGHT, GREG (T)					
<b>5. Resources Assigned this Period</b>							
Strike Team / Task Force / Resource Designator		LWD	Leader	Number Persons	Drop Off PT./Time		Pick Up PT./Time
C-17 CRW2 - ANCHOR POINT		09/18	VENANCIO RUEVA	20	MCCLLOUD ICP/0700		MCCLLOUD ICP/1900
C-( ) CRW2 - AFS C16		09/09	JAVIER GUZMAN	20	MCCLLOUD ICP/0700		MCCLLOUD ICP/1900
C-29 CRW2 - OC 21		09/16	RUDY PINA / YOSHI (T)	20	MCCLLOUD ICP/0700		MCCLLOUD ICP/1900
C-16 CRW2 - BLUE MOUNTAIN			OCTAVIO MACIAL		MCCLLOUD ICP/0700		MCCLLOUD ICP/1900
E-34 ENG3 - CABDF 352		09/16		5	MCCLLOUD ICP/0700		MCCLLOUD ICP/1900
E-37 ENG5 - KSRNX B71		09/16			MCCLLOUD ICP/0700		MCCLLOUD ICP/1900
E-25 ENG6 - SANTA RITA 150		09/13	TURNER	3	MCCLLOUD ICP/0700		MCCLLOUD ICP/1900
E-70 ENG6 - PACIFIC OASIS		09/09	MARCUS LEWIS	3	MCCLLOUD ICP/0700		MCCLLOUD ICP/1900
E-38 ENG3 - NORTH FORK FD E213		09/16	TRENTON RIGGS	5	MCCLLOUD ICP/0700		MCCLLOUD ICP/1900
E-33 ENG3 - NORTH METRO FD 25		09/16	WILLIAM CASTONGUAY	5	MCCLLOUD ICP/0700		MCCLLOUD ICP/1900
E-28 ENG6 - COARF 653		09/18		3	MCCLLOUD ICP/0700		MCCLLOUD ICP/1900
E-83 WTS2 - TABLE MOUNTAIN		09/17	MATT COLTON	1	MCCLLOUD ICP/0700		MCCLLOUD ICP/1900
E-141 WTS2 - TABLE MOUNTAIN FORESTRY, LLC		09/17	CHUCK FISCHER	1	MCCLLOUD ICP/0700		MCCLLOUD ICP/1900
E-85 WTS2 - LONE STAR		09/17	MARK HAMILTON	1	MCCLLOUD ICP/0700		MCCLLOUD ICP/1900
E-142 WTS2 - KIRACK		09/18	BRANDON DEGROOT	1	MCCLLOUD ICP/0700		MCCLLOUD ICP/1900
E-3 DZR2 - CASHF D79 #			RYAN JONES	2	MCCLLOUD ICP/0700		MCCLLOUD ICP/1900
O-24 FMOD - NORTH ZONE FALLERS, INC.		09/20	CARL HALL	2	MCCLLOUD ICP/0700		MCCLLOUD ICP/1900
O-2 TFLD AGBALOG		09/15	AGBALOG, BRYAN	1	MCCLLOUD ICP/0700		MCCLLOUD ICP/1900
O-3 TFLD BOBBA		09/15	BOBBA, DILEEP	1	MCCLLOUD ICP/0700		MCCLLOUD ICP/1900
<b>8. Division/Group Communication Summary</b>							
Function	Channel	RX Frequency N/W	RX Tone/NAC	TX Frequency N/W	TX Tone/NAC	Mode	
COMMAND	2	169.7500	T5 146.2	167.1000	T5146.2	A	
COMMAND	3	173.0375	T5 146.2	167.3250	T5146.2	A	
TACTICAL	9	166.7750	T5146.2	166.7750	T5146.2	A	
TACTICAL	5	168.0500	T5146.2	168.0500	T5146.2	A	
<b>9. Prepared By (Resource Unit Leader)</b>		<b>Approved By (Planning Section Chief)</b>			<b>Date</b>		<b>Time</b>
RACHEL FONVIELLE		RACHEL FONVIELLE			09/06/2025		2000

# Division/Group Assignment List (ICS 204 WF)

Controlled Unclassified Information//Basic

1. Incident Name:				3.			
ROOT				Branch:		Division/Group:  <b>A/F</b>	
2. Operational Period:							
Date/Time From: 09/07/2025 0700      SUN		Date/Time To: 09/08/2025 0700      MON					
4. Operations Personnel							
FIELD OPERATIONS CHIEF		BEASLEY, MARCUS		DIVISION/GROUP SUPERVISOR		CROUSSER, DAVE	
DIVISION/GROUP SUPERVISOR		WAINWRIGHT, GREG (T)					
5. Resources Assigned this Period							
Strike Team / Task Force / Resource Designator		LWD	Leader	Number Persons	Drop Off PT./Time	Pick Up PT./Time	
O-13 EMTF PRADO		09/16	PRADO, ANTHONY	1	MCCLLOUD ICP/0700	MCCLLOUD ICP/1900	
EMTF CONNER			CONNER	1	MCCLLOUD ICP/0700	MCCLLOUD ICP/1900	
REMS BLACK FLAG		09/19	ROCKY CALDWELL	4	MCCLLOUD ICP/0700	MCCLLOUD ICP/1900	
E-98 AMBO1 - ADVENTURE MEDICS LLC		09/17		2	MCCLLOUD ICP/0700	MCCLLOUD ICP/1900	
O-152.32 SOFF MCCLAIN			HARRY MCCLAIN	1	MCCLLOUD ICP/0700	MCCLLOUD ICP/1900	
O-( ) MOTA			RAMON MOTA	1	MCCLLOUD ICP/0700	MCCLLOUD ICP/1900	
READ HENKLE		09/18	JASON HENKLE	1	MCCLLOUD ICP/0700	MCCLLOUD ICP/1900	
REAF GOLIAS			JULIA GOLIAS	1	MCCLLOUD ICP/0700	MCCLLOUD ICP/1900	
6. Control Operations/Work Assignments:							
<p>TASK: Continue mop up 50'-100' interior of fire's edge and patrol established control lines. Monitor and remain initial attack ready for additional starts within the Temporary Flight Restriction.</p> <p>PURPOSE: Minimize impacts to Castle Creek Road, FS Road 40 and 44, the community of McCloud, and all private and federal lands within the impacted area.</p> <p>END STATE: No additional growth beyond established control lines with mitigation of smoke concerns and heat.</p>							
7. Special Instructions:							
Resources marked with # are identified for Initial Attack.							
8. Division/Group Communication Summary							
Function	Channel	RX Frequency N/W	RX Tone/NAC	TX Frequency N/W	TX Tone/NAC	Mode	
COMMAND	2	169.7500	T5 146.2	167.1000	T5146.2	A	
COMMAND	3	173.0375	T5 146.2	167.3250	T5146.2	A	
TACTICAL	9	166.7750	T5146.2	166.7750	T5146.2	A	
TACTICAL	5	168.0500	T5146.2	168.0500	T5146.2	A	
9. Prepared By (Resource Unit Leader)			Approved By (Planning Section Chief)			Date	Time
RACHEL FONVIELLE			RACHEL FONVIELLE			09/06/2025	2000

# Division/Group Assignment List (ICS 204 WF)

## Controlled Unclassified Information//Basic

<b>1. Incident Name:</b>				<b>3.</b>			
ROOT				Branch:		Division/Group:  <div style="text-align: center; font-weight: bold;">L</div>	
<b>2. Operational Period:</b>							
Date/Time From: 09/07/2025 0700      SUN		Date/Time To: 09/08/2025 0700      MON					
<b>4. Operations Personnel</b>							
FIELD OPERATIONS CHIEF		BEASLEY, MARCUS		BRANCH DIRECTOR			
DIVISION/GROUP SUPERVISOR		MASON TURNER (T)		DIVISION/GROUP SUPERVISOR		CHRIS DUNN (T) #	
<b>5. Resources Assigned this Period</b>							
Strike Team / Task Force / Resource Designator	LWD	Leader	Number Persons	Drop Off PT./Time	Pick Up PT./Time		
C-3 CRW1 - MIDNIGHT SUN IHC	09/14	ANDREW CULBERTSON	25	MCCLLOUD ICP/0700	MCCLLOUD ICP/1900		
C-6 CR2I - ELK MT	09/15	WILLIAM MARCKS	19	MCCLLOUD ICP/0700	MCCLLOUD ICP/1900		
C-22 CRW2 ALPINE 590		PEDRO SILVA	20	MCCLLOUD ICP/0700	MCCLLOUD ICP/1900		
E-31 ENG6 - WIWIS 0570-WAU 61	09/15		3	MCCLLOUD ICP/0700	MCCLLOUD ICP/1900		
E-36 ENG6 - NAVAJO- AZNAA 3661	09/16	TONY WILLIAMS	3	MCCLLOUD ICP/0700	MCCLLOUD ICP/1900		
E-79 WTS2 - FORTNER EXCAVATION, INC.	09/16	DANNY JONES	1	MCCLLOUD ICP/0700	MCCLLOUD ICP/1900		
E-82 WTS2 - LARSEN'S WATER TRUCK	09/16	RANDY MARTIN	1	MCCLLOUD ICP/0700	MCCLLOUD ICP/1900		
E-80 WTS2 - WESTERN WATERS INC	09/16	JOHN HOLLMER	1	MCCLLOUD ICP/0700	MCCLLOUD ICP/1900		
E-148 WTS2 WILMORE AG	09/17	FRANK PONKE	1	MCCLLOUD ICP/0700	MCCLLOUD ICP/1900		
E-144 WTS2 TURNER	09/19	KEEGAN GUNDERSON	1	MCCLLOUD ICP/0700	MCCLLOUD ICP/1900		
O-13 EMTF PRADO	09/16	PRADO, ANTHONY	1	MCCLLOUD ICP/0700	MCCLLOUD ICP/1900		
O-124 EMPF CONNOR	09/18	CONNOR BORUM	1	MCCLLOUD ICP/0700	MCCLLOUD ICP/1900		
O-145 REMS BLACK FLAG	09/19	ROCKY CALDWELL	4	MCCLLOUD ICP/0700	MCCLLOUD ICP/1900		
E-98 AMB2 - ADVENTURE MEDICS LLC	09/17	JAKE JONES	2	MCCLLOUD ICP/0700	MCCLLOUD ICP/1900		
O-6 SOFF GROGAN	09/12	GROGAN, CHRIS	1	MCCLLOUD ICP/0700	MCCLLOUD ICP/1900		
O-( ) SOFF PAYNE		PAYEN (T)	1	MCCLLOUD ICP/0700	MCCLLOUD ICP/1900		
<b>6. Control Operations/Work Assignments:</b>							
TASK: Continue mop up 250'-300' interior of fire's edge and patrol established control lines. Monitor and remain initial attack ready for additional starts within the Temporary Flight Restriction.							
<b>8. Division/Group Communication Summary</b>							
Function	Channel	RX Frequency N/W	RX Tone/NAC	TX Frequency N/W	TX Tone/NAC	Mode	
COMMAND	3	173.0375	T5 146.2	167.3250	T5146.2	A	
COMMAND	2	169.7500	T5 146.2	167.1000	T5146.2	A	
TACTICAL	6	168.2000	T5146.2	168.2000	T5146.2	A	
<b>9. Prepared By (Resource Unit Leader)</b>		<b>Approved By (Planning Section Chief)</b>			<b>Date</b>	<b>Time</b>	
RACHEL FONVIELLE		RACHEL FONVIELLE			09/06/2025	2000	

# Division/Group Assignment List (ICS 204 WF)

Controlled Unclassified Information//Basic

<b>1. Incident Name:</b>				<b>3.</b>			
ROOT				<b>Branch:</b>		<b>Division/Group:</b>  L	
<b>2. Operational Period:</b>							
Date/Time From: 09/07/2025 0700      SUN		Date/Time To: 09/08/2025 0700      MON					
<b>4. Operations Personnel</b>							
<b>FIELD OPERATIONS CHIEF</b>		BEASLEY, MARCUS		<b>BRANCH DIRECTOR</b>			
<b>DIVISION/GROUP SUPERVISOR</b>		MASON TURNER (T)		<b>DIVISION/GROUP SUPERVISOR</b>		CHRIS DUNN (T)	
<b>6. Control Operations/Work Assignments:</b>							
<p>PURPOSE: Minimize impacts to Castle Creek Road, FS Road 40 and 44, the community of McCloud, and all private and federal lands within the impacted area.</p> <p>END STATE: No additional growth beyond established control lines with mitigation of smoke concerns and heat.</p>							
<b>7. Special Instructions:</b>							
Resources marked with # are identified for Initial Attack.							
<b>8. Division/Group Communication Summary</b>							
Function	Channel	RX Frequency N/W	RX Tone/NAC	TX Frequency N/W	TX Tone/NAC	Mode	
COMMAND	3	173.0375	T5 146.2	167.3250	T5146.2	A	
COMMAND	2	169.7500	T5 146.2	167.1000	T5146.2	A	
TACTICAL	6	168.2000	T5146.2	168.2000	T5146.2	A	
<b>9. Prepared By (Resource Unit Leader)</b>		<b>Approved By (Planning Section Chief)</b>			<b>Date</b>	<b>Time</b>	
RACHEL FONVIELLE		RACHEL FONVIELLE			09/06/2025	2000	

# Division/Group Assignment List (ICS 204 WF)

## Controlled Unclassified Information//Basic

<b>1. Incident Name:</b>				<b>3.</b>			
ROOT				<b>Branch:</b>		<b>Division/Group:</b>  T	
<b>2. Operational Period:</b>							
Date/Time From: 09/07/2025 0700      SUN		Date/Time To: 09/08/2025 0700      MON					
<b>4. Operations Personnel</b>							
FIELD OPERATIONS CHIEF		BEASLEY, MARCUS		BRANCH DIRECTOR			
DIVISION/GROUP SUPERVISOR		WALTON, DAN		DIVISION/GROUP SUPERVISOR		SISK, WESLEY (T)	
<b>5. Resources Assigned this Period</b>							
Strike Team / Task Force / Resource Designator	LWD	Leader	Number Persons	Drop Off PT./Time	Pick Up PT./Time		
C-9 CRW1 MT TAYLOR #	09/13	HOWARD KENNY	21	MCCLLOUD ICP/0700	MCCLLOUD ICP/1900		
C-5 CR2I - IRON MOUNTAIN - CAENF	09/16	KEVIN BREITWIESER	20	MCCLLOUD ICP/0700	MCCLLOUD ICP/1900		
C-7 CR2I FIRESTORM 5	09/16	GENE LOPEZ	20	MCCLLOUD ICP/0700	MCCLLOUD ICP/1900		
C-8 CR2I - FIRESTORM WILDLAND FIRE NCC 7B	09/16	CHRIS SPRAGUE	20	MCCLLOUD ICP/0700	MCCLLOUD ICP/1900		
E-60 ENG3 LORAX	09/09	IVAN REED	3	MCCLLOUD ICP/0700	MCCLLOUD ICP/1900		
E-35 ENG3 - LOS PINOS FPD 25 ENGINE 88 #	09/15	ANDY BARBER	5	MCCLLOUD ICP/0700	MCCLLOUD ICP/1900		
E-21 ENG3 IAR05	09/12	BLAIN PHILLIPS	4	MCCLLOUD ICP/0700	MCCLLOUD ICP/1900		
E-32 ENG5 - NVCCFX CARSON CITY FD B54	09/16	ANDERSON MUELLER	4	MCCLLOUD ICP/0700	MCCLLOUD ICP/1900		
E-14 ENG6 - NDNDS E5275	09/10	RYAN ATKANEN	4	MCCLLOUD ICP/0700	MCCLLOUD ICP/1900		
E-27 ENG6 - IDCTF E632 #	09/16	AUSTIN NIELSON	5	MCCLLOUD ICP/0700	MCCLLOUD ICP/1900		
E-81 WTS2 - DUNLAP	09/16	CHASE WALKUP	1	MCCLLOUD ICP/0700	MCCLLOUD ICP/1900		
E-76 WTS2 - INGRAM	09/17	MATTHEW SMILEY	1	MCCLLOUD ICP/0700	MCCLLOUD ICP/1900		
E-17 MBLP - PUMPZILLA	09/14	WALT MCGUINESS	2	MCCLLOUD ICP/0700	MCCLLOUD ICP/1900		
O-25 FMOD - BENNETT TIMBER CUTTING LLC	09/15	JENNINGS BLAKE	2	MCCLLOUD ICP/0700	MCCLLOUD ICP/1900		
O-13 EMTF PRADO	09/16	ANTHONY PRADO	1	MCCLLOUD ICP/0700	MCCLLOUD ICP/1900		
O-124 EMPF CONNOR	09/18	CONNOR BORUM	1	MCCLLOUD ICP/0700	MCCLLOUD ICP/1900		
O-145 REMS BLACK FLAG	09/19	ROCKY CALDWELL	4	MCCLLOUD ICP/0700	MCCLLOUD ICP/1900		
E-86 AMBO1 - WILDERNESS MEDICS, INC. - C03127	09/17	JAKE JONES	2	MCCLLOUD ICP/0700	MCCLLOUD ICP/1900		
O-6 SOFF GROGAN	09/12	CHRIS GROGAN	1	MCCLLOUD ICP/0700	MCCLLOUD ICP/1900		
<b>8. Division/Group Communication Summary</b>							
Function	Channel	RX Frequency N/W	RX Tone/NAC	TX Frequency N/W	TX Tone/NAC	Mode	
COMMAND	2	169.7500	T5 146.2	167.1000	T5146.2	A	
COMMAND	3	173.0375	T5 146.2	167.3250	T5146.2	A	
TACTICAL	7	168.6000	T5146.2	168.6000	T5146.2	A	
<b>9. Prepared By (Resource Unit Leader)</b>		<b>Approved By (Planning Section Chief)</b>			<b>Date</b>	<b>Time</b>	
RACHEL FONVIELLE		RACHEL FONVIELLE			09/06/2025	2000	

# Division/Group Assignment List (ICS 204 WF)

Controlled Unclassified Information//Basic

<b>1. Incident Name:</b>				<b>3.</b>			
ROOT				<b>Branch:</b>		<b>Division/Group:</b>  T	
<b>2. Operational Period:</b>							
Date/Time From: 09/07/2025 0700      SUN		Date/Time To: 09/08/2025 0700      MON					
<b>4. Operations Personnel</b>							
<b>FIELD OPERATIONS CHIEF</b>		BEASLEY, MARCUS		<b>BRANCH DIRECTOR</b>			
<b>DIVISION/GROUP SUPERVISOR</b>		WALTON, DAN		<b>DIVISION/GROUP SUPERVISOR</b>		SISK, WESLEY (T)	
<b>5. Resources Assigned this Period</b>							
Strike Team / Task Force / Resource Designator		LWD	Leader	Number Persons	Drop Off PT./Time	Pick Up PT./Time	
O-( ) SOF3 - PAYNE			PAYNE (T)	1	MCCLLOUD ICP/0700	MCCLLOUD ICP/1900	
O-156 READ GIBSON			NANCY GIBSON	1	MCCLLOUD ICP/0700	MCCLLOUD ICP/1900	
O-157 REAF GREGORY			DANIELLE GREGORY	1	MCCLLOUD ICP/0700	MCCLLOUD ICP/1900	
<b>6. Control Operations/Work Assignments:</b>							
<p><b>TASK:</b> Continue mop up 50'-100' interior of fire's edge and patrol established control lines. Monitor and remain initial attack ready for additional starts within the Temporary Flight Restriction.</p> <p><b>PURPOSE:</b> Minimize impacts to Castle Creek Road, FS Road 40 and 44, the community of McCloud, and all private and federal lands within the impacted area.</p> <p><b>END STATE:</b> No additional growth beyond established control lines with mitigation of smoke concerns and heat.</p>							
<b>7. Special Instructions:</b>							
Resources marked with # are identified for Initial Attack.							
<b>8. Division/Group Communication Summary</b>							
Function	Channel	RX Frequency N/W	RX Tone/NAC	TX Frequency N/W	TX Tone/NAC	Mode	
COMMAND	2	169.7500	T5 146.2	167.1000	T5146.2	A	
COMMAND	3	173.0375	T5 146.2	167.3250	T5146.2	A	
TACTICAL	7	168.6000	T5146.2	168.6000	T5146.2	A	
<b>9. Prepared By (Resource Unit Leader)</b>			<b>Approved By (Planning Section Chief)</b>		<b>Date</b>		<b>Time</b>
RACHEL FONVIELLE			RACHEL FONVIELLE		09/06/2025		2000

# Division/Group Assignment List (ICS 204 WF)

Controlled Unclassified Information//Basic

1. Incident Name:			3.			
ROOT			Branch:		Division/Group:  <b>NIGHT A/F/L/T</b>	
2. Operational Period:						
Date/Time From: 09/07/2025 0700      SUN		Date/Time To: 09/08/2025 0700      MON				
4. Operations Personnel						
FIELD OPERATIONS CHIEF		MARCUS BEASLEY		BRANCH DIRECTOR		
DIVISION/GROUP SUPERVISOR		MATTSON, ERICK				
5. Resources Assigned this Period						
Strike Team / Task Force / Resource Designator	LWD	Leader	Number Persons	Drop Off PT./Time	Pick Up PT./Time	
E-12 ENG3 - CAPNF E315	09/15	CASEY SIMONI	5			
O-140 EMTF MAXWELL	09/18	MAXWELL, TIMOTHY E	1			
E-98 AMBO2 - WILDERNESS MEDICS	09/17	KONNER KENNEDY	2			
O-5 SOFF MARTINEZ	09/06	MARTINEZ, ABELARDO	1			
6. Control Operations/Work Assignments:						
<p>TASK: Continue mop up 20'-50' interior of fire's edge and patrol established control lines. Monitor and remain initial attack ready for additional starts within the Temporary Flight Restriction.</p> <p>PURPOSE: Minimize impacts to Castle Creek Road, FS Road 40 and 44, the community of McCloud, and all private and federal lands within the impacted area.</p> <p>END STATE: No additional growth beyond established control lines with mitigation of smoke concerns and heat.</p>						
7. Special Instructions:						
<p>Command FS SHF-R will be utilized for IWI response after 2100.</p> <p>Resources marked with # are identified for Initial Attack.</p>						
8. Division/Group Communication Summary						
Function	Channel	RX Frequency N/W	RX Tone/NAC	TX Frequency N/W	TX Tone/NAC	Mode
COMMAND	1	171.5750		165.0125	T6156.7	A
COMMAND	2	169.7500	T5 146.2	167.1000	T5146.2	A
COMMAND	3	173.0375	T5 146.2	167.3250	T5146.2	A
TACTICAL	8	166.7250	T5146.2	166.7250	T5146.2	A
9. Prepared By (Resource Unit Leader)		Approved By (Planning Section Chief)		Date		Time
RACHEL FONVIELLE		RACHEL FONVIELLE		09/06/2025		2000



**Division/Group Assignment List (ICS 204 WF)**  
Controlled Unclassified Information//Basic

<b>1. Incident Name:</b>				<b>3.</b>			
ROOT				<b>Branch:</b>		<b>Division/Group:</b>  <b>STAGING</b>	
<b>2. Operational Period:</b>							
Date/Time From: 09/07/2025 0700      SUN		Date/Time To: 09/08/2025 0700      MON					
<b>4. Operations Personnel</b>							
<b>FIELD OPERATIONS CHIEF</b>		MARCUS BEASLEY		<b>BRANCH DIRECTOR</b>			
<b>DIVISION/GROUP SUPERVISOR</b>							
<b>5. Resources Assigned this Period</b>							
Strike Team / Task Force / Resource Designator		LWD	Leader	Number Persons	Drop Off PT./Time	Pick Up PT./Time	
E-16 DZR2 - CATTANEO #		09/15	JON ELITS	1	MCCLLOUD ICP/0700	MCCLLOUD ICP/1900	
E-15 DZR2 - EVANS BROTHERS #		09/15	DOUG EVANS	2	MCCLLOUD ICP/0700	MCCLLOUD ICP/1900	
O-33 HEQB BISAGNO #		09/16	BISAGNO, NICHOLAS	1	MCCLLOUD ICP/0700	MCCLLOUD ICP/1900	
O-31 HEQB URRUTIA #		09/08	URRUTIA, FELIX	1	MCCLLOUD ICP/0700	MCCLLOUD ICP/1900	
<b>6. Control Operations/Work Assignments:</b>  Remain prepared for initial attack.							
<b>7. Special Instructions:</b>  Resources marked with # are identified for Initial Attack.							
<b>8. Division/Group Communication Summary</b>							
Function	Channel	RX Frequency N/W	RX Tone/NAC	TX Frequency N/W	TX Tone/NAC	Mode	
COMMAND							
TACTICAL							
LOGISTICS							
AIR TO GROUND							
<b>9. Prepared By (Resource Unit Leader)</b>			<b>Approved By (Planning Section Chief)</b>			<b>Date</b>	<b>Time</b>

[illegible]

INCIDENT RADIO COMMUNICATIONS PLAN				Incident Name		Date/Time Prepared			Operational Period Date/Time		
				ROOT		9/6/2025 14:42			9/7/2025 0700 to 9/8/2025 0700		
Zn / Ch	Function	Channel Name/Trunked Talkgroup	Assignment	RX Freq	RX Tone/NAC	TX Freq	TX Tone/NAC	Mode A, D, M	Remarks		
1	Command	FS SHF-R	Night Emergency	171.5750		165.0125	T6 156.7	A	FS Dispatch		
2	Command	NIFC C5	All DIVS	169.7500	T5 146.2	167.1000	T5 146.2	A			
3	Command	NIFC C12	All DIVS	173.0375	T5 146.2	167.3250	T5 146.2	A			
4	Command	NIFC C71	N/A	171.8625	T5 146.2	164.6000	T5 146.2	A	NOT AVAILABLE		
5	Tactical	NIFC T1	DIV F	168.0500	T5 146.2	168.0500	T5 146.2	A			
6	Tactical	NIFC T2	DIV L	168.2000	T5 146.2	168.2000	T5 146.2	A			
7	Tactical	NIFC T3	DIV T	168.6000	T5 146.2	168.6000	T5 146.2	A			
8	Tactical	NIFC T4	NIGHT	166.7250	T5 146.2	166.7250	T5 146.2	A			
9	Tactical	NIFC T5	DIV A	166.7750	T5 146.2	166.7750	T5 146.2	A			
10	Tactical	NIFC T6	AVAILABLE	168.2500	T5 146.2	168.2500	T5 146.2	A			
11	Tactical	VFIRE 23	AVAILABLE	154.2950	T6 156.7	154.2950	T6 156.7	A			
12	Tactical	VFIRE 24	AVAILABLE	154.2725	T6 156.7	154.2725	T6 156.7	A			
13	A/G	A/G CMD	ALL DIVS	164.0250		164.0250		A			
14	A/G	A/G TAC	ALL DIVS	169.0000		169.0000		A			
15	CALCORD	MEDICAL	ALL DIVS	156.0750	T6 156.7	156.0750	T6 156.7	A	MEDIVAC/MEDICAL		
16	AIRGUARD	EMERGENCY	ALL DIVS	168.6250		168.6250	T1 110.9	A	EMERGENCY		
17											
18											
19											
20	AIRGUARD	EMERGENCY	ALL DIVS	168.6250		168.6250	110.9	A	EMERGENCY		

Prepared By (Communications Unit Leader)  
Lee Weaver COML(T)

Incident Location  
County

Latitude, Longitude

Deviaton is assumed to be narrow band unless otherwise noted in the remarks. Mode refers to either "A" (analog), "D" (digital) or "M" (mixed mode).  
**Utilization of any frequency other than those listed on this form are not authorized.**

INCIDENT RADIO COMMUNICATIONS PLAN				Incident Name		Date/Time Prepared			Operational Period Date/Time			
Initial Attack							9/5/2025 13:00			9/6/2025 0700 to 9/7/2025 0700		
Zn / Ch	Function	Channel Name/Trunked Talkgroup	Assignment	RX Freq	RX Tone/NAC	TX Freq	TX Tone/NAC	Mode A, D, M	Remarks			
1	Command	SMMU		166.9875N		166.9875N	T7 167.9	A				
2	Command	SHF-R		171.5750N		165.0125N	T6 156.7	A				
3	Tactical	R5 T4		166.5500N		166.5500N		A				
4	Tactical	R5 T5		167.1125N		167.1125N		A				
5	Tactical	R5 T7		167.9625N		167.9625N		A				
6	Complex	SRVCRPT		171.5000		164.8250	T6 156.7	A				
7	Command	SKU		151.3250	T6 156.7	159.3600	T7 167.9	A				
8	Tactical	CDF T7		151.3400	T16 192.8	151.3400	T16 192.8	A				
9	Tactical	CDF T8		151.3700	T16 192.8	151.3700	T16 192.8	A				
10	Tactical	CDF T9		151.3850	T16 192.8	151.3850	T16 192.8	A				
11	Command	CDF C10		151.1900	T8 103.5	159.2250	T2 123.0	A	ANTELOPE			
12	Command	SIS CMD		154.2500		156.1050	T7 167.9	A				
13	Medical	CALCORD		156.0750	T6 156.7	156.0750	T6 156.7	A				
14	Tactical	R5 AG08		166.8750		166.8750		A				
15	A/G	A/G 43		167.6000N		167.6000N		A				
16	AIRGUARD	AIRGUARD	ALL DIVS	168.6250		168.6250	110.9	A	EMERGENCY			
17												
18												
19												
20	AIRGUARD	AIRGUARD	ALL DIVS	168.6250		168.6250	110.9	A	EMERGENCY			
Prepared By (Communications Unit Leader)				Incident Location			Latitude, Longitude					
Lee Weaver COML(T)				County								
Deviaton is assumed to be narrow band unless otherwise noted in the remarks. Mode refers to either "A" (analog), "D" (digital) or "M" (mixed mode).										FIRESCOPE 1/18/15 v.7		
Utilization of any frequency other than those listed on this form are not authorized.												

## HEALTH AND SAFETY MESSAGE

***SAFETY*** starts with ***YOU***

For Day/Night Operations: September 7, 2025

**INCIDENT: Root Fire**

Day: Saturday/Sunday Shift: Day/Night

### **Major Hazard and Risk:**

- **Chainsaw operations:** Chainsaw operations on a wildfire presents hazards from falling trees, kickbacks, fatigue, smoke, burned trees, snags, stump holes. Wearing proper PPE, maintaining situational awareness, ensuring escape routes, working in pairs, taking rest breaks, and following safe cutting practices can help prevent accidents.
- **Hazardous Roads:** Narrow roads, steep drop offs, erratic drivers, and operator fatigue are all prevalent on this and other assignments. Watch out!
- **Extended Extraction Times:** Be familiar with the medical plan. Develop a plan on how you would get an injured firefighter out timely. Factor in how rocky terrain, trees, stumps, will reduce the likelihood of utilizing helicopters for a medevac.

**Fire Order of the Day:** Maintain prompt communications with your forces, your supervisor, and adjoining forces.

**Watch Out Situation:** Instructions and assignments not clear.



### **Hazard tree indicators:**

1. Trees have been burning for an extended period
2. High risk tree species (rot and shallow root system)
3. Numerous down trees
4. Dead or broken tips and limbs overhead
5. Accumulation of down limbs
6. Absence of needles, bark or limbs
7. Leaning of hung-up trees

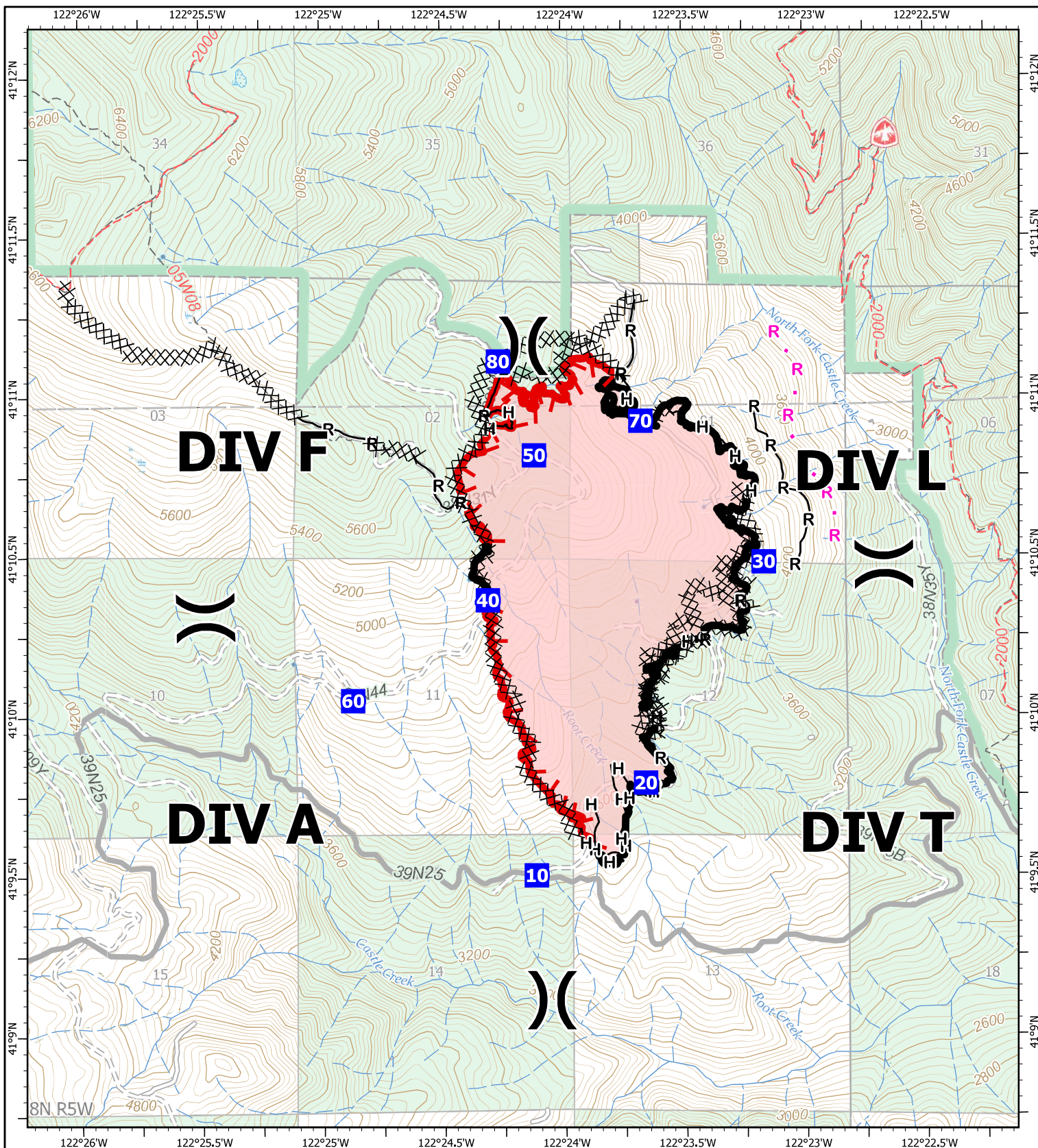
**Thanks, from your Safety Team!!**

(SOF) - Evans, Martinez, McClain, Grogen, Mota, Payne.

SOFC(T) – Leland Bass

**"Managers light a fire under people; Leaders light a fire in people"** Unknown source.





# IAP Map

Root

CA-SHF-001036

09/07/2025

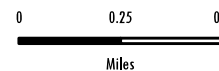
719 acres at 09/05/2025 @ 1300

1:30,000 | GFC INT | 9/6/2025 1954

Acres from IR and GPS

North American 1983 Datum, LatLong Grid

- ( )** Division Break
- Drop Point
- ⌘⌘** Completed Dozer Line
- H** Completed Hand Line
- R** Completed Road as Line
- R ·** Planned Road as Line
- Contained Fire Edge
- └** Uncontained Fire Edge
- Wildfire Perimeter



N





122°7.5'W

# Fire Camp

41°16'N

41°16'N

McCloud River Railroad

McCloud River Railroad  
Ground Support

Top Fill  
Nonpotable  
Water

Camp

Large Truck  
Parking

Fuel

Kitchen

Lunches  
and Ice

Supply

Laundry

Crew Camping

ENG/Crews

Camp

Mill Rd

North St  
North St  
Firenze St

Yeti Atwan Creek

Oran

Beaun

Grey  
Water  
Dump

Overhead Camp

Trailers

OH Packing

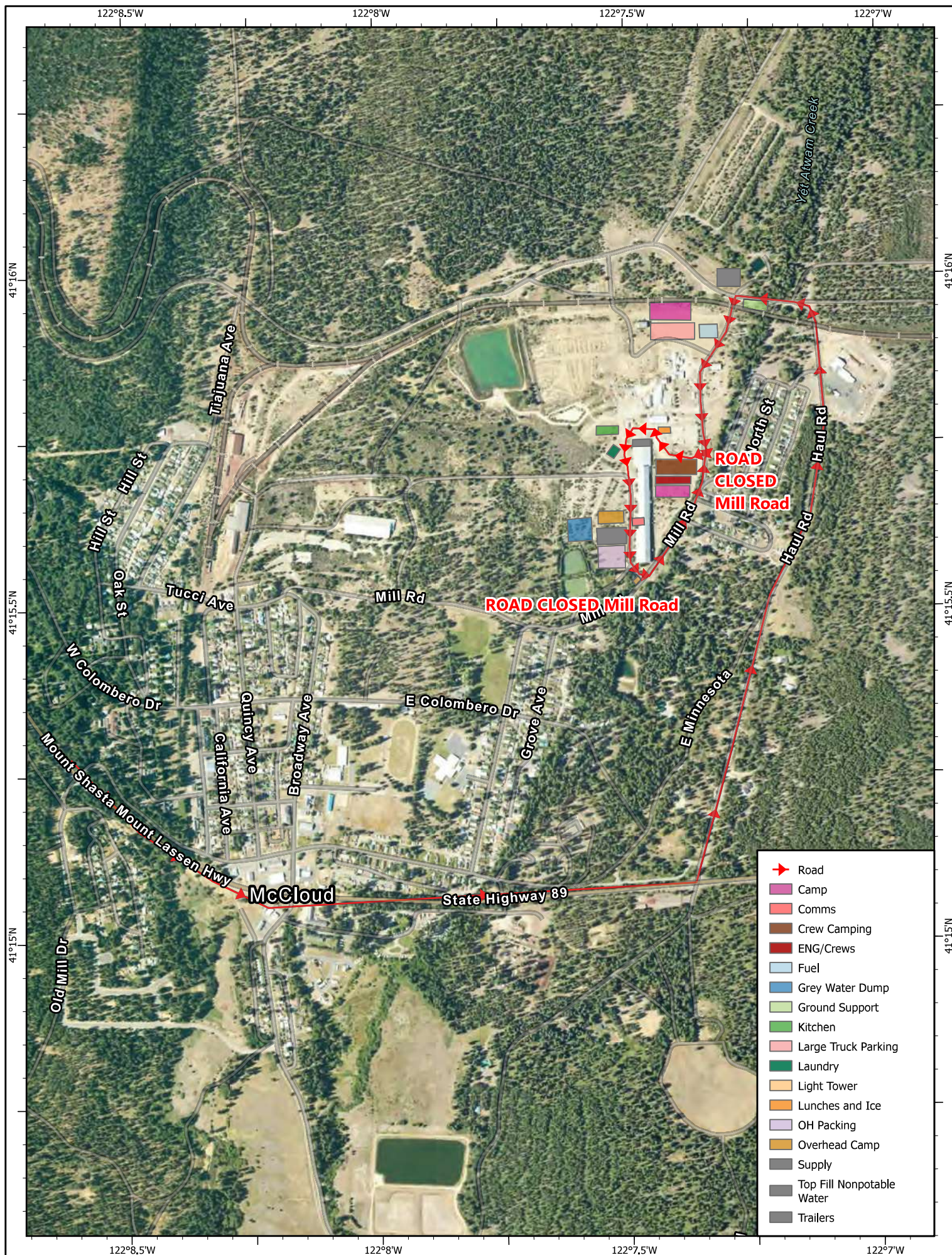
Comms

Light Tower

- Camp
- Comms
- Crew Camping
- ENG/Crews
- Fuel
- Grey Water Dump
- Ground Support
- Kitchen
- Large Truck Parking
- Laundry
- Light Tower
- Lunches and Ice
- OH Packing
- Overhead Camp
- Supply
- Top Fill Nonpotable Water
- Trailers

122°7.5'W







### READ Message

The areas you are helping to protect include various significant natural and cultural resources. There are plants, animals, and cultural history associated with this area that in some cases can only be found here!

Sensitive areas are being identified with yellow & white striped, black letter “EQUIPMENT EXCLUSION ZONE” flagging. In general, these are ground disturbance avoidance zones. Heavy equipment is asked to stay on existing roads and walk through with blades up. Hand treatments are preferred. Please work with the available Resource Advisors if you have questions.





# FINANCE AND CHECK-IN

<b>Incident Name:</b> Root Fire	<b>2. Operational Period:</b> Date From: 09/05/25	Date To: 09/06/25
<b>Incident Number:</b> CA-SHF-001036	Time From: 0700	Time To: 0700

2025.root.finance@firenet.gov

## Finance Documents Needed upon “Check In” (If Not Already Submitted):

### PLEASE EMAIL THE FOLLOWING DOCUMENTS:

**FED Equipment/Crews:**

- Manifest - showing employment type (GS, GW, or WG) or AD rates if applicable
- Inspections
- Casual Hire Forms for any ADs

**Overhead:**

- AD/Casual Hire Form
- If regular Agency please ensure GS, GW, or WG is written on your CTR

**Contract Equipment, Crews, and Overhead:**

- Manifest
- Inspections

**Cooperator:**

- Cooperative Agreement
- Inspections
- Manifest

---

*Submit Shift Tickets and/or Crew Time Reports every day via email*

---

### When emailing finance:

- ❖ Subject line needs to include RO # and Name
- ❖ Ensure your RO# is written on your Shift Tickets and CTRs



## LG/OES Time and Reimbursement (CFAA)

If you are responsible for completing F42's and reimbursement documentation, please ensure you are registered in MARS and have a Username and Password prior to DMOB as ALL F42's will be completed electronically through MARS. Contact the OES Rep prior to leaving camp to ensure your times are completed correctly to avoid any unwanted delays.



Cal OES Check-in



MARS

Cal OES AREP:

Rick Young  
(916) 541-3165

[rick.young@caloes.ca.gov](mailto:rick.young@caloes.ca.gov)



## INFORMATION MESSAGE

<b>Incident Name:</b> Root Fire	<b>2. Operational Period:</b> Date From: 09/05/25	Date To: 09/06/25
<b>Incident Number:</b> CA-SHF-001036	Time From: 0700	Time To: 0700

Please send us your  
pictures from the field.

We want to show the community  
the good work you're doing!  
Please be sure you're **wearing**  
**proper PPE.**

Email to: [2025.root@firenet.gov](mailto:2025.root@firenet.gov)

SCAN TO REGISTER TRAINING ASSIGNMENT!



## CHECKIN & DEMOB ON YOUR DEVICE

To receive a final training packet you must check in and demob using the QR Code. Prior to demob ensure you receive ink in your taskbook and a performance evaluation.

**RIST - Incident Training (916) 581-0148**

## MEDICAL PLAN (ICS 206)

<b>1. Incident Name:</b> ROOT INCIDENT		<b>2. Operational Period:</b> Date From: 09/06/2025 Time From: 0700		<b>Date To:</b> 09/07/2025 <b>Time To:</b> 0700			
<b>3. Medical Aid Stations:</b>							
Name	Location	Contact Number(s)/Frequency	Paramedics on Site?				
MEDICAL STATION	BASE CAMP	478-488-0404	<input type="checkbox"/> Yes <input checked="" type="checkbox"/> No				
ADVENTURE MEDICS	FIRE: AMBO 1 DAY	763-807-5128	<input checked="" type="checkbox"/> Yes <input type="checkbox"/> No				
ADVENTURE MEDICS	FIRE: AMBO 2 Night	520-249-8975	<input checked="" type="checkbox"/> Yes <input type="checkbox"/> No				
Prado	Line Medic Day	831-601-9708	<input checked="" type="checkbox"/> Yes <input type="checkbox"/> No				
Conner	Line Medic Day	805-338-4558	<input checked="" type="checkbox"/> Yes <input type="checkbox"/> No				
Maxwell	Line Medic Night shift	805-368-6982	<input type="checkbox"/> Yes <input checked="" type="checkbox"/> No				
<b>4. Transportation</b> (indicate air or ground):							
Ambulance Service	Location	Contact Number(s)/Frequency	Level of Service				
MT SHASTA AMBULANCE	1020 OAK ST MT SHASTA CA	530-926-3420	<input checked="" type="checkbox"/> ALS <input type="checkbox"/> BLS				
MCCLOUD AMBULANCE	409 TUCCI AVE MCCLOUD CA	530-859-5123	<input type="checkbox"/> ALS <input checked="" type="checkbox"/> BLS				
HOIST 891/892 ARMY	REDDING AIRPORT	DISPATCH	<input checked="" type="checkbox"/> ALS <input type="checkbox"/> BLS				
PHI AIR MEDICAL	REDDING	DISPATCH	<input checked="" type="checkbox"/> ALS <input type="checkbox"/> BLS				
<b>5. Hospitals:</b>							
Hospital Name	Address, Latitude & Longitude if Helipad	Contact Number(s)/Frequency	Travel Time		Trauma Center	Burn Center	Helipad
			Air	Ground			
MERCY MEDICAL	914 PINE ST MT SHASTA	530-926-6111	10 MIN	30 MIN	<input checked="" type="checkbox"/> Yes Level: 3	<input type="checkbox"/> Yes <input type="checkbox"/> No	<input checked="" type="checkbox"/> Yes <input type="checkbox"/> No
MERCY MEDICAL	2175 ROSALINE AVE REDDING	530-225-6000	25 MIN	2 HRS	<input checked="" type="checkbox"/> Yes Level: 2	<input type="checkbox"/> Yes <input type="checkbox"/> No	<input checked="" type="checkbox"/> Yes <input type="checkbox"/> No
SHASTA REGIONAL MC	1100 BUTTE ST REDDING	530-244-5400	25	2 HRS	<input checked="" type="checkbox"/> Yes Level: 3	<input type="checkbox"/> Yes <input type="checkbox"/> No	<input checked="" type="checkbox"/> Yes <input type="checkbox"/> No
UC DAVIS MC	2315 STOCKTON RD SACRAMENTO	916-734-3636	1.5 HR	1 HR	<input checked="" type="checkbox"/> Yes Level: 1	<input type="checkbox"/> Yes <input type="checkbox"/> No	<input checked="" type="checkbox"/> Yes <input type="checkbox"/> No
					<input type="checkbox"/> Yes Level: _____	<input checked="" type="checkbox"/> Yes <input type="checkbox"/> No	<input type="checkbox"/> Yes <input type="checkbox"/> No
<b>6. Special Medical Emergency Procedures:</b> Due to remoteness of fire and number of resources that could be pulled to assist injured to a transport area, hoist will most likely be used on any injury that would cause a large number of resources to disengage. Additionally there are two other air evac services that can be utilized One of which has hoist and nvg capability both ALS staffed.							
<input checked="" type="checkbox"/> Check box if aviation assets are utilized for rescue. If assets are used, coordinate with Air Operations.							
<b>7. Prepared by</b> (Medical Unit Leader): Name: <u>Layne Paulk MEDL(t)</u> Signature: _____							
<b>8. Approved by</b> (Safety Officer): Name: <u>Leland Bass</u> Signature: _____							
ICS 206		IAP Page _____		Date/Time: <u>9/5/2025</u>			

1. Incident Name:		2. Operational Period: Date From: 09/06/2025    Date To: 09/07/2025 Time From: 0700                  Time To: 0700	
3. Name:		4. ICS Position:	
		5. Home Agency (and Unit):	
6. Resources Assigned:			
Name	ICS Position		Home Agency (and Unit)
7. Activity Log:			
Date/Time	Notable Activities		
8. Prepared by: Name: _____ Position/Title: _____ Signature: _____			
ICS 214, Page 1		Date/Time: _____	

# MEDICAL PLAN (ICS 206 WF)

Controlled Unclassified Information//Basic

## Medical Incident Report

**FOR A NON-EMERGENCY INCIDENT, WORK THROUGH CHAIN OF COMMAND TO REPORT AND TRANSPORT INJURED PERSONNEL AS NECESSARY.**

**FOR A MEDICAL EMERGENCY: IDENTIFY ON SCENE INCIDENT COMMANDER BY NAME AND POSITION AND ANNOUNCE "MEDICAL EMERGENCY" TO INITIATE RESPONSE FROM IMT COMMUNICATIONS/DISPATCH.**

**Use the following items to communicate situation to communications/dispatch.**

**1. CONTACT COMMUNICATIONS / DISPATCH** (Verify correct frequency prior to starting report)

Ex: "Communications, Div. Alpha. Stand-by for Emergency Traffic."

**2. INCIDENT STATUS:** Provide incident summary (including number of patients) and command structure.

Ex: "Communications, I have a Red priority patient, unconscious, struck by a falling tree. Requesting air ambulance to Forest Road 1 at (Lat./Long.) This will be the Trout Meadow Medical, IC is TFLD Jones. EMT Smith is providing medical care."

Severity of Emergency / Transport Priority	<input type="checkbox"/> <b>RED / PRIORITY 1</b> Life or limb threatening injury or illness. Evacuation need is <b>IMMEDIATE</b> Ex: Unconscious, difficulty breathing, bleeding severely, 2° – 3° burns more than 4 palm sizes, heat stroke, disoriented. <input type="checkbox"/> <b>YELLOW / PRIORITY 2</b> Serious Injury or illness. Evacuation may be <b>DELAYED</b> if necessary. Ex: Significant trauma, unable to walk, 2° – 3° burns not more than 1-3 palm sizes. <input type="checkbox"/> <b>GREEN / PRIORITY 3</b> Minor Injury or illness. <b>Non-Emergency transport</b> Ex: Sprains, strains, minor heat-related illness.	
Nature of Injury or Illness & Mechanism of Injury		Brief Summary of Injury or Illness (Ex: Unconscious, Struck by Falling Tree)
Transport Request		Air Ambulance / Short Haul/Hoist Ground Ambulance / Other
Patient Location		Descriptive Location & Lat. / Long. (WGS84)
Incident Name		Geographic Name + "Medical" (Ex: Trout Meadow Medical)
On-Scene Incident Commander		Name of on-scene IC of Incident within an Incident (Ex: TFLD Jones)
Patient Care		Name of Care Provider (Ex: EMT Smith)

**3. INITIAL PATIENT ASSESSMENT:** Complete this section for each patient as applicable (start with the most severe patient)

Patient Assessment: See IRPG page 106

Treatment:

**4. TRANSPORT PLAN:**

Evacuation Location (if different): (Descriptive Location (drop point, intersection, etc.) or Lat. / Long.) Patient's ETA to Evacuation Location:

Helispot / Extraction Site Size and Hazards:

**5. ADDITIONAL RESOURCES / EQUIPMENT NEEDS:**

Example: Paramedic/EMT, Crews, Immobilization Devices, AED, Oxygen, Trauma Bag, IV/Fluid(s), Splints, Rope rescue, Wheeled litter, HAZMAT, Extrication

**6. COMMUNICATIONS: Identify State Air/Ground EMS Frequencies and Hospital Contacts as applicable**

Function	Channel Name/Number	Receive (RX)	Tone/NAC *	Transmit (TX)	Tone/NAC *
COMMAND					
AIR-TO-GRND					
TACTICAL					

**7. CONTINGENCY: Considerations:** If primary options fail, what actions can be implemented in conjunction with primary evacuation method? Be thinking ahead.

**8. ADDITIONAL INFORMATION:** Updates/Changes, etc.

**REMEMBER:** Confirm ETA's of resources ordered. Act according to your level of training. Be Alert. Keep Calm. Think Clearly. Act Decisively.