

# INCIDENT ACTION PLAN

# ROOT FIRE

CA-SHF-001036 / 0514 P5S96A



## MONDAY

9/8/2025 AT 0700 - 9/8/2025 AT 1900





# TEAM MISSION

The mission of the Georgia Forestry Commission Incident Management Team is to safely, effectively, and efficiently manage the Root Fire by maintaining a team of skilled, professional, and productive personnel. We will strive to successfully complete our mission and achieve our objectives while creating a positive work environment for all assigned personnel.

Consumption of drugs that alter decision making abilities, such as marijuana, other controlled substances, or alcohol is prohibited. Any form of harassment or discrimination will not be tolerated. All inappropriate behavior will be dealt with promptly and could result in disciplinary action, including reporting back to an individual's home unit. Please report any inappropriate behavior to your supervisor or any team member.

Thank you for your willingness to help protect these communities and resources and enjoy your assignment.

## INCIDENT OBJECTIVES (ICS 202)

<b>1. Incident Name:</b>		<b>2. Operational Period:</b>	
ROOT		Date/Time From: 09/08/2025 0700      MON	Date/Time To: 09/08/2025 1900      MON
<b>3. Objective(s):</b>  <b><u>Management Objectives:</u></b>  <ul style="list-style-type: none"> <li>Provide for emergency personnel and public safety at all times.</li> <li>Protect property, improvements, and infrastructure.</li> <li>Ensure coordinated, timely and accurate release of public information.</li> <li>Foster and maintain relationships with all cooperators and stakeholders.</li> <li>Protect economic, natural, cultural and heritage resources.</li> <li>Maintain fiscal accountability and keep costs commensurate with values at risk.</li> </ul>  <b><u>Control Objectives:</u></b>  <ul style="list-style-type: none"> <li>Keep the fire North of forest road 39N25</li> <li>Keep the fire South of the north boundary of the Castle Craggs Wilderness</li> <li>Keep the fire East of Whalen Summit</li> <li>Keep the fire West of the North Fork of Castle Creek</li> </ul>			
<b>4. Operational Period Command Emphasis:</b>			
<b>General Situational Awareness:</b>  Steep and rugged terrain.  Seasonally dry and receptive fuel beds.			
<b>5. Site Safety Plan Required?</b> Yes <input type="checkbox"/> No <input checked="" type="checkbox"/>			
<b>Approved Site Safety Plan(s) Located at:</b>			
<b>6. Incident Action Plan</b> (the items checked below are included in this Incident Action Plan):  <div style="display: flex; justify-content: space-between;"> <div style="width: 45%;"> <input checked="" type="checkbox"/> ICS 202      <input type="checkbox"/> ICS 207  <input checked="" type="checkbox"/> ICS 203      <input checked="" type="checkbox"/> ICS 208  <input checked="" type="checkbox"/> ICS 204      <input checked="" type="checkbox"/> ICS 220  <input checked="" type="checkbox"/> ICS 205      <input checked="" type="checkbox"/> Map/Chart  <input type="checkbox"/> ICS 205A      <input checked="" type="checkbox"/> Weather Forecast/Tides/Currents  <input checked="" type="checkbox"/> ICS 206         </div> <div style="width: 45%;">           Other Attachments:  <input checked="" type="checkbox"/> ICS 214  <input checked="" type="checkbox"/> FINANCE MESSAGE  <input checked="" type="checkbox"/> INFORMATION MESSAGE  <input type="checkbox"/> </div> </div>			
<b>7. Prepared by:</b> RACHEL FONVIELLE		Position/Title:      PSC3(T)      Signature:	
<b>8. Approved by Incident Commander:</b>		Name:      Danny Gore      Signature:	
<b>ICS 202</b>		<b>IAP Page</b> Date/Time:      09/07/2025 2000	

# ORGANIZATION ASSIGNMENT LIST (ICS 203)

<b>1. Incident Name:</b>		<b>2. Operational Period:</b>	
ROOT		Date/Time From: 09/08/2025 0700      MON	Date/Time To: 09/08/2025 1900      MON
<b>3. Incident Commander(s) and Command Staff:</b>		GROUND SUPPORT UNIT	
IC/UC	JOINER, BLAIR H	KEN BRADY CHAD BRACKIN (T)	
IC/UC	GORE, DANIEL G	COMMUNICATIONS UNIT	
IC/UC	BACON, MATTHEW (T)	MARK SPANN LEE WEAVER	
SAFETY OFFICER	LELAND BASS	SUPPLY UNIT	
INFORMATION OFFICER	PATRICIA STOCKETT	FACILITIES UNIT	
MEDICAL	LAYNE PAULK (T)	GROUND SUPPORT UNIT	
LIAISON OFFICER	STEPHEN SPRADLEY	FOOD UNIT	
LIAISON OFFICER	BRAY ADDISON	<b>7. Operations Section:</b>	
LIAISON OFFICER	BRIAN RAMSEY	FIELD OPERATIONS	MARCUS BEASLEY
<b>4. Agency/Organization Representative(s):</b>		PLANNING OPS	TROY HELMS
<b>Agency/Organization</b>	<b>Name</b>		
AGENCY ADMINISTRATOR	BEN SUNDAL	DIVISION/GROUP	A/F      DAVE CROUSER / GREG WAINWRIGHT (T)
AGENCY ADMINISTRATOR	JOE RODAME (T)	DIVISION/GROUP	L      MASON TURNER(T) / CHRIS DUNN (T)
CALFIRE SHU	TROY VELIN	DIVISION/GROUP	T      DAN WALTON/ WESLEY SISK (T)
CALFIRE SKU	JAKE BURGESS	DIVISION/GROUP	
CASTLE CRAHS STATE PARK	TODD JONES	<b>7b. Air Operations Branch:</b>	
SHASTA COUNTY	MCDANIEL	AIR OPS BRANCH DIRECTOR	
LEAD READ	MONICA LOMAHUKLUH	AIR ATTACK SUPERVISOR	
<b>5. Planning Section:</b>		AIR SUPPORT SUPERVISOR	
CHIEF	ETHAN ROBERTSON	HELICOPTER COORDINATOR	
CHIEF	RACHEL FONVILLE (T)	AIR TANKER COORDINATOR	
DEPUTY		<b>8. Finance/Administration Section:</b>	
RESOURCES UNIT		CHIEF	JOE FINCHER
SITUATION UNIT		TIME UNIT	JESSICA LEE
DOCUMENTATION UNIT		PROCUREMENT UNIT	
DEMOBILIZATION UNIT		COMPENSATION UNIT	
FIRE BEHAVIOR ANALYST		COST UNIT	
HUMAN RESOURCE SPECIALIST			
TRAINING SPECIALIST			
GISS	CAITLIN BOON		
GISS	SYLVIA TOUCHSTONE (T)		
IMET	BRETT LUTZ		
TECHNOLOGY SUPPORT SPECIALIST			
<b>6. Logistics Section:</b>			
CHIEF	WILLIE BOSTON; KRISTY NAUGHTON(t)		
ORDERING	KERRY JOHNSON (T) TUCKER COLEMAN (T)		
FACILITIES UNIT	JASON HARRIS KEVIN MACEWEN		
<b>9. Prepared By:</b>		<b>Signature:</b>	
Name: RACHEL FONVILLE		Position/Title: PSC(T)	
ICS 203	IAP Page	Date/Time: 09/07/2025 2000	



# Root Fire Fire Weather Forecast



**FORECAST NO:** 4  
**PREDICTION FOR:** Mon 0600 – Sat 0600  
**SHIFT DATE:** Sep 8<sup>th</sup>, 2025  
**ISSUED:** 1800 PDT, Sep 7<sup>th</sup>, 2025

**UNIT:** Shasta National Forest  
**Incident Meteorologist:** Brett Lutz  
**Phone:** 916-860-9192

**WEATHER DISCUSSION:** Southerly winds will increase today ahead of an approaching low pressure system with gusts 12-22mph late morning to early afternoon. Showers &, likely, some thunderstorms will begin in the afternoon-early evening, likely beginning between 1500 & 1700 PDT on the Root Fire & during the evening at ICP. Showers are likely overnight through Wed with isolated thunderstorms at times. Total rainfall amounts are likely to be a half inch to an inch by Wed morning. Showers are likely to generally taper off Thu.

---

## Monday (0600-1800 PDT):

- **WEATHER:** Partly cloudy becoming mostly cloudy. Showers & embedded thunderstorms developing in the latter portion of afternoon & evening.
- **WIND (20 FT): Upslope & up drainage, generally** S 5-10 mph with gusts 10-15 mph, becoming SW 7-12 mph w/gusts 12-22 mph afternoon-evening. *(24hr Trend: Up 5 mph in the afternoon)*
- **MAX TEMPERATURES:** 58-68F. *(24hr Max Trend: Down 4-8°F)*
- **MIN RH:** 40-50%. *(24hr Trend: Up 5-15%)*
- **CHANCE OF WETTING RAIN (> or = to 0.10"):** 75% with 0.20" likely by midnight.
- **CHC of LIGHTNING:** 55%
- **MIXING HEIGHT:** Inversion breaking mid-morning. Increasing to 3500ft AGL mid-afternoon.
- **TRANSPORT WIND:** S 5-10 mph morning, then SW 15-20 mph in afternoon.

---

## Monday Night (1800-0600 PDT):

- **WEATHER:** Mostly cloudy w/showers & a slight chance for embedded thunderstorms.
- **WIND (20 FT):** SW 5-10 mph on the ridgetop becoming light & variable, mainly NE 5 mph or less.
- **MIN TEMPERATURES:** 45-55°F.
- **MAX RH:** 90-100%.
- **CHANCE OF WETTING RAIN (> or = to 0.10"):** 65%, storm total likely s 0.25-0.50" by 0600 PDT.
- **CHC of LIGHTNING:** 20%
- **MIXING HEIGHT:** 1500ft or less.

---

## Tuesday (0600-1800 PDT):

- **WEATHER:** Mostly cloudy w/patchy fog in the morning. Showers & a chance of thunderstorms.
- **WIND (20 FT):** SE 5-10 mph becoming SW 5-10 mph afternoon. *(24hr Trend: Down 5-12mph)*
- **MAX TEMPERATURES:** 53-63F. *(24hr Max Trend: Down 5°F)*
- **MIN RH:** 60-70%. *(24hr Trend: Up 20%)*
- **CHANCE OF WETTING RAIN (> or = to 0.10"):** 95%. Additional rainfall 0.20-0.40".
- **CHC of LIGHTNING:** 45%.
- **MIXING HEIGHT:** Inversion breaking late morning. Increasing to 3000ft AGL mid-afternoon.
- **TRANSPORT WIND:** S 5-10 mph.

---

## Day 3-5 Outlook, Wednesday - Friday:

Light winds Wed becoming NW Thu & Fri. Highs 55-65F Wed-Thu & 65-75F Fri & lows in the 40s. Mostly cloudy w/showers & isolated thunderstorms Wed tapering off Thu-Fri. Additional Rainfall 0.10-0.40".

---

## 24 Hour Observation Summary from Sunday, 9/7/25 as of 1725 PDT:

**Blue Ridge RAWS (5859ft):** Temps: 52F/ 66F, RH: 57% / 36%, Peak Wind: SSW 8 G15mph @ 1351 PDT  
**Snowbrush RAWS (4812ft):** Temps: 48F/ 70F, RH: 87% / 35%, Peak Wind: SSE 5 G14mph @ 1300 PDT  
**Dunsmuir NE (3844ft):** Temps: 58F/ 72F, RH: 64% / 34%, Peak Wind: SSE 9 G18mph @ 1430 PDT

# Division/Group Assignment List (ICS 204 WF)

Controlled Unclassified Information//Basic

<b>1. Incident Name:</b>				<b>3.</b>			
ROOT				<b>Branch:</b>		<b>Division/Group:</b>  <div style="font-size: 24pt; font-weight: bold; text-align: center;">A/F</div>	
<b>2. Operational Period:</b>							
Date/Time From: 09/08/2025 0700      MON		Date/Time To: 09/08/2025 1900      MON					
<b>4. Operations Personnel</b>							
<b>FIELD OPERATIONS CHIEF</b>		BEASLEY, MARCUS		<b>DIVISION/GROUP SUPERVISOR</b>		CROUSSER, DAVE	
<b>DIVISION/GROUP SUPERVISOR</b>		WAINWRIGHT, GREG (T)					
<b>5. Resources Assigned this Period</b>							
Strike Team / Task Force / Resource Designator		LWD	Leader	Number Persons	Drop Off PT./Time	Pick Up PT./Time	
C-17 CRW2 - ANCHOR POINT		09/18	VENANCIO RUEVA	20	MCCLLOUD ICP/0700	MCCLLOUD ICP/1900	
C-40 CRW2 - AFS C16		09/09	JAVIER GUZMAN	20	MCCLLOUD ICP/0700	MCCLLOUD ICP/1900	
C-29 CRW2 - OC 21		09/16	RUDY PINA / YOSHI (T)	20	MCCLLOUD ICP/0700	MCCLLOUD ICP/1900	
C-16 CRW2 - BLUE MOUNTAIN			OCTAVIO MACIAL		MCCLLOUD ICP/0700	MCCLLOUD ICP/1900	
E-34 ENG3 - CABDF 352		09/16		5	MCCLLOUD ICP/0700	MCCLLOUD ICP/1900	
E-37 ENG5 - KSRNX B71		09/16			MCCLLOUD ICP/0700	MCCLLOUD ICP/1900	
E-25 ENG6 - SANTA RITA 150		09/13	TURNER	3	MCCLLOUD ICP/0700	MCCLLOUD ICP/1900	
E-70 ENG6 - PACIFIC OASIS		09/09	MARCUS LEWIS	3	MCCLLOUD ICP/0700	MCCLLOUD ICP/1900	
E-38 ENG3 - NORTH FORK FD E213		09/16	TRENTON RIGGS	5	MCCLLOUD ICP/0700	MCCLLOUD ICP/1900	
E-33 ENG3 - NORTH METRO FD 25		09/16	WILLIAM CASTONGUAY	5	MCCLLOUD ICP/0700	MCCLLOUD ICP/1900	
E-28 ENG6 - COARF 653		09/18		5	MCCLLOUD ICP/0700	MCCLLOUD ICP/1900	
E-83 WTS2 - TABLE MOUNTAIN		09/17	MATT COLTON	1	MCCLLOUD ICP/0700	MCCLLOUD ICP/1900	
E-141 WTS2 - TABLE MOUNTAIN FORESTRY, LLC		09/17	CHUCK FISCHER	1	MCCLLOUD ICP/0700	MCCLLOUD ICP/1900	
E-85 WTS2 - LONE STAR		09/17	MARK HAMILTON	1	MCCLLOUD ICP/0700	MCCLLOUD ICP/1900	
E-142 WTS2 - KIRACK		09/18	BRANDON DEGROOT	1	MCCLLOUD ICP/0700	MCCLLOUD ICP/1900	
E-3 DZR2 - CASHF D79 #			RYAN JONES	2	MCCLLOUD ICP/0700	MCCLLOUD ICP/1900	
O-24 FMOD - NORTH ZONE FALLERS, INC.		09/20	CARL HALL	2	MCCLLOUD ICP/0700	MCCLLOUD ICP/1900	
C-( ) CRW1 - TALLAC IHC				20	MCCLLOUD ICP/0700	MCCLLOUD ICP/1900	
O-2 TFLD AGBALOG		09/15	AGBALOG, BRYAN	1	MCCLLOUD ICP/0700	MCCLLOUD ICP/1900	
O-3 TFLD BOBBA		09/15	BOBBA, DILEEP	1	MCCLLOUD ICP/0700	MCCLLOUD ICP/1900	
<b>8. Division/Group Communication Summary</b>							
Function	Channel	RX Frequency N/W	RX Tone/NAC	TX Frequency N/W	TX Tone/NAC	Mode	
COMMAND	2	169.7500	T5 146.2	167.1000	T5/146.2	A	
COMMAND	3	173.0375	T5 146.2	167.3250	T5/146.2	A	
TACTICAL	9	166.7750	T5 146.2	166.7750	T5/146.2	A	
TACTICAL	5	168.0500	T5 146.2	168.0500	T5/146.2	A	
<b>9. Prepared By (Resource Unit Leader)</b>			<b>Approved By (Planning Section Chief)</b>			<b>Date</b>	
RACHEL FONVIELLE			RACHEL FONVIELLE			09/07/2025	
						<b>Time</b> 2000	

# Division/Group Assignment List (ICS 204 WF)

Controlled Unclassified Information//Basic

<b>1. Incident Name:</b>				<b>3.</b>			
ROOT				<b>Branch:</b>		<b>Division/Group:</b>  <div style="font-size: 24pt; font-weight: bold; text-align: center;">A/F</div>	
<b>2. Operational Period:</b>							
Date/Time From: 09/08/2025 0700      MON		Date/Time To: 09/08/2025 1900      MON					
<b>4. Operations Personnel</b>							
<b>FIELD OPERATIONS CHIEF</b>		BEASLEY, MARCUS		<b>DIVISION/GROUP SUPERVISOR</b>		CROUSSER, DAVE	
<b>DIVISION/GROUP SUPERVISOR</b>		WAINWRIGHT, GREG (T)					
<b>5. Resources Assigned this Period</b>							
Strike Team / Task Force / Resource Designator		LWD	Leader	Number Persons	Drop Off PT./Time	Pick Up PT./Time	
O-13 EMTF PRADO		09/16	PRADO, ANTHONY	1	MCCLLOUD ICP/0700	MCCLLOUD ICP/1900	
EMTF CONNER			KONNER KENNEDY	1	MCCLLOUD ICP/0700	MCCLLOUD ICP/1900	
REMS BLACK FLAG		09/19	ROCKY CALDWELL	4	MCCLLOUD ICP/0700	MCCLLOUD ICP/1900	
E-98 AMBO1 - ADVENTURE MEDICS LLC		09/17		2	MCCLLOUD ICP/0700	MCCLLOUD ICP/1900	
O-152.32 SOFF MCCLAIN			HARRY MCCLAIN	1	MCCLLOUD ICP/0700	MCCLLOUD ICP/1900	
O-( ) MOTA			RAMON MOTA	1	MCCLLOUD ICP/0700	MCCLLOUD ICP/1900	
READ HENKLE		09/18	JASON HENKLE	2	MCCLLOUD ICP/0700	MCCLLOUD ICP/1900	
REAF GOLIAS			JULIA GOLIAS	2	MCCLLOUD ICP/0700	MCCLLOUD ICP/1900	
<b>6. Control Operations/Work Assignments:</b>							
<p>TASK: Continue mop up 150'-200' interior of fire's edge and patrol established control lines. Monitor and remain initial attack ready for additional starts within the Temporary Flight Restriction.</p> <p>PURPOSE: Minimize impacts to Castle Creek Road, FS Road 40 and 44, the community of McCloud, and all private and federal lands within the impacted area.</p> <p>END STATE: No additional growth beyond established control lines with mitigation of smoke concerns and heat.</p>							
<b>7. Special Instructions:</b>							
<p>Resources marked with # are identified for Initial Attack.</p> <p>READs Gregory, Knapp, Henkle, and Golias will be in Division.</p>							
<b>8. Division/Group Communication Summary</b>							
Function	Channel	RX Frequency N/W	RX Tone/NAC	TX Frequency N/W	TX Tone/NAC	Mode	
COMMAND	2	169.7500	T5 146.2	167.1000	T5/146.2	A	
COMMAND	3	173.0375	T5 146.2	167.3250	T5/146.2	A	
TACTICAL	9	166.7750	T5146.2	166.7750	T5/146.2	A	
TACTICAL	5	168.0500	T5 146.2	168.0500	T5/146.2	A	
<b>9. Prepared By (Resource Unit Leader)</b>			<b>Approved By (Planning Section Chief)</b>			<b>Date</b>	
RACHEL FONVIELLE			RACHEL FONVIELLE			09/07/2025	
						2000	

# Division/Group Assignment List (ICS 204 WF)

## Controlled Unclassified Information//Basic

<b>1. Incident Name:</b>				<b>3.</b>			
ROOT				<b>Branch:</b>		<b>Division/Group:</b>  L	
<b>2. Operational Period:</b>							
Date/Time From: 09/08/2025 0700		Date/Time To: 09/08/2025 1900					
MON		MON					
<b>4. Operations Personnel</b>							
<b>FIELD OPERATIONS CHIEF</b>		BEASLEY, MARCUS		<b>BRANCH DIRECTOR</b>			
<b>DIVISION/GROUP SUPERVISOR</b>		MASON TURNER (T)		<b>DIVISION/GROUP SUPERVISOR</b>		CHRIS DUNN (T) #	
<b>5. Resources Assigned this Period</b>							
Strike Team / Task Force / Resource Designator	LWD	Leader	Number Persons	Drop Off PT./Time	Pick Up PT./Time		
C-3 CRW1 - MIDNIGHT SUN IHC	09/14	ANDREW CULBERTSON	25	MCCLLOUD ICP/0700	MCCLLOUD ICP/1900		
C-6 CR2I - ELK MT	09/15	WILLIAM MARCKS	19	MCCLLOUD ICP/0700	MCCLLOUD ICP/1900		
C-22 CRW2 ALPINE 590		PEDRO SILVA	20	MCCLLOUD ICP/0700	MCCLLOUD ICP/1900		
E-31 ENG6 - WIWIS 0570-WAU 61	09/15		3	MCCLLOUD ICP/0700	MCCLLOUD ICP/1900		
E-36 ENG6 - NAVAJO- AZNAA 3661	09/16	TONY WILLIAMS	3	MCCLLOUD ICP/0700	MCCLLOUD ICP/1900		
E-79 WTS2 - FORTNER EXCAVATION, INC.	09/16	DANNY JONES	1	MCCLLOUD ICP/0700	MCCLLOUD ICP/1900		
E-82 WTS2 - LARSEN'S WATER TRUCK	09/16	RANDY MARTIN	1	MCCLLOUD ICP/0700	MCCLLOUD ICP/1900		
E-80 WTS2 - WESTERN WATERS INC	09/16	JOHN HOLLMER	1	MCCLLOUD ICP/0700	MCCLLOUD ICP/1900		
E-140 WTS2 WILMORE AG	09/17	FRANK PONKE	1	MCCLLOUD ICP/0700	MCCLLOUD ICP/1900		
E-144 WTS2 TURNER	09/19	KEEGAN GUNDERSON	1	MCCLLOUD ICP/0700	MCCLLOUD ICP/1900		
O-13 EMTF PRADO	09/16	PRADO, ANTHONY	1	MCCLLOUD ICP/0700	MCCLLOUD ICP/1900		
O-124 EMPF CONNOR	09/18	CONNOR BORUM	1	MCCLLOUD ICP/0700	MCCLLOUD ICP/1900		
O-145 REMS BLACK FLAG	09/19	ROCKY CALDWELL	4	MCCLLOUD ICP/0700	MCCLLOUD ICP/1900		
E-98 AMBO1- ADVENTURE MEDICS LLC	09/17	JAKE JONES	2	MCCLLOUD ICP/0700	MCCLLOUD ICP/1900		
O-6 SOFF GROGAN	09/12	GROGAN, CHRIS	1	MCCLLOUD ICP/0700	MCCLLOUD ICP/1900		
O-57 SOFF PAYNE		PAYEN (T)	1	MCCLLOUD ICP/0700	MCCLLOUD ICP/1900		
<b>6. Control Operations/Work Assignments:</b>							
TASK: Continue mop up 250'-300' interior of fire's edge and patrol established control lines. Monitor and remain initial attack ready for additional starts within the Temporary Flight Restriction.							
<b>8. Division/Group Communication Summary</b>							
Function	Channel	RX Frequency N/W	RX Tone/NAC	TX Frequency N/W	TX Tone/NAC	Mode	
COMMAND	3	173.0375	T5 146.2	167.3250	T51/46.2	A	
COMMAND	2	169.7500	T5 146.2	167.1000	T5/146.2	A	
TACTICAL	6	168.2000	T5 146.2	168.2000	T5/146.2	A	
<b>9. Prepared By (Resource Unit Leader)</b>		<b>Approved By (Planning Section Chief)</b>			<b>Date</b>		<b>Time</b>
RACHEL FONVIELLE		RACHEL FONVIELLE			09/07/2025		2000



# Division/Group Assignment List (ICS 204 WF)

Controlled Unclassified Information//Basic

<b>1. Incident Name:</b>				<b>3.</b>			
ROOT				<b>Branch:</b>		<b>Division/Group:</b>  L	
<b>2. Operational Period:</b>							
Date/Time From: 09/08/2025 0700 MON		Date/Time To: 09/08/2025 0700 MON					
<b>4. Operations Personnel</b>							
<b>FIELD OPERATIONS CHIEF</b>		BEASLEY, MARCUS		<b>BRANCH DIRECTOR</b>			
<b>DIVISION/GROUP SUPERVISOR</b>		MASON TURNER (T)		<b>DIVISION/GROUP SUPERVISOR</b>		CHRIS DUNN (T)	
<b>6. Control Operations/Work Assignments:</b>  PURPOSE: Minimize impacts to Castle Creek Road, FS Road 40 and 44, the community of McCloud, and all private and federal lands within the impacted area.  END STATE: No additional growth beyond established control lines with mitigation of smoke concerns and heat.							
<b>7. Special Instructions:</b>  Resources marked with # are identified for Initial Attack.							
<b>8. Division/Group Communication Summary</b>							
Function	Channel	RX Frequency N/W	RX Tone/NAC	TX Frequency N/W	TX Tone/NAC	Mode	
COMMAND	3	173.0375	T5 146.2	167.3250	T5/146.2	A	
COMMAND	2	169.7500	T5 146.2	167.1000	T5/146.2	A	
TACTICAL	6	168.2000	T5 146.2	168.2000	T5/146.2	A	
<b>9. Prepared By (Resource Unit Leader)</b>			<b>Approved By (Planning Section Chief)</b>			<b>Date</b>	<b>Time</b>
RACHEL FONVIELLE			RACHEL FONVIELLE			09/07/2025	2000

# Division/Group Assignment List (ICS 204 WF)

## Controlled Unclassified Information//Basic

<b>1. Incident Name:</b>				<b>3.</b>			
ROOT				<b>Branch:</b>		<b>Division/Group:</b>  T	
<b>2. Operational Period:</b>							
Date/Time From: 09/08/2025 0700 MON		Date/Time To: 09/08/2025 1900 MON					
<b>4. Operations Personnel</b>							
<b>FIELD OPERATIONS CHIEF</b>		BEASLEY, MARCUS		<b>BRANCH DIRECTOR</b>			
<b>DIVISION/GROUP SUPERVISOR</b>		WALTON, DAN		<b>DIVISION/GROUP SUPERVISOR</b>		SISK, WESLEY (T)	
<b>5. Resources Assigned this Period</b>							
Strike Team / Task Force / Resource Designator	LWD	Leader	Number Persons	Drop Off PT./Time	Pick Up PT./Time		
C-9 CRW1 MT TAYLOR	09/13	HOWARD KENNY	21	MCCLOUD ICP/0700	MCCLOUD ICP/1900		
C-5 CR2I - IRON MOUNTAIN - CAENF #	09/16	KEVIN BREITWIESER	20	MCCLOUD ICP/0700	MCCLOUD ICP/1900		
C-7 CR2I FIRESTORM 5	09/16	GENE LOPEZ	20	MCCLOUD ICP/0700	MCCLOUD ICP/1900		
C-8 CR2I - FIRESTORM WILDLAND FIRE NCC 7B	09/16	CHRIS SPRAGUE	20	MCCLOUD ICP/0700	MCCLOUD ICP/1900		
E-60 ENG3 LORAX	09/09	IVAN REED	3	MCCLOUD ICP/0700	MCCLOUD ICP/1900		
E-35 ENG3 - LOS PINOS FPD 25 ENGINE 88 #	09/15	ANDY BARBER	5	MCCLOUD ICP/0700	MCCLOUD ICP/1900		
E-21 ENG3 IAR05	09/12	BLAIN PHILLIPS	4	MCCLOUD ICP/0700	MCCLOUD ICP/1900		
E-32 ENG5 - NVCCFX CARSON CITY FD B54	09/16	ANDERSON MUELLER	4	MCCLOUD ICP/0700	MCCLOUD ICP/1900		
E-14 ENG6 - NDNDS E5275	09/10	RYAN ATKANEN	4	MCCLOUD ICP/0700	MCCLOUD ICP/1900		
E-27 ENG6 - IDCTF E632 #	09/16	AUSTIN NIELSON	5	MCCLOUD ICP/0700	MCCLOUD ICP/1900		
E-81 WTS2 - DUNLAP	09/16	CHASE WALKUP	1	MCCLOUD ICP/0700	MCCLOUD ICP/1900		
E-76 WTS2 - INGRAM	09/17	MATTHEW SMILEY	1	MCCLOUD ICP/0700	MCCLOUD ICP/1900		
E-17 MBLP - PUMPZILLA	09/14	WALT MCGUINESS	2	MCCLOUD ICP/0700	MCCLOUD ICP/1900		
O-25 FMOD - BENNETT TIMBER CUTTING LLC	09/15	JENNINGS BLAKE	2	MCCLOUD ICP/0700	MCCLOUD ICP/1900		
O-13 EMTF PRADO	09/16	ANTHONY PRADO	1	MCCLOUD ICP/0700	MCCLOUD ICP/1900		
O-124 EMPF CONNOR	09/18	CONNOR BORUM	1	MCCLOUD ICP/0700	MCCLOUD ICP/1900		
O-145 REMS BLACK FLAG	09/19	ROCKY CALDWELL	4	MCCLOUD ICP/0700	MCCLOUD ICP/1900		
E-86 AMBO1 - WILDERNESS MEDICS, INC. - C03127	09/17	JAKE JONES	2	MCCLOUD ICP/0700	MCCLOUD ICP/1900		
O-6 SOFF GROGAN	09/12	CHRIS GROGAN	1	MCCLOUD ICP/0700	MCCLOUD ICP/1900		
<b>8. Division/Group Communication Summary</b>							
Function	Channel	RX Frequency N/W	RX Tone/NAC	TX Frequency N/W	TX Tone/NAC	Mode	
COMMAND	2	169.7500	T5 146.2	167.1000	T5 146.2	A	
COMMAND	3	173.0375	T5 146.2	167.3250	T5 146.2	A	
TACTICAL	7	168.6000	T5 146.2	168.6000	T5 146.2	A	
<b>9. Prepared By (Resource Unit Leader)</b>		<b>Approved By (Planning Section Chief)</b>			<b>Date</b>	<b>Time</b>	
RACHEL FONVIELLE		RACHEL FONVIELLE			09/07/2025	2000	

**Division/Group Assignment List (ICS 204 WF)**  
**Controlled Unclassified Information//Basic**

<b>1. Incident Name:</b>				<b>3.</b>			
ROOT				<b>Branch:</b>		<b>Division/Group:</b>  T	
<b>2. Operational Period:</b>							
Date/Time From: 09/08/2025 0700 MON		Date/Time To: 09/08/2025 1900 MON					
<b>4. Operations Personnel</b>							
<b>FIELD OPERATIONS CHIEF</b>		BEASLEY, MARCUS		<b>BRANCH DIRECTOR</b>			
<b>DIVISION/GROUP SUPERVISOR</b>		WALTON, DAN		<b>DIVISION/GROUP SUPERVISOR</b>		SISK, WESLEY (T)	
<b>5. Resources Assigned this Period</b>							
Strike Team / Task Force / Resource Designator		LWD	Leader	Number Persons	Drop Off PT./Time	Pick Up PT./Time	
O-( ) SOF3 - PAYNE			PAYNE (T)	1	McCLOUD ICP/0700	McCLOUD ICP/1900	
O-156 READ GIBSON			NANCY GIBSON	1	McCLOUD ICP/0700	McCLOUD ICP/1900	
O-157 REAF LOMAHUKLUH			DANIELLE GREGORY	1	McCLOUD ICP/0700	McCLOUD ICP/1900	
<b>6. Control Operations/Work Assignments:</b>  TASK: Continue mop up 150'-200' interior of fire's edge and patrol established control lines. Monitor and remain initial attack ready for additional starts within the Temporary Flight Restriction.  PURPOSE: Minimize impacts to Castle Creek Road, FS Road 40 and 44, the community of McCloud, and all private and federal lands within the impacted area.  END STATE: No additional growth beyond established control lines with mitigation of smoke concerns and heat.							
<b>7. Special Instructions:</b>  Resources marked with # are identified for Initial Attack.							
<b>8. Division/Group Communication Summary</b>							
Function	Channel	RX Frequency N/W	RX Tone/NAC	TX Frequency N/W	TX Tone/NAC	Mode	
COMMAND	2	169.7500	T5 146.2	167.1000	T5146.2	A	
COMMAND	3	173.0375	T5 146.2	167.3250	T5146.2	A	
TACTICAL	7	168.6000	T5146.2	168.6000	T5146.2	A	
<b>9. Prepared By (Resource Unit Leader)</b>			<b>Approved By (Planning Section Chief)</b>		<b>Date</b>	<b>Time</b>	
RACHEL FONVIELLE			RACHEL FONVIELLE		09/07/2025	2000	

**Division/Group Assignment List (ICS 204 WF)**  
Controlled Unclassified Information//Basic

<b>1. Incident Name:</b>				<b>3.</b>			
ROOT				<b>Branch:</b>		<b>Division/Group:</b>  <b>STAGING</b>	
<b>2. Operational Period:</b>							
Date/Time From: 09/08/2025 0700      MON		Date/Time To: 09/08/2025 1900      MON					
<b>4. Operations Personnel</b>							
<b>FIELD OPERATIONS CHIEF</b>		MARCUS BEASLEY		<b>BRANCH DIRECTOR</b>			
<b>DIVISION/GROUP SUPERVISOR</b>							
<b>5. Resources Assigned this Period</b>							
Strike Team / Task Force / Resource Designator		LWD	Leader	Number Persons	Drop Off PT./Time	Pick Up PT./Time	
E-16 DZR2 - CATTANEO #		09/15	JON ELITS	1	MCCLLOUD ICP/0700	MCCLLOUD ICP/1900	
E-15 DZR2 - EVANS BROTHERS #		09/15	DOUG EVANS	2	MCCLLOUD ICP/0700	MCCLLOUD ICP/1900	
O-33 HEQB BISAGNO #		09/16	BISAGNO, NICHOLAS	1	MCCLLOUD ICP/0700	MCCLLOUD ICP/1900	
<b>6. Control Operations/Work Assignments:</b>  Remain prepared for initial attack.							
<b>7. Special Instructions:</b>  Resources marked with # are identified for Initial Attack.							
<b>8. Division/Group Communication Summary</b>							
Function	Channel	RX Frequency N/W	RX Tone/NAC	TX Frequency N/W	TX Tone/NAC	Mode	
COMMAND							
TACTICAL							
LOGISTICS							
AIR TO GROUND							
<b>9. Prepared By (Resource Unit Leader)</b> RACHEL FONVIELLE			<b>Approved By (Planning Section Chief)</b> RACHEL FONVIELLE		<b>Date</b> 9/7/2025	<b>Time</b> 2000	

**AIR OPERATIONS SUMMARY (ICS 220)**  
**Controlled Unclassified Information//Basic**

<b>1. Incident Name:</b>		<b>2. Operational Period:</b>		<b>3. Sunrise:</b>		<b>Sunset:</b>
ROOT		Date/Time 09/08/2025 0700	From: MON	Date/Time To: 09/08/2025 1900	MON	
<b>10. Helicopters</b> (use additional sheets as necessary):						
FAA N#	Category/Kind/Type	Make/Model	Base	Available	Start	Remarks
OFS	2	UH 60	MOTT	0830	0800	
<b>12. Task/Mission/Assignment</b> (category/kind/type and function includes: air tactical, reconnaissance, personnel transport, search and rescue, etc.):						
Category/Kind/Type and Function	Name of Personnel or Cargo (if applicable) or Instructions for Tactical Aircraft			Mission Start	Fly From	Fly To
<b>11. Prepared By:</b> Name:		Position/Title:		Signature:		
ICS 220, Page 2 of 2		Date/Time:				

INCIDENT RADIO COMMUNICATIONS PLAN			Incident Name ROOT			Date/Time Prepared 9/7/2025 14:55		Operational Period Date/Time 9/8/2025 0700 to 9/8/2025 1900	
Zn / Ch	Function	Channel Name/Trunked Talkgroup	Assignment	RX Freq	RX Tone/NAC	TX Freq	TX Tone/NAC	Mode A, D, M	Remarks
1	Command	FS SHF-R	Night Emergency	171.5750		165.0125	T6 156.7	A	FS Dispatch
2	Command	NIFC C5	All DIVS	169.7500	T5 146.2	167.1000	T5 146.2	A	
3	Command	NIFC C12	All DIVS	173.0375	T5 146.2	167.3250	T5 146.2	A	
4	Command	NIFC C71	N/A	171.8625	T5 146.2	164.6000	T5 146.2	A	NOT AVAILABLE
5	Tactical	NIFC T1	DIV F	168.0500	T5 146.2	168.0500	T5 146.2	A	
6	Tactical	NIFC T2	DIV L	168.2000	T5 146.2	168.2000	T5 146.2	A	
7	Tactical	NIFC T3	DIV T	168.6000	T5 146.2	168.6000	T5 146.2	A	
8	Tactical	NIFC T4	AVAILABLE	166.7250	T5 146.2	166.7250	T5 146.2	A	
9	Tactical	NIFC T5	DIV A	166.7750	T5 146.2	166.7750	T5 146.2	A	
10	Tactical	NIFC T6	AVAILABLE	168.2500	T5 146.2	168.2500	T5 146.2	A	
11	Tactical	VFIRE 23	AVAILABLE	154.2950	T6 156.7	154.2950	T6 156.7	A	
12	Tactical	VFIRE 24	AVAILABLE	154.2725	T6 156.7	154.2725	T6 156.7	A	
13	A/G	A/G CMD	ALL DIVS	164.0250		164.0250		A	
14	A/G	A/G TAC	ALL DIVS	169.0000		169.0000		A	
15	CALCORD	MEDICAL	ALL DIVS	156.0750	T6 156.7	156.0750	T6 156.7	A	MEDIVAC/MEDICAL
16	AIRGUARD	EMERGENCY	ALL DIVS	168.6250		168.6250	T1 110.9	A	EMERGENCY
17									
18									
19									
20	AIRGUARD	EMERGENCY	ALL DIVS	168.6250		168.6250	110.9	A	EMERGENCY
Prepared By (Communications Unit Leader) Lee Weaver COML(T)					Incident Location County Latitude, Longitude				

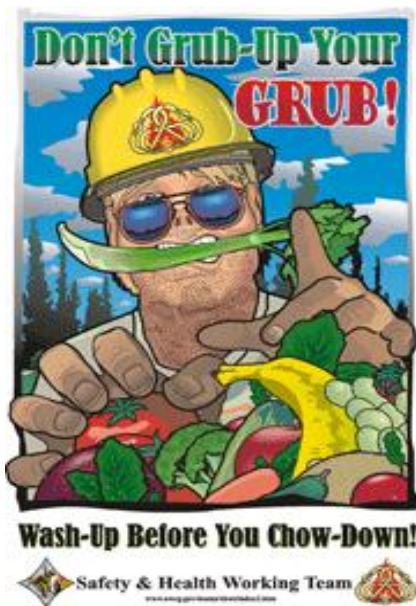
Deviation is assumed to be narrow band unless otherwise noted in the remarks. Mode refers to either "A" (analog), "D" (digital) or "M" (mixed mode). FIREScope 1/18/15 v.7

**Utilization of any frequency other than those listed on this form are not authorized.**

INCIDENT RADIO COMMUNICATIONS PLAN			Incident Name Initial Attack			Date/Time Prepared 9/7/2025 14:56		Operational Period Date/Time 9/8/2025 0700 to 9/8/2025 1900	
Zn / Ch	Function	Channel Name/Trunked Talkgroup	Assignment	RX Freq	RX Tone/NAC	TX Freq	TX Tone/NAC	Mode A, D, M	Remarks
1	Command	SMMU		166.9875N		166.9875N	T7 167.9	A	
2	Command	SHF-R		171.5750N		165.0125N	T6 156.7	A	
3	Tactical	R5 T4		166.5500N		166.5500N		A	
4	Tactical	R5 T5		167.1125N		167.1125N		A	
5	Tactical	R5 T7		167.9625N		167.9625N		A	
6	Complex	SRVCRPT		171.5000		164.8250	T6 156.7	A	
7	Command	SKU		151.3250	T6 156.7	159.3600	T7 167.9	A	
8	Tactical	CDF T7		151.3400	T16 192.8	151.3400	T16 192.8	A	
9	Tactical	CDF T8		151.3700	T16 192.8	151.3700	T16 192.8	A	
10	Tactical	CDF T9		151.3850	T16 192.8	151.3850	T16 192.8	A	
11	Command	CDF C10		151.1900	T8 103.5	159.2250	T2 123.0	A	ANTELOPE
12	Command	SIS CMD		154.2500		156.1050	T7 167.9	A	
13	Medical	CALCORD		156.0750	T6 156.7	156.0750	T6 156.7	A	
14	Tactical	R5 AG08		166.8750		166.8750		A	
15	A/G	A/G 43		167.6000N		167.6000N		A	
16	AIRGUARD	AIRGUARD	ALL DIVS	168.6250		168.6250	110.9	A	EMERGENCY
17									
18									
19									
20	AIRGUARD	AIRGUARD	ALL DIVS	168.6250		168.6250	110.9	A	EMERGENCY
Prepared By (Communications Unit Leader) Lee Weaver COML(T)					Incident Location County Latitude, Longitude				
Deviation is assumed to be narrow band unless otherwise noted in the remarks. Mode refers to either "A" (analog), "D" (digital) or "M" (mixed mode). <span style="float: right;">FIREScope 1/18/15 v.7</span>									
Utilization of any frequency other than those listed on this form are not authorized.									

## SAFETY MESSAGE

Incident: <b>Root</b>	Date: <b>9/08/2025</b>	Time: <b>O700</b>
<b>Major Hazards and Risks:</b> (Note more specific Mitigations on ICS 215A)		
- <b>Camp Crud</b>		
- <b>Inclement Weather</b>		
<p><b><i>WASH YOUR HANDS.</i></b> Help keep germs from spreading in camp. If you aren't feeling good, then speak up. Camp crud spreads fast, take action and help keep everyone healthy. Remember to hydrate.</p> <p><b>Inclement Weather</b> moving in Monday, slow down when heading to the fire. Give yourself extra space. <b>LIGHTS ON</b> always. Be patience and stay alert. <b>ARRIVE ALIVE</b></p>		



### Understanding Severe Thunderstorm Risk Categories

THUNDERSTORMS (no label)	1 - MARGINAL (MRGL)	2 - SLIGHT (SLGT)	3 - ENHANCED (ENH)	4 - MODERATE (MDT)	5 - HIGH (HIGH)
No severe* thunderstorms expected	Isolated severe thunderstorms possible	Scattered severe storms possible	Numerous severe storms possible	Widespread severe storms likely	Widespread severe storms expected
Lightning/flooding threats exist with all thunderstorms	Limited in duration and/or coverage and/or intensity	Short-lived and/or not widespread, isolated intense storms possible	More persistent and/or widespread, a few intense	Long-lived, widespread and intense	Long-lived, very widespread and particularly intense
					

\* NWS defines a severe thunderstorm as measured wind gusts to at least 58 mph, and/or hail to at least one inch in diameter, and/or a tornado. All thunderstorm categories imply lightning and the potential for flooding. Categories are also tied to the probability of a severe weather event within 25 miles of your location.



National Weather Service  
[www.spc.noaa.gov](http://www.spc.noaa.gov)



Safety Officer:  
Leland Bass SOFC  
Eric Evans SOF3(t)



122°7.5'W

# Fire Camp

41°16'N

41°16'N

McCloud River Railroad

Top Fill  
Nonpotable  
Water

McCloud River Ground Support  
Railroad

Camp

Large Truck  
Parking

Fuel

Kitchen

Lunches  
and Ice

Supply

Laundry

Crew Camping

ENG/Crews

Camp

Mill Rd

North St

North St

Firenze St

Yeti Atman Creek

Oran

Beaun

Grey  
Water  
Dump

Overhead Camp

Trailers

OH Packing

Comms

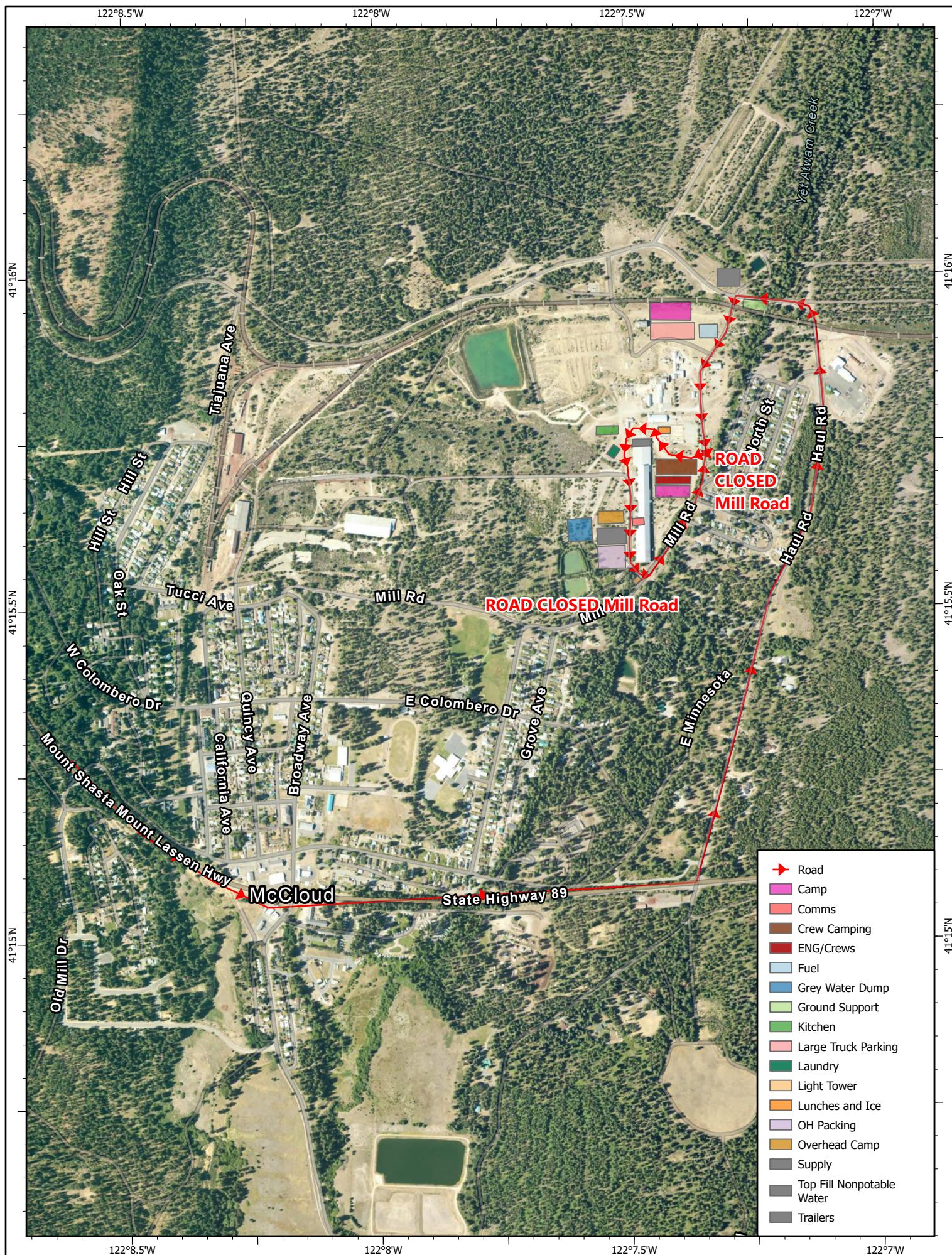
Light Tower

Mill Rd

- Camp
- Comms
- Crew Camping
- ENG/Crews
- Fuel
- Grey Water Dump
- Ground Support
- Kitchen
- Large Truck Parking
- Laundry
- Light Tower
- Lunches and Ice
- OH Packing
- Overhead Camp
- Supply
- Top Fill Nonpotable Water
- Trailers

122°7.5'W







## READ Message

The areas you are helping to protect include various significant natural and cultural resources. There are plants, animals, and cultural history associated with this area that in some cases can only be found here!

Sensitive areas are being identified with yellow & white striped, black letter "EQUIPMENT EXCLUSION ZONE" flagging. In general, these are ground disturbance avoidance zones. Heavy equipment is asked to stay on existing roads and walk through with blades up. Hand treatments are preferred. Please work with the available Resource Advisors if you have questions.



## INCIDENT TRAINING

# TRAINEE REGISTRATION & EXIT INTERVIEW

### DON'T WAIT!

To receive a final training packet you must register and complete an exit interview using the QR Code. Prior to demob ensure you receive ink in your taskbook and a performance evaluation.

RIST - Incident Training



916-581-0148



[rist.resources@firenet.gov](mailto:rist.resources@firenet.gov)



# FINANCE AND CHECK-IN

<b>Incident Name:</b> Root Fire	<b>2. Operational Period:</b> Date From: 09/05/25	Date To: 09/06/25
<b>Incident Number:</b> CA-SHF-001036	Time From: 0700	Time To: 0700

2025.root.finance@firenet.gov

## Finance Documents Needed upon “Check In” (If Not Already Submitted):

### PLEASE EMAIL THE FOLLOWING DOCUMENTS:

<b>FED Equipment/Crews:</b> <ul style="list-style-type: none"><li>• Manifest - showing employment type (GS, GW, or WG) or AD rates if applicable</li><li>• Inspections</li><li>• Casual Hire Forms for any ADs</li></ul>
<b>Overhead:</b> <ul style="list-style-type: none"><li>• AD/Casual Hire Form</li><li>• If regular Agency please ensure GS, GW, or WG is written on your CTR</li></ul>
<b>Contract Equipment, Crews, and Overhead:</b> <ul style="list-style-type: none"><li>• Manifest</li><li>• Inspections</li></ul>
<b>Cooperator:</b> <ul style="list-style-type: none"><li>• Cooperative Agreement</li><li>• Inspections</li><li>• Manifest</li></ul>

---

*Submit Shift Tickets and/or Crew Time Reports every day via email*

---

### When emailing finance:

- ❖ Subject line needs to include RO # and Name
- ❖ Ensure your RO# is written on your Shift Tickets and CTRs







## LG/OES Time and Reimbursement (CFAA)

If you are responsible for completing F42's and reimbursement documentation, please ensure you are registered in MARS and have a Username and Password prior to DMOB as ALL F42's will be completed electronically through MARS. Contact the OES Rep prior to leaving camp to ensure your times are completed correctly to avoid any unwanted delays.



Cal OES Check-in



MARS

Cal OES AREP:

Rick Young  
(916) 541-3165

[rick.young@caloes.ca.gov](mailto:rick.young@caloes.ca.gov)



## INFORMATION MESSAGE

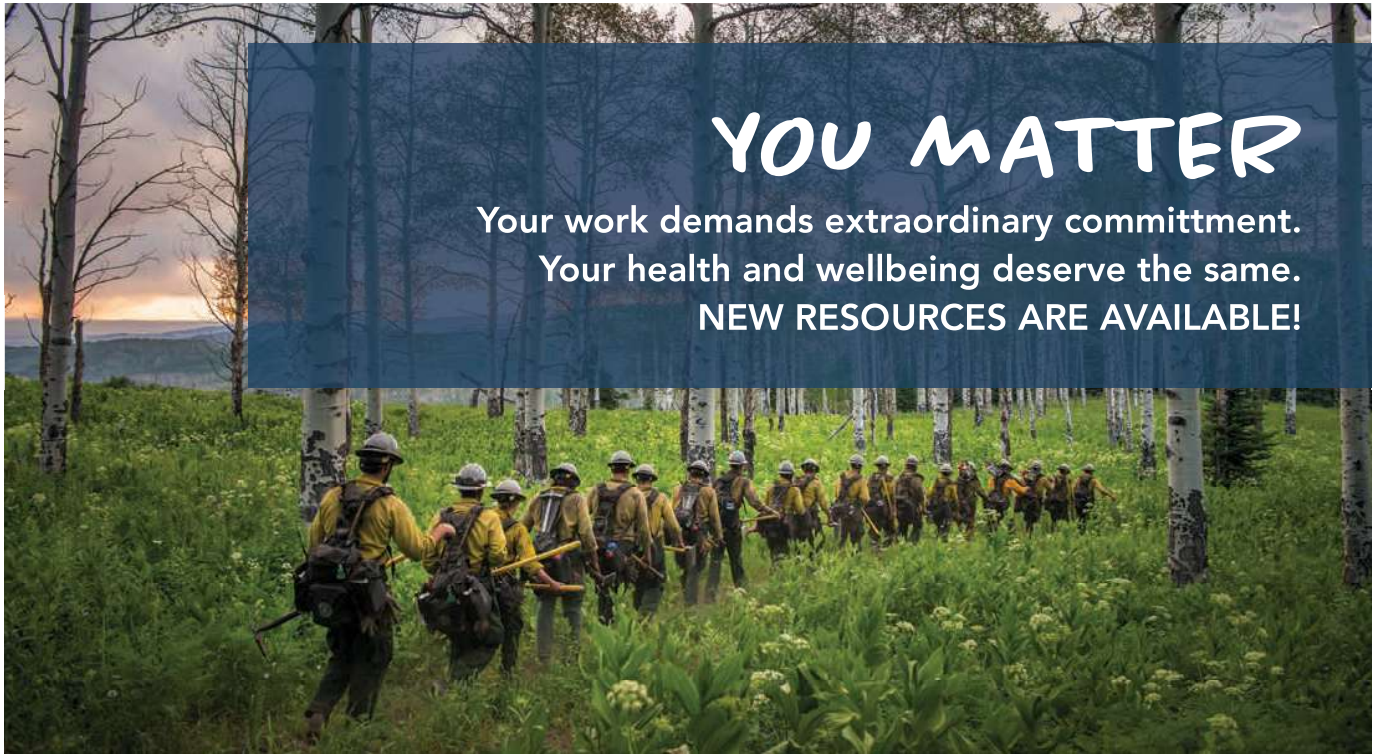
<b>Incident Name:</b> Root Fire	<b>2. Operational Period:</b> Date From: 09/05/25	Date To: 09/06/25
<b>Incident Number:</b> CA-SHF-001036	Time From: 0700	Time To: 0700

Please send us your  
pictures from the field.

We want to show the community  
the good work you're doing!  
Please be sure you're **wearing**  
**proper PPE.**

Email to: [2025.root@firenet.gov](mailto:2025.root@firenet.gov)

FEDERAL WILDLAND FIREFIGHTER  
**HEALTH AND WELLBEING**  
PROGRAM



## YOU MATTER

Your work demands extraordinary commitment.

Your health and wellbeing deserve the same.

**NEW RESOURCES ARE AVAILABLE!**

## Wildland Fire Therapy Service

Offering year-round mental health support:

- Up to 16 free, confidential sessions per year
- Licensed providers in every state
- Expertise in working with first responders
- In-person and virtual appointments

The service is available to:

- Primary and secondary federal wildland firefighters and dispatchers in full-time, permanent, temporary, collateral duty, and administratively determined (AD) positions
- Those who served in federal roles directly supporting operational wildland fire activities in the past six months

**FIND CARE  
TODAY**

**1-800-424-4051**



[www.magellanfederal.com/wildlandfire](http://www.magellanfederal.com/wildlandfire)

Plan to spend **15 minutes** the first time you call.



This service is offered through an external provider, Magellan Federal, and its network of mental health care providers.



## MEDICAL PLAN (ICS 206)

<b>1. Incident Name:</b>		<b>2. Operational Period:</b> Date From: _____ Time From: _____		Date To: _____ Time To: _____			
<b>3. Medical Aid Stations:</b>							
Name	Location	Contact Number(s)/Frequency	Paramedics on Site?				
			<input type="checkbox"/> Yes <input type="checkbox"/> No				
			<input type="checkbox"/> Yes <input type="checkbox"/> No				
			<input type="checkbox"/> Yes <input type="checkbox"/> No				
			<input type="checkbox"/> Yes <input type="checkbox"/> No				
			<input type="checkbox"/> Yes <input type="checkbox"/> No				
			<input type="checkbox"/> Yes <input type="checkbox"/> No				
<b>4. Transportation</b> (indicate air or ground):							
Ambulance Service	Location	Contact Number(s)/Frequency	Level of Service				
			<input type="checkbox"/> ALS <input type="checkbox"/> BLS				
			<input type="checkbox"/> ALS <input type="checkbox"/> BLS				
			<input type="checkbox"/> ALS <input type="checkbox"/> BLS				
			<input type="checkbox"/> ALS <input type="checkbox"/> BLS				
<b>5. Hospitals:</b>							
Hospital Name	Address, Latitude & Longitude if Helipad	Contact Number(s)/Frequency	Travel Time		Trauma Center	Burn Center	Helipad
			Air	Ground			
					<input type="checkbox"/> Yes Level: _____	<input type="checkbox"/> Yes <input type="checkbox"/> No	<input type="checkbox"/> Yes <input type="checkbox"/> No
					<input type="checkbox"/> Yes Level: _____	<input type="checkbox"/> Yes <input type="checkbox"/> No	<input type="checkbox"/> Yes <input type="checkbox"/> No
					<input type="checkbox"/> Yes Level: _____	<input type="checkbox"/> Yes <input type="checkbox"/> No	<input type="checkbox"/> Yes <input type="checkbox"/> No
					<input type="checkbox"/> Yes Level: _____	<input type="checkbox"/> Yes <input type="checkbox"/> No	<input type="checkbox"/> Yes <input type="checkbox"/> No
					<input type="checkbox"/> Yes Level: _____	<input type="checkbox"/> Yes <input type="checkbox"/> No	<input type="checkbox"/> Yes <input type="checkbox"/> No
<b>6. Special Medical Emergency Procedures:</b>							
<input type="checkbox"/> Check box if aviation assets are utilized for rescue. If assets are used, coordinate with Air Operations.							
<b>7. Prepared by</b> (Medical Unit Leader): Name: _____ Signature: _____							
<b>8. Approved by</b> (Safety Officer): Name: _____ Signature: _____							
ICS 206		IAP Page _____		Date/Time: _____			

[illegible]

# MEDICAL PLAN (ICS 206 WF)

Controlled Unclassified Information//Basic

## Medical Incident Report

**FOR A NON-EMERGENCY INCIDENT, WORK THROUGH CHAIN OF COMMAND TO REPORT AND TRANSPORT INJURED PERSONNEL AS NECESSARY.**

**FOR A MEDICAL EMERGENCY: IDENTIFY ON SCENE INCIDENT COMMANDER BY NAME AND POSITION AND ANNOUNCE "MEDICAL EMERGENCY" TO INITIATE RESPONSE FROM IMT COMMUNICATIONS/DISPATCH.**

Use the following items to communicate situation to communications/dispatch.

1. CONTACT COMMUNICATIONS / DISPATCH (Verify correct frequency prior to starting report)

Ex: "Communications, Div. Alpha. Stand-by for Emergency Traffic."

2. INCIDENT STATUS: Provide incident summary (including number of patients) and command structure.

Ex: "Communications, I have a Red priority patient, unconscious, struck by a falling tree. Requesting air ambulance to Forest Road 1 at (Lat./Long.) This will be the Trout Meadow Medical, IC is TFLD Jones. EMT Smith is providing medical care."

Severity of Emergency / Transport Priority	<input type="checkbox"/> RED / PRIORITY 1 Life or limb threatening injury or illness. Evacuation need is IMMEDIATE Ex: Unconscious, difficulty breathing, bleeding severely, 2° – 3° burns more than 4 palm sizes, heat stroke, disoriented. <input type="checkbox"/> YELLOW / PRIORITY 2 Serious Injury or illness. Evacuation may be DELAYED if necessary. Ex: Significant trauma, unable to walk, 2° – 3° burns not more than 1-3 palm sizes. <input type="checkbox"/> GREEN / PRIORITY 3 Minor Injury or illness. Non-Emergency transport Ex: Sprains, strains, minor heat-related illness.	
Nature of Injury or Illness & Mechanism of Injury		Brief Summary of Injury or Illness (Ex: Unconscious, Struck by Falling Tree)
Transport Request		Air Ambulance / Short Haul/Hoist Ground Ambulance / Other
Patient Location		Descriptive Location & Lat. / Long. (WGS84)
Incident Name		Geographic Name + "Medical" (Ex: Trout Meadow Medical)
On-Scene Incident Commander		Name of on-scene IC of Incident within an Incident (Ex: TFLD Jones)
Patient Care		Name of Care Provider (Ex: EMT Smith)

3. INITIAL PATIENT ASSESSMENT: Complete this section for each patient as applicable (start with the most severe patient)

Patient Assessment: See IRPG page 106

Treatment:

4. TRANSPORT PLAN:

Evacuation Location (if different): (Descriptive Location (drop point, intersection, etc.) or Lat. / Long.) Patient's ETA to Evacuation Location:

Helispot / Extraction Site Size and Hazards:

5. ADDITIONAL RESOURCES / EQUIPMENT NEEDS:

Example: Paramedic/EMT, Crews, Immobilization Devices, AED, Oxygen, Trauma Bag, IV/Fluid(s), Splints, Rope rescue, Wheeled litter, HAZMAT, Extrication

6. COMMUNICATIONS: Identify State Air/Ground EMS Frequencies and Hospital Contacts as applicable

Function	Channel Name/Number	Receive (RX)	Tone/NAC *	Transmit (TX)	Tone/NAC *
COMMAND					
AIR-TO-GRND					
TACTICAL					

7. CONTINGENCY: Considerations: If primary options fail, what actions can be implemented in conjunction with primary evacuation method? Be thinking ahead.

8. ADDITIONAL INFORMATION: Updates/Changes, etc.

**REMEMBER:** Confirm ETA's of resources ordered. Act according to your level of training. Be Alert. Keep Calm. Think Clearly. Act Decisively.