

INCIDENT ACTION PLAN

ROOT FIRE

CA-SHF-001036 / 0514 P5S96A



THURSDAY

9/11/2025 AT 0700 - 9/11/2025 AT 1900







TEAM MISSION

The mission of the Georgia Forestry Commission Incident Management Team is to safely, effectively, and efficiently manage the Root Fire by maintaining a team of skilled, professional, and productive personnel. We will strive to successfully complete our mission and achieve our objectives while creating a positive work environment for all assigned personnel.

Consumption of drugs that alter decision making abilities, such as marijuana, other controlled substances, or alcohol is prohibited. Any form of harassment or discrimination will not be tolerated. All inappropriate behavior will be dealt with promptly and could result in disciplinary action, including reporting back to an individual's home unit. Please report any inappropriate behavior to your supervisor or any team member.

Thank you for your willingness to help protect these communities and resources and enjoy your assignment.

INCIDENT OBJECTIVES (ICS 202)

1. Incident Name:		2. Operational Period: DAY	
ROOT		Date/Time From: 09/11/2025 0700 THU	Date/Time To: 09/11/2025 1900 THU
3. Objective(s):			
Management Objectives:			
<ul style="list-style-type: none">• Provide for emergency personnel and public safety at all times.• Protect property, improvements, and infrastructure.• Ensure coordinated, timely and accurate release of public information.• Foster and maintain relationships with all cooperators and stakeholders.• Protect economic, natural, cultural and heritage resources.• Maintain fiscal accountability and keep costs commensurate with values at risk.			
Control Objectives:			
<ul style="list-style-type: none">• Keep the fire North of forest road 39N25• Keep the fire South of the north boundary of the Castle Crags Wilderness• Keep the fire East of Whalen Summit• Keep the fire West of the North Fork of Castle Creek			
4. Operational Period Command Emphasis:			
General Situational Awareness:			
Steep and rugged terrain.			
Seasonally dry and receptive fuel beds.			
5. Site Safety Plan Required? Yes <input type="checkbox"/> No <input checked="" type="checkbox"/>			
Approved Site Safety Plan(s) Located at:			
6. Incident Action Plan (the items checked below are included in this Incident Action Plan):			
<div><div><div><input checked="" type="checkbox"/> ICS 202</div><div><input checked="" type="checkbox"/> ICS 203</div><div><input checked="" type="checkbox"/> ICS 204</div><div><input checked="" type="checkbox"/> ICS 205</div><div><input type="checkbox"/> ICS 205A</div><div><input checked="" type="checkbox"/> ICS 206</div></div><div><div><input type="checkbox"/> ICS 207</div><div><input checked="" type="checkbox"/> ICS 208</div><div><input checked="" type="checkbox"/> ICS 220</div><div><input checked="" type="checkbox"/> Map/Chart</div><div><input checked="" type="checkbox"/> Weather Forecast/Tides/Currents</div></div></div> <div>Other Attachments:<div><div><input checked="" type="checkbox"/> ICS 214</div><div><input checked="" type="checkbox"/> FINANCE MESSAGE</div><div><input checked="" type="checkbox"/> INFORMATION MESSAGE</div><div><input type="checkbox"/></div></div></div>			
7. Prepared by: RACHEL FONVIELLE		Position/Title: PSC3(T)	Signature: 
8. Approved by Incident Commander:		Name: MATTHEW BACON	Signature: 
ICS 202		IAP Page	Date/Time: 9/10/2025 2000



Root Fire Fire Weather Forecast



FORECAST NO: 7
PREDICTION FOR: Thu 0700 – 1900 PDT
SHIFT DATE: Sep 11th, 2025
ISSUED: 1800 PDT, Sep 10th, 2025

UNIT: Shasta-Trinity National Forest
Incident Meteorologist: Brett Lutz
Phone: 916-860-9192

WEATHER DISCUSSION: Low pressure & northerly flow will continue to bring clouds & some showers today, but there will be more sun, less showers & T-storms in the area, and less rainfall today as compared to Wed. Showers will be most likely in the late afternoon-early evening, then skies are likely to become mostly clear. This is likely to result in valley fog & cold temps, esp at ICP where they could dip into the upper 30s Fri & Sat mornings. Weakening low pressure may bring light showers Sun, then warmer & drier conditions return.

Thursday (0700-1900 PDT):

- **WEATHER:** Mostly cloudy w/areas of fog & a slight chance of showers in the morning. Partly-mostly cloudy w/scattered showers & a slight chance of thunderstorms in the late afternoon to evening.
- **WIND (20 FT):** Down slope & down drainage early becoming NW-SW 5-10 mph w/gusts 10-15mph late afternoon-early evening. (24hr Trend: Little change)
- **MAX TEMPERATURES:** 57-67°F. 70-75°F at ICP. (24hr Max Trend: Up 3-6°F)
- **MIN RH:** 50-60%. (24hr Trend: Down 5-15%)
- **CHANCE OF WETTING RAIN (> or = to 0.10"):** 35%. Trace-0.15" expected.
- **CHC of LIGHTNING:** 20%.
- **MIXING HEIGHT:** Inversion breaking late morning. Increasing to 4000ft AGL mid-afternoon.
- **TRANSPORT WIND:** W 5-15 mph.

Thursday Night (1900-0700 PDT):

- **WEATHER:** Mostly cloudy w/showers likely & a slight chance of a thunderstorm in the evening, then becoming mostly clear with areas of fog overnight.
- **WIND (20 FT):** Down slope & down drainage 5 mph or less, generally from the NW-NE.
- **MIN TEMPERATURES:** 40-50°F, around 40°F at ICP.
- **MAX RH:** 80% ridges - 100% valley bottoms.
- **CHANCE OF WETTING RAIN (> or = to 0.10"):** 20%, additional rainfall <0.10".
- **CHC of LIGHTNING:** 10%
- **MIXING HEIGHT:** 500ft or less.

Friday (0700-1900 PDT):

- **WEATHER:** Areas of fog in the morning, otherwise mostly sunny.
- **WIND (20 FT):** Down slope & down drainage, mostly NE early, becoming NW 5-10 mph afternoon. (24hr Trend: Down 0-5 mph)
- **MAX TEMPERATURES:** 66-76°F, 79-84°F at ICP. (24hr Max Trend: Up 9°F)
- **MIN RH:** 30-40%. (24hr Trend: Down 15-25%)
- **CHANCE OF WETTING RAIN (> or = to 0.10"):** 0.
- **CHC of LIGHTNING:** 0%.
- **MIXING HEIGHT:** Inversion breaking late morning. Increasing to 3500ft AGL mid-afternoon.
- **TRANSPORT WIND:** N 5-10 mph.


Day 3-5 Outlook, Saturday - Monday:

Mostly clear Sat AM, then partly cloudy with a slight chc of showers Sun afternoon-evening. Afternoon gusts 12-17 mph each day, from the S Sat-Sun, from the N Mon. Highs 70-75F, 80-85F ICP. **Lows upper 30s to 50F, coldest @ ICP Sat AM.** RH Mins 20-40%, Maxs 50-80%.

24 Hour Observation Summary from Wednesday, 9/10/25 as of 1745 PDT:

Blue Ridge RAWS (5859ft): Temps: 45F/ 55F, RH: 99% / 76%, Pk Wind: WNW 6G13mph, Storm Total: 1.67"
Snowbrush RAWS (4812ft): Temps: 43F/ 60F, RH: 100% / 65%, Pk Wind: SW 3 G7mph, Storm Total: 1.06"
Dunsmuir NE (3844ft): Temps: 50F/ 62F, R7H: 93% / 67%, Pk Wind: NW 6 G13mph, Storm Total: 0.71"
McCloud ICP (3248ft): Temps: 44F/ 69F, RH: 93% / 53%, Pk Wind: SE 8 mph, Storm Total: 0.65"

ORGANIZATION ASSIGNMENT LIST (ICS 203)

1. Incident Name:		2. Operational Period: DAY	
ROOT		Date/Time From: 09/11/2025 0700 THU	Date/Time To: 09/11/2025 1900 THU
3. Incident Commander(s) and Command Staff:		UNIT CHAD BRACKIN (T)	
IC/UC	BLAIR JOINER	COMMUNICATIONS UNIT	MARK SPANN
IC/UC	DANIEL GORE		LEE WEAVER
IC/UC	MATTHEW BACON (T)	SUPPLY UNIT	
SAFETY OFFICER	LELAND BASS	FOOD UNIT	CRAIG DUNCKLEE (T)
INFORMATION OFFICER	PATRICIA STOCKETT	7. Operations Section:	
MEDICAL	ROD SCHMIDT	FIELD OPERATIONS	MARCUS BEASLEY
	LAYNE PAULK (T)	PLANNING OPS	TROY HELMS
LIAISON OFFICER	STEPHEN SPRADLEY ; BRIAN RAMSEY		
4. Agency/Organization Representative(s):		DIVISION/GROUP	A/F DAVE CROUSER GREG WAINWRIGHT (T)
Agency/Organization	Name	DIVISION/GROUP	L MASON TURNER (T) CHRIS DUNN (T)
AGENCY ADMINISTRATOR	BEN SUNDAL	DIVISION/GROUP	T DAN WALTON/ WESLEY SISK (T)
AGENCY ADMINISTRATOR	JOE RODAME (T)		
CALFIRE SHU	TROY VELIN	7b. Air Operations Branch:	
CALFIRE SKU	JAKE BURGESS	AIR OPS BRANCH DIRECTOR	
CASTLE CRAHS STATE PARK	TODD JONES	AIR ATTACK SUPERVISOR	
SHASTA COUNTY	MCDANIEL	AIR SUPPORT SUPERVISOR	
LEAD READ	MONICA LOMAHUKLUH	HELICOPTER COORDINATOR	
5. Planning Section:		AIR TANKER COORDINATOR	
CHIEF	ETHAN ROBERTSON RACHEL FONVIELLE (T)	8. Finance/Administration Section:	
DEPUTY		CHIEF	JOE FINCHER
RESOURCES UNIT		TIME UNIT	JESSICA LEE
SITUATION UNIT		PROCUREMENT UNIT	
DOCUMENTATION UNIT	JOHANNA OSTLING LAURAN YERKES (V) (T)	COMPENSATION UNIT	
DEMOBILIZATION UNIT		COST UNIT	
FIRE BEHAVIOR ANALYST			
HUMAN RESOURCE SPECIALIST			
TRAINING SPECIALIST	PETER DUTCHICK		
GISS	CAITLIN BOON SYLVIA TOUCHSTONE (T)		
IMET	BRETT LUTZ		
TECHNOLOGY SUPPORT SPECIALIST	DARREN HOWARD ; ANDREW MONTGOMERY (T) ; TERRI MILLER (T)		
6. Logistics Section:			
CHIEF	WILLIE BOSTON KEN BRADDY (T)		
ORDERING	KERRY JOHNSTON (T) TUCKER COLEMAN (T)		
FACILITIES UNIT	JASON HARRIS KEVIN MACEWEN		
GROUND SUPPORT	KEN BRADY		
9. Prepared By:	Name: JAMES SIRMANS	Position/Title: SCKN (T)	Signature: 
ICS 203	IAP Page	Date/Time: 09/10/2025 1132	

Division/Group Assignment List (ICS 204 WF)

Controlled Unclassified Information//Basic

1. Incident Name:				3.			
ROOT				Branch:		Division/Group: <div style="font-size: 24pt; font-weight: bold; text-align: center;">A/F</div>	
2. Operational Period: DAY							
Date/Time From: 09/11/2025 0700 THU		Date/Time To: 09/11/2025 1900 THU					
4. Operations Personnel							
FIELD OPERATIONS CHIEF		BEASLEY, MARCUS		DIVISION/GROUP SUPERVISOR		CROUSSER, DAVE	
DIVISION/GROUP SUPERVISOR		WAINWRIGHT, GREG (T)					
5. Resources Assigned this Period							
Strike Team / Task Force / Resource Designator		LWD	Leader	Number Persons	Drop Off PT./Time	Pick Up PT./Time	
C-17 CRW2 - ANCHOR POINT		09/18	VENANCIO RUEVA	20	MCCLLOUD ICP/0700	MCCLLOUD ICP/1900	
C-29 CRW2 - OC 21		09/16	RUDY PINA / YOSHI (T)	20	MCCLLOUD ICP/0700	MCCLLOUD ICP/1900	
C-39 CRW2 WYEAST		09/22	RHYTHM KENALEY	20	MCCLLOUD ICP/0700	MCCLLOUD ICP/1900	
E-34 ENG3 - CABDF 352		09/16		5	MCCLLOUD ICP/0700	MCCLLOUD ICP/1900	
O-24 FMOD - NORTH ZONE FALLERS, INC.		09/20	CARL HALL	2	MCCLLOUD ICP/0700	MCCLLOUD ICP/1900	
O-2 TFLD AGBALOG		09/15	AGBALOG, BRYAN	1	MCCLLOUD ICP/0700	MCCLLOUD ICP/1900	
O-3 TFLD BOBBA		09/15	BOBBA, DILEEP	1	MCCLLOUD ICP/0700	MCCLLOUD ICP/1900	
O-13 EMTF PRADO		09/16	PRADO, ANTHONY	1	MCCLLOUD ICP/0700	MCCLLOUD ICP/1900	
EMTF CONNER			CONNER	1	MCCLLOUD ICP/0700	MCCLLOUD ICP/1900	
REMS BLACK FLAG		09/19	ROCKY CALDWELL	4	MCCLLOUD ICP/0700	MCCLLOUD ICP/1900	
O-146 REMS EMERGENCY RESPONSE		09/21		4	MCCLLOUD ICP/0700	MCCLLOUD ICP/1900	
E-98 AMBO1 - ADVENTURE MEDICS LLC		09/17		2	MCCLLOUD ICP/0700	MCCLLOUD ICP/1900	
O-152.32 SOFF MCCLAIN			HARRY MCCLAIN	1	MCCLLOUD ICP/0700	MCCLLOUD ICP/1900	
O-181 REAF KNAPP			TRACY KNAPP	1	MCCLLOUD ICP/0700	MCCLLOUD ICP/1900	
O-72 REAF LOMAHUKLUH			MONICA LOMAHUKLUH	1	MCCLLOUD ICP/0700	MCCLLOUD ICP/1900	
O-193 REAF HIDDE			JOSEPH HIDDD	1	MCCLLOUD ICP/0700	MCCLLOUD ICP/1900	
8. Division/Group Communication Summary							
Function	Channel	RX Frequency N/W	RX Tone/NAC	TX Frequency N/W	TX Tone/NAC	Mode	
COMMAND	2	169.7500	T5/146.2	167.1000	T5/146.2	A	
COMMAND	3	173.0375	T5/146.2	167.3250	T5/146.2	A	
TACTICAL	5	168.0500	T5/146.2	168.0500	T5/146.2	A	
TACTICAL	9	166.7750	T5/146.2	166.7750	T5/146.2	A	
9. Prepared By (Resource Unit Leader)			Approved By (Planning Section Chief)			Date	
JAMES SIRMANS			RACHEL FONVIELLE			09/10/2025	
						1132	

Division/Group Assignment List (ICS 204 WF)

Controlled Unclassified Information//Basic

1. Incident Name:				3.			
ROOT				Branch:		Division/Group: A/F	
2. Operational Period: DAY							
Date/Time From: 09/11/2025 0700 THU		Date/Time To: 09/11/2025 1900 THU					
4. Operations Personnel							
FIELD OPERATIONS CHIEF		BEASLEY, MARCUS		DIVISION/GROUP SUPERVISOR		CROUSSER, DAVE	
DIVISION/GROUP SUPERVISOR		WAINWRIGHT, GREG (T)					
5. Resources Assigned this Period							
Strike Team / Task Force / Resource Designator		LWD	Leader	Number Persons	Drop Off PT./Time	Pick Up PT./Time	
O-154 REAF GOLIAS			JULIA GOLIAS	1	MCCLLOUD ICP/0700	MCCLLOUD ICP/1900	
6. Control Operations/Work Assignments:							
<p>TASK: Continue mop up 250' interior of fire's edge and patrol established control lines. Monitor and remain initial attack ready for additional starts within the Temporary Flight Restriction. Continue to back haul any unnecessary equipment to DP-10. Continue repair in accordance with the established suppression repair plan and approval from READs.</p> <p>PURPOSE: Minimize impacts to Castle Creek Road, FS Road 40 and 44, the community of McCloud, and all private and federal lands within the impacted area.</p> <p>END STATE: Rehabilitate and repair established control lines to standards outlined in the Approved Fire Suppression Repair Plan.</p>							
7. Special Instructions:							
Resources marked with # are identified for Initial Attack.							
8. Division/Group Communication Summary							
Function	Channel	RX Frequency N/W	RX Tone/NAC	TX Frequency N/W	TX Tone/NAC	Mode	
COMMAND	2	169.7500	T5/146.2	167.1000	T5/146.2	A	
COMMAND	3	173.0375	T5/146.2	167.3250	T5/146.2	A	
TACTICAL	5	168.0500	T5/146.2	168.0500	T5/146.2	A	
TACTICAL	9	166.7750	T5/146.2	166.7750	T5/146.2	A	
9. Prepared By (Resource Unit Leader)			Approved By (Planning Section Chief)		Date	Time	
JAMES SIRMANS			RACHEL FONVIELLE		09/10/2025	1132	

Division/Group Assignment List (ICS 204 WF)

Controlled Unclassified Information//Basic

1. Incident Name:				3.			
ROOT				Branch:		Division/Group: L	
2. Operational Period: DAY							
Date/Time From: 09/11/2025 0700 THU		Date/Time To: 09/11/2025 1900 THU					
4. Operations Personnel							
FIELD OPERATIONS CHIEF		BEASLEY, MARCUS		BRANCH DIRECTOR			
DIVISION/GROUP SUPERVISOR		MASON TURNER (T)		DIVISION/GROUP SUPERVISOR		CHRIS DUNN # (T)	
5. Resources Assigned this Period							
Strike Team / Task Force / Resource Designator	LWD	Leader	Number Persons	Drop Off PT./Time	Pick Up PT./Time		
C-22 CRW2 ALPINE 590	09/21	PEDRO SILVA	20	MCCLLOUD ICP/0700	MCCLLOUD ICP/1900		
C-35 CRW2 FALCON RESOURCES	09/22	ERNESTO GALVAN	20	MCCLLOUD ICP/0700	MCCLLOUD ICP/1900		
C-5 CR2I IRON MOUNTAIN	09/16	KEVIN BREITWIESER	20	MCCLLOUD ICP/0700	MCCLLOUD ICP/1900		
E-12 ENG3 - CAPNF E315	09/15	CASEY SIMONI	5	MCCLLOUD ICP/0700	MCCLLOUD ICP/1900		
E-32 ENG6 NVCCFX CARSON FPD	09/15	ANDERSON MUELLER	4	MCCLLOUD ICP/0700	MCCLLOUD ICP/1900		
E-144 WTS2 TURNER	09/19	KEEGAN GUNDERSON	1	MCCLLOUD ICP/0700	MCCLLOUD ICP/1900		
O-13 EMTF PRADO	09/16	PRADO, ANTHONY	1	MCCLLOUD ICP/0700	MCCLLOUD ICP/1900		
O-124 EMPF CONNOR	09/18	CONNOR BORUM	1	MCCLLOUD ICP/0700	MCCLLOUD ICP/1900		
O-145 REMS BLACK FLAG	09/19	ROCKY CALDWELL	4	MCCLLOUD ICP/0700	MCCLLOUD ICP/1900		
O-146 REMS EMERGENCY RESPONSE	09/21		4	MCCLLOUD ICP/0700	MCCLLOUD ICP/1900		
E-98 AMB2 - ADVENTURE MEDICS LLC	09/17	JAKE JONES	2	MCCLLOUD ICP/0700	MCCLLOUD ICP/1900		
O-6 SOFF GROGAN	09/12	GROGAN, CHRIS	1	MCCLLOUD ICP/0700	MCCLLOUD ICP/1900		
O-() SOFF PAYNE		PAYEN (T)	1	MCCLLOUD ICP/0700	MCCLLOUD ICP/1900		
O-155 READ HENKLE		JASON HENKLE		MCCLLOUD ICP/0700	MCCLLOUD ICP/1900		
6. Control Operations/Work Assignments:							
<p>TASK: Continue mop up 250' interior of fire's edge and patrol established control lines. Monitor and remain initial attack ready for additional starts within the Temporary Flight Restriction. Continue to back haul any unnecessary equipment to DP-10. Continue repair in accordance with the established suppression repair plan and approval from READs.</p>							
8. Division/Group Communication Summary							
Function	Channel	RX Frequency N/W	RX Tone/NAC	TX Frequency N/W	TX Tone/NAC	Mode	
COMMAND	2	169.7500	T5/146.2	167.1000	T5/146.2	A	
COMMAND	3	173.0375	T5/146.2	167.3250	T5/146.2	A	
TACTICAL	6	168.2000	T5/146.2	168.2000	T5/146.2	A	
9. Prepared By (Resource Unit Leader)		Approved By (Planning Section Chief)			Date	Time	
JAMES SIRMANS		RACHEL FONVIELLE			09/10/2025	1132	

Division/Group Assignment List (ICS 204 WF)

Controlled Unclassified Information//Basic

1. Incident Name:				3.			
ROOT				Branch:		Division/Group: L	
2. Operational Period: DAY							
Date/Time From: 09/11/2025 0700 THU		Date/Time To: 09/11/2025 1900 THU					
4. Operations Personnel							
FIELD OPERATIONS CHIEF		BEASLEY, MARCUS		BRANCH DIRECTOR			
DIVISION/GROUP SUPERVISOR		MASON TURNER (T)		DIVISION/GROUP SUPERVISOR		CHRIS DUNN # (T)	
6. Control Operations/Work Assignments:							
<p>PURPOSE: Minimize impacts to Castle Creek Road, FS Road 40 and 44, the community of McCloud, and all private and federal lands within the impacted area.</p> <p>END STATE: Rehabilitate and repair established control lines to standards outlined in the Approved Fire Suppression Repair Plan.</p>							
7. Special Instructions:							
Resources marked with # are identified for Initial Attack.							
8. Division/Group Communication Summary							
Function	Channel	RX Frequency N/W	RX Tone/NAC	TX Frequency N/W	TX Tone/NAC	Mode	
COMMAND	2	169.7500	T5/146.2	167.1000	T5/146.2	A	
COMMAND	3	173.0375	T5/146.2	167.3250	T5/146.2	A	
TACTICAL	6	168.2000	T5/146.2	168.2000	T5/146.2	A	
9. Prepared By (Resource Unit Leader)			Approved By (Planning Section Chief)			Date	Time
JAMES SIRMANS			RACHEL FONVIELLE			09/10/2025	1132

Division/Group Assignment List (ICS 204 WF)

Controlled Unclassified Information//Basic

1. Incident Name:				3.			
ROOT				Branch:		Division/Group: T	
2. Operational Period: DAY							
Date/Time From: 09/11/2025 0700 THU		Date/Time To: 09/11/2025 1900 THU					
4. Operations Personnel							
FIELD OPERATIONS CHIEF		BEASLEY, MARCUS		BRANCH DIRECTOR			
DIVISION/GROUP SUPERVISOR		WALTON, DAN		DIVISION/GROUP SUPERVISOR		SISK, WESLEY (T)	
5. Resources Assigned this Period							
Strike Team / Task Force / Resource Designator		LWD	Leader	Number Persons	Drop Off PT./Time	Pick Up PT./Time	
C-7 CR2I FIRESTORM 5 #		09/16	GENE LOPEZ	20	MCCLLOUD ICP/0700	MCCLLOUD ICP/1900	
C-8 CR2I - FIRESTORM WILDLAND FIRE NCC 7B		09/16	CHRIS SPRAGUE	20	MCCLLOUD ICP/0700	MCCLLOUD ICP/1900	
E-35 ENG3 LOS PINOS FPD 25 ENGINE 88 #		09/15	ANDY BARBER	5			
E-27 ENG6 - IDCTF E632 #		09/16	AUSTIN NIELSON	5	MCCLLOUD ICP/0700	MCCLLOUD ICP/1900	
O-13 EMTF PRADO		09/16	ANTHONY PRADO	1	MCCLLOUD ICP/0700	MCCLLOUD ICP/1900	
O-124 EMPF CONNOR		09/18	CONNOR BORUM	1	MCCLLOUD ICP/0700	MCCLLOUD ICP/1900	
O-145 REMS BLACK FLAG		09/19	ROCKY CALDWELL	4	MCCLLOUD ICP/0700	MCCLLOUD ICP/1900	
E-86 AMBO1 - WILDERNESS MEDICS, INC. - C03127		09/17	JAKE JONES	2	MCCLLOUD ICP/0700	MCCLLOUD ICP/1900	
O-146 REMS EMERGENCY RESPONSE LOGISTICS - AIMS - 1202RZ25K5848		09/21		4			
O-6 SOFF GROGAN		09/12	CHRIS GROGAN	1	MCCLLOUD ICP/0700	MCCLLOUD ICP/1900	
O-57 SOF3 - PAYNE			PAYNE (T)	1	MCCLLOUD ICP/0700	MCCLLOUD ICP/1900	
O-156 READ GIBSON			NANCY GIBSON	1	MCCLLOUD ICP/0700	MCCLLOUD ICP/1900	
O-187 READ ESPARZA			JOSEPH ESPARZA	1	MCCLLOUD ICP/0700	MCCLLOUD ICP/1900	
6. Control Operations/Work Assignments:							
<p>TASK: Continue mop up 250' interior of fire's edge and patrol established control lines. Monitor and remain initial attack ready for additional starts within the Temporary Flight Restriction. Continue to back haul any unnecessary equipment to DP-10. Continue repair in accordance with the established suppression repair plan and approval from READs.</p>							
8. Division/Group Communication Summary							
Function	Channel	RX Frequency N/W	RX Tone/NAC	TX Frequency N/W	TX Tone/NAC	Mode	
COMMAND	2	169.7500	T5/146.2	167.1000	T5/146.2	A	
COMMAND	3	173.0375	T5/146.2	167.3250	T5/146.2	A	
TACTICAL	7	168.6000	T5/146.2	168.6000	T5/146.2	A	
9. Prepared By (Resource Unit Leader)			Approved By (Planning Section Chief)			Date	Time
JAMES SIRMANS			RACHEL FONVIELLE			09/10/2025	1132

Division/Group Assignment List (ICS 204 WF)

Controlled Unclassified Information//Basic

1. Incident Name:				3.			
ROOT				Branch:		Division/Group: T	
2. Operational Period: DAY							
Date/Time From: 09/11/2025 0700 THU		Date/Time To: 09/11/2025 1900 THU					
4. Operations Personnel							
FIELD OPERATIONS CHIEF		BEASLEY, MARCUS		BRANCH DIRECTOR			
DIVISION/GROUP SUPERVISOR		WALTON, DAN		DIVISION/GROUP SUPERVISOR		SISK, WESLEY (T)	
6. Control Operations/Work Assignments:							
PURPOSE: Minimize impacts to Castle Creek Road, FS Road 40 and 44, the community of McCloud, and all private and federal lands within the impacted area.							
END STATE: Rehabilitate and repair established control lines to standards outlined in the Approved Fire Suppression Repair Plan.							
7. Special Instructions:							
Resources marked with # are identified for Initial Attack.							
8. Division/Group Communication Summary							
Function	Channel	RX Frequency N/W	RX Tone/NAC	TX Frequency N/W	TX Tone/NAC	Mode	
COMMAND	2	169.7500	T5/146.2	167.1000	T5/146.2	A	
COMMAND	3	173.0375	T5/146.2	167.3250	T5/146.2	A	
TACTICAL	7	168.6000	T5/146.2	168.6000	T5/146.2	A	
9. Prepared By (Resource Unit Leader)			Approved By (Planning Section Chief)			Date	Time
JAMES SIRMANS			RACHEL FONVIELLE			09/10/2025	1132

Controlled Unclassified Information//Basic

1. Incident Name:				3.			
ROOT				Branch:		Division/Group: STAGING	
2. Operational Period: DAY							
Date/Time From: 09/11/2025 0700 THU		Date/Time To: 09/11/2025 1900 THU					
4. Operations Personnel							
FIELD OPERATIONS CHIEF		MARCUS BEASLEY		BRANCH DIRECTOR			
DIVISION/GROUP SUPERVISOR							
5. Resources Assigned this Period							
Strike Team / Task Force / Resource Designator		LWD	Leader	Number Persons	Drop Off PT./Time	Pick Up PT./Time	
E-16 DZR2 - CATTANEO #		09/15	JON ELITS	1	MCCLOUD ICP/0700	MCCLOUD ICP/1900	
E-15 DZR2 - EVANS BROTHERS #		09/15	DOUG EVANS	2	MCCLOUD ICP/0700	MCCLOUD ICP/1900	
O- () HEQB (T) BECKER #		09/10	STEVE BECKER	1	MCCLOUD ICP/0700	MCCLOUD ICP/1900	
O- () HEQB CRIGIER #		09/12	STEVE CRIGIER	1	MCCLOUD ICP/0700	MCCLOUD ICP/1900	
6. Control Operations/Work Assignments:							
Remain prepared for initial attack.							
7. Special Instructions:							
Resources marked with # are identified for Initial Attack.							
8. Division/Group Communication Summary							
Function	Channel	RX Frequency N/W	RX Tone/NAC	TX Frequency N/W	TX Tone/NAC	Mode	
COMMAND							
TACTICAL							
LOGISTICS							
AIR TO GROUND							
9. Prepared By (Resource Unit Leader)			Approved By (Planning Section Chief)		Date	Time	
JAMES SIRMANS			RACHEL FONVIELLE		09/10/2025	1132	

INCIDENT RADIO COMMUNICATIONS PLAN			Incident Name			Date/Time Prepared		Operational Period Date/Time	
			ROOT			9/10/2025 19:01		9/11/2025 0700 to 9/11/2025 1900	
Zn / Ch	Function	Channel Name/Trunked Talkgroup	Assignment	RX Freq	RX Tone/NAC	TX Freq	TX Tone/NAC	Mode A, D, M	Remarks
1	Command	FS SHF-R	Backup/Emergency	171.5750		165.0125	T6 156.7	A	FS Dispatch
2	Command	NIFC C5	All DIVS	169.7500	T5 146.2	167.1000	T5 146.2	A	
3	Command	NIFC C12	All DIVS	173.0375	T5 146.2	167.3250	T5 146.2	A	
4	Command	NIFC C71	N/A	171.8625	T5 146.2	164.6000	T5 146.2	A	NOT AVAILABLE
5	Tactical	NIFC T1	DIV F	168.0500	T5 146.2	168.0500	T5 146.2	A	
6	Tactical	NIFC T2	DIV L	168.2000	T5 146.2	168.2000	T5 146.2	A	
7	Tactical	NIFC T3	DIV T	168.6000	T5 146.2	168.6000	T5 146.2	A	
8	Tactical	NIFC T4	AVAILABLE	166.7250	T5 146.2	166.7250	T5 146.2	A	
9	Tactical	NIFC T5	DIV A	166.7750	T5 146.2	166.7750	T5 146.2	A	
10	Tactical	NIFC T6	AVAILABLE	168.2500	T5 146.2	168.2500	T5 146.2	A	
11	Tactical	VFIRE 23	AVAILABLE	154.2950	T6 156.7	154.2950	T6 156.7	A	
12	Tactical	VFIRE 24	AVAILABLE	154.2725	T6 156.7	154.2725	T6 156.7	A	
13	A/G	A/G CMD	ALL DIVS	164.0250		164.0250		A	
14	A/G	A/G TAC	ALL DIVS	169.0000		169.0000		A	
15	CALCORD	MEDICAL	ALL DIVS	156.0750	T6 156.7	156.0750	T6 156.7	A	MEDIVAC/MEDICAL
16	AIRGUARD	EMERGENCY	ALL DIVS	168.6250		168.6250	T1 110.9	A	EMERGENCY
17									
18									
19									
20	AIRGUARD	EMERGENCY	ALL DIVS	168.6250		168.6250	110.9	A	EMERGENCY
Prepared By (Communications Unit Leader) Lee Weaver COML(T)					Incident Location County Latitude, Longitude				
Deviation is assumed to be narrow band unless otherwise noted in the remarks. Mode refers to either "A" (analog), "D" (digital) or "M" (mixed mode).									FIRESCOPE 1/18/15 v.7
Utilization of any frequency other than those listed on this form are not authorized.									

INCIDENT RADIO COMMUNICATIONS PLAN			Incident Name Initial Attack			Date/Time Prepared 9/10/2025 19:03		Operational Period Date/Time 9/11/2025 0700 to 9/11/2025 1900	
Zn / Ch	Function	Channel Name/Trunked Talkgroup	Assignment	RX Freq	RX Tone/NAC	TX Freq	TX Tone/NAC	Mode A, D, M	Remarks
1	Command	SMMU		166.9875N		166.9875N	T7 167.9	A	
2	Command	SHF-R		171.5750N		165.0125N	T6 156.7	A	
3	Tactical	R5 T4		166.5500N		166.5500N		A	
4	Tactical	R5 T5		167.1125N		167.1125N		A	
5	Tactical	R5 T7		167.9625N		167.9625N		A	
6	Complex	SRVCRPT		171.5000		164.8250	T6 156.7	A	
7	Command	SKU		151.3250	T6 156.7	159.3600	T7 167.9	A	
8	Tactical	CDF T7		151.3400	T16 192.8	151.3400	T16 192.8	A	
9	Tactical	CDF T8		151.3700	T16 192.8	151.3700	T16 192.8	A	
10	Tactical	CDF T9		151.3850	T16 192.8	151.3850	T16 192.8	A	
11	Command	CDF C10		151.1900	T8 103.5	159.2250	T2 123.0	A	ANTELOPE
12	Command	SIS CMD		154.2500		156.1050	T7 167.9	A	
13	Medical	CALCORD		156.0750	T6 156.7	156.0750	T6 156.7	A	
14	Tactical	R5 AG08		166.8750		166.8750		A	
15	A/G	A/G 43		167.6000N		167.6000N		A	
16	AIRGUARD	AIRGUARD	ALL DIVS	168.6250		168.6250	110.9	A	EMERGENCY
17									
18									
19									
20	AIRGUARD	AIRGUARD	ALL DIVS	168.6250		168.6250	110.9	A	EMERGENCY
Prepared By (Communications Unit Leader) Lee Weaver COML(T)					Incident Location County Latitude, Longitude				
Deviation is assumed to be narrow band unless otherwise noted in the remarks. Mode refers to either "A" (analog), "D" (digital) or "M" (mixed mode).									FIREScope 1/18/15 v.7
Utilization of any frequency other than those listed on this form are not authorized.									

SAFETY MESSAGE



Safety Message

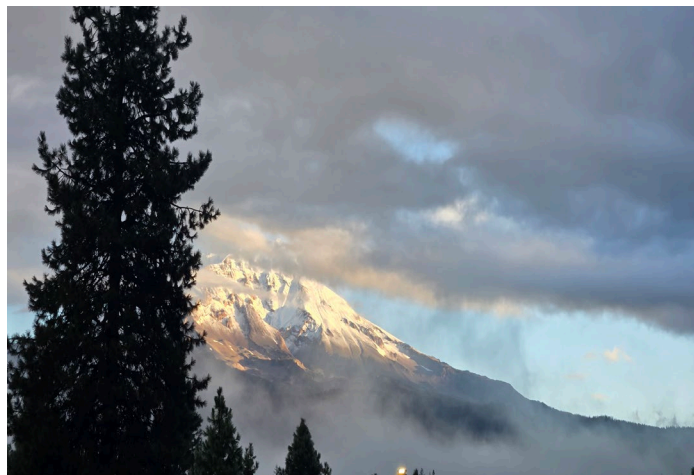
Root Fire

September 11, 2025

Major Hazards and Risks

- **Hazardous Roads:** Mop up mentality, narrow roads, steep drop-offs, erratic drivers, and operator fatigue are all prevalent on this and other assignments. Watch out!
- **Hazardous Trees:** Dead snags and live green trees are one of the most common risks encountered on the fire line. All firefighters should frequently survey their area for potential hazard trees.
- **Extended Extraction Times:** Be familiar with the medical plan. Develop a plan on how you would get an injured firefighter out timely. Factor in how smoke inversions will reduce the likelihood of utilizing helicopters for a medevac.
- **Wildlife:** Cleanup work areas and pick up after yourself while managing your waste.

Stay alert, pace yourself, and watch out for each other.



-A Day of Remembrance-

Patriot Day is a solemn observance in the United States, held annually on September 11th to honor the memory of the nearly 3,000 victims who lost their lives in the terrorist attacks on September 11, 2001.

Safety Officers

Georgia IMT

Leland Bass SOFC(T)

Eric Evans SOF3(t)

IAP Map

Root
CA-SHF-001036
09/11/2025

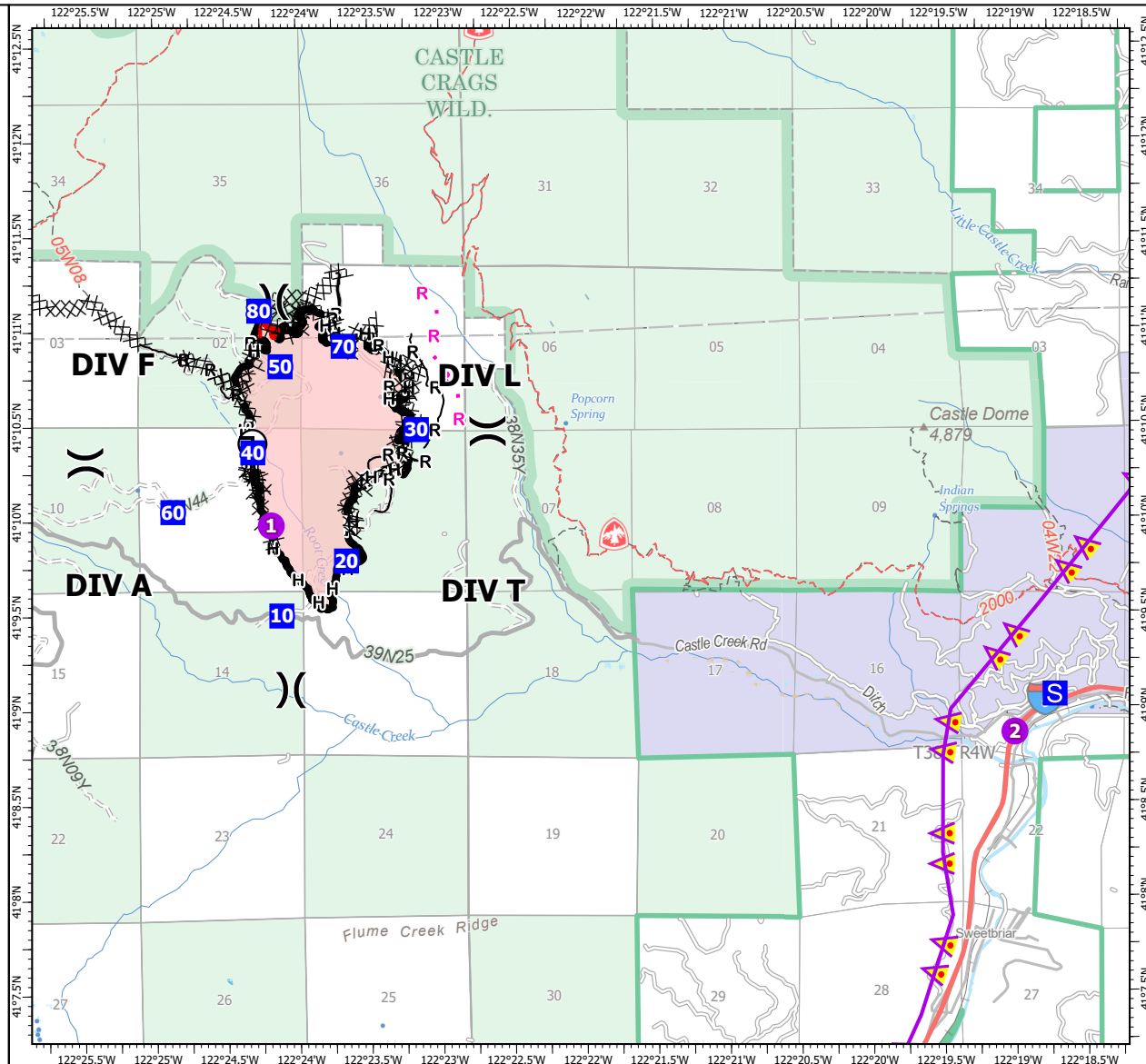
729 acres at 09/10/2025 @ 0816

- Label Point
- ((Division Break
- Helispot
- Drop Point
- S Staging Area
- ⌊ Draft Site
- ⌘ Completed Dozer Line
- H Completed Hand Line
- R Completed Road as Line
- P Planned Road as Line
- ▲ Aerial Hazard
- ▬ Contained Fire Edge
- ▬ Uncontained Fire Edge
- ▬ Wildfire Perimeter

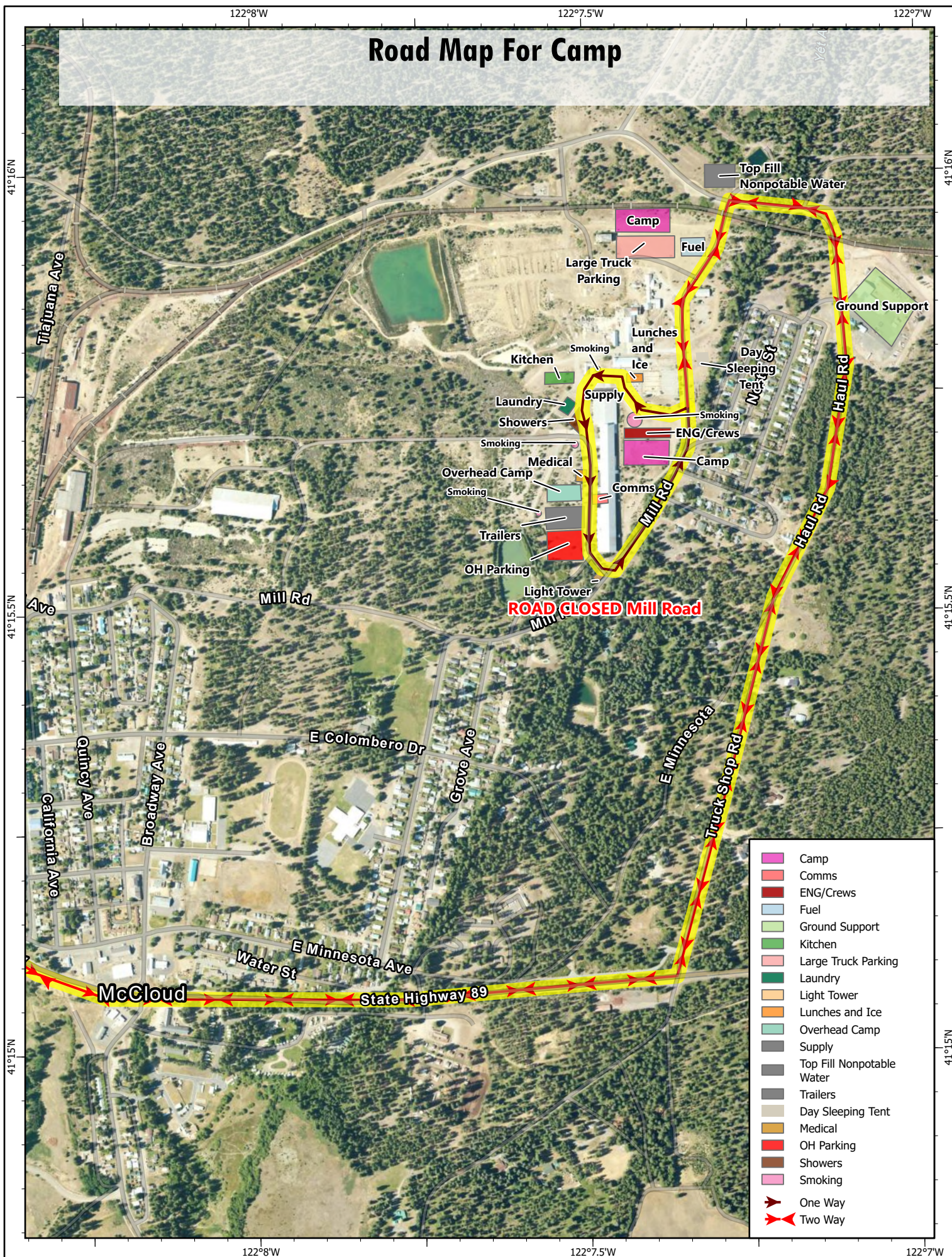


0 0.25 0.5 1
Miles

1:51,835 | GFC IMT | 9/10/2025 1927
Acres from IR and GPS
North American 1983 Datum, Lat/Long Grid



Road Map For Camp



READ Message

The areas you are helping to protect include various significant natural and cultural resources. There are plants, animals, and cultural history associated with this area that in some cases can only be found here!

Sensitive areas are being identified with yellow & white striped, black letter "EQUIPMENT EXCLUSION ZONE" flagging. In general, these are ground disturbance avoidance zones. Heavy equipment is asked to stay on existing roads and walk through with blades up. Hand treatments are preferred. Please work with the available Resource Advisors if you have questions.



INCIDENT TRAINING

TRAINEE REGISTRATION & EXIT INTERVIEW

DON'T WAIT!

To receive a final training packet you must register and complete an exit interview using the QR Code. Prior to demob ensure you receive ink in your taskbook and a performance evaluation.

RIST - Incident Training



916-581-0148



rist.resources@firenet.gov



INFORMATION MESSAGE

Please send us your pictures from the field.

We want to show the community the good work you're doing!

Please be sure you're **wearing proper PPE**.

Email photos/videos to: 2025.root@firenet.gov



LOGISTICS MESSAGE

CAMP HOURS:

Kitchen Hours

Breakfast 0530 - 0930

Supper 1800 - 2130

Shower 0500 - 1200

1400 - 2200

Laundry 0500 2200

SAMPLE

GENERAL MESSAGE (ICS 213)

Number assigned
by Ordering

1. Incident Name (Optional): FIRE NAME		
2. To (Name and Position): SUPPLY UNIT_ORDERING		
3. From (Name and Position):		
4. Subject: ex. Supply Order for DIV Z	5. Date: XX/XX/XXXX	6. Time: XXXX
7. Message: What: Supply order for: Quantity ex. 2 x Boxes orange flagging, items not in local cache Where: Deliver to: ROOT ICP When/DTN: (NOT ASAP) 24 hours from request & will take sooner Why: What is need/justification (as per buying team)/ add special instructions Point of Contact: Name/Cell/TAC Channel etc. <i>USE CAPS or WRITE CLEARLY Please</i>		
8. Approved by: Name: _____ Signature: _____ Position/Title: _____		
9. Reply: <i>Submit Orders to:</i> <i>2025.root.ordering@firenet.gov</i>		
10. Replied by: Name: _____ Position/Title: _____ Signature: _____		
ICS 213		Date/Time: _____

FINANCE AND CHECK-IN

2025.root.finance@firenet.gov

PLEASE EMAIL THE FOLLOWING DOCUMENTS AT CHECK IN:

FED Equipment/Crews: <ul style="list-style-type: none">• Manifest - showing employment type (GS, GW, or WG) or AD rates if applicable• Inspections• Casual Hire Forms for any ADs	Overhead: <ul style="list-style-type: none">• AD/Casual Hire Form• If regular Agency please ensure GS, GW, or WG is written on your CTR	Contract Equipment, Crews, and Overhead: <ul style="list-style-type: none">• Manifest• Inspections	Cooperator: <ul style="list-style-type: none">• Cooperative Agreement• Inspections• Manifest
--	---	--	---

Submit Shift Tickets and/or Crew Time Reports every day via email

When emailing finance:

- ❖ Subject line needs to include RO # and Name
- ❖ Ensure your RO# is written on your Shift Tickets and CTRs



LG/OES Time and Reimbursement (CFAA)



Cal OES Check-in



MARS

If you are responsible for completing F42's and reimbursement documentation, please ensure you are registered in MARS and have a Username and Password prior to DMOB as ALL F42's will be completed electronically through MARS. Contact the OES Rep prior to leaving camp to ensure your times are completed correctly to avoid any unwanted delays.

Cal OES AREP: Rick Young

(916) 541-3165

rick.young@caloes.ca.gov



DEMOB MESSAGE

TENTATIVE DEMOB LIST

9/11/2025	
O-122	Brian Ramsey

9/12/2025	

9/13/2025	
O-6	Chris Grogan

DEMOB INSTRUCTIONS:

- Come to the GIS trailer or Planning trailer to let us know you are beginning demobilization.
- Go to Supply and return any checked out equipment.
- Visit Ground Support for final equipment inspection.
- Head to Finance for final 288 and 286 forms.

Looking for reassignment?

Let Plans know when you begin demob.

ACTIVITY LOG (ICS 214)

1. Incident Name:		2. Operational Period: Date From: 09/07/2025 Date To: 09/9/2025 Time From: 0700 Time To: 0700	
3. Name:	4. ICS Position:	5. Home Agency (and Unit):	
6. Resources Assigned:			
Name	ICS Position	Home Agency (and Unit)	
7. Activity Log:			
Date/Time	Notable Activities		
8. Prepared by: Name: _____ Position/Title: _____ Signature: _____ ICS 214, Page 1 Date/Time: _____			

ICS-206 MEDICAL PLAN	1. Incident Name ROOT FIRE	2. Date Prepared 9/10/2025	3. Time Prepared 1543	4. Operational Period 9/10-9/12/2025				
5. Incident Medical Aid Station								
Medical Aid Stations	Location			Level of Care ALS BLS				
MEDICAL AID TENT	ICP			X				
AMBO 1	ICP			X				
6. Transportation								
A. Ambulance Services								
Name	Address	Phone	Level of Care ALS BLS					
MT SHASTA AMBULANCE	1020 OAK STREET MT SHASTA CA	(530)926-3420	X					
MCCLOUD AMBULANCE	409 TUCCI AVE MCCLOUD CA	(530)859-5123		X				
HOIST 891/894 (ARMY AIR) (HOIST, NVG)	REDDING AIRPORT	REDDING DISPATCH	X					
PHI AIR MEDICAL	REDDING	REDDING DISPATCH	X					
CHP H-14/ H-16 (HOIST, NVG)	REDDING	REDDING DISPATCH	X					
B. Incident Ambulances								
Name	Location			Level of Care ALS BLS				
AMBO 2	FIRE LINE DP 10			X				
AMBO 1	ICP			X				
7. Hospitals								
Name	Address	Travel Time Air Grnd		Phone	Helipad Yes No		Burn Center Yes No	
MERCY MEDICAL CENTER MT SHASTA (L3)	914 PINE ST MT SHASTA 41 19.117 – 122 19.203	10 MIN	30 MIN	(530)6266111	X			X
MERCY MEDICAL CENTER REDDING (L2)	2175 ROSALINE AVE REDDING 40 34.335 – 122 23.798	25 MIN	2 HRS	(530)2256000	X			X
SHASTA REGIONAL MC (L3)	1100 BUTTE ST REDDING 40 35.136 – 122 23.269	25 MIN	2 HRS	(530)2445400	X			X
UC DAVIS MC (L1)	2315 STOCKTON BLVD SACRAMENTO 38 33.293 – 121 27.317	1.5 HRS	4 HRS	(916)7343636	X		X	
IN CAMP BETWEEN THE HOURS OF 2130-0600 CALL THE MEDL NUMBER POSTED ON THE DOOR. BETWEEN 0600-2130 WALK IN THE MEDICAL TENT AND/OR THE ON DUTY AMBO. TWO REMS TEAMS ARE AVAILABLE ON THE FIRE LINE IF NEEDED FOR RESCUE OR EXTRACTION THEY CAN BE REACHED THROUGH INCIDENT COMMUNICATIONS.8.								
Medical Emergency Procedures								
9. Prepared by (Medical Unit Leader)					10. Reviewed by (Safety Officer)			
<i>layne paulk medlt</i>					<i>Island Bass</i> 9/11/2025			

MEDICAL PLAN (ICS 206 WF)

Controlled Unclassified Information//Basic

Medical Incident Report

FOR A NON-EMERGENCY INCIDENT, WORK THROUGH CHAIN OF COMMAND TO REPORT AND TRANSPORT INJURED PERSONNEL AS NECESSARY.

FOR A MEDICAL EMERGENCY: IDENTIFY ON SCENE INCIDENT COMMANDER BY NAME AND POSITION AND ANNOUNCE "MEDICAL EMERGENCY" TO INITIATE RESPONSE FROM IMT COMMUNICATIONS/DISPATCH.

Use the following items to communicate situation to communications/dispatch.

1. CONTACT COMMUNICATIONS / DISPATCH (Verify correct frequency prior to starting report)

Ex: "Communications, Div. Alpha. Stand-by for Emergency Traffic."

2. INCIDENT STATUS: Provide incident summary (including number of patients) and command structure.

Ex: "Communications, I have a Red priority patient, unconscious, struck by a falling tree. Requesting air ambulance to Forest Road 1 at (Lat./Long.) This will be the Trout Meadow Medical, IC is TFLD Jones. EMT Smith is providing medical care."

Severity of Emergency / Transport Priority	<input type="checkbox"/> RED / PRIORITY 1 Life or limb threatening injury or illness. Evacuation need is IMMEDIATE Ex: Unconscious, difficulty breathing, bleeding severely, 2° – 3° burns more than 4 palm sizes, heat stroke, disoriented. <input type="checkbox"/> YELLOW / PRIORITY 2 Serious Injury or illness. Evacuation may be DELAYED if necessary. Ex: Significant trauma, unable to walk, 2° – 3° burns not more than 1-3 palm sizes. <input type="checkbox"/> GREEN / PRIORITY 3 Minor Injury or illness. Non-Emergency transport Ex: Sprains, strains, minor heat-related illness.	
Nature of Injury or Illness & Mechanism of Injury		Brief Summary of Injury or Illness (Ex: Unconscious, Struck by Falling Tree)
Transport Request		Air Ambulance / Short Haul/Hoist Ground Ambulance / Other
Patient Location		Descriptive Location & Lat. / Long. (WGS84)
Incident Name		Geographic Name + "Medical" (Ex: Trout Meadow Medical)
On-Scene Incident Commander		Name of on-scene IC of Incident within an Incident (Ex: TFLD Jones)
Patient Care		Name of Care Provider (Ex: EMT Smith)

3. INITIAL PATIENT ASSESSMENT: Complete this section for each patient as applicable (start with the most severe patient)

Patient Assessment: See IRPG page 106

Treatment:

4. TRANSPORT PLAN:

Evacuation Location (if different): (Descriptive Location (drop point, intersection, etc.) or Lat. / Long.) Patient's ETA to Evacuation Location:

Helispot / Extraction Site Size and Hazards:

5. ADDITIONAL RESOURCES / EQUIPMENT NEEDS:

Example: Paramedic/EMT, Crews, Immobilization Devices, AED, Oxygen, Trauma Bag, IV/Fluid(s), Splints, Rope rescue, Wheeled litter, HAZMAT, Extrication

6. COMMUNICATIONS: Identify State Air/Ground EMS Frequencies and Hospital Contacts as applicable

Function	Channel Name/Number	Receive (RX)	Tone/NAC *	Transmit (TX)	Tone/NAC *
COMMAND					
AIR-TO-GRND					
TACTICAL					

7. CONTINGENCY: Considerations: If primary options fail, what actions can be implemented in conjunction with primary evacuation method? Be thinking ahead.

8. ADDITIONAL INFORMATION: Updates/Changes, etc.

REMEMBER: Confirm ETA's of resources ordered. Act according to your level of training. Be Alert. Keep Calm. Think Clearly. Act Decisively.