

INCIDENT ACTION PLAN SITES INCIDENT

CA-LNU-011083

Tuesday

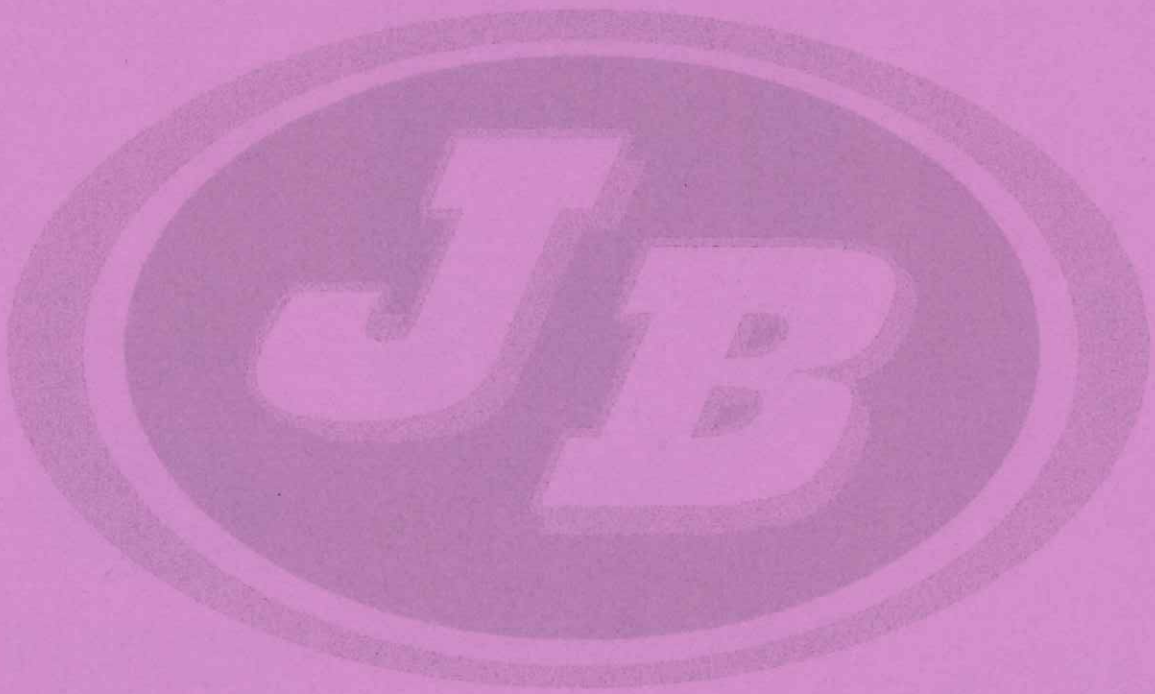


OPERATIONAL PERIOD

6/25/2024	0700
to	
6/26/2024	0700



This page left intentionally blank



INCIDENT OBJECTIVES (ICS 202)

1. Incident Name: <p style="text-align: center;">SITES</p>	2. Operational Period:	Date From: 6/25/2024 Date To: 6/26/2024 Time From: 0700 Time To: 0700
--	-------------------------------	--

3. Objective(s):

Management Objectives

- Provide for emergency personnel and public safety at all times.
- Protect property, improvements, and infrastructure.
- Ensure coordinated, timely and accurate release of public information.
- Foster and maintain relationships with all cooperators and stakeholders.
- Protect economic, natural, cultural and heritage resources.
- Ensure costs are aligned with mission priorities.

Sites Fire Branches V and VII Control Objectives

- Keep the fire within the current perimeter

General Situational Awareness:

Steep and rugged terrain, critically dry and receptive fuel beds, active area for fire history and drought stressed trees.

5. Site Safety Plan Required? Yes No


Approved Site Safety Plan(s) Located at:

6. Incident Action Plan

<input checked="" type="checkbox"/> ICS 203	<input checked="" type="checkbox"/> ICS 215A	<input type="checkbox"/> ICS 205 A	<input type="checkbox"/>
<input checked="" type="checkbox"/> ICS 204	<input checked="" type="checkbox"/> ICS 220	<input checked="" type="checkbox"/> Training Message	<input type="checkbox"/>
<input checked="" type="checkbox"/> ICS 205	<input checked="" type="checkbox"/> Facility Maps	<input checked="" type="checkbox"/> Travel Map	<input type="checkbox"/>
<input checked="" type="checkbox"/> ICS 206	<input checked="" type="checkbox"/> Weather Forecast	<input checked="" type="checkbox"/> Demob Plan	<input type="checkbox"/> County Health Message
<input checked="" type="checkbox"/> ICS 208	<input checked="" type="checkbox"/> Fire Behavior	<input checked="" type="checkbox"/> Finance Message	<input checked="" type="checkbox"/> ICS 214

7. Prepared By: David Shy	Position/Title: PSC	Signature:
8. Approved by Incident Commander:	Andy Turner	Signature:

ORGANIZATION ASSIGNMENT LIST (ICS 203)

1. Incident Name:		2. Operational Period: Date From: 6/25/2024		Date To: 6/26/2024	
SITES		Time From: 0700		Time To: 0700	
3. Incident Commander(s) and Command Staff:			7. Operation Section:		
IC/UC's	Dusty Martin, Scott Corn (T), Bob Counts (T)	Operations	Kent Cunningham, Rob Wettstein (T)		
Deputy	Andy Turner	Deputy Operations	Shane Lauderdale, Matt Brown (T), Mike Batham (T)		
Safety Officer	Clinton Hamilton	Night Ops	Erich Schwab, Trevyn Close (T)		
Information Officer	Lucas Spelman, Jas Shaw, Wendy Oaks (T)	Staging Area			
Liaison Officer	Dave Pender, Mitch Villapando, Dave Barnett, Lonny Olson (T)	Branch	V	Jake Keown	
4. Agency/Organization Representatives:		Division/Group	AA	Seth Pindell	
Agency/Organization	SITES AREP	Division/Group	DD/JJ	Michael Marquardt	
LNU Line Officer	Justin Benguerel	Division/Group	MM	Joel McGaffee	
CAL OES	Rick Young	Division/Group			
BLM	Ray Ucha	Division/Group			
Colusa SO	Mike Bradwell	Branch	VII	Shane Frederick	
Colusa EOC	Kris Cooper	Division/Group	RR	Joshua Lau	
PG & E	Mike Weber	Division/Group	ZZ	Mike Hildebrand	
Williams Fire Authority	Jeff Gilbert	Division/Group			
	POINT AREP	Division/Group			
LNU Line Officer	Ben Nicholls	Division/Group			
CHP	Russ Ingles	Branch	Suppression Repair	Luke Stacher (12), Dawn Pedersen(12)	
PG & E	Brian Diemer	Division/Group	Suppression Repair 1	Mike Watner (12)	
Sonoma DEM	James Coocer	Division/Group	Suppression Repair 2	Anthony Pescatore (12)	
Sonoma SO	John Molinari	Division/Group	Suppression Repair 3	Ryan Wimmer (T)(12)	
CAL OES	Corey Zander	Division/Group			
Army Corps of Engineers	Jonna Hildenbrand	Division/Group			
5. Planning Section:		Division/Group			
Chief	Gwyndolyn Ozard	Division/Group			
Deputy	Dave Shy	Branch	Staging		
Resource Unit	David Newell, Julie Rhoads, Mark Thomas, Nochella Ozard, Matt Selzer, Jan Land (T)	Division/Group	Sites Staging		
Situation Unit	Nick Wallingford, Dan Sooy (T)	Division/Group			
CDCR)umentation Unit	Hannah Billows	Division/Group			
Demobilization Unit	Chris Lynch, Brian Torosian	Division/Group			
GISS	Daniel Funderburg	Division/Group			
FBAN	Jon Pangburn, Russ Dollarhide (T)	Division/Group			
IMET	Mike Seaman	Division/Group			
Training Tech Spec	Dennis Martin	Air Operations Branch		Director:	G. Bradshaw, N. Matteoli
Hired Equipment	Tim Bingham, Jake Lefort (T)	Air Support Group Supervisor		Josh Faulkner, Kenny Dossey	
Crew Tech Spec		Air Tactical Group Supervisor		Kyle Lunsted	
6. Logistics Section		Helibase Manager		Jake Lelmorini	
Chief	Matt Reich, Jason Warden , Travis Heard (T)				
Supply Unit	Daniel Williams	8. Finance/Administration Section:			
Facilities Unit	Jason Wilson, Obet Martinez, Justin Finley	Chief	Bill Stirton, Shane Beck (T)		
Ground Support Unit	Conor Stapleton	Deputy	Greg Tunzi		
Communications Unit	Mike Heyfron	Time Unit	Robert Chesnick, Tim Holsworth (T)		
Medical Unit	Steve McGary	Procurement Unit	Matt Stark		
FDUL	Jesse McGuire	Comp/Claims Unit	Chad Nadey		
Ordering Manager	Robyn Williams	Cost Unit	Derek McTiernan		
Motel Unit	Dawn Muschetto				
Prepared By: Name:	David Shy	Position/Title:	PSC	Signature:	
ICS 203		Date/Time:	6/24/2024 2300 hours		



Sites Fire Weather FORECAST

IMET contact - (816) 589-0168

FORECAST NO: 7
PREDICTION FOR: TUESDAY and WEDNESDAY
FORECAST ISSUED: 06/24/2024 at 1900

NAME OF FIRE: Sites
SHIFT DATE: June 25, 2024
SIGNED: *Mike Seaman*
Incident Meteorologist (Mike Seaman)

WEATHER DISCUSSION: A plume of mid and high-level moisture will pass over the fire area today providing a mixture of shading and filtered sunshine. A stray shower or thunderstorm may briefly impact the fire area throughout the day, and any rainfall which might occur would be limited to a couple hundredths of an inch. Otherwise, this increase in cloud cover will limit mixing, allowing for a slight cooling trend along with an uptick in relative humidity. Winds will follow a typical diurnal cycle, with southeast winds through much of the afternoon before transitioning to southwest and peaking in speed during the 1700-2000 period. Wednesday will bring slightly cooler temperatures, higher RH and an increase in westerly winds by mid-afternoon.

FORECAST for TODAY: *ISOLATED THUNDERSTORMS WITH LIGHTNING AND GUSTY WINDS TODAY*****

WEATHER: Filtered sunshine with periods of mid and high clouds (40-50% shading). Isolated (15% chance) showers and thunderstorms throughout the day.

MAX TEMP: 92-96° F **Trend:** Down 2-4 ° F

MIN RH: 21-25% **Trend:** Up 3-5%

20 FT WINDS:

Slope/valley... Down-drainage 2-6 mph early, becoming southeast 4-8 mph with gusts 10-14 mph after 1100.
Ridgetop..... North 3-6 mph early, becoming southeast 6-9 mph with gusts 12-15 mph after 1100.

INVERSION: Lifting to 3000 ft by 0900, then rising above 5000 ft after 1400.

MAX AFTERNOON MIXING HEIGHT: 5,500 ft AGL

TRANSPORT WINDS: Southwest 10 mph.

CHANCE OF PRECIP: 15%

CWR: 0%

LAL: 2

TONIGHT:

WEATHER: Partly Cloudy (40-50% cloud cover).

MIN TEMP: 63-67° F **MAX RH:** 45-55%

20 FT WINDS:

Slope/valley: Southwest 4-8 mph with gusts 14-18 mph, becoming down-drainage 3-7 mph after 2200.
Ridgetop: Southwest 6-9 mph with gusts 16-20 mph, becoming north 3-6 mph after 2100.

INVERSION: Developing after 2000.

CHANCE OF PRECIP: 0%

CWR: 0%

LAL: 1

WEDNESDAY:

***** GUSTY WESTERLY WINDS MID TO LATE AFTERNOON *****

WEATHER: Periods of mid and high clouds (20-30% shading) through 1100, then sunny (0-5% shading).

MAX TEMP: 91-95° F **Trend:** Down 1-2° F

MIN RH: 19-23% **Trend:** Down 1-2%

20 FT WINDS:

Slope/valley... Down-drainage 3-6 mph early, becoming southeast 4-8 mph with gusts 10-14 mph after 1000, then shifting to west 6-12 mph with gusts 20-25 mph after 1400.
Ridgetop..... North 3-6 mph early, becoming southeast 6-9 mph with gusts 12-15 mph after 1000, then shifting to west 8-14 mph with gusts 24-28 mph after 1400

INVERSION: Lifting to 3000 ft by 0900, then rising above 7000 ft after 1300.


MAX AFTERNOON MIXING HEIGHT: 7,500 ft AGL

TRANSPORT WINDS: West 15 mph.

CHANCE OF PRECIP: 0%

CWR: 0% **LAL:** 1

FIRE BEHAVIOR FORECAST

FORECAST NUMBER: 7	TYPE OF FIRE: Wildland
FIRE NAME: Sites	OPERATIONAL PERIOD: 6/25-6/26, 0700-0700
DATE ISSUED: 6/24/2024	TIME ISSUED: 1730
UNIT: CA-LNU-011083	SIGNED: 
Typed/printed: Ross Dollarhide, FBAN(T)	

INPUTS

WEATHER SUMMARY: *LAL of 2; WATCH FOR OUTFLOW WINDS*

Moderating temps, increasing clouds, chance of t-storms

Temp: 92-96 max; 63-67 min

RH: 21-25% min; 55-60% max CWR: 15%

Wind: SE 6-9, gust 12-15 day; SW 6-9, gust 16-20 night

OUTPUTS

FIRE BEHAVIOR

GENERAL: ***Refer to included Fuels & Fire Behavior Advisory***

Chance of thunderstorms with gusty winds. Fire behavior table below is representative of expected conditions in an initial attack scenario. Fine fuels remain extremely receptive with a PIG of 100%; maintain operational readiness to aggressively attack new starts/spot fires.

In the absence of weather conditions outside the forecast or extreme fire behavior conditions expect:

	Max. Flame Length	Max. Rate of Spread	Spotting	Probability of Ignition
Grass	6-8' (1.8-2.4 m)	80-100 ft/min (1.5-1.8 km/hr)	< 0.2 mile (0.3 km)	100%
Grass-Shrub	6-8' (1.8-2.4 m)	30-50 ft/min (0.5-0.9 km/hr)	< 0.2 mile (0.3 km)	100%
Shrub	15-20' (4.5-6 m)	80-100 ft/min (1.5-1.8 km/hr)	< 0.5 mile (0.8 km)	100%
Timber Understory	8-12' (2.4-3.6 m)	40-50 ft/min (0.7-0.9 km/hr)	< 0.3 mile (0.5 km)	100%

****minimum safety zone size is 0.8 acre (0.3 Ha) for a Strike Team of Engines in Brush.**

****minimum safety zone size is 0.4 acres (0.2 Ha) for a Strike Team of Engines in Timber Understory.**

SPECIFIC:

Branch V: No fire behavior anticipated.

Branch VII: No fire behavior anticipated.

****Refer to the table above for expected fire behavior values in a free-burning environment****

AIR OPERATIONS:

Scattered cloudy conditions with the inversion lifting to 5,000' by 1400. Mixing height: 5,500 ft. AGL

Transport winds: SW 10 mph, Sunrise 0544, Sunset 2039.

SAFETY

Stay vigilant: downdraft winds can rapidly accelerate the rate of spread on newly ignited fires, posing significant challenges for containment efforts and firefighter safety.

Fuels and Fire Behavior Advisory

California Grass and Herbaceous-Dominated Ecosystems

June 24, 2024

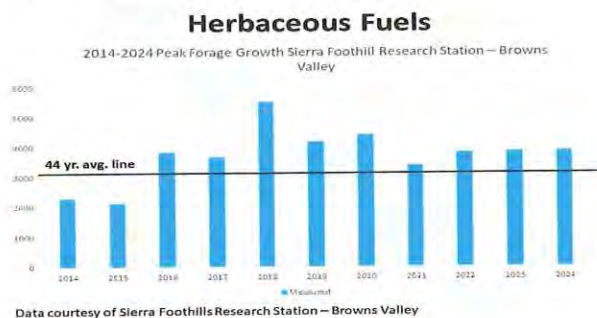


Subject: Herbaceous fuel loadings are above to well above average across most of California's grass-dominated systems, including typically arid deserts and valleys that often do not support fire growth.

Discussion: Precipitation and temperature alignments throughout the winter and spring of 2024 have resulted in an above average load of herbaceous fuels across many grass-dominated systems throughout California. The above normal grass and herbaceous load creates a continuous fuel bed, allowing for rapid spread of fires when these fuels are cured. The continuous nature of the herbaceous fuel bed is enhanced by remnant thatch resulting from herbaceous growth during the abnormally wet late summer and fall of 2023 and multiple consecutive years of above average herbaceous growth.

Difference from normal conditions:

Herbaceous fuel loading in the Sacramento Valley and foothills is near 120% of normal, with reports of loading exceeding normal by a higher level across South Ops and the NE portion of the state. Below 3,000ft these fuels are nearly to fully cured. Curing and drying is increasing at upper elevations as the state enters a period of rapid heating with widespread single digit RH in the areas of concern.



Concerns to Firefighters and the Public:

- Continuous fuel loading lowers the wind threshold need to initiate rapid spread of fires during initial attack. Under what are typically low to moderate wind speeds, rates of spread and flame lengths are likely to exceed direct attack capabilities without significant support from aircraft.
- Areas that typically resist fire spread, such as grazed areas, may not slow fire growth or reduce fire behavior as expected.
- Continuous fuels in arid and semi-arid ecosystem in deserts and high valleys are likely to support continuous fire spread in areas typically considered non-burnable.
- Heavy and continuous cured herbaceous fuels may serve as a catalyst for fire spread into brush fuel types, even at fuel moisture levels that would otherwise make them resistant to rapid fire spread.

Mitigation Measures:

- Brief all incoming resources about these conditions, especially out-of-area resources unfamiliar with local conditions.
- Consider augmentation of aircraft response for initial attack is in areas of heavy herbaceous fuels.
- Fire behavior prediction simulations using fuel models GR1 and GR2 are likely to underpredict spread; modification to GR4 or GR7 may be needed to accurately model fire spread in herbaceous fuels.
- Modify tactics to account for increased fire line intensity and spotting.

Area of Concern:

Across Central and Southern California, areas of concern focus on foothills, grasslands and deserts at or below 3,000 ft. in elevation. This includes portions of the following predictive services areas: NC02, NC03A, NC03B, NC04, NC05, NC07, and all South Ops PSA's.

Across the northeast portion of the state this includes hills, valleys, and deserts near and below 5,500 ft in elevation in parts of predictive services areas NC06 and NC08.

Issued By: Predictive Services Units from Northern California and Southern California, in coordination with Cal Fire and Cal OES Fire and Rescue Division.

Fuels and Fire Behavior Advisory

California Grass and Herbaceous-Dominated Ecosystems

June 24, 2024



INCIDENT SAFETY MESSAGE (ICS 208)

1. Incident Name: SITES	2. Operational Period: Date From: 06/25/24 Time From: 0700	Date To: 06/26/24 Time To: 0700
-----------------------------------	--	------------------------------------

Complacency: Complacency is a silent threat. Never underestimate the risks, even with familiar tasks. Stay focused on your surroundings, communicate effectively and watch out for each other.

PERSONAL PROTECTIVE EQUIPMENT

- Proper PPE is your shield against fireline hazards.
 - Wear the right gear for the task at hand.
 - Properly worn PPE reduces risk and increases work production.
- Remember, if its foreseeable it's preventable; foresight leads to preparedness and precaution.

STANDARD FIREFIGHTING ORDERS

1. Keep informed on fire weather conditions and forecasts.
2. Know what your fire is doing at all times.
3. Base all actions on current and expected behavior of the fire.
4. Identify escape routes and safety zones, and make them known.
5. Post lookouts when there is possible danger.
6. Be alert. Keep calm. Think clearly. Act decisively.
7. Maintain prompt communications with your forces, your supervisor, and adjoining forces.
8. Give clear instructions and be sure they are understood.
9. Maintain control of your forces at all times.
10. Fight fire aggressively, having provided for safety first.

WATCH OUT SITUATIONS

1. Fire not scouted and sized up.
2. In country not seen in daylight.
3. Safety zones and escape routes not identified.
4. Unfamiliar with weather and local factors influencing fire behavior.
5. Uninformed on strategy, tactics, and hazards.
6. Instructions and assignments not clear.
7. No communication link with crewmembers or supervisor.
8. Constructing line without safe anchor point.
9. Building fireline downhill with fire below.
10. Attempting frontal assault on fire.
11. Unburned fuel between you and fire.
12. Cannot see main fire; not in contact with someone who can.
13. On a hillside where rolling material can ignite fuel below.
14. Weather becoming hotter and drier.
15. Wind increases and/or changes direction.
16. Getting frequent spot fires across line.
17. Terrain and fuels make escape to safety zones difficult.
18. Taking a nap near fireline.

FATIGUE, HEAT, & HYDRATION

- Monitor yourself and your personnel for fatigue.
- Ensure you and your crew are properly hydrated.
- Avoid complacency; maintain appropriate Work/Rest cycles.
 - Seek shade when possible.
 - Time to Think = Time to Drink. Stay Hydrated.



6. Be alert. Keep calm. Think clearly. Act decisively.



CAL FIRE INCIDENT MANAGEMENT TEAM 4

3. Prepared by: Name: James Allen	Position/Title: SOF3 (T)	Signature:
ICS 208	IAP Page _____	Date/Time: 06/24/24 1900



SAFETY MESSAGE

DEMOBILIZATION



We would like to thank you for your assistance. We wish you safe travels home or to your next assignment. Below are a few reminders to make your trip safer:

- Conduct a walk around before driving
- Check for and secure all loose items (ie: tools, hose, and packs)
- Wear seat belts at all times
- Monitor all drivers for fatigue,
 - Switch drivers regularly if possible
 - Find a safe place to stop, exit the vehicle and stretch
 - If all else fails, stop and take a short rest to revitalize
- Obey Posted Speed Limits
- Ensure Personnel have adequate nutrition and hydration for the trip
- Be prepared for the next incident

Thank you again for your hard work!

ICS 205 - INCIDENT RADIO COMMUNICATIONS PLAN

CONTROLLED UNCLASSIFIED
INFORMATION//BASIC

1. Incident Name: SITES		2. Date/Time Prepared Date: 06/24/2024 Time: 1630		3. Operational Period: Date From: 06/25/24 Time From: 0700		Date To: 06/26/24	
Incident Channels				Time To: 0700			


Ch#	Function	Name	Assigned To	Rx Freq	Rx Tone	Tx Freq	Tx Tone	Mode	Notes
1	COMMAND	CDFC1T12	ALL DIVS	151.3550	(T8) 103.5	159.3000	(T12) 127.3	A	WALKER RIDGE, Tone 12
2	COMMAND	CDFC1T15	ALL DIVS	151.3550	(T8) 103.5	159.3000	(T15) 162.2	A	North Side of Incident, Tone 15
3									
4									
5	TACTICAL	CDF T14	DIV AA	159.3075	(T16) 192.8	159.3075	(T16) 192.8	A	BRANCH V
6	TACTICAL	CDF T16	DIV RR	151.3475	(T16) 192.8	151.3475	(T16) 192.8	A	BRANCH VII
7	TACTICAL	CDF T17	DIV MM	151.3925	(T16) 192.8	151.3925	(T16) 192.8	A	BRANCH V
8	TACTICAL	CDF T18	DIV DD / JJ	159.3825	(T16) 192.8	159.3825	(T16) 192.8	A	BRANCH V
9	TACTICAL	CDF T19	DIV ZZ	151.2425	(T16) 192.8	151.2425	(T16) 192.8	A	BRANCH VII
10	TACTICAL	NIFC T1	SITES STAGING	168.0500	(T5) 146.2	168.0500	(T5) 146.2	A	SITES STAGING
11	TACTICAL	NIFC T2	SUPP REPAIR 1	168.2000	(T5) 146.2	168.2000	(T5) 146.2	A	SUPPRESSION REPAIR 1
12	TACTICAL	NIFC T3	SUPP REPAIR 2	168.6000	(T5) 146.2	168.6000	(T5) 146.2	A	SUPPRESSION REPAIR 2
13	TACTICAL	NIFC T4	SUPP REPAIR 3	166.7250	(T5) 146.2	166.7250	(T5) 146.2	A	SUPPRESSION REPAIR 3
14	AVG	CDF A/G 14	ALL DIVS	151.3325	(T16) 192.8	151.3325	(T16) 192.8	A	ALL DIVISIONS
15	TACTICAL	CALCORD	ALL DIVS	156.0750	(T6) 156.7	156.0750	(T6) 156.7	A	MEDICAL
16	EMERGENCY	AIRGUARD	ALL DIVS	168.6250	0.0	168.6250	(T1) 110.9	A	EMERGENCY USE ONLY
17									
18									
19									
20	EMERGENCY	AIRGUARD	ALL DIVS	168.6250	0.0	168.6250	(T1) 110.9	A	EMERGENCY USE ONLY

5. Special Instructions
SITES COMM VAN #916-883-0931 - SITES V2 IS THE CURRENT CLONE

6. Prepared by (Communications Unit Leader): Name: MIKE HEYFRON

ICS 205 - CONTROLLED UNCLASSIFIED INFORMATION//BASIC

NIMS IAP

Signature:  Date/Time: 06/24/24

1630



CAL FIRE INCIDENT MANAGEMENT TEAM #4



Dustin Martin, Incident Commander

FINANCE MESSAGE

- SITES Incident Finance is set up at the Colusa County Fairgrounds in the Festival Hall - **CALNU011083**
- POINT Incident Finance is set up at the Cloverdale Citrus Fairgrounds in the Tea Room - **CALNU010992**
- Shift Tickets need to be completed by Division Group Supervisor and turned in daily.
 - Refer to shift ticket example in IAP.
- Report all damages and injuries to Finance.
- CAL FIRE employees and Hired Equipment Suppliers need to check in with Finance.
- Local Government personnel need to check in with CAL OES.
- Off-site feeding is not approved.
- All resources will be required to complete waterlog in IAP to document water usage. They will need to be turned into Finance daily.



INCIDENT MANAGEMENT TEAM 4

Finance Section - Shift Ticket Examples



24HR LINE RESOURCE - 2 OPERATORS

EMERGENCY SHIFT TICKET and EVALUATION FORM The responsible Government Officer will complete this form each shift.				Contractor Name DIRT PUSHERS LLC	
Incident or Project Name SITES		Incident Number CALNU011083	Request Number E-27	Operator #1 (DAY SHIFT) FIRST & LAST	Operator #2 (NIGHT SHIFT) FIRST & LAST
Agreement Number MEU 0012345678				Operator Furnished By: <input checked="" type="checkbox"/> Contractor <input type="checkbox"/> Government	
Equipment Make 2002 CATERPILLAR		Equipment Model / Type D6N XL, TYPE 2 - E		Operating Supplies Furnished By: <input checked="" type="checkbox"/> Contractor <input type="checkbox"/> Government	
Serial Number COMPLETE SERIAL #		License Number			
Equipment Status <input type="checkbox"/> Inspected <input checked="" type="checkbox"/> Under Agreement <input type="checkbox"/> Released by Government <input type="checkbox"/> Withdrawn by Contractor					
Equipment Use Date Mo / Day Start Stop Work (Circle) Hours Days / Miles Assignment					
6/18	0701	2400	17	17	DIV X
6/19	0001	0700	7	7	DIV X
Vendor Rating Poor* Avg. Good Exc. N/A					
Met Performance Expectations				Govt. Rep. Name and Position - PRINT Print Your Name	
Equipment in Safe Working Condition				Govt. Rep. Signature <i>Your Signature</i>	
Operator Skill Level				Contractor Signature <i>Contractor Signature</i>	
Operates Safely				Date Time 6/19/2024 0700	
Operator's Cooperation Level				CAL FIRE 297 (Rev 3-2011)	
Overall Performance				* NOTE: any rating of POOR requires an explanation in Comment Section. ** Final evaluation or for more documentation, use a CALFIRE Form 230 or equivalent.	

12HR LINE RESOURCE - 1 OPERATOR

EMERGENCY SHIFT TICKET and EVALUATION FORM The responsible Government Officer will complete this form each shift.				Contractor Name TRANSPORTS EXPRESS	
Incident or Project Name SITES		Incident Number CALNU011083	Request Number E-123	Operator #1 (DAY SHIFT) FIRST & LAST	Operator #2
Agreement Number MEU 0012345678				Operator Furnished By: <input checked="" type="checkbox"/> Contractor <input type="checkbox"/> Government	
Equipment Make 1999 PETERBILT 379		Equipment Model / Type TRANSPORT 18 WHEEL		Operating Supplies Furnished By: <input checked="" type="checkbox"/> Contractor <input type="checkbox"/> Government	
Serial Number LAST 8 OR FULL VIN		License Number 12345A1			
Equipment Status <input type="checkbox"/> Inspected <input checked="" type="checkbox"/> Under Agreement <input type="checkbox"/> Released by Government <input type="checkbox"/> Withdrawn by Contractor					
Equipment Use Date Mo / Day Start Stop Work (Circle) Hours Days / Miles Assignment					
4/1	0701	1900	12	12	DIV X
Vendor Rating Poor* Avg. Good Exc. N/A					
Met Performance Expectations				Govt. Rep. Name and Position - PRINT Print Your Name	
Equipment in Safe Working Condition				Govt. Rep. Signature <i>Your Signature</i>	
Operator Skill Level				Contractor Signature <i>Contractor Signature</i>	
Operates Safely				Date Time 4/1/2022 1900	
Operator's Cooperation Level				CAL FIRE 297 (Rev 3-2011)	
Overall Performance				* NOTE: any rating of POOR requires an explanation in Comment Section. ** Final evaluation or for more documentation, use a CALFIRE Form 230 or equivalent.	



PUBLIC INFORMATION SECTION



Sites Fire

Information & Media Line 707-967-4207

Incident Start Date: 6/17/24	Incident Start Time: 1:39 p.m.
Acres:	Containment:
Cause:	Total Personnel:

MEDIA – The California State Penal Code Section 409.5(d) allows the news media to enter scenes of disaster, riot or civil disturbance. Properly identified members of the news media should not be restricted from entering locations specified within the code. However, this does not include crime scenes, private property and does not imply that the news media may interfere with incident operations while they are in the areas of concern. More information can be found [here](#).



SOCIAL MEDIA POLICY – When assigned to a CAL FIRE incident, you will adhere to the CAL FIRE Social Media Policy, Section 0691. You can find further information about the CAL FIRE Social Media Policy [here](#).



PHOTOGRAPHS AND VIDEOS OF INCIDENT – We are in a new era of media. Media no longer means news/broadcast industry, but now refers to anyone that has the capability to shoot video, photographs and post them onto social media sites in a matter of minutes. Unfortunately, we have seen some instances of photographs or videos that have depicted unsafe, unprofessional or embarrassing circumstances which are a serious breach of ethics. When this happens, it reflects poorly on all that are attached to this incident. Posting an inappropriate video, photo or blog comment could expose oneself to unwanted ramifications. It may be unsafe to shoot photos or video and a firefighter who is concentrating on a camera loses their situational awareness.

The Public Information Office would like copies of the video and pictures that you safely took while not in an emergency situation, fire suppression activity or in an overhead assignment. Bring your video and pictures to the Public Information trailer; they will be reviewed and possibly uploaded to our many CAL FIRE social media sites. Remember, we don't want photographs or videos that depict unsafe, unprofessional or embarrassing circumstances, which are a serious breach of ethics.

LOST AND FOUND – The Information Section will manage lost and found items for the incident.

MAIL SERVICE – The Information Section can assist you with sending and receiving mail.

Colusa County Fairgrounds
 ATTN: _____
 (Your Name and Resource)
 1303 10th Street, Colusa, CA 95932

SITES FIRE
SUPPRESSION REPAIR PLAN 6/20/2024
Sonoma Lake Napa Unit
Incident # CA-LNU-011083

GENERAL SUPPRESSION REPAIR POLICY

Suppression damage is defined as adverse impacts to resources caused by our firefighting efforts. The authority to complete suppression repair work lies with the Public Resources Code (PRC), including PRC 4170 and 4170.5, PRC 4675, and PRC 4676(a, b). Policy derived from the statutes is provided in the CAL FIRE Handbook. This policy and authority provide for repairs necessary to prevent further resource damage.

Mitigations described within this plan have been developed to apply to constructed fire lines, watercourse crossings, access roads, drop points, Heli-spots and any other locations disturbed by fire suppression activities. These mitigations are intended to be used to reduce the overall effects that may occur downslope. Of particular concern are potential water quality impacts, damage to private roads, and cultural resources. The intent is to utilize resources presently assigned to the incident for repair with operators that have knowledge of activities that occurred during control operations. A Suppression Repair Group Supervisor will be assigned to ensure that work is done as required and according to the Fire Suppression Repair plan. Additional specialists may be used if the need arises. These general standards will be applied except where site-specific needs are identified, and alternative repair actions are developed and agreed upon.

OBJECTIVES:

- **Minimize surface and gully erosion.**
- **Minimize sediment delivery to stream channels.**
- **Restore conditions to pre-fire drainage patterns.**
- **Limit off road vehicle access on hand and dozer lines where possible with dirt berm or existing obstructions.**

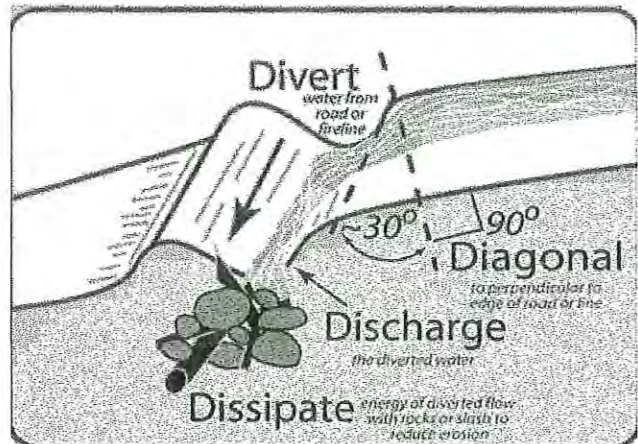
GENERAL GUIDELINES

Dozer lines

- Pull back berms, brush and rocks spreading over the width to the break.
- Install and construct water bars on lines steeper than 10%, as per the following, or as directed by the Suppression Repair team:

WATER BAR OR CROSS DRAIN SPACING				
Fireline or Road Gradient (%)	0-10%	11-25%	26-50%	>50%
Spacing	200'	150'	100'	75'

*All waterbars should be installed diagonally with a minimum cut of 6" into existing grade, and minimum height of 12" from the bottom of the trench to backfill top. Waterbars shall be installed at all approaches to watercourse crossings. Waterbars shall be constructed to allow for drainage at the discharge end into non-erodible material and into the green where feasible. All waterbars to be constructed at 30 degrees, angled downhill.



Roads

- Clean culverts plugged with soil and debris resulting from fire control activities.
- Breach/remove berms to facilitate drainage.
- Water roads as directed by Suppression Repair Specialist.

Infrastructure

- Repair gates and fences damaged by fire control activities. Repairs will be conducted in consultation with landowners.
- Other infrastructure, such as water pipes, will be evaluated and repaired as agreed upon and in consultation with the landowner.

Camps, Staging, Helispots/Helibases and Drop Points

- Restore sites to pre-fire conditions to the best extent possible.
- Remove all flagging, garbage, litter, and unneeded equipment.
- Comply with all conditions of any Land Use Agreement.

Watercourses

- All watercourse issues shall be reported to the Suppression Repair Group Supervisor immediately, before any work may begin.
- All slash, soil, and debris deposited into watercourses resulting from fire suppression activities shall be removed and stabilized.
- All loose soil must be pulled away from the watercourse and stabilized.

Concentrations of Slash

- On areas that cannot be adequately waterbarred, or as an option to waterbarring, slash may be spread to cover the soil to minimize erosion.
- Branches and logs should be placed at contour and spread out as much as possible.
- Piles created by suppression operations within 150 feet of permanent structures, public roads or private roads will be lopped and scattered within 18 inches of the soil surface.

Archaeological or Historic Sites (if discovered)

- All potential sites shall be avoided.
- Impacted sites will be reported to the Fire Suppression Repair Group Supervisor or Suppression Repair Coordinator.
- If sites are encroached upon, work will stop immediately; **if there is no threat of fire spread**, and the Fire Suppression Repair Group Supervisor shall be notified.

Comp Claims Issues:

- Damaged resources that are too large or complex for the Fireline Suppression Group to handle shall be turned over to Comp Claims for processing. Examples of such issues include damage to pavement, bridges, pipelines, etc.

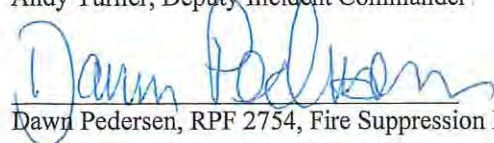
Additional Specific Concerns

- Continue evaluation of additional fire suppression repair needs
- Specifications above may change if deemed necessary by Fire Suppression Repair Specialists to ensure resource management goals are met.

Approved by:



Andy Turner, Deputy Incident Commander



Dawn Pedersen, RPF 2754, Fire Suppression Repair Supervisor

TRAINING SPECIALIST MESSAGE

A Training Specialist is available for trainees on the incident.

All State, Federal and local government agency Trainees working on Position Task Books will need to register with the Incident Training Specialist in order to receive proper credit for your assignment.

Training Specialist's

Dennis Martin

(707) 479-8421



Register using the QR Code

TRAINING SPECIALIST MESSAGE

The Training Specialist has left the incident.

IF you have not closed out with the Training Specialist, please scan the QR code, fill in and submit.



Your completed packet will be emailed back to you

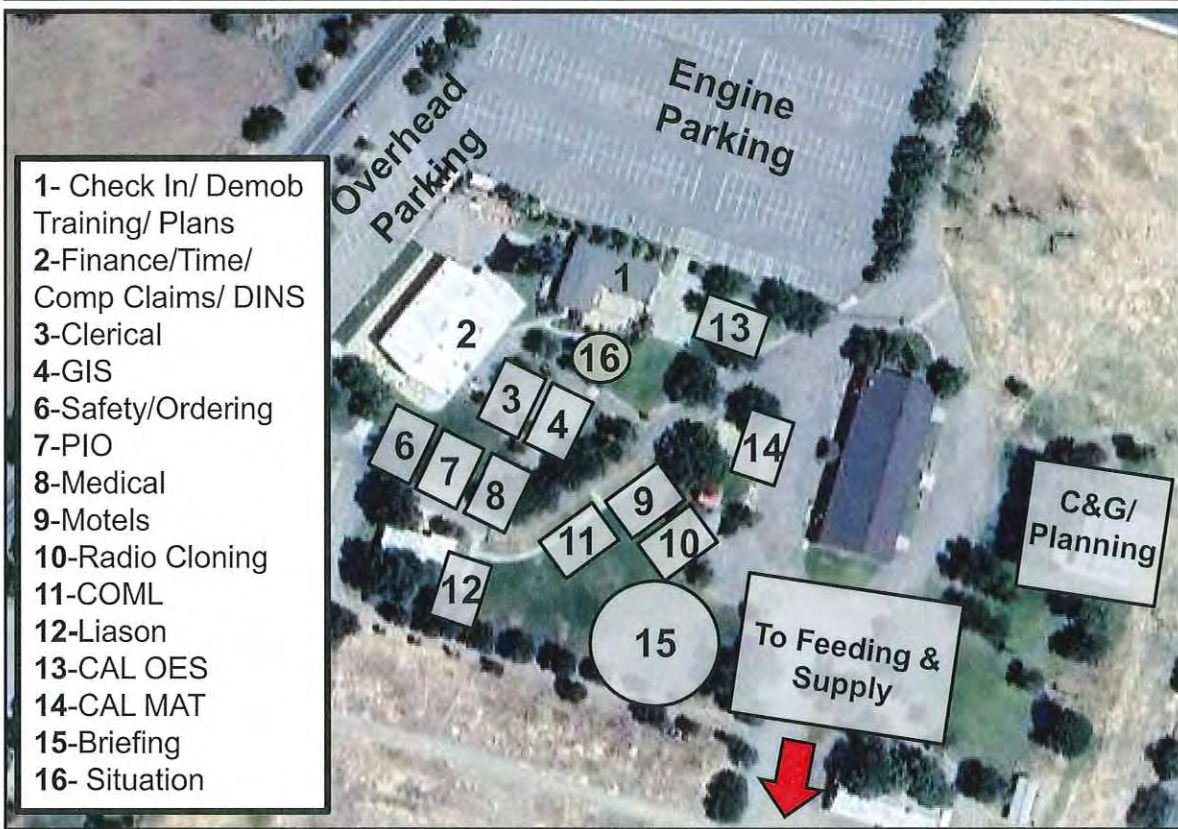
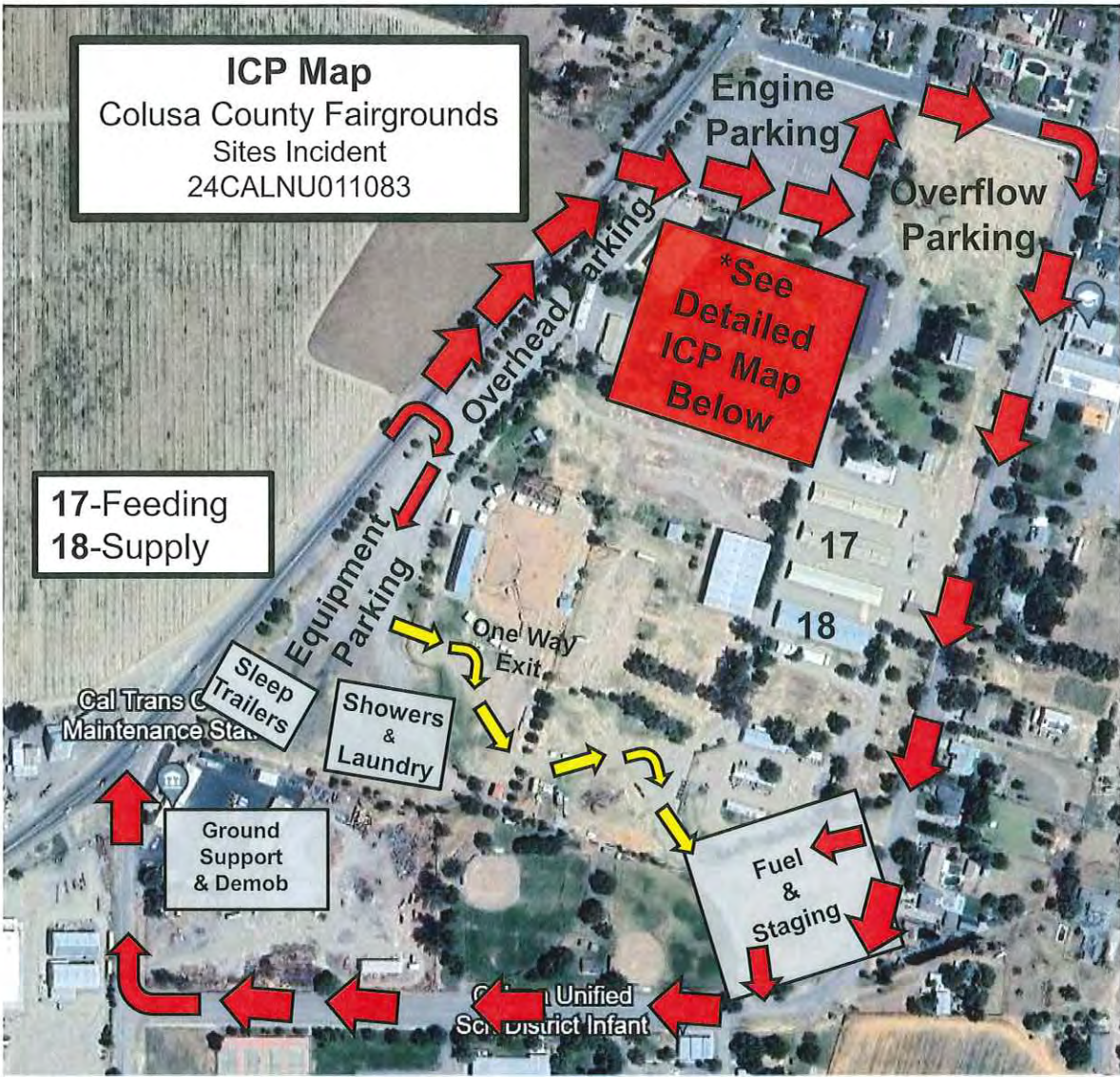
If you have any questions or concerns, please feel free to contact me.

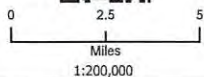
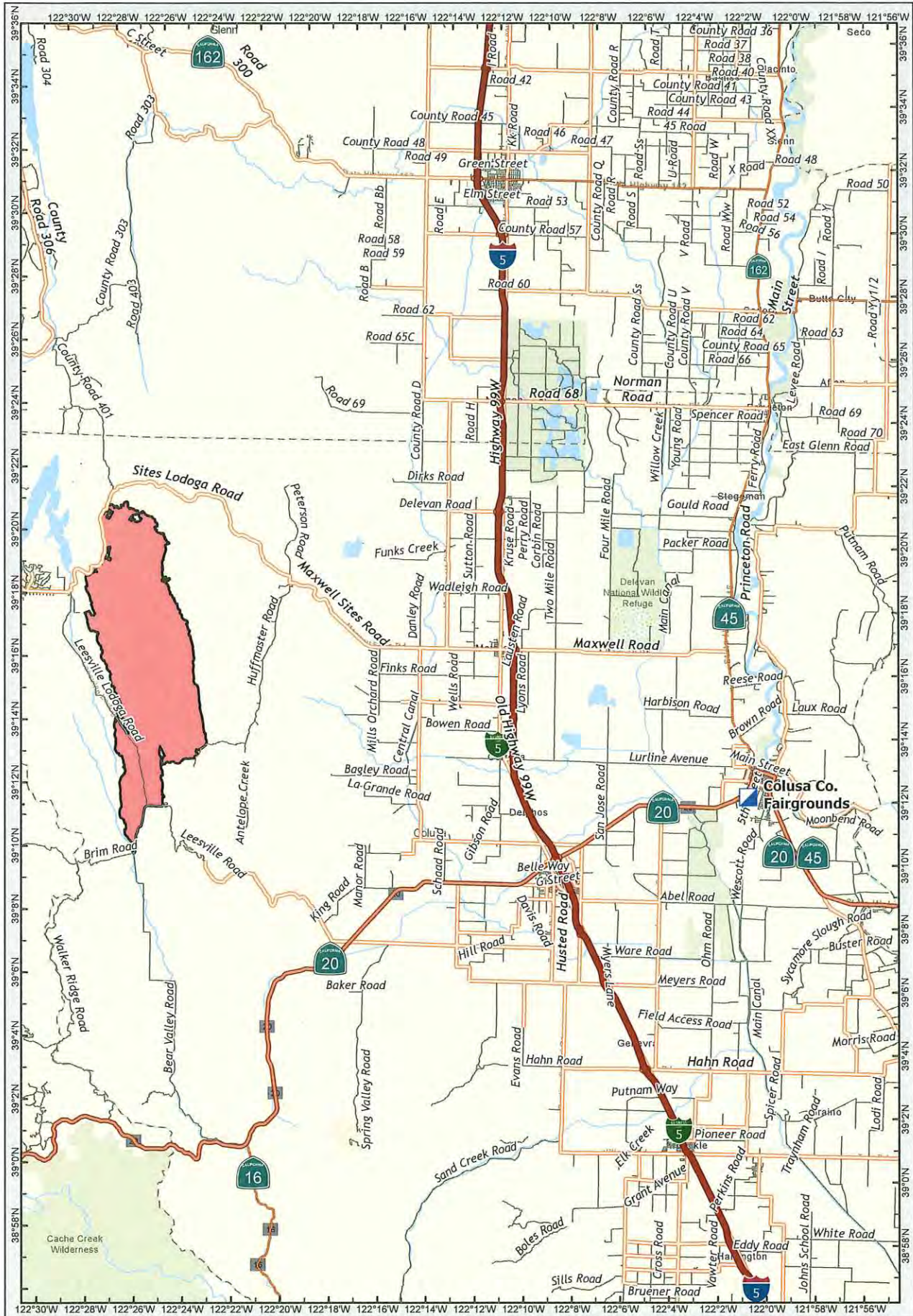
Training Specialist

Dennis Martin

(707) 479-8421

martinhazmat@gmail.com





- Highway
- Ramp
- trunk
- Primary
- Secondary; Tertiary
- Minor Road
- Sites Incident

TRANSPORTATION
 Sites Incident
 CA-LNU-011083
 June 2024



This page left intentionally blank

