



Day Incident
CA-LMU-003472
August 5, 2014

IAP
Index
Map

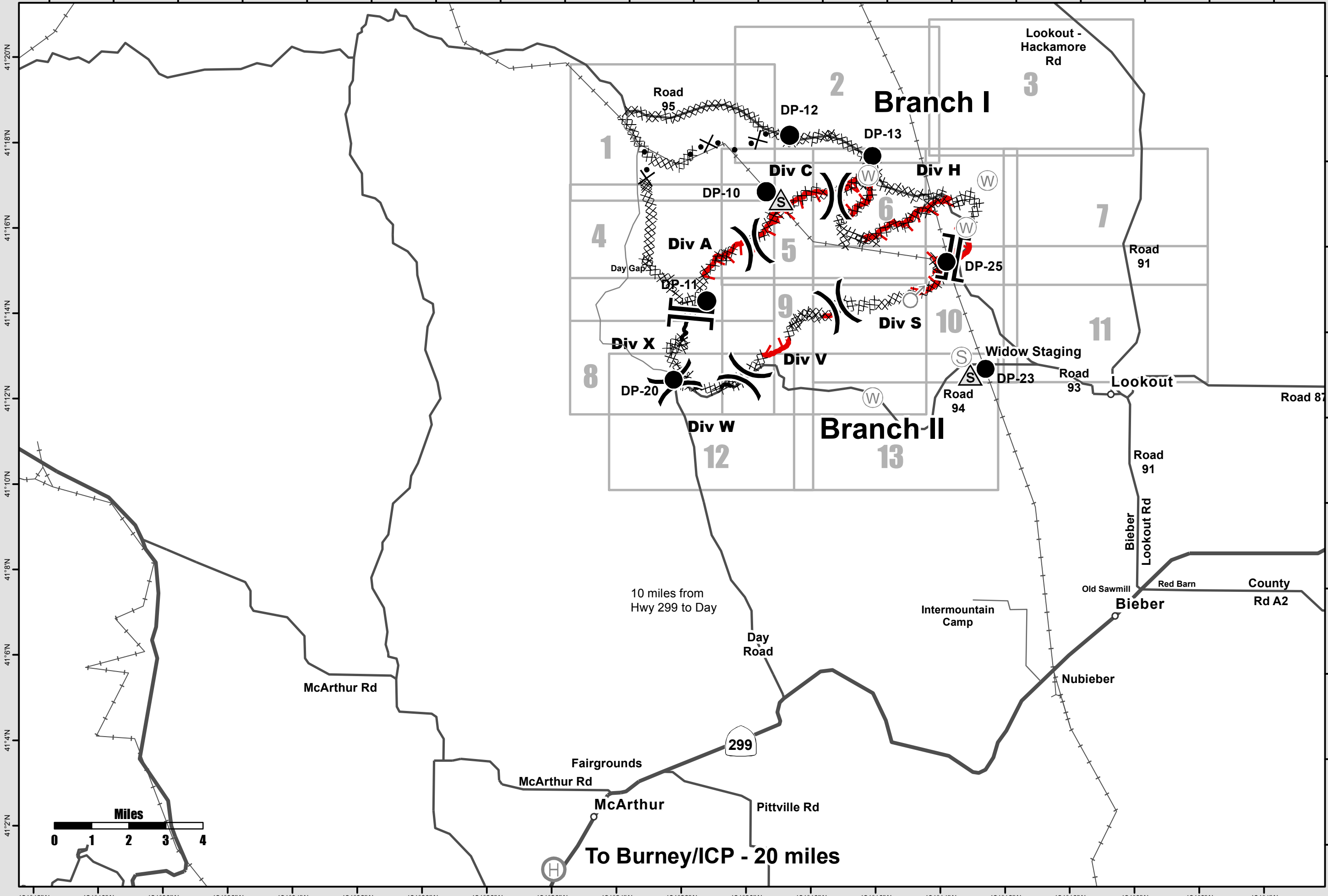
- Division
- Branch
- Drop Point
- Safety Zone
- Staging Area
- Water Source
- Helibase
- Spot Fire
- Uncontrolled Fire Edge
- Completed Line
- Completed Dozer Line
- Proposed Dozer Line
- Railroads



1:150,000

Team 3 GIS
NAD 83

121°42'W 121°40'W 121°38'W 121°36'W 121°34'W 121°32'W 121°30'W 121°28'W 121°26'W 121°24'W 121°22'W 121°20'W 121°18'W 121°16'W 121°14'W 121°12'W 121°10'W 121°8'W 121°6'W 121°4'W



121°42'W 121°40'W 121°38'W 121°36'W 121°34'W 121°32'W 121°30'W 121°28'W 121°26'W 121°24'W 121°22'W 121°20'W 121°18'W 121°16'W 121°14'W 121°12'W 121°10'W 121°8'W 121°6'W 121°4'W

41°20'N
41°18'N
41°16'N
41°14'N
41°12'N
41°10'N
41°8'N
41°6'N
41°4'N
41°2'N

41°20'N
41°18'N
41°16'N
41°14'N
41°12'N
41°10'N
41°8'N
41°6'N
41°4'N
41°2'N



Day Incident
CA-LMU-003472
August 5, 2014

IAP Map

Page 1

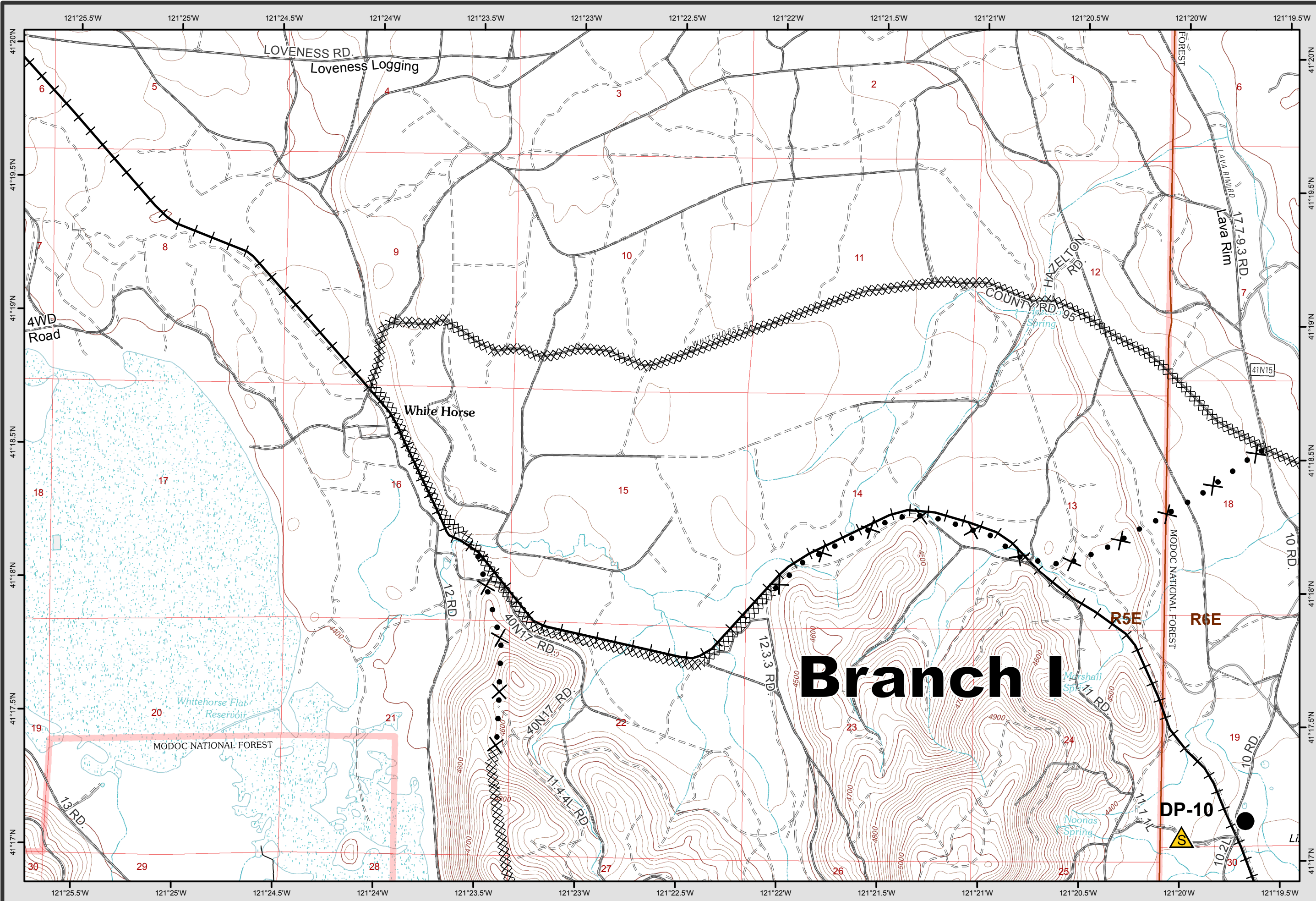


- Division
- Branch
- Drop Point
- Safety Zone
- Staging Area
- Water Source
- Spot Fire
- Uncontrolled Fire Edge
- Completed Line
- Completed Dozer Line
- Proposed Dozer Line
- Railroads



1:24,000

Team 3 GIS
NAD 83





Day Incident
CA-LMU-003472
August 5, 2014

IAP
Map

Page 2

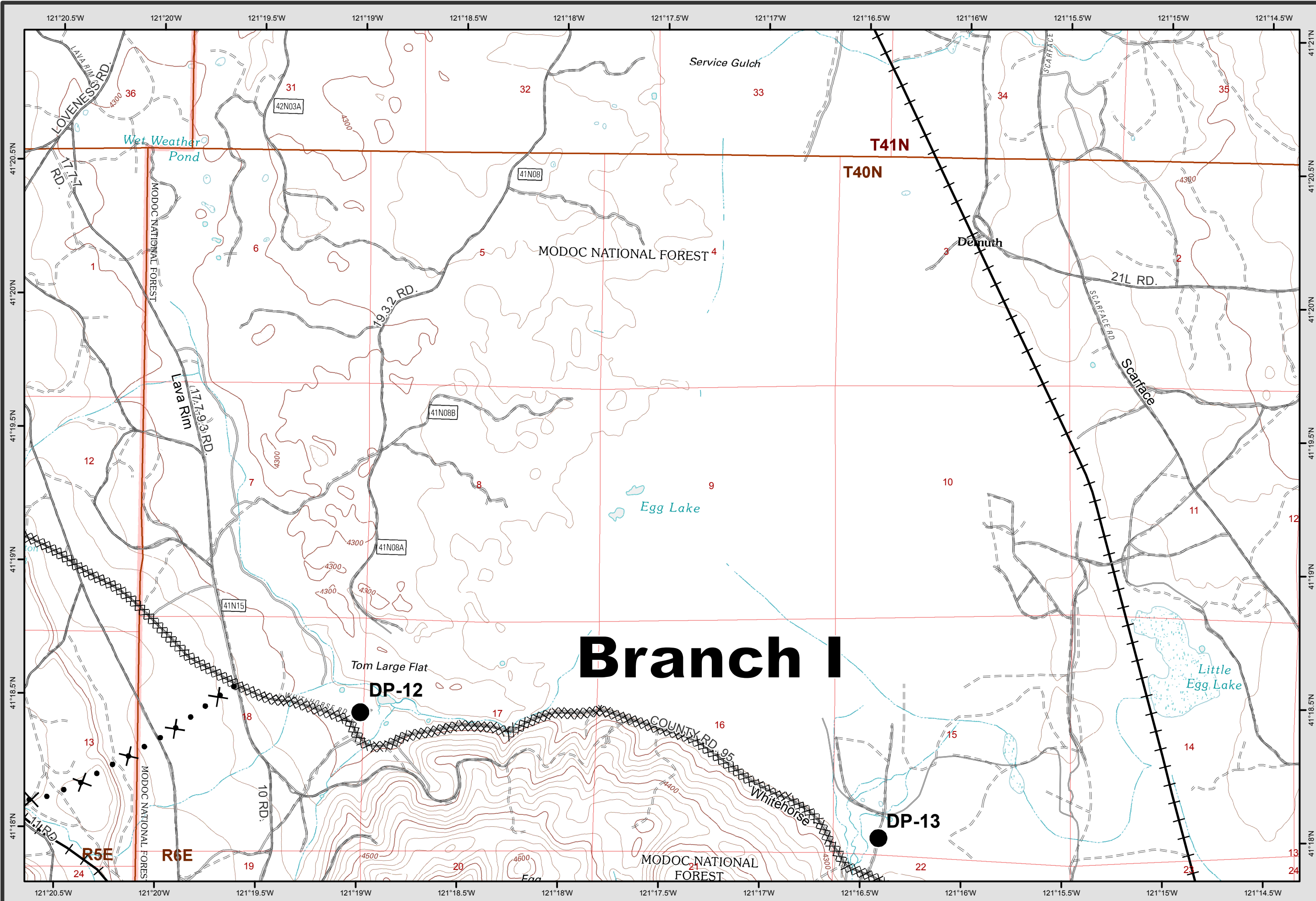


- Division
- Branch
- Drop Point
- Safety Zone
- Staging Area
- Water Source
- Spot Fire
- Uncontrolled Fire Edge
- Completed Line
- Completed Dozer Line
- Proposed Dozer Line
- Railroads



1:24,000

Team 3 GIS
NAD 83





Day Incident
CA-LMU-003472
August 5, 2014

IAP
Map

Page 3

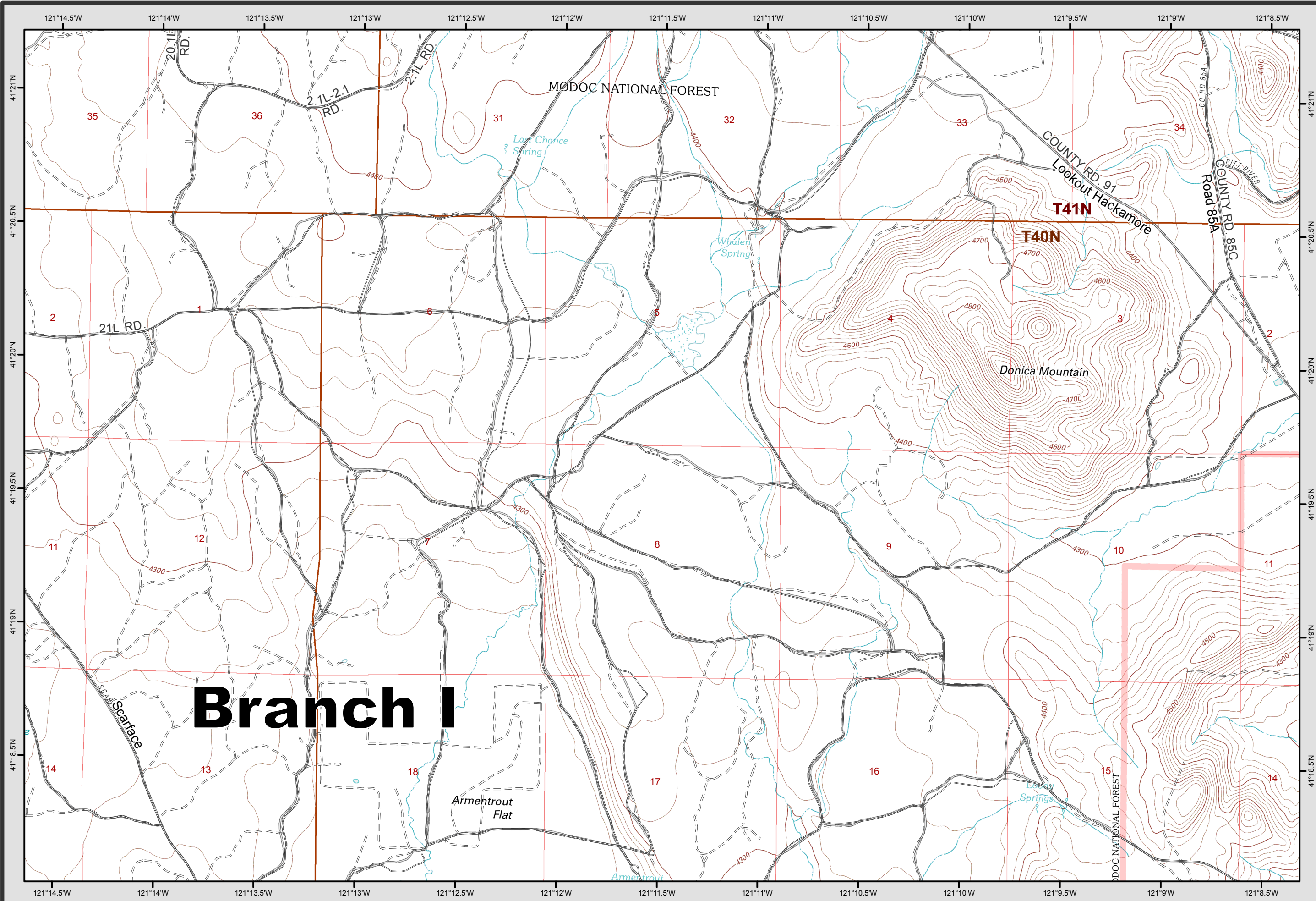


- Division
- Branch
- Drop Point
- Safety Zone
- Staging Area
- Water Source
- Spot Fire
- Uncontrolled Fire Edge
- Completed Line
- Completed Dozer Line
- Proposed Dozer Line
- Railroads



1:24,000

Team 3 GIS
NAD 83

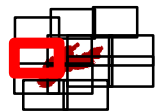




Day Incident
CA-LMU-003472
August 5, 2014

IAP
Map

Page 4

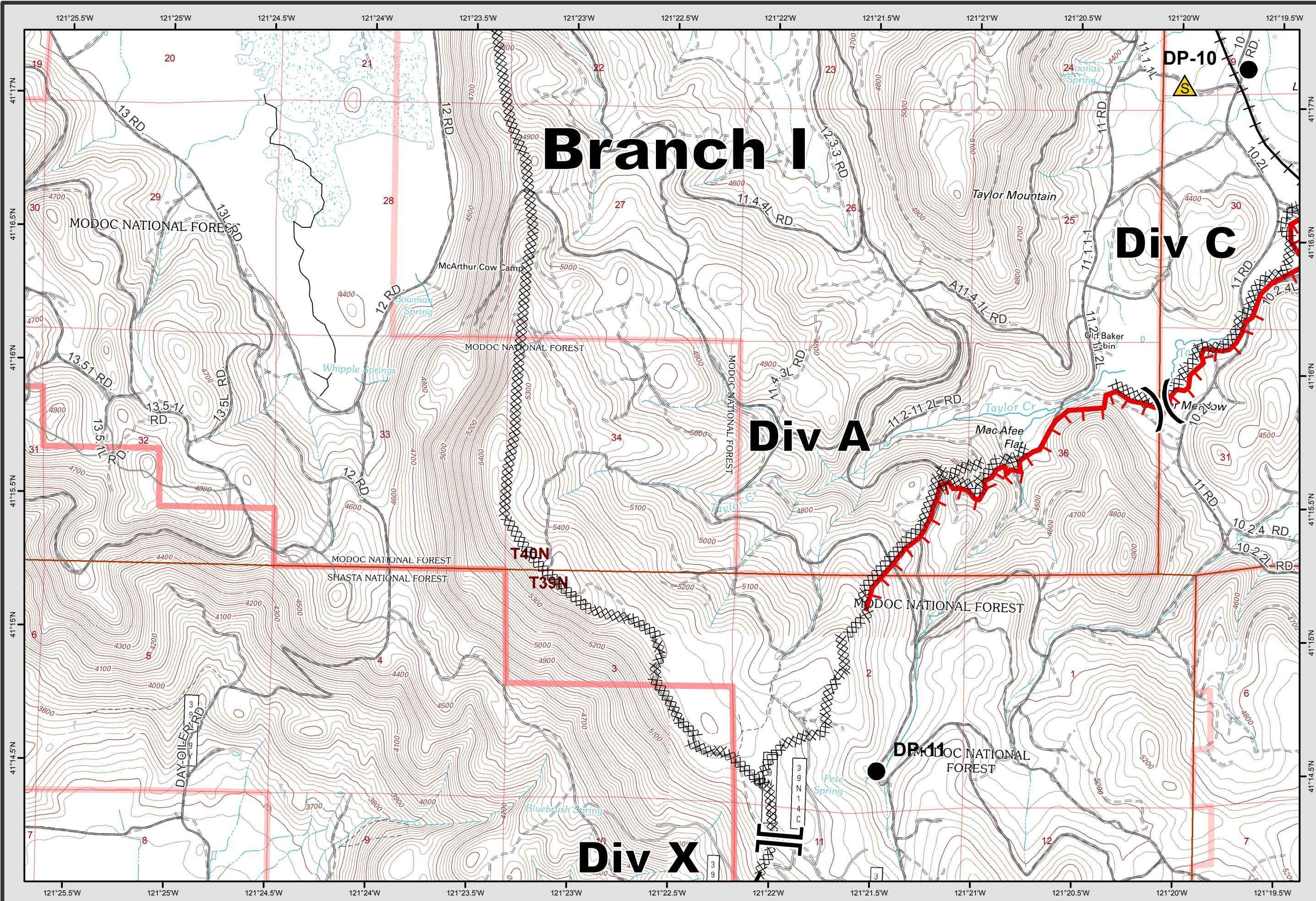


- Division
- Branch
- Drop Point
- Safety Zone
- Staging Area
- Water Source
- Spot Fire
- Uncontrolled Fire Edge
- Completed Line
- Completed Dozer Line
- Proposed Dozer Line
- Railroads



1:24,000

Team 3 GIS
NAD 83

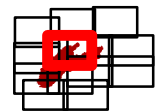




Day Incident
CA-LMU-003472
August 5, 2014

IAP
Map

Page 5

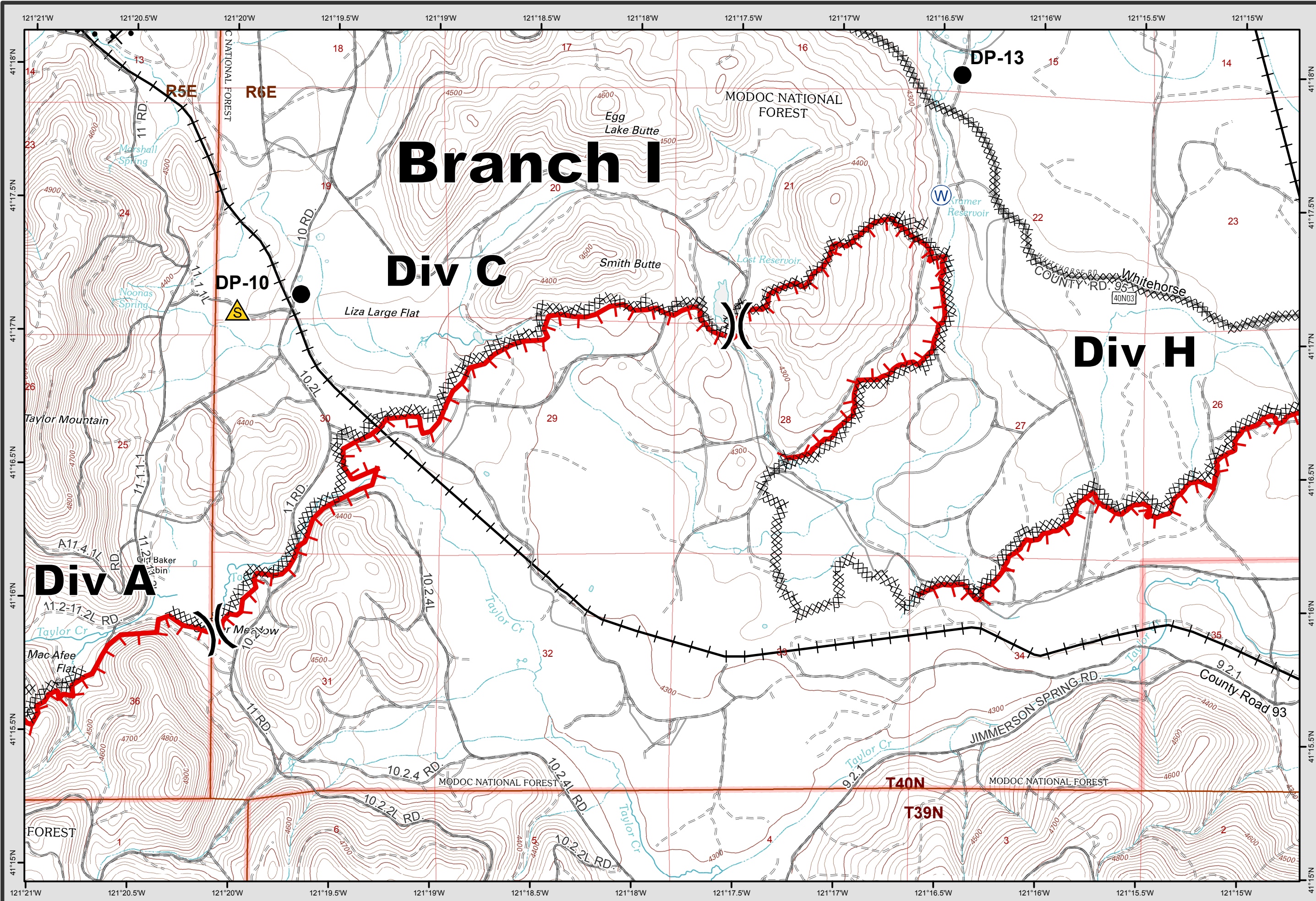


- Division
- Branch
- Drop Point
- Safety Zone
- Staging Area
- Water Source
- Spot Fire
- Uncontrolled Fire Edge
- Completed Line
- Completed Dozer Line
- Proposed Dozer Line
- Railroads



1:24,000

Team 3 GIS
NAD 83





Day Incident
CA-LMU-003472
August 5, 2014

IAP
Map

Page 6

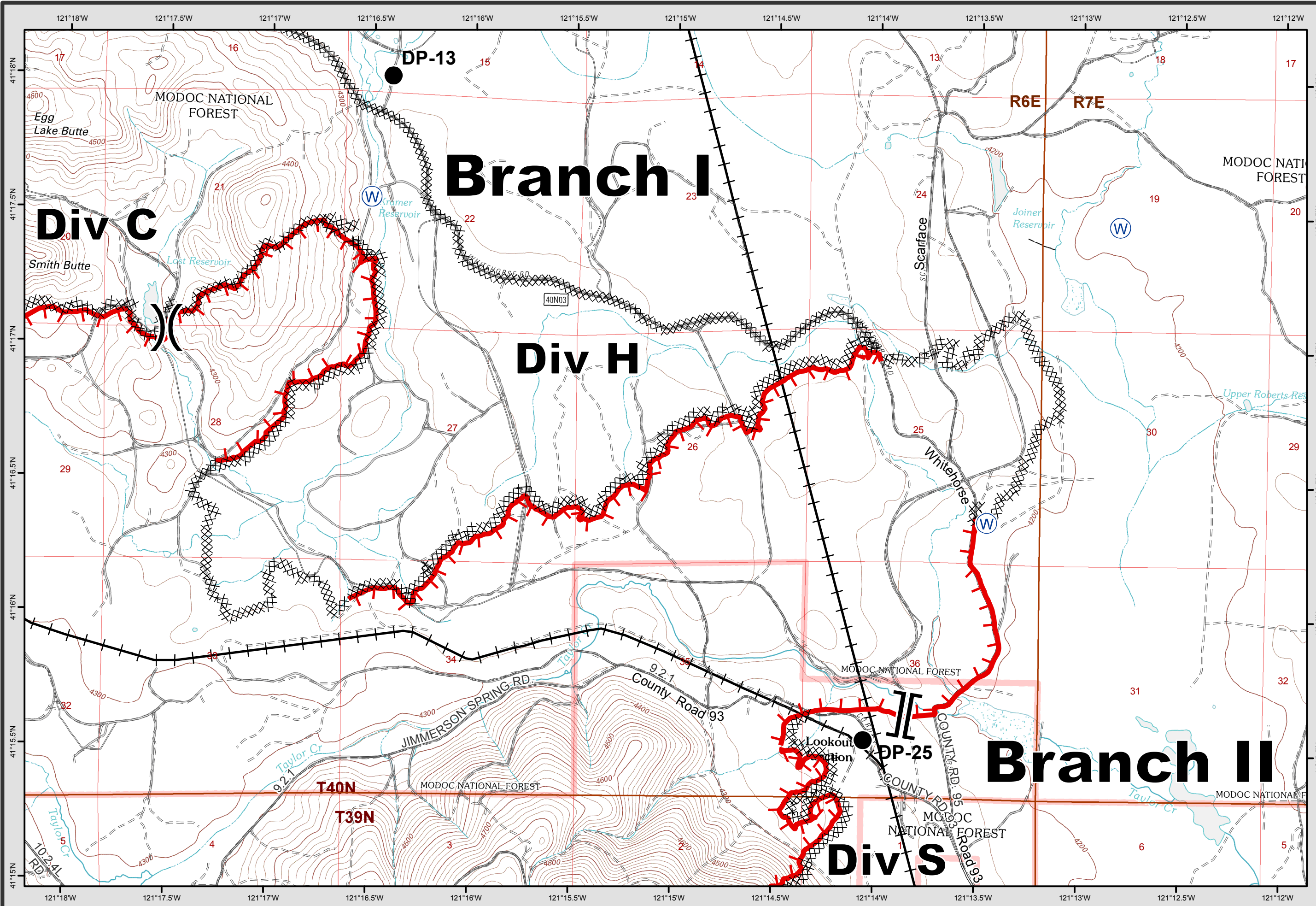


- Division
- Branch
- Drop Point
- Safety Zone
- Staging Area
- Water Source
- Spot Fire
- Uncontrolled Fire Edge
- Completed Line
- Completed Dozer Line
- Proposed Dozer Line
- Railroads



1:24,000

Team 3 GIS
NAD 83

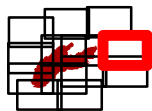




Day Incident
CA-LMU-003472
August 5, 2014

IAP
Map

Page 7

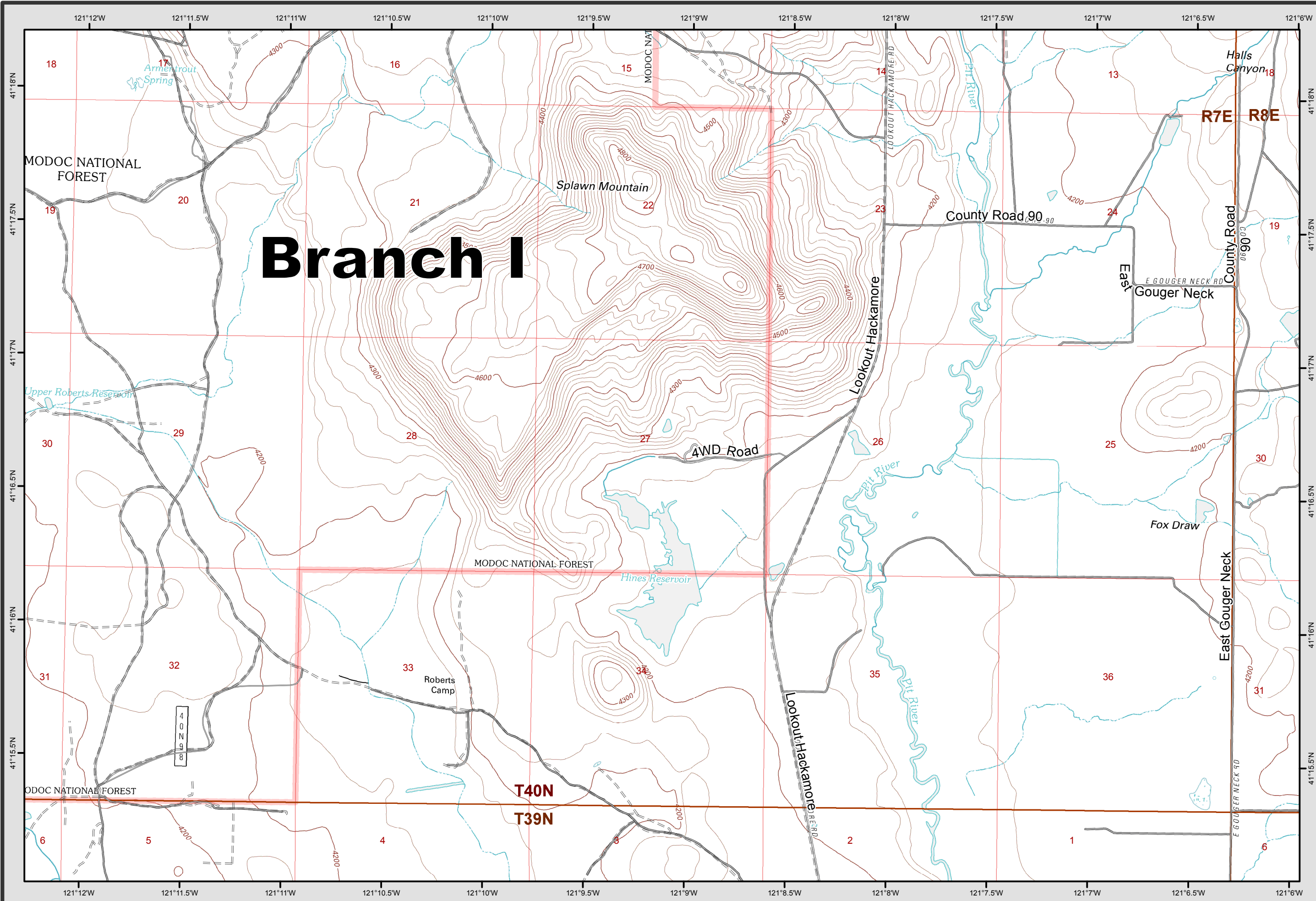


- Division
- Branch
- Drop Point
- Safety Zone
- Staging Area
- Water Source
- Spot Fire
- Uncontrolled Fire Edge
- Completed Line
- Completed Dozer Line
- Proposed Dozer Line
- Railroads



1:24,000

Team 3 GIS
NAD 83

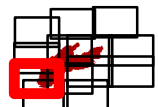




Day Incident
CA-LMU-003472
August 5, 2014

IAP
Map

Page 8

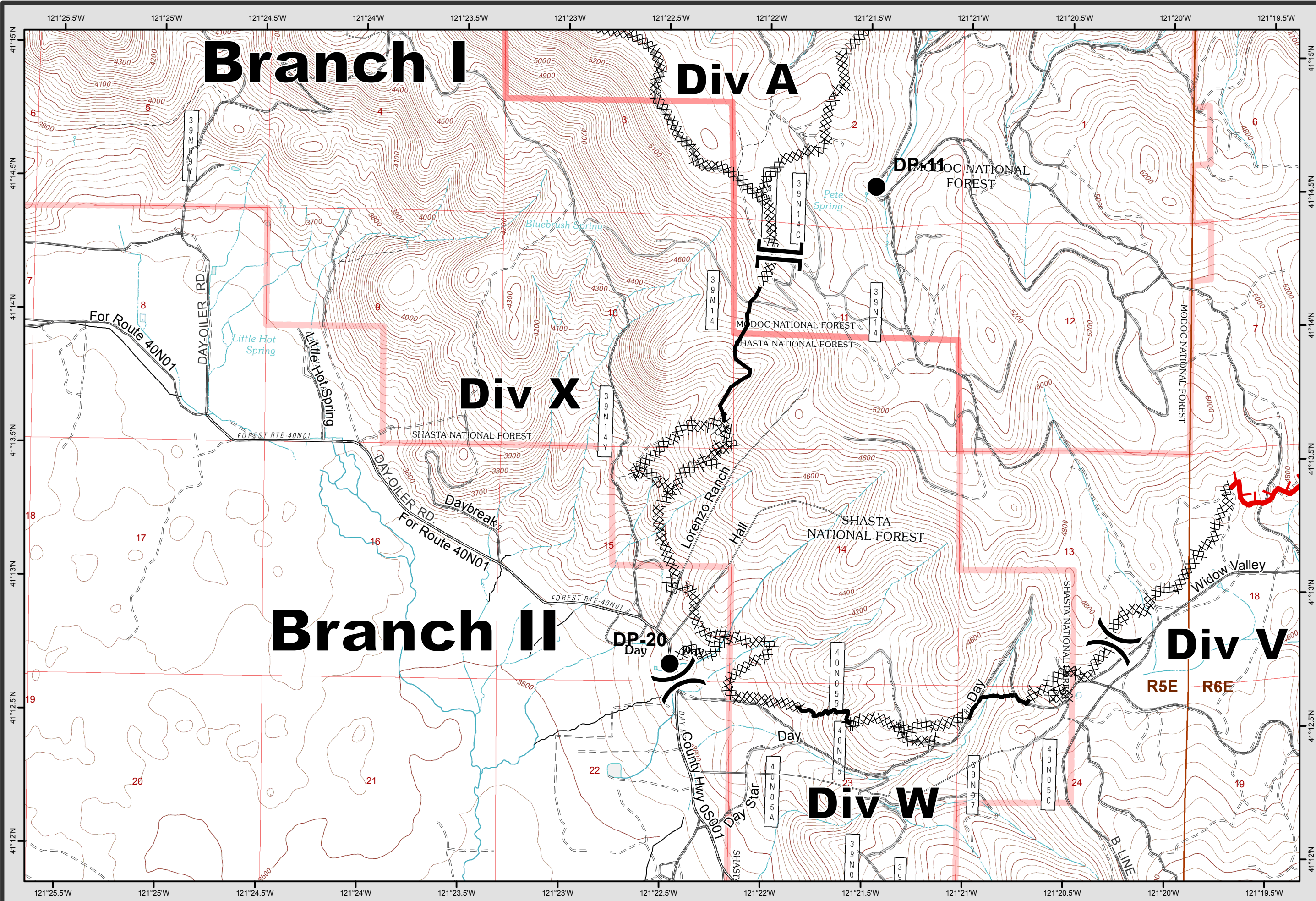


- Division
- Branch
- Drop Point
- Safety Zone
- Staging Area
- Water Source
- Spot Fire
- Uncontrolled Fire Edge
- Completed Line
- Completed Dozer Line
- Proposed Dozer Line
- Railroads



1:24,000

Team 3 GIS
NAD 83

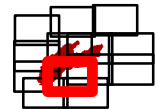




Day Incident
CA-LMU-003472
August 5, 2014

IAP
Map

Page 9

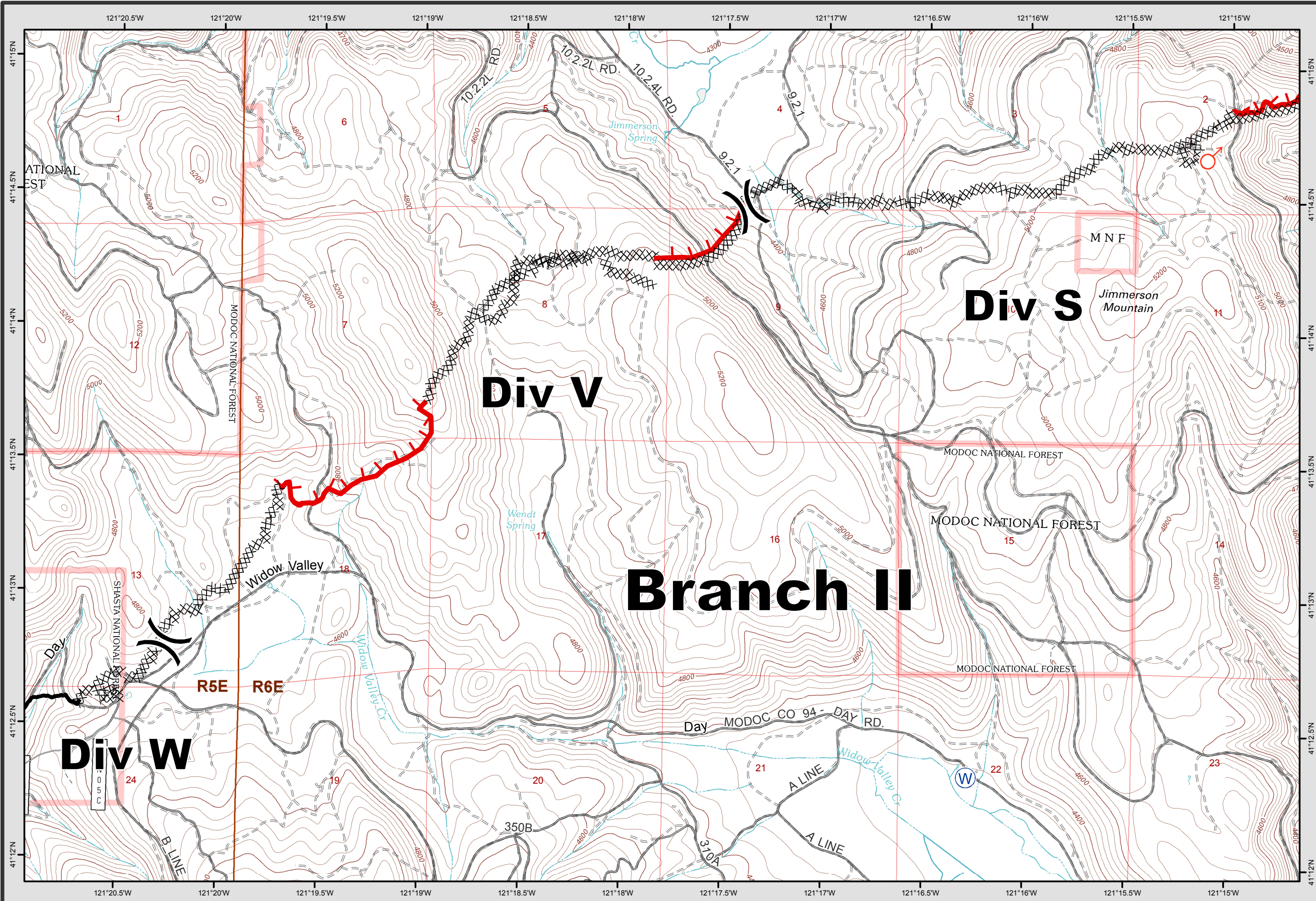


- Division
- Branch
- Drop Point
- Safety Zone
- Staging Area
- Water Source
- Spot Fire
- Uncontrolled Fire Edge
- Completed Line
- Completed Dozer Line
- Proposed Dozer Line
- Railroads



1:24,000

Team 3 GIS
NAD 83

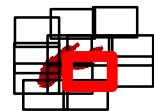




Day Incident
CA-LMU-003472
August 5, 2014

IAP
Map

Page 10

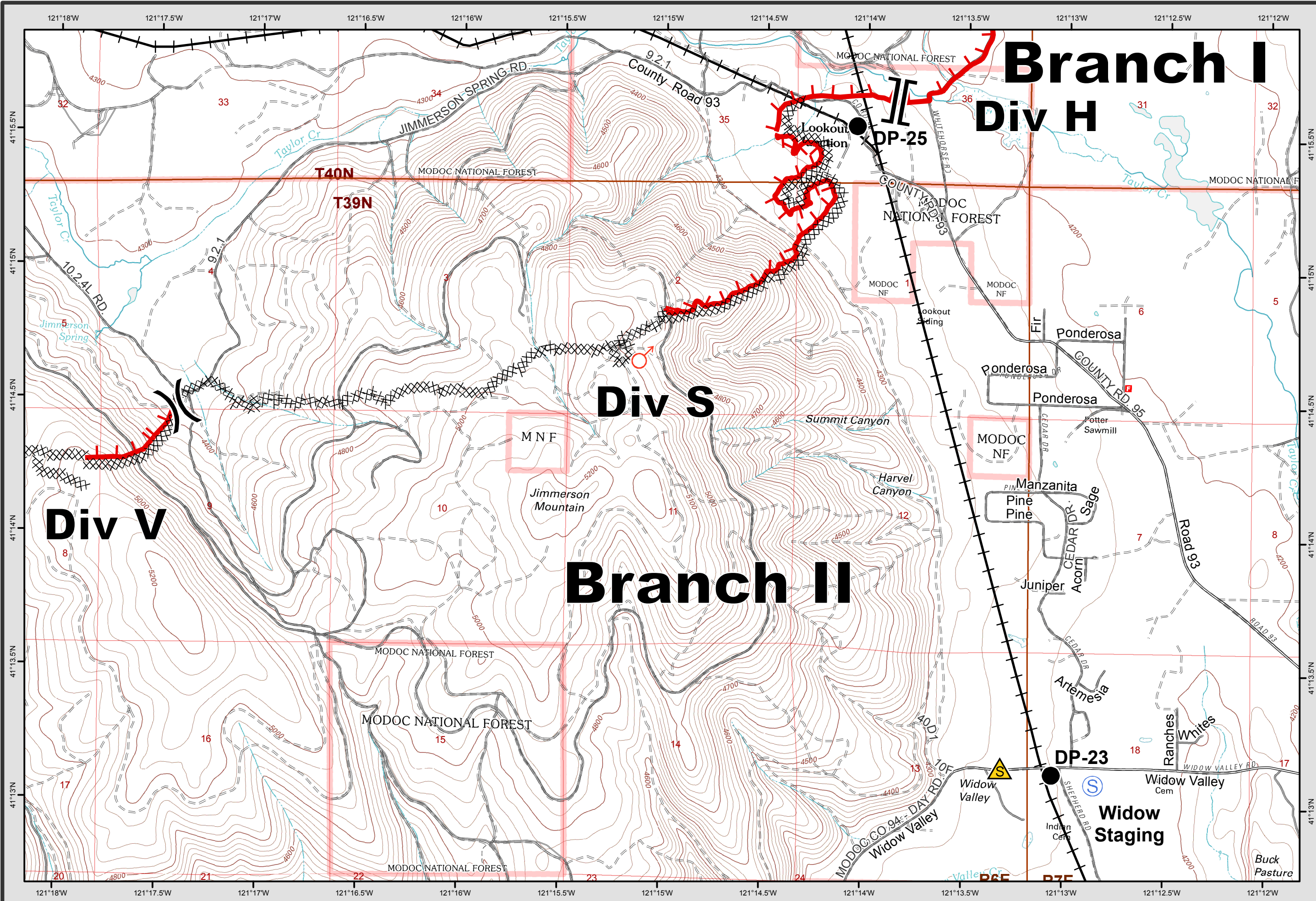


- Division
- Branch
- Drop Point
- Safety Zone
- Staging Area
- Water Source
- Spot Fire
- Uncontrolled Fire Edge
- Completed Line
- Completed Dozer Line
- Proposed Dozer Line
- Railroads



1:24,000

Team 3 GIS
NAD 83

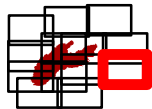




Day Incident
CA-LMU-003472
August 5, 2014

IAP
Map

Page 11

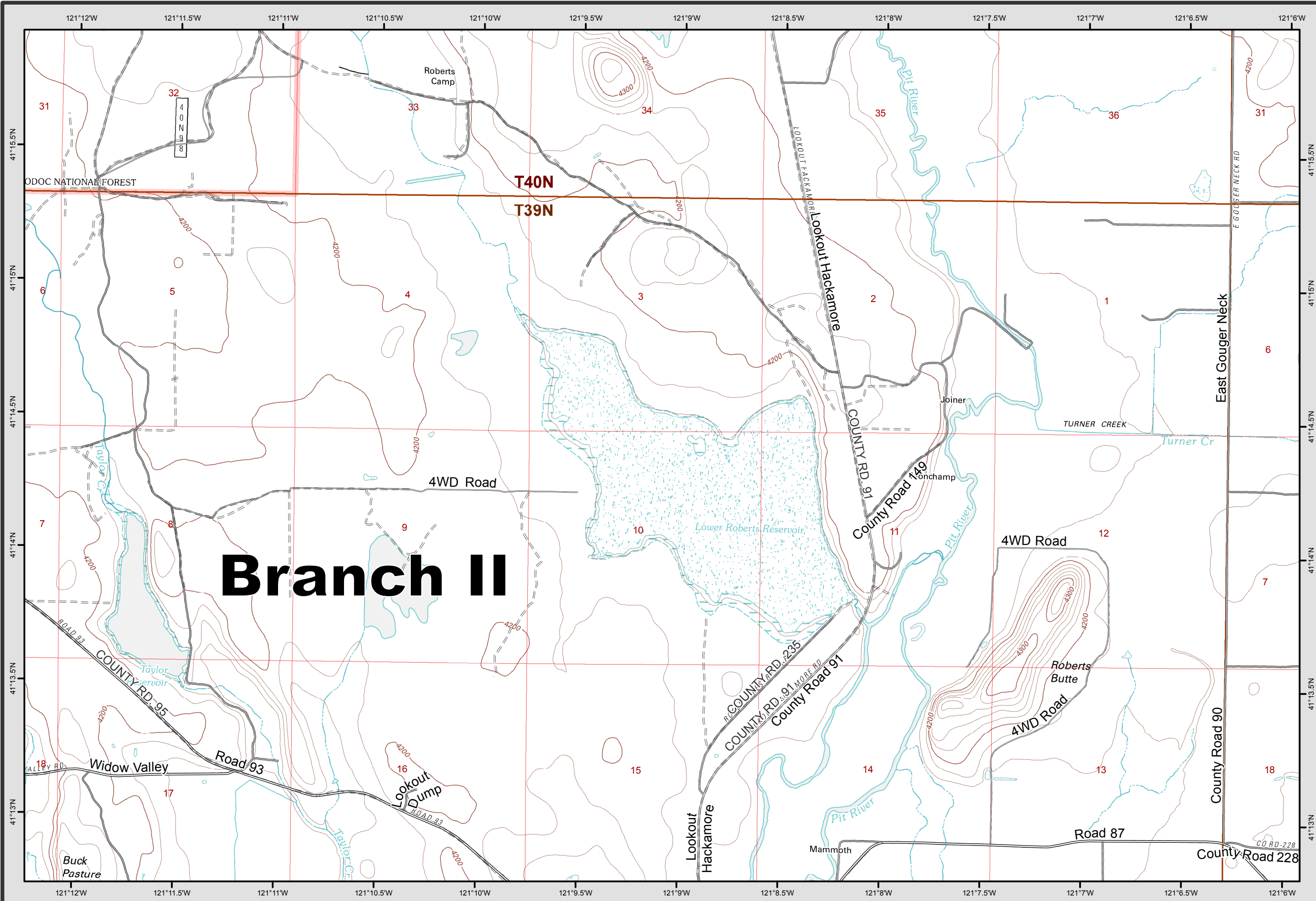


- Division
- Branch
- Drop Point
- Safety Zone
- Staging Area
- Water Source
- Spot Fire
- Uncontrolled Fire Edge
- Completed Line
- Completed Dozer Line
- Proposed Dozer Line
- Railroads



1:24,000

Team 3 GIS
NAD 83





Day Incident
CA-LMU-003472
August 5, 2014

IAP
Map

Page 12

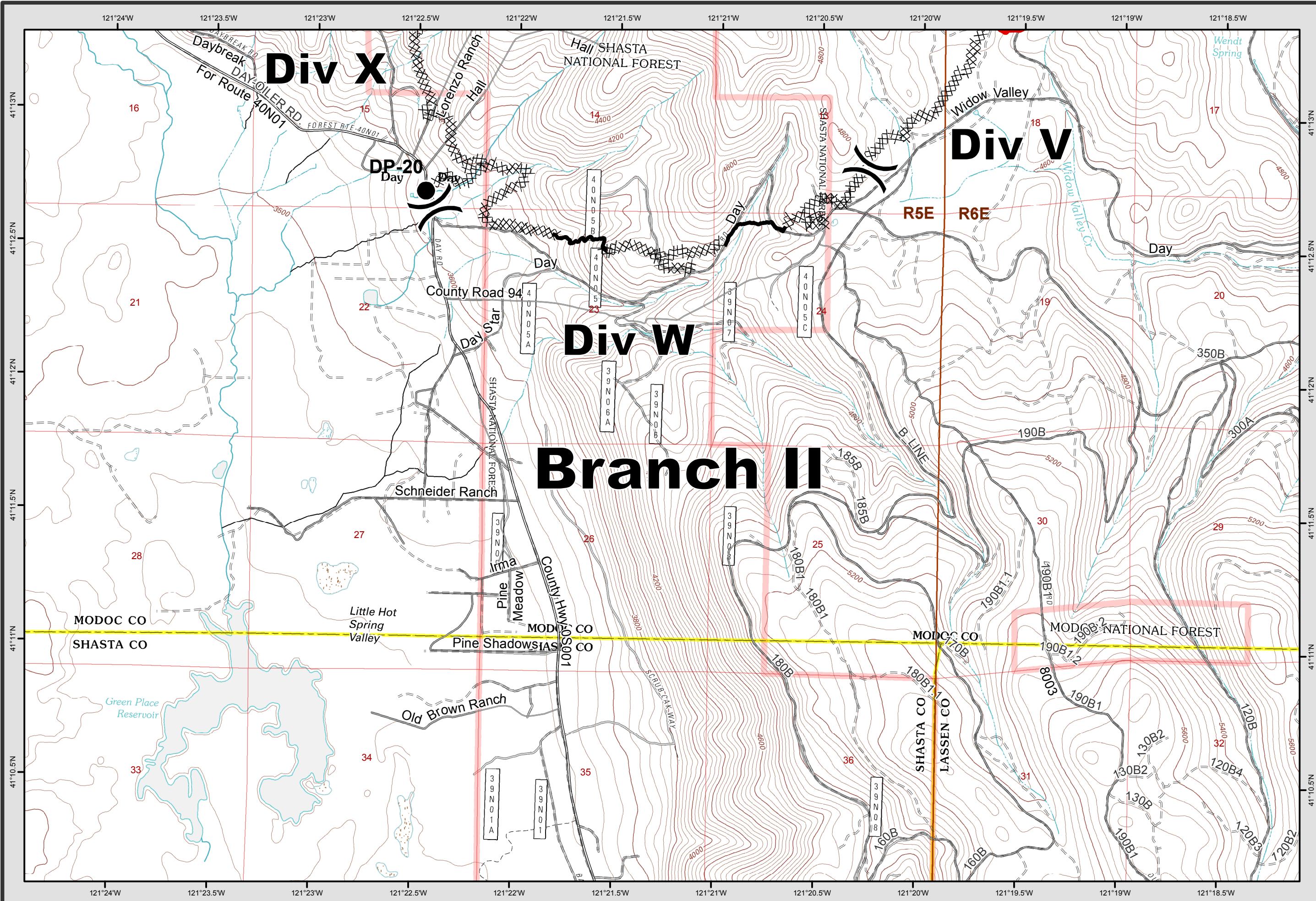


- Division
- Branch
- Drop Point
- Safety Zone
- Staging Area
- Water Source
- Spot Fire
- Uncontrolled Fire Edge
- Completed Line
- Completed Dozer Line
- Proposed Dozer Line
- Railroads



1:24,000

Team 3 GIS
NAD 83

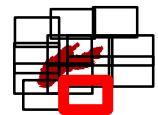




Day Incident
CA-LMU-003472
August 5, 2014

IAP
Map

Page 13



- () Division
- || Branch
- Drop Point
- ▲ Safety Zone
- Ⓢ Staging Area
- Ⓜ Water Source
- ⊙ Spot Fire
- Uncontrolled Fire Edge
- Completed Line
- XXXX Completed Dozer Line
- ⊗ Proposed Dozer Line
- Railroads



1:24,000

Team 3 GIS
NAD 83

