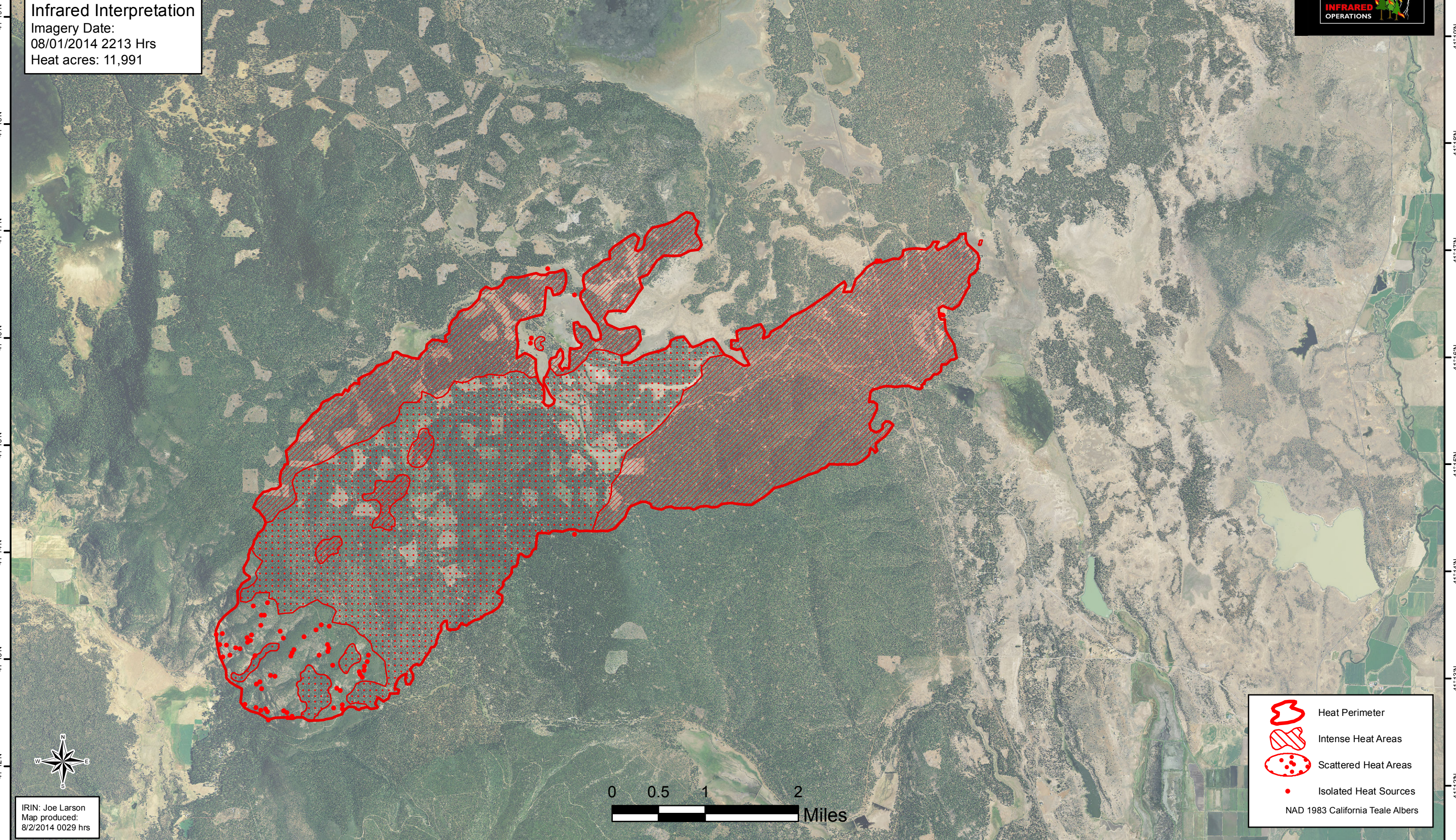


121°25'W 121°24'W 121°23'W 121°22'W 121°21'W 121°20'W 121°19'W 121°18'W 121°17'W 121°16'W 121°15'W 121°14'W 121°13'W 121°12'W 121°11'W 121°10'W 121°9'W 121°8'W

**3-7 Day Fire**  
**CA-LMU-3472**  
**Infrared Interpretation**  
Imagery Date:  
08/01/2014 2213 Hrs  
Heat acres: 11,991







41°19'N  
41°18'N  
41°17'N  
41°16'N  
41°15'N  
41°14'N  
41°13'N  
41°12'N

41°19'N  
41°18'N  
41°17'N  
41°16'N  
41°15'N  
41°14'N  
41°13'N  
41°12'N



IRIN: Joe Larson  
Map produced:  
8/2/2014 0029 hrs



-  Heat Perimeter
-  Intense Heat Areas
-  Scattered Heat Areas
-  Isolated Heat Sources

NAD 1983 California Teale Albers

121°24'W 121°23'W 121°22'W 121°21'W 121°20'W 121°19'W 121°18'W 121°17'W 121°16'W 121°15'W 121°14'W 121°13'W 121°12'W 121°11'W 121°10'W 121°9'W 121°8'W