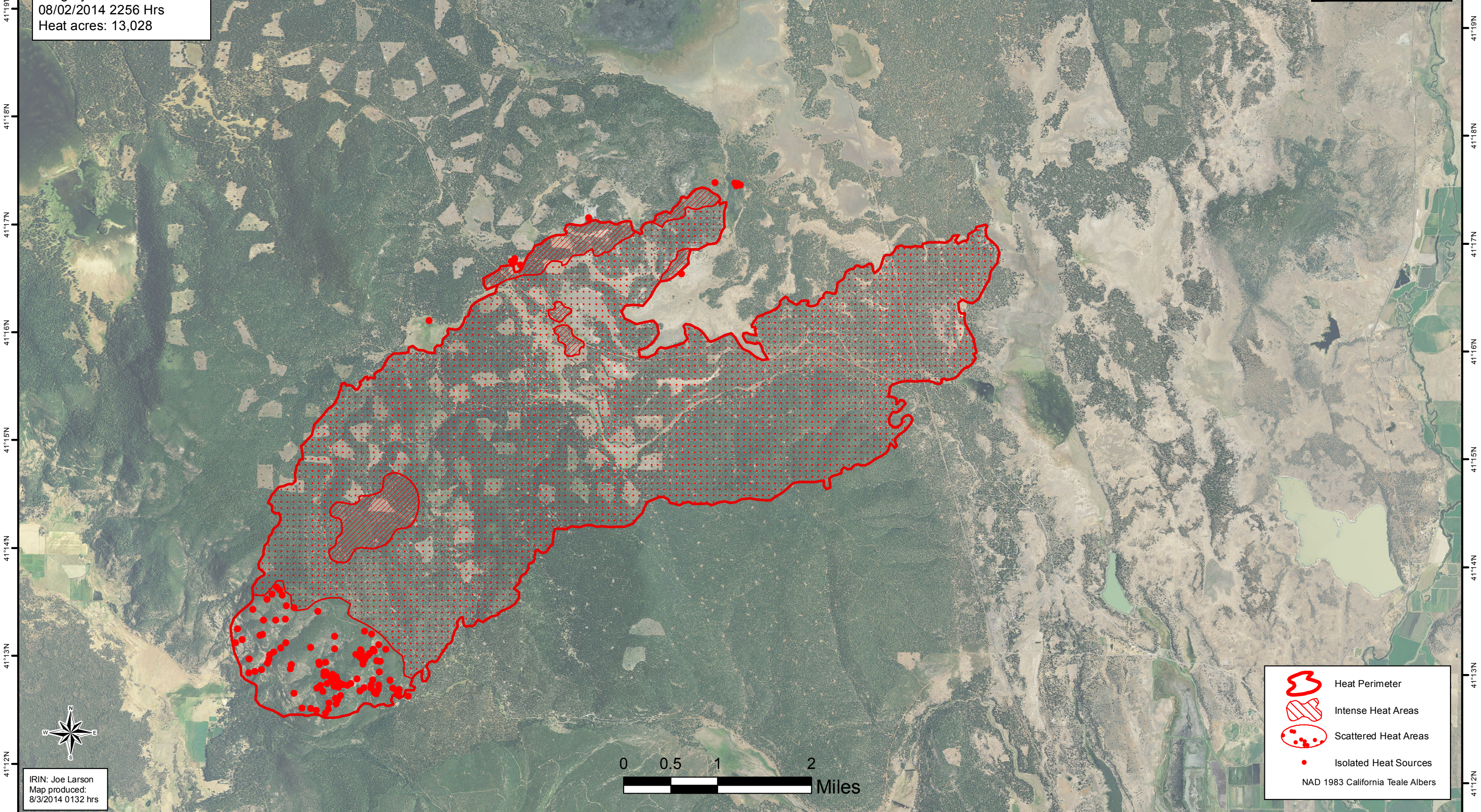


121°25'W 121°24'W 121°23'W 121°22'W 121°21'W 121°20'W 121°19'W 121°18'W 121°17'W 121°16'W 121°15'W 121°14'W 121°13'W 121°12'W 121°11'W 121°10'W 121°9'W 121°8'W

Day Fire
CA-LMU-3472
Infrared Interpretation
Imagery Date:
08/02/2014 2256 Hrs
Heat acres: 13,028







41°19'N
41°18'N
41°17'N
41°16'N
41°15'N
41°14'N
41°13'N
41°12'N

41°20'N
41°19'N
41°18'N
41°17'N
41°16'N
41°15'N
41°14'N
41°13'N
41°12'N



IRIN: Joe Larson
Map produced:
8/3/2014 0132 hrs



-  Heat Perimeter
-  Intense Heat Areas
-  Scattered Heat Areas
-  Isolated Heat Sources

NAD 1983 California Teale Albers

121°25'W 121°24'W 121°23'W 121°22'W 121°21'W 121°20'W 121°19'W 121°18'W 121°17'W 121°16'W 121°15'W 121°14'W 121°13'W 121°12'W 121°11'W 121°10'W 121°9'W 121°8'W