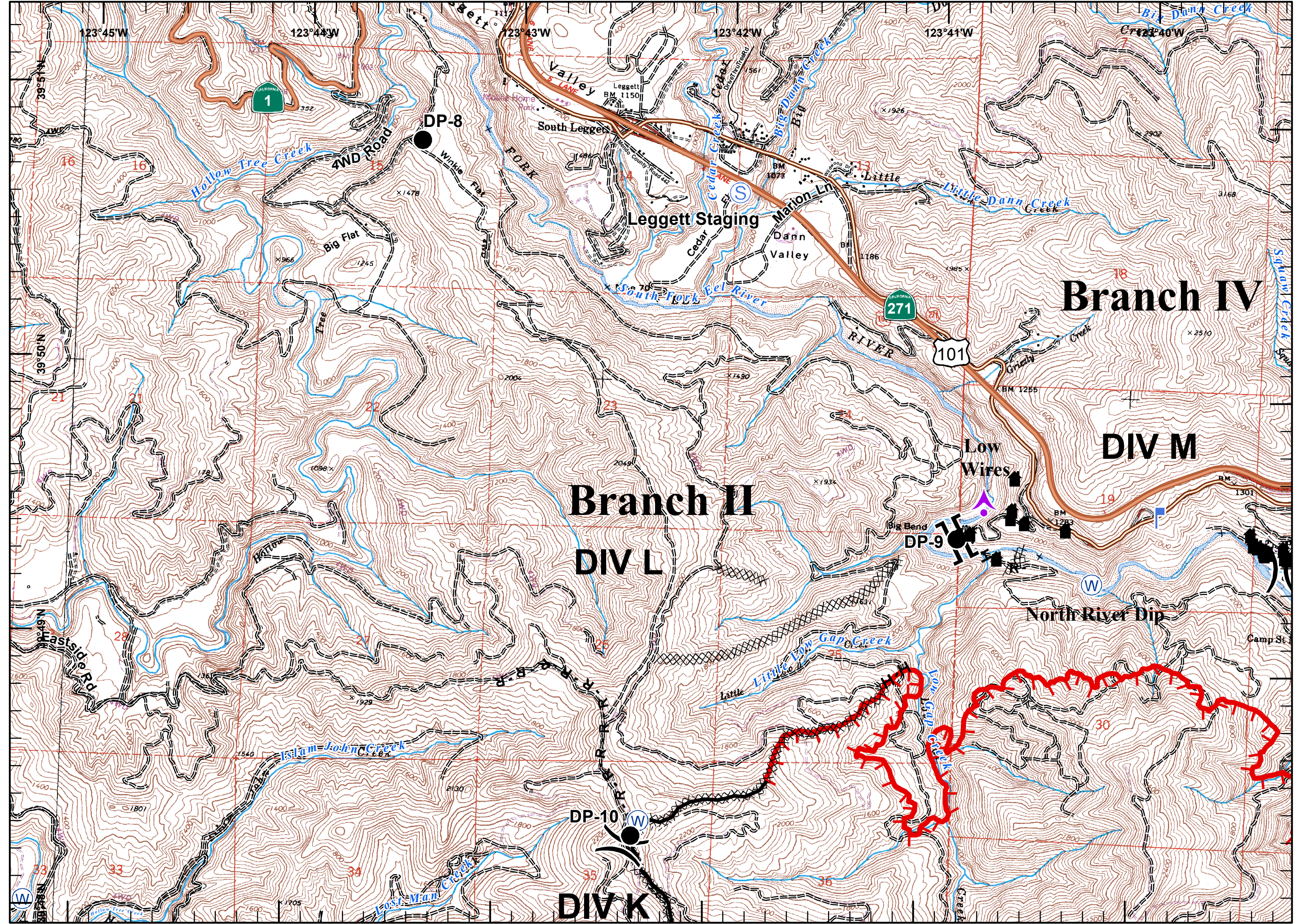
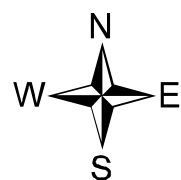



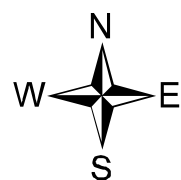


- Branch
- Division
- Aerial Hazard
- Drop Point
- Helispot
- Lookout
- Spot Fire
- Staging Area
- Repeater
- Water Source
- Helibase
- Bridge
- Safety Zone
- Structure
- Structure/Outbuilding
- Retardant Mud Dip
- Mobile Weather Station
- Incident Command Post
- Uncontrolled Fire Edge
- Completed Dozer Line
- Proposed Dozer Line
- Planned Fire Line
- Road as Fire Line
- Completed Line
- Hand Line

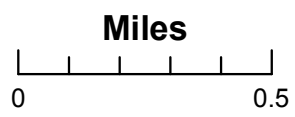




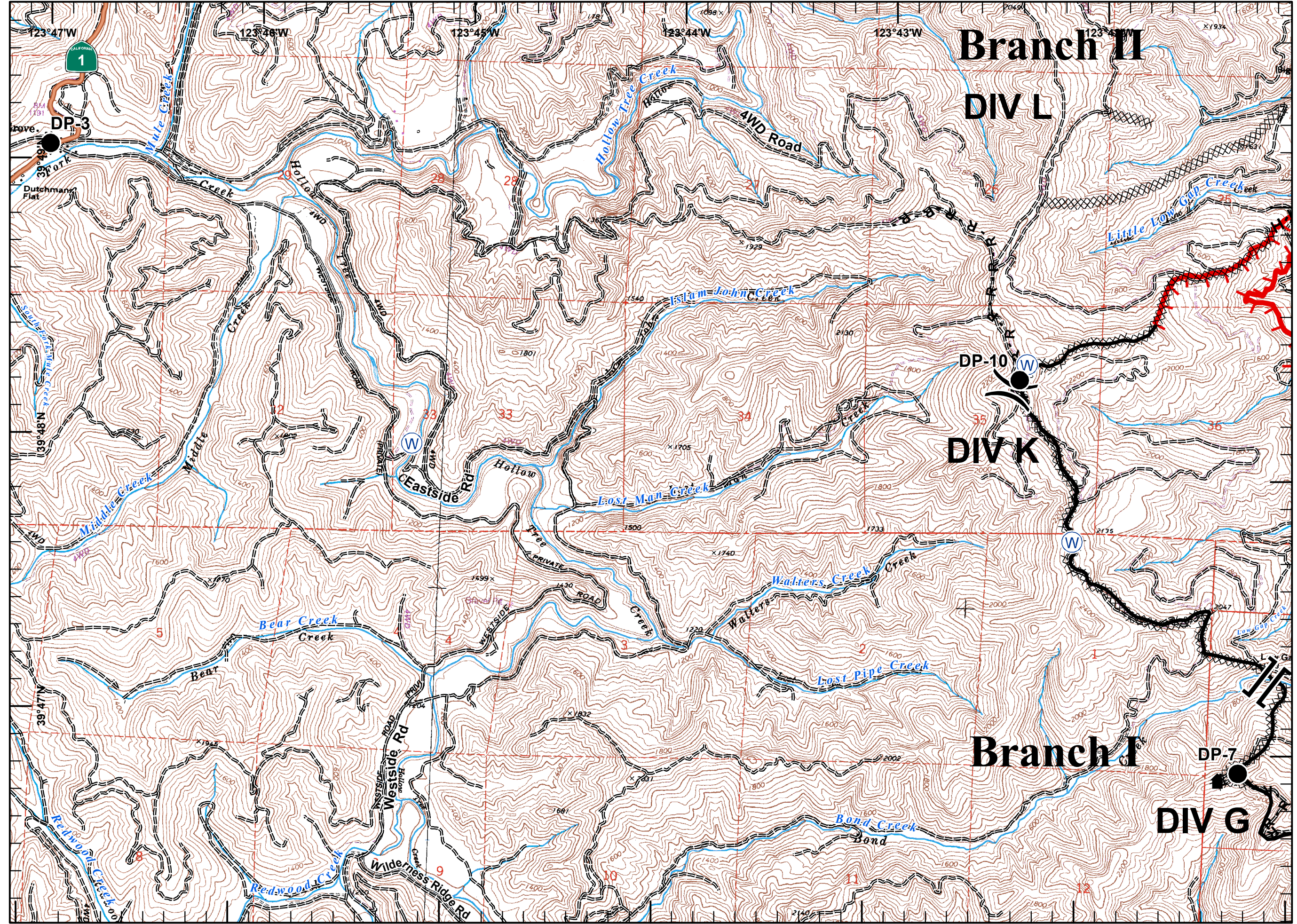
- Branch
- Division
- Aerial Hazard
- Drop Point
- Helispot
- Lookout
- Spot Fire
- Staging Area
- Repeater
- Water Source
- Helibase
- Bridge
- Safety Zone
- Structure
- Structure/Outbuilding
- Retardant Mud Dip
- Mobile Weather Station
- Incident Command Post
- Uncontrolled Fire Edge
- Completed Dozer Line
- Proposed Dozer Line
- Planned Fire Line
- Road as Fire Line
- Completed Line
- Hand Line

Miles


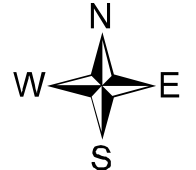


Hidalgo
 8/12/2014 21:31hrs



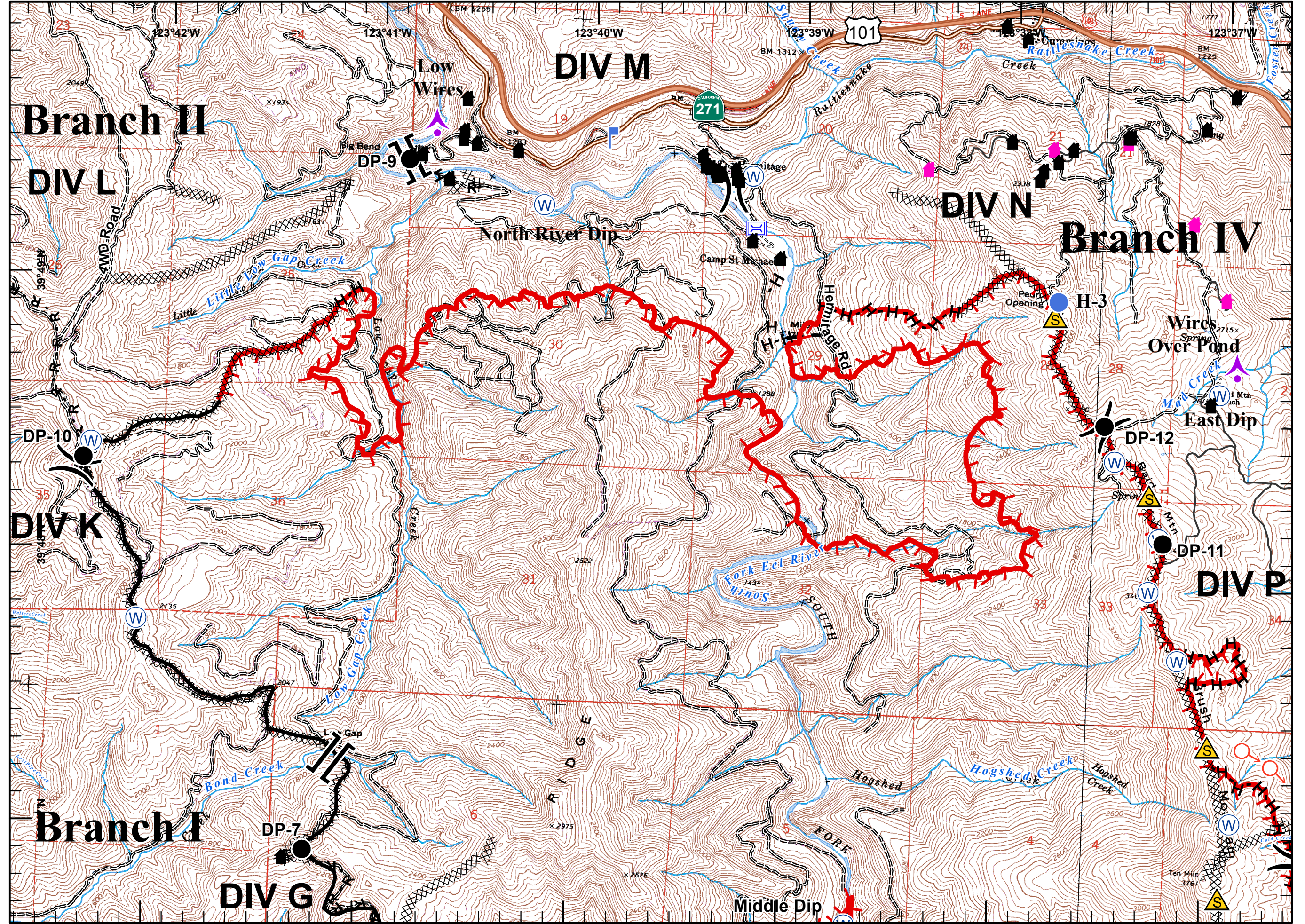


- Branch
- Division
- Aerial Hazard
- Drop Point
- Helispot
- Lookout
- Spot Fire
- Staging Area
- Repeater
- Water Source
- Helibase
- Bridge
- Safety Zone
- Structure
- Structure/Outbuilding
- Retardant Mud Dip
- Mobile Weather Station
- Incident Command Post
- Uncontrolled Fire Edge
- Completed Dozer Line
- Proposed Dozer Line
- Planned Fire Line
- Road as Fire Line
- Completed Line
- Hand Line

Miles
 0 0.5

Hidalgo
 8/12/2014 21:31hrs

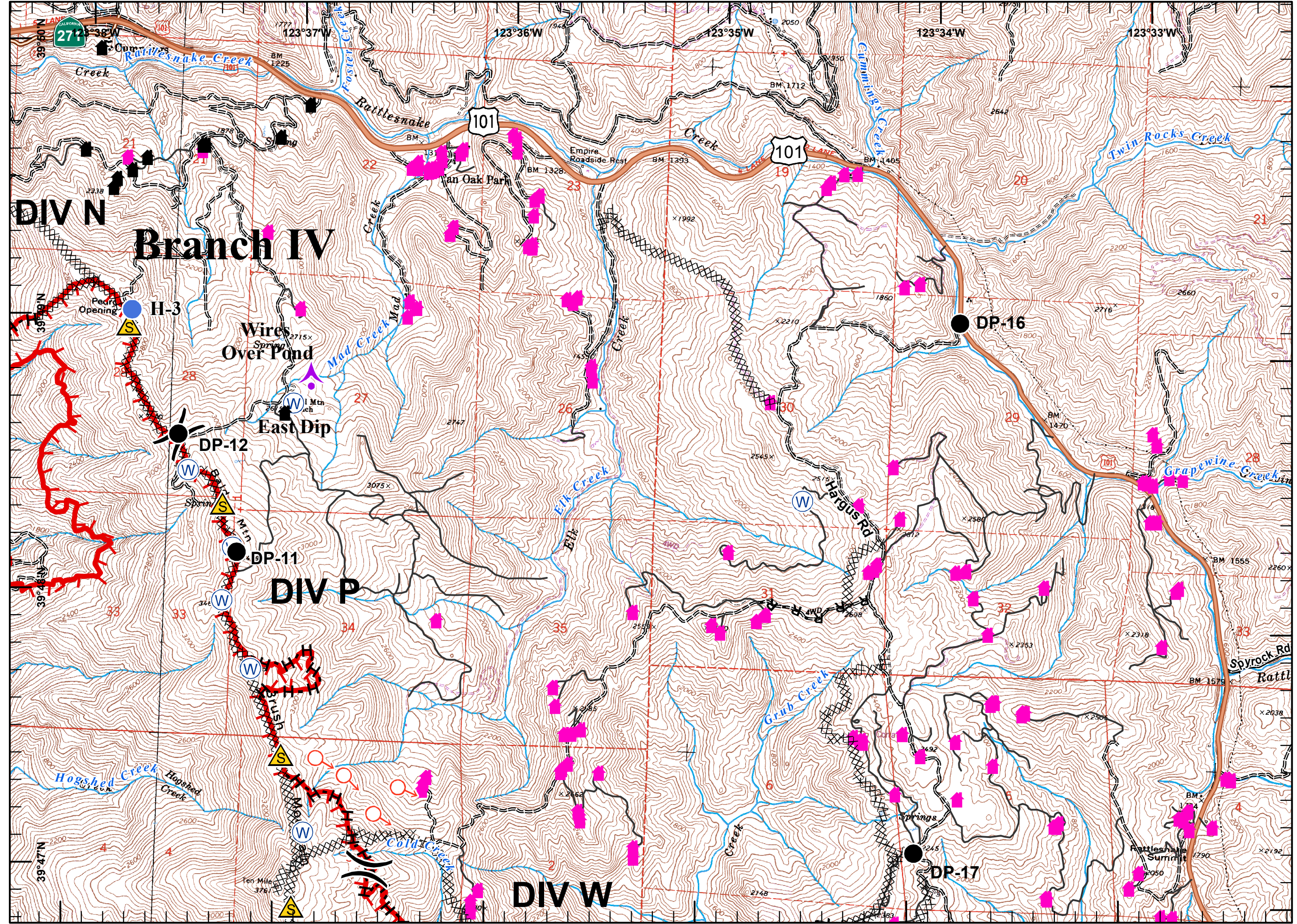




- Branch
- Division
- Aerial Hazard
- Drop Point
- Helispot
- Lookout
- Spot Fire
- Staging Area
- Repeater
- Water Source
- Helibase
- Bridge
- Safety Zone
- Structure
- Structure/Outbuilding
- Retardant Mud Dip
- Mobile Weather Station
- Incident Command Post
- Uncontrolled Fire Edge
- Completed Dozer Line
- Proposed Dozer Line
- Planned Fire Line
- Road as Fire Line
- Completed Line
- Hand Line


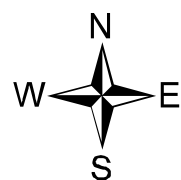
Miles
 0 0.5

Hidalgo
 8/12/2014 21:31hrs

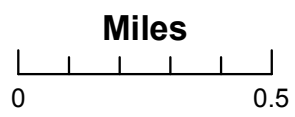




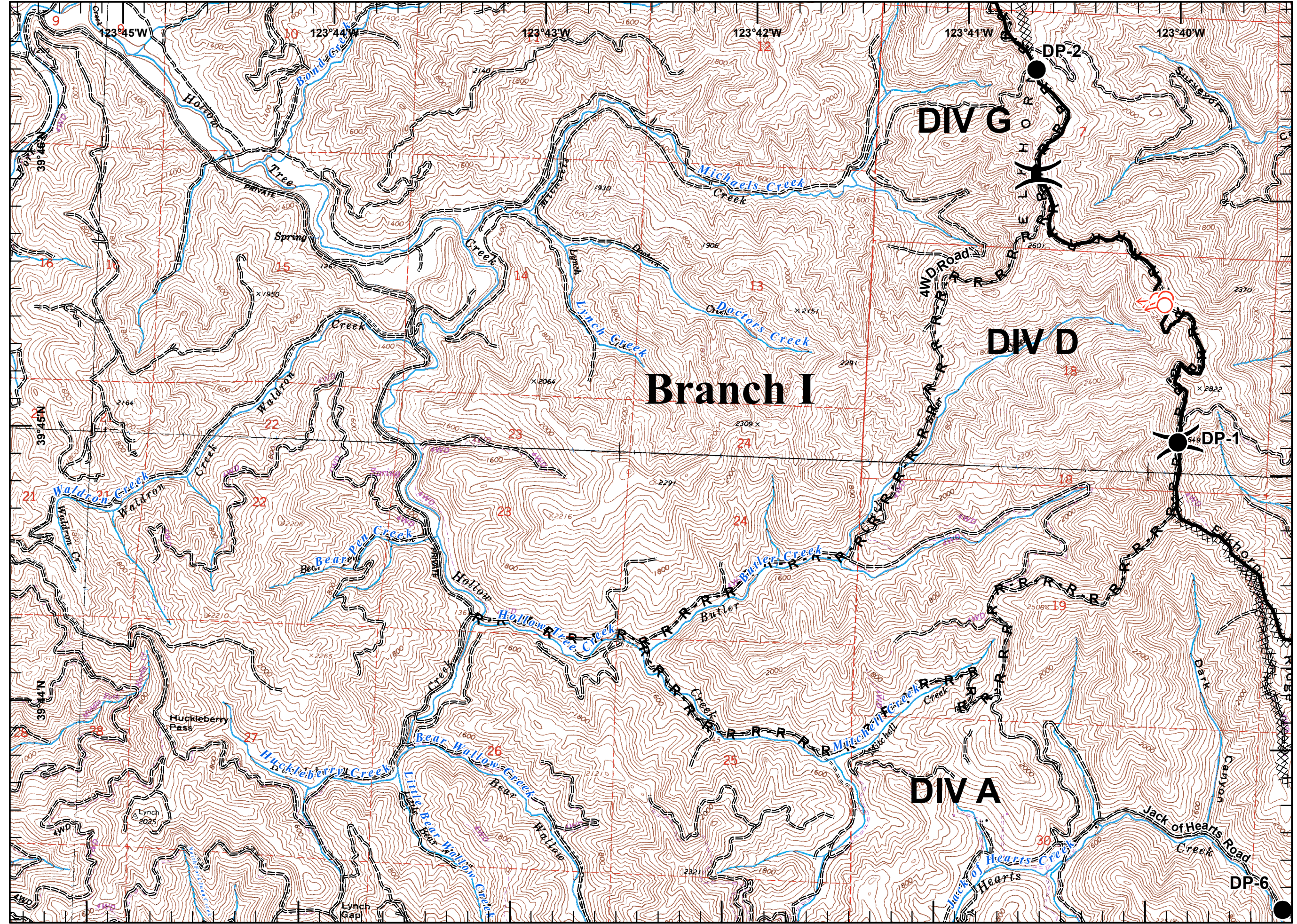
- Branch
- Division
- Aerial Hazard
- Drop Point
- Helispot
- Lookout
- Spot Fire
- Staging Area
- Repeater
- Water Source
- Helibase
- Bridge
- Safety Zone
- Structure
- Structure/Outbuilding
- Retardant Mud Dip
- Mobile Weather Station
- Incident Command Post
- Uncontrolled Fire Edge
- Completed Dozer Line
- Proposed Dozer Line
- Planned Fire Line
- Road as Fire Line
- Completed Line
- Hand Line

Miles


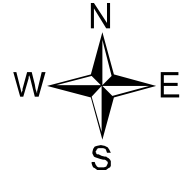


Hidalgo
 8/12/2014 21:31hrs



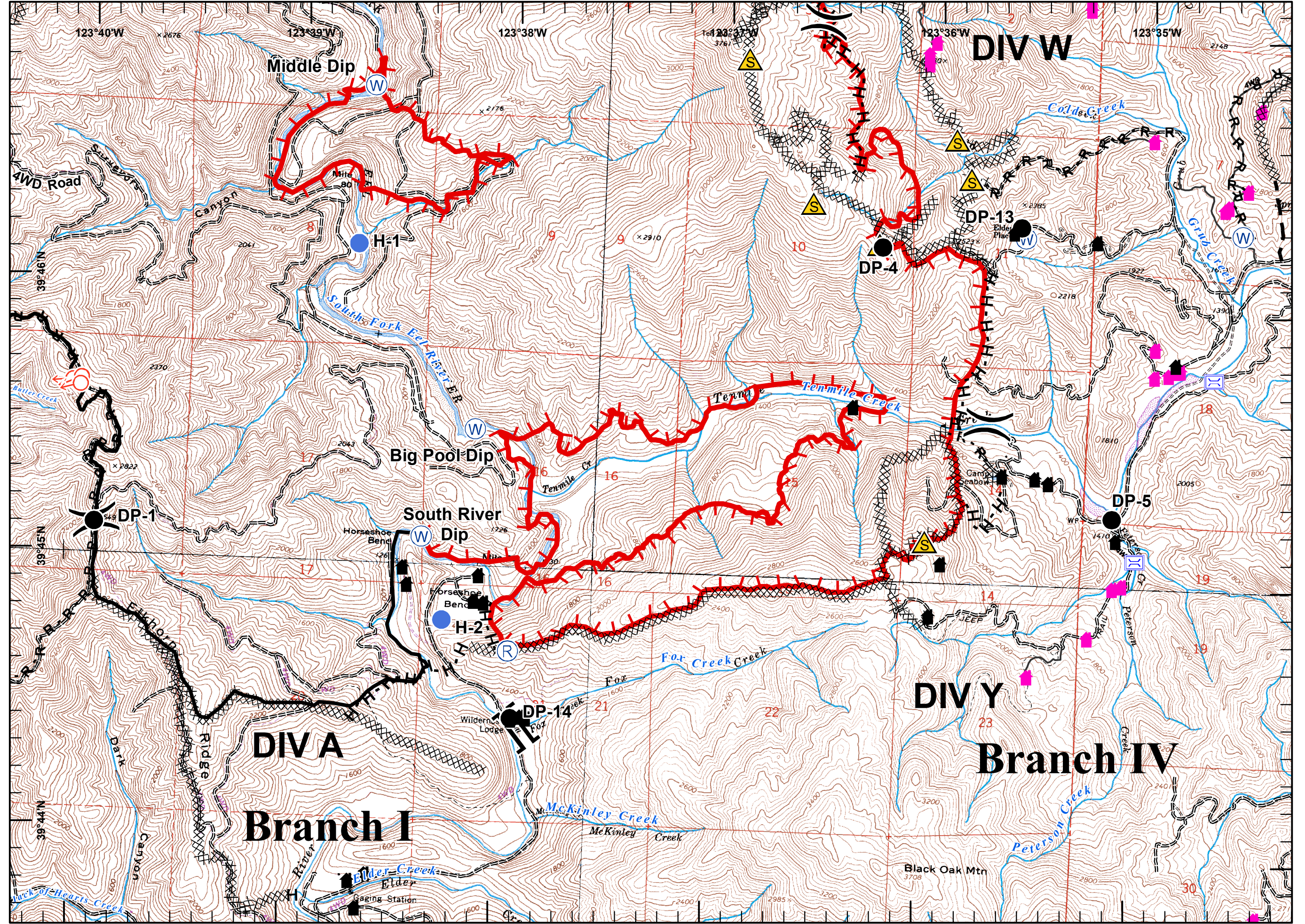


- Branch
- Division
- Aerial Hazard
- Drop Point
- Helispot
- Lookout
- Spot Fire
- Staging Area
- Repeater
- Water Source
- Helibase
- Bridge
- Safety Zone
- Structure
- Structure/Outbuilding
- Retardant Mud Dip
- Mobile Weather Station
- Incident Command Post
- Uncontrolled Fire Edge
- Completed Dozer Line
- Proposed Dozer Line
- Planned Fire Line
- Road as Fire Line
- Completed Line
- Hand Line

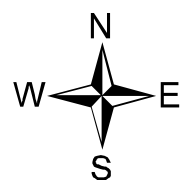
Miles
 0 0.5

Hidalgo
 8/12/2014 21:31hrs

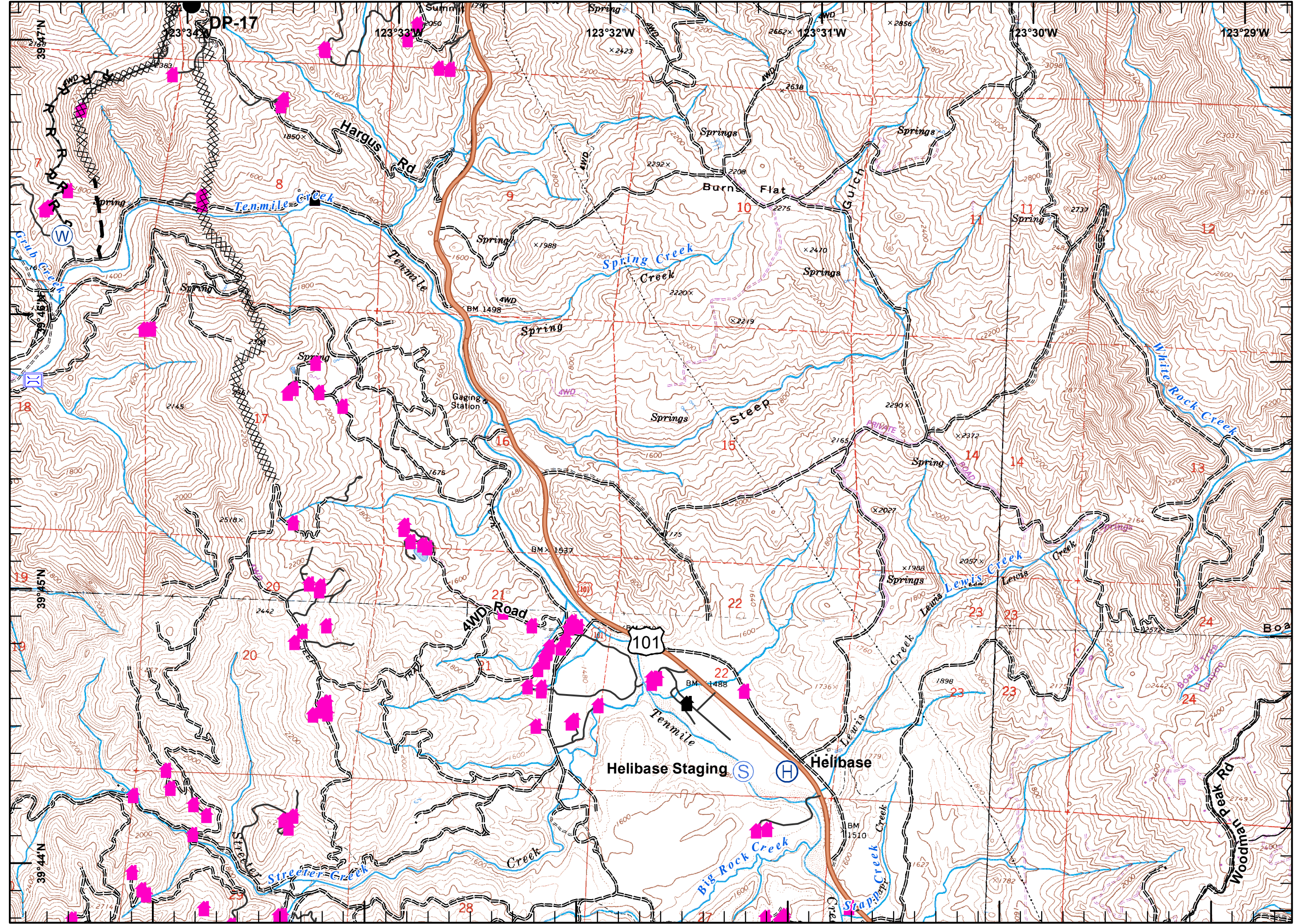




- Branch
- Division
- Aerial Hazard
- Drop Point
- Helispot
- Lookout
- Spot Fire
- Staging Area
- Repeater
- Water Source
- Helibase
- Bridge
- Safety Zone
- Structure
- Structure/Outbuilding
- Retardant Mud Dip
- Mobile Weather Station
- Incident Command Post
- Uncontrolled Fire Edge
- Completed Dozer Line
- Proposed Dozer Line
- Planned Fire Line
- Road as Fire Line
- Completed Line
- Hand Line

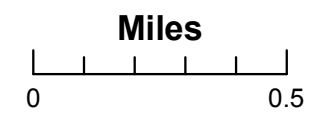
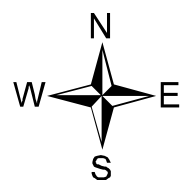


Hidalgo
 8/12/2014 21:31hrs

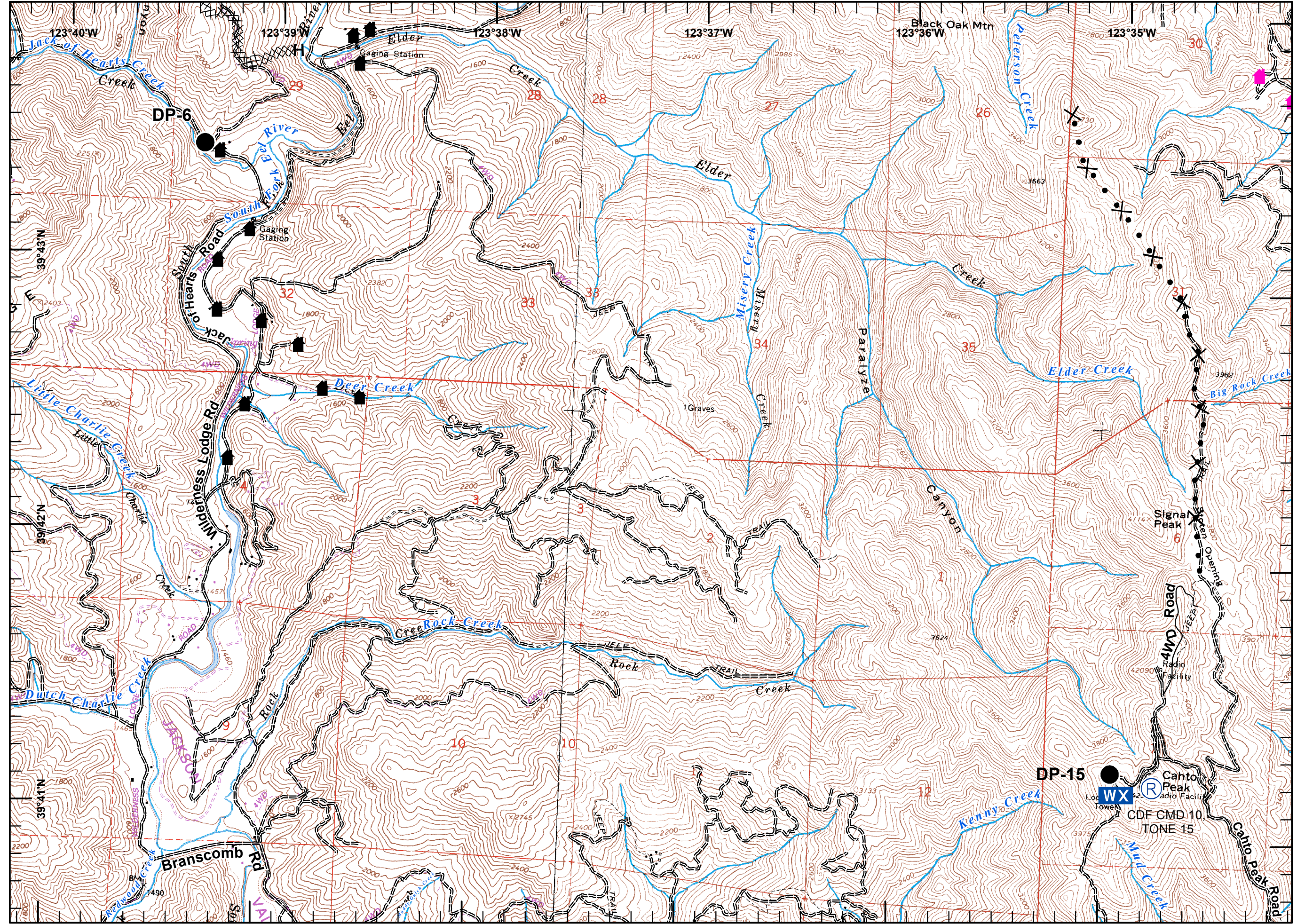




- Branch
- Division
- Aerial Hazard
- Drop Point
- Helispot
- Lookout
- Spot Fire
- Staging Area
- Repeater
- Water Source
- Helibase
- Bridge
- Safety Zone
- Structure
- Structure/Outbuilding
- Retardant Mud Dip
- Mobile Weather Station
- Incident Command Post
- Uncontrolled Fire Edge
- Completed Dozer Line
- Proposed Dozer Line
- Planned Fire Line
- Road as Fire Line
- Completed Line
- Hand Line

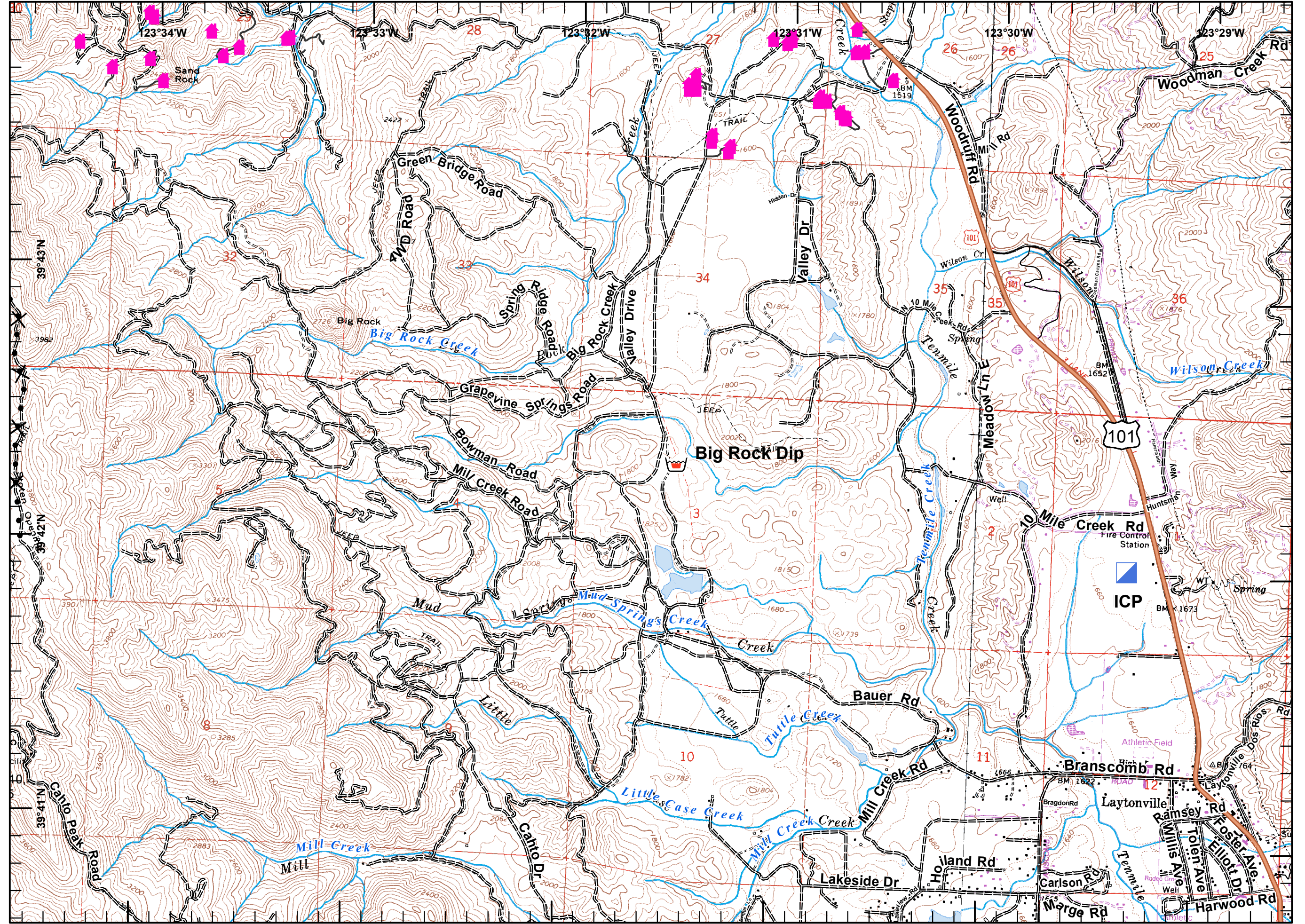


Hidalgo
 8/12/2014 21:31hrs





- Branch
- Division
- Aerial Hazard
- Drop Point
- Helispot
- Lookout
- Spot Fire
- Staging Area
- Repeater
- Water Source
- Helibase
- Bridge
- Safety Zone
- Structure
- Structure/Outbuilding
- Retardant Mud Dip
- Mobile Weather Station
- Incident Command Post
- Uncontrolled Fire Edge
- Completed Dozer Line
- Proposed Dozer Line
- Planned Fire Line
- Road as Fire Line
- Completed Line
- Hand Line





- Branch
- Division
- Aerial Hazard
- Drop Point
- Helispot
- Lookout
- Spot Fire
- Staging Area
- Repeater
- Water Source
- Helibase
- Bridge
- Safety Zone
- Structure
- Structure/Outbuilding
- Retardant Mud Dip
- Mobile Weather Station
- Incident Command Post
- Uncontrolled Fire Edge
- Completed Dozer Line
- Proposed Dozer Line
- Planned Fire Line
- Road as Fire Line
- Completed Line
- Hand Line

