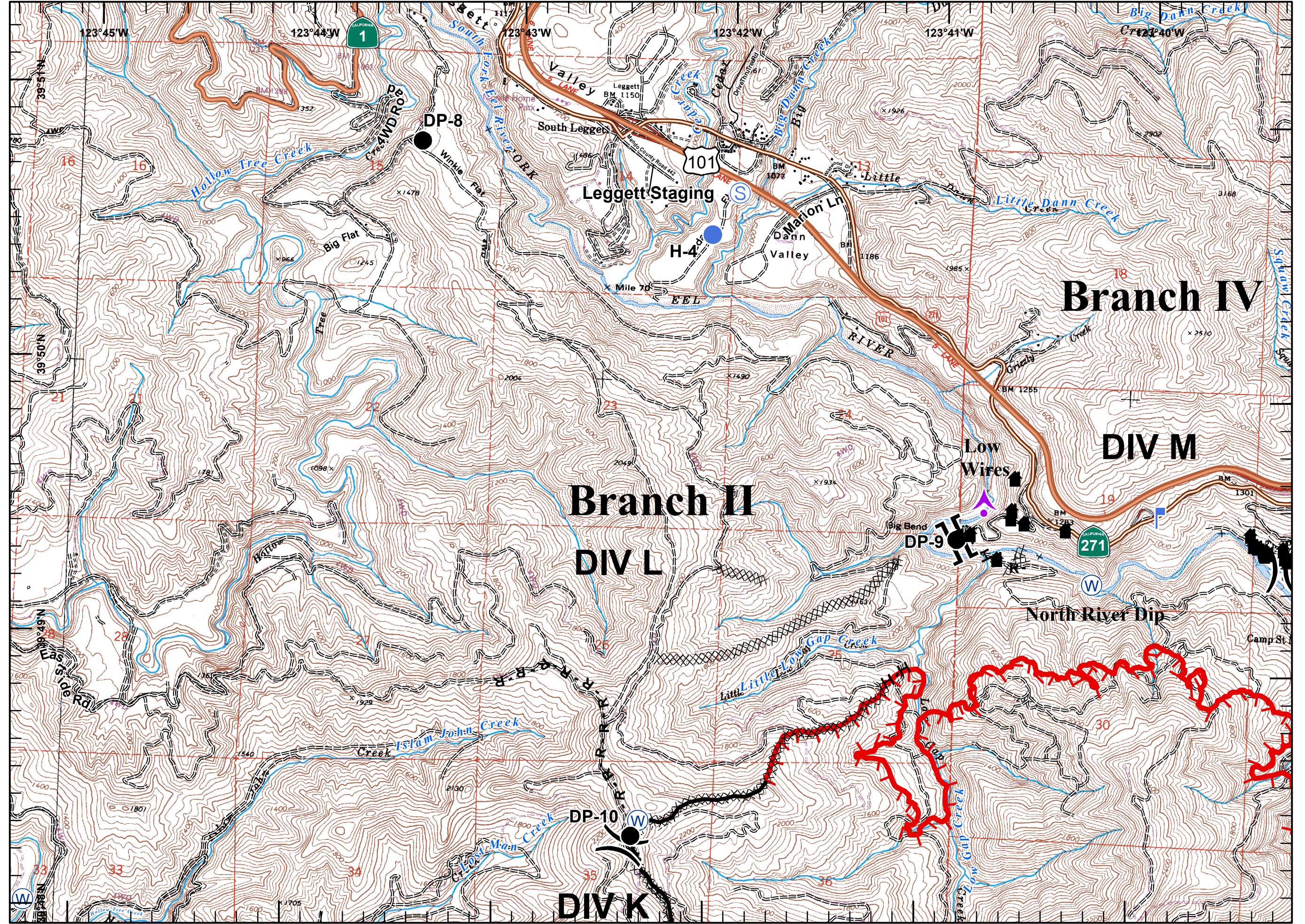




- Branch
- Division
- Aerial Hazard
- Drop Point
- Helispot
- Lookout
- Spot Fire
- Staging Area
- Repeater
- Water Source
- Helibase
- Bridge
- Safety Zone
- Structure/Outbuilding
- Retardant Mud Dip
- Mobile Weather Station
- Incident Command Post
- Uncontrolled Fire Edge
- Completed Dozer Line
- Proposed Dozer Line
- Planned Fire Line
- Road as Fire Line
- Completed Line
- Hand Line



Miles
 0 0.5

Hidalgo
 8/13/2014 20:33hrs

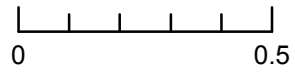




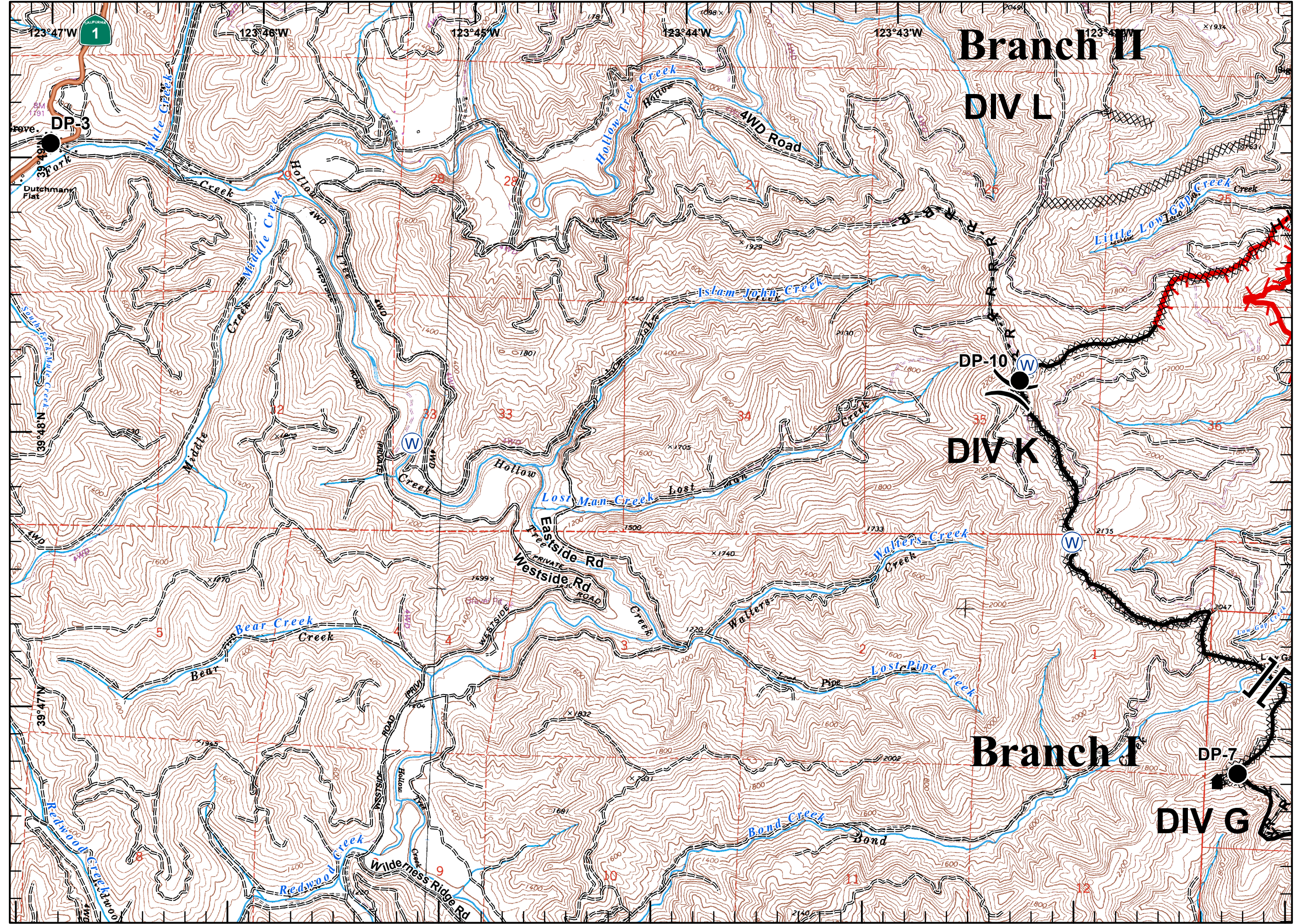
- || Branch
-) (Division
- ▲ Aerial Hazard
- Drop Point
- Helispot
- └ Lookout
- ♂ Spot Fire
- Ⓢ Staging Area
- Ⓡ Repeater
- Ⓦ Water Source
- Ⓜ Helibase
- ⌒ Bridge
- ⚠ Safety Zone
- 🏠 Structure/Outbuilding
- 🛒 Retardant Mud Dip
- WX Mobile Weather Station
- ▣ Incident Command Post
- └ Uncontrolled Fire Edge
- XXXX Completed Dozer Line
- ⊗ Proposed Dozer Line
- ▬ Planned Fire Line
- R - Road as Fire Line
- ▬ Completed Line
- H - Hand Line

Miles



Hidalgo
 8/13/2014 20:33hrs

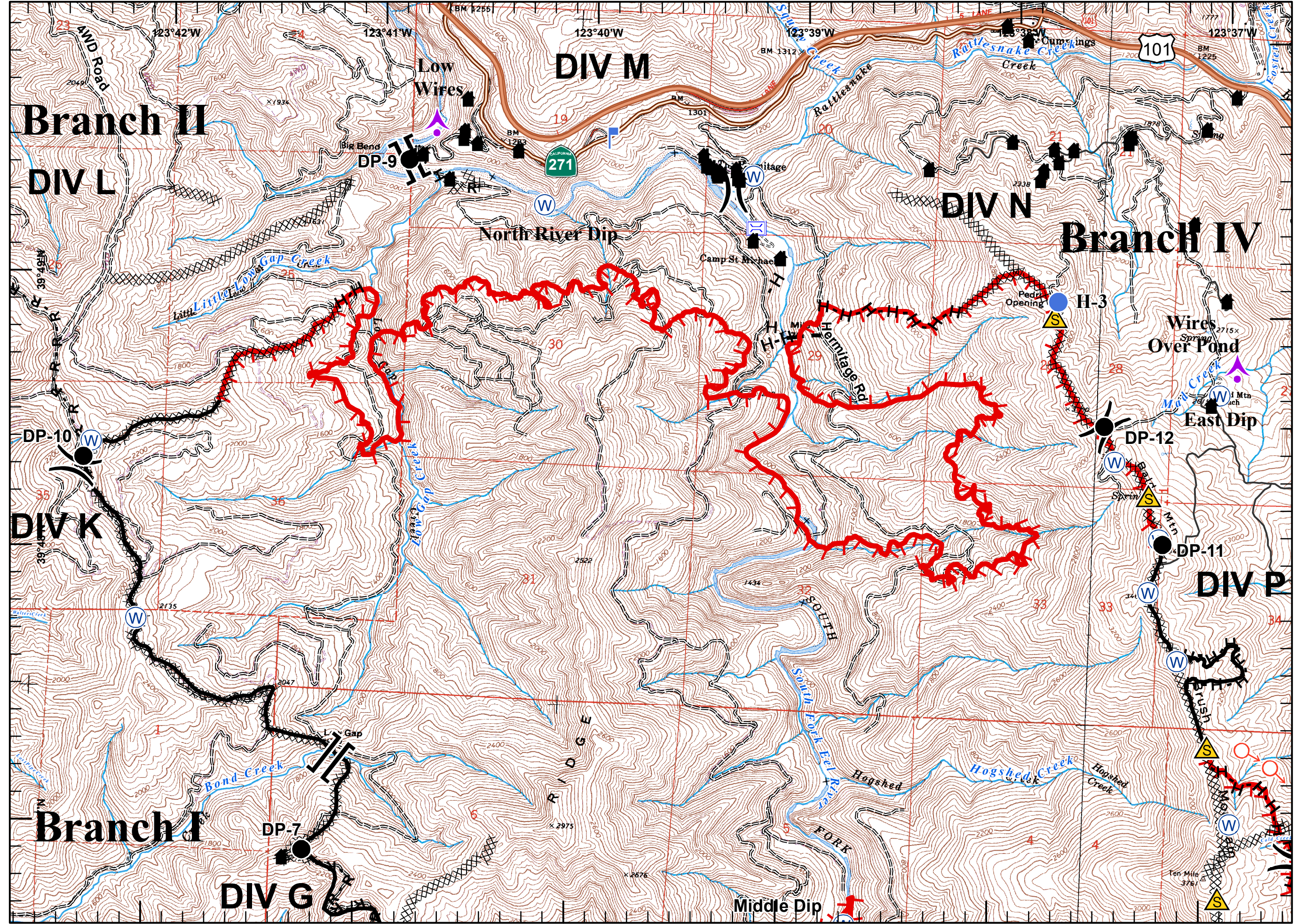




- Branch
- Division
- Aerial Hazard
- Drop Point
- Helispot
- Lookout
- Spot Fire
- Staging Area
- Repeater
- Water Source
- Helibase
- Bridge
- Safety Zone
- Structure/Outbuilding
- Retardant Mud Dip
- Mobile Weather Station
- Incident Command Post
- Uncontrolled Fire Edge
- Completed Dozer Line
- Proposed Dozer Line
- Planned Fire Line
- Road as Fire Line
- Completed Line
- Hand Line


Miles
 0 0.5


Hidalgo
 8/13/2014 20:33hrs



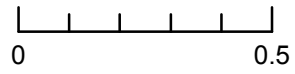


- Branch
- Division
- Aerial Hazard
- Drop Point
- Helispot
- Lookout
- Spot Fire
- Staging Area
- Repeater
- Water Source
- Helibase
- Bridge
- Safety Zone
- Structure/Outbuilding
- Retardant Mud Dip
- Mobile Weather Station
- Incident Command Post
- Uncontrolled Fire Edge
- Completed Dozer Line
- Proposed Dozer Line
- Planned Fire Line
- Road as Fire Line
- Completed Line
- Hand Line

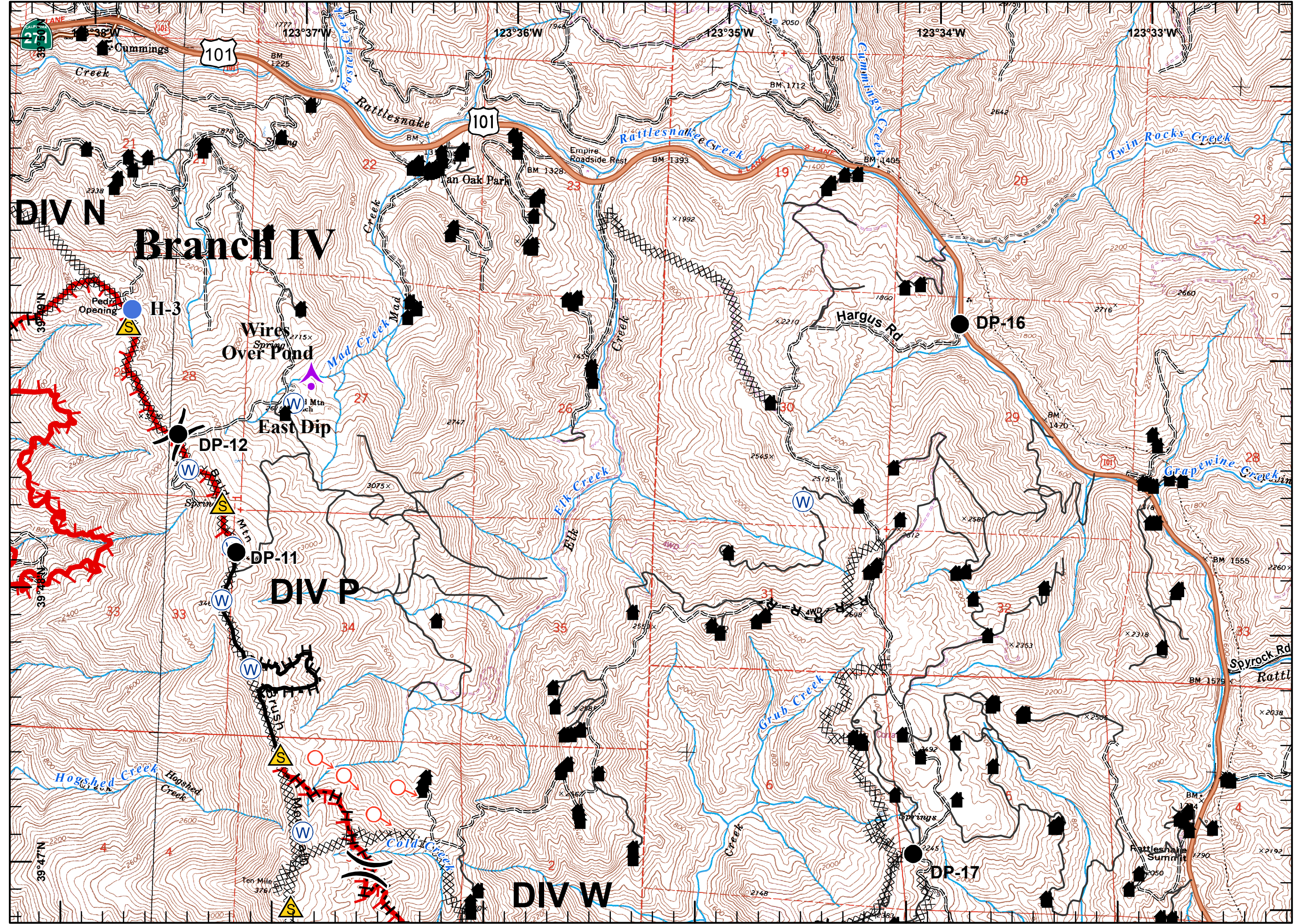




Miles





Hidalgo
 8/13/2014 20:33hrs

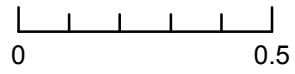




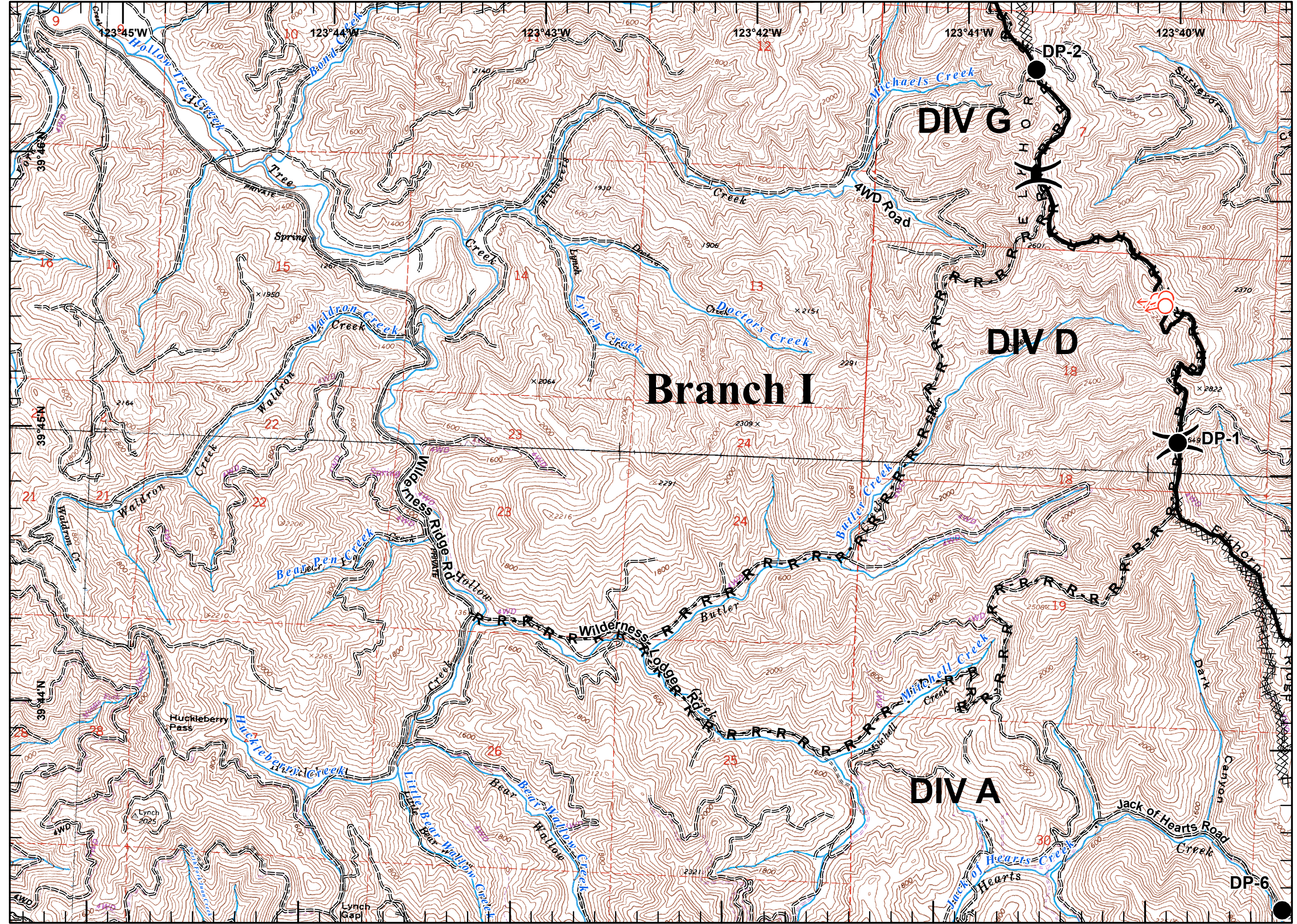
- || Branch
-) (Division
- ▲ Aerial Hazard
- Drop Point
- Helispot
- └ Lookout
- ♂ Spot Fire
- Ⓢ Staging Area
- Ⓡ Repeater
- Ⓦ Water Source
- Ⓜ Helibase
- ⌢ Bridge
- ⚠ Safety Zone
- 🏠 Structure/Outbuilding
- 🪣 Retardant Mud Dip
- WX Mobile Weather Station
- ▣ Incident Command Post
- └ Uncontrolled Fire Edge
- XXXX Completed Dozer Line
- ⊗ Proposed Dozer Line
- ▬ Planned Fire Line
- R - Road as Fire Line
- ▬ Completed Line
- H - Hand Line

Miles





Hidalgo
 8/13/2014 20:33hrs



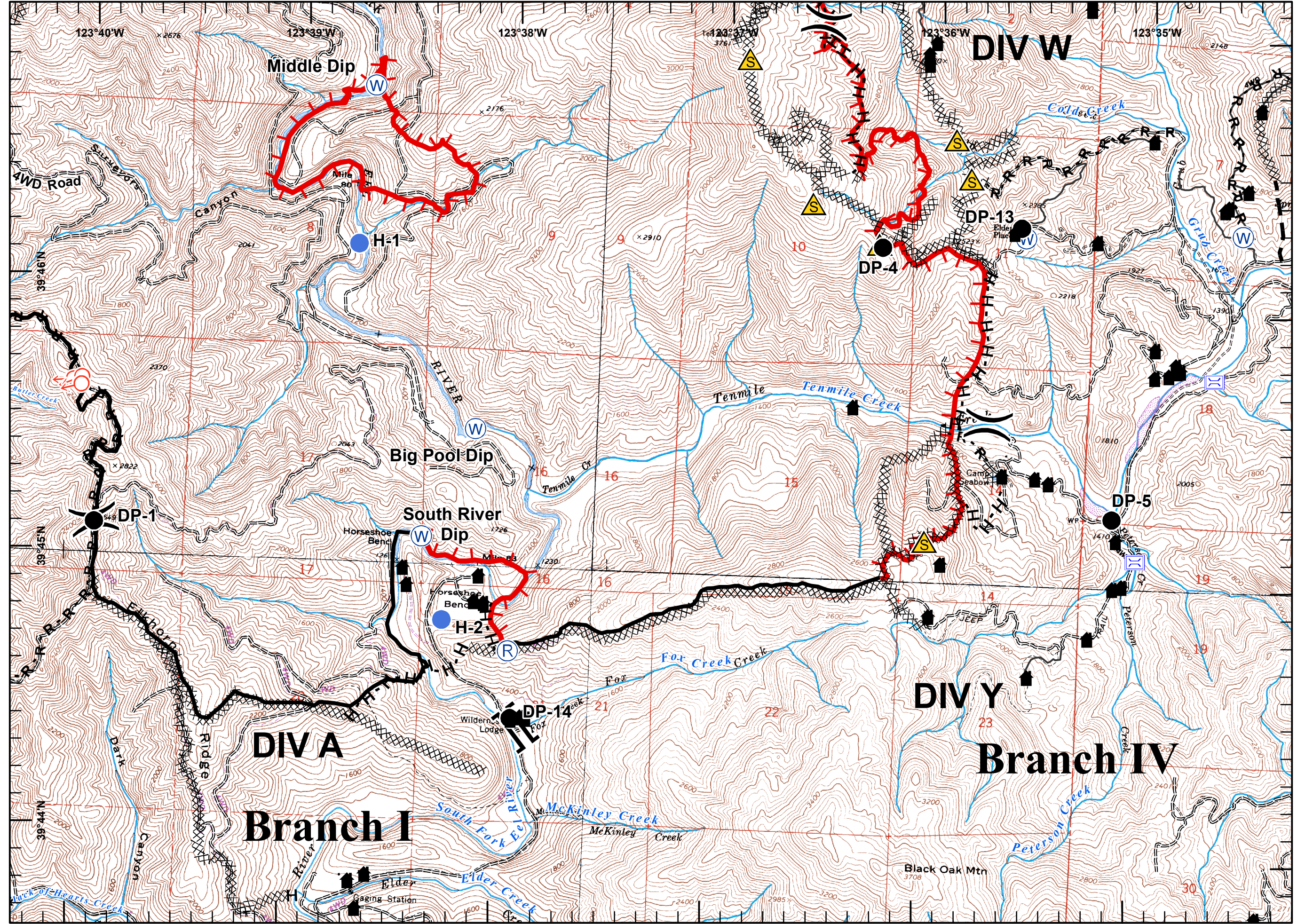


- || Branch
-) (Division
- ▲ Aerial Hazard
- Drop Point
- Helispot
- ⌚ Lookout
- ♂ Spot Fire
- ⊙ Staging Area
- ⊙ Repeater
- ⊙ Water Source
- ⊙ Helibase
- ⊙ Bridge
- ▲ Safety Zone
- 🏠 Structure/Outbuilding
- 🍷 Retardant Mud Dip
- WX Mobile Weather Station
- 🏠 Incident Command Post
- 🔥 Uncontrolled Fire Edge
- XXXX Completed Dozer Line
- ⊗ Proposed Dozer Line
- Planned Fire Line
- R - Road as Fire Line
- Completed Line
- H - Hand Line

Miles
 0 0.5

Hidalgo
 8/13/2014 20:33hrs

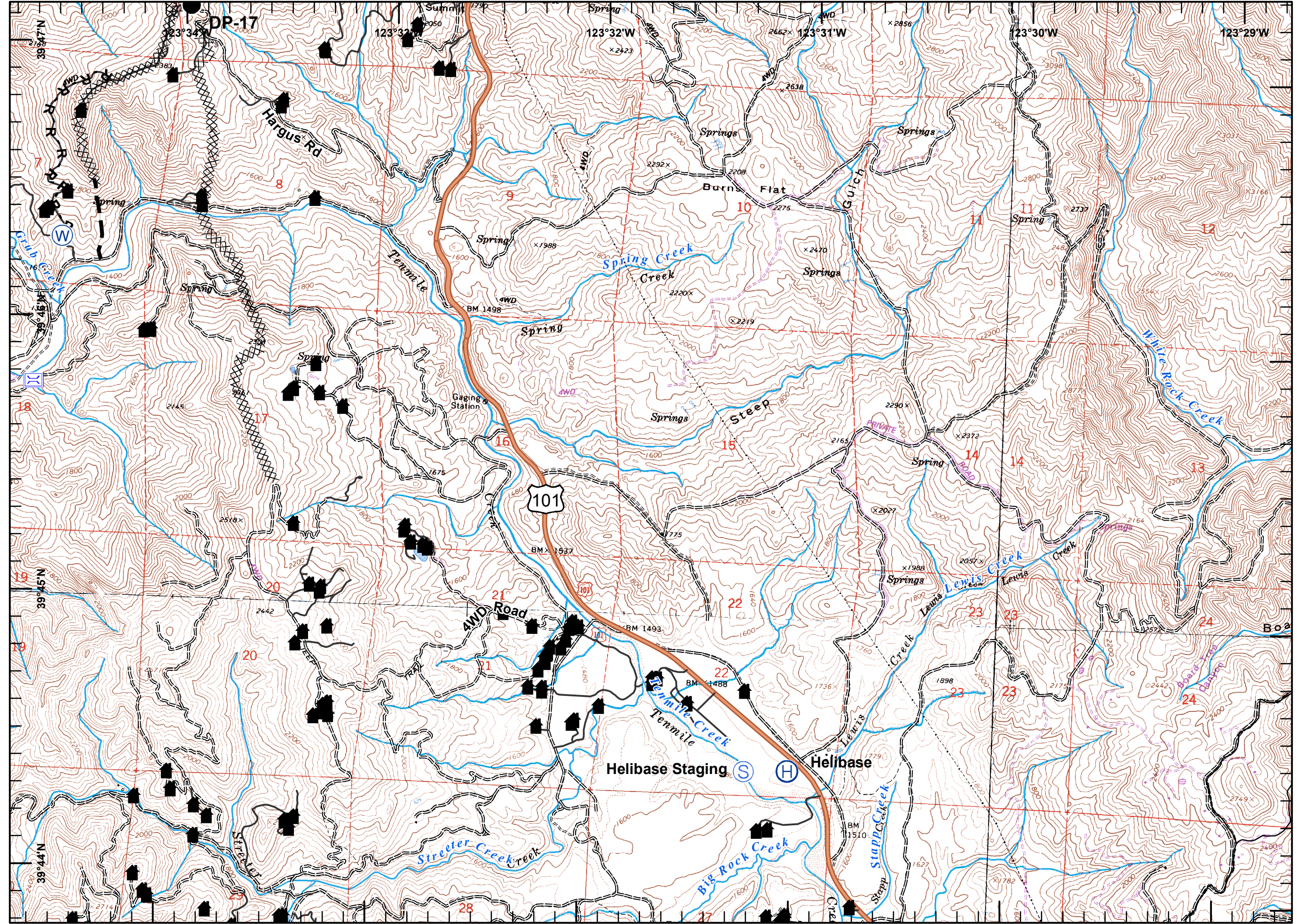




- Branch
- Division
- Aerial Hazard
- Drop Point
- Helispot
- Lookout
- Spot Fire
- Staging Area
- Repeater
- Water Source
- Helibase
- Bridge
- Safety Zone
- Structure/Outbuilding
- Retardant Mud Dip
- Mobile Weather Station
- Incident Command Post
- Uncontrolled Fire Edge
- Completed Dozer Line
- Proposed Dozer Line
- Planned Fire Line
- Road as Fire Line
- Completed Line
- Hand Line


Miles
 0 0.5


Hidalgo
 8/13/2014 20:33hrs



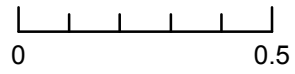


- Branch
- Division
- Aerial Hazard
- Drop Point
- Helispot
- Lookout
- Spot Fire
- Staging Area
- Repeater
- Water Source
- Helibase
- Bridge
- Safety Zone
- Structure/Outbuilding
- Retardant Mud Dip
- Mobile Weather Station
- Incident Command Post
- Uncontrolled Fire Edge
- Completed Dozer Line
- Proposed Dozer Line
- Planned Fire Line
- Road as Fire Line
- Completed Line
- Hand Line

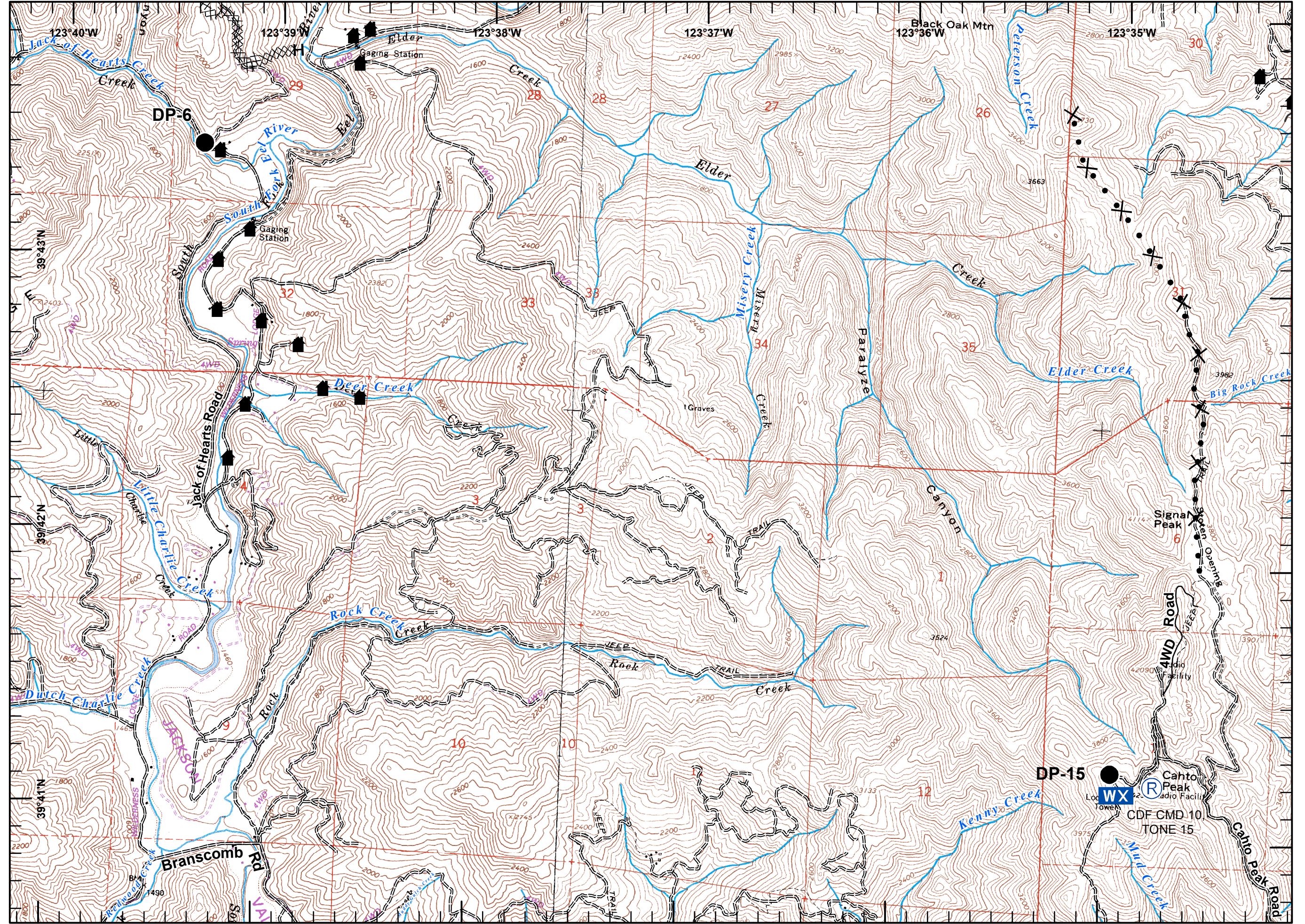




Miles





Hidalgo
 8/13/2014 20:33hrs



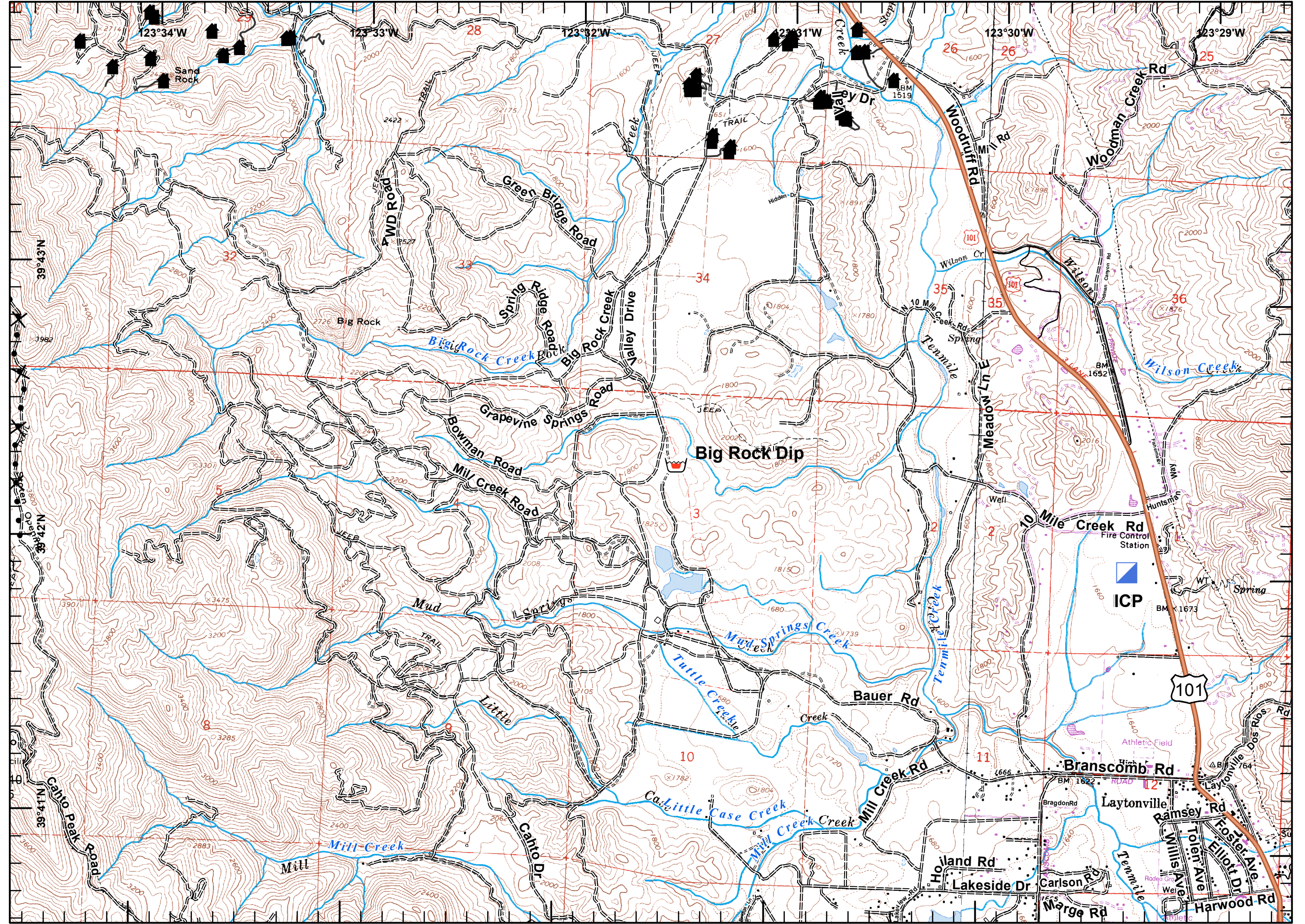


- || Branch
-) (Division
- ▲ Aerial Hazard
- Drop Point
- Helispot
- Lookout
- ♂ Spot Fire
- ⊙ Staging Area
- ⊙ Repeater
- ⊙ Water Source
- ⊙ Helibase
- ⊙ Bridge
- ▲ Safety Zone
- Structure/Outbuilding
- Retardant Mud Dip
- WX Mobile Weather Station
- Incident Command Post
- Uncontrolled Fire Edge
- XXXX Completed Dozer Line
- × • Proposed Dozer Line
- Planned Fire Line
- R - Road as Fire Line
- Completed Line
- H - Hand Line



Miles
 0 0.5

Hidalgo
 8/13/2014 20:33hrs

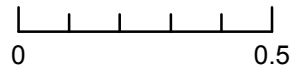




- Branch
- Division
- Aerial Hazard
- Drop Point
- Helispot
- Lookout
- Spot Fire
- Staging Area
- Repeater
- Water Source
- Helibase
- Bridge
- Safety Zone
- Structure/Outbuilding
- Retardant Mud Dip
- Mobile Weather Station
- Incident Command Post
- Uncontrolled Fire Edge
- Completed Dozer Line
- Proposed Dozer Line
- Planned Fire Line
- Road as Fire Line
- Completed Line
- Hand Line

Miles



Hidalgo
 8/13/2014 20:34hrs

