

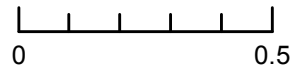




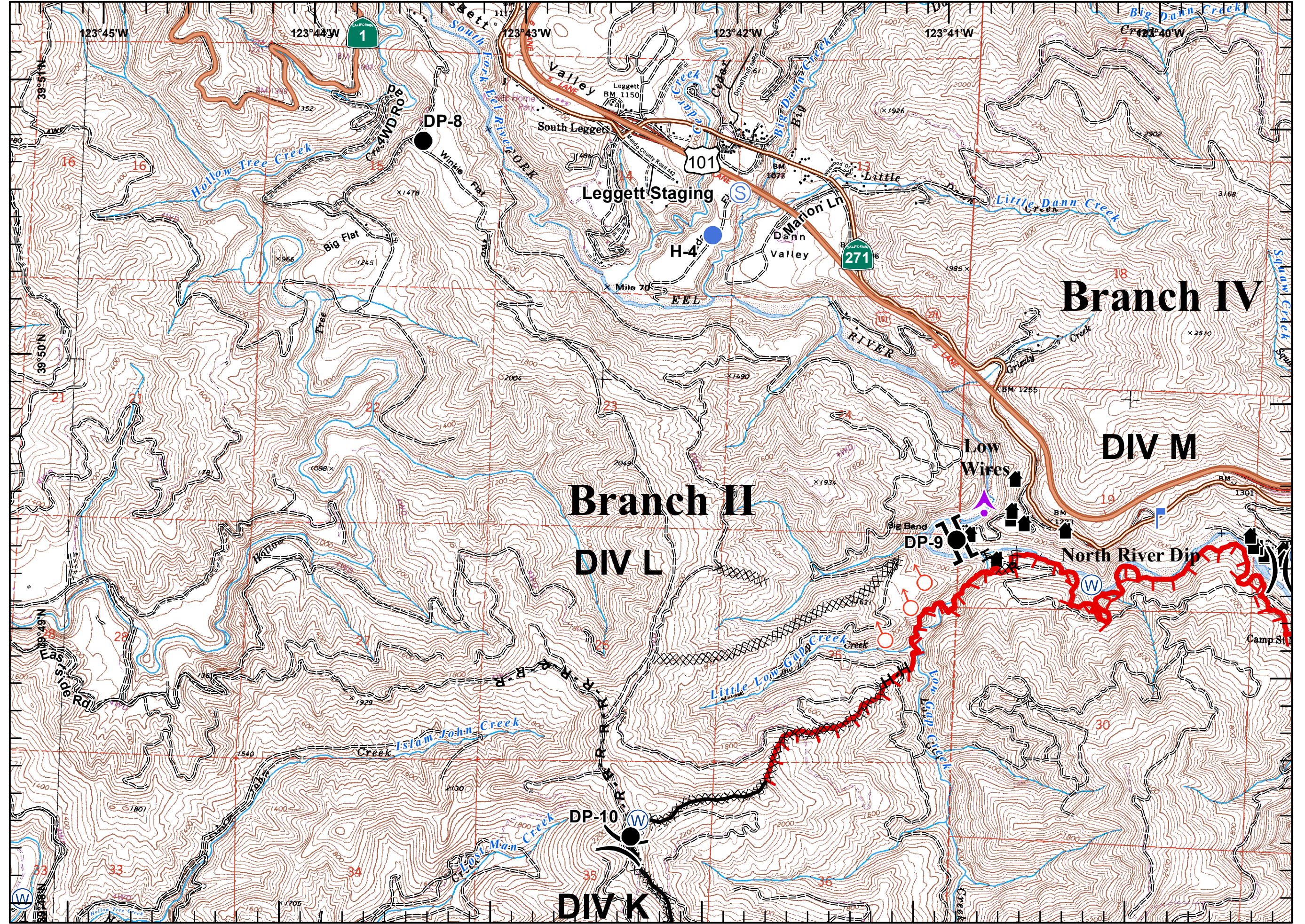
- Branch
- Division
- Aerial Hazard
- Drop Point
- Helispot
- Lookout
- Spot Fire
- Staging Area
- Repeater
- Water Source
- Helibase
- Bridge
- Safety Zone
- Structure/Outbuilding
- Retardant Mud Dip
- Mobile Weather Station
- Incident Command Post
- Uncontrolled Fire Edge
- Completed Dozer Line
- Proposed Dozer Line
- Planned Fire Line
- Road as Fire Line
- Completed Line
- Hand Line

Miles





Hidalgo
 8/15/2014 20:34hrs

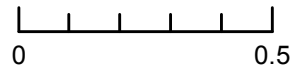




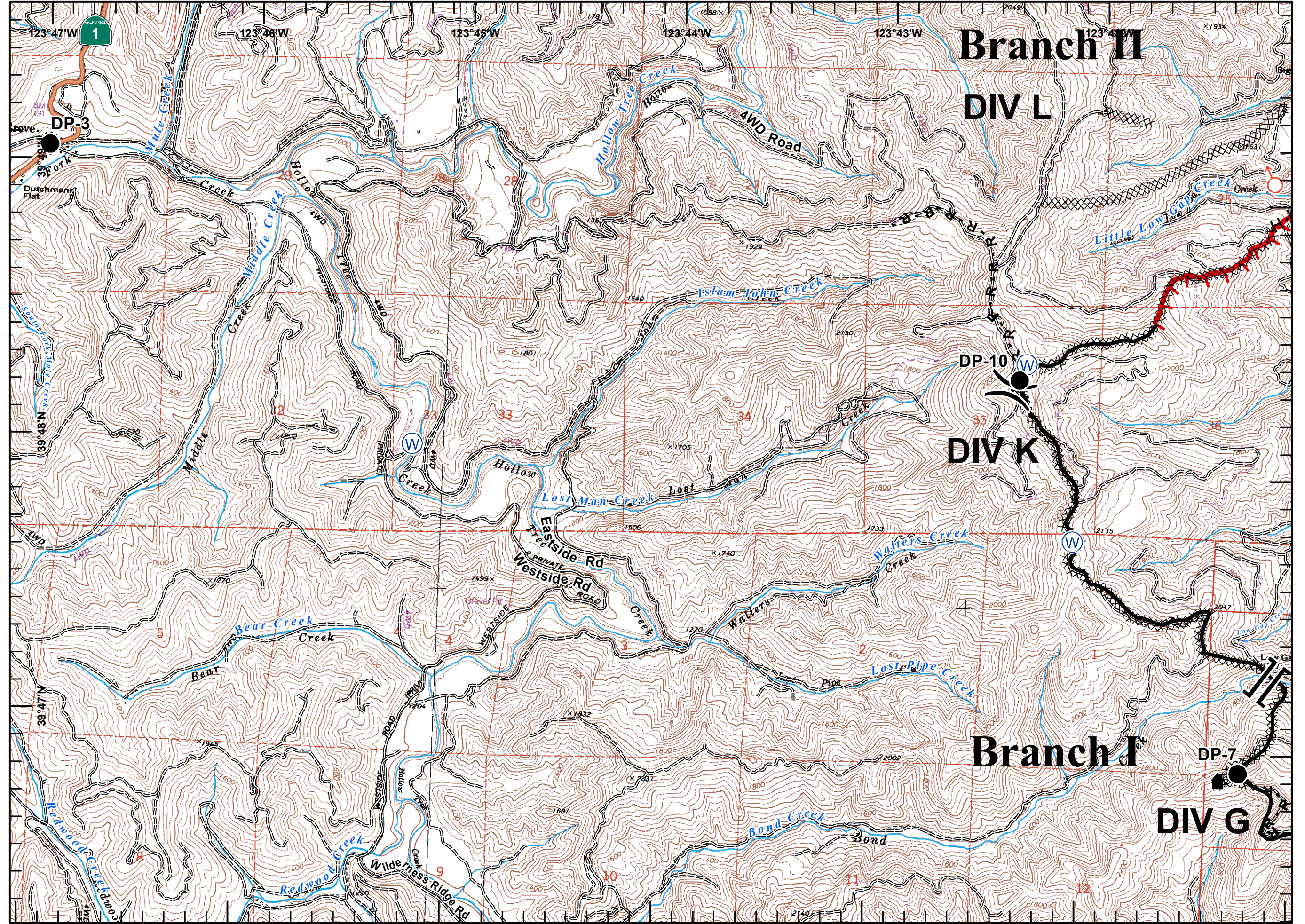
- Branch
- Division
- Aerial Hazard
- Drop Point
- Helispot
- Lookout
- Spot Fire
- Staging Area
- Repeater
- Water Source
- Helibase
- Bridge
- Safety Zone
- Structure/Outbuilding
- Retardant Mud Dip
- Mobile Weather Station
- Incident Command Post
- Uncontrolled Fire Edge
- Completed Dozer Line
- Proposed Dozer Line
- Planned Fire Line
- Road as Fire Line
- Completed Line
- Hand Line

Miles





Hidalgo
 8/15/2014 20:34hrs

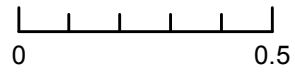




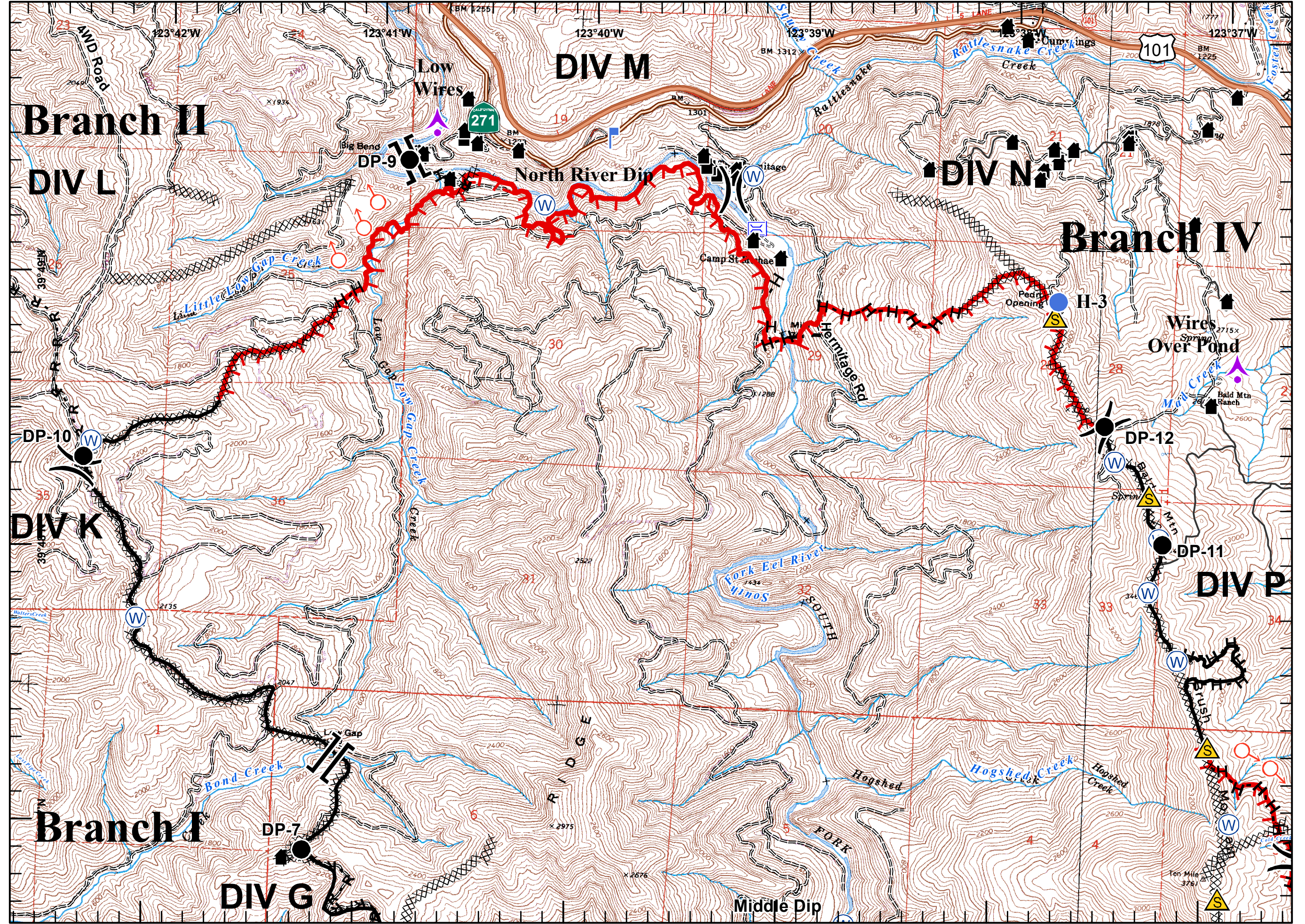
- Branch
- Division
- Aerial Hazard
- Drop Point
- Helispot
- Lookout
- Spot Fire
- Staging Area
- Repeater
- Water Source
- Helibase
- Bridge
- Safety Zone
- Structure/Outbuilding
- Retardant Mud Dip
- Mobile Weather Station
- Incident Command Post
- Uncontrolled Fire Edge
- Completed Dozer Line
- Proposed Dozer Line
- Planned Fire Line
- Road as Fire Line
- Completed Line
- Hand Line

Miles





Hidalgo
 8/15/2014 20:34hrs

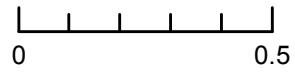




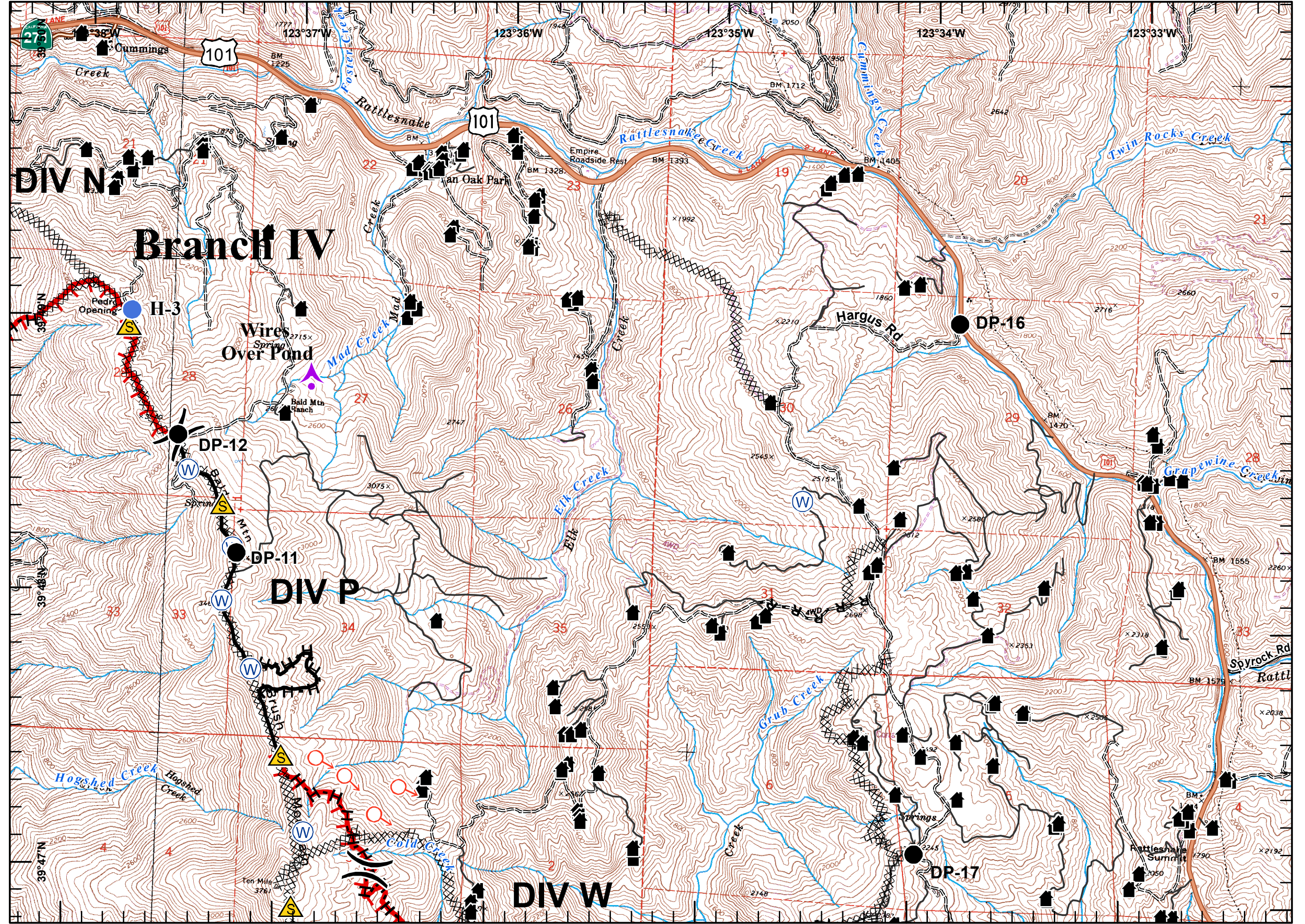
- Branch
- Division
- Aerial Hazard
- Drop Point
- Helispot
- Lookout
- Spot Fire
- Staging Area
- Repeater
- Water Source
- Helibase
- Bridge
- Safety Zone
- Structure/Outbuilding
- Retardant Mud Dip
- Mobile Weather Station
- Incident Command Post
- Uncontrolled Fire Edge
- Completed Dozer Line
- Proposed Dozer Line
- Planned Fire Line
- Road as Fire Line
- Completed Line
- Hand Line

Miles





Hidalgo
 8/15/2014 20:34hrs

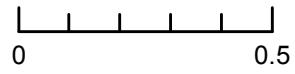




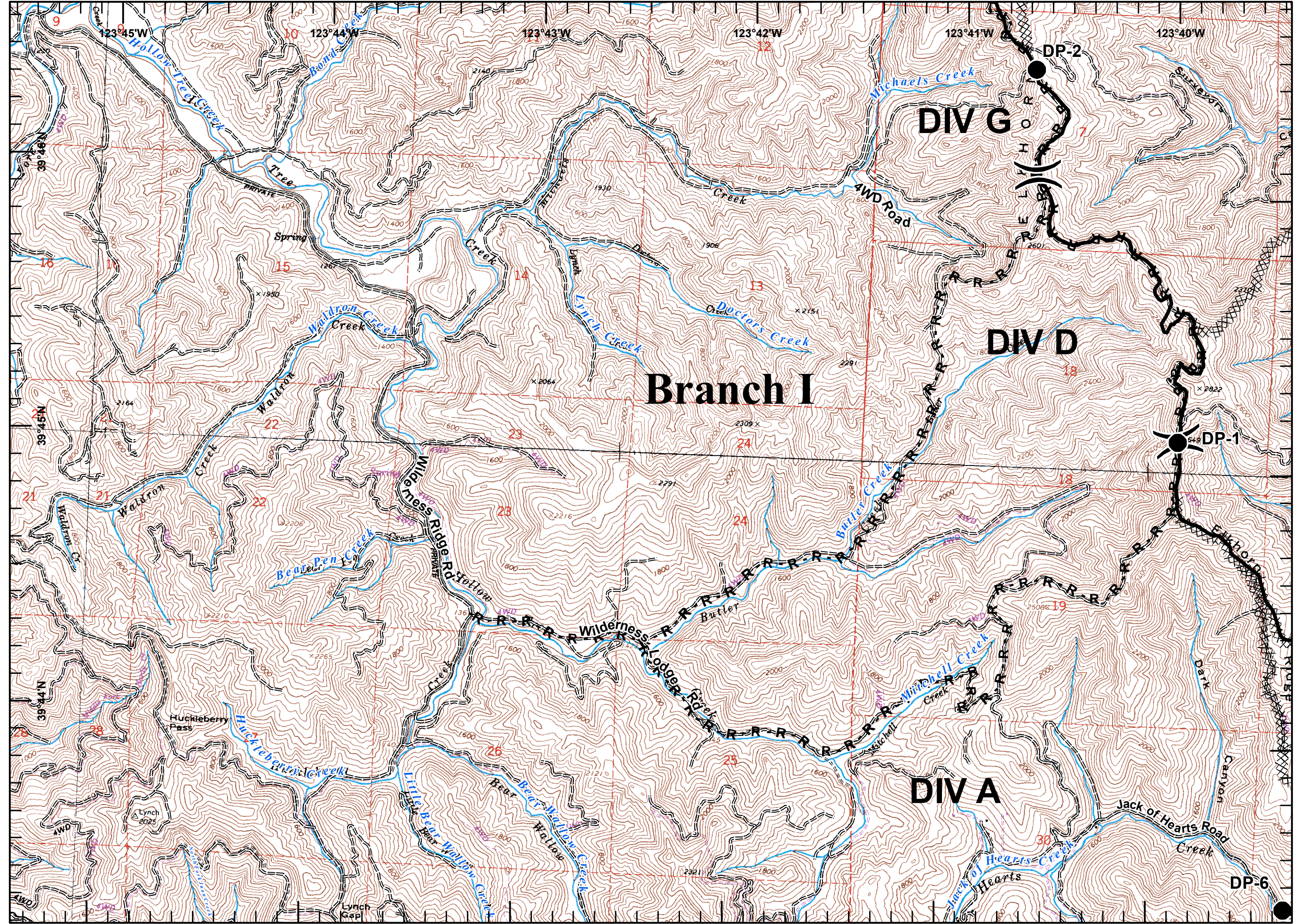
- || Branch
-) (Division
- ▲ Aerial Hazard
- Drop Point
- Helispot
- ⚡ Lookout
- ♂ Spot Fire
- ⊙ Staging Area
- Ⓡ Repeater
- Ⓜ Water Source
- Ⓜ Helibase
- ⌈⌋ Bridge
- ⚠ Safety Zone
- 🏠 Structure/Outbuilding
- 🛒 Retardant Mud Dip
- WX Mobile Weather Station
- 🏠 Incident Command Post
- 🔥 Uncontrolled Fire Edge
- XXXX Completed Dozer Line
- ⊗ Proposed Dozer Line
- Planned Fire Line
- R - Road as Fire Line
- Completed Line
- H - Hand Line

Miles





Hidalgo
 8/15/2014 20:34hrs

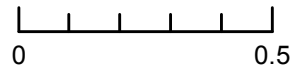




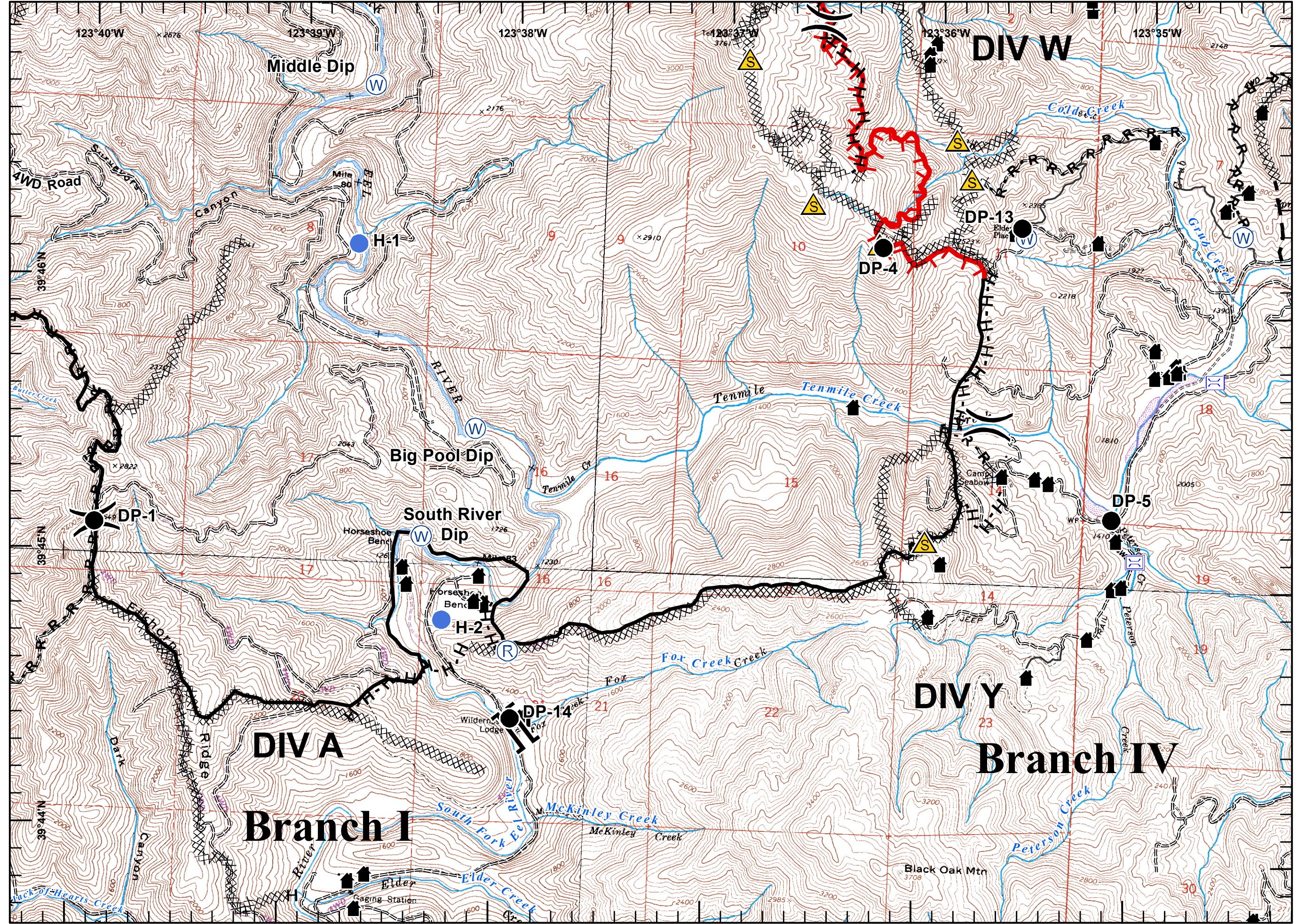
- Branch
- Division
- Aerial Hazard
- Drop Point
- Helispot
- Lookout
- Spot Fire
- Staging Area
- Repeater
- Water Source
- Helibase
- Bridge
- Safety Zone
- Structure/Outbuilding
- Retardant Mud Dip
- Mobile Weather Station
- Incident Command Post
- Uncontrolled Fire Edge
- Completed Dozer Line
- Proposed Dozer Line
- Planned Fire Line
- Road as Fire Line
- Completed Line
- Hand Line

Miles



Hidalgo
 8/15/2014 20:34hrs

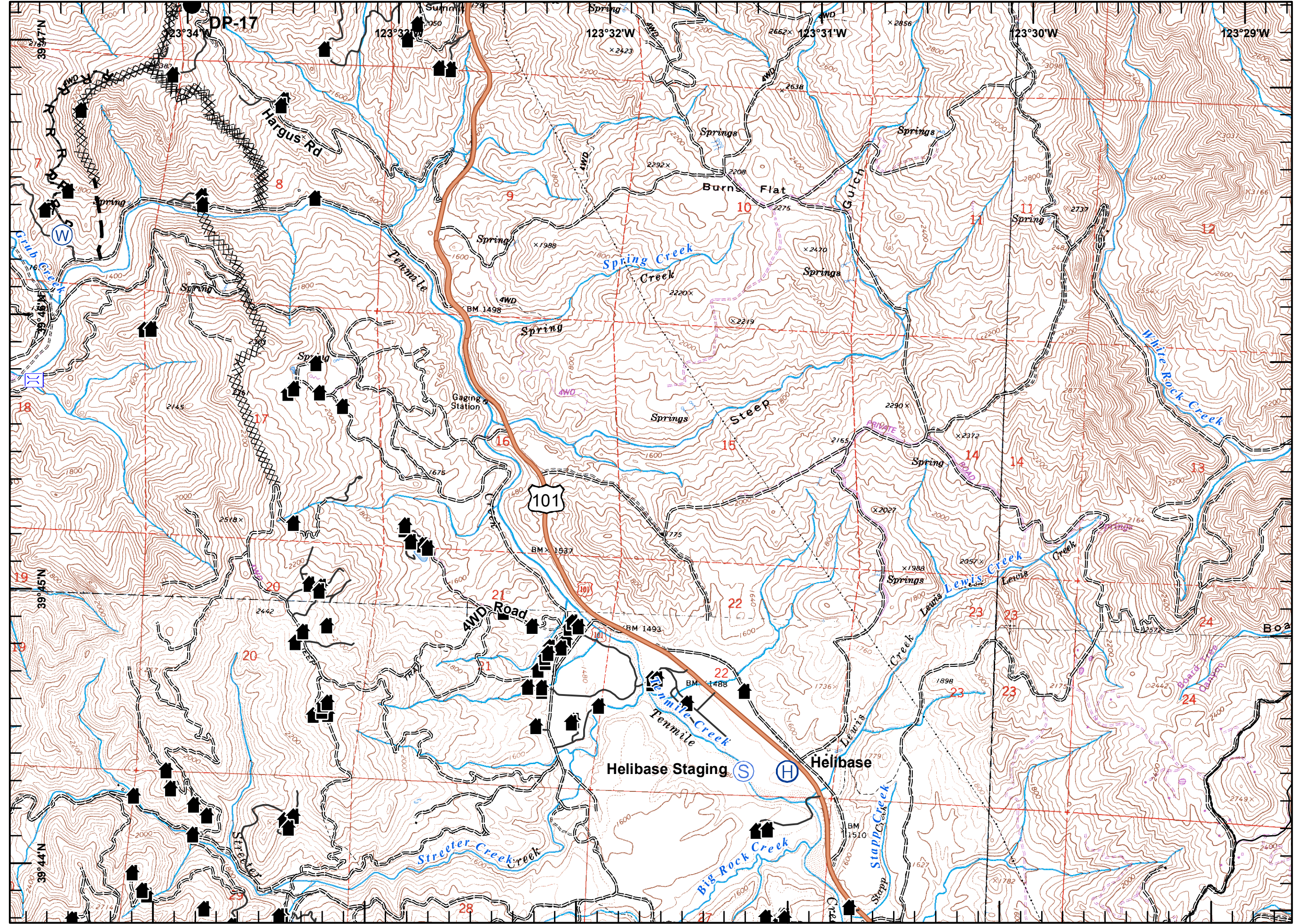




- Branch
- Division
- Aerial Hazard
- Drop Point
- Helispot
- Lookout
- Spot Fire
- Staging Area
- Repeater
- Water Source
- Helibase
- Bridge
- Safety Zone
- Structure/Outbuilding
- Retardant Mud Dip
- Mobile Weather Station
- Incident Command Post
- Uncontrolled Fire Edge
- Completed Dozer Line
- Proposed Dozer Line
- Planned Fire Line
- Road as Fire Line
- Completed Line
- Hand Line


Miles
 0 0.5


Hidalgo
 8/15/2014 20:34hrs



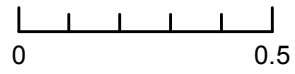


- Branch
- Division
- Aerial Hazard
- Drop Point
- Helispot
- Lookout
- Spot Fire
- Staging Area
- Repeater
- Water Source
- Helibase
- Bridge
- Safety Zone
- Structure/Outbuilding
- Retardant Mud Dip
- Mobile Weather Station
- Incident Command Post
- Uncontrolled Fire Edge
- Completed Dozer Line
- Proposed Dozer Line
- Planned Fire Line
- Road as Fire Line
- Completed Line
- Hand Line

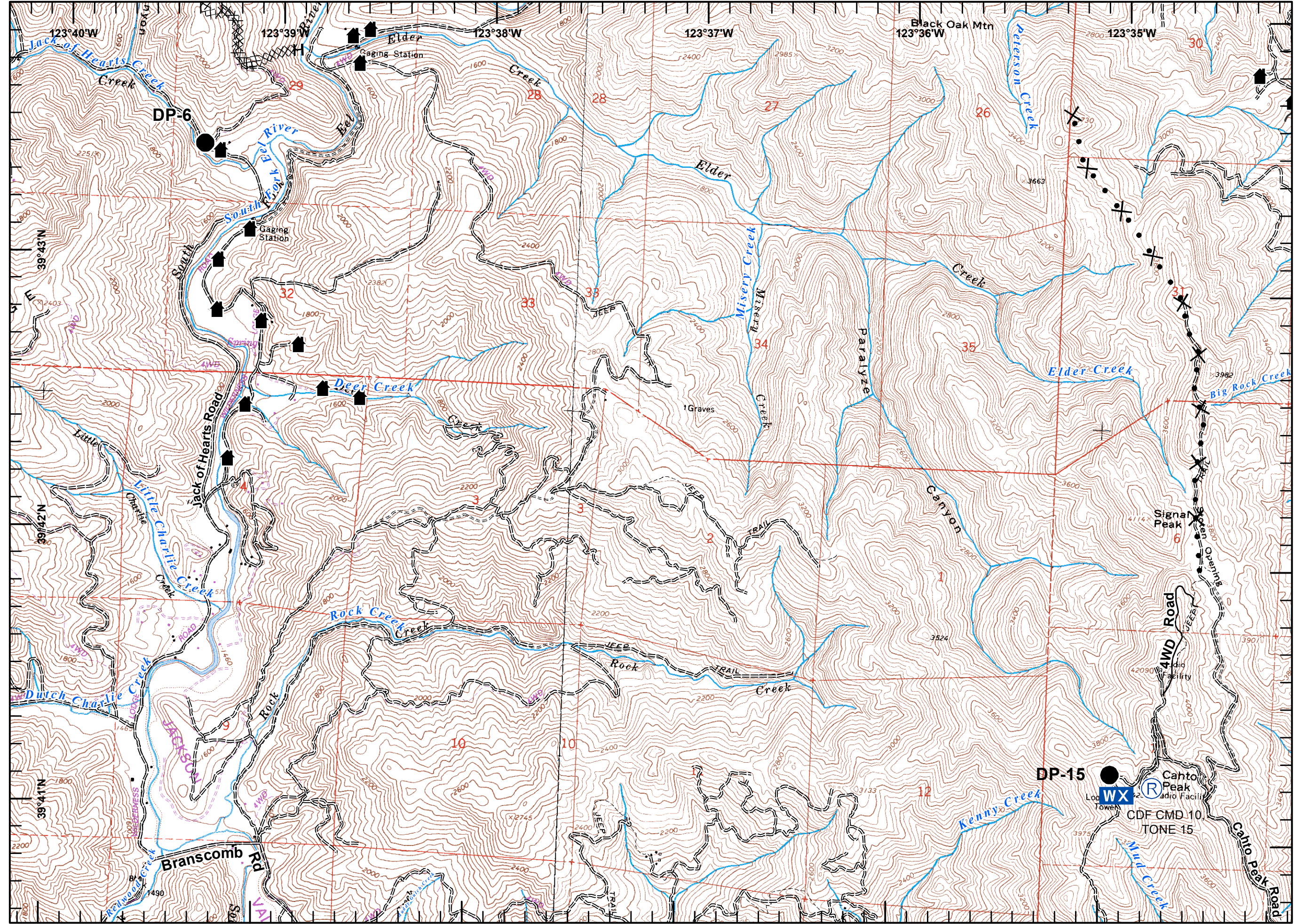




Miles





Hidalgo
 8/15/2014 20:34hrs

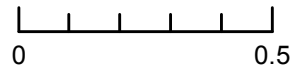




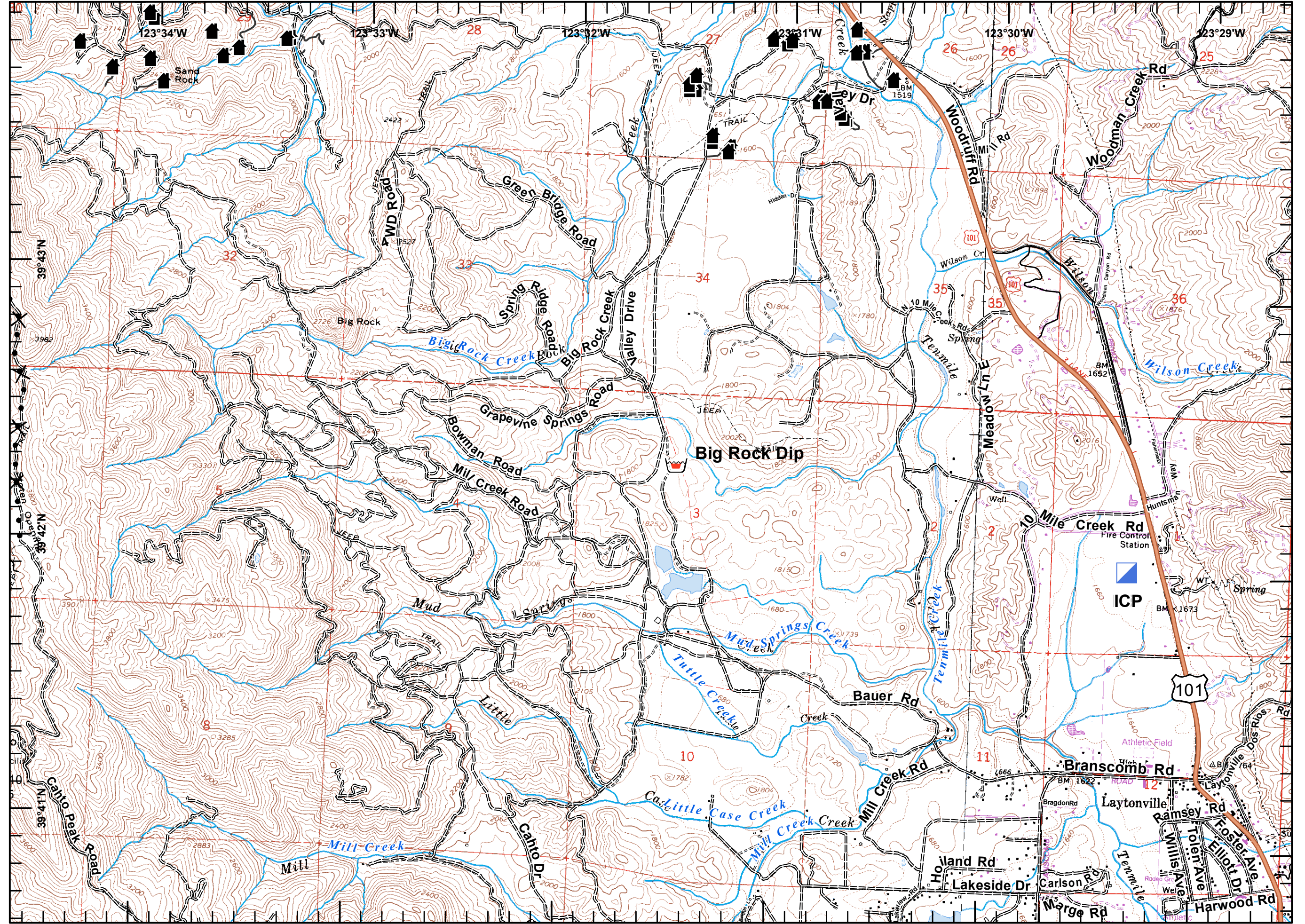
- Branch
- Division
- Aerial Hazard
- Drop Point
- Helispot
- Lookout
- Spot Fire
- Staging Area
- Repeater
- Water Source
- Helibase
- Bridge
- Safety Zone
- Structure/Outbuilding
- Retardant Mud Dip
- Mobile Weather Station
- Incident Command Post
- Uncontrolled Fire Edge
- Completed Dozer Line
- Proposed Dozer Line
- Planned Fire Line
- Road as Fire Line
- Completed Line
- Hand Line

Miles





Hidalgo
8/15/2014 20:34hrs

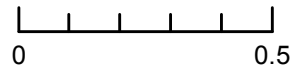




- Branch
- Division
- Aerial Hazard
- Drop Point
- Helispot
- Lookout
- Spot Fire
- Staging Area
- Repeater
- Water Source
- Helibase
- Bridge
- Safety Zone
- Structure/Outbuilding
- Retardant Mud Dip
- Mobile Weather Station
- Incident Command Post
- Uncontrolled Fire Edge
- Completed Dozer Line
- Proposed Dozer Line
- Planned Fire Line
- Road as Fire Line
- Completed Line
- Hand Line

Miles



Hidalgo
8/15/2014 20:34hrs

