

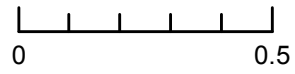




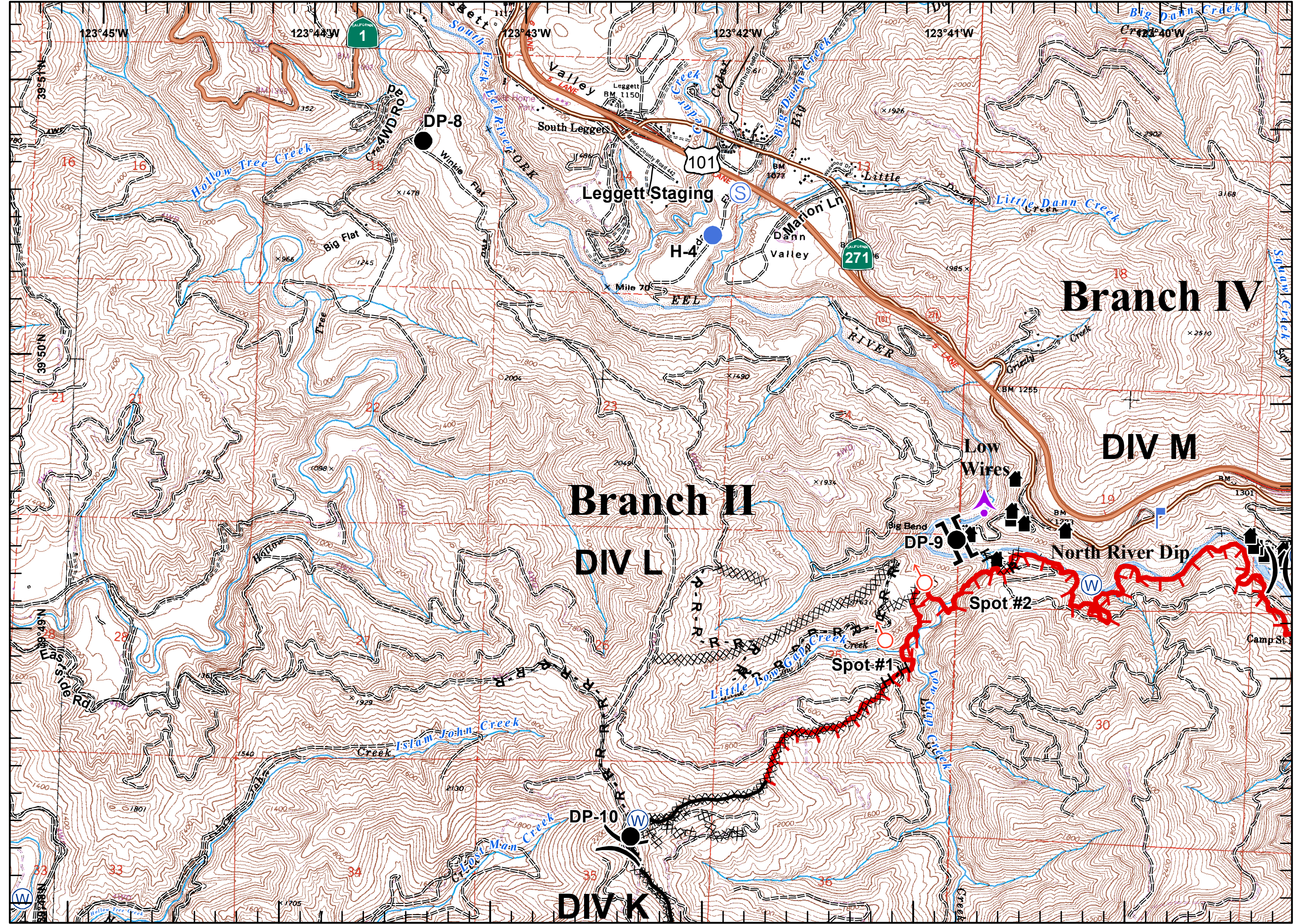
- Branch
- Division
- Aerial Hazard
- Drop Point
- Helispot
- Lookout
- Spot Fire
- Staging Area
- Repeater
- Water Source
- Helibase
- Bridge
- Safety Zone
- Structure/Outbuilding
- Retardant Mud Dip
- Mobile Weather Station
- Incident Command Post
- Uncontrolled Fire Edge
- Completed Dozer Line
- Proposed Dozer Line
- Planned Fire Line
- Road as Fire Line
- Completed Line
- Hand Line

Miles





Hidalgo
8/16/2014 21:01hrs

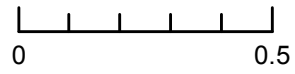




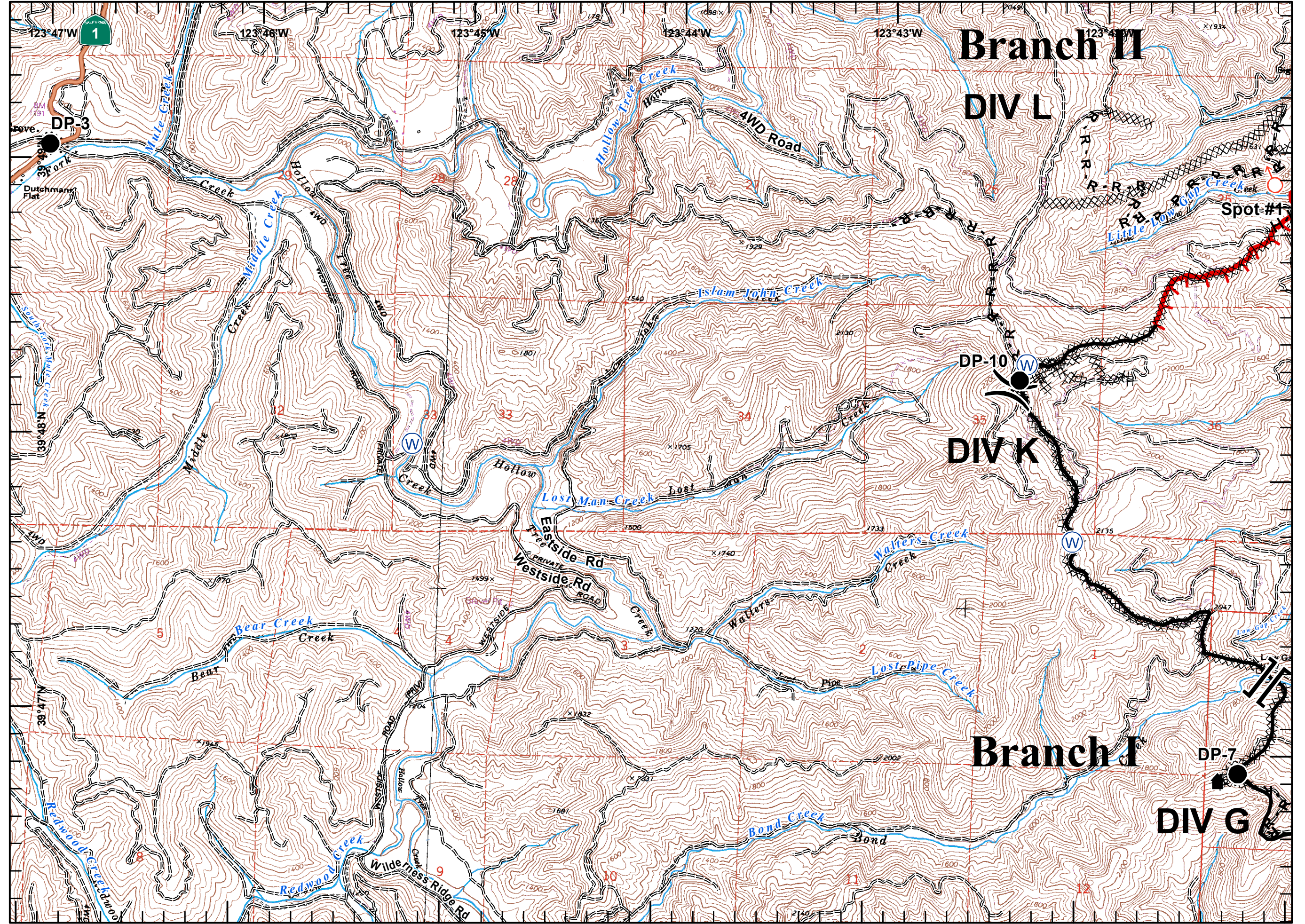
- Branch
- Division
- Aerial Hazard
- Drop Point
- Helispot
- Lookout
- Spot Fire
- Staging Area
- Repeater
- Water Source
- Helibase
- Bridge
- Safety Zone
- Structure/Outbuilding
- Retardant Mud Dip
- Mobile Weather Station
- Incident Command Post
- Uncontrolled Fire Edge
- Completed Dozer Line
- Proposed Dozer Line
- Planned Fire Line
- Road as Fire Line
- Completed Line
- Hand Line

Miles





Hidalgo
 8/16/2014 21:01hrs



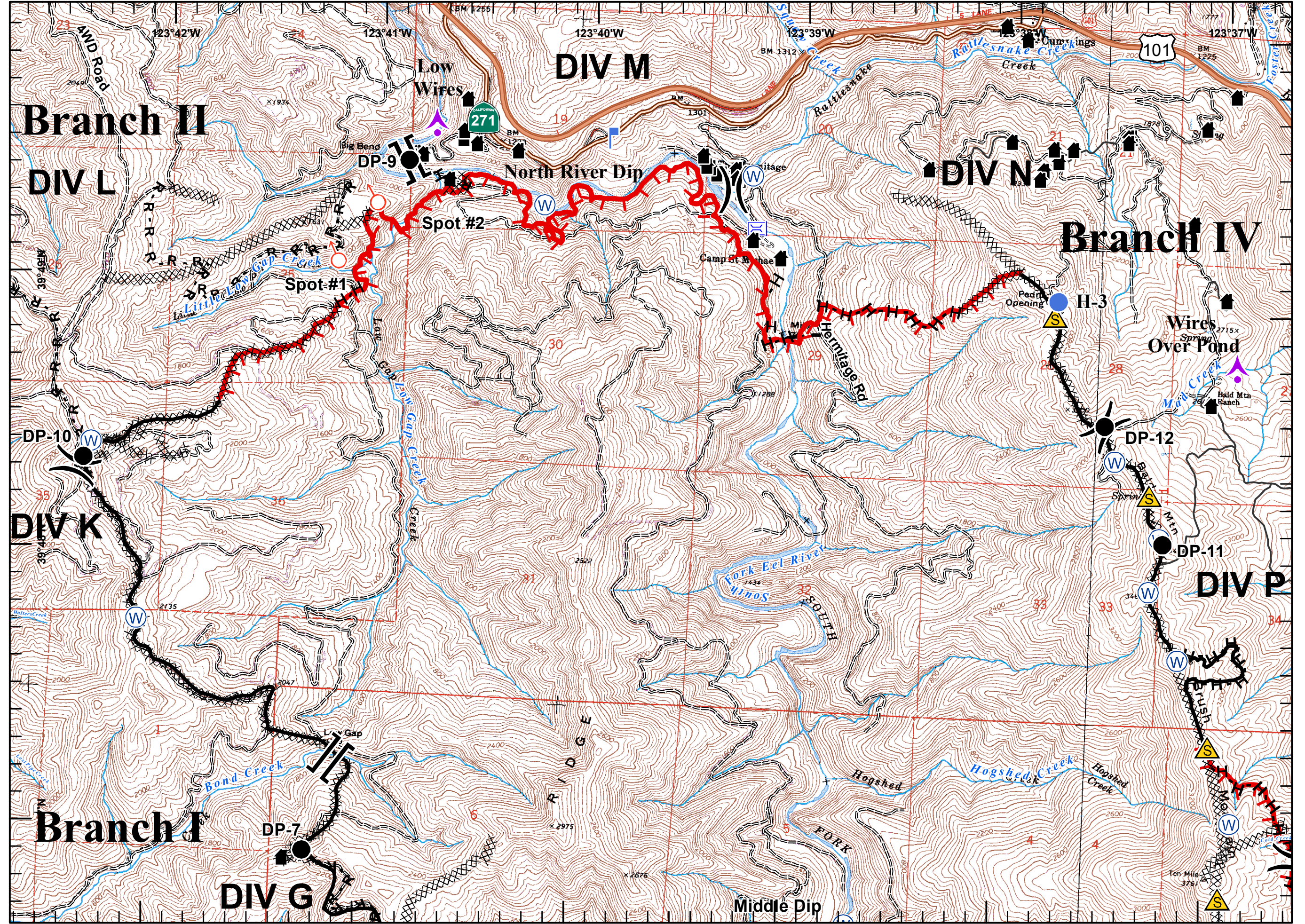


- Branch
- Division
- Aerial Hazard
- Drop Point
- Helispot
- Lookout
- Spot Fire
- Staging Area
- Repeater
- Water Source
- Helibase
- Bridge
- Safety Zone
- Structure/Outbuilding
- Retardant Mud Dip
- Mobile Weather Station
- Incident Command Post
- Uncontrolled Fire Edge
- Completed Dozer Line
- Proposed Dozer Line
- Planned Fire Line
- Road as Fire Line
- Completed Line
- Hand Line



Miles
 0 0.5

Hidalgo
 8/16/2014 21:01hrs

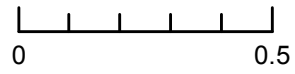




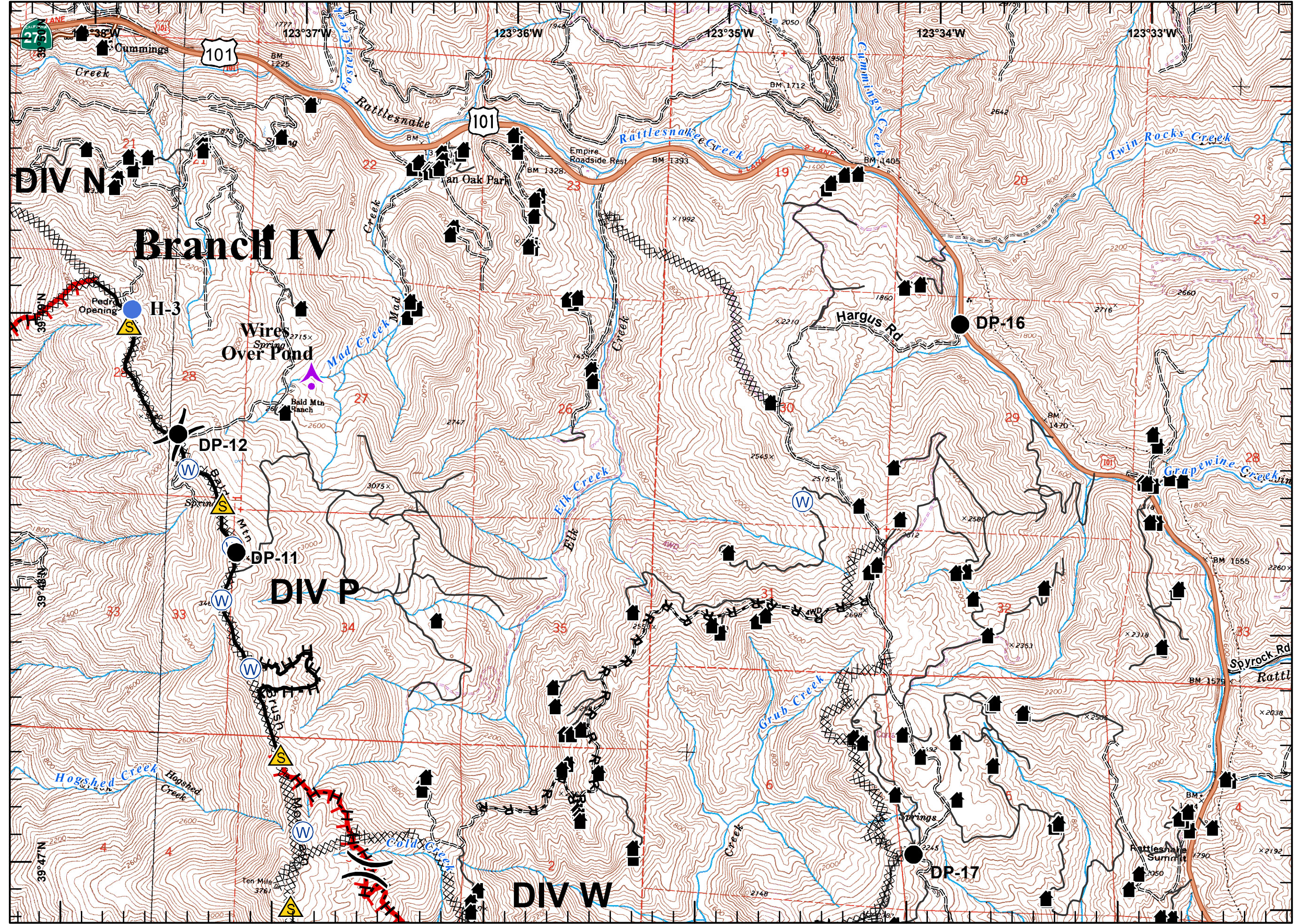
- Branch
- Division
- Aerial Hazard
- Drop Point
- Helispot
- Lookout
- Spot Fire
- Staging Area
- Repeater
- Water Source
- Helibase
- Bridge
- Safety Zone
- Structure/Outbuilding
- Retardant Mud Dip
- Mobile Weather Station
- Incident Command Post
- Uncontrolled Fire Edge
- Completed Dozer Line
- Proposed Dozer Line
- Planned Fire Line
- Road as Fire Line
- Completed Line
- Hand Line

Miles





Hidalgo
8/16/2014 21:02hrs

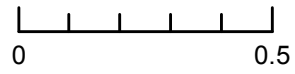




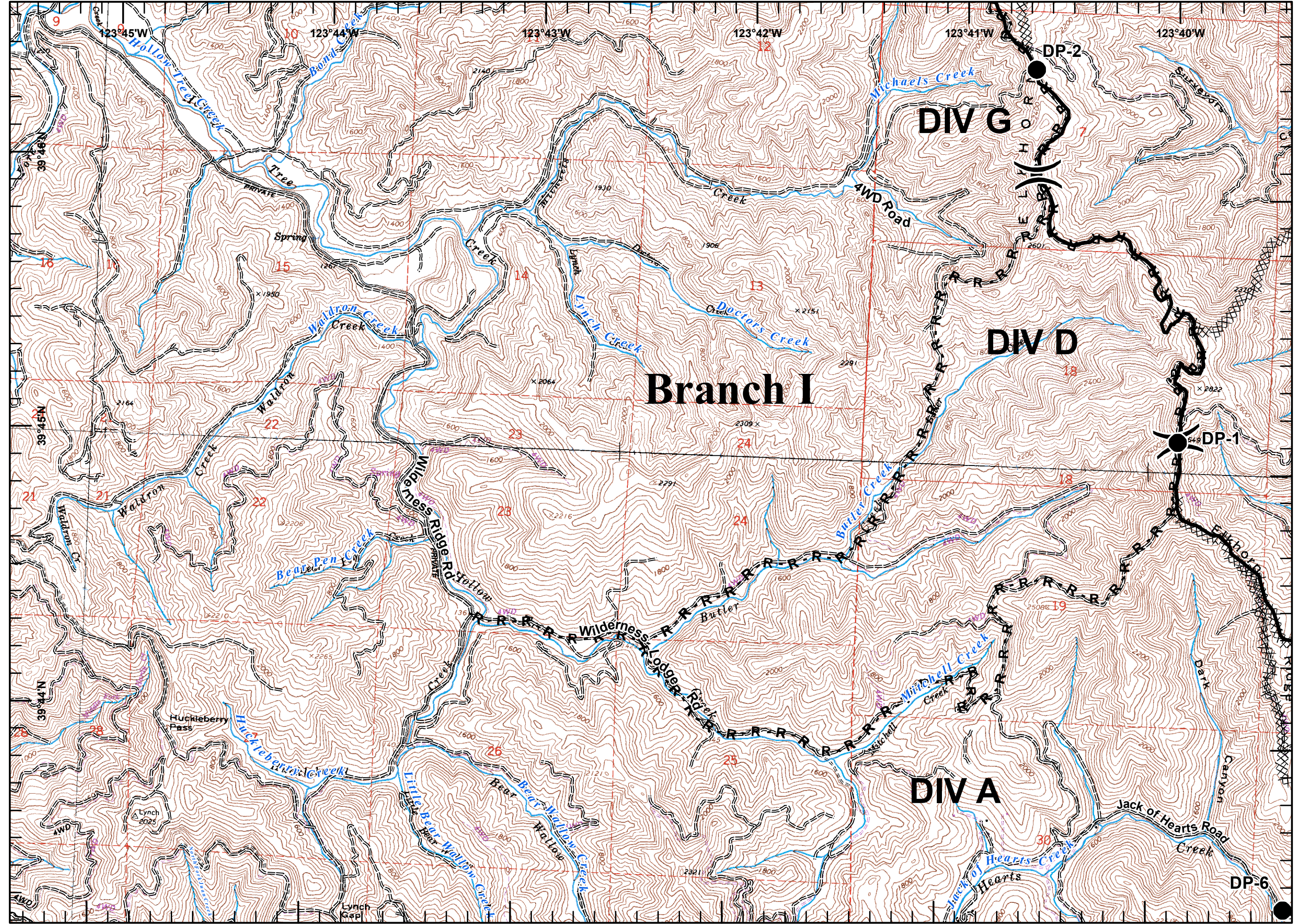
- [[Branch
-)(Division
- ▲ Aerial Hazard
- Drop Point
- Helispot
- └ Lookout
- ♂ Spot Fire
- ⊙ Staging Area
- Ⓜ Repeater
- Ⓜ Water Source
- Ⓜ Helibase
- Ⓜ Bridge
- ▲ Safety Zone
- ▣ Structure/Outbuilding
- ☪ Retardant Mud Dip
- WX Mobile Weather Station
- ▣ Incident Command Post
- └ Uncontrolled Fire Edge
- xxxxx Completed Dozer Line
- ⊗ Proposed Dozer Line
- ▬ Planned Fire Line
- R - Road as Fire Line
- ▬ Completed Line
- H - Hand Line

Miles





Hidalgo
 8/16/2014 21:02hrs

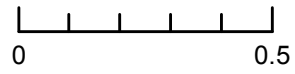




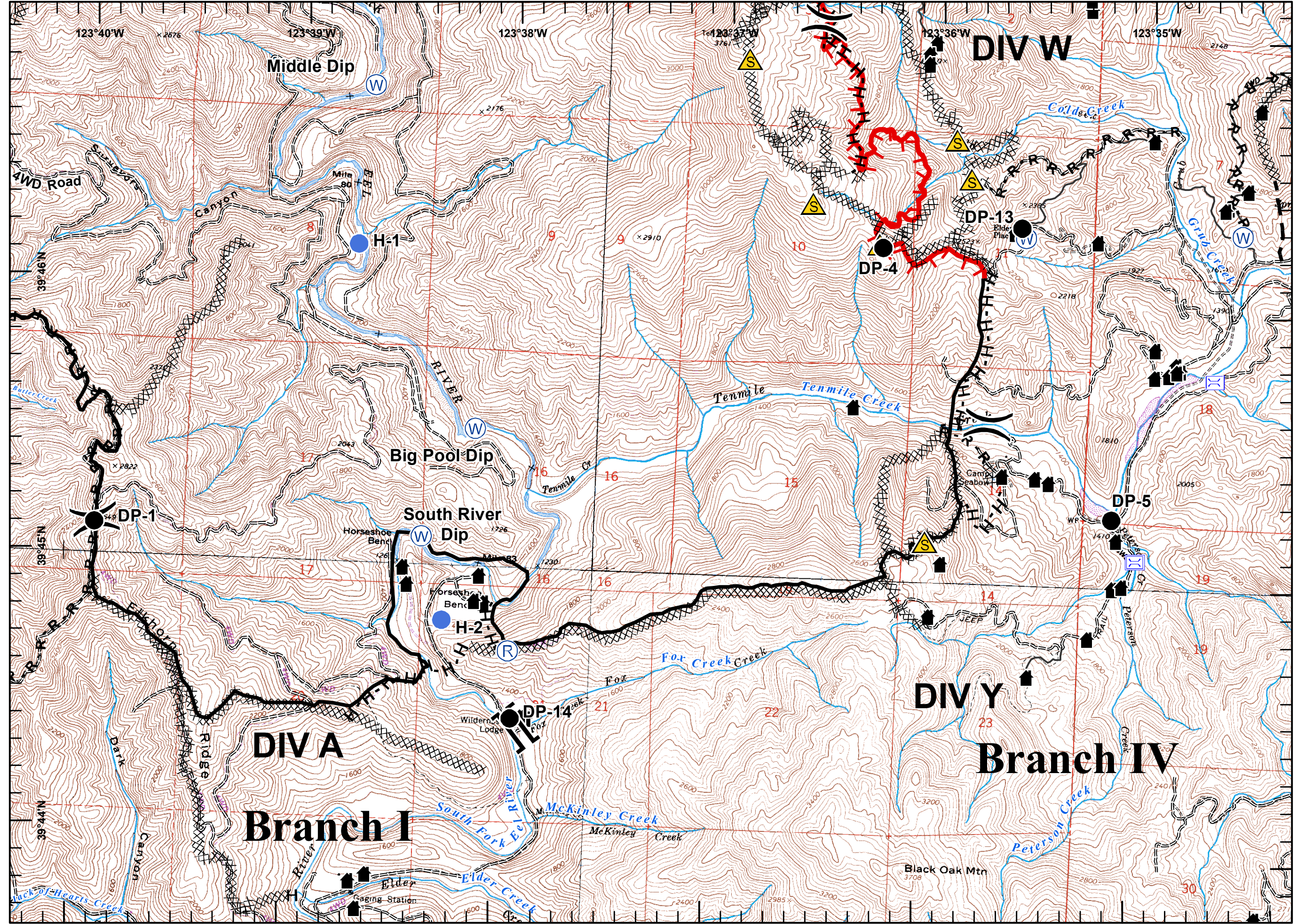
- Branch
- Division
- Aerial Hazard
- Drop Point
- Helispot
- Lookout
- Spot Fire
- Staging Area
- Repeater
- Water Source
- Helibase
- Bridge
- Safety Zone
- Structure/Outbuilding
- Retardant Mud Dip
- Mobile Weather Station
- Incident Command Post
- Uncontrolled Fire Edge
- Completed Dozer Line
- Proposed Dozer Line
- Planned Fire Line
- Road as Fire Line
- Completed Line
- Hand Line

Miles



Hidalgo
 8/16/2014 21:02hrs

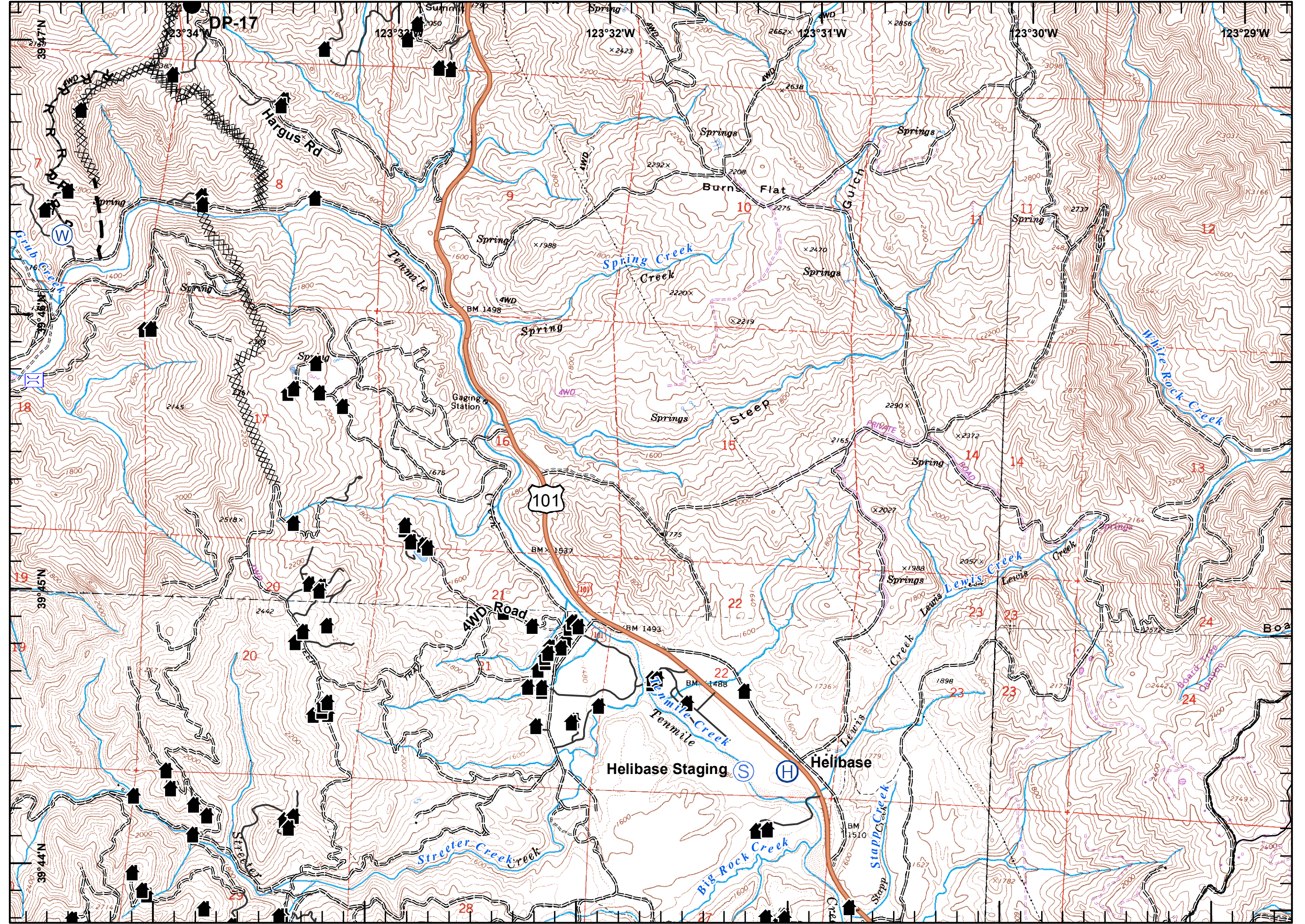




- Branch
- Division
- Aerial Hazard
- Drop Point
- Helispot
- Lookout
- Spot Fire
- Staging Area
- Repeater
- Water Source
- Helibase
- Bridge
- Safety Zone
- Structure/Outbuilding
- Retardant Mud Dip
- Mobile Weather Station
- Incident Command Post
- Uncontrolled Fire Edge
- Completed Dozer Line
- Proposed Dozer Line
- Planned Fire Line
- Road as Fire Line
- Completed Line
- Hand Line


Miles
 0 0.5


Hidalgo
 8/16/2014 21:02hrs



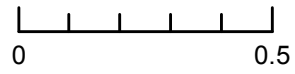


- Branch
- Division
- Aerial Hazard
- Drop Point
- Helispot
- Lookout
- Spot Fire
- Staging Area
- Repeater
- Water Source
- Helibase
- Bridge
- Safety Zone
- Structure/Outbuilding
- Retardant Mud Dip
- Mobile Weather Station
- Incident Command Post
- Uncontrolled Fire Edge
- Completed Dozer Line
- Proposed Dozer Line
- Planned Fire Line
- Road as Fire Line
- Completed Line
- Hand Line

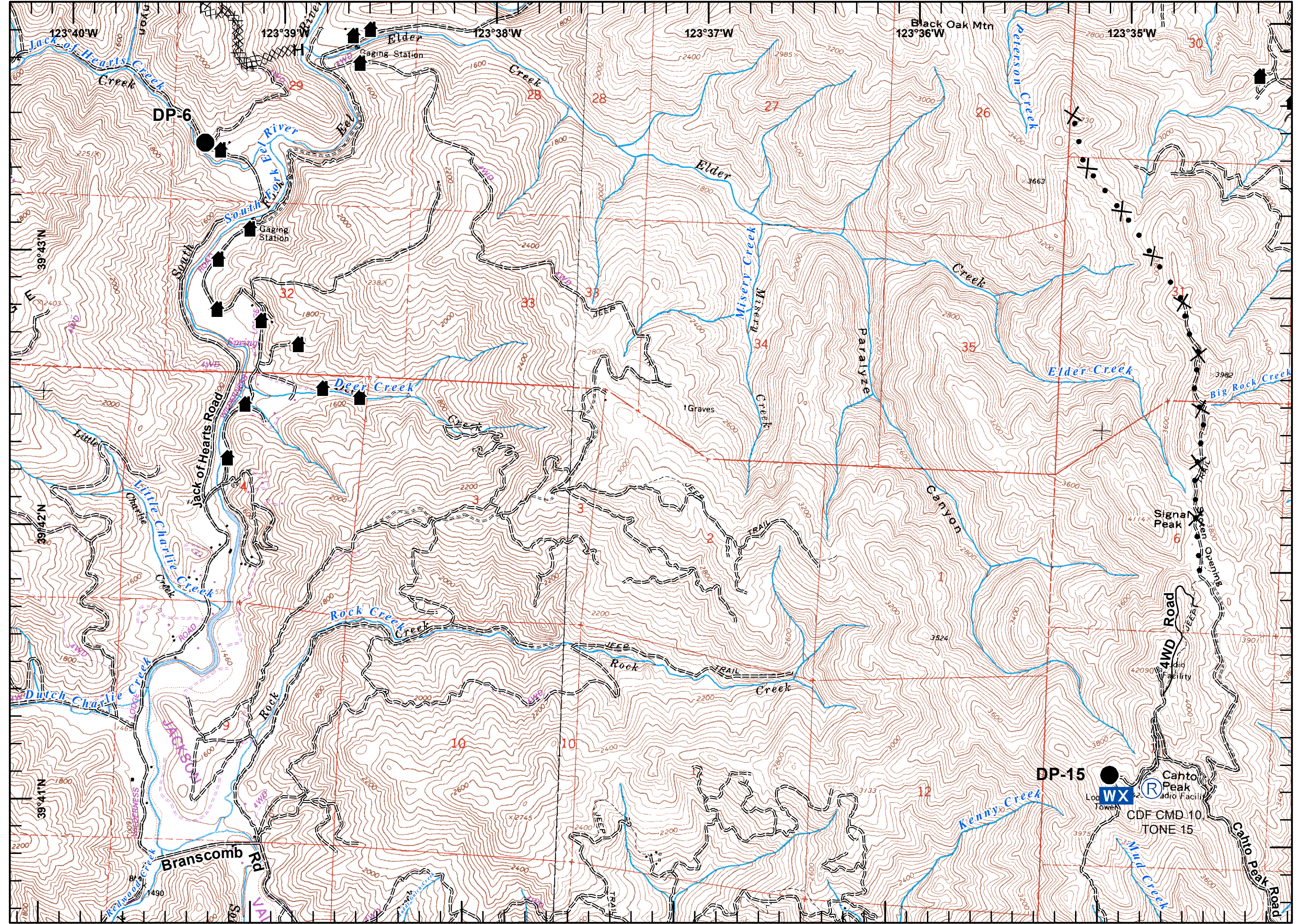




Miles



Hidalgo
8/16/2014 21:02hrs

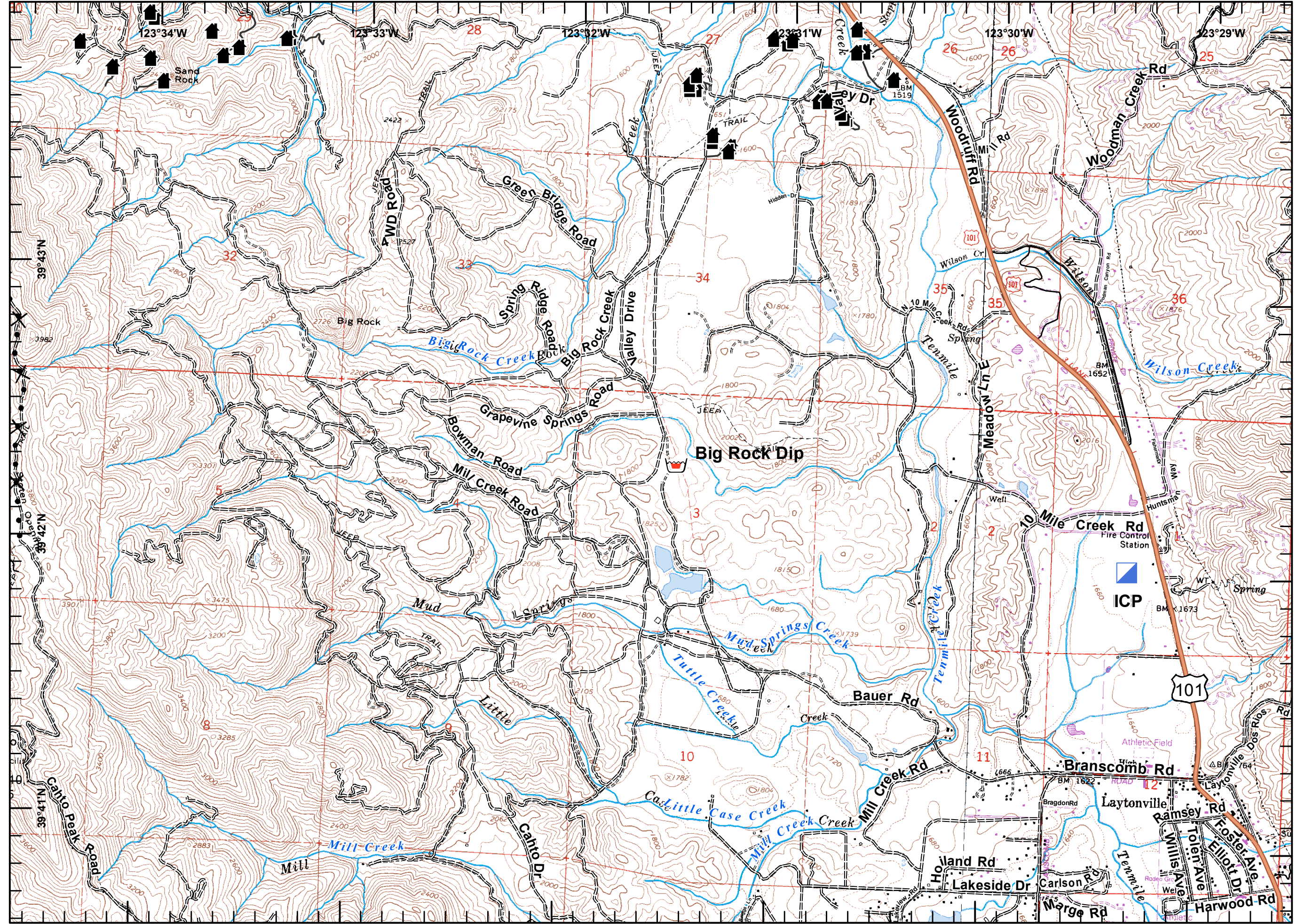




- Branch
- Division
- Aerial Hazard
- Drop Point
- Helispot
- Lookout
- Spot Fire
- Staging Area
- Repeater
- Water Source
- Helibase
- Bridge
- Safety Zone
- Structure/Outbuilding
- Retardant Mud Dip
- Mobile Weather Station
- Incident Command Post
- Uncontrolled Fire Edge
- Completed Dozer Line
- Proposed Dozer Line
- Planned Fire Line
- Road as Fire Line
- Completed Line
- Hand Line



Miles
 0 0.5

Hidalgo
 8/16/2014 21:02hrs

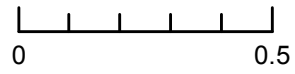




- Branch
- Division
- Aerial Hazard
- Drop Point
- Helispot
- Lookout
- Spot Fire
- Staging Area
- Repeater
- Water Source
- Helibase
- Bridge
- Safety Zone
- Structure/Outbuilding
- Retardant Mud Dip
- Mobile Weather Station
- Incident Command Post
- Uncontrolled Fire Edge
- Completed Dozer Line
- Proposed Dozer Line
- Planned Fire Line
- Road as Fire Line
- Completed Line
- Hand Line

Miles



Hidalgo
8/16/2014 21:02hrs

