



Lodge Complex

CA-MEU-007202

OPERATIONAL PERIOD

Thursday August 14th 0700 to
Friday August 15th 0700



INCIDENT OBJECTIVES	1. INCIDENT NAME Lodge Complex	2. DATE 8/13/14	3. TIME 2000
----------------------------	--	---------------------------	------------------------

4. OPERATIONAL PERIOD (DATE/TIME)
8/14/13 – 8/15/14 0700-0700

- 5. MANAGEMENT OBJECTIVES**
- Provide for and maintain public and firefighter safety by utilizing the incident safety analysis process.
 - Protect the natural and cultural resources values at risk.
 - Be financially responsible for all management and fire suppression tactics.
 - Foster and enhance community, political, and economic relationships.
- 6. GENERAL CONTROL OBJECTIVES**
- Keep fire South of the Big Bend of the Eel River.
 - Keep fire North of Lincoln Ridge.
 - Keep fire West of Elk Creek.
 - Keep fire East of Hollow Tree Creek.
 - Branch III – hold fire within current control lines.

7. WEATHER FORECAST FOR OPERATIONAL PERIOD
A high pressure ridge will build over the area today and will persist through early next week. Moderate warming and drying will occur today with this trend continuing into Saturday. Winds will be terrain driven with generally light ridge top winds.

8. GENERAL SAFETY MESSAGE
Complacency. Don't forget the basics, and maintain situational awareness.
Fatigue may compromise safety.
Accidents can happen during demob.

- 9. Attachments (☑ if attached)**
- | | | | |
|---|---|--|--|
| <input checked="" type="checkbox"/> Organization List (ICS 203) | <input checked="" type="checkbox"/> Medical Plan (ICS 206) | <input type="checkbox"/> Finance | <input checked="" type="checkbox"/> Shift Ticket Example |
| <input checked="" type="checkbox"/> Weather Forecast | <input checked="" type="checkbox"/> Air Operations (ICS 220) | <input checked="" type="checkbox"/> Crew T/S Message | <input checked="" type="checkbox"/> Firing Checklist |
| <input checked="" type="checkbox"/> Fire Behavior Forecast | <input checked="" type="checkbox"/> Assignment List (ICS 204) | <input checked="" type="checkbox"/> Demob Message | <input checked="" type="checkbox"/> Water Usage Plan |
| <input checked="" type="checkbox"/> Safety Message | <input checked="" type="checkbox"/> Travel Map | <input checked="" type="checkbox"/> Training Message | <input checked="" type="checkbox"/> Unit Log 214 |
| <input checked="" type="checkbox"/> Communications Plan (ICS 205) | <input type="checkbox"/> Archaeologist message | <input checked="" type="checkbox"/> Fire Suppression Repair Plan | <input type="checkbox"/> _____ |

10. PREPARED BY (PLANNING SECTION CHIEF) Tim Person (T) 	11. APPROVED BY (INCIDENT COMMANDER) 
--	---

ORGANIZATION ASSIGNMENT LIST

1. Incident Name

Lodge Complex

2. Date

8/13/14

3. Time

2100

4. Operational Period

8/14/14- 8/15/14 0700-0700

Position

Name

5. Incident Commander and Staff

Incident Commander T. Derum / J. Veik (T) / D. Russell (T)

Deputy Phil Matteson

Safety Officer B. Stangeland / J. Piccini (T)

Information Officer Steve Kaufmann

Liaison Officer T. Roberts / J. Rothlein (T) / T. Howard (T) / K. Knopf (T)

6. Agency Representative

Cahto Tribal Chair Richard Smith

Mendocino Sheriff Thomas Allman

Mendocino Unit Norm Brown

CAL OES John Salvate

LAC Steve Olson

DFW Steve White

CDCR Roy Ulatan

BLM Tim Jones

USFS David Austin

7. Planning Section

Chief C. Burch (T) / T. Person (T)

Resources Unit J. Martin / J. Serna / D. Arbgast (T) / P. Pumarejo (T) / J. Pangburn (T)

Situation Unit E. Scovel / D. Fowler (T)

Documentation Unit A. Mendoza/ R. Horvat (T)

Demobilization Unit TJ McGovern / C. Durrance (T) / A. Klem (T)

Technical Specialists

Crew Tech J. Gutierrez / U. Moua / J. Johnson

Fire Suppression Repair Tim Henry

Training R. Karlen / C. Barden (T)

GIS D. Dresselhaus / F. Postler / S. Osenton (T)

FBAN D. Boursier / R. Henault (T)

Archaeologist Chuck Whatford

8. Logistics Section

Chief B. Wood / R. Reynolds (T)

Deputy Jim Crawford

Hired Equipment L. Nielson / N. Daniel (T)

Supply Unit Matt Brandt

Facilities Unit B. Ellis / G. Randar (T)

Ground Support Unit Doug Freeman

Communications Unit Austin Browne

Motel Coordinator C. Miller / T. Brady

Medical Unit D. Nelson / A. Mendoza (T)

Food Unit R. Rivers/ M. Mondragon

9. Operations

Chief M. Brown / (Day Ops) / B. Weiser (Night Ops)

Deputy Scott Lindgren / G. Gonzalez (T)

A. Branch I – Unstaffed

Branch Director

Deputy

Division/Group A / D / G

Division/Group

B. Branch II - Division/Groups

Branch Director Steve Beach

Deputy

Division/Group K / L D. Hunt / J. Jones

Division/Group

C. Branch III – Unstaffed

Branch Director

Deputy

Division/Group

D. Branch IV

Branch Director S. Dakin / G. Money (T)

Deputy

Division/Group M B. Stoffel / S. Fairbanks (T)

Division/Group N E. Smith / P. Billing (T)

Division/Group P J. Russell / M. Carnes (T)

Division/Group W M. Sisneros / J. Underwood (T)

Division/Group Y A. Leonard / S. Zimmermaker (T)

C. Branch Contingency

Branch Director Abdul Ahmad

Division/Group

Division/Group Hargus C. Daly / D. Camp (T)

Division/Group

E. Suppression Repair

Division/Group Duane Franklin

F. Leggett Staging

STAM Kenneth Washington

G. Air Operations Branch

Air Ops Branch Director Mark Gradek

Air Support Group Greg Bradshaw

Heli-Base Manager Tim Perkins

10. Finance Section

Chief Peter Peisch

Deputy Mark Glass

Time Unit Leslie Drexel

Procurement Unit D. Irion / D. Schuchart (T)


Compensation/Claims Unit K. Gullemine / K. Griffin (T)

Cost Unit G. Huang / A. Carpenter (T)

Prepared by (Resource Unit Leader)

Jason Serna


DIVISION ASSIGNMENT LIST			1. Branch II		2. Division/Group K / L		
3. Incident Name Lodge Complex			4. Operational Period Date: 8/14-8/15 Time: 0700-0700				
5. Operations Personnel							
Operations Chief		M. Brown (Day Ops) / B. Weiser (Night Ops)		Division/Group Supervisor		D. Hunt / J. Jones (T)	
Branch Director		Steve Beach		Branch Safety		Brian Richey (T)	
6. Resources Assigned this Period							
Strike Team/Task Force/ Resource Designator	Leader	Number Persons	Drop Off PT./Time	Pick Up PT./Time	On Line	Off Line	
STC XSD 6440C	Brad Rushing	18	DP-9 0800	0700			
STC XSD 6437C	Jon Canavan	22	DP-9 0800	0700			
STG SLU 9397G	Joe Barraza	33	DP-9 0800	0700			
STG FKU 9474G	Ed Clayton	33	DP-9 0800	0700			
STG TCU 9480G	Ken Kanawyer	38	DP-9 0800	0700			
W/T PVT E-44	Mickey Settlemire	2	DP-9 0800	0700			
W/T PVT E-459	Dennis Forni	2	DP-9 0800	0700			
EMTP	Chris Gilbert	1	DP-9 0800	0700			
FEMT	Keith Albrecht	1	DP-9 0800	0700			
FALC O-382**	Frank Fales	2	DP-9 0800	1900			
7. Control Operations Mop up 300 feet. Widen and put in hoselay in DIV L from DP-9 to DIV M. Back haul trash and hose to Incident Base.							
8. Special Instructions * DIVS shall ensure an accountability process for assigned personnel, and ensure that all assigned personnel receive a thorough briefing. ** 12 hour resource. *** DIVS can use FOBS personnel to perform as Lookouts and "Human Repeaters." Do not take any water from the Incident Base. Take water from only approved water sources and hydrants. STC XSD 6440C and STC XSD 6437C are ALS.							
9. Division/Group Communication Summary							
Function	Frequency	System	Channel	Function	Frequency	System	Channel
Command	RX 151.1900 TX 159.2250 Tone 13 / 15	King NIFC	1 / 2 CDF C10	Line Medical	RX/TX 156.0750	King NIFC	15 CALCORD
Tactical Div/Group	RX/TX 154.2725	King NIFC	4 VFIRE 24	Air to Ground	RX/TX 159.4500	King NIFC	7 CDF T23
Prepared by (Resource Unit Ldr.) Jason Serna		Approved by (Planning Sect. Ch.) Tim Person (T) <i>[Signature]</i>			Date 8/13/14		Time 2100

DIVISION ASSIGNMENT LIST			1. Branch IV		2. Division/Group M			
3. Incident Name Lodge Complex			4. Operational Period Date: 8/14-8/15 Time: 0700-0700					
5. Operations Personnel								
Operations Chief		M. Brown (Day Ops) / B. Weiser (Night Ops)		Division/Group Supervisor		B. Stoffel / S. Fairbanks (T)		
Branch Director		S. Dakin / G. Money (T)		Division Safety		M. Waters / J. Brooks (T)		
6. Resources Assigned this Period								
Strike Team/Task Force/ Resource Designator		Leader	Number Persons	Drop Off PT./Time		Pick Up PT./Time	On Line	Off Line
STC XBO 6230C		Jim Topoleski	20	DP-9 0800		0700		
STC XSD 6470C		Bill Frederick	20	DP-9 0800		0700		
STF XSO 2350F		Steve Meisenheimer	12	DP-9 0800		0700		
STG TGU 9255G		Joey Howard	33	DP-9 0800		0700		
CRW ANF RR**		Harry Oh	20	DP-9 0800		1900		
CRW CDF CNG 2		Jim Gray	20	DP-9 0800		0700		
W/T PVT E-43		Fred Lutz	2	DP-9 0800		0700		
W/T PVT E-107		Toby Adams	2	DP-9 0800		0700		
W/T PVT E-161		David Burgess	2	DP-9 0800		0700		
W/T PVT E-366		Clarence Enlow	2	DP-9 0800		0700		
EMTP / FEMT		R. Durrell / B. Cogburn	2	DP-9 0800		0700		
FALC O-273**		Jesse Gonzalez	1	DP-9 0800		1900		
7. Control Operations Continue to hold and prep line from DIV L/M break to DIV M/N break. Back haul trash and hose to Incident Base.								
8. Special Instructions * DIVS shall ensure an accountability process for assigned personnel, and ensure that all assigned personnel receive a thorough briefing. * All resources entering the Incident from Hwy 101, only enter using South Bound Hwy 101. ** 12 hour resource. *** DIVS can use FOBS personnel to perform as Lookouts and "Human Repeaters." Do not take any water from the Incident Base. Take water from only approved water sources and hydrants. STC XBO 6230C (DIV M), STF XSO 2350F (DIV M), STC XSD 6416C (DIV W) are ALS.								
9. Division/Group Communication Summary								
Function	Frequency	System	Channel		Function	Frequency	System	Channel
Command	RX 151.1900 TX 159.2250 Tone 13 / 15	King NIFC	1 / 2 CDF C10		Line Medical	RX/TX 156.0750	King NIFC	15 CALCORD
Tactical Div/Group	RX/TX 154.3025	King NIFC	6 VFIRE 26		Air to Ground	RX/TX 159.4500	King NIFC	7 CDF T23
Prepared by (Resource Unit Ldr.) Daniel Arbgast (T)			Approved by (Planning Sect. Ch.) Tim Person (T) 			Date 8/13/14		Time 2000


DIVISION ASSIGNMENT LIST			1. Branch IV		2. Division/Group N		
3. Incident Name Lodge Complex			4. Operational Period Date: 8/14-8/15 Time: 0700-0700				
5. Operations Personnel							
Operations Chief		M. Brown (Day Ops) / B. Weiser (Night Ops)		Division/Group Supervisor		E. Smith / P. Billing (T)	
Branch Director		S. Dakin / G. Money (T)		Division Safety		P. Selegue / L. Spelman (T)	
6. Resources Assigned this Period							
Strike Team/Task Force/ Resource Designator	Leader	Number Persons	Drop Off PT./Time	Pick Up PT./Time	On Line	Off Line	
STC XMY 2176C	Phil Vanderhost	21	DP-12 0800	0700			
STG MEU 9111G	Brian Bishop	32	DP-12 0800	0700			
CRW MRN TAMA	Tim Walsh	14	DP-12 0800	0700			
CRW OHS 2**	Ronald Carter	20	DP-12 0800	1900			
CRW SQF 1**	Aaron Kendall	22	DP-12 0800	1900			
CRW CDF CNG 1	Burt Byers	20	DP-12 0800	0700			
DOZ PVT E-95	Stanford Brotton	2	DP-12 0800	0700			
DOZ PVT E-96	Brad Ingram	2	DP-12 0800	0700			
DOZ PVT E-97	Frank Kester	2	DP-12 0800	0700			
W/T PVT E-153	Shawn Mitchell	2	DP-12 0800	0700			
W/T PVT E-158	Zeb George	2	DP-12 0800	0700			
HEQB	Curtis Nagel	1	DP-12 0800	0700			
FALC O-85**	Dave Kahan	1	DP-12 0800	1900			
7. Control Operations Hold line and mop up 100ft. From the DIV M/N break to the DIV N/P break. Back haul trash and hose to Incident Base.							
8. Special Instructions * DIVS shall ensure an accountability process for assigned personnel, and ensure that all assigned personnel receive a thorough briefing. * All resources entering the Incident from Hwy 101, only enter using South Bound Hwy 101. ** 12 hour resource. *** DIVS can use FOBS personnel to perform as Lookouts and "Human Repeaters." Do not take any water from the Incident Base. Take water from only approved water sources and hydrants. STC XBO 6230C (DIV M), STF XSO 2350F (DIV M), STC XSD 6416C (DIV W) are ALS.							
9. Division/Group Communication Summary							
Function	Frequency	System	Channel	Function	Frequency	System	Channel
Command	RX 151.1900 TX 159.2250 Tone 13 / 15	King NIFC	1 / 2 CDF C10	Line Medical	RX/TX 156.0750	King NIFC	15 CALCORD
Tactical Div/Group	RX/TX 159.3750	King NIFC	8 CDF T20	Air to Ground	RX/TX 159.4500	King NIFC	7 CDF T23
Prepared by (Resource Unit Ldr.) Daniel Arbgast (T)		Approved by (Planning Sect. Ch.) Tim Person (T) <i>[Signature]</i>		Date 8/13/14		Time 2000	

DIVISION ASSIGNMENT LIST			1. Branch IV		2. Division/Group P Page 1 of 2		
3. Incident Name Lodge Complex			4. Operational Period Date: 8/14-8/15 Time: 0700-0700				
5. Operations Personnel							
Operations Chief		M. Brown (Day Ops) / B. Weiser (Night Ops)		Division/Group Supervisor		J. Russell / M. Carnes (T)	
Branch Director		S. Dakin / G. Money (T)		Division Safety		Sean Perkins	
6. Resources Assigned this Period							
Strike Team/Task Force/ Resource Designator	Leader		Number Persons	Drop Off PT./Time	Pick Up PT./Time	On Line	Off Line
STC XCO 3025C	Jeff Gilbert		16	DP-11 0800	0700		
STC XSA 4156C	Kendon Kuykendall		22	DP-11 0800	0700		
STC SCU 9160C	Tim Main		18	DP-11 0800	0700		
STG BEU 9488G	Michael Shores		37	DP-11 0800	0700		
DOZ PVT E-90	Bob Luiz		2	DP-11 0800	0700		
DOZ PVT E-190	Neal Thomas		2	DP-11 0800	0700		
DOZ PVT E-245	Pat Medeiros		2	DP-11 0800	0700		
W/T PVT E-135	Bob Fortner		2	DP-11 0800	0700		
W/T PVT E-159	Rick Rogers		2	DP-11 0800	0700		
W/T PVT E-160	George Arellano		2	DP-11 0800	0700		
W/T PVT E-361	Steve Raddigan		2	DP-11 0800	0700		
W/T PVT E-363	Drew Mcallister		2	DP-11 0800	0700		
7. Control Operations Hold line and mop up 100ft. From the DIV N/P break to the DIV PW break. Back haul trash and hose to Incident Base.							
8. Special Instructions * DIVS shall ensure an accountability process for assigned personnel, and ensure that all assigned personnel receive a thorough briefing. * All resources entering the Incident from Hwy 101, only enter using South Bound Hwy 101. *** DIVS can use FOBS personnel to perform as Lookouts and "Human Repeaters." Do not take any water from the Incident Base. Take water from only approved water sources and hydrants. STC XBO 6230C (DIV M), STF XSO 2350F (DIV M), STC XSD 6416C (DIV W) are ALS.							
9. Division/Group Communication Summary							
Function	Frequency	System	Channel	Function	Frequency	System	Channel
Command	RX 151.1900 TX 159.2250 Tone 13 / 15	King NIFC	1 / 2 CDF C10	Line Medical	RX/TX 156.0750	King NIFC	15 CALCORD
Tactical Div/Group	RX/TX 151.1375	King NIFC	9 VTAC 11	Air to Ground	RX/TX 159.4500	King NIFC	7 CDF T23
Prepared by (Resource Unit Ldr.) Daniel Arbgast (T)		Approved by (Planning Sect. Ch.) Tim Person (T) <i>[Signature]</i>		Date 8/13/14		Time 2000	


8

DIVISION ASSIGNMENT LIST			1. Branch IV		2. Division/Group P Page 2 of 2		
3. Incident Name Lodge Complex			4. Operational Period Date: 8/14-8/15 Time: 0700-0700				
5. Operations Personnel							
Operations Chief		M. Brown (Day Ops) / B. Weiser (Night Ops)		Division/Group Supervisor		J. Russell / M. Carnes (T)	
Branch Director		S. Dakin / G. Money (T)		Division Safety		Sean Perkins	
6. Resources Assigned this Period							
Strike Team/Task Force/ Resource Designator		Leader		Number Persons	Drop Off PT./Time	Pick Up PT./Time	On Line Off Line
W/T PVT E-453		Jeff Ackerman		2	DP-11 0800	0700	
W/T PVT E-454		Albert Julian		2	DP-11 0800	0700	
EMTP		Tom Moon		1	DP-11 0800	0700	
FEMT		Justin Acselrod		1	DP-11 0800	0700	
HEQB		Carl Pearson		1	DP-11 0800	0700	
FALC O-384**		Jack Rosebush		1	DP-11 0800	1900	
7. Control Operations Hold line and mop up 100ft. From the DIV N/P break to the DIV P/W break. Back haul trash and hose to Incident Base.							
8. Special Instructions * DIVS shall ensure an accountability process for assigned personnel, and ensure that all assigned personnel receive a thorough briefing. * All resources entering the Incident from Hwy 101, only enter using South Bound Hwy 101. ** 12 hour resource. *** DIVS can use FOBS personnel to perform as Lookouts and "Human Repeaters." Do not take any water from the Incident Base. Take water from only approved water sources and hydrants. STC XBO 6230C (DIV M), STF XSO 2350F (DIV M), STC XSD 6416C (DIV W) are ALS.							
9. Division/Group Communication Summary							
Function	Frequency	System	Channel	Function	Frequency	System	Channel
Command	RX 151.1900 TX 159.2250 Tone 13 / 15	King NIFC	1 / 2 CDF C10	Line Medical	RX/TX 156.0750	King NIFC	15 CALCORD
Tactical Div/Group	RX/TX 151.1375	King NIFC	9 VTAC 11	Air to Ground	RX/TX 159.4500	King NIFC	7 CDF T23
Prepared by (Resource Unit Ldr.) Daniel Arbogast (T)			Approved by (Planning Sect. Ch.) Tim Person (T) 		Date 8/13/14		Time 2000

9

DIVISION ASSIGNMENT LIST			1. Branch IV		2. Division/Group W Page 1 of 2			
3. Incident Name Lodge Complex			4. Operational Period Date: 8/14-8/15 Time: 0700-0700					
5. Operations Personnel								
Operations Chief		M. Brown (Day Ops) / B. Weiser (Night Ops)		Division/Group Supervisor		M. Sisneros / J. Underwood (T)		
Branch Director		S. Dakin / G. Money (T)		Division Safety		K. Margiott / J. Sena (T)		
6. Resources Assigned this Period								
Strike Team/Task Force/ Resource Designator	Leader		Number Persons	Drop Off PT./Time	Pick Up PT./Time	On Line	Off Line	
STC XSD 6416C	Bill Kogerman		17	DP-13 0800	0700			
STC BEU 9460C	Baraka Carter		17	DP-13 0800	0700			
STG SHU 9244G	Jan Smutz		35	DP-13 0800	0700			
STG MVU 9376G	Richard Wierenga		32	DP-13 0800	0700			
STG TCU 9481G	Sam Cousins		35	DP-13 0800	0700			
STG SHU 9241G	Dennis Lange		30	DP-13 0800	0700			
CRW BDF TAHQ**	Robert Haft		19	DP-13 0800	1900			
DOZ PVT E-239	Sam Blanton		2	DP-13 0800	0700			
W/T PVT E-457	Paul Rain		2	DP-13 0800	0700			
W/T PVT E-458	Bob Ummels		2	DP-13 0800	0700			
7. Control Operations Complete hand and dozer line around spot fires. Plumb and mop up 200ft. Back haul trash and hose to Incident Base.								
8. Special Instructions * DIVS shall ensure an accountability process for assigned personnel, and ensure that all assigned personnel receive a thorough briefing. * All resources entering the Incident from Hwy 101, only enter using South Bound Hwy 101. ** 12 hour resource. *** DIVS can use FOBS personnel to perform as Lookouts and "Human Repeaters." Do not take any water from the Incident Base. Take water from only approved water sources and hydrants. STC XBO 6230C (DIV M), STF XSO 2350F (DIV M), STC XSD 6416C (DIV W) are ALS.								
9. Division/Group Communication Summary								
Function	Frequency	System	Channel		Function	Frequency	System	Channel
Command	RX 151.1900 TX 159.2250 Tone 13 / 15	King NIFC	1 / 2 CDF C10		Line Medical	RX/TX 156.0750	King NIFC	15 CALCORD
Tactical Div/Group	RX/TX 154.4525	King NIFC	10 VTAC 12		Air to Ground	RX/TX 159.4500	King NIFC	7 CDF T23
Prepared by (Resource Unit Ldr.) Daniel Arbgast (T)			Approved by (Planning Sect. Ch.) Tim Person (T) 			Date 8/13/14		Time 2000

10

DIVISION ASSIGNMENT LIST			1. Branch IV		2. Division/Group W Page 2 of 2		
3. Incident Name Lodge Complex			4. Operational Period Date: 8/14-8/15 Time: 0700-0700				
5. Operations Personnel							
Operations Chief		M. Brown (Day Ops) / B. Weiser (Night Ops)		Division/Group Supervisor		M. Sisneros / J. Underwood (T)	
Branch Director		S. Dakin / G. Money (T)		Division Safety		K. Margiott / J. Sena (T)	
6. Resources Assigned this Period							
Strike Team/Task Force/ Resource Designator	Leader		Number Persons	Drop Off PT./Time	Pick Up PT./Time	On Line	Off Line
EXC PVT E-116**	Larry Crunkilton		1	DP-13 0800	1900		
EXC PVT E-354**	Doug Parmeter		1	DP-13 0800	1900		
EMTP	Dan Mora		1	DP-13 0800	0700		
FEMT	Daniel Beeson		1	DP-13 0800	0700		
HEQB	C. Eicher / K. Kailey (T)		1	DP-13 0800	0700		
T/F LEADER	Kieth Swope		1	DP-13 0800	1900		
FELB**	Mike Braydis		1	DP-13 0800	0700		
FALC O-356**	Roberts Tree		1	DP-13 0800	1900		
7. Control Operations Complete hand and dozer line around spot fires. Plumb and mop up 200ft. Back haul trash and hose to Incident Base.							
8. Special Instructions * DIVS shall ensure an accountability process for assigned personnel, and ensure that all assigned personnel receive a thorough briefing. * All resources entering the Incident from Hwy 101, only enter using South Bound Hwy 101. ** 12 hour resource. *** DIVS can use FOBS personnel to perform as Lookouts and "Human Repeaters." Do not take any water from the Incident Base. Take water from only approved water sources and hydrants. STC XBO 6230C (DIV M), STF XSO 2350F (DIV M), STC XSD 6416C (DIV W) are ALS.							
9. Division/Group Communication Summary							
Function	Frequency	System	Channel	Function	Frequency	System	Channel
Command	RX 151.1900 TX 159.2250 Tone 13 / 15	King NIFC	1 / 2 CDF C10	Line Medical	RX/TX 156.0750	King NIFC	15 CALCORD
Tactical Div/Group	RX/TX 154.4525	King NIFC	10 VTAC 12	Air to Ground	RX/TX 159.4500	King NIFC	7 CDF T23
Prepared by (Resource Unit Ldr.) Daniel Arbgast (T)		Approved by (Planning Sect. Ch.) Tim Person (T) 			Date 8/13/14		Time 2000

DIVISION ASSIGNMENT LIST			1. Branch IV		2. Division/Group Y		
3. Incident Name Lodge Complex			4. Operational Period Date: 8/14-8/15 Time: 0700-0700				
5. Operations Personnel							
Operations Chief	M. Brown (Day Ops) / B. Weiser (Night Ops)		Division/Group Supervisor		A. Leonard / S. Zimmermaker (T)		
Branch Director		S. Dakin / G. Money (T)		Branch Safety			
6. Resources Assigned this Period							
Strike Team/Task Force/ Resource Designator	Leader		Number Persons	Drop Off PT./Time	Pick Up PT./Time	On Line	
STC MRN 9150C	Todd Overshiner		18	DP-5 0800	0700		
STF KCF 5051F	Sal Gutierrez		13	DP-5 0800	0700		
STG MEU 9112G	Mike Orme		35	DP-5 0800	0700		
CRW CDF CNG Crew 3	Sean Sunahara		20	DP-5 0800	0700		
DOZ PVT E-240	Bill Shannon		2	DP-5 0800	0700		
DOZ PVT E-244	Kevin Ring		2	DP-5 0800	0700		
W/T PVT E-75	Bobby Palva		2	DP-5 0800	0700		
EMTP	Robert Reed		1	DP-5 0800	0700		
FEMT	Daniel Potter		1	DP-5 0800	0700		
HEQB	Kevin Molloy		1	DP-5 0800	0700		
7. Control Operations Monitor structures. Hold line and mop up 200 feet. Back haul trash and hose to Incident Base.							
8. Special Instructions * DIVS shall ensure an accountability process for assigned personnel, and ensure that all assigned personnel receive a thorough briefing. *** DIVS can use FOBS personnel to perform as Lookouts and "Human Repeaters." Do not take any water from the Incident Base. Take water from only approved water sources and hydrants. STC XBO 6230C (DIV M), STF XSO 2350F (DIV M) and STC XSD 6416C (DIV W) are ALS.							
9. Division/Group Communication Summary							
Function	Frequency	System	Channel	Function	Frequency	System	
Command	RX 151.1900 TX 159.2250 Tone 13 / 15	King NIFC	1 / 2 CDF C10	Line Medical	RX/TX 156.0750	King NIFC	
	RX 168.7000 TX 170.9750 Tone 1		3 NIFC C1			15 CALCORD	
Tactical Div/Group	RX/TX 158.7375	King NIFC	11 VTAC 13	Air to Ground	RX/TX 159.4500	King NIFC	
						7 CDF T23	
Prepared by (Resource Unit Ldr.) Jason Serna		Approved by (Planning Sect. Ch.) Tim Person (T) <i>[Signature]</i>			Date 8/13/14		Time 2100

12

DIVISION ASSIGNMENT LIST			1. Branch Contingency		2. Division/Group Hargus Group		
3. Incident Name Lodge Complex			4. Operational Period Date: 8/14-8/15 Time: 0700-0700				
5. Operations Personnel							
Operations Chief		M. Brown (Day Ops) / B. Weiser (Night Ops)		Division/Group Supervisor		C. Daly ** / D. Camp (T) **	
Branch Director		Abdul Ahmad		Branch Safety			
6. Resources Assigned this Period							
Strike Team/Task Force/ Resource Designator	Leader		Number Persons	Drop Off PT./Time	Pick Up PT./Time	On Line	Off Line
DOZ PVT E-9**	Matthew Morrison		2	DP-16 0800	1900		
DOZ PVT E-72**	Steven Hill		2	DP-16 0800	1900		
DOZ PVT E-99**	Tracy Coleman		2	DP-16 0800	1900		
HEQB**	Ken Cruz		1	DP-16 0800	1900		
HEQB (T)**	David Newell		1	DP-16 0800	1900		
7. Control Operations Build line from Hargus Road to the northwest along the ridgeline to Rattlesnake Creek. Perform Fire Suppression repair as appropriate.							
8. Special Instructions * DIVS shall ensure an accountability process for assigned personnel, and ensure that all assigned personnel receive a thorough briefing. ** 12 hour resource. *** DIVS can use FOBS personnel to perform as Lookouts and "Human Repeaters." Do not take any water from the Incident Base. Take water from only approved water sources and hydrants.							
9. Division/Group Communication Summary							
Function	Frequency	System	Channel	Function	Frequency	System	Channel
Command	RX 151.1900 TX 159.2250 Tone 13 / 15	King NIFC	1 / 2 CDF C10	Line Medical	RX/TX 156.0750	King NIFC	15 CALCORD
Tactical Div/Group	RX/TX 166.7250	King NIFC	13 NIFC T-5	Air to Ground	RX/TX 159.4500	King NIFC	7 CDF T23
Prepared by (Resource Unit Ldr.) Jason Serna		Approved by (Planning Sect. Ch.) Tim Person (T)			Date 8/13/14	Time 2100	

13

DIVISION ASSIGNMENT LIST	1. Branch	2. Division/Group Suppression Repair Page 1 of 2
---------------------------------	-----------	---

3. Incident Name Lodge Complex	4. Operational Period Date: 8/14-8/15 Time: 0700-0700
--	--

5. Operations Personnel			
Operations Chief	M. Brown (Day Ops) / B. Weiser (Night Ops)	Division/Group Supervisor	Duane Franklin
Branch Director	Tim Meyers	Branch Safety	

6. Resources Assigned this Period						
Strike Team/Task Force/ Resource Designator	Leader	Number Persons	Drop Off PT./Time	Pick Up PT./Time	On Line	Off Line
DOZ PVT E-8**	John Morrison	2	DP-1 0800	1900		
DOZ PVT E-91**	Maders Grading	2	DP-1 0800	1900		
DOZ PVT E-93**	Stan Leach	2	DP-1 0800	1900		
DOZ PVT E-94**	Bryan Denton	2	DP-1 0800	1900		
DOZ PVT E-103**	Heath Garmen	2	DP-1 0800	1900		
DOZ PVT E-166**	Travis Oferrall	2	DP-1 0800	1900		
DOZ PVT E-169**	Thomas Shelly	2	DP-1 0800	1900		
DOZ PVT E-189**	Mel Emerson	2	DP-1 0800	1900		
DOZ PVT E-260**	Louie Arias	2	DP-1 0800	1900		
W/T PVT E-36**	Gary Ford	2	DP-1 0800	1900		
W/T PVT E-37**	Beda Garmen	2	DP-1 0800	1900		
W/T PVT E-108**	Jason Tucker	2	DP-1 0800	1900		
W/T PVT E-134**	John Morrison	2	DP-1 0800	1900		
W/T PVT E-152**	Lu Estrada	2	DP-1 0800	1900		
W/T PVT E-364**	Bob Ashworth	2	DP-1 0800	1900		

7. Control Operations
Grade roads in Branch I and install erosion control structures on Elkroad Ridge Road, Jack of Hearts Creek Road and Cahto Peak. Follow Fire Suppression Repair Plan in IAP.

8. Special Instructions
*** DIVS shall ensure an accountability process for assigned personnel, and ensure that all assigned personnel receive a thorough briefing.**
**** 12 hour resource.**
***** DIVS can use FOBS personnel to perform as Lookouts and "Human Repeaters."**
Do not take any water from the Incident Base. Take water from only approved water sources and hydrants.

9. Division/Group Communication Summary							
Function	Frequency	System	Channel	Function	Frequency	System	Channel
Command	RX 151.1900 TX 159.2250 Tone 13 / 15	King NIFC	1 / 2 CDF C10	Line Medical	RX/TX 156.0750	King NIFC	15 CALCORD
Tactical Div/Group	RX/TX 154.2875	King NIFC	5 VFIRE 25	Air to Ground	RX/TX 159.4500	King NIFC	7 CDF T23

Prepared by (Resource Unit Ldr.) Jason Serna	Approved by (Planning Sect. Ch.) Tim Person (T) <i>[Signature]</i>	Date 8/13/14	Time 2100
---	---	-----------------	--------------

DIVISION ASSIGNMENT LIST	1. Branch	2. Division/Group Suppression Repair Page 2 of 2
---------------------------------	-----------	---

3. Incident Name Lodge Complex	4. Operational Period Date: 8/14-8/15 Time: 0700-0700
--	--

5. Operations Personnel			
Operations Chief	M. Brown (Day Ops) / B. Weiser (Night Ops)	Division/Group Supervisor	Duane Franklin
Branch Director	Tim Meyers	Branch Safety	

6. Resources Assigned this Period						
Strike Team/Task Force/ Resource Designator	Leader	Number Persons	Drop Off PT./Time	Pick Up PT./Time	On Line	Off Line
EXC PVT E-191**	Todd Eller	1	DP-1 0800	1900		
EXC PVT E-213**	Wayne Hiatt	1	DP-1 0800	1900		
EXC PVT E-214**	John Bryant	1	DP-1 0800	1900		
EXC PVT E-330**	David Wise	1	DP-1 0800	1900		
GRD PVT E-440**	Derek Garman	1	DP-1 0800	1900		
GRD PVT E-441**	Bob Fortner	1	DP-1 0800	1900		
HEQB**	N. Curran / M. Grosenbach	2	DP-1 0800	1900		
FOBS**	E. Wahl / L. Webb	2	DP-1 0800	1900		
FOBS / F OBS (T)**	T. Shoots / J. Troy	2	DP-1 0800	1900		
FOBS (T)**	B. Rodgers / K. Ferland	2	DP-1 0800	1900		
READ**	Jesse Irwin	1	DP-1 0800	1900		
READ (T)**	A. Donnell / S. Flanagan	2	DP-1 0800	1900		
T/F Leader	Michael Halverson	1	DP-1 0800	1900		

7. Control Operations
Grade roads in Branch I and install erosion control structures on Elkroad Ridge Road, Jack of Hearts Creek Road and Cahto Peak. Follow Fire Suppression Repair Plan in IAP.

8. Special Instructions
*** DIVS shall ensure an accountability process for assigned personnel, and ensure that all assigned personnel receive a thorough briefing.**
**** 12 hour resource.**
***** DIVS can use FOBS personnel to perform as Lookouts and "Human Repeaters."**
Do not take any water from the Incident Base. Take water from only approved water sources and hydrants.

9. Division/Group Communication Summary

Function	Frequency	System	Channel	Function	Frequency	System	Channel
Command	RX 151.1900 TX 159.2250 Tone 13 / 15	King NIFC	1 / 2 CDF C10	Line Medical	RX/TX 156.0750	King NIFC	15 CALCORD
Tactical Div/Group	RX/TX 154.2875	King NIFC	5 VFIRE 25	Air to Ground	RX/TX 159.4500	King NIFC	7 CDF T23

Prepared by (Resource Unit Ldr.) Jason Serna	Approved by (Planning Sect. Ch.) Tim Person (T) <i>[Signature]</i>	Date 8/13/14	Time 2100
---	---	-----------------	--------------

DIVISION ASSIGNMENT LIST			1. Branch	2. Division/Group Leggett Staging			
3. Incident Name Lodge Complex			4. Operational Period Date: 8/14-8/15 Time: 0700-0700				
5. Operations Personnel							
Operations Chief	M. Brown (Day Ops) / B. Weiser (Night Ops)		Division/Group Supervisor	Kenneth Washington**			
Branch Director			Branch Safety				
6. Resources Assigned this Period							
Strike Team/Task Force/ Resource Designator	Leader	Number Persons	Drop Off PT./Time	Pick Up PT./Time	On Line	Off Line	
STF XKE 5034F**	Brent Moon	16	Leggett Caltrans Yard 0800	1900			
STF XTU 5179F**	Ken Dodson	16	Leggett Caltrans Yard 0800	1900			
DOZ PVT E-247**	Dale Ulsh	2	Leggett Caltrans Yard 0800	1900			
FALC O-383**	Scott Blue	2	Leggett Caltrans Yard 0800	1900			
7. Control Operations Available to respond within 3 minutes.							
8. Special Instructions * DIVS shall ensure an accountability process for assigned personnel, and ensure that all assigned personnel receive a thorough briefing. ** 12 hour resource. *** DIVS can use FOBS personnel to perform as Lookouts and "Human Repeaters." Do not take any water from the Incident Base. Take water from only approved water sources and hydrants.							
9. Division/Group Communication Summary							
Function	Frequency	System	Channel	Function	Frequency	System	Channel
Command	RX 151.1900 TX 159.2250 Tone 13 / 15	King NIFC	1 / 2 CDF C10	Line Medical	RX/TX 156.0750	King NIFC	15 CALCORD
Tactical Div/Group	RX/TX 159.4725	King NIFC	12 VTAC 14	Air to Ground	RX/TX 159.4500	King NIFC	7 CDF T23
Prepared by (Resource Unit Ldr.) Jason Serna		Approved by (Planning Sect. Ch.) Tim Person (T) <i>[Signature]</i>			Date 8/13/14		Time 2100

16



INCIDENT Weather Forecast



FORECAST NO: 12 **NAME OF FIRE:** Lodge Complex
PREDICTION FOR: 24 hour SHIFT **UNIT:** CAL FIRE MEU
SHIFT DATE: 8/13/14 – 8/14/14 (0700-0700) **SIGNED:** Jim Dudley (T) Rich Thompson
TIME AND DATE **Incident Meteorologist**
FORECAST ISSUED: 8/13/14 @ 1900

WEATHER DISCUSSION: High pressure ridging will build over the region beginning today and it will persist through early next week. Moderate warming and drying will occur today with the trend continuing into Saturday. For Sunday and Monday expect little day to day change in temperature and relative humidity trends. Terrain driven winds will predominate with Ridgetop winds generally light.

WEATHER FORECAST:

WEATHER: Mostly Clear.

TEMPERATURES: Max: 82-90...except 77-84 ridgetops/upper slopes.
 Min: 53-62...except 60-65 ridgetops/upper slopes.

HUMIDITY: Min: 26-34%.
 Max: 60-80%...except 45-65% ridgetops/upper slopes.

20 FT WINDS:

RIDGETOP - 0700-1200: Northeast 2-5 MPH Gust 7 MPH.
 1200-2000: Northwest 4-8 MPH Gust 12 MPH.
 2000-0700: Northwest 2-4 MPH Gust 6 MPH.

SLOPE/VALLEY - 0700-1100: Variable/upslope 2-4 MPH.
 1100-1900: Upvalley 3-6 MPH Gust 10 MPH.
 1900-0700: Downslope/downvalley 2-4 MPH.

STABILITY/INVERSION: Below 1000 ft AGL...dissipating around 1100.

OUTLOOK FOR FRIDAY: Clear. Highs: 85-93...except 80-87 ridgetops. Lows: 55-64...except 62-67 ridgetops. Min RH: 22-29%. Max RH: 55-75%. Ridgetop winds: Northwest to north 3-5 MPH Gust 8 MPH. Slope/Valley winds: typical diurnal winds.

EXTENDED FORECAST SATURDAY THROUGH MONDAY:

Saturday: Clear. Highs: 86-94...except 81-88 ridgetops. Lows: 56-65...except 63-68 ridgetops. Min RH: 20-25%. Max RH: 52-72%. Ridgetop winds: Southeast 3-8 MPH Gust 10 MPH. Slope/Valley winds: typical diurnal winds.

Sunday: Mostly clear. Highs: 86-96...except 80-86 ridgetops. Lows: 56-65...except 64-68 ridgetops. Min RH: 17-23%. Max RH: 52-72%. Ridgetop winds: Southeast 3-8 MPH Gust 10 MPH. Slope/Valley winds: typical diurnal winds.

Monday: Mostly clear. Highs: 86-96...except 80-86 ridgetops. Lows: 57-65...except 64-68 ridgetops. Min RH: 15-26%. Max RH: 51-75%. Ridgetop winds: South 4-9 MPH Gust 11 MPH. Slope/Valley winds: typical diurnal winds.

FIRE BEHAVIOR FORECAST

FORECAST NUMBER 12	TYPE OF FIRE: Wildfire
FIRE NAME Lodge Complex	OPERATIONAL PERIOD 8-14-14 (24 HR SHIFT)
DATE ISSUED 8-13-2014	TIME ISSUED 1900 HOURS
UNIT CALFIRE Mendocino Unit	SIGNED Renee Henault FBAN (T)

INPUTS

WEATHER SUMMARY * Continued cool, expect general winds to shift from SW to NW as front passes*****
Thursday: High temps 77-90 degrees; **Min RH:** 26-34%
Winds: Ridge top: NE 2-5 Gusts to 7 until noon, then NW 4-8 Gusts to 12 until sundown.
 Slope/valley: Up slope terrain driven until 1100, then up valley 3-6 Gusts to 10
Thursday Night: Low temps: 55-67 **Max RH:** 55-75% valleys, 40-60% ridges upper slopes
Winds: Ridge top: NW 2-4 Gusts to 6 until 0700.
 Slope/valley: Down slope/down valley 2-4 1900-0700
LAL: 1

OUTPUTS

FIRE BEHAVIOR

GENERAL ****Occasional short runs possible in green islands****

Fine Dead Fuel Moisture Predicted: 5% Unshaded, 8% Shaded
Live Fuel Moisture= CHAMISE (50-60%) MANZANITA (75-80%) *both critical*
Probability of Ignition = 40% Shaded fuels, 70% Unshaded.
Spotting Distance= 1/4 mile
Forecast ERC: 61 ~90th percentile
Forecast Burning Index: 64

- Expect backing surface fire in timber understory.
- Surface fire in the brush with transition to canopy possible when winds align with slope. *Group torching and short runs possible with torching Max flame lengths up to 75' and 120 ch/hr.*
- **Surface fire transition to crown possible when sustained eye level winds within the fuel sheltering are greater than 6mph.**

SPECIFIC

Branch II
 Favorable NW winds contribute to slow, backing fire behavior toward the north into Little Low Gap Creek and the Eel River.

Branch IV **Anticipate increased fire behavior as burnout operations merge with main fire**
 Re-burn potential exists in areas where fire intensity was not adequate to consume the over story. Winds may align with drainages and ignite these areas. Spotting and rollout will continue to challenge crews sending embers up to 1/4 a mile. Terrain dominates the diurnal wind flow within the Eel River Drainage, NW flow aloft may combine and enhance canyon flow towards Horseshoe bend.

Location / Fuel Type	Max Flame Length	Max Rate of spread	Spotting	Probability of Ignition
All Divisions: Timber-Shrub	< 10'	<13 ch/hr	1/4 mi	50-70%
Divisions K,L,M,N Moderate Load Timber Litter	< 6'	<11 ch/hr	1/4 mi	50-70%
Mid-slopes Broadleaf Litter	< 2'	<2 ch/hr	1/4 mi	50-70%
Upper slopes/Isolated patches- Brush	<20	<75 ch/hr	1/4 mi	50-70%

AIR OPERATIONS:
 Inversion over the fire area until 1200 below 1000'AGL. Afternoon NW winds may impact visibility at the helibase.
 Mixing height 7000' AGL

SAFETY

Be alert for re-burn potential in areas where canopy has been scorched/pre-heated.



SAFETY MESSAGE

“LODGE COMPLEX”



CA-MEU 7202 August 14, 2014 0700-070

COMPLACENCY

**CAUSES OF COMPLACENCY CAN COME FROM DIFFERENT DIRECTIONS
DON'T GET COMPLACENT!**

Now is when some personnel may begin to forget the basics

- Cooler temperatures and the lack of active fire may cause complacency.
- Patrol and mop-up can seem 'routine' causing you to let your guard down.
- Many accidents occur during the wind down of an incident – this is not the time to get hurt.

Mitigation- Situational Awareness, Situational Awareness, Situational Awareness!

- Keep your head in the game!
- Identify those things that may be causing you to become complacent.
- Coach members of your team and take care of one another.

FATIGUE

FATIGUE MAY COMPORMISE SAFETY!

Be on the lookout for signs of fatigue – look out for one another - Look For:

- Chronic feelings of exhaustion, feeling “spacey.”
- Impaired decision-making and judgment • Low motivation • Moodiness.
- An inability to pay attention and short-term memory problems, confusion.
- Slowed reflexes and responses.

Mitigation – Proper nutrition reduces fatigue

- Eat foods, which provide steady energy • limit sugary, fatty, fried foods.
- Hydrate - proper hydration prevents fatigue.
- Manage work rest ratio while performing work.
- Take full advantage of time off line to rest.

DEMOB

ACCIDENTS CAN HAPPEN DURING DEMOB

Be on the lookout for vehicle and pedestrian congestion

- Vehicles will be moving in tight areas around Ground Support and parking areas.
- Increased backing and maneuvering of vehicles in tight spots.
- Crews may be in a hurry to leave the incident due to reassignment.

Mitigation- Maintain high levels of situational awareness through the demob process.

- Provide back-up and spotter personnel - more than one may be required
- Drive safely and be on the lookout for ICP pedestrian traffic
- Drive safely and monitor fatigue when traveling to home unit or new incident.

19

Jack Piccinini

SAFETY OFFICER

S
A
F
E
T
Y

S
A
F
E
T
Y

S
A
F
E
T
Y

I
T
'
S

U
P

T
O

Y
O
U
!
!
!
!
!



SAFETY ADVISORY ***“LODGE COMPLEX”***



STUMP HOLE AWARENESS

Awareness – Numerous burn injuries have occurred to firefighters during mop-up operations, from hazards that they did not anticipate



Mitigation – Maintain your Situational Awareness while on your assignment and when working in and around burned areas

- Stump holes can be very deep and hold heat for an extended period of time.
- Often times, there will be no smoke or visual warning of the hazard below the ground.
- PPE is a simple way to prevent a majority of injuries that occur during mop up operations.
- Look for the central hole of a previous tree, surrounded by a large patch of white ash, and anticipate a weakened ground structure around that area, sometimes as large as 5 – 10 feet wide (or more). Areas impacted can also include roadways, if the root system was large enough and grew underneath the road.

AIR OPERATIONS SUMMARY

(Expanded Form for Large Operations)

OPERATIONAL PERIOD DATE: DAY SHIFT DATE: 08/14/2014

START: 0700 END: 0700

1. INCIDENT NAME: LODGE	2. PREPARED BY: Mark Gradek	3. PREPARED DATE/TIME: 8/13/14 1700
4. REMARKS (Safety Notes, Hazards, Air Operations Special Equipment, etc.):		
*All GPS data to be collected (degrees, minutes & decimal minutes) **Avoid aerial application of retardant or foam within 300' of waterways, bodies of water. If retardant is dropped within these areas, notify Lodge Helibase with Lat/ Long, estimate of gallons, and a map. All requests for recons to go through Air Ops.		
SUNRISE: 06:22 SUNSET : 20:12 CUT-OFF: 19:42 Altitude: 8,000' MSL Radius 8 nautical miles Freq. 124.0250 NOTAM 4/2065		

***TRACK DIPSITE LOCATIONS

6. PERSONNEL	Phone	FREQUENCIES	AM	FM	8. FIXED-WING # Avail / Type/ Make-Model / FAA N# / Base(s)
AODB: Mark Gradek	707 889-4303	AIR/AIR Fixed	124.0250	169.2875	AA-
ATGS: Ukiah Air Attack	707 462-6102	AIR/AIR RW	123.025		Air Tactical
ASGS: Greg Bradshaw	562 708-9631	AIR/GROUND:			L-
HLCO: Jake Serrano	707 484-5060				L-
HCWN: Sean Kelly	707 365-1332	AIR/GROUND	159.4500		
HCWN: Justin Galvan	707 349-1978		CDF Tac 23 Tone 16 192.8		
HEBM: Nate Glaeser(T)	707 484-9697	COMMAND:	TX 159.2250 Tone 15 162.2		Airtankers
HEBM: Tim Perkins	714 287-4296	CDF CMD 10	RX 151.1900 Tone 8 103.5		Order as needed.
H-1 39 46.1542N X 123 38.7057		AIR GUARD	168.6250 Tone 1 110.9		
LODGE Helibase	39 44.44N x 123 31.03 Lat/Long	TOLC	118.075	Deck:163.100	Other: Helibase Crash Rescue Engine LVF E5180 E-13
		TOLC		Deck:	

9. HELICOPTERS (Use Additional Sheets As Necessary)													
FAA N#	TY	MODEL	BASE	AVAIL	START	REMARKS	FAA N#	TY	MAKE/MODEL	BASE	AVAIL	START	REMARKS
C901	2	UH1-H	LOD	08:00	08:30	IA/Rescue	C823	1	UH-60	LOD	08:00	08:30	Nat Guard
C214	2	UH1-H	LOD	08:00	08:30	Longline	C830	1	UH-60	LOD	08:00	08:30	Nat Guard
							C831	1	UH-60	LOD	08:00	08:30	Nat Guard
							C825	1	UH-60	LOD	08:00	08:30	Nat Guard
							C838	1	UH-60	LOD	08:00	08:30	Nat Guard
C32	3	UH-72	LOD	08:00	08:30	MILCO	C746	1	S-64	LOD	08:00	08:30	Exclusive
C301	3	Bell-206B	LOD	08:00	08:30	Helco	C783	1	S-64	LOD	08:00	08:30	Exclusive
4LA	3	AS 350 B	LOD	08:00	08:30	Helco							
							C826	1	UH-60	RED	24/7	-----	Hoist/Medevac

INCIDENT RADIO COMMUNICATIONS PLAN		Incident Name		Lodge Complex		Date/Time Prepared		Operational Period Date/Time	
						16:15 8/13/2014		08/14/14 07:00-07:00	
Zn / Ch	Function	Channel Name/Trunked Talkgroup	Assignment	RX Freq	RX Tone/NAC	TX Freq	TX Tone/NAC	Mode A, D, M	Remarks
1	COMMAND	CDF C10	BRANCH I / II / IV	151.1900	103.5	159.2250	162.2	A	TONE 15
2	COMMAND	CDF C10	BRANCH II / IV	151.1900	103.5	159.2250	141.3	A	TONE 13
3	COMMAND	NIFC C1	DIV Y / DP 5 AREA	168.7000	0.0	170.9750	110.9	A	TONE 1
4	TACTICAL	VFIRE 24	DIV A / D / G / K / L	154.2725	156.7	154.2725	156.7	A	
5	TACTICAL	VFIRE 25	ROAD/SUPPRESSION	154.2875	156.7	154.2875	156.7	A	
6	TACTICAL	VFIRE 26	DIV M	154.3025	156.7	154.3025	156.7	A	BRANCH IV
7	TACTICAL	CDF T23	AIR TO GROUND	159.4500	192.8	159.4500	192.8	A	ALL DIVISIONS
8	TACTICAL	CDF T20	DIV N	159.3750	192.8	159.3750	192.8	A	BRANCH III / BRANCH IV
9	TACTICAL	VTAC 11	DIV P	151.1375	156.7	151.1375	156.7	A	BRANCH IV
10	TACTICAL	VTAC 12	DIV W	154.4525	156.7	154.4525	156.7	A	BRANCH IV
11	TACTICAL	VTAC 13	DIV Y	158.7375	156.7	158.7375	156.7	A	BRANCH IV
12	TACTICAL	VTAC 14	STAGING	159.4725	156.7	159.4725	156.7	A	0700 BRIEFING BROADCAST DAILY
13	TACTICAL	NIFC T-5	CONTINGENCY BRANCH	166.7250	0.0	166.7250	0.0	A	CONTINGENCY BRANCH
14									
15	TACTICAL	CALCORD	ALL DIVISIONS	156.0750	156.7	156.0750	156.7	A	LINE MEDICAL
16	AIR GUARD	GUARD	EMERGENCY ONLY	168.6250	0.0	168.6250	110.9	A	AIR GUARD - emerg. use only
17									
18									
19									
20	AIR GUARD	GUARD	EMERGENCY ONLY	168.6250	0.0	168.6250	110.9	A	AIR GUARD - emerg. use only

Prepared By (Communications Unit Leader)

Austin L. Browne

Deviation is assumed to be narrow band unless otherwise noted in the remarks. Mode refers to either "A" (analog), "D" (digital) or "M" (mixed mode). 1/14/14 v.5

MEDICAL PLAN ICS 206	1. INCIDENT NAME Lodge Complex	2. DATE PREPARED 8/13/14	3. TIME PREPARED 1500 hrs	4. OPERATIONAL PERIOD 8/14/14 0700-0700
---------------------------------------	--	-----------------------------	------------------------------	---

5. INCIDENT MEDICAL AID STATIONS	
Expeditors Medical Supply	Incident Base (adjacent to feeding area)
PARAMEDICS NO	

6. TRANSPORTATION

A. AMBULANCE SERVICES				
NAME	LOCATION	PHONE	PARAMEDICS	
			YES	NO
Laytonville Ambulance	44950 Willis Ave., Laytonville, CA. 95454	707-489-0677	X	
Medstar Ambulance	Ukiah, CA.	707-272-9110	X	
CalFire C901(Hoist/ Rescue)	Lodge Helibase	707-354-0023		X
Air National Guard- Guard826	Redding, CA	619-607-8642	X	
CalStar 4-Air Ambulance	Ukiah, CA.	707-459-5336	RN	

B. INCIDENT AMBULANCES			
NAME	LOCATION	PARAMEDICS	
		YES	NO
Laytonville Ambulance- M5121	Incident Base	X	
Medstar Ambulance- M9150	Leggett Staging	X	

7. HOSPITALS								
NAME	ADDRESS	TRAVEL TIME- minutes		PHONE	HELIPAD		BURN CENTER	
		AIR	GRND		YES	NO	YES	NO
Howard Memorial	1 Madrone St. Willits, CA	20	70	707-456-3050		X		X
Santa Rosa Memorial Level II trauma	1165 Montgomery Dr., Santa Rosa	40	120	707-546-3210	X			X
U.C. Davis Level I Trauma	2315 Stockton Blvd. Sacramento, CA	50	3 HR	916-734-3636	X		X	

8. MEDICAL EMERGENCY PROCEDURES

EMERGENCY FREQUENCY: CALCORD

LINE EMERGENCY:

Crew Supervisor will contact Division Supervisor with patient complaint/condition and location.

- Division/Group Supervisor contacts:
 1. Closest EMS resource
 2. Communications Unit
- Communications Unit contacts:
 1. Ground or Air ambulance as requested
 2. Operations
 3. Safety
 4. Medical Unit (707) 984-6925
- Division Supervisor or designee will serve as point of contact and run medical emergency on assigned channel.
 1. A pre-assigned tactical frequency (i.e. CALCORD) should be used for IWI and only for duration of need.
- Communications Unit will clear command channel for emergency traffic as needed and only for duration of need.

CAMP EMERGENCY:

Contact Medical Unit on CALCORD with patient complaint/condition and location. Medical Staff will respond to stabilize incident:

- Medical Unit contacts:
 1. Communications
 2. Safety
 3. Logistics
 4. Operations
 5. Crew Supervisor
 6. Comps/Claims

INCIDENT REPORTING PROCEDURES

CHIEF COMPLAINT _____
 LOCATION OF PATIENT _____
 POINT OF CONTACT _____
 TRANSPORTATION REQUESTED BY: AIR ___ GROUND ___
 POINT OF PICKUP _____
 LAT _____ LONG _____
 PATIENT UNIT ID _____
 IS AN EMT WITH PATIENT: YES ___ NO ___
 AGE _____
 SEX: MALE ___ FEMALE ___


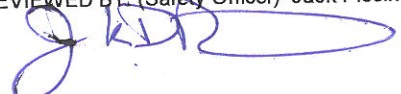
ALL EMERGENCIES---Secure the area and identify witnesses for later investigation. Keep an accurate log of events.

Hospital	LAT	LONG
Howard Memorial	N39 24.00	W123 21.00
Santa Rosa Memorial	N38 26.37	W122 42.50
U.C. Davis	N38 33.20	W121 27.10

ICS 206

9. PREPARED BY: (Medical Unit Leader -T) Tony Mendoza

10. REVIEWED BY: (Safety Officer) Jack Piccinini

12 HOUR RESOURCE EXAMPLE

EMERGENCY SHIFT TICKET and EVALUATION FORM <small>The responsible Government Officer will update this form each day or shift</small>						Contractor Name (PRINT)	
Incident or Project Name LODGE			Incident Number CAMEU007202	Request Number E-42		Contractor Name (PRINT) Willys Water Service	
Agreement Number MEU-012345-00			Equipment Model / Type Water Tender T I		Operator #1 (Full Name) Paul Smith		
Equipment Make Perterbilt			Licence Number (SE number OK) SE123456		Operator #2 (Full Name) Paul Smith		
Serial Number (vin number last six OK) 1H3456			Equipment Status		<input checked="" type="checkbox"/> Contractor <input type="checkbox"/> Government <input checked="" type="checkbox"/> Contractor <input type="checkbox"/> Government <input checked="" type="checkbox"/> Inspected <input type="checkbox"/> Under Agreement <input type="checkbox"/> Released by Government <input type="checkbox"/> Withdrawn by Contractor		
Date		Time		Equipment Use		Remarks	
Mo / Day	Start	Stop	Work	(Circle) Hours	Days / Miles	Assignment	
8/10	0001	0700	7			OFF SHIFT	
8/10	0701	1900	12			DIV Z	
8/10	1901	2400	5			OFF SHIFT	
Vendor Rating						Govt. Rep. Name and Position (PRINT)	
Met Performance Expectations		Poor*	Avg.	Good	Exc.	N/A	
Equip. in Safe Working Condition			X			Joe Fire Captain DIVS XYZ	
Personnel Skill Level			X			Govt. Rep. Signature <i>Joe Fire Captain</i>	
Personnel Operate Safely			X			Contractor Signature Paul Smith	
Personnel's Cooperation Level			X			Date	Time
Overall Performance			X			8/10/2014	1900
* NOTE: Any rating of POOR requires explanation or comment.						CALFIRE 297	
**Final evaluation or for more documentation, use an ICS Form 230 or equivalent.						(Rev 3-2011)	

Pink - Finance Blue - Home Unit HE Coordinator Yellow - Vendor White - Govt. Representative

24 HOUR RESOURCE EXAMPLE

EMERGENCY SHIFT TICKET and EVALUATION FORM <small>The responsible Government Officer will update this form each day or shift</small>						Contractor Name (PRINT)	
Incident or Project Name LODGE			Incident Number CAMEU007202	Request Number E-321		Contractor Name (PRINT) DOE EQUIPMENT	
Agreement Number MEU-543210-00			Equipment Model / Type D6HR T II		Operator #1 (Full Name) JOE HELPER		
Equipment Make CATAPILLAR			Licence Number or SE Number 18WLS4R		Operator #2 (Full Name) EXTRA HELP		
Serial Number (vin number) HK543210			Equipment Status		<input checked="" type="checkbox"/> Contractor <input type="checkbox"/> Government <input checked="" type="checkbox"/> Contractor <input type="checkbox"/> Government <input checked="" type="checkbox"/> Inspected <input type="checkbox"/> Under Agreement <input type="checkbox"/> Released by Government <input type="checkbox"/> Withdrawn by Contractor		
Date		Time		Equipment Use		Remarks	
Mo / Day	Start	Stop	Work	(Circle) Hours	Days / Miles	Assignment	
8/8	0001	0700	7			DIV X	
8/8	0701	2400	17			DIV A	
Vendor Rating						Govt. Rep. Name and Position (PRINT)	
Met Performance Expectations		Poor*	Avg.	Good	Exc.	N/A	
Equip. in Safe Working Condition			X			Joe Fire Captain DIVS XYZ	
Personnel Skill Level			X			Govt. Rep. Signature <i>Joe Fire Captain</i>	
Personnel Operate Safely			X			Contractor Signature <i>Extra Help</i>	
Personnel's Cooperation Level			X			Date	Time
Overall Performance			X			8/8/2014	0600
* NOTE: Any rating of POOR requires explanation or comment.						CALFIRE 297	
**Final evaluation or for more documentation, use an ICS Form 230 or equivalent.						(Rev 3-2011)	

Pink - Finance Blue - Home Unit HE Coordinator Yellow - Vendor White - Govt. Representative

24

FIRE SUPPRESSION REPAIR PLAN

LODGE COMPLEX: CA-MEU-007202 8/14/2014

Fire Suppression Repair is the repair of damage caused directly from fire suppression activities. It is not the repair of areas damaged by the fire activity itself such as burned material and secondary damage such as falling trees or erosion from hydrophobic soils. We are responsible for repairing only the damage caused by *fighting* the fire. We are also not responsible for upgrading facilities beyond their pre-fire condition.

Instructions for suppression repair during mop-up

Dozer operators will install waterbreaks (waterbars) on all dozer lines as well as secondary access roads while performing mop-up operations. *Dozer lines amongst the structures* shall have the berms pulled and waterbreaks installed where necessary with hand crews to minimize the impacts on residents. Hand crews will install waterbreaks on all handlines.

Scattered trash shall be collected and deposited in trash piles. Trash piles will be removed and placed at drop points either before or while hose lays are collected. Police your areas and clean them up as events wind down.

Inventory and Mapping

Suppression overhead and other personnel will document rehabilitation needs and their location. This information will be given to the Fire Suppression Repair Group. **GREEN** flagging will be used to designate areas in need of repair. The type of repair/instructions will be written directly on the green flagging for ease of use.

Objectives

- Install waterbreaks while crews and dozers are actively onsite on roads, trails, and handlines damaged by fire suppression. Waterbreaks shall have proper angle and open outlets to insure effective drainage.
- Repair damaged fences (remember, those portions damaged by suppression efforts, not by the fire itself).
- Restore barriers on roads that were previously abandoned but opened for suppression activities.
- Insure that drainage is provided at crossings, ditch drains, remove deposited material, and stabilize approaches.
- Report any damages or damages mitigated to the Fire Suppression Repair Unit leader.
- Complete all repair work prior to final demobilization.

Firelines/Existing Fuelbreaks/Staging Areas/Safety Zones/Heliports/Drop Points

- Remove debris deposited during suppression activities, including flagging and signs.
- Install waterbreaks.
- Pull berms back onto disturbed areas, except in areas identified as needing a berm to serve as a barrier for roads/trails.
- On Federal land, spread brush across the disturbed areas to provide ground cover and a seed source.
- On Federal land, masticators/excavators/dozers with brush rakes will be utilized on existing fuelbreaks utilized during suppression efforts to reduce any excessive fuel loading within a WUI Threat or Defense Zone.

Roads

- Clean culverts and drainage facilities plugged with soil and debris deposited during suppression activities.
- Re-establish cross drains and drainage if removed or made inoperable by suppression activities. Use cut brush – if available and nearby – to block off potential OHV access. On Federal land, break up piles and scatter brush over the fireline.
- Remove outboard berms created during suppression activities and incorporate into road surface.

Watercourses

- All slash, soil and debris deposited into watercourses during suppression activities shall be removed.
- All loose soil must be pulled away from the watercourse and stabilized (graded smooth, and slash packed for cover).
- If excavated, the stream channel will be wider than the natural channel and set to natural grade. The approaches to the crossing will be sloped back to prevent future stream bank failure.

Archaeological or Historic Sites – Notify incident Archaeologist and Fire Suppression Repair Group.

Waterbreak/Waterbar/Cross Drain spacing

Line or Road Gradient (%)	0-10%	11-25%	26-50%	>50%
Spacing	200'	100'	75'	50' (25' on Federal land)

Waterbreaks shall be cut diagonally with a minimum depth of 6" into existing grade with a 12" berm for a minimum height of 18". Waterbreaks will be installed at a 30-45 degree angle. Outlets shall be open and directed into non-erodible material.

Conflicts with Suppression Activities

Postpone repair activities that hamper access or other suppression actions. The location of needed repair actions shall be noted and relayed to the Fire Suppression Repair Group. DO NOT compromise fire lines by spreading flammable material across them.

Immediate Need Firing Operation Checklist

GO / NO GO CHECKLIST

- All personnel briefed
- Weather forecast reviewed
- Resources in place
- Lookouts posted as needed
- Anchor and termination firing points identified
- Communications systems in place
- Fire behavior forecast reviewed
- Escape routes and safety zones established and made known
- Adjoining forces/Air Attack notified
- APPROVAL / NOTIFICATION(S) PRIOR TO FIRING

0044.4.1 V2

Personnel Briefing

- Objectives
- Conditions
 - Weather
 - Fuel
 - Burn window
- Resource assignments
 - Firing personnel
 - Holding forces
 - Lookouts
- Ignition plan/sequence
- Communication Plan
- Contingency Plan
- Safety issues
 - Escape routes and safety zones

*** ALL FIRING OPERATIONS WILL UTILIZE THIS CHECKLIST AND OBTAIN PRIOR APPROVAL FROM OPERATIONS THROUGH THE APPROPRIATE BRANCH DIRECTOR AND DIVISION SUPERVISOR.**

Location: _____

Date: _____ **Time:** _____

Firing Supervisor: _____



DEMOB

LODGE COMPLEX
CA – MEU – 007202

- Resources report to Demob trailer at the times posted on the tentative demob list which is posted around the Incident Base.
- Resources will get signatures from the following units prior to departing incident base:
 - Motels
 - Supply
 - Training (If they have a trainee)
 - Communications
 - Saw Shop
 - Documentation
 - Time
- Resources will then report to Howard Forest Training Center for ground support inspection.
- Once completed with ground support and the ICS #221 has been given to the demob representative at Howard Forest, resources then are approved to continue to reassignment or released back to home unit.

TRAINING SPECIALIST MESSAGE

Thursday August 14, at 1200 is the deadline for opening an active training assignment with the Training Specialist on this incident.

Trainees who have not previously checked in with the TNSP should do so immediately.

Beat the Rush!!

Trainer / Evaluators/Trainees:, you are strongly encouraged to take advantage of your time in camp and conduct the training close-out with the TNSP. It is not necessary to wait until demob!

**Chris Barden 951-818-8578
Training Specialist**

**ALL CAL FIRE CREWS, CONTRACT
COUNTY CREWS, FEDERAL CREWS.**

**Please check in with one of the Crew Tech
Specialist listed below to confirm Strike Team
Leaders Phone numbers. We are located in the
Plans/Resource Trailer. Thank you.**

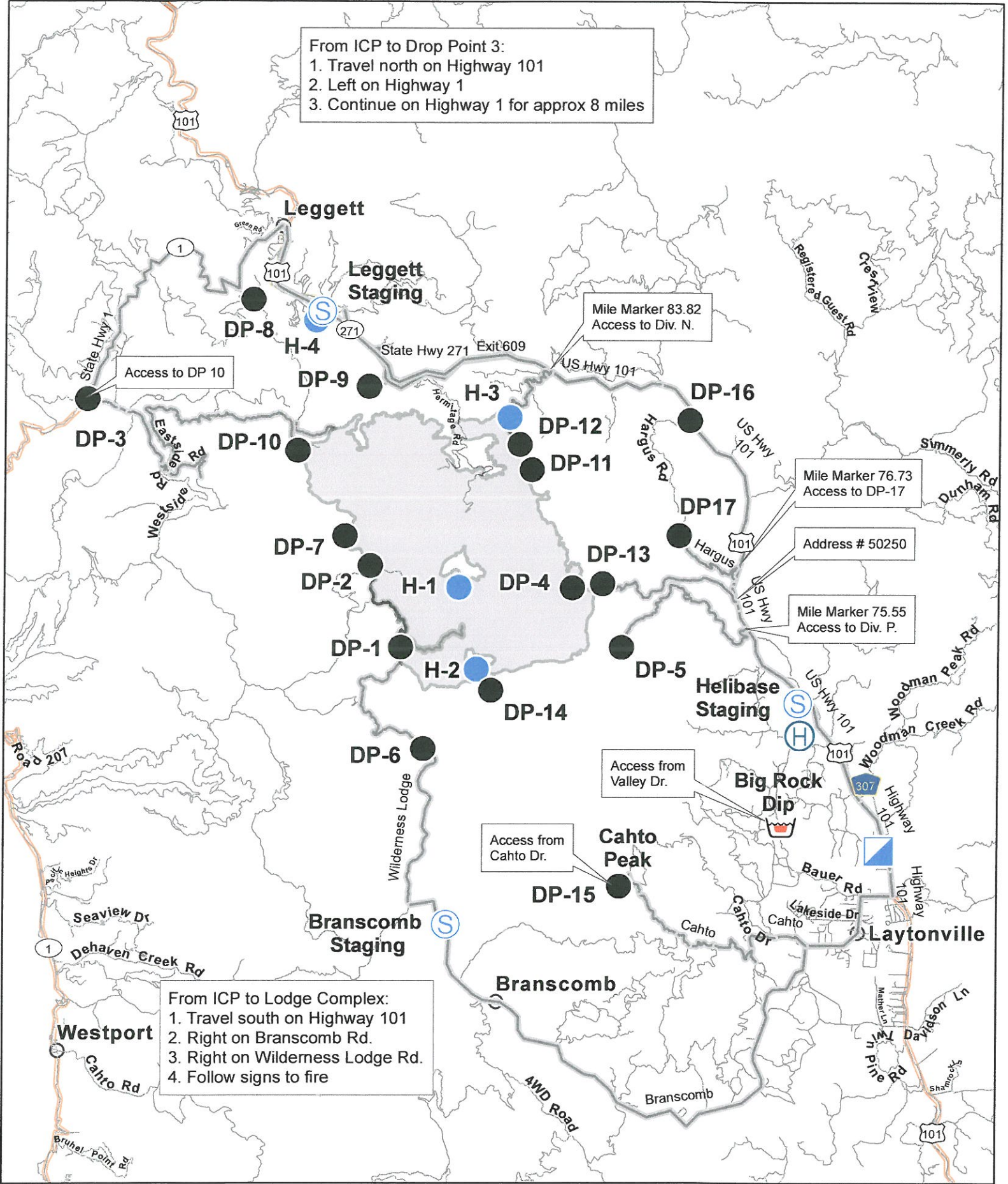
John Gutierrez 619-507-6542

Ue Moua 760-937-4325

Jeff Johnson 951-287-4960

From ICP to Drop Point 3:
 1. Travel north on Highway 101
 2. Left on Highway 1
 3. Continue on Highway 1 for approx 8 miles

From ICP to Lodge Complex:
 1. Travel south on Highway 101
 2. Right on Branscomb Rd.
 3. Right on Wilderness Lodge Rd.
 4. Follow signs to fire

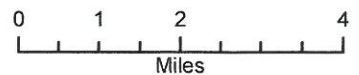


- ICP
- Drop Point
- Helispot
- Helibase

- Staging
- Retardant /Mud Pit
- Lodge Complex

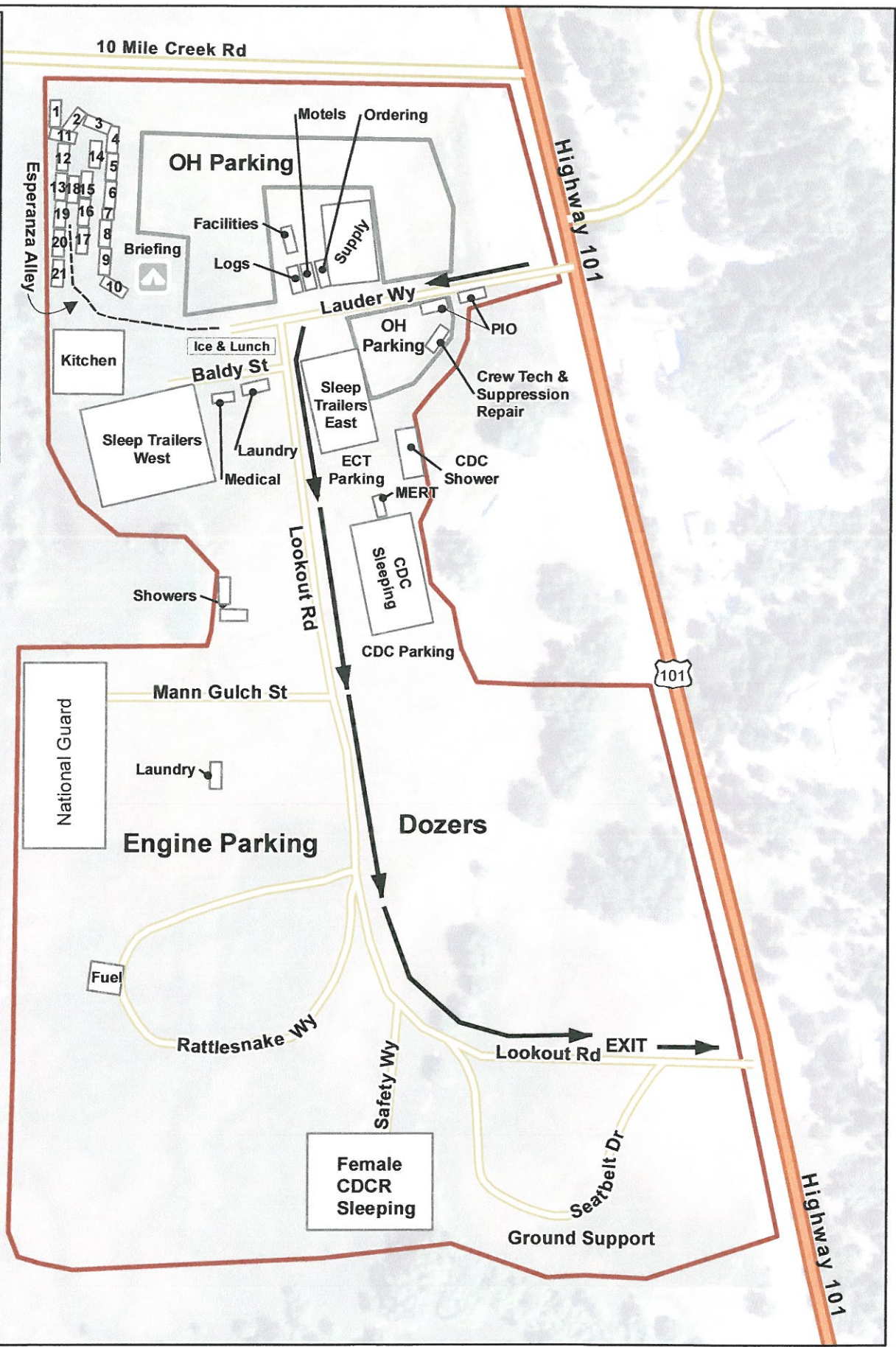


Travel Map
 Lodge Complex
 14-CA-MEU-007202
 Team 4 GIS 8/14/2014



30

- 1 IC
- 2 Plans/Resource
- 3 Doc
- 4 USFS Arep/Train
- 5 Fin/CompClaim
- 6 Safety
- 7 IT
- 8 Comms
- 9 Radio Repair
- 10 Co-Op
- 11 Operations
- 12 BLM
- 13 GIS
- 14 Time
- 15 Fin/Proc
- 16 DeMob/CheckIn
- 17 BLM Arep
- 18 Sit/Fban/Imet
- 19 Copy
- 20 Liason
- 21 OES



Not To Scale



Incident Camp Map
Lodge Complex
14-CA-MEU-007202





CAL FIRE

WATER USAGE PLAN

California Drought Emergency

The following shall be considered and implemented by all fire resources as a means to provide maximum efficiencies when utilizing water resources, while minimizing the impacts to private and public water supplies. Accountability shall be maintained for all water supplies that are utilized and care should be applied to ensure proper replacement and/or reimbursement to the supplier/owner.

Fireline personnel- (During mop up operations)

- Use Pencil Hose and Garden Nozzles with Shut-Offs.
- Use Back pumps.
- Use Dry Mop-up and consolidation of heavy fuels to areas where they can burn out safely.
- Locate/Relocate Firelines to lighter fuels or natural barriers when safe.
- Set up and use portable tanks in anticipation of longer transport times for Water Tenders.
- Use of foams, gels and other water enhancers.
- Evaluate need to mop up in excess of 200 feet from fireline.

Road Maintenance and Repair-

- Monitor and water roads only when and where needed.
- Water when most effective (evening and nights).
- Use chemical treatments when available (Magchloride, Omni bind etc.).
- Consider use of tertiary or treated water.

Aviation Operations-

- Consider use of Gels, Foams and Retardants. Set up portable plants.
- Consider using Blivits and Pencil Hose for interior mop up operations as opposed to numerous bucket drops.
- Establish and use pre-use agreements for existing and known water sources.
- Use large watershed dip sites when able. Minimize use of small, static ponds and lakes.
- Maintain accountability of water used and locations of dip sites.
- Evaluate need for interior bucket drops.

Private Water Supplies-

- Notify property owner as early as possible.
- Minimize usage and develop alternative water supplies when and where appropriate.
- Track usage (meter, ICS-214 Water Usage Reports) and develop a plan to replace water.
- Make arrangements for reimbursement and damage claims if needed.

Public/Municipal Water Supplies-

- Notify Agency as soon as possible and request a representative to the incident.
- Identify fill areas and request metering devices. Note locations on incident map.
- Use alternative or reclaimed water sources when available. Note locations on incident map.
- Make arrangements for reimbursement and damage claims if needed.

Management and Supervision-

- Use leaders intent and establish Water Conservation as a Management Objective.
- Consider complexity of water use on incidents. Establish a Water Supply Group Supervisor to coordinate additional resources to support the incident needs.
- Complete the Water Usage Report daily and turn in to Finance.
- Review this check list and brief daily.

