

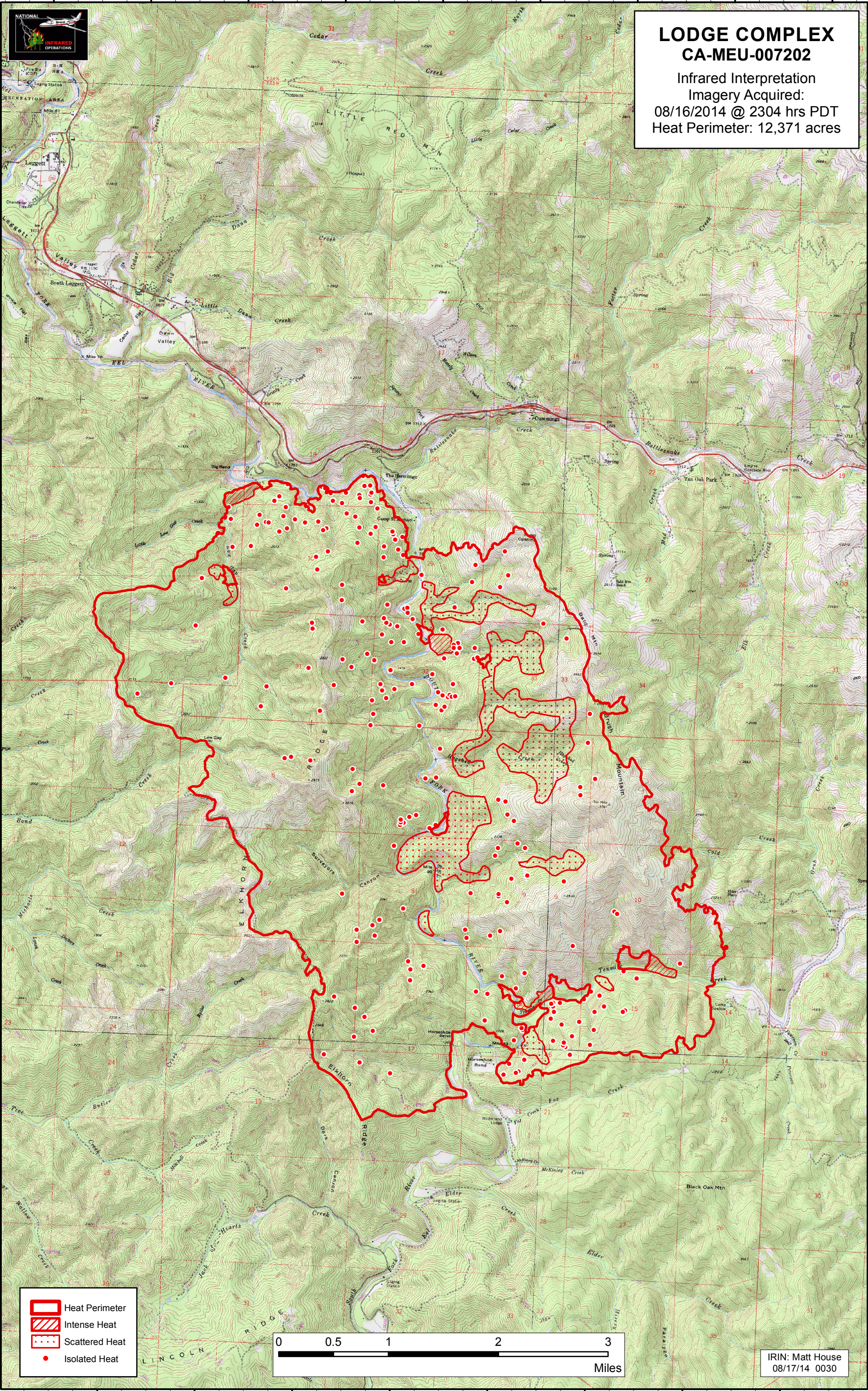
123°43'0"W 123°42'0"W 123°41'0"W 123°40'0"W 123°39'0"W 123°38'0"W 123°37'0"W 123°36'0"W 123°35'0"W





39°53'0"N
39°52'0"N
39°51'0"N
39°50'0"N
39°49'0"N
39°48'0"N
39°47'0"N
39°46'0"N
39°45'0"N
39°44'0"N
39°43'0"N

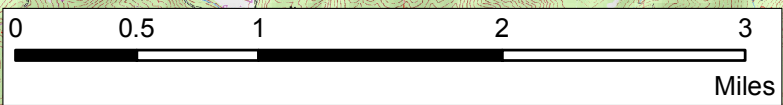
39°53'0"N
39°52'0"N
39°51'0"N
39°50'0"N
39°49'0"N
39°48'0"N
39°47'0"N
39°46'0"N
39°45'0"N
39°44'0"N
39°43'0"N



**LODGE COMPLEX
CA-MEU-007202**
Infrared Interpretation
Imagery Acquired:
08/16/2014 @ 2304 hrs PDT
Heat Perimeter: 12,371 acres



-  Heat Perimeter
-  Intense Heat
-  Scattered Heat
-  Isolated Heat



IRIN: Matt House
08/17/14 0030

123°42'0"W 123°41'0"W 123°40'0"W 123°39'0"W 123°38'0"W 123°37'0"W 123°36'0"W 123°35'0"W