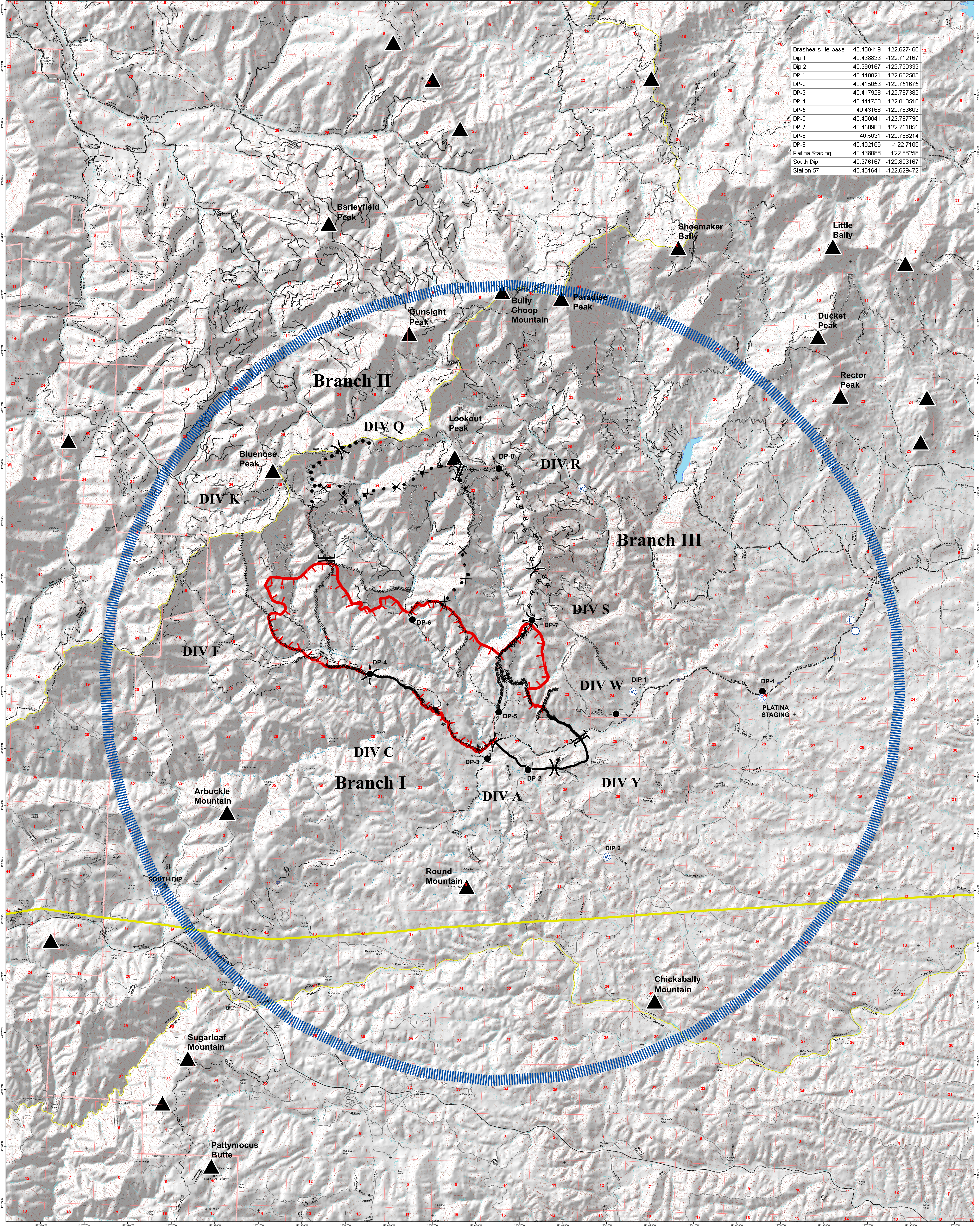


Brashears Helibase	40.458419	-122.627466
Dip 1	40.438833	-122.712167
Dip 2	40.390167	-122.720333
DP-1	40.440021	-122.862583
DP-2	40.415053	-122.751675
DP-3	40.417928	-122.767382
DP-4	40.441733	-122.813516
DP-5	40.43168	-122.763603
DP-6	40.458041	-122.797798
DP-7	40.458963	-122.751851
DP-8	40.5031	-122.766214
DP-9	40.432166	-122.7185
Platina Staging	40.438088	-122.66258
South Dip	40.376167	-122.893167
Station 57	40.461641	-122.629472



- () Division
- || Branch
- Drop Point
- Ⓢ Staging Area
- Ⓜ Water Source
- Completed Line
- ⊗ Completed Dozer Line
- ⊕ Uncontrolled Fire Edge
- ⊗ Proposed Dozer Line
- ⊖ Road As Completed Line
- Hand Line
- ▲ Summits
- Rainbow Lake
- 115 KV Transmission Lines
- |||| Temporary Flight Restriction

AIR OPERATIONS MAP

BULLY INCIDENT CA-SHU-006248 7/15/2014

Team 6 GIS 7/15/2014 03:07 Hours 1:24,000 NAD83

