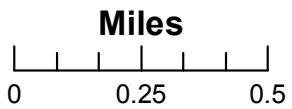
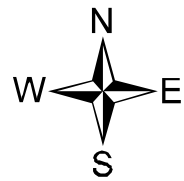


**Bully Incident
IAP Map
14CASHU006248
7/22/2014
NAD 83**

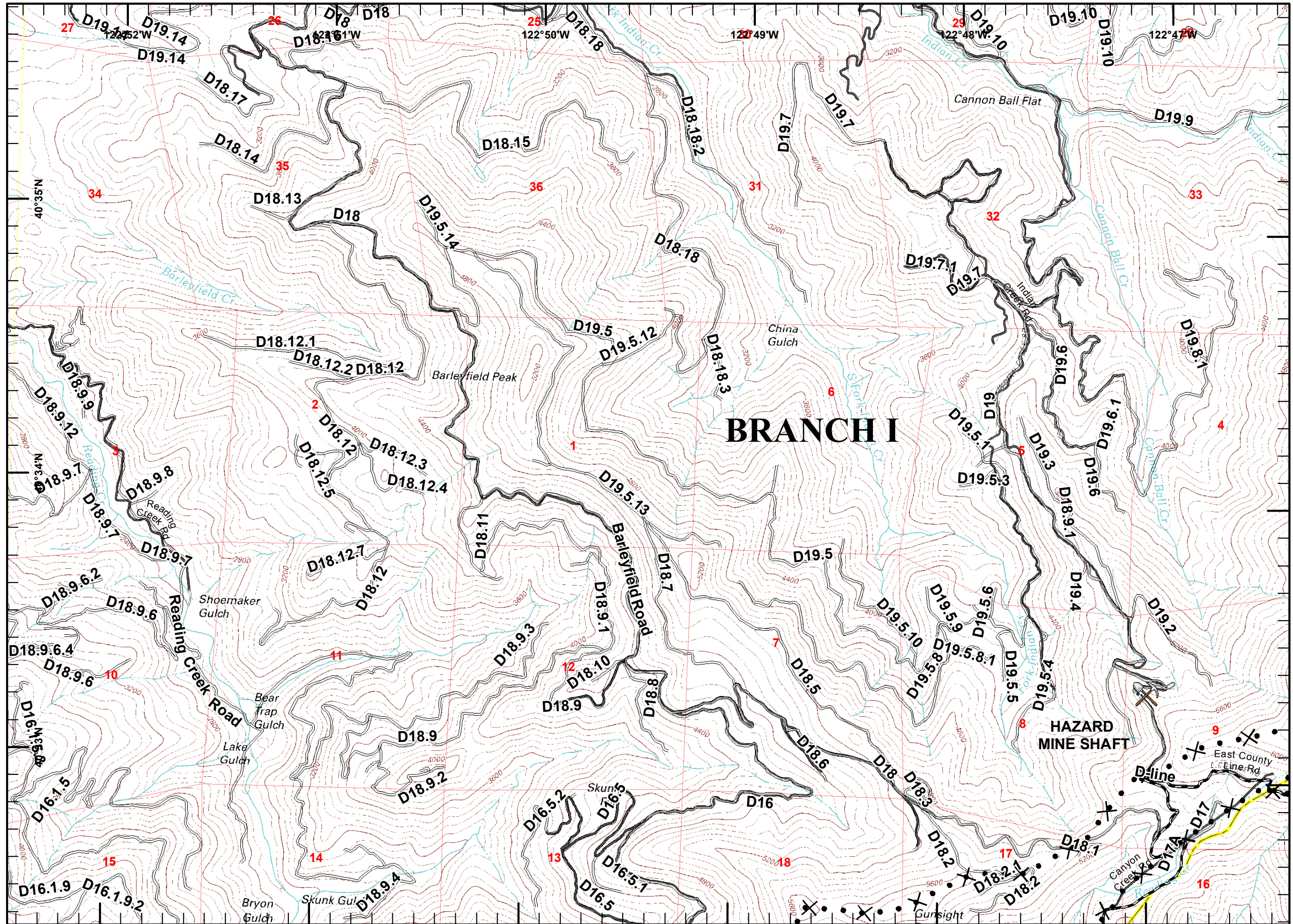


Page 1 of 9

- Fire Origin
- Staging Area
- Water Source
- Helispot
- Helibase
- Fire Station
- MediVac Site
- Division
- Branch
- Drop Point
- Completed Line
- Uncontrolled Fire Edge
- Completed Dozer Line
- Hand Line
- Planned Secondary Line
- Proposed Dozer Line
- Road as Completed Line



Team 6 GIS
July, 2014
17:21 hours

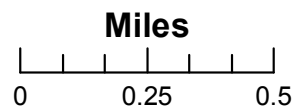
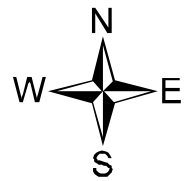


**Bully Incident
IAP Map
14CASHU006248
7/22/2014
NAD 83**

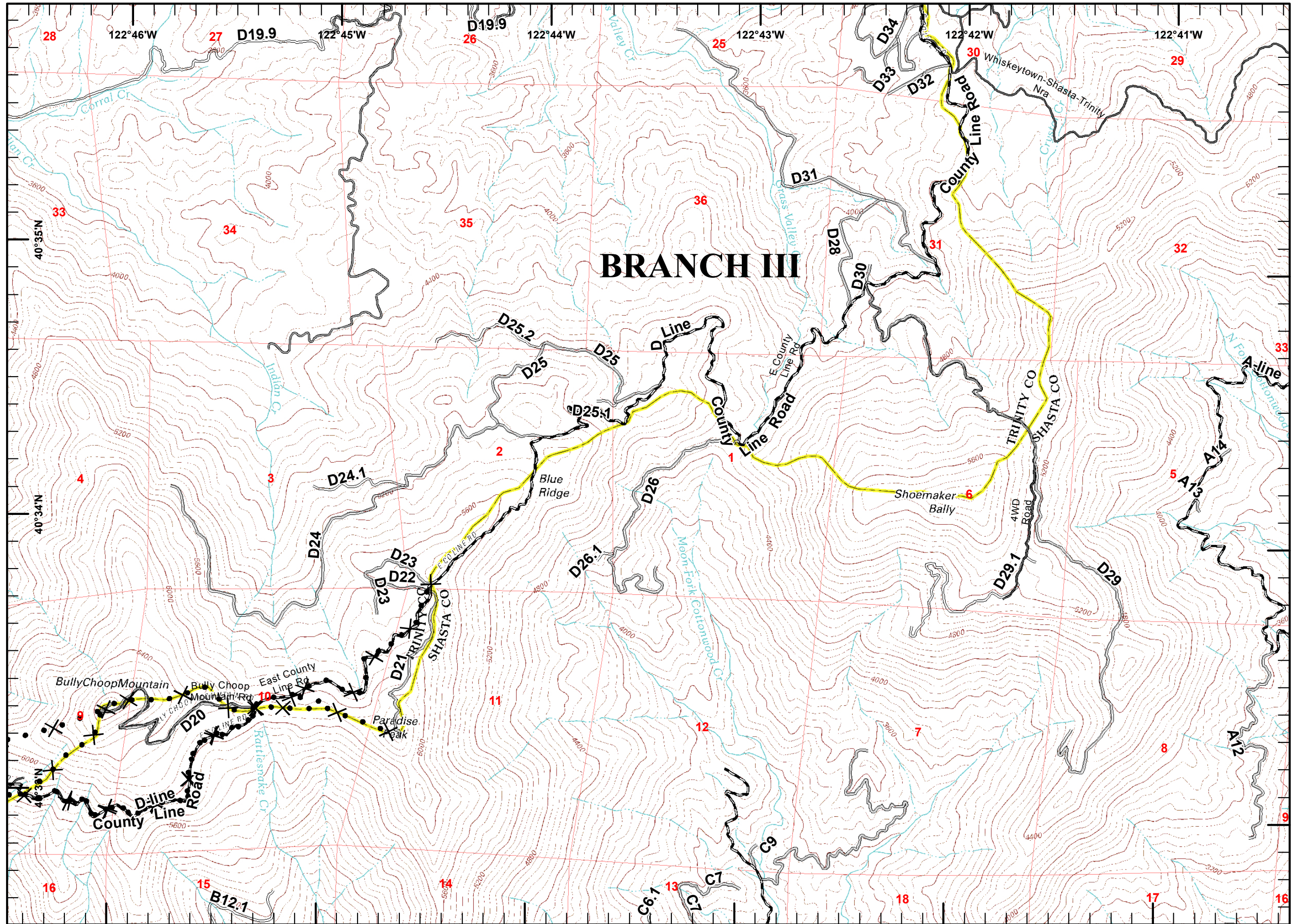


Page 2 of 9

- Fire Origin
- Staging Area
- Water Source
- Helispot
- Helibase
- Fire Station
- MediVac Site
- Division
- Branch
- Drop Point
- Completed Line
- Uncontrolled Fire Edge
- Completed Dozer Line
- H - H - Hand Line
- Planned Secondary Line
- Proposed Dozer Line
- R - R Road as Completed Line

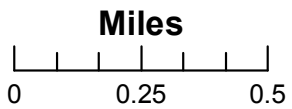
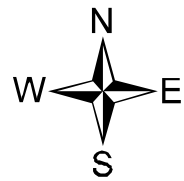


Team 6 GIS
July, 20 2014
17:21 hours

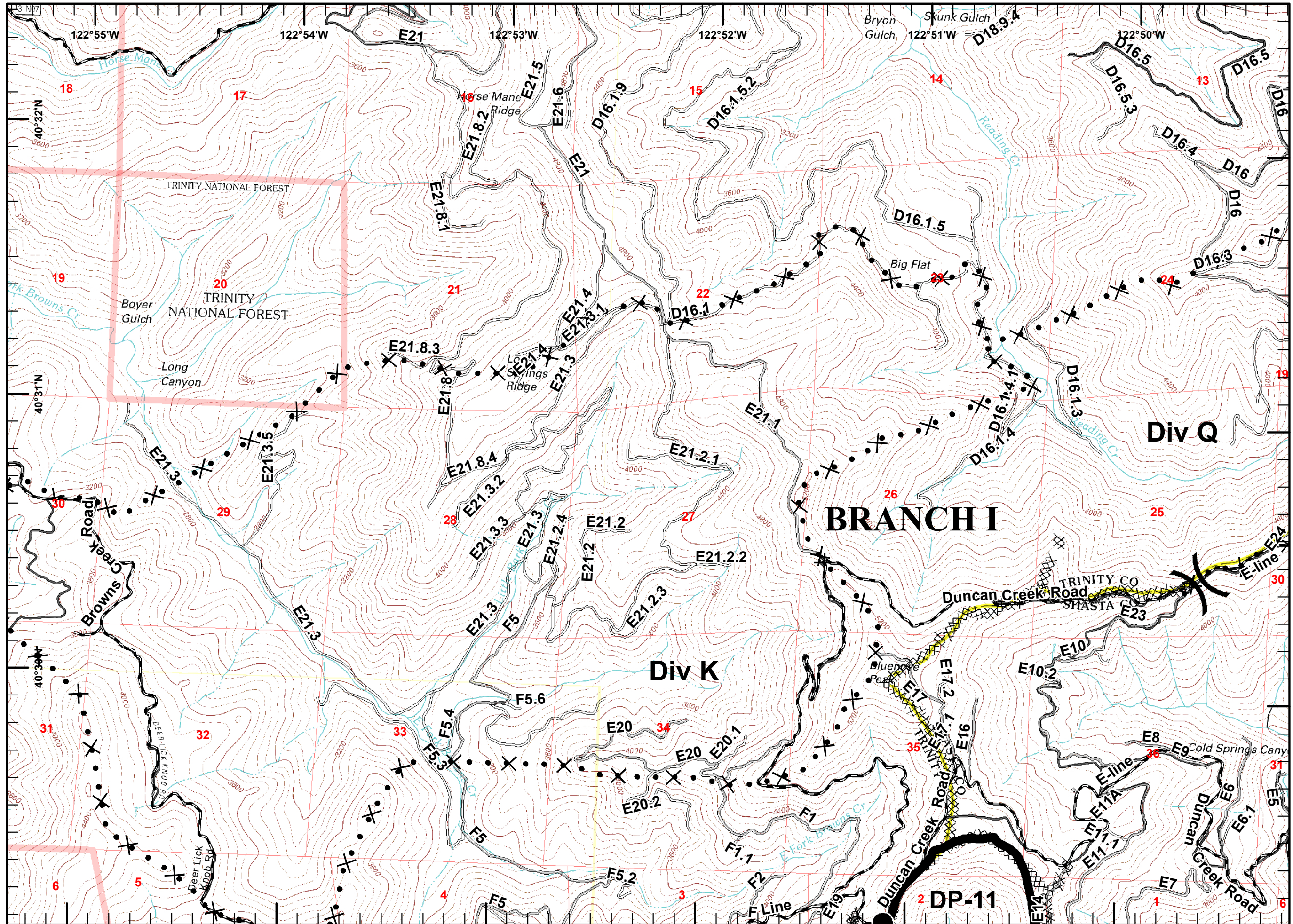




- Fire Origin
- Staging Area
- Water Source
- Helispot
- Helibase
- Fire Station
- MediVac Site
- Division
- Branch
- Drop Point
- Completed Line
- Uncontrolled Fire Edge
- Completed Dozer Line
- H - H - Hand Line
- Planned Secondary Line
- Proposed Dozer Line
- R - R Road as Completed Line

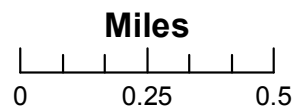
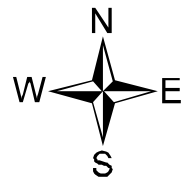


Team 6 GIS
 July, 20 2014
 17:22 hours

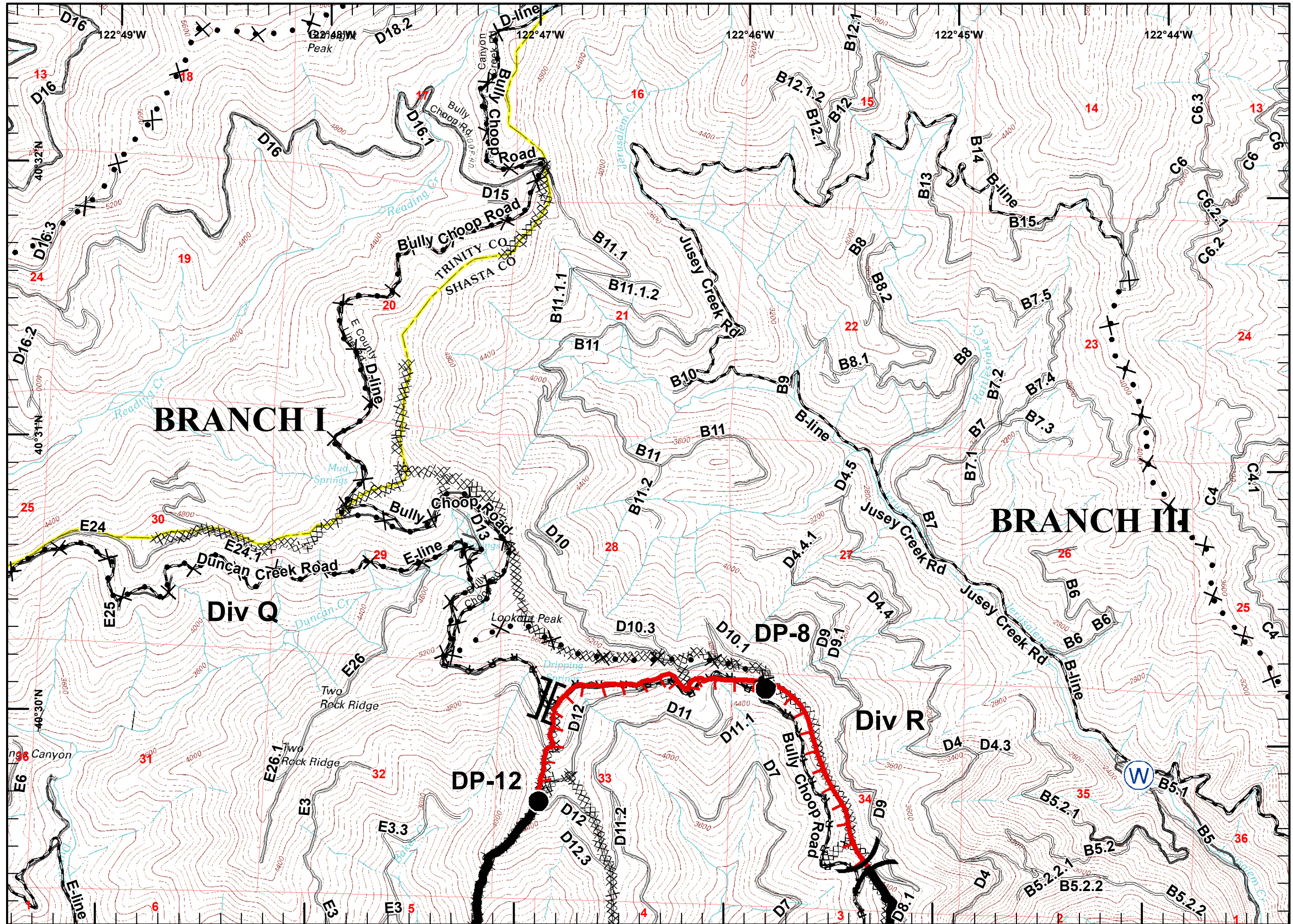




- Fire Origin
- Staging Area
- Water Source
- Helispot
- Helibase
- Fire Station
- MediVac Site
- Division
- Branch
- Drop Point
- Completed Line
- Uncontrolled Fire Edge
- Completed Dozer Line
- Hand Line
- Planned Secondary Line
- Proposed Dozer Line
- R - R Road as Completed Line



Team 6 GIS
 July, 2014
 17:22 hours

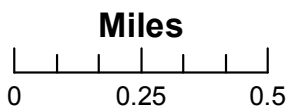
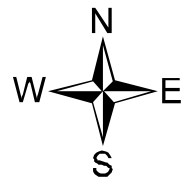


**Bully Incident
IAP Map
14CASHU006248
7/22/2014
NAD 83**

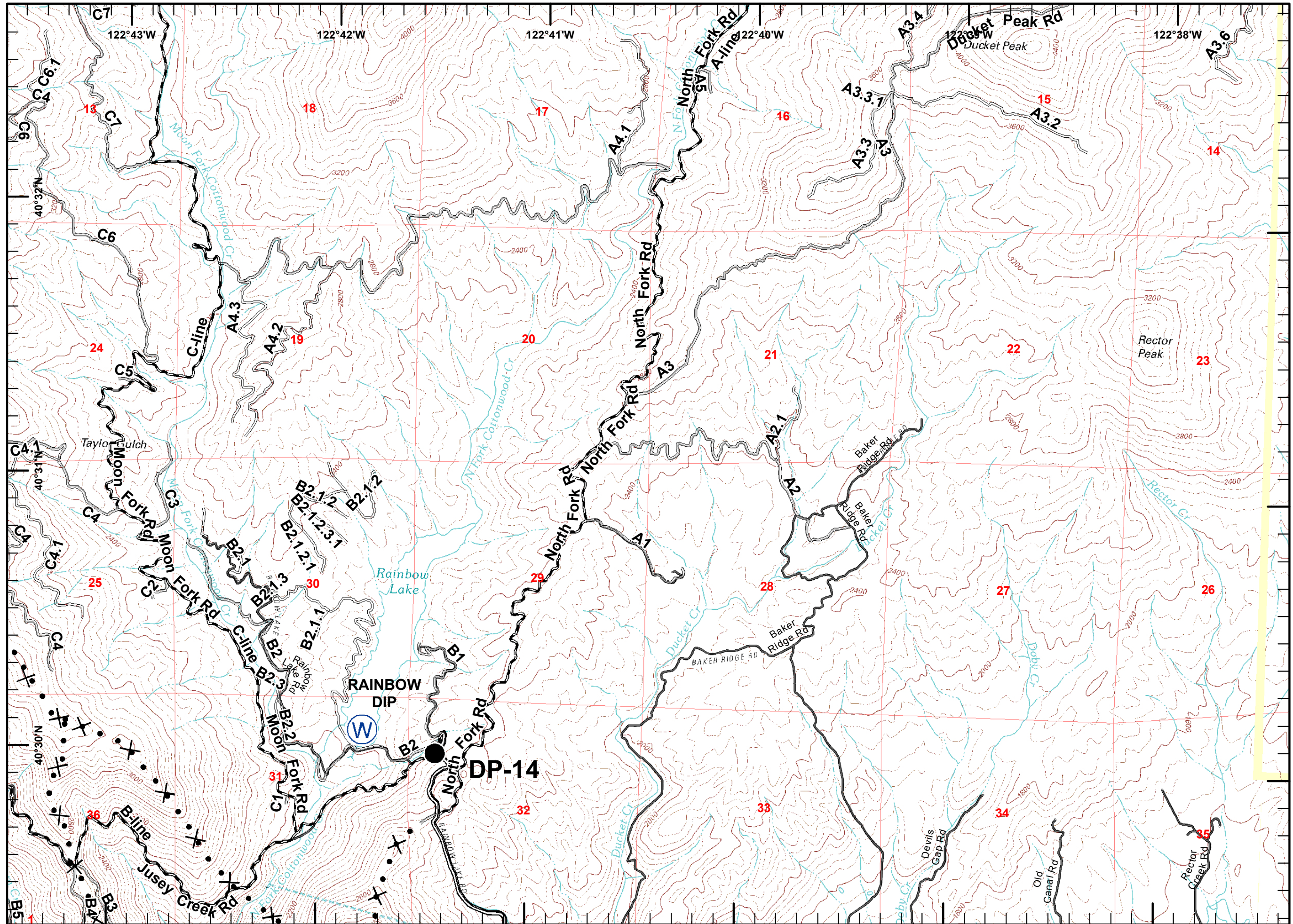


Page 5 of 9

- Fire Origin
- Staging Area
- Water Source
- Helispot
- Helibase
- Fire Station
- MediVac Site
- Division
- Branch
- Drop Point
- Completed Line
- Uncontrolled Fire Edge
- Completed Dozer Line
- Hand Line
- Planned Secondary Line
- Proposed Dozer Line
- R - R Road as Completed Line



Team 6 GIS
July, 2014
17:22 hours

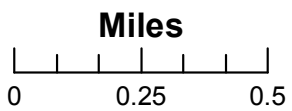
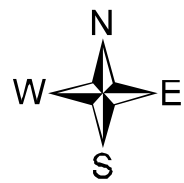


**Bully Incident
IAP Map
14CASHU006248
7/22/2014
NAD 83**

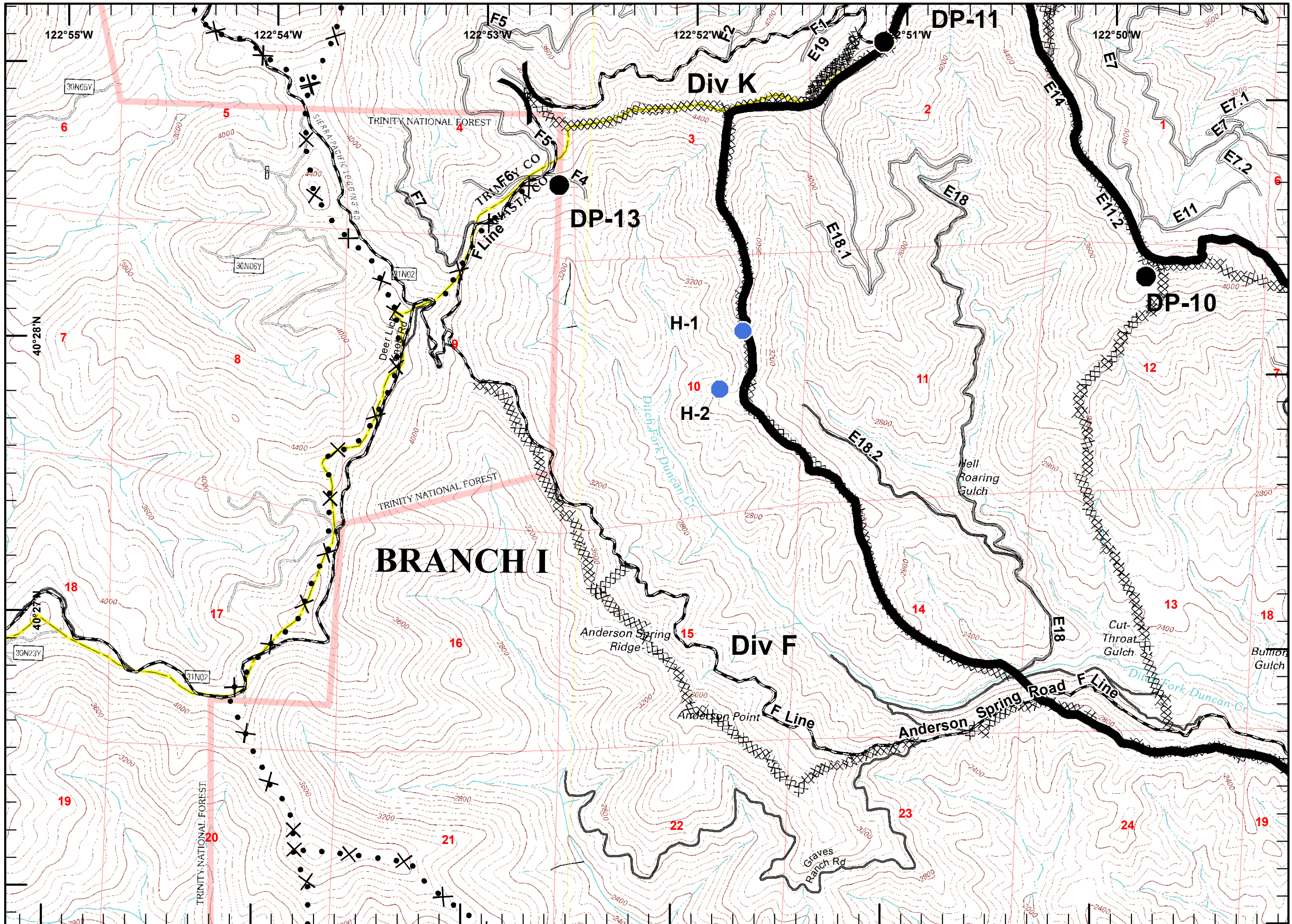


Page 6 of 9

- Fire Origin
- Staging Area
- Water Source
- Helispot
- Helibase
- Fire Station
- MediVac Site
- Division
- Branch
- Drop Point
- Completed Line
- Uncontrolled Fire Edge
- Completed Dozer Line
- H - H - Hand Line
- Planned Secondary Line
- Proposed Dozer Line
- R - R Road as Completed Line

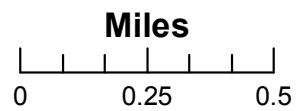
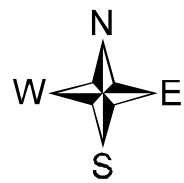


Team 6 GIS
July, 20 2014
17:22 hours

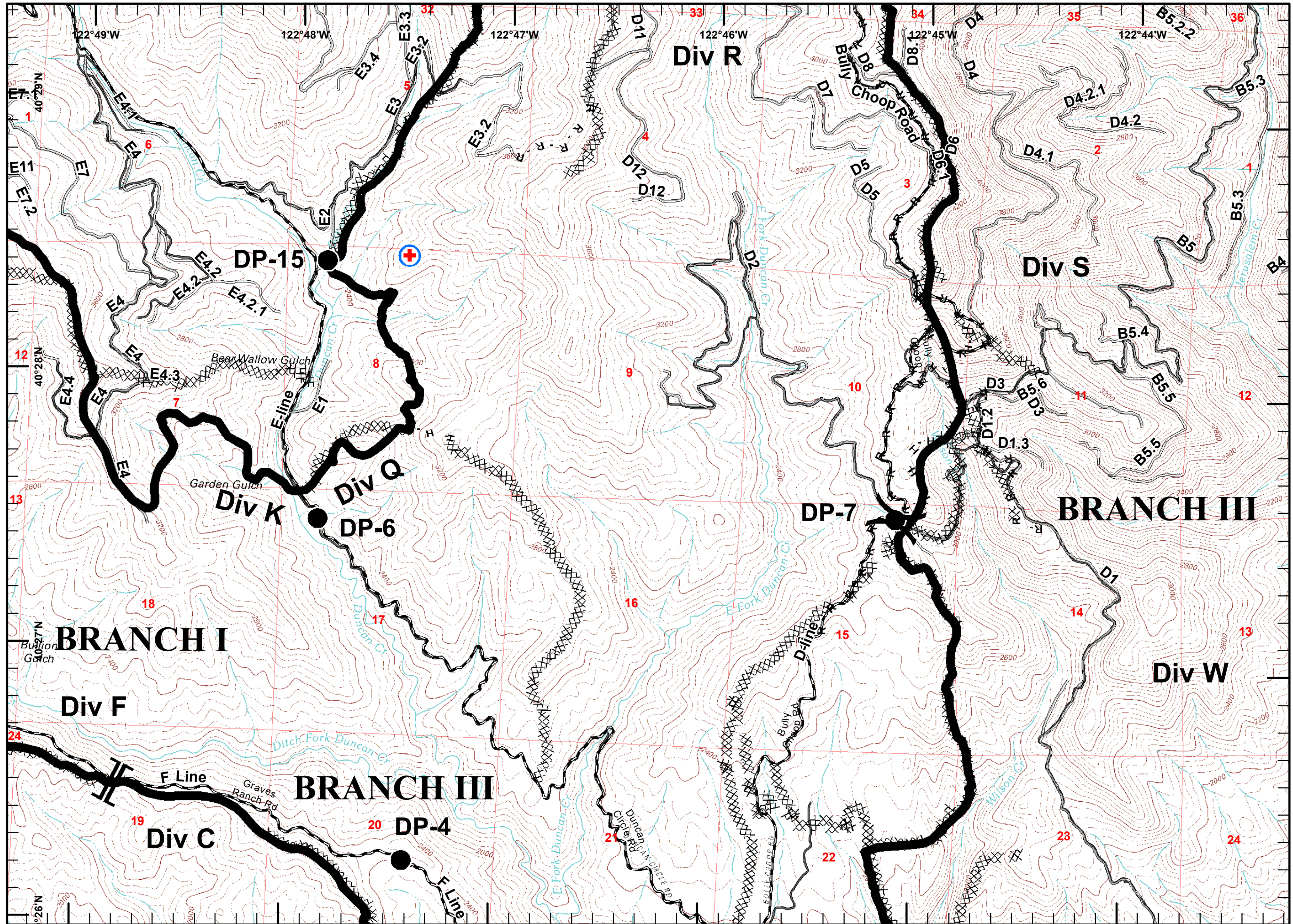




- Fire Origin
- Staging Area
- Water Source
- Helispot
- Helibase
- Fire Station
- MediVac Site
- Division
- Branch
- Drop Point
- Completed Line
- Uncontrolled Fire Edge
- Completed Dozer Line
- Hand Line
- Planned Secondary Line
- Proposed Dozer Line
- Road as Completed Line

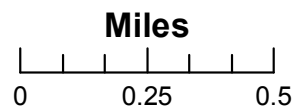
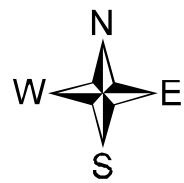


Team 6 GIS
 July, 20 2014
 17:22 hours

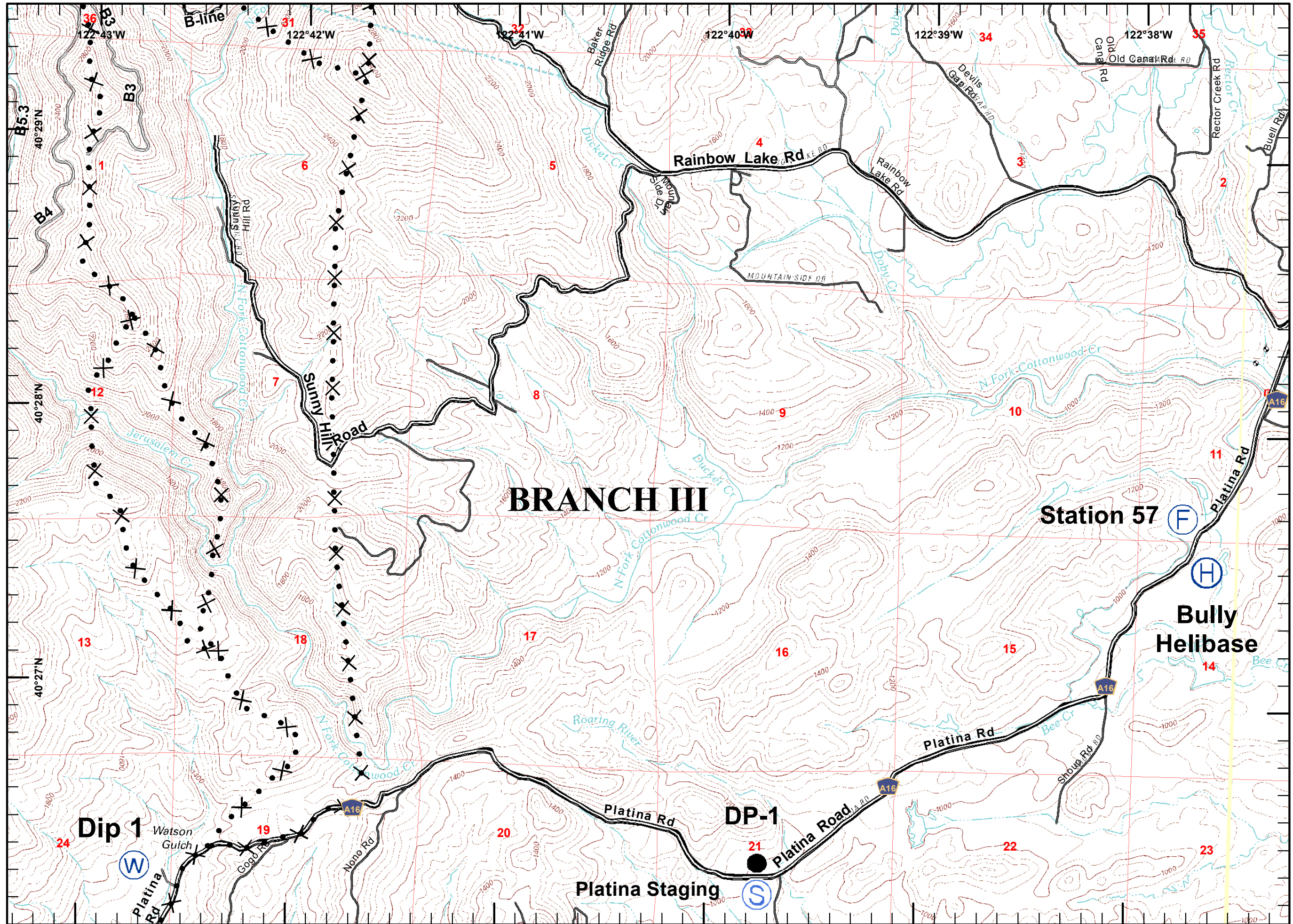




- Fire Origin
- Staging Area
- Water Source
- Helispot
- Helibase
- Fire Station
- MediVac Site
- Division
- Branch
- Drop Point
- Completed Line
- Uncontrolled Fire Edge
- Completed Dozer Line
- Hand Line
- Planned Secondary Line
- Proposed Dozer Line
- Road as Completed Line



Team 6 GIS
 July, 20 2014
 17:22 hours

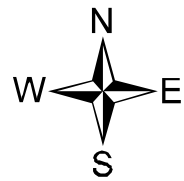


**Bully Incident
IAP Map
14CASHU006248
7/22/2014
NAD 83**

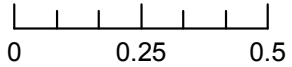


Page 9 of 9

- Fire Origin
- Staging Area
- Water Source
- Helispot
- Helibase
- Fire Station
- MediVac Site
- Division
- Branch
- Drop Point
- Completed Line
- Uncontrolled Fire Edge
- Completed Dozer Line
- H - H - Hand Line
- Planned Secondary Line
- Proposed Dozer Line
- R - R Road as Completed Line



Miles



Team 6 GIS
July, 20 2014
17:22 hours

