

SKU Lightning Complex

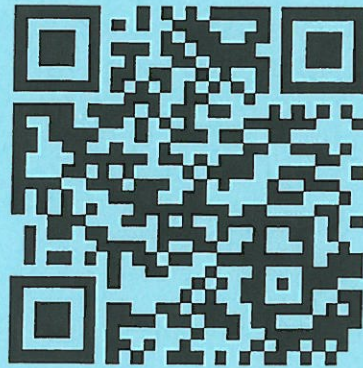
INCIDENT ACTION PLAN

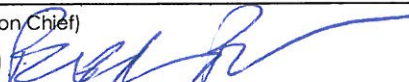
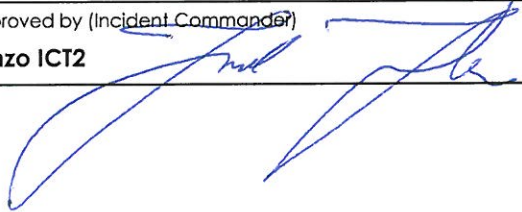
CA-SKU 005509

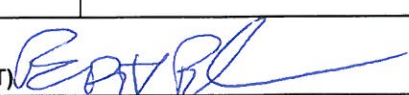
8/4/14 – 8/5/14

OPERATIONAL PERIOD

0700-0700



INCIDENT OBJECTIVES	1. Incident Name SKU Lightning Complex CASKU 005509	2. Date 08/03/14	3. Time 1900
4. Operational Period 08/04/14 – 08/05/14 0700-0700			
5. General Control Objectives for the incident (include alternatives) Management Objectives <ul style="list-style-type: none"> • Ensure safety for emergency personnel and the public. • Protect Infrastructure, private property and other improvements in and around the Siskiyou County. • Protect agricultural values, endangered species, natural and cultural resources. • Keep cost commensurate with values at risk. • Foster and Maintain Relationships with all Cooperators Federal/ State/ Local. • Keep Public Informed of incident activity and continue cooperation with private landowners. Control Objectives <ul style="list-style-type: none"> • Keep Fires within current containment lines. 			
6. Weather Forecast for Period See attached Spot Weather Forecast			
7. General Safety Message See attached Safety Message			
8. Attachments (mark if attached)			
<input checked="" type="checkbox"/> Organization List - ICS 203	<input checked="" type="checkbox"/> Medical Plan - ICS 206	<input checked="" type="checkbox"/> (Other)	
<input checked="" type="checkbox"/> Div. Assignment Lists - ICS 204	<input checked="" type="checkbox"/> Incident Map	<input type="checkbox"/>	
<input checked="" type="checkbox"/> Communications Plan - ICS 205	<input checked="" type="checkbox"/> Traffic Plan	<input type="checkbox"/>	
9. Prepared by (Planning Section Chief) Buddy Bloxham PSC1 (T) 	10. Approved by (Incident Commander) Phil Anzo ICT2 		


ORGANIZATION ASSIGNMENT LIST		9. Operations Section	
1. INCIDENT NAME		Chief	Darin Quigley
SKU Lightning CA-SKU-005509		Deputy	
2. Date	3. Time		
08/03/14	0100		
4. Operational Period		a	
8/4/14 - 08/5/14	0700-0700	Division/Group	North Patrol TBA
Position	Name	Division/Group	South Patrol TBA
5. Incident Commander and Staff		b. Branch II - Division/Groups	
Incident Commander	Phil Anzo	Division/Group	
Deputy		Division/Group	
Safety Officer	Linda Green	c. Branch III - Division/Groups	
Information Officer	Suzi Brady	Branch Director	
Information Officer	Jeff LaRuisso	Deputy	
Liaison Officer		Division/Group	
6. Agency Representative		Division/Group	
Agency	Name	Division/Group	
		d. Branch IV - Division/Groups	
		Branch Director	
		Deputy	
		Division/Group	
		Division/Group	
		Division/Group	
		Staging Area Manager	
7. Planning Section		Division/Group	
Chief	Josh Taylor	Division/Group	
Deputy	Buddy Bloxham (T)	Division/Group	
Resource Unit	Justin Petersen / Gabe Garcia Adam Mitchell / Bryan McEntire (T)	f. Air Operations Branch	
Situation Unit	Marshall Turbeville	Air Operations Branch Director	Matt Hill
Documentation Unit		Air Attack Supervisor	
Demobilization Unit	Dan Herndon	Air Support Supervisor	
Training		Helicopter Coordinator	
		Air Tanker Coordinator	
8. Logistics Section		10. Finance Section	
Chief	Larry Williams	Chief	Harper Keene
Deputy	Ken Lowe	Deputy	
Supply Unit	Scott Ernest	Time Unit	Kyle Lusted
Facilities Unit	Jesse Morris	Procurement Unit	Rose Leslie
Ground Support Unit	Jim Smith	Compensation/Claims Unit	Dale Barnett
Communications Unit	Allen Columbro	Cost Unit	Henry Ochs
Medical Unit	David Morrison		
Food Unit			
Motel Unit	Milford Ferguson / Sharon Long		
		Prepared by (Plans Section Chief)	
		Buddy Bloxham PSC1 (T)	



Little Deer/SKU Lightning Complex Fire Weather Forecast



FORECAST NO: 1
PREDICTION FOR: Dayshift
SHIFT DATE: Monday, 8/4/14
TIME AND DATE ISSUED: 8/3/14, 2000 PDT

INCIDENT: Little Deer/SKU Lightning Complex
UNIT: Siskiyou Unit, Cal Fire
SIGNED: 
Dan Borsum, Incident Meteorologist (IMET)

Discussion: A **Red Flag Warning** is in effect for thunderstorm activity today producing erratic outflow winds. Increasing moisture and unstable air will generate thunderstorm activity through the day. Humidity will be increasing by late afternoon, but storms will start with high bases and produce erratic outflow winds. Cloud cover combined with smoke will limit sunshine but temperatures will still be hot and approach 90. Expect humidity minimums to be closer to 20 percent. The moisture increases through the night into Tuesday with storm coverage increasing but a better chance for rainfall.

***** RED FLAG WARNING for thunderstorms with erratic outflow winds and lightning 11am Monday-2am PDT *****

WEATHER FORECAST for Monday, 8/4/2014:

SKY/WEATHER: Partly cloudy and smoky. Isolated thunderstorms.
Wind gusts to 40 mph possible from any thunderstorm.

MAX TEMPS : 85-90F. **24 Hour Trend: Down 3F.**

MIN RH: 16-21%. **24 Hour Trend: Up 5%.**

WINDS: * GUSTY & ERRATIC OUTFLOW WINDS IN AND NEAR THUNDERSTORMS *****

20 foot winds: 4 to 6 mph strongest gusting to 12 mph on west slopes in the afternoon.

24 Hour Wind Trend: Little change.

HAINES INDEX: 4 (Low).

MIXING HEIGHT: 2000 feet in the morning increasing to 8,000ft AGL in the afternoon.

LAL: 2 becoming 3.

CWR: 10%.

WEATHER FORECAST for Monday Night, 8/4/2014:

SKY/WEATHER: Mostly cloudy and smoky. Scattered showers and thunderstorms.

Wind gusts to 35 mph possible from any thunderstorm.

MAX TEMPS : 60-65F. **24 Hour Trend: Down 5F.**

MIN RH: 60-70. **24 Hour Trend: Up 15%.**

WINDS: * GUSTY & ERRATIC OUTFLOW WINDS IN AND NEAR THUNDERSTORMS *****

20 foot winds: Less than 5 mph.

24 Hour Wind Trend: Little change.

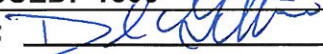
HAINES INDEX: 3 (Very Low).

MIXING HEIGHT: Decreasing to 2,000ft AGL by midnight.

LAL: 3 becoming 2.

CWR: 20%.

FIRE BEHAVIOR FORECAST

FORECAST NUMBER: 1	TYPE OF FIRE: Wildfire
FIRE NAME: SKU Lightning Complex	OPERATIONAL PERIOD: 0700-0700
DATE ISSUED: 8/4/14	TIME ISSUED: 1800
UNIT: Klamath NF	SIGNED: 
Typed/printed: David Greathouse FBAN	

INPUTS

WEATHER SUMMARY:

Thunderstorms Producing Strong Outflow Winds Possible Today

Review the fire weather forecast for details

OUTPUTS

FIRE BEHAVIOR

GENERAL:

Little Deer Fire:

This fire is burning mainly open Ponderosa Pine stands with grass on the surface littered with dead and down material. 2-4 high brush can be found on the South aspects throughout the fire area, as well as exposed lava flows on the East side of the fire. The fuels are dry. This area has been in persistent drought since the spring and the current ERC-G is trending well above average. 1000hr and 100hr fuel moistures are currently at 10% and 9% respectively.

The general fire behavior on this fire has been mainly surface fire through the grass and brush driven by the terrain and fuels. However, single tree/group torching and short crown runs with spotting up to 1000' has been observed. Fire activity has been observed to increase around Noon and continue until around 2100.

Maximum Fire Potential (Head Fire, 10%-30% Slope) Little Deer + Any New Starts

Timber: 8-14ch/hr, 4-5' Flame Lengths

Shrub: 8-12ch/hr, 4-5' Flame Lengths

Spotting potential: 1000', Probability of ignition of 90%

SPECIFIC:

Little Deer Fire:

Division A: The fire will continue to back toward the East away from Little Deer Mountain. However be prepared for a strong push toward the southeast if there is enough convective development above the fire to influence the fire behavior.

Division B: The fire will continue to move toward the Dozer line, Potentially making it towards the dozer line by the end of shift. With the predicted wind direction, be heads up for spot fires on your division.

Division Y: Excellent suppression efforts have held this line. However with the predicted wind direction, be heads up for spot fires. Also, pay close attention to heavy fuels as mop up progresses, they have the potential to hold heat for several days

Division Z: The fire will continue to progress towards Highway 97 and the A/Z break. Be prepared for a strong push towards the highway if there is enough convective development above the fire to influence the fire behavior.

New Fire Starts:

With today's weather forecast, expect any new starts to establish themselves quickly in receptive fuels, with the potential for rapid uphill runs, single tree / group tree torching, spotting and short crown runs.

AIR OPERATIONS:

Visibility may be limited due to smoke
Be heads up for Thunderstorm downdrafts

SAFETY:

With the possibility of thunderstorms in the area, take some time to review thunderstorm safety in your IRPG

Fuels and Fire Behavior Advisory

Northern California

July 23, 2014



Subject: Long term drought conditions along with hot and dry weather have led to very low live and dead fuel moistures. Weather and fuels conditions are contributing to active to extreme fire behavior and above normal large fire potential for Northern California.

Discussion: The extremely dry and warm conditions of April, May and June combined with the extreme to exceptional drought conditions have led to low live and dead fuel moistures. Lack of winter snow cover exposed much of the upper elevation fuels to drying conditions weeks and even months sooner than normal. Grasses have fully cured across low and middle elevations and have begun curing at upper elevations.

Difference from normal conditions: Live and dead fuel moistures are approximately 6 weeks ahead of normal and typical of mid-August. Extreme to exceptional drought, the highest levels on the Drought Monitor system now cover nearly the entire North state. Live fuel moistures never reached typical seasonal maximums and are rapidly moving toward critical levels. All timelag classes of dead fuels are at moisture levels that allow for easy ignition and rapid spread.

Concerns to Firefighters:

- **Expect fires to ignite easier and spread faster due to low live and dead fuel moistures.** Recent fires have shown almost complete consumption of large dead fuels. **Expect higher probability of ignition and increased spotting** due to increased amount of receptive and available surface and aerial fuels.
- Energy Release Component (ERC) is a good indicator of seasonal drying trends. **Current ERC values are reaching maximum seasonal values or setting record highs** for all Predictive Service Areas (PSA) with the exception of the North Coast PSA. **Anticipate increased spread rates and active night time burning.**
- Anticipate higher resistance to control in all fuel types. **When critical fire weather conditions exist expect active to extreme fire behavior.**

Mitigation Measures:

- Firefighters should acknowledge and prepare for fire growth and fire behavior that may exceed anything they have experienced before due to the extreme drought. **Normal strategies and tactics may need to be adjusted to account for the drought factor. Suppression actions need to be based on good anchor points, lookouts, communications, escape routes, and safety zones.**
- Local and incoming fire personnel need to be aware that fire behavior is exceeding normal expectations for this time of the year. **Local briefings need to highlight specific fire environment conditions including local weather forecasts, Pocket Cards, ERC's, live and dead fuel moistures, and special fuel conditions such as mortality, Sudden Oak Death and frost killed brush, etc.**
- Base all actions on current and expected behavior of the fire. **Augment initial attack resources as incident activity dictates.**
- Review the most current Northern California 7-day Significant Fire Potential along with Daily, Monthly and Seasonal Outlooks at: [Predictive Services Outlooks & Fire Potential](#)

Area of Concern: The area of concern is Northern California exception of North Coast PSA. A map showing the areas of concern described in this advisory can be found at: [National Fuels & Fire Behavior Advisories](#)

SISKIYOU LIGHTNING

CA SKU 005509

August 4, 2014 0700-0700

Fire Behavior

- Isolated thunderstorms can produce heavy OUTDRAFT WINDS.
- Expect EXTREME FIRE BEHAVIOR if this happens.

Safety Zones

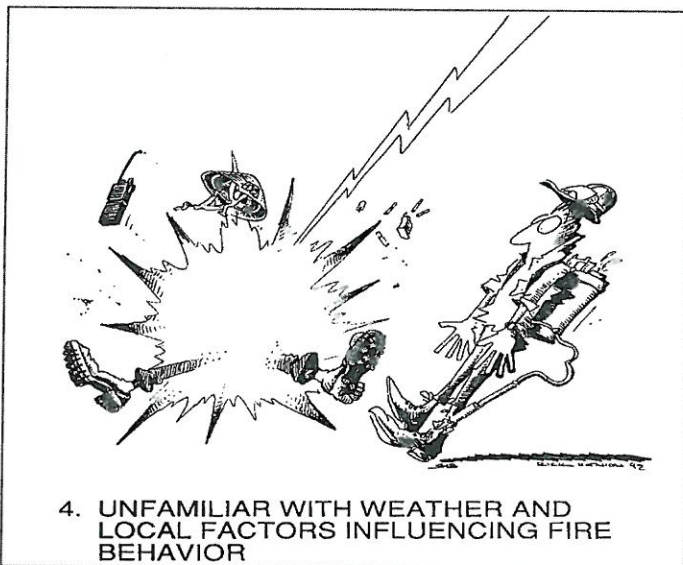
- Know your Safety Zones.
- Base your DECISION POINTS on EXTREME fire behavior!


Personal Protective Equipment

- PPE must be worn at all times while on the incident.
- It does you no good if you do not use it.

Complacency

- Several large fires in the past 30 days.
- Nothing is ROUTINE!
- Monitor your fatigue levels.




LINDA GREEN 
INCIDENT SAFETY
OFFICER

S
A
F
E
T
Y

S
A
F
E
T
Y

S
A
F
E
T
Y

I
T
'
S
U
P
P
O
R
T
Y
O
U
!

INCIDENT RADIO COMMUNICATIONS PLAN		Incident Name: SKU Lightning Complex				Date/Time Prepared: Aug 2, 2014 1920 hrs	Operational Period: 24HR 0700-0700 08/04/14				
Ch #	Function	Channel Name	Assignment	RX Freq N or W	RX Tone/NAC	TX Freq N or W	Tx Tone/NAC	Mode	Remarks		
1	COMMAND	SKU LOCAL	N/S PATROL	151.3250 N	156.7	159.3600 N	OST	A	Use Tone 6		
2	TACTICAL	CDF TAC 9	N/S PATROL	151.3850 N	192.8	151.3850 N	192.8	A			
3	COMMAND	CDF C4	LITTLE DEER	151.4000 N	103.5	159.3750 N		A	USE Tone 15		
4	COMMAND	KNF SAGE	LITTLE DEER	172.3250 N		173.7625 N		A	Use Tone 8		
5	TACTICAL	VFIRE 22	DIV A	154.2650 N	156.7	154.2650 N	156.7	A			
6	TACTICAL	VFIRE 23	DIV Z	154.2950 N	156.7	154.2950 N	156.7	A			
7	TACTICAL	VTAC 11	DIV B	151.1375 N	156.7	151.1375 N	156.7	A			
8	TACTICAL	VTAC 12	DIV Y	154.4525 N	156.7	154.4525 N	156.7	A			
9	TACTICAL	VTAC 13	HWY GROUP	158.7375 N	156.7	158.7375 N	156.7	A			
10	TACTICAL	VFIRE 21	WEED/YREKA STAGING	154.2800 N	156.7	154.2800 N	156.7	A	IN STAGING USE		
11	TACTICAL	VTAC 14	RESERVE	159.4725 N	156.7	159.4725 N	156.7	A			
12	TACTICAL	NIFC TAC 2	RESERVE	168.2000 N		168.2000 N		A			
13	Air to Grnd	Air to Ground	AIR TO GRND	165.4125 N		165.4125 N		A			
14	MEDICAL	CALCORD	Incident Wide	156.0750 N	156.7	156.0750 N	156.7	A	MEDICAL COORD.		
15	Reserved	CDF C1	Incident Wide	151.3550 N	103.5	159.3000 N		A			
16	Emergency	GUARD	EMERGENCY	168.6250 N		168.6250 N	110.9	A	TONE 1 ON TX		
17											
18											
19											
20	Emergency	GUARD	EMERGENCY	168.6250 N		168.6250 N	110.9	A	TONE 1 ON TX		
BY: Allen J Columbro, COMML CAL FIRE				Incident Location		State		Latitude		Longitude	

The convention calls for frequency lists to show four digits after the decimal place, followed by either an "N" or a "W", depending on whether the frequency is narrow or wide band. Mode refers to either "A" or "D" indicating analog or digital (e.g. Project 25). All channels are shown as if programmed in a portable or mobile radio. Repeater and base stations must be programmed with the Rx and Tx reversed.

MEDICAL PLAN ICS 206

1. INCIDENT NAME

SKU Lightning

2. DATE
PREPARED
08/3/2014

3. TIME
PREPARED
1500

4. OPERATIONAL PERIOD
08/4/2014 0700 -
08/5/2014 0700

5. INCIDENT MEDICAL AID STATIONS

MEDICAL AID STATIONS	LOCATION	PARAMEDICS	
		YES	NO
NONE	N/A		

6. TRANSPORTATION

A. AMBULANCE SERVICES

NAME	LOCATION	PHONE	PARAMEDICS	
			YES	NO
Mt. Shasta Ambulance	1020 Oak St. Mt Shasta	530-926-3420	X	
CHP H-20 – Placer County	Night flight capable – Day hoist only	Line emergency procedure		X
Reach 5 - Redding	Night flight capable	Line emergency procedure	X	

B. INCIDENT AMBULANCES

NAME	LOCATION	PARAMEDICS	
		YES	NO
None	N/A		

7. HOSPITALS

NAME Med Net Channel	ADDRESS	TRAVEL TIME		PHONE	HELIPAD		BURN CENTER	
		AIR	GRND		YES	NO	YES	NO
Fairchild Medical Center Lvl 3 trauma	444 Bruce St. Yreka	5	10	209-966-3631	X			
Mercy Medical Center Lvl 3 trauma	914 Pine St, Mt. Shasta	15	40	530-926-6111	X			
UCD Medical Center Lvl 1 Trauma – Burn Ctr	2315 Stockton Blvd, Sacramento	1.20	4.30	916-734-3636	X		X	

8. MEDICAL EMERGENCY PROCEDURES

EMERGENCY FREQUENCY: GUARD – 168.6250 N Tone 1

LINE EMERGENCY:

Crew Supervisor will contact Division Supervisor with patient complaint/condition and location.

- Division/Group Supervisor contacts:
 1. Closest EMS resource
 2. Communications Unit
- Communications Unit contacts:
 1. Ground or Air ambulance as requested
 2. Operations
 3. Safety
 4. Medical Unit
- Division Supervisor or designee will serve as point of contact and run medical emergency on assigned channel.
 1. A pre-assigned tactical frequency (i.e. CALCORD) should be used for IWI and only for duration of need.
- Communications Unit will clear command channel for emergency traffic as needed and only for duration of need.

CAMP EMERGENCY:

Contact Medical Unit with patient complaint/condition and location. Medical Staff will respond to stabilize incident:

- Medical Unit contacts:
 1. Communications
 2. Safety
 3. Logistics
 4. Operations
 5. Crew Supervisor
 6. Comps/Claims

INJURY REPORTING PROCEDURES

NATURE OF INJURY _____
 LOCATION OF PATIENT _____
 POINT OF CONTACT _____
 TRANSPORTATION REQUESTED BY: AIR ___ GROUND ___
 POINT OF PICKUP _____
 LAT _____ LONG _____
 PATIENT UNIT ID _____
 IS A PARAMEDIC WITH PATIENT: YES ___ NO ___
 AGE _____
 SEX: MALE ___ FEMALE ___

**ALL EMERGENCIES---Secure the area
and identify witnesses for later
investigation. Keep an accurate log of
events.**

ICS 206

9. PREPARED BY: (Medical Unit Leader)
David Morrison MEDL

10. REVIEWED BY: (Safety Officer)

SISKIYOU UNIT

SECTION: 8100 Command and Control SUBJECT: Incident Access and Accountability

EFFECTIVE DATE: June 16, 2010 SUPERCEDES POLICY:

AUTHORIZATION SIGNATURE: Jim Sweet

INTENT:

The intent of this policy is to establish a means by which ALL lightning fires or small remote fires in the SKU are flagged in a similar manner for access and accountability. This policy shall also apply to cover units.

POLICY:

Standardization in identifying incident locations within Siskiyou Unit is necessary to provide for assurance of timely incident re-checks, incident status and incident accountability. All SKU units and all cover units working in SKU shall utilize this policy.

PROCEDURE:

Incidents requiring access by foot (i.e. lightning fires, or small remote fires) shall be flagged with 1 ¼ wide orange ribbon "flagging". This procedure will allow for positive follow-up by other ground forces. Flagging is available via the SKU Service Center.

Flagging routes into incidents:

1. Foot routes into incidents should be flagged in the following manner.
 - a. Begin the route with three (3) strips of flagging, approximately 2 ½ feet long tied in a "bundle". This three-strand bundle will readily identify the beginning of foot access from a road, skid trail, or other access point.
 - b. Incident information will be written on the flagging (bundle) with a felt tip pen or grease pencil, with the following minimum information being recorded:
 - i. Incident name (i.e. 3-2)
 - ii. Date of fire/check (i.e. 8/12/2004)
 - iii. Lat. /Long. of incident location
 - iv. Distance to incident (approximate)
 - v. Initials of company officer recording information and the engine number
 - c. Flag line should be easily visible from entry or exit directions (look back while flagging to assure a flag line that can be easily followed by other ground forces).
2. Fire Road signs will continue to be used to mark vehicle access routes into incidents.
3. At the close of the incident, remove all flagging and road signs. This will minimize confusion when locating future incidents.
4. A copy of this policy and required material shall be provided to out of the unit cover resources as part of station cover crew guides or during operational briefings.

EMERGENCY SHIFT TICKET and EVALUATION FORM

The responsible Government Officer will complete this form each shift.

Incident or Project Name Wild		Incident Number CALNU 123456	Request Number E-59	Contractor Name Fireline Builders	
Agreement Number LNU01234567		Equipment Model / Type Dozer D6H		Operator #1 Jim Smith	Operator #2 John Jones
Equipment Make CAT		License Number 6LN3344		Operator Furnished By: <input checked="" type="checkbox"/> Contractor <input type="checkbox"/> Government	
Equipment Use Division B.		Assignment Released / Travel Out		Operating Supplies Furnished By: <input checked="" type="checkbox"/> Contractor <input type="checkbox"/> Government	
Date		(Circle) Hours / Days / Miles		Equipment Status <input checked="" type="checkbox"/> Inspected <input type="checkbox"/> Released by Government <input type="checkbox"/> Under Agreement	
Mo / Day	Start	Stop	Work	Withdrawn by Contractor	
7/18	0800	1600	8		
7/18	1600	2000	2		
Remarks/Comments ** 2 Operators Released @ 1600 <i>FIRE / BRANCH / DIVS</i>					
Vendor Rating					
Met Performance Expectations		Poor*	Avg.	Good	Exc.
Equipment In Safe Working Condition					N/A
Operator Skill Level		Vendor Rating must be done.			
Operator Safety					
Operator's Cooperation Level					
Overall Performance		Date 07/18/08		Time 1800	
Govt. Rep. Name and Position - PRINT Matt Sullivan, HETS		Govt. Rep. Signature Matt Sullivan		Contractor Signature John Jones	

* NOTE: Any rating of POOR requires an explanation in Comment Section.

** Final evaluation or for more documentation, use an ICS Form 230 or equivalent.

Pink - Finance

Blue - Home Unit HE Coordinator

Yellow - Vendor

White - Govt Representative

CALFIRE 297

(REV 3-2011)

EMERGENCY SHIFT TICKET and EVALUATION FORM

The responsible Government Officer will complete this form each shift.

Incident or Project Name Wild		Request Number E-59		Contractor Name Fireline Builders											
Agreement Number LNU01234567		Equipment Model / Type Dozer D6H		Operator #1 John Jones											
Serial Number 6LN3344		Licence Number		Operator Furnished By: <input checked="" type="checkbox"/> Contractor <input type="checkbox"/> Government											
Equipment Make CAT		Equipment Status <input checked="" type="checkbox"/> Inspected <input type="checkbox"/> Released by Government <input type="checkbox"/> Withdrawn by Contractor		Operating Supplies Furnished By: <input checked="" type="checkbox"/> Contractor <input type="checkbox"/> Government											
Date Mo / Day		Start		Stop											
7/17		0800		2400											
7/18		0001		0800											
Work		Days / Miles		Assignment											
16		Division B		Division B											
8		Division B		Division B											
<p>2 Operators</p> <p><i>FIRE/BRANCH / DIVS</i></p>															
Remarks/Comments **															
<p>Govt. Rep. Name and Position - PRINT Steve Hampton, Div B</p> <p>Govt. Rep. Signature <i>Steve Hampton</i></p> <p>Contractor Signature <i>Jim Smith</i></p> <p>Date 07/18/12 Time 0800</p>															
<p>Vendor Rating</p> <table border="1" style="width:100%; border-collapse: collapse;"> <tr> <td>Poor*</td> <td>Avg.</td> <td>Good</td> <td>Exc.</td> <td>N/A</td> </tr> <tr> <td></td> <td></td> <td></td> <td></td> <td></td> </tr> </table> <p>Vendor Rating must be done.</p>						Poor*	Avg.	Good	Exc.	N/A					
Poor*	Avg.	Good	Exc.	N/A											
<p>Met Performance Expectations</p> <p>Equipment In Safe Working Condition</p> <p>Operator Skill Level</p> <p>Operates Safely</p> <p>Operator's Cooperation Level</p> <p>Overall Performance</p>															

* NOTE: Any rating of POOR requires an explanation in Comment Section.
 ** Final evaluation or for more documentation, use an ICS Form 230 or equivalent.

Pink - Finance

Blue - Home Unit HE Coordinator

Yellow - Vendor

White - Govt Representative

CAL FIRE 287
(Rev 3-2011)

2 operator, 24 hour shift

EMERGENCY SHIFT TICKET and EVALUATION FORM									
The responsible Government Officer will complete this form each shift.									
Incident or Project Name		Request Number		Contractor Name		Operator #1		Operator #2	
Wild		E-59		Fireline Builders		Jim Smith		John Jones	
Agreement Number		Incident Number		Operator Furnished By:		Contractor		Government	
LNU01234567		CALNU 123456		Dozer D6H		X		Government	
Equipment Make		Equipment Model / Type		Operating Supplies Furnished By:		Contractor		Government	
CAT		Dozer D6H		Government		X		Government	
Serial Number		License Number		Equipment Status		Contractor		Government	
6LN3344				X		X		Under Agreement	
Date		Start		Stop		Work		Assignment	
Mo / Day		(Circle) Hours		Days / Miles		Assignment			
7/16		1300		1500		2		Travel In	
7/16		1500		2400		9		Division B	
7/17		0001		0800		8		Division B	
Remarks/Comments **									
2 Operators FIRE / BRANCH / DIVS									
Govt. Rep. Name and Position - PRINT		Govt. Rep. Signature		Contractor Signature		Date		Time	
Mike Brown, Div B		Mike Brown		Jim Smith		07/17/12		0800	
Vendor Rating		Poor*		Avg.		Good		Exc.	
N/A									
Vendor Rating must be done.									
* NOTE: Any rating of POOR requires an explanation in Comment Section.									
** Final evaluation or for more documentation, use an ICS Form 230 or equivalent.									

Pink - Finance

Blue - Home Unit HE Coordinator

Yellow - Vendor

White - Govt Representative

CALFIRE 287
(Rev 3-2011)

1 operator, 12 hour shift

EMERGENCY SHIFT TICKET and EVALUATION FORM									
The responsible Government Official will complete this form each shift									
Incident or Project Name		Incident Number		Request Number		Contractor Name			
Wild		CALNU 123456		E-61		We Build Line			
Agreement Number		Equipment Model / Type		Operator #1		Operator #2			
LNU76543210		Dozer D6N		E-61		Jason Ferguson			
Equipment Make		Licence Number		Operator Furnished By:		Government			
CAT		3BG0236		Contractor		Government			
Serial Number		Equipment Use		Operating Supplies Furnished By:		Government			
3BG0236		Equipment Use		Contractor		Government			
Date		Start		Stop		Work		Equipment Status	
Mo / Day		Start		Stop		Work		Inspected	
7/17		0001		0800		8		Released by Government	
7/17		0800		2000		12		Withdrawn by Contractor	
7/17		2000		2400		4		Remarks/Comments **	
								1 Operator	
								FIRE / BRANCH / DIVS	
Vendor Rating		Poor*		Avg.		Good		Exc.	
Vendor Rating								N/A	
Must be done.		Met Performance Expectations		Equipment In Safe Working Condition		Operator Skill Level		Operator's Safety	
								Steve Hampton, Div B	
								Steve Hampton	
								Jason Ferguson	
								Date	
								07/17/12	
								Time	
								2000	

* NOTE: Any rating of POOR requires an explanation in Comment Section.

** Final evaluation or for more documentation, use an ICS Form 230 or equivalent.

Pink - Finance

Blue - Home Unit HE Coordinator

Yellow - Vendor

White - Govt Representative

CALFIRE 297

(Rev 3-2011)

FIRING OPERATION CHECKLIST

Location: _____

Date: _____ Time: _____

Firing Supervisor _____

1. Personnel Briefing

- Objectives
- Conditions (fire environment)
- Resource assignments identified
 - Firing personnel
 - Holding forces
 - Lookouts
- Ignition plan/sequence
- Communication Plan
- Contingency Plan
- Safety issues

2. Go / No-Go

- All personnel briefed
- Weather forecast reviewed
- Resources in place
- Lookouts posted as needed
- Anchor and termination firing points identified
- Communications systems in place
- Fire behavior forecast reviewed
- Escape routes and safety zones established and made known
- Adjoining forces/Air Attack notified

3. Approval Prior To Firing

- Division Supervisor
- Branch Director
- Operations

4. Other Notifications

- Other: _____
- Other: _____

Attach Firing Operations Checklist to ICS-214

Instructions for Use of CDF 101 Property Certification of Location or Damage

Document Number: for use as a local number system or when attached to a FC-40 document.

Location / Incident Name: Enter the CDF facility property is assigned to. If submitting to an incident base, enter the Incident Name.

Incident Number: Enter the appropriate incident number

Unit: Enter the Unit the property is assigned to. If submitting to an incident base, enter the request number of the person certifying damage example E-320, C-14 or O-355.

Region: Enter the CDF Region where the property was assigned. If submitting to an incident base, enter the CDF Region responsible for the incident.

Date: Enter the date the P.L. or D. was completed.

The following items were: Enter either 'Broken', 'Left on Line', 'Damaged' or other status of the property.

Reminder, this form cannot be used in place of the STD-152 to certify Lost, Stolen, Worn Out or Damaged beyond repair property.

Date of Occurrence: Enter the date the property was broken, left on line or damaged.

Quantity: Enter the quantity for the line item.

Unit of Measure: Enter the unit of measure for the line item (example ea = each).

CDF Stock Number: Enter the PIN or stock number.

Description: Enter the description of the line item, indicate size, make, model and type. Clearly describe the item and provide adequate data to effectively identify equipment or property.

Property Number: Enter the CDF property number assigned to the line item, Capitalized or sensitive property must have their property number entered here.

Location of Items: Where is the property now (example, left on Division B night shift 8/1/04, Drop Point 2). A GPS coordinate, Station 22 or Unit Service Center may also be used to describe Location.

Remarks: Enter specific remarks here, how was the property damaged, what specifically is wrong with it.

Signature of Person Certifying Occurrence as Described:

Signature: The CDF Employee certifying the occurrence must sign.

Printed Name: Enter the printed name of the signature.

Title: Enter the title of the signature.

Date: Enter the date of the signature.

Unit Supervisors Approval:

If submitted on an incident this section must be completed by the supervisor of the property custodian. This may be the Strike Team Leader, Division Supervisor, Receiving and Distribution Manager, Supply Unit Leader, Logistics Section Chief, Agency Representative or Incident Commander.

If submitted at the home Unit this section must also be completed by the supervisor of the property custodian. This may be a Battalion or Division Chief.

Comments: Supervisors may enter comments of approval or disapproval.

Signature of Unit Administrator: Signature of Unit Supervisor reviewing the certification described.

Title: Title of the signature.

Date: Date of the signature.

Notes:

This document is NOT required if exchanging property at an incident base with the exception of capitalized or sensitive property assigned a CDF property number.

This document is required as certification when submitting an MRT to your local Service Center for replacement of property.

An OF-315 (Incident Replacement Requisition) is required as authorization to purchase fire replacement items at your local Unit. This document is required when submitting an MRT to your local Service Center for fire replacement items. A CDF-101 and/or A STD-152 are required for the certification of the status of property being requisitioned for replacement.



CAL FIRE WATER USAGE PLAN

California Drought Emergency

The following shall be considered and implemented by all fire resources as a means to provide maximum efficiencies when utilizing water resources, while minimizing the impacts to private and public water supplies. Accountability shall be maintained for all water supplies that are utilized and care should be applied to ensure proper replacement and/or reimbursement to the supplier/owner.

Fireline personnel- (During mop up operations)

- Use Pencil Hose and Garden Nozzles with Shut-Offs.
- Use Back pumps.
- Use Dry Mop-up and consolidation of heavy fuels to areas where they can burn out safely.
- Locate/Relocate Firelines to lighter fuels or natural barriers when safe.
- Set up and use portable tanks in anticipation of longer transport times for Water Tenders.
- Use of foams, gels and other water enhancers.
- Evaluate need to mop up in excess of 200 feet from fireline.

Road Maintenance and Repair-

- Monitor and water roads only when and where needed.
- Water when most effective (evening and nights).
- Use chemical treatments when available (Magchloride, Omni bind etc.).
- Consider use of tertiary or treated water.

Aviation Operations-

- Consider use of Gels, Foams and Retardants. Set up portable plants.
- Consider using Blivits and Pencil Hose for interior mop up operations as opposed to numerous bucket drops.
- Establish and use pre-use agreements for existing and known water sources.
- Use large watershed dip sites when able. Minimize use of small, static ponds and lakes.
- Maintain accountability of water used and locations of dip sites.
- Evaluate need for interior bucket drops.

Private Water Supplies-

- Notify property owner as early as possible.
- Minimize usage and develop alternative water supplies when and where appropriate.
- Track usage (meter, ICS-214, Water Usage Reports) and develop a plan to replace water.

Public/Municipal Water Supplies-

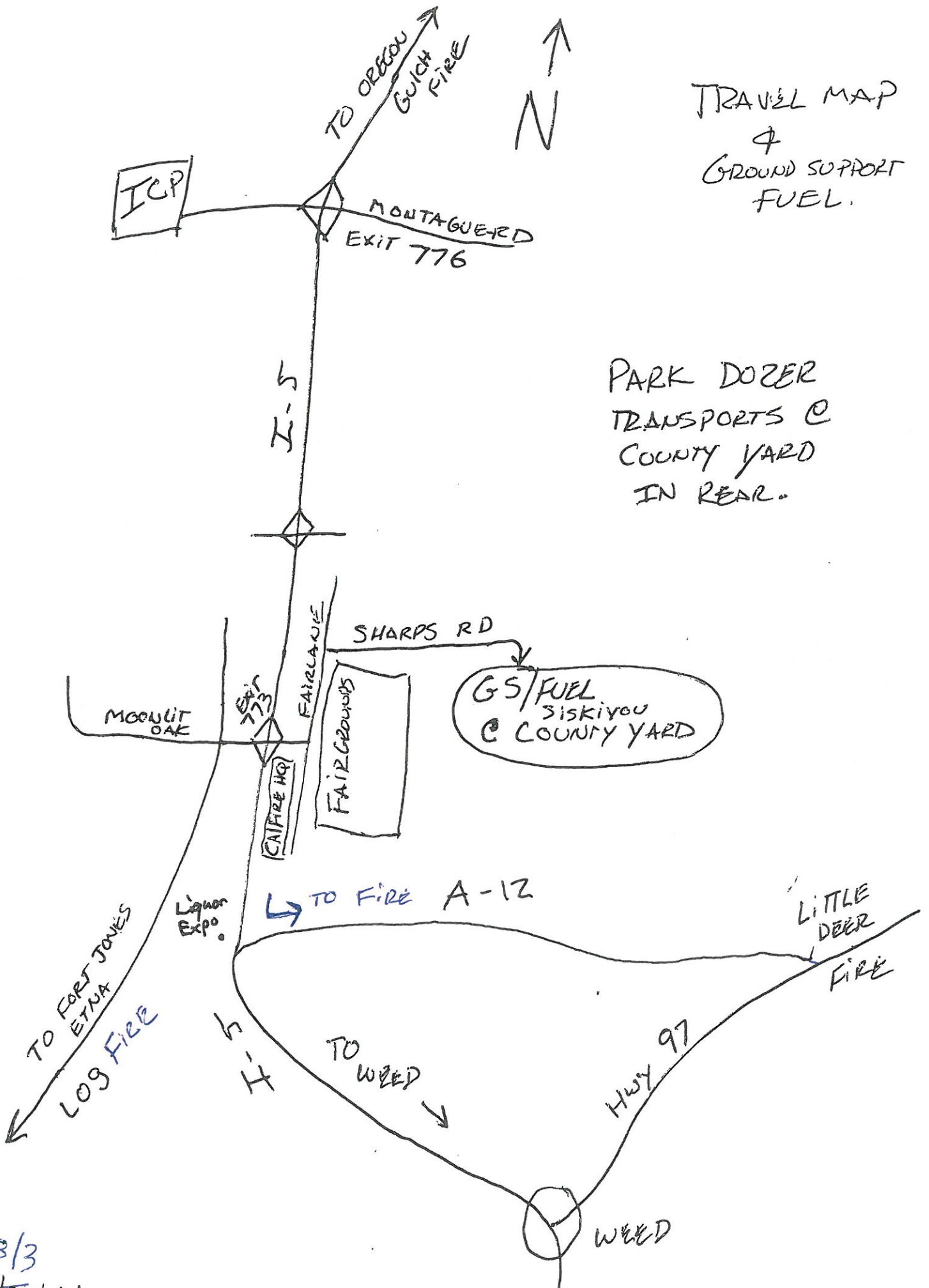
- Notify Agency as soon as possible and request a representative to the incident.
- Identify fill areas and request metering devices. Note locations on incident map.
- Use alternative or reclaimed water sources when available. Note locations on incident map.

Management and Supervision-

- Consider complexity of water use on incidents. Establish a Water Supply Group Supervisor to coordinate additional resources to support the incident needs.
- Complete the Water Usage Report daily and turn in to Finance.
- Review this check list and brief daily.

TRAVEL MAP
&
GROUND SUPPORT
FUEL.

PARK DOZER
TRANSPORTS @
COUNTY YARD
IN REAR.



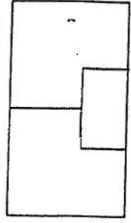
8/3
DL

SUPPLY

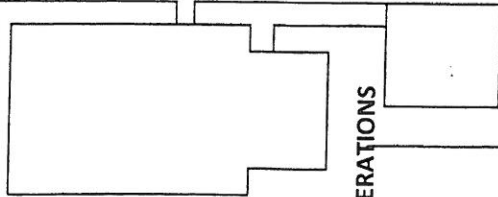
Yreka Union High School Campus

Superintendent: Mark Greenfield
Principal: Marie Caldwell

Agriculture



RESOURCES



CLERICAL TRAILER

FINANCE

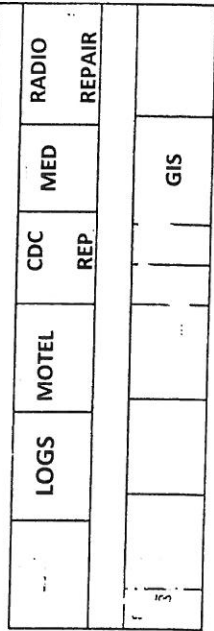
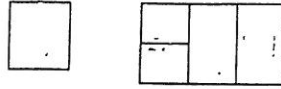
EATING AREA

MKU

COMMUNICATIONS

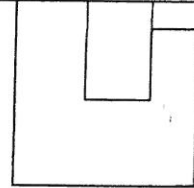
CCC SLEEPING

CDC SLEEPING

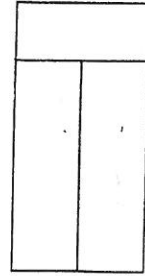


BRIEFING

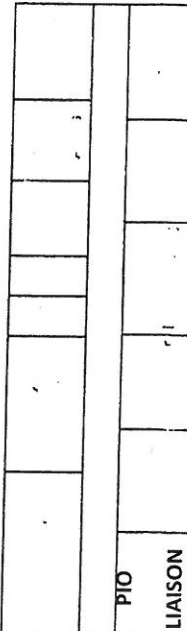
OPERATIONS



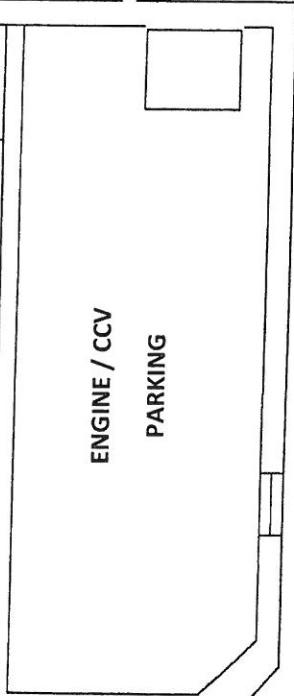
OVERHEAD PARKING



PIO LIAISON

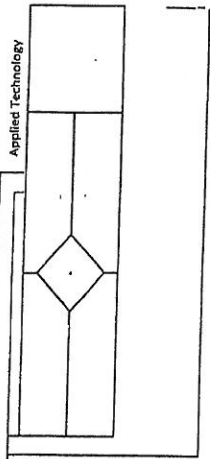


ENGINE / CCV PARKING



OVERHEAD PARKING

Big Gym: Mr. Pendley, Mrs. Borg



Applied Technology

