



Boles Incident

CA-SKU-007064

OPERATIONAL PERIOD

Saturday September 20th 0700 to
Sunday September 21th 0700



INCIDENT OBJECTIVES	1. INCIDENT NAME Boles	2. DATE 9/19/14	3. TIME 2000
----------------------------	----------------------------------	---------------------------	------------------------

4. OPERATIONAL PERIOD (DATE/TIME)
9/20/14 – 9/21/14 0700-0700

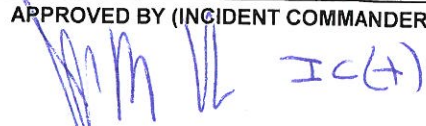
- 5. MANAGEMENT OBJECTIVES**
- Provide for and maintain public and firefighter safety by utilizing the incident safety analysis process
 - Encourage and conduct unified damage inspection with all affected agencies
 - Be financially responsible for all management and fire suppression tactics
 - Foster and enhance community and political relationships
 - Evaluate economic impacts to the community
- 6. GENERAL CONTROL OBJECTIVES**
- Keep the fire within the current control lines
 - Facilitate the residents return and entry to their properties

7. WEATHER FORECAST FOR OPERATIONAL PERIOD
Pacific High Pressure builds in with a significant warming and drying trend this weekend. Winds will start out light from the north east this morning, but as the heat builds across the Shasta Valley, there will be a return to south east to south west winds during the afternoon hours.

8. GENERAL SAFETY MESSAGE
General safety awareness: Hazardous Materials, Unstable structures, Fire weakened trees
Citizens back in the area
Accidents can happen during Demob

- 9. Attachments (☑ if attached)**
- | | | | |
|---|---|--|--|
| <input checked="" type="checkbox"/> Organization List (ICS 203) | <input checked="" type="checkbox"/> Medical Plan (ICS 206) | <input type="checkbox"/> Finance | <input type="checkbox"/> Shift Ticket Example |
| <input checked="" type="checkbox"/> Weather Forecast | <input type="checkbox"/> Air Operations (ICS 220) | <input checked="" type="checkbox"/> Training Message | <input checked="" type="checkbox"/> Water Usage Plan |
| <input checked="" type="checkbox"/> Fire Behavior Forecast | <input checked="" type="checkbox"/> Assignment List (ICS 204) | <input checked="" type="checkbox"/> Demob Message | <input checked="" type="checkbox"/> Unit Log 214 |
| <input checked="" type="checkbox"/> Safety Message | <input checked="" type="checkbox"/> Travel Map | <input checked="" type="checkbox"/> Phone List | <input type="checkbox"/> _____ |
| <input checked="" type="checkbox"/> Communications Plan (ICS 205) | <input checked="" type="checkbox"/> Archaeologist message | <input checked="" type="checkbox"/> Suppression
Repair Plan | <input type="checkbox"/> _____ |

10. PREPARED BY (PLANNING SECTION CHIEF)
Jason Martin (T)

11. APPROVED BY (INCIDENT COMMANDER)
 ICA

ORGANIZATION ASSIGNMENT LIST

1. Incident Name

Boles

2. Date

9/19/14

3. Time

2000

4. Operational Period

9/20/14- 9/21/14 0700-0700

Position

Name

5. Incident Commander and Staff

Incident Commander

T. Derum / J. Veik (T)

Deputy

Kelly Zombro

Safety Officer

B. Stangeland / J. Piccinini (T)

Information Officer

Steve Kaufmann

Liaison Officer

M. Bradley / F. Flores

6. Agency Representative

SCSO

Carl Houtman

Weed PD

Steve Shannon

CHP

Dave Peterson

Red Cross

Eric Kilt

7. Planning Section

Chief

S. Beach / J. Martin (T)

Resources Unit

T. Person / D. Arbgast / J. Pangburn (T) /
A. Klem (T)

Situation Unit

A. J. Johansson / J. Taylor (T)

Documentation Unit

Demobilization Unit

T. J. McGovern / C. Durrance (T)

Damage Inspection

Crew Tech

Fire Suppression Repair

Damon Denman

Training

R. Karlen / C. Barden (T)

GIS

Daniel Dresselhaus

FBAN

T. Chavez / J. Heggie (T)

Archaeologist

8. Logistics Section

Chief

J. Crawford / R. Reynolds (T)

Deputy

Bob Wood

Supply Unit

Mathew Brandt

Facilities Unit

B. Ellis / G. Randar (T)

Ground Support Unit

Doug Freeman

Hired Equipment

Len Nielson

Communications Unit

Austin Browne

Motel Coordinator

Cassie Miller

Medical Unit

Darin Nelson

Food Unit

Ed Galipeault

9. Operations

Chief

S. Lindgren (Day Ops) / B. Weiser (Night Ops)

Deputy

M. Brown / G. Gonzalez (T)

A. Branch I - Division/Groups

Branch Director

S. Lauderdale / L. Haack (T)

Deputy

Division/Group

A / B / X

Aaron Latta

Division/Group

B. Branch II - Division/Groups

Branch Director

S. Dakin / G. Money (T)

Deputy

Division/Group

M / N

D. Munch / J. Jones (T)

Division/Group

C. Branch - Division/Groups

Branch Director

Deputy

Division/Group

Damage Inspection

Mike Wilson

Division/Group

Suppression Repair Grp

Damon Denman

Division/Group

D. Branch

Branch Director

Deputy

Division/Group

Division/Group

E. Branch

Branch Director

Deputy

Division/Group

Division/Group

F. Branch

Branch Director

Deputy

Division/Group

Division/Group

G. Air Operations BranchAir Ops Branch
Director

Mark Gradek

Air Support
Group

Greg Bradshaw

Heli-Base
Manager**10. Finance Section**

Chief

P. Peisch

Deputy

Mark Glass

Time Unit

Leslie Drexel

Procurement Unit

Dave Irion

Compensation/Claims Unit

Karen Kanawyer

Cost Unit

George Huang

Prepared by (Resource Unit Leader)

Tim Person

DIVISION ASSIGNMENT LIST			1. Branch I		2. Division/Group A / B / X			
3. Incident Name Boles			4. Operational Period Date: 9/20-9/21 Time: 0700-0700					
5. Operations Personnel								
Operations Chief		S. Lindgren (Day Ops) / B. Weiser (Night Ops)		Division/Group Supervisor		Aaron Latta****		
Branch Director		S. Lauderdale**** / L. Haack (T)****		Branch Safety		K. Margiott**** / M. McKey****		
6. Resources Assigned this Period								
Strike Team/Task Force/ Resource Designator	Leader		Number Persons	Drop Off PT./Time	Pick Up PT./Time	On Line	Off Line	
STA OES 4810A****	Craig Wiedenhoeff		21	DP-1 / 0800	1900			
STC TGU 9251C****	Mark Hopkins		17	DP-1 / 0800	1900			
STG SKU 9262G****	Greg Roath		37	DP-1 / 0800	1900			
FEMP *	Jordan Russel		1	DP-1 / 0800	1900			
FEMT****	Dustin Grinstead		1	DP-1 / 0800	1900			
7. Control Operations Tactical patrol and mop-up 100%. Assist public with repopulation and entry into damaged properties as necessary.								
8. Special Instructions * DIVS shall ensure an accountability process for assigned personnel, and ensure that all assigned personnel receive a thorough briefing. ** Maintain a safe collapse zone around unstable structures and free standing chimneys. Be on the lookout for hidden basements. Watch footing on slippery surface when cleaning retardant. **Watch out for fire weakened trees and utility poles. Utilize falling teams to mitigate. ****12 Hour Resource.								
9. Division/Group Communication Summary								
Function	Frequency	System	Channel		Function	Frequency	System	Channel
Command	RX 151.1900 TX 159.2250 Tone 2	King NIFC	1 CDF C10		Line Medical	RX/TX 156.0750	King NIFC	10 CALCORD
Tactical Div/Group	RX/TX 154.2725	King NIFC	3 VFIRE 24		Air to Ground	RX/TX 151.2200	King NIFC	11 CDF A/G
Prepared by (Resource Unit Ldr.) Tim Person			Approved by (Planning Sect. Ch.) Jason Martin (T)			Date 9/19/14		Time 2000

DIVISION ASSIGNMENT LIST			1. Branch II		2. Division/Group M / N			
3. Incident Name Boles			4. Operational Period Date: 9/20-9/21 Time: 0700-0700					
5. Operations Personnel								
Operations Chief		S. Lindgren (Day Ops) / B. Weiser (Night Ops)		Division/Group Supervisor		D. Munch**** / J. Jones (T)****		
Branch Director		S. Dakin**** / G. Money (T)****		Branch Safety		J. Morris**** / M. Streck****		
6. Resources Assigned this Period								
Strike Team/Task Force/ Resource Designator		Leader		Number Persons	Drop Off PT./Time	Pick Up PT./Time	On Line	Off Line
STA OES 3800A****		Wade Harrison		21	DP-2 / 0800	1900		
IA-STC SHU 9245C****		Rob Beensee		18	DP-2 / 0800	1900		
ENG SKU 2660****		Chris Pitts		4	DP-2 / 0800	1900		
ENG SKU 2663****		Aaron Gaedert		5	DP-2 / 0800	1900		
ENG SKU 2665****		Keith Etter		3	DP-2 / 0800	1900		
ENG SKU 2667****		Clint Singleton		4	DP-2 / 0800	1900		
STG SKU 9263****		Keith Cummings		35	DP-2 / 0800	1900		
FEMP*		Matthew Depolo		1	DP-4 / 0800	1900		
FEMT****		Noah Byrne		1	DP-4 / 0800	1900		
7. Control Operations Tactical patrol and mop-up 100%. Assist public with repopulation and entry into damaged properties as necessary. Assist Roseburg.								
8. Special Instructions * DIVS shall ensure an accountability process for assigned personnel, and ensure that all assigned personnel receive a thorough briefing. ** Maintain a safe collapse zone around unstable structures and free standing chimneys. Be on the lookout for hidden basements. Watch footing on slippery surface when cleaning retardant. **Watch out for fire weakened trees and utility poles. Utilize falling teams to mitigate. ****12 Hour Resource. IA - STC SHU 9245C is available for initial attack to the Unit.								
9. Division/Group Communication Summary								
Function	Frequency	System	Channel		Function	Frequency	System	Channel
Command	RX 151.1900 TX 159.2250 Tone 2	King NIFC	1 CDF C10		Line Medical	RX/TX 156.0750	King NIFC	10 CALCORD
Tactical Div/Group	RX/TX 154.2875	King NIFC	4 VFIRE 25		Air to Ground	RX/TX 159.3750	King NIFC	11 CDF T20
Prepared by (Resource Unit Ldr.) Tim Person			Approved by (Planning Sect. Ch.) Jason Martin (T)			Date 9/19/14		Time 2000

DIVISION ASSIGNMENT LIST	1. Branch	2. Division/Group Damage Inspection Group
--------------------------	-----------	---

3. Incident Name Boles	4. Operational Period Date: 9/20-9/21 Time: 0700-0700
----------------------------------	--

5. Operations Personnel			
Operations Chief	S. Lindgren (Day Ops) / B. Weiser (Night Ops)	Division/Group Supervisor	Mike Wilson****
Branch Director		Branch Safety	

6. Resources Assigned this Period						
Strike Team/Task Force/ Resource Designator	Leader	Number Persons	Drop Off PT./Time	Pick Up PT./Time	On Line	Off Line
DINS****	Robert Chew	1	Weed FS / 0800	1900		
DINS****	Matt Lee	1	Weed FS / 0800	1900		
Inspection Team 2****	C. Curtis / A. Mitchell	2	Weed FS / 0800	1900		
Inspection Team 3****	C. Fowler / S. Meyer / K. Vollenweider	3	Weed FS / 0800	1900		

7. Control Operations
Conduct damage inspection to each parcel throughout the fire area. Assist the public as needed.

8. Special Instructions
*** DIVS shall ensure an accountability process for assigned personnel, and ensure that all assigned personnel receive a thorough briefing.**
**** Maintain a safe collapse zone around unstable structures and chimneys. Be on the lookout for hidden basements. Watch footing on slippery surfaces when cleaning retardant.**
****** 12 Hour Resource.**

9. Division/Group Communication Summary							
Function	Frequency	System	Channel	Function	Frequency	System	Channel
Command	RX 151.1900 TX 159.2250 Tone 2	King NIFC	1 CDF C10	Line Medical	RX/TX 156.0750	King NIFC	10 CALCORD
Tactical Div/Group	RX/TX 151.1375	King NIFC	6 VTAC 11	Air to Ground	RX/TX 151.2200	King NIFC	11 CDF A/G

Prepared by (Resource Unit Ldr.) Tim Person	Approved by (Planning Sect. Ch.) Jason Martin (T)	Date 9/19/14	Time 2000
---	---	------------------------	---------------------

5

DIVISION ASSIGNMENT LIST	1. Branch	2. Division/Group Suppression Repair Group
---------------------------------	-----------	--

3. Incident Name Boles	4. Operational Period Date: 9/20-9/21 Time: 0700-0700
----------------------------------	--

5. Operations Personnel			
Operations Chief	S. Lindgren (Day Ops) / B. Weiser (Night Ops)	Division/Group Supervisor	Damon Denman****
Branch Director		Group Safety	

6. Resources Assigned this Period						
Strike Team/Task Force/ Resource Designator	Leader	Number Persons	Drop Off PT./Time	Pick Up PT./Time	On Line	Off Line
STG SLU 9397G	Tim Davis	38	Weed FS / 0800	1900		
DOZ PVT E-8****	Jason Thomas	1	Weed FS / 0800	1900		
DOZ PVT E-9****	Nick Oiler	1	Weed FS / 0800	1900		
FOBS****	James McDaniel	1	Weed FS / 0800	1900		
FOBS****	Mike Rosan	1	Weed FS / 0800	1900		

7. Control Operations
Implement the Fire Suppression Repair Plan. Assist divisions and public as necessary.

8. Special Instructions
*** DIVS shall ensure an accountability process for assigned personnel, and ensure that all assigned personnel receive a thorough briefing.**
**** Maintain a safe collapse zone around unstable structures and free standing chimneys. Be on the lookout for hidden basements. Watch footing on slippery surface when cleaning retardant.**
****Watch out for fire weakened trees and utility poles. Utilize falling teams to mitigate.**
******12 Hour Resource.**

9. Division/Group Communication Summary							
Function	Frequency	System	Channel	Function	Frequency	System	Channel
Command	RX 151.1900 TX 159.2250 Tone 2	King NIFC	1 CDF C10	Line Medical	RX/TX 156.0750	King NIFC	10 CALCORD
Tactical Div/Group	RX/TX 154.3025	King NIFC	5 VFIRE 26	Air to Ground	RX/TX 151.2200	King NIFC	11 CDF A/G

Prepared by (Resource Unit Ldr.) Tim Person	Approved by (Planning Sect. Ch.) Jason Martin (T)	Date 9/19/14	Time 2000
---	---	------------------------	---------------------

6

Boles Incident Weather Forecast

Incident: **Boles Fire**

Operational Period: **Sat Sep 20th 0700-0700**

Issued: 1500 Friday Sep 19th 2014

Discussion: Pacific High Pressure builds in with a significant warming & drying trend this weekend. Winds will start out light from the NE this morning, but as the heat builds across the Shasta Valley, there will be a return to SE to SW winds during the afternoon hours both today and Sunday, although not nearly as strong as earlier this week. Another issue will be some instability and upper level moisture rotating around from the SE on Sunday. Scattered showers and thunderstorms over the Sierra might brush the Mt Shasta/Mt Eddy area Sunday afternoon. If lightning does occur, moisture would be minimal. A cooling trend begins early next week as a Pacific low pressure system slowly approaches. Southerly winds ahead of the low will be increasing early next week.

*** **NOTE** - All forecast winds are for the *20-ft level* ***

Today (Saturday): Sunny and hot. Max temps 89-94 deg. Min RH 13-18%. Winds NE 2-5 mph early, becoming SE-SW 8-13 mph gusts 18 mph by afternoon.

Tonight: Clear . Min temps 50-55 deg. Max RH 50-60%. Winds light drainage 1-4 mph.

Sunday: Partly Sunny, with afternoon cumulus buildups, and just a slight chance of a T-storm. Max temps 88-93 deg. Min RH 14-19%. Winds S-SW 10-15 mph gusts 20 mph.

Outlook for Monday: Sunny. Max temp 83-87 deg, Min RH 15-20%. Wind S 12-17 mph gust 20 mph

Incident Meteorologist – Predictive Services

Basil Newmerzhycky

Basil Newmerzhycky



FIRE BEHAVIOR FORECAST

FORECAST NUMBER 4	TYPE OF FIRE SURFACE
FIRE NAME Boles	OPERATIONAL PERIOD 9-20-14 24 HOUR SHIFT
DATE ISSUED 9-19-14	TIME ISSUED 1900 HOURS
UNIT Siskiyou	SIGNED Jon Heggie <i>Jon Heggie</i>

INPUTS

WEATHER SUMMARY

A return of warmer, dryer weather will return to the region for this operational period. Normal winds for the area will also return to from the south. The predicted wind will not be as strong as the winds observed in the first few days of the incident but will still gust above 17mph.

SEE ATTACH FIRE WEATHER FORECAST

OUTPUTS

FIRE BEHAVIOR

GENERAL

Most of the heat has been mitigated from the incident but the region still remains in fuels advisory so any flare-ups or new starts in the area will require quick and aggressive suppression actions to keep the fire at 10 acres or less. The live fuel moistures are at historic lows for Manzanita at 72% and approaching historic lows for 1000-hour fuels at 13%. The Energy Release Component for the Weed Airport has been at historic highs for the last week and remains at the 90th percentile. The fire area is a mix of brush, timber and grass. There is a high likely hood of any established new start of escape to make the transition to a crown fire with ample ladder fuel and heavy down and dead loading.

SPECIFIC

BRANCH I/II

Fire activity should be minimal but opportunity for an escape still remains. Probability of ignition in the light flashy fuels will be above 70%. If the fire becomes established crews can expect flame lengths to exceed 16ft and rates of spread over 48ch/h. Southern exposed hillsides will have the best environment for any fire growth. A return to hot and dry weather may revile sleeper spots that were not previously detected don't assume that no perimeter grown equals no fire behavior.

AIR OPERATIONS:

- Air resources may be new to the incident so ensure that your communications reference geographic locations not divisions or branches

SAFETY

- Hazard trees will kill you, know where you are working at all times and look up!
- Don't let a lack of fire activity create a complacent attitude, the fuel are still ready to burn
- Spot fires will grow rapidly, attack all fires with safety as your first priority



SAFETY MESSAGE

BOLES



CA-SKU 7064 SEPTEMBER 20, 2014 0700-0700

GENERAL SAFETY AWARENESS

MANY HAZARDS AND RISK REMAIN

S
A
F
E
T
Y

Watch out for

- Hazardous Materials, LPG, Kerosene.
- Unstable structural members and free standing chimneys.
- Snags, fire weakened trees.

Mitigation – Look up to live- Look up, Look Down, Look all around.

- Wear proper PPE including N95 masks and SCBA as required.
- Look for leaking containers and other haz mat situations that may need to be addressed.
- Be aware of your surroundings – look for hazards and consider risk!

I
T
'
S
U
P

CITIZENS BACK IN THE AREA

CIVILIAN POPULATION IN THE FIRE AREA

S
A
F
E
T
Y

Maintain a high level of situational awareness particularly

- Watch for vehicles and civilian foot traffic.
- Watch for distracted civilians driving through the area.
- Watch for the unexpected while performing your work assignments

Mitigation – Drive with a high level of Situational Awareness

- Practice defensive driving techniques.
- Provide good customer service without compromising safety.
- Use warning lights as appropriate when on roadways.

T
O

DEMOB

ACCIDENTS CAN HAPPEN DURING DEMOB

Be on the lookout for vehicle and pedestrian congestion

- Vehicles will be moving in tight areas around Ground Support and parking areas.
- Increased backing and maneuvering of vehicles in tight spots.
- Crews may be in a hurry to leave the incident due to reassignment.

Mitigation- Maintain high levels of situational awareness through the demob process.

- Provide back-up and spotter personnel - more than one may be required
- Drive safely and be on the lookout for ICP pedestrian traffic
- Drive safely and monitor fatigue when traveling to home unit or new incident.

Y
O
U
!
!
!

S
A
F
E
T
Y

JACK PICCININI

J. Piccinini
Safety Officer
Cal Fire IMT 4

INCIDENT RADIO COMMUNICATIONS PLAN **BOLES INCIDENT** **9/19 16:30:00 PM** **9/20/-9/21 0700-0700**

Zn / Ch	Function	Channel Name/Trunked Talkgroup	Assignment	RX Freq	RX Tone/NAC	TX Freq	TX Tone/NAC	Mode A, D, M	Remarks
1	COMMAND	CDF C10	ALL DIVISIONS	151.1900	103.5	159.2250	123.0	A	TONE 2
2									
3	TACTICAL	VFIRE 24	DIV A/B/X	154.2725	156.7	154.2725	156.7	A	BRANCH I
4	TACTICAL	VFIRE 25	DIV M/N	154.2875	156.7	154.2875	156.7	A	BRANCH II
5	TACTICAL	VFIRE 26	SUPP REPAIR	154.3025	156.7	154.3025	156.7	A	SUPPRESSION REPAIR
6	TACTICAL	VTAC 11	DAMAGE INSP	151.1375	156.7	151.1375	156.7	A	DAMAGE INSPECTION BRANCH
7									
8									
9	TACTICAL	VTAC 14	STAGING/BRIEFING	159.4725	156.7	159.4725	156.7	A	Briefing broadcast daily 0700
10	TACTICAL	CALCORD	MEDICAL- LINE	156.0750	156.7	156.0750	156.7	A	LINE MEDICAL
11	AIR to GROUND	CDF A/G	ALL DIVISIONS	151.2200	0.0	151.2200	0.0	A	
12	COMMAND	SKU L T-2	LOCAL IA	151.3250	156.7	159.3600	123.0	A	TONE 2
13	COMMAND	SKU L T-7	LOCAL IA	151.3250	156.7	159.3600	167.9	A	TONE 7
14	TACTICAL	CDF T11	LOCAL IA	151.4450	192.8	151.4450	192.8	A	
15									
16	AIR GUARD	GUARD	EMERGENCY ONLY	168.6250	0.0	168.6250	110.9	A	
17									
18									
19									
20	AIR GUARD	GUARD	EMERGENCY ONLY	168.6250	0.0	168.6250	110.9	A	

Prepared By (Communications Unit Leader) **Austin L. Browne** Incident Location **Yreka Fairgrounds** Latitude, Longitude

County **Siskiyou** Siskiyou

Deviation is assumed to be narrow band unless otherwise noted in the remarks. Mode refers to either "A" (analog), "D" (digital) or "M" (mixed mode). 1/14/14 v.5

MEDICAL PLAN ICS 206	1. INCIDENT NAME BOLES	2. DATE PREPARED 9/19/14	3. TIME PREPARED 1600 hrs	4. OPERATIONAL PERIOD 9/20/14 0700-1900 hrs
---------------------------------------	----------------------------------	-----------------------------	------------------------------	---

5. INCIDENT MEDICAL AID STATIONS	
MERT	Behind feeding area Nurse & P.A. YES

6. TRANSPORTATION

A. AMBULANCE SERVICES				
NAME	LOCATION	PHONE	PARAMEDICS	
			YES	NO
Mt. Shasta Ambulance	1020 Oak Street; Mt. Shasta, CA.	530-926-3420	X	
Reach 5 Air Ambulance	Redding, CA.	877-939-6300	RN	
PHI Air Ambulance	Redding, CA.	800-597-9571	RN	

B. INCIDENT AMBULANCES			
Name	LOCATION	PARAMEDICS	
		YES	NO

7. HOSPITALS

NAME	ADDRESS	TRAVEL TIME- minutes		PHONE	HELIPAD		BURN CENTER	
		AIR	GRND		YES	NO	YES	NO
Mercy Medical Level III trauma	914 Pine St., Mt. Shasta, CA.	5	12	530-926-6111	X			X
Mercy Redding Level II trauma	2175 Rosaline Ave; Redding, CA.	39	70	530-225-6000	X			X
Fairchild Medical	444 Bruce St., Yreka, CA.	10	25	530-841-6259	X			X
U.C. Davis Level I Trauma	2315 Stockton Blvd. Sacramento, CA	90	4 HR	916-734-3636	X		X	

8. MEDICAL EMERGENCY PROCEDURES

EMERGENCY FREQUENCY: CALCORD

LINE EMERGENCY:
Crew Supervisor will contact Division Supervisor with patient complaint/condition and location.

- Division/Group Supervisor contacts:
 - Closest EMS resource
 - Communications Unit
- Communications Unit contacts:
 - Ground or Air ambulance as requested
 - Operations
 - Safety
 - Medical Unit (916) 622-3371
- Division Supervisor or designee will serve as point of contact and run medical emergency on assigned channel.
 - A pre-assigned tactical frequency (i.e. CALCORD) should be used for IWI and only for duration of need.
- Communications Unit will clear command channel for emergency traffic as needed and only for duration of need.

CAMP EMERGENCY:
Contact Boles Communications on CALCORD with patient complaint/symptoms and location. Boles Communications will respond appropriate medical response.

- Boles Communication contacts:
 - Medical Unit
 - Safety
 - Logistics
 - Operations
 - Crew Supervisor
 - Comps/Claims

INCIDENT REPORTING PROCEDURES

CHIEF COMPLAINT _____
 LOCATION OF PATIENT _____
 POINT OF CONTACT _____
 TRANSPORTATION REQUESTED BY: AIR ___ GROUND ___
 POINT OF PICKUP _____
 LAT _____ LONG _____
 PATIENT UNIT ID _____
 IS AN EMT WITH PATIENT: YES ___ NO ___
 AGE _____
 SEX: MALE ___ FEMALE ___

ALL EMERGENCIES---Secure the area and identify witnesses for later investigation. Keep an accurate log of events.

Hospital	LAT	LONG
Mercy Medical	N41 19.12	W122 19.27
Mercy Redding	N40 34.31	W122 23.72
Fairchild Medical	N41 43.17	W122 38.75
U.C. Davis	N38 33.20	W121 27.10

ICS 206	9. PREPARED BY: (Medical Unit Leader) Darin Nelson	10. REVIEWED BY: (Safety Officer) Jack Piccinini
---------	--	--



DEMOB

BOLES INCIDENT
CA – SKU – 007064

- In order to be deemed excess, supervisors must submit an ICS #213 to the Resources Unit.
- Resources report to Demob at the times posted on the tentative Demob list, which is posted around the Incident Base.
- Prior to reporting to Demob, Please return all supplies and equipment.
- Resources will get signatures from the following units:
 - Motels
 - Supply
 - Ground Support
 - Training (If they have a trainee)
 - Communications
 - Documentation
 - Time
 - Demob

Archaeological and Historical Sites Fireline Guidance for the Boles Incident

Do not compromise safety for the protection and preservation of archaeological and historical sites. When feasible and prudent:

1. Be on the lookout for prehistoric and historic sites. Prehistoric archaeological sites include temporary camps containing scatters of obsidian and/or chert flakes that often look like broken glass. More permanent village sites containing circular depressions (house pits), artifact scatters, and dark brown-black soils (midden). These typically occur on flats near sources of water, along ridgetops and saddles, and other such places suitable for camping. Historic sites include old wooden buildings, structures and corrals, rock foundations, wells, and debris scatters. These kinds of resources can be found in the same kinds of environmental settings as prehistoric camp sites.
2. No archaeological or historical sites have yet been flagged. If you observe artifacts, features, or sites, attempt to avoid dozing or driving through and/or parking on these sites, if feasible, especially with heavy equipment.
3. If you can't avoid sites, minimize disturbance as much as feasible, only clearing the surface to as minimal a depth and width as necessary.
4. Leave all artifacts in place. Some artifacts may have been intentionally placed for religious or ceremonial reasons.
5. When a site is discovered, flag it for visibility and report its location to the Division Supervisor. If feasible, note locations of discovered resources on a map. Better yet, take a GPS reading. Leave information with the Plans Section so that the sites can be relocated and protected during both the suppression and fire suppression repair phases of the Incident.
6. If you encounter a burial or other human remains, cease work in that area immediately and contact the CAL FIRE Archaeologist. State law requires that CAL FIRE then contact the County Coroner, who will then determine if the remains are part of a crime scene. If the Coroner determines that the remains are Native American, State law requires the Coroner to contact the Native American Heritage Commission in Sacramento.

"Boles"
CA SKU-007064 Incident Fire Suppression Repair Plan

I. Objectives

The objective of the Suppression Repair Plan is to mitigate possible adverse effects to resources resulting from fire suppression activities on the Boles Fire in a manner which does not compromise firefighter safety. The mitigations described within this plan have been developed to apply to constructed fire lines, watercourse crossings, access roads, drop points, heli-spots and any other locations disturbed by fire suppression activities. A Repair Specialist will be assigned to ensure that work is done as required and according to the Emergency Fire Suppression Repair Plan. Additional specialists or equipment may be used if the need arises. Specialists will release equipment from the area when their work is completed.

II. General Repair Guidelines

A. Helispots/Staging Areas/Safety Zones

- 1) Remove soil, and/or breach berms so that runoff can be dissipated. Cross drain these areas to effectively dissipate water runoff.
- 2) Place disturbed vegetation, brush and trees, piled during line construction, on the surface of safety zones and open areas. This may be done with equipment or hand crews.

B. Roads

- 1) Breach berms to facilitate drainage, where applicable.
- 2) Clean culverts plugged with soil and rock resulting from fire suppression activities.
- 3) Blading or grading of roads may be necessary.

C. Firelines; Hand and Dozer

Install waterbars as needed. Hand line waterbar spacing should be at approximate 25 foot intervals. Waterbars are designed to intercept, slow and spread the precipitation run-off in order to reduce sediment transport and soil erosion. The idea is to move water off the fireline before it can build up enough energy to erode and transport sediment. Re-establish waterbars and rolling dips using pre-fire locations. Flatten berms and fill in trenches along fire lines to match natural contours. Utilize cut vegetation for erosion control on steep dozer and hand lines.

Dozerline Waterbar or cross drain spacing

Fireline (%)	0-10%	11-25%	26-50%	>50%
Spacing	150'	100'	75'	50'

D. Watercourses

- 1) Watercourse crossings shall be dipped to original configuration. Waterbreaks shall be installed on each side of channel to divert flow off of trails prior to entering watercourse channel.
- 2) Remove all soil and debris that was placed in any stream channel. A Repair Specialist will review the site for acceptability. If all foreign material cannot be removed with heavy equipment, the material shall be removed by hand. The approaches to the crossing may be sloped back to prevent future stream bank failure.

E. Other Repair Concerns

- 1) Remove all trash from fire lines and other affected areas.
- 2) Repair, broken, damaged fences, and/or gates damaged as the result of the fire control operations will be repaired. (Note: Extent and condition of damage should be documented prior to repairs.)

TRAINING SPECIALIST MESSAGE

Saturday September 19, at 1200 is the deadline for opening an active training assignment with the Training Specialist on this incident.

Trainees who have not previously checked in with the TNSP should do so immediately.

Beat the Rush!!

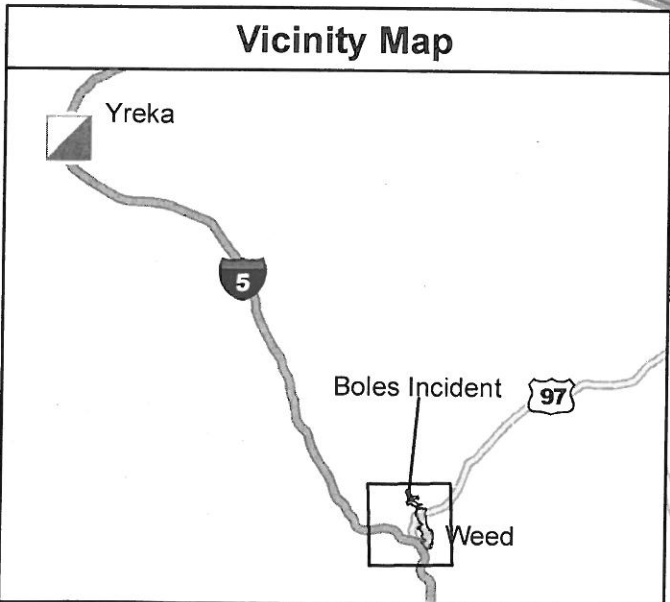
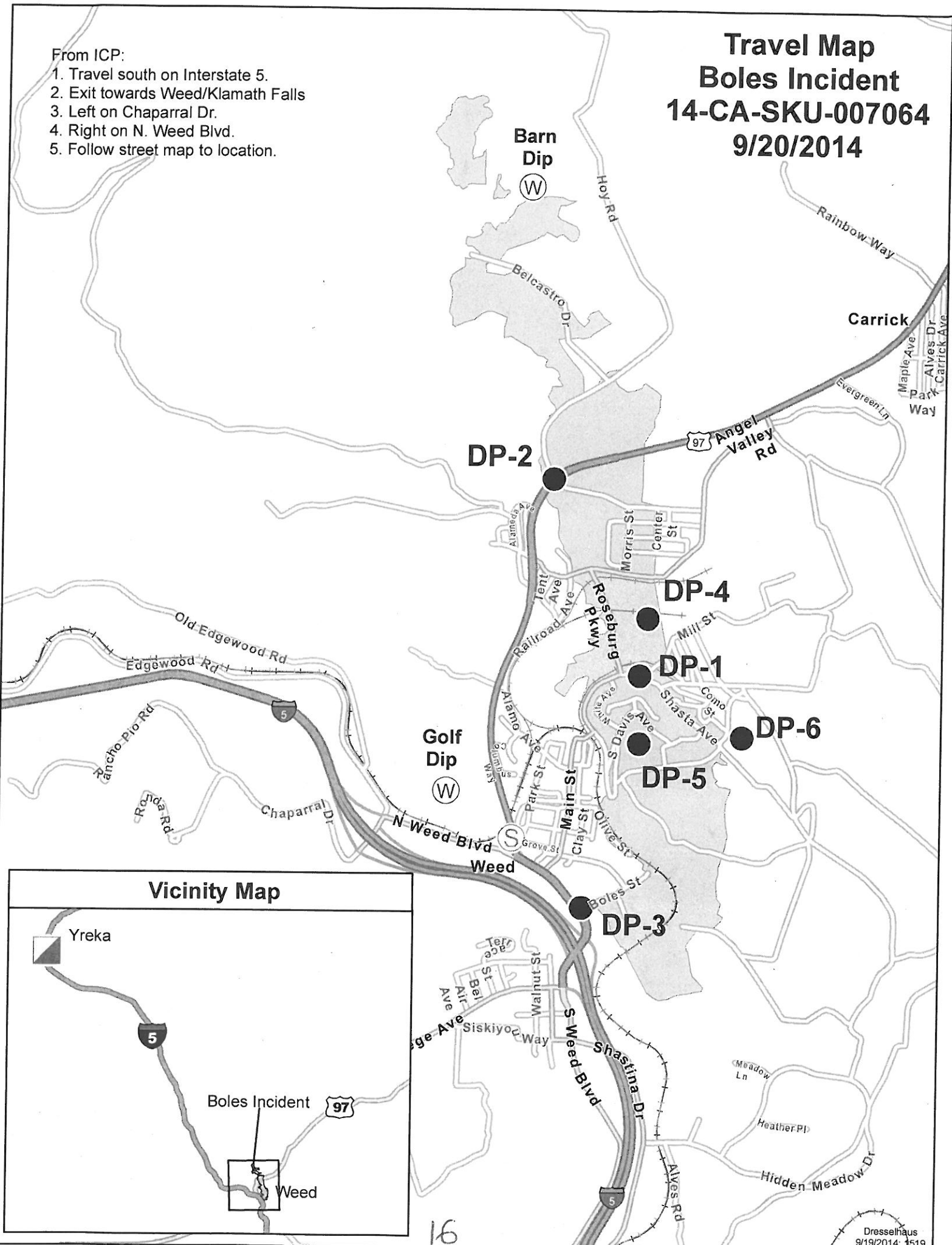
Trainer / Evaluators/Trainees:, you are strongly encouraged to take advantage of your time in camp and conduct the training close-out with the TNSP. It is not necessary to wait until demob!

**Chris Barden 951-818-8578
Training Specialist**

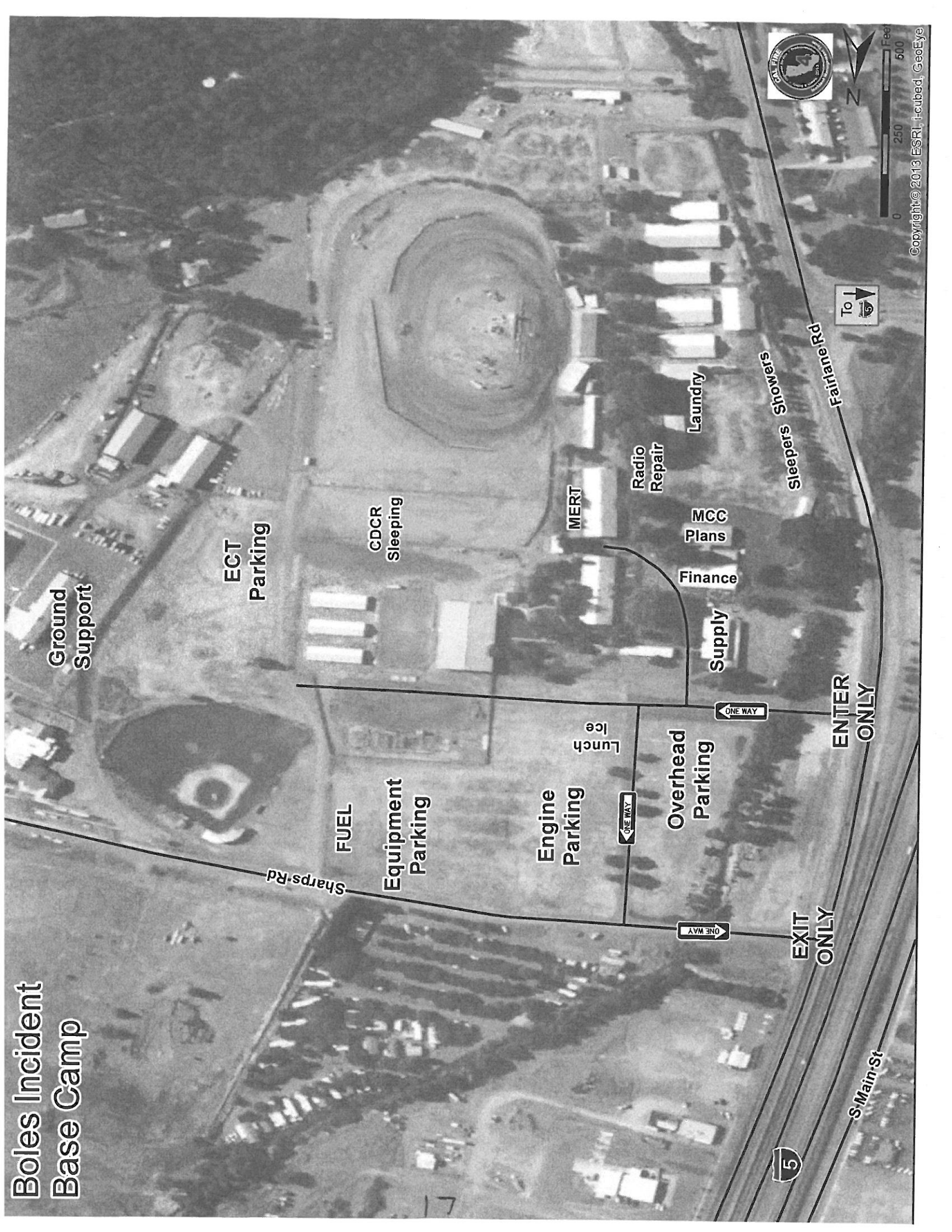
Travel Map Boles Incident 14-CA-SKU-007064 9/20/2014

From ICP:

1. Travel south on Interstate 5.
2. Exit towards Weed/Klamath Falls
3. Left on Chaparral Dr.
4. Right on N. Weed Blvd.
5. Follow street map to location.



Boles Incident Base Camp



Ground Support

ECT Parking

CDCR Sleeping

MERT

Radio Repair

Laundry

MCC Plans

Finance

Supply

Sleepers Snowers

Fairhill Rd

ENTER ONLY

EXIT ONLY

S Main St



0 250 500 Feet

Copyright © 2013 ESRI, Inc. GeoEye

CAL FIRE INCIDENT MANAGEMENT TEAM WATER USAGE PLAN

California Drought Emergency

The following shall be considered and implemented by all fire resources as a means to provide maximum efficiencies when utilizing water resources, while minimizing the impacts to private and public water supplies. Accountability shall be maintained for all water supplies that are utilized and care should be applied to ensure proper replacement and/or reimbursement to the supplier/ owner.

Fireline personnel- (During mop up operations)

- Use of Pencil Hose and Garden Nozzles with Shut-Offs.
- Use of Back pumps.
- Dry Mop-up and consolidation of heavy fuels to areas where they can burn out safely
- Locate/ Relocate Firelines to lighter fuels or natural barriers when safe.
- Set up and use portable tanks in anticipation of longer transport times for Water Tenders.
- Use of foams, gels and other water enhancers.
- Evaluate need to mop up in excess of 200 feet from fireline

Road Maintenance and Repair-

- Monitor and water roads only when and where needed.
- Water when most effective (evening and nights).
- Use chemical treatments when available (Magchloride, Omni bind ect).
- Consider use of tertiary or treated water (sp)

Aviation Operations-

- Use of Gels, Foams and Retardants. Set up portable plants.
- Consider Blivits and Pencil hose for interior mop up operations as opposed to numerous bucket drops.
- Establish and use pre-use agreements for existing and known water sources.
- Use large watershed dip sites when able. Minimize use of small, static ponds and lakes.
- Maintain accountability of water used and locations of dip sites.
- Evaluate need for interior bucket drops

Private Water Supplies-

- Notify property owner as early as possible.
- Minimize usage and develop alternative water supplies when and where appropriate.
- Track usage (meter, 214 form) and develop a plan to replace water.
- Make arrangements for reimbursement and damage claims if needed.

Public/ Municipal Water Supplies-

- Notify Agency as soon as possible and request a representative to the incident.
- Identify fill areas and request metering devices. Place on incident map.
- Use alternative or reclaimed water sources when available. Place on incident map.
- Make arrangements for reimbursement and damage claims if needed.

Management and Supervision-

- Use leaders intent and establish Water Conservation as an Management Objective.
- Consider complexity of water use on incidents. Establish a Water Supply Group Supervisor to coordinate additional resources to support the incident needs.
- Complete the Water Usage Report daily and turn in to Finance
- Review this check list and brief daily.

CAL FIRE INCIDENT MANAGEMENT TEAM WATER USAGE LOG

DATE: _____

Division / Group: _____

AGENCY ID / VENDOR: _____

I.e., Strike Team 1110C, Acme Water Tenders

REQUEST # _____

TURN INTO FINANCE DAILY

WATER SOURCE LOCATION	Hydrant	Open source i.e. pond	Tank	Gallons Used	Property Owner / Contact Number if known **

****Please note if you made contact with property owner and their contact.
(Use reverse side if needed.)**

Information: _____

The intent of this document is intended to track, record and validated the amount of water used on a incident. It's not intended to review the performance of equipment using the water on an incident.

20

This page intentionally left blank.

ACTIVITY LOG (ICS 214)

1. Incident Name: Boles	2. Operational Period: Date From: 9/20/14 Time From: 0700	Date To: 9/21/14 Time To: 0700
--------------------------------	---	-----------------------------------

3. Name:	4. ICS Position:	5. Home Agency (and Unit):
-----------------	-------------------------	-----------------------------------

6. Resources Assigned:		
Name	ICS Position	Home Agency (and Unit)

7. Activity Log:	
Date/Time	Notable Activities

8. Prepared by: Name: _____ Position/Title: _____ Signature: _____
ICS 214, Page 1 of _____ Date/Time: _____

22