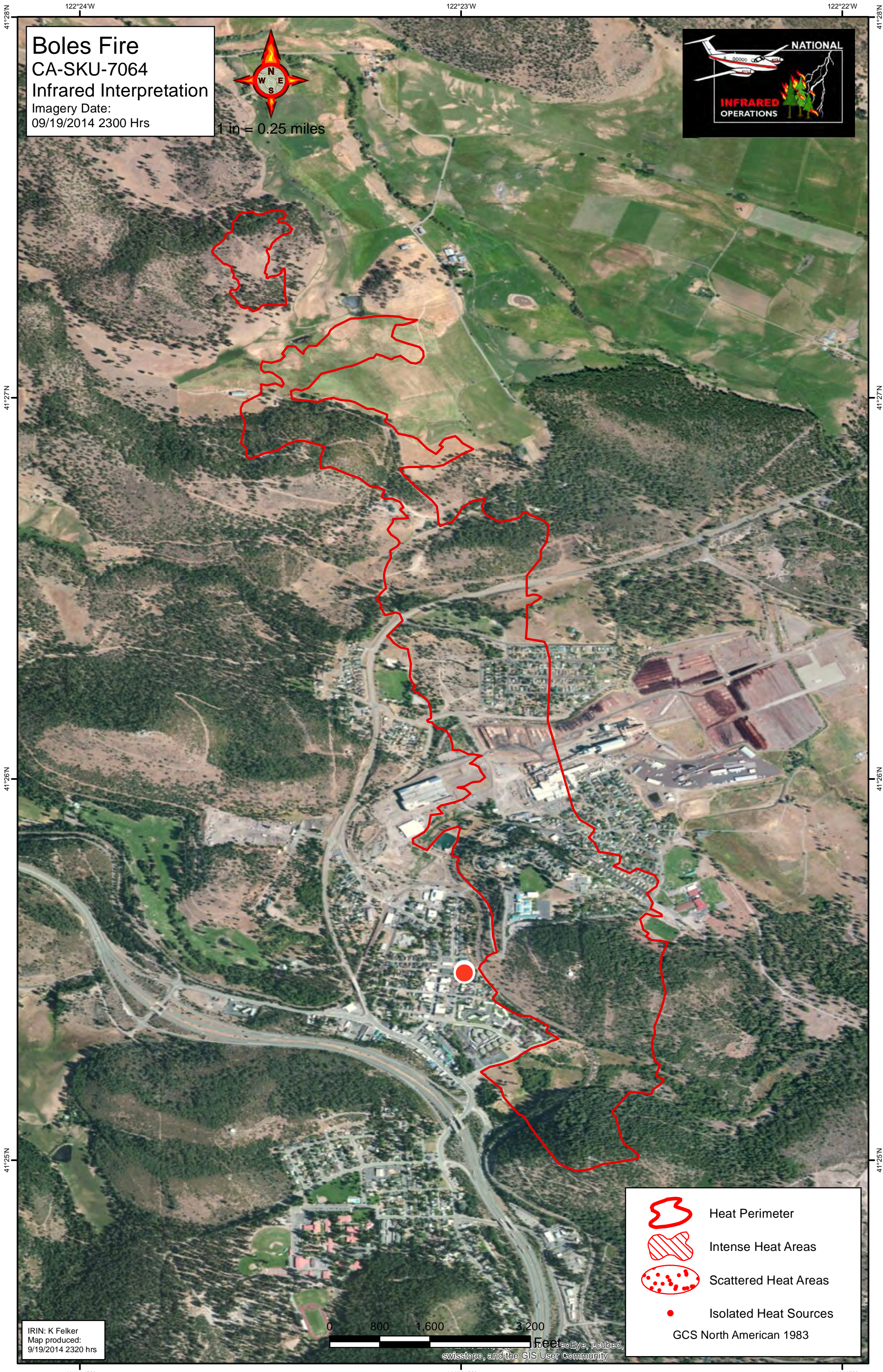






Boles Fire
CA-SKU-7064
Infrared Interpretation
Imagery Date:
09/19/2014 2300 Hrs



1 in = 0.25 miles



-  Heat Perimeter
-  Intense Heat Areas
-  Scattered Heat Areas
-  Isolated Heat Sources

GCS North American 1983

IRIN: K Felker
Map produced:
9/19/2014 2320 hrs



Imagery provided by GeoEye, Earthstar, GeoEye, Earthstar, swisstopo, and the GIS User Community