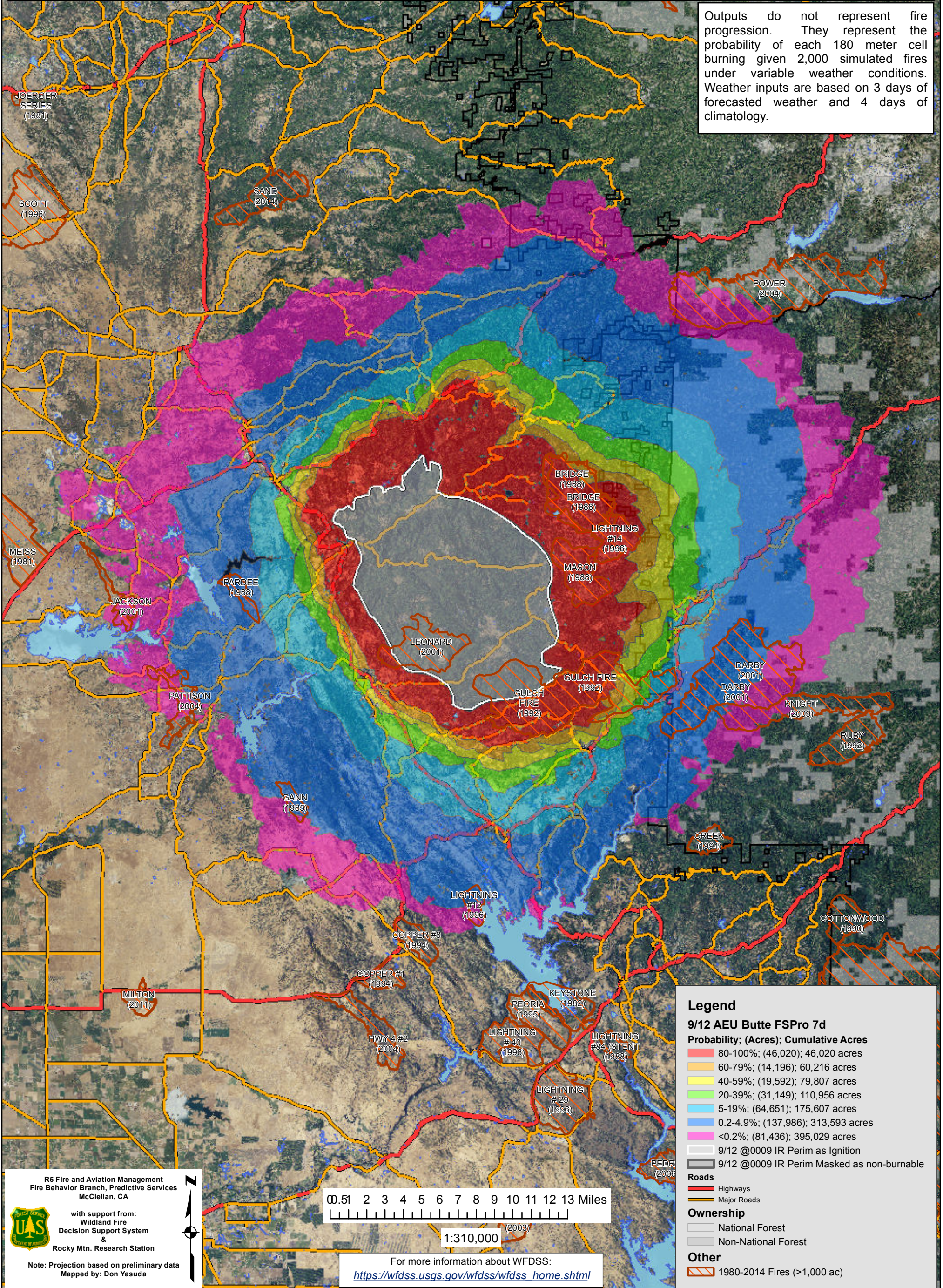


September 12, 2015

WFDSS - FSPRO PROBABILITY: AEU Butte Fire (2015-CAAEU-024918)
09/12 - 7 DAYS - 180m Res; 2000 Fire Sim
ERC: 42701 - MOUNT ZION (4.0 miles); WINDS: 42701 - MOUNT ZION (4.0 miles)
File: 9.12.2015 7days 2,000 fires shorter burn periods; Analyst: Philip Bowden

Notes: Information used was from the general weather forecast and products from Predictive Services. This analysis is for 7 days of fire spread probability. The ignition used was the 9/12/2015 0009 IR perimeter and the Mount Zion RAWs was used for both Fuel Moisture (ERC) and wind. Scott/Reinhardt crown fire model was used to capture the high potential of crown fires under current conditions. This analysis has shorter burn periods than the earlier version today, this should better represent the cooling trend the next few day. **This analysis does not account for any suppression actions. Due to the long term drought the fire may exhibit low probability spread.** If any questions contact Phil Bowden: pbowden@fs.fed.us

Outputs do not represent fire progression. They represent the probability of each 180 meter cell burning given 2,000 simulated fires under variable weather conditions. Weather inputs are based on 3 days of forecasted weather and 4 days of climatology.



Legend

9/12 AEU Butte FSPro 7d

Probability; (Acres); Cumulative Acres

- 80-100%; (46,020); 46,020 acres
- 60-79%; (14,196); 60,216 acres
- 40-59%; (19,592); 79,807 acres
- 20-39%; (31,149); 110,956 acres
- 5-19%; (64,651); 175,607 acres
- 0.2-4.9%; (137,986); 313,593 acres
- <0.2%; (81,436); 395,029 acres

9/12 @0009 IR Perim as Ignition

9/12 @0009 IR Perim Masked as non-burnable

Roads

- Highways
- Major Roads

Ownership

- National Forest
- Non-National Forest

Other

- 1980-2014 Fires (>1,000 ac)

R5 Fire and Aviation Management
 Fire Behavior Branch, Predictive Services
 McClellan, CA

with support from:
 Wildland Fire
 Decision Support System
 &
 Rocky Mtn. Research Station

Note: Projection based on preliminary data
 Mapped by: Don Yasuda

0 0.51 2 3 4 5 6 7 8 9 10 11 12 13 Miles

1:310,000

For more information about WFDSS:
https://wfdss.usgs.gov/wfdss/wfdss_home.shtml