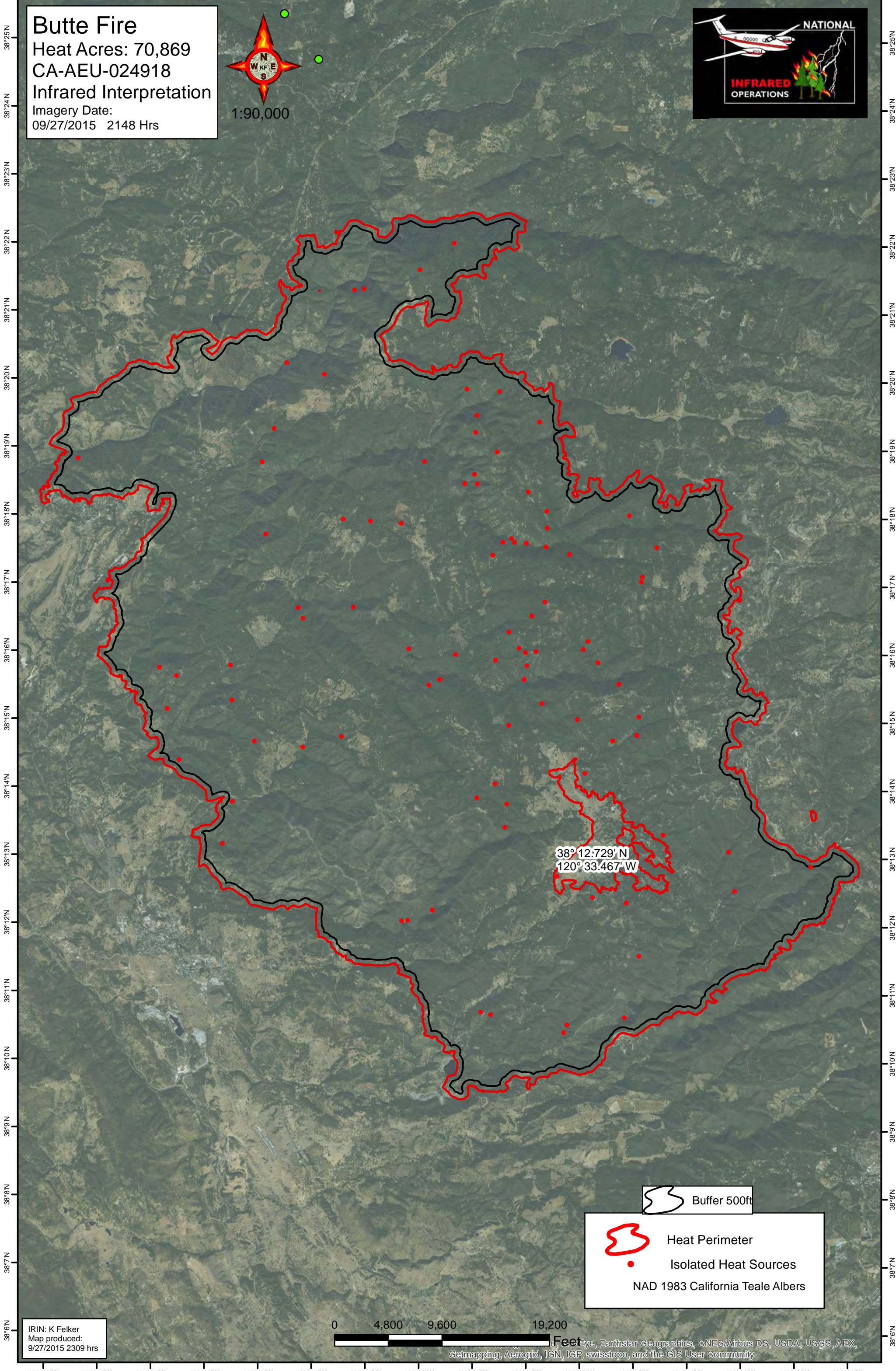


120°43'W 120°42'W 120°41'W 120°40'W 120°39'W 120°38'W 120°37'W 120°36'W 120°35'W 120°34'W 120°33'W 120°32'W 120°31'W 120°30'W 120°29'W 120°28'W

**Butte Fire**  
Heat Acres: 70,869  
CA-AEU-024918  
Infrared Interpretation  
Imagery Date:  
09/27/2015 2148 Hrs



38° 12.729' N  
120° 33.467' W

Buffer 500ft

Heat Perimeter  
 Isolated Heat Sources  
NAD 1983 California Teale Albers

0 4,800 9,600 19,200  
Feet

IRIN: K Felker  
Map produced:  
9/27/2015 2309 hrs

120°43'W 120°42'W 120°41'W 120°40'W 120°39'W 120°38'W 120°37'W 120°36'W 120°35'W 120°34'W 120°33'W 120°32'W 120°31'W 120°30'W 120°29'W 120°28'W

Map data provided by: GeoEye, Earthstar Geographics, CNES/Airbus DS, USDA, USGS, AEX, Getmapping, Aerogrid, IGN, IGP, swisstopo, and the GIS User Community