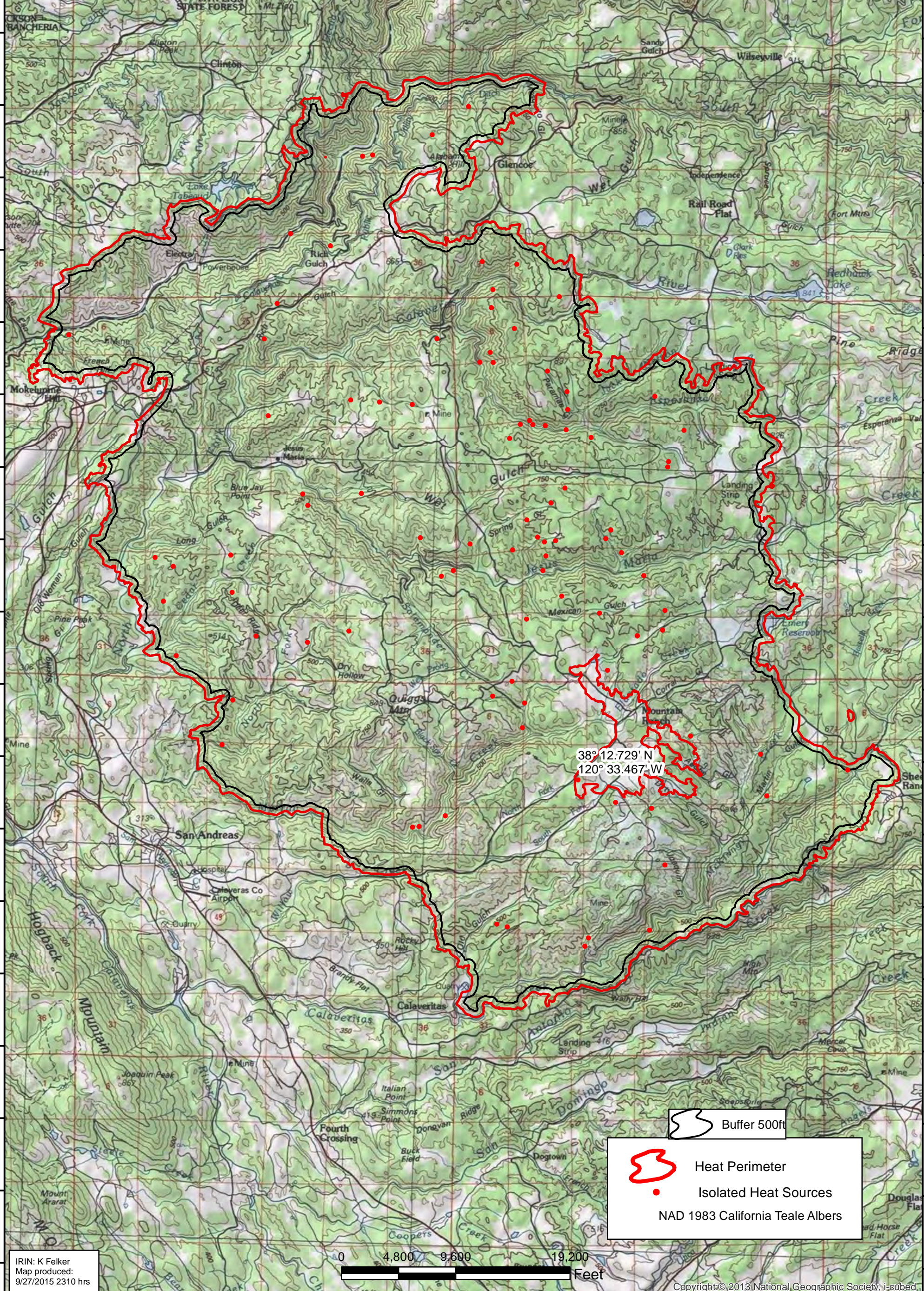


120°43'W 120°42'W 120°41'W 120°40'W 120°39'W 120°38'W 120°37'W 120°36'W 120°35'W 120°34'W 120°33'W 120°32'W 120°31'W 120°30'W 120°29'W 120°28'W

Butte Fire
Heat Acres: 70,869
CA-AEU-024918
Infrared Interpretation
Imagery Date:
09/27/2015 2148 Hrs



38°12.729' N
120°33.467' W

Buffer 500ft



Heat Perimeter



Isolated Heat Sources

NAD 1983 California Teale Albers

IRIN: K Felker
Map produced:
9/27/2015 2310 hrs

0 4,800 9,600 19,200
Feet

Copyright © 2013 National Geographic Society, i-cubed

120°43'W 120°42'W 120°41'W 120°40'W 120°39'W 120°38'W 120°37'W 120°36'W 120°35'W 120°34'W 120°33'W 120°32'W 120°31'W 120°30'W 120°29'W 120°28'W