



# Lumpkin Incident

15-CA-BTU-013357

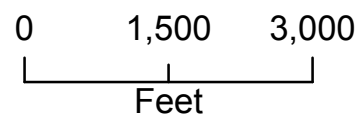
9/18/2015

IAP Map

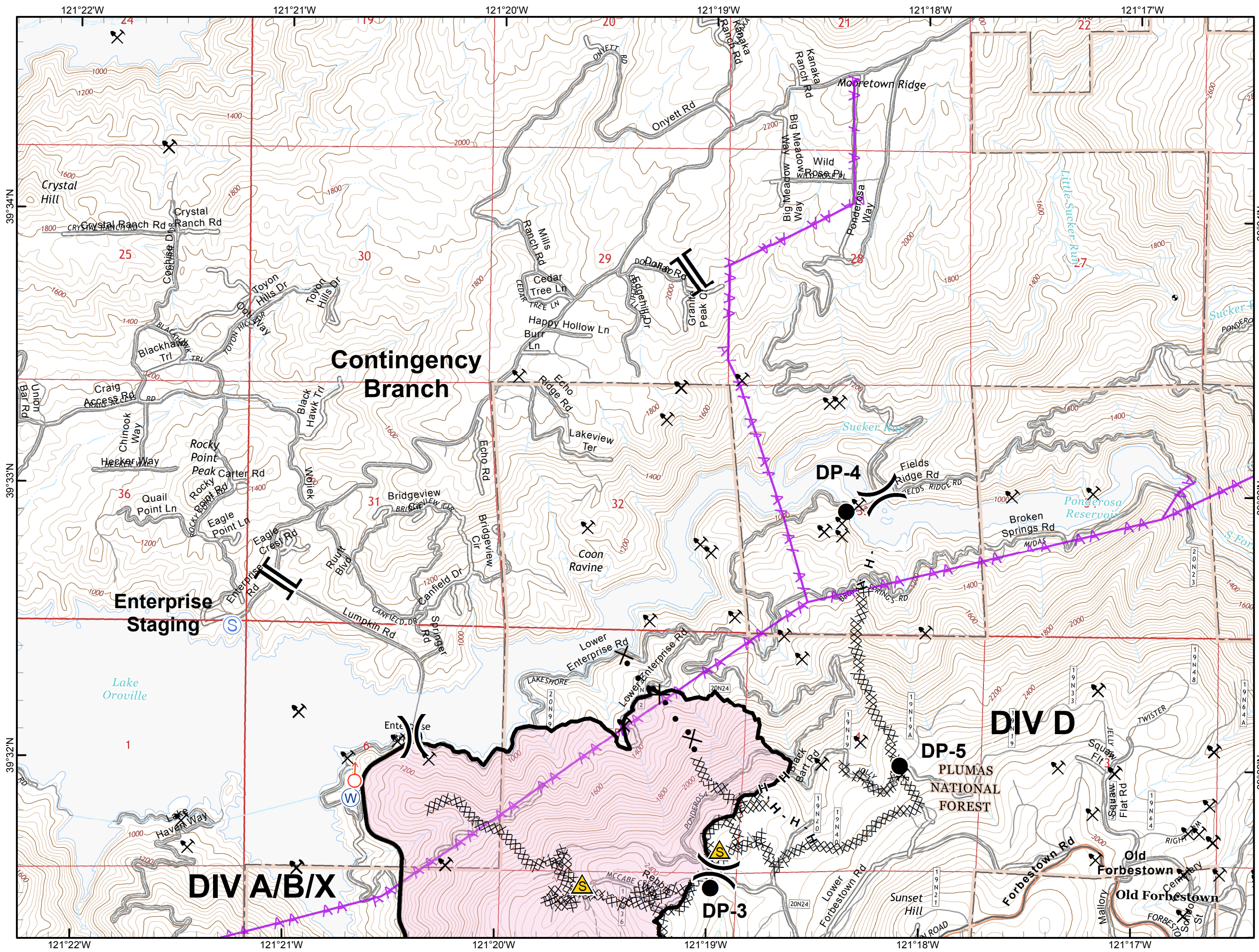
Page 1

### Legend

- Division
- Branch
- Completed Line
- Uncontrolled Fire Edge
- Completed Dozer Line
- Proposed Dozer Line
- Powerlines
- Drop Point
- Spot Fire
- Staging Area
- Water Source
- Safety Zone
- Mining Hazard



Dresselhaus  
9/17/2015 @ 18:42  
NAD83





# Lumpkin Incident

15-CA-BTU-013357

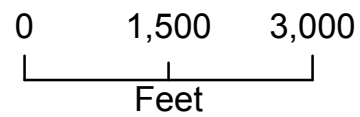
9/18/2015

IAP Map

Page 2

### Legend

- Division
- Branch
- Completed Line
- Uncontrolled Fire Edge
- Completed Dozer Line
- Proposed Dozer Line
- Powerlines
- Drop Point
- Spot Fire
- Staging Area
- Water Source
- Safety Zone
- Mining Hazard



Dresselhaus  
9/17/2015 @ 18:42  
NAD83

