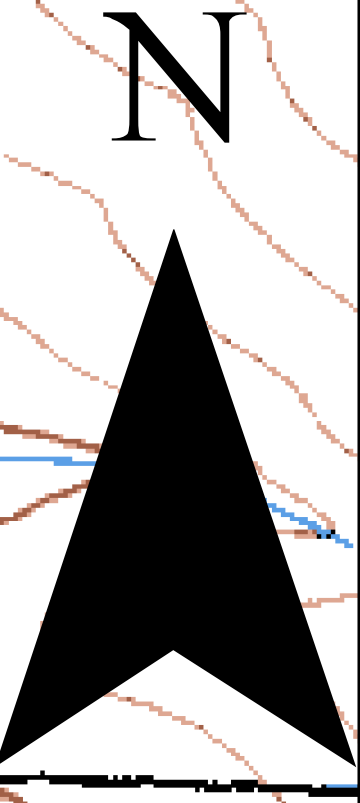


QUEEN INCIDENT
 INC # HUU 5420
 OPERATIONAL SHIFT
 JULY 27TH, 2015



BRANCH II
Fire 4
47 acres

BRANCH II
Fire 3
10 acres

BRANCH III
Fire 2
9.2 acres

BRANCH II
Fire 5
Inaccurate track

BRANCH I
Fire 6
21.2 acres

BRANCH III
Fire 1
25.6 acres

BRANCH I
Fire 7
1.1 acres

BRANCH I
Fire 8
7 acres

DP-#6

LEGEND

- BRANCH I = FIRES 6,7 & 8**
DIV V = 6 & 7 DIV Y = 8
- BRANCH II = FIRES 3,4 & 5**
DIV M = 5 DIV L = 4 DIV K = 3
- BRANCH III = FIRES 1 & 2**
DIV A = 1 DIV C = 2

Handline (complete & areas need improvement)

Coordinate System: NAD 1927 California Teale Albers
 Projection: Albers
 Datum: North American 1927
 False Easting: 0.0000
 False Northing: -4,000,000.0000
 Central Meridian: -120.0000
 Standard Parallel 1: 34.0000
 Standard Parallel 2: 40.5000
 Latitude Of Origin: 0.0000
 Units: Meter

Reference Scale: 1:0

