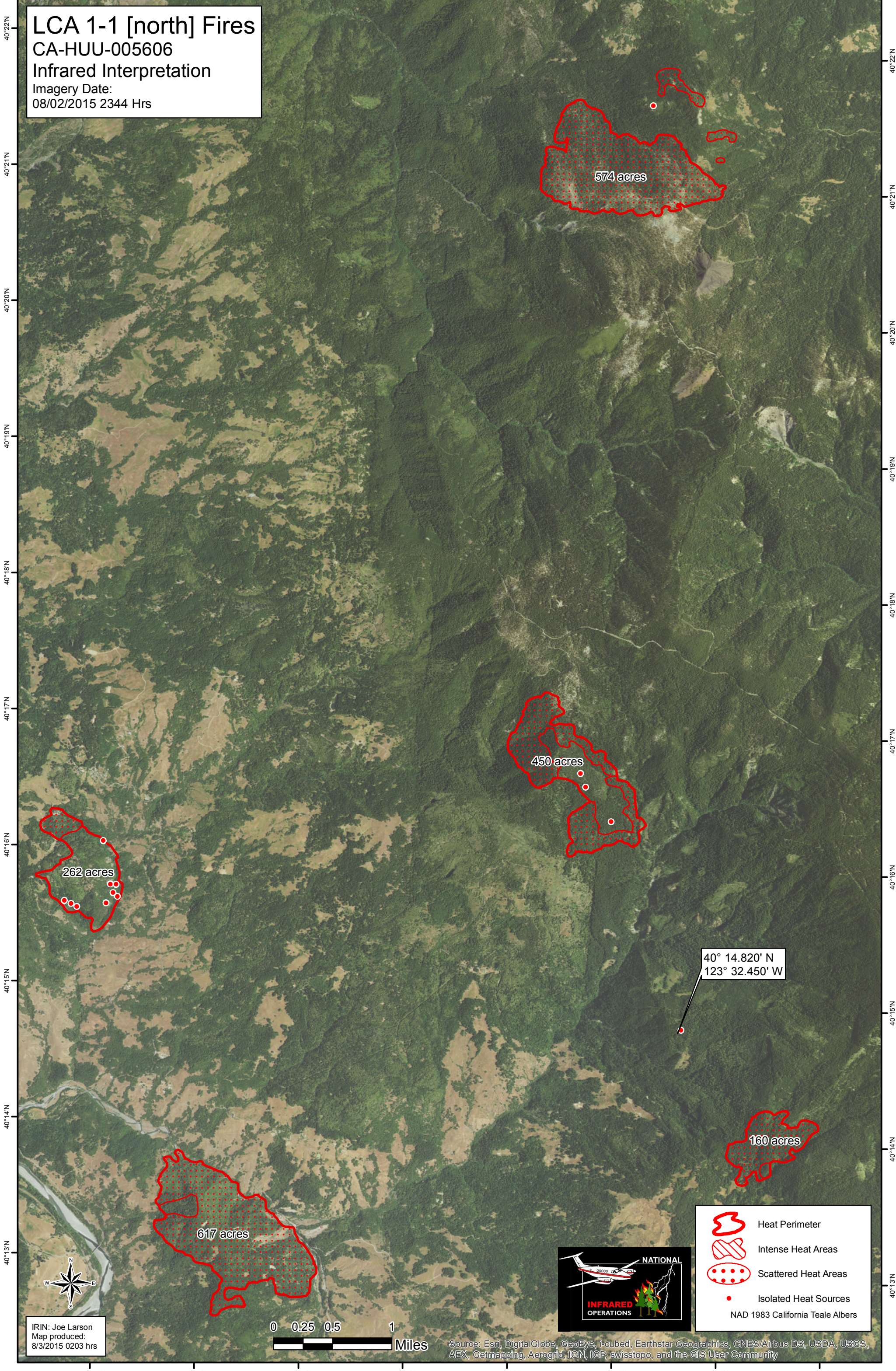


123°39'W 123°38'W 123°37'W 123°36'W 123°35'W 123°34'W 123°33'W 123°32'W 123°31'W

LCA 1-1 [north] Fires
CA-HUU-005606
Infrared Interpretation
Imagery Date:
08/02/2015 2344 Hrs



574 acres

450 acres





262 acres

617 acres

160 acres

40° 14.820' N
123° 32.450' W



-  Heat Perimeter
 -  Intense Heat Areas
 -  Scattered Heat Areas
 -  Isolated Heat Sources
- NAD 1983 California Teale Albers

IRIN: Joe Larson
Map produced:
8/3/2015 0203 hrs

0 0.25 0.5 1 Miles

Source: Esri, DigitalGlobe, GeoEye, i-cubed, Earthstar Geographics, CNES/Airbus DS, USDA, USGS, AEX, Getmapping, Aerogrid, IGN, IGP, swisstopo, and the GIS User Community

123°38'W 123°37'W 123°36'W 123°35'W 123°34'W 123°33'W 123°32'W 123°31'W