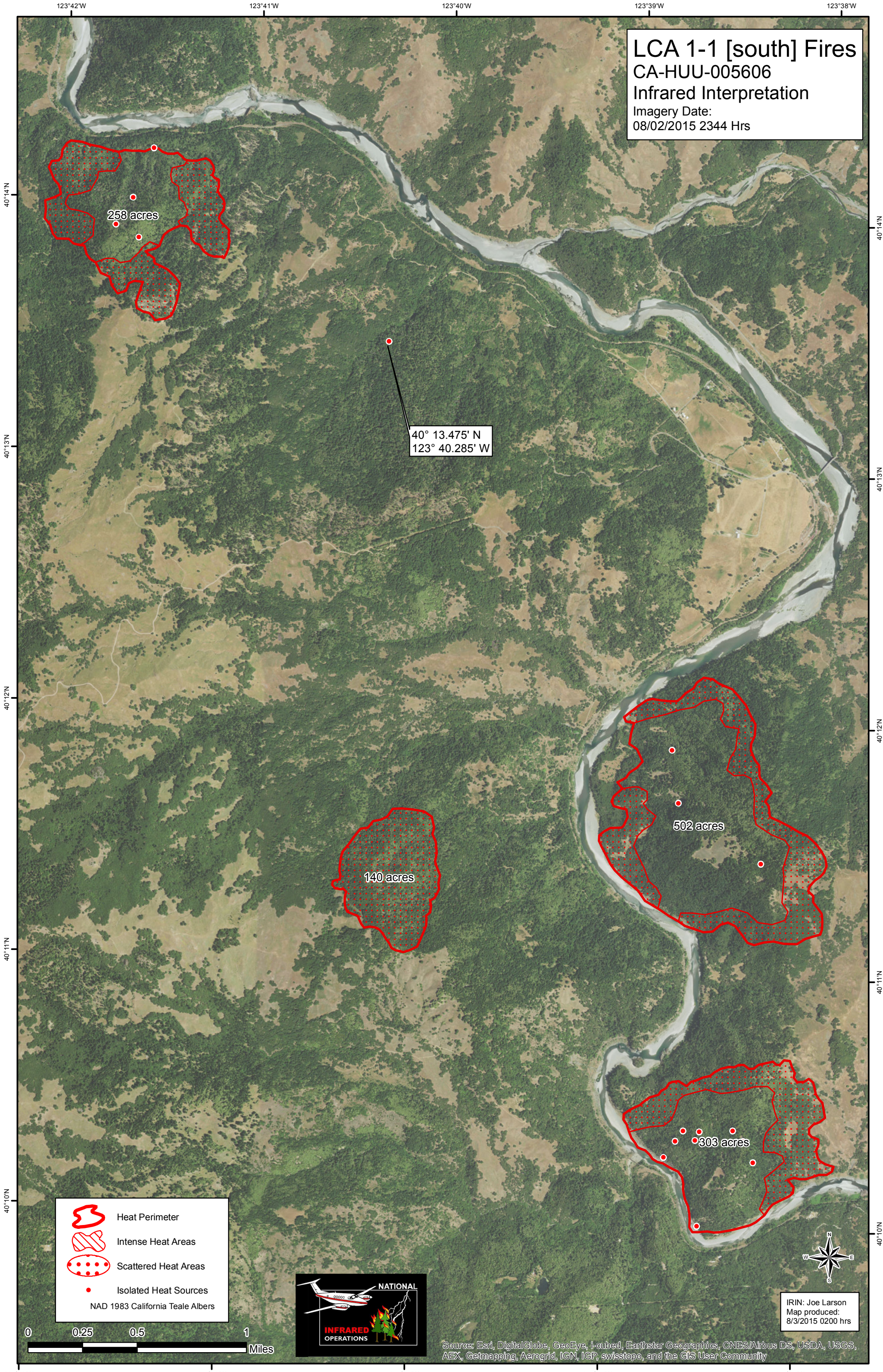


LCA 1-1 [south] Fires
CA-HUU-005606
Infrared Interpretation
 Imagery Date:
 08/02/2015 2344 Hrs







258 acres

40° 13.475' N
 123° 40.285' W

140 acres

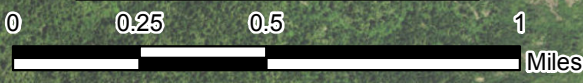
502 acres

303 acres

-  Heat Perimeter
 -  Intense Heat Areas
 -  Scattered Heat Areas
 -  Isolated Heat Sources
- NAD 1983 California Teale Albers



IRIN: Joe Larson
 Map produced:
 8/3/2015 0200 hrs



Source: Esri, DigitalGlobe, GeoEye, i-cubed, Earthstar Geographics, CNES/Airbus DS, USDA, USGS, AEX, Getmapping, Aerogrid, IGN, IGP, swisstopo, and the GIS User Community