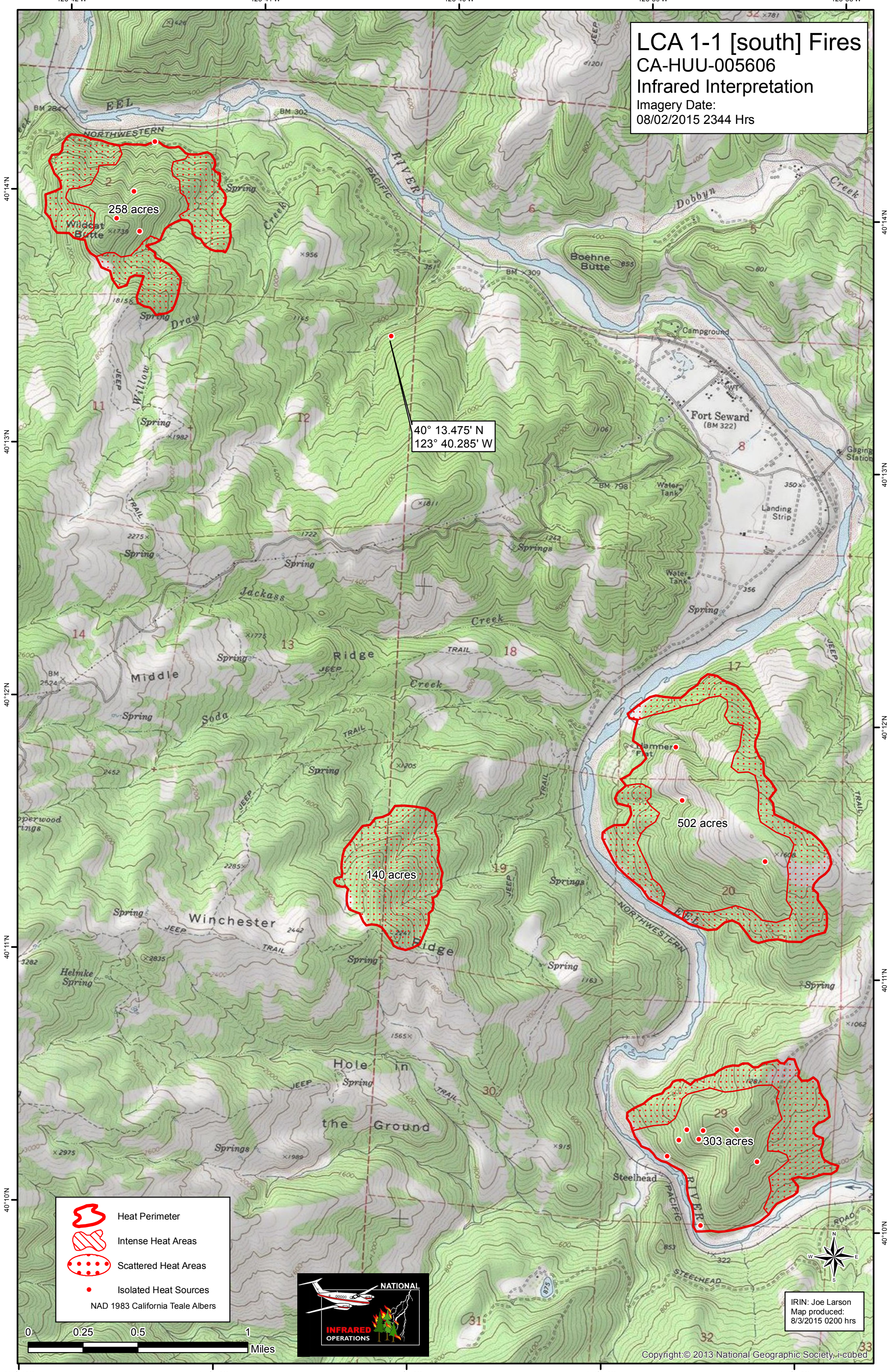


LCA 1-1 [south] Fires
CA-HUU-005606
Infrared Interpretation
 Imagery Date:
 08/02/2015 2344 Hrs



40° 13.475' N
 123° 40.285' W

- Heat Perimeter
 - Intense Heat Areas
 - Scattered Heat Areas
 - Isolated Heat Sources
- NAD 1983 California Teale Albers

0 0.25 0.5 1 Miles



IRIN: Joe Larson
 Map produced:
 8/3/2015 0200 hrs