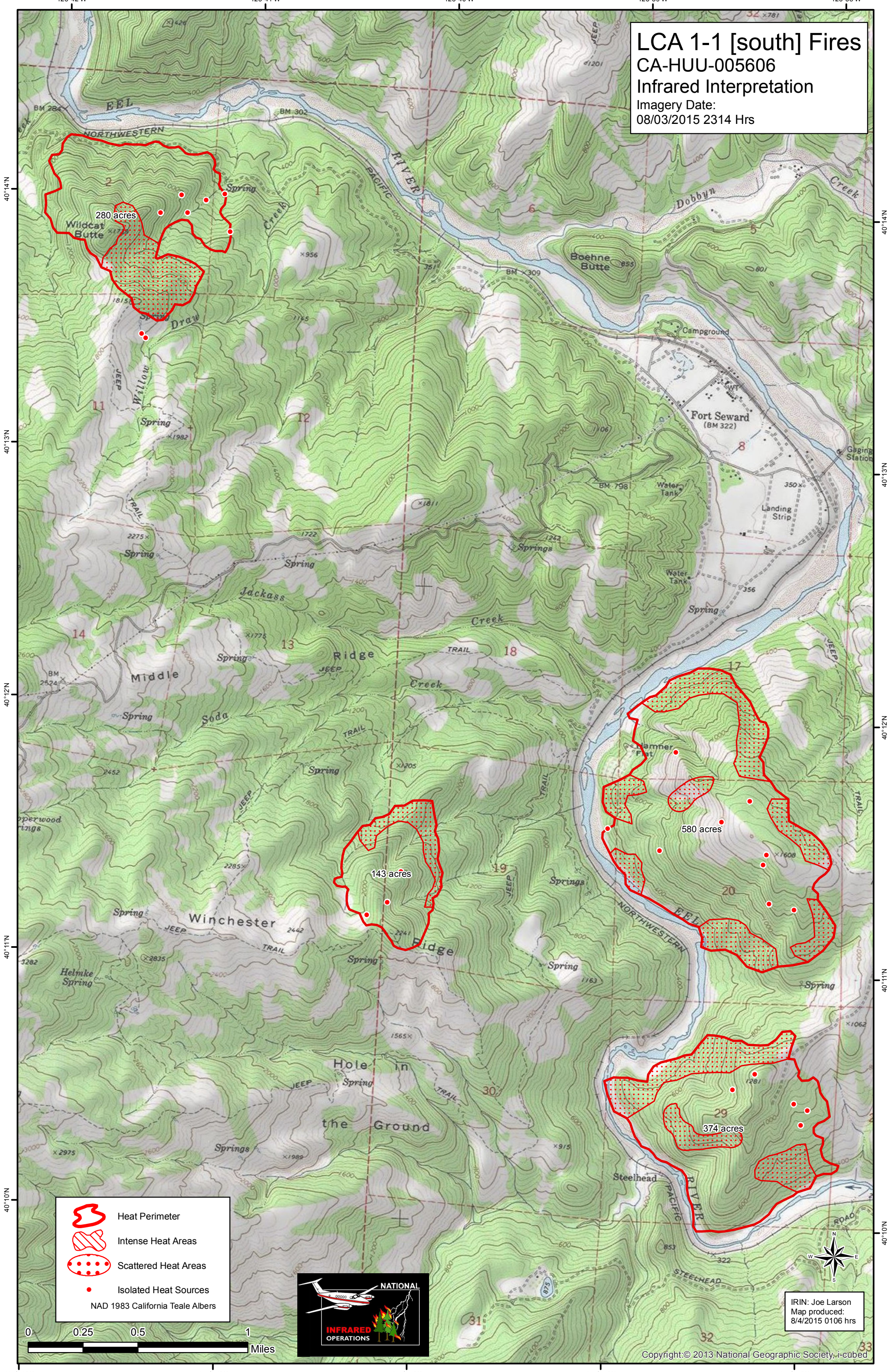






LCA 1-1 [south] Fires
CA-HUU-005606
Infrared Interpretation
 Imagery Date:
 08/03/2015 2314 Hrs



-  Heat Perimeter
-  Intense Heat Areas
-  Scattered Heat Areas
-  Isolated Heat Sources

NAD 1983 California Teale Albers



IRIN: Joe Larson
 Map produced:
 8/4/2015 0106 hrs