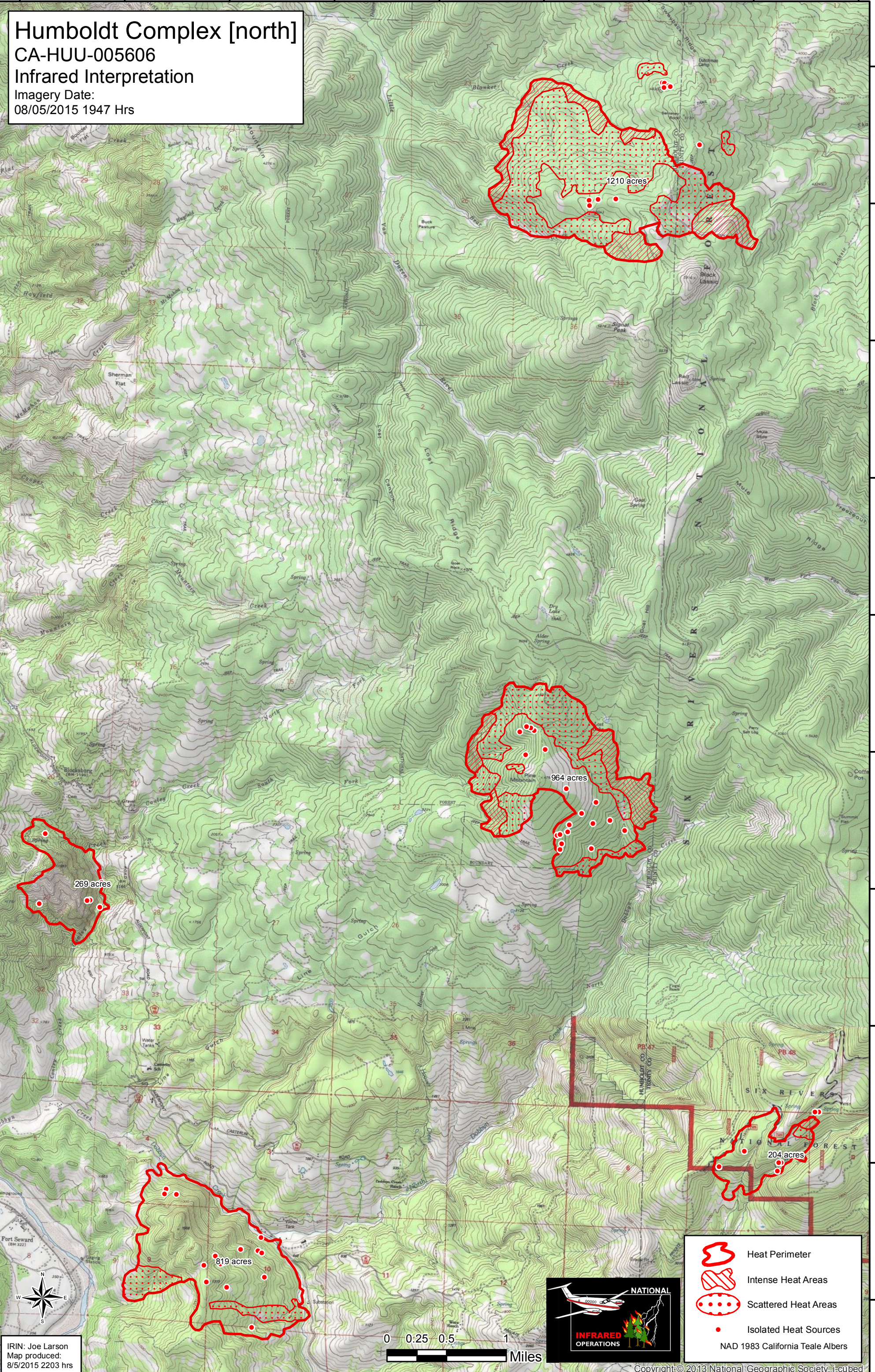






123°39'W 123°38'W 123°37'W 123°36'W 123°35'W 123°34'W 123°33'W 123°32'W 123°31'W

40°22'N 40°21'N 40°20'N 40°19'N 40°18'N 40°17'N 40°16'N 40°15'N 40°14'N 40°13'N

**Humboldt Complex [north]**  
CA-HUU-005606  
Infrared Interpretation  
Imagery Date:  
08/05/2015 1947 Hrs



-  Heat Perimeter
-  Intense Heat Areas
-  Scattered Heat Areas
-  Isolated Heat Sources

NAD 1983 California Teale Albers

IRIN: Joe Larson  
Map produced:  
8/5/2015 2203 hrs

0 0.25 0.5 1 Miles



123°38'W 123°37'W 123°36'W 123°35'W 123°34'W 123°33'W 123°32'W 123°31'W