

Humboldt Complex [south]

CA-HUU-005606

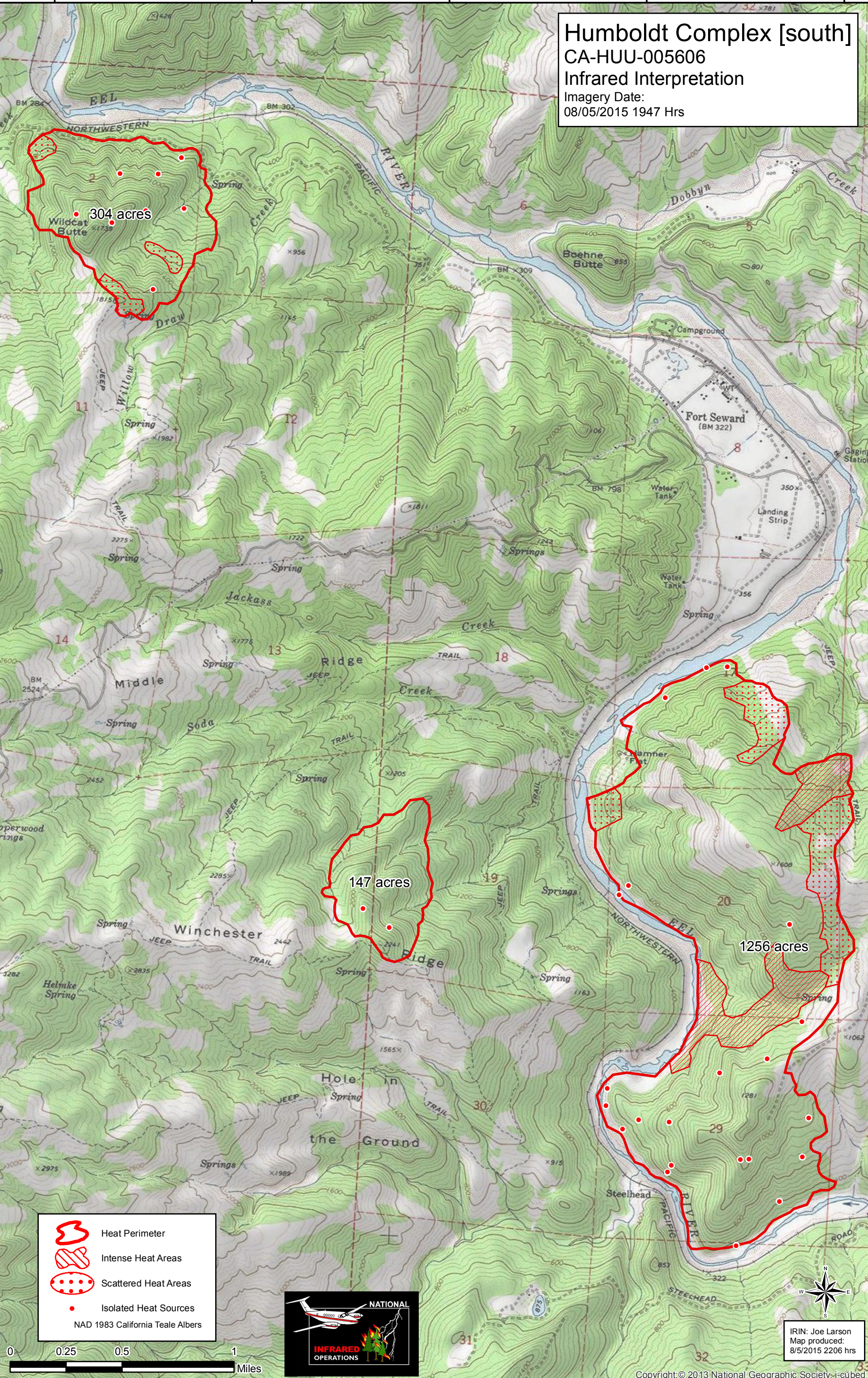
Infrared Interpretation





Imagery Date:

08/05/2015 1947 Hrs

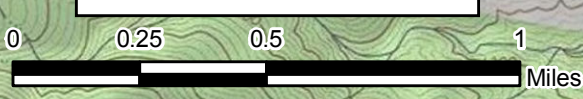
40°14'N
40°13'N
40°12'N
40°11'N
40°10'N

40°14'N
40°13'N
40°12'N
40°11'N
40°10'N



-  Heat Perimeter
-  Intense Heat Areas
-  Scattered Heat Areas
-  Isolated Heat Sources

NAD 1983 California Teale Albers



IRIN: Joe Larson
Map produced:
8/5/2015 2206 hrs