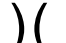




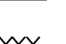


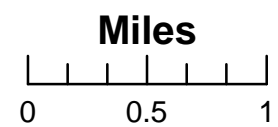
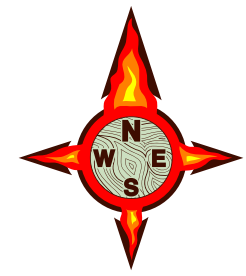




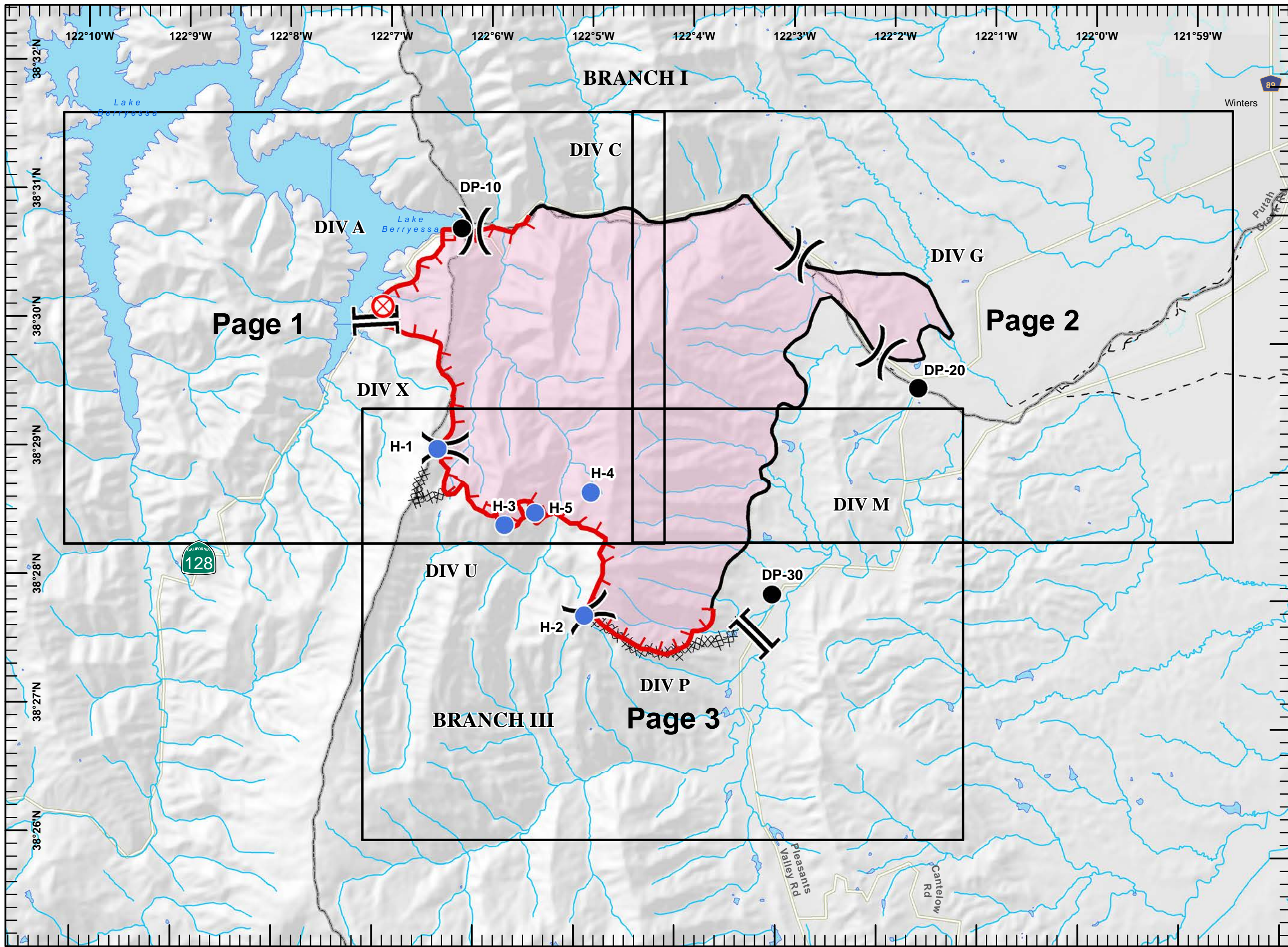
**IAP Index**  
**Wragg Incident**  
**CA-LNU 006678**  
**July 25, 2015**  
**Nad 83**

**Legend**

-  Division
-  Branch
-  Drop Point
-  Fire Origin
-  Helispot
-  Completed Line
-  Completed Dozer Line
-  Uncontrolled Fire Edge



Team 6  
July 24, 2015  
2005 Hours

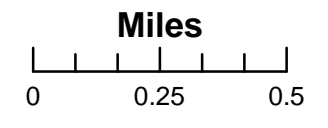
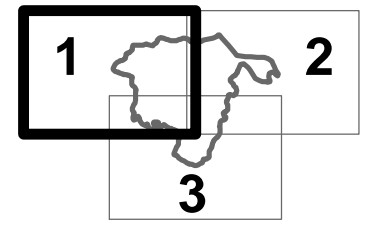




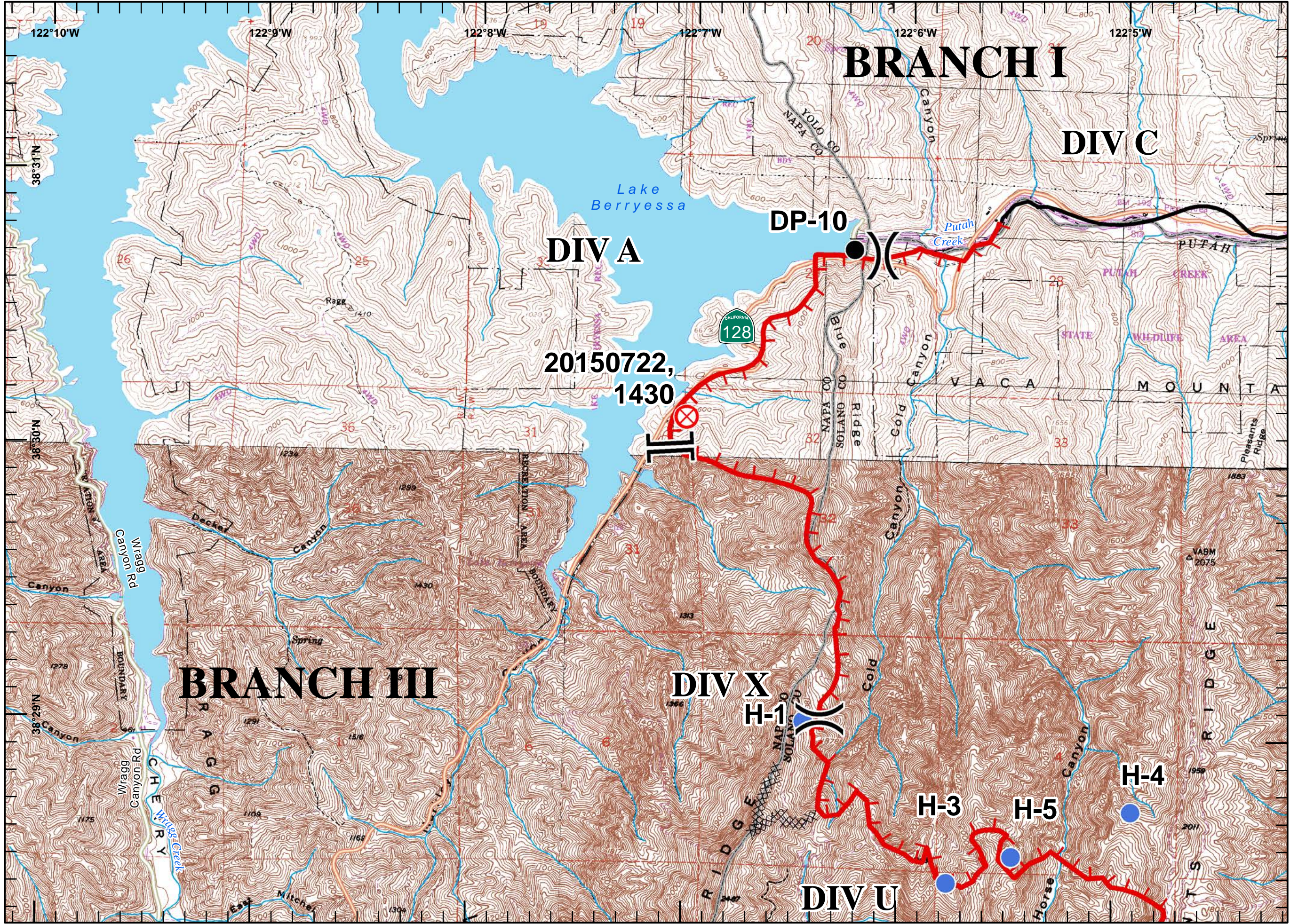
IAP Map  
Wragg Incident  
CA-LNU 006678  
July 25, 2015  
Nad 83  
Page 1

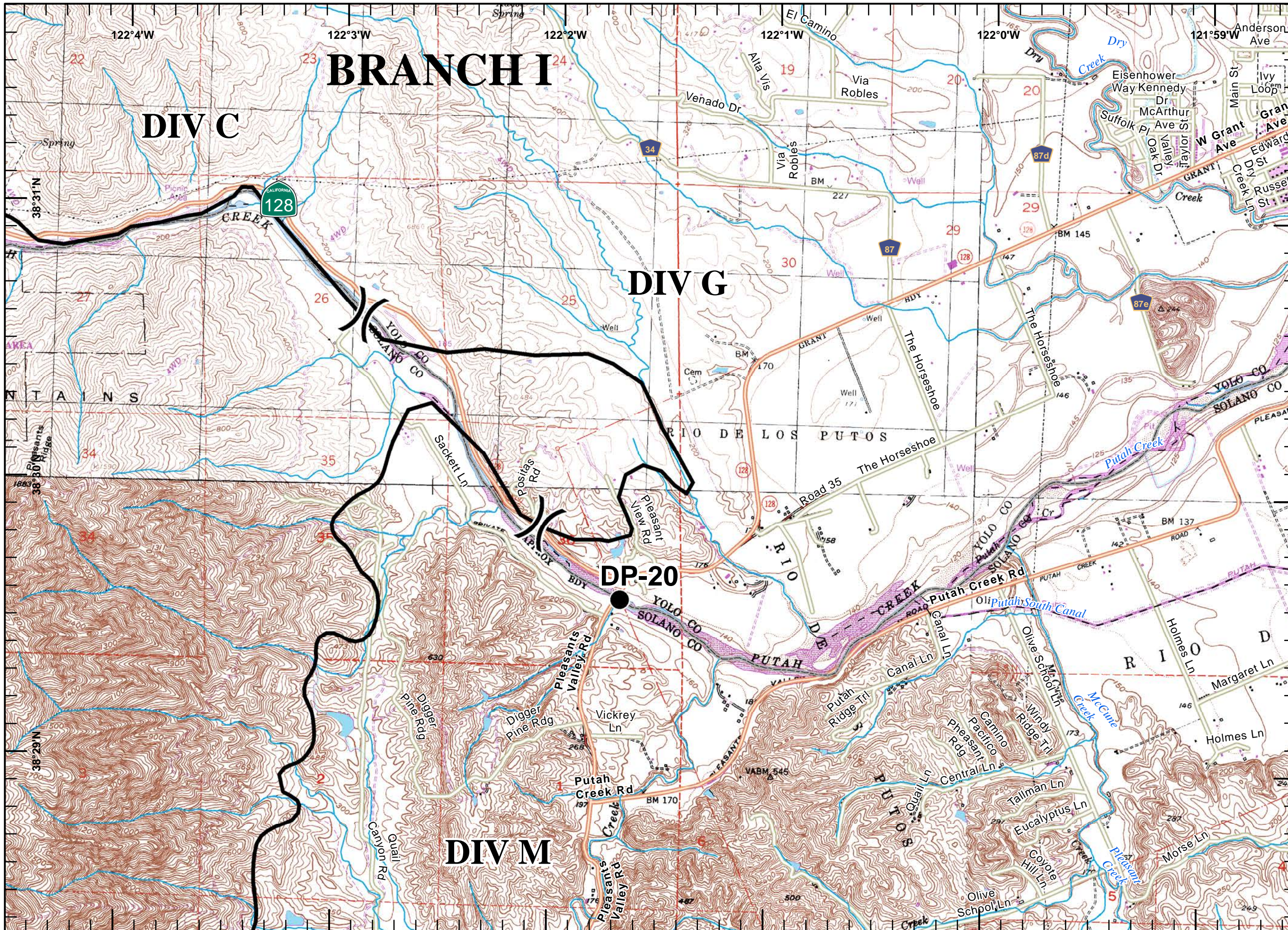
Legend

- ) ( Division
- ]] Branch
- Drop Point
- ⊗ Fire Origin
- Helispot
- Completed Line
- ⊗ Completed Dozer Line
- └ Uncontrolled Fire Edge



Team 6 GIS  
7/24/2015  
2332 Hours

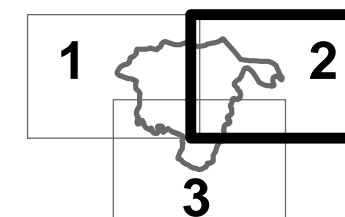




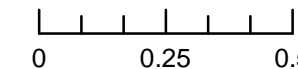
**IAP Map**  
**Wragg Incident**  
**CA-LNU 006678**  
**July 25, 2015**  
**Nad 83**  
**Page 2**

**Legend**

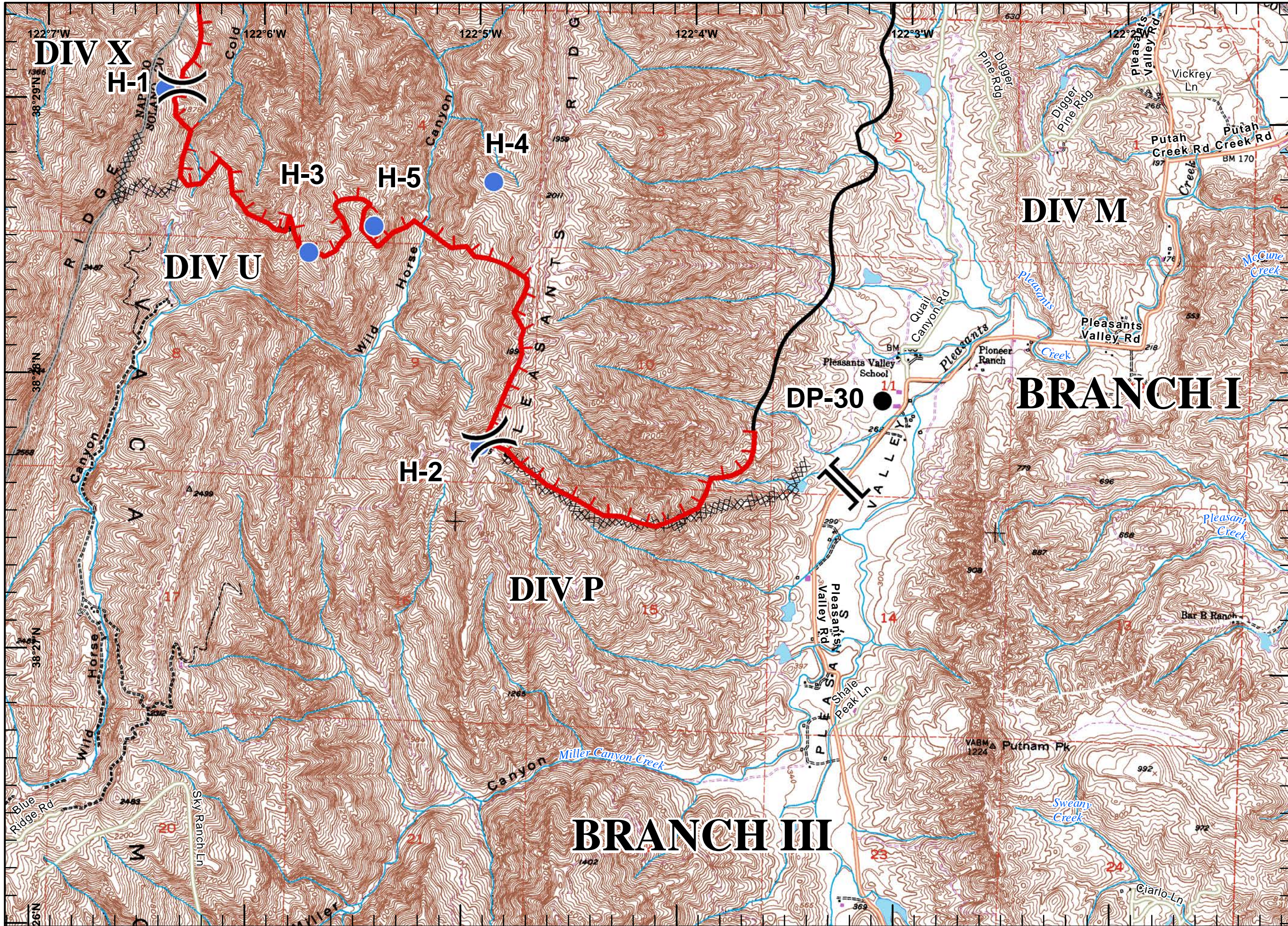
- ) ( Division
- [[ Branch
- Drop Point
- ⊗ Fire Origin
- Helispot
- Completed Line
- ⊗ Completed Dozer Line
- ┌ Uncontrolled Fire Edge



**Miles**



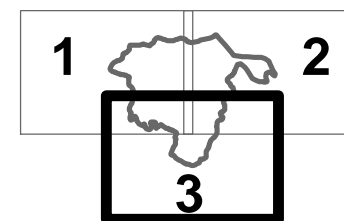
Team 6 GIS  
 7/24/2015  
 2332 Hours



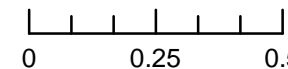
**IAP Map**  
**Wragg Incident**  
**CA-LNU 006678**  
**July 25, 2015**  
**Nad 83**  
**Page 3**

**Legend**

- ) ( Division
- [[ Branch
- Drop Point
- ⊗ Fire Origin
- Helispot
- Completed Line
- ⊗ Completed Dozer Line
- ┌ Uncontrolled Fire Edge



**Miles**



Team 6 GIS  
 7/24/2015  
 2332 Hours