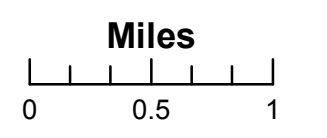




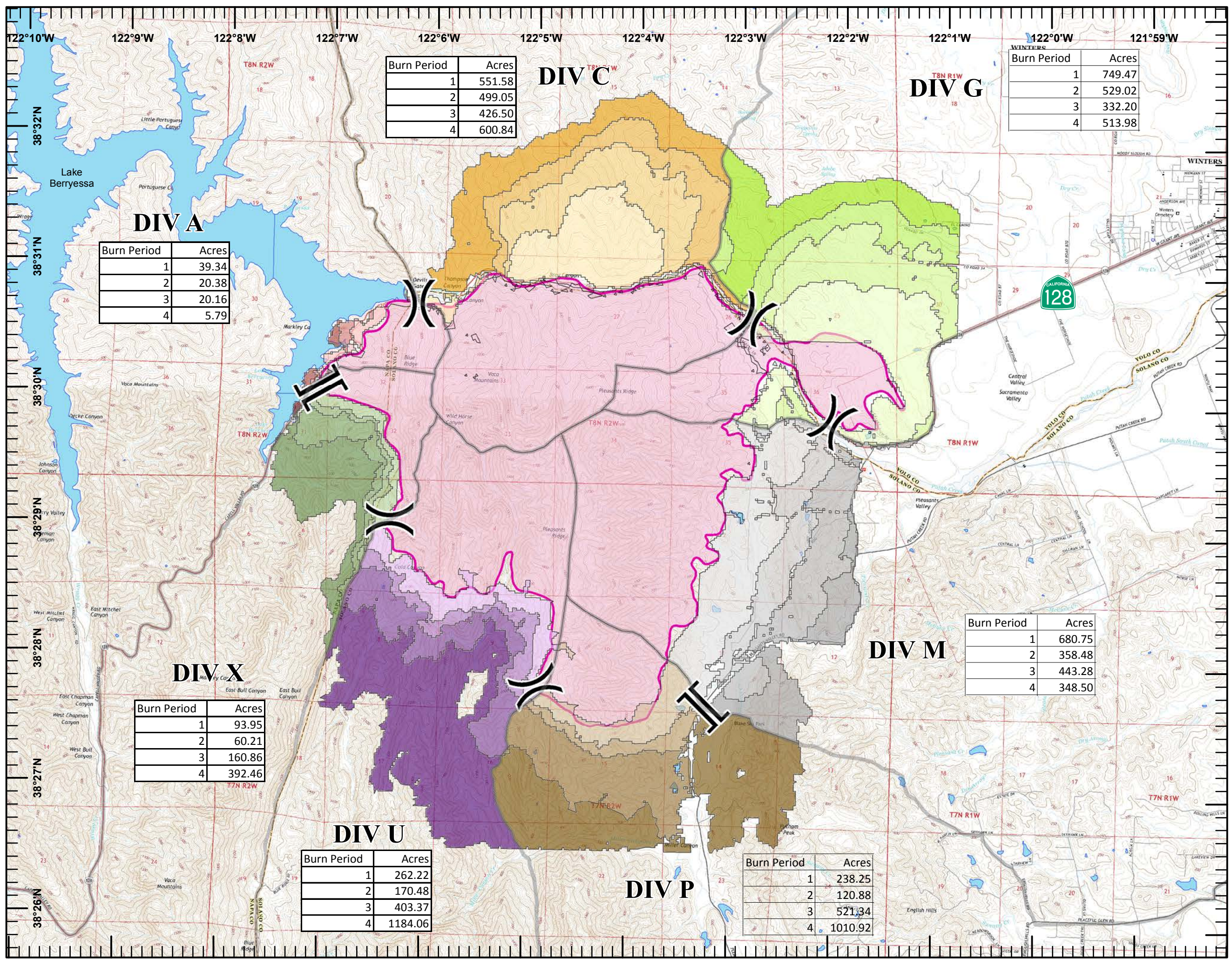
Wragg Incident
CA-LNU 006678
July 26, 2015
Nad 83

- Legend**
-) (Division
 - [[Branch
 - Fire Perimeter

- Division by Burn Period***
- A, 1
 - A, 2
 - A, 3
 - A, 4
 - C, 1
 - C, 2
 - C, 3
 - C, 4
 - G, 1
 - G, 2
 - G, 3
 - G, 4
 - M, 1
 - M, 2
 - M, 3
 - M, 4
 - P, 1
 - P, 2
 - P, 3
 - P, 4
 - U, 1
 - U, 2
 - U, 3
 - U, 4
 - X, 1
 - X, 2
 - X, 3
 - X, 4
- *Burn Period = 24 hours



Team 6 GIS
 7/25/2015
 2104 Hours



Burn Period	Acres
1	551.58
2	499.05
3	426.50
4	600.84

Burn Period	Acres
1	749.47
2	529.02
3	332.20
4	513.98

Burn Period	Acres
1	39.34
2	20.38
3	20.16
4	5.79

Burn Period	Acres
1	680.75
2	358.48
3	443.28
4	348.50

Burn Period	Acres
1	93.95
2	60.21
3	160.86
4	392.46

Burn Period	Acres
1	262.22
2	170.48
3	403.37
4	1184.06

Burn Period	Acres
1	238.25
2	120.88
3	521.34
4	1010.92