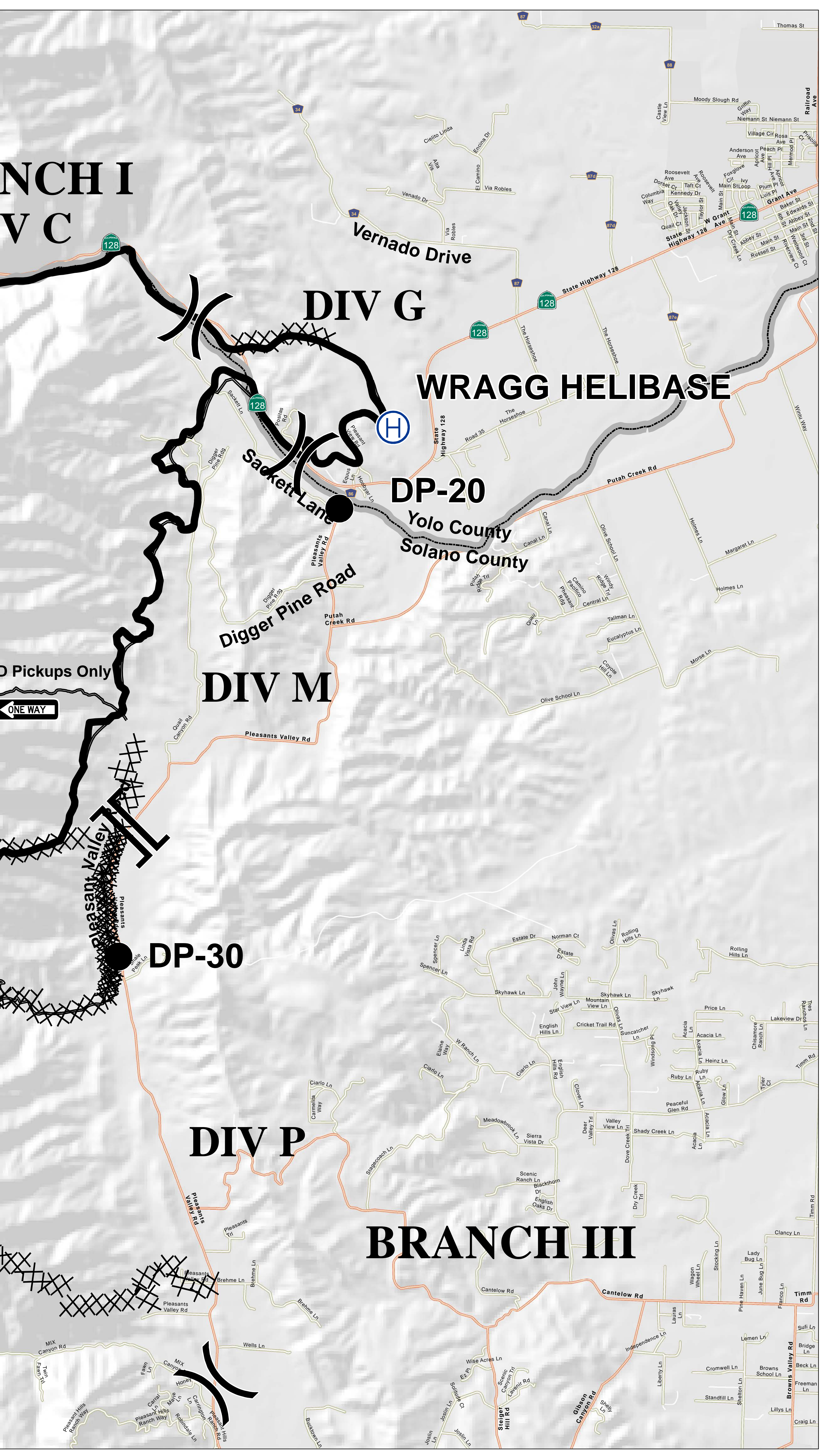


BRANCH I
VC



Mapping Map
g Incident
NU 006678
7 31 2015
51 Acres



- Uncontrolled Fire Edge
- Completed Line
- Completed Dozer Line
- Proposed Dozer Line
- Division
- Branch
- County Line
- Drop Point
- Helispot
- Helibase
- Origin
- Repeater