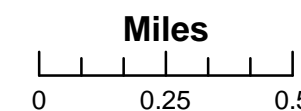
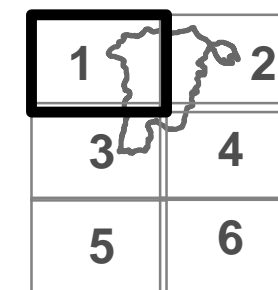




IAP MAP

Wragg Incident
 CA LNU 006678
 August 2, 2015
 8,051 Acres
 Nad 83
 Page 1

- Division
- Branch
- Drop Point
- Fire Origin
- Helibase
- Helispot
- Repeater
- Completed Line
- Completed Dozer Line
- Uncontrolled Fire Edge



Team 6 GIS
 August 01, 2015
 1924 Hours

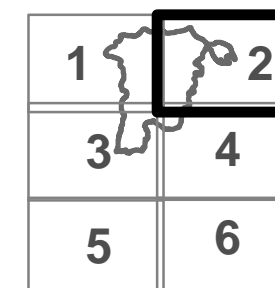




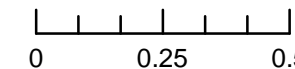
IAP MAP

Wragg Incident
 CA LNU 006678
 August 2, 2015
 8,051 Acres
 Nad 83
 Page 2

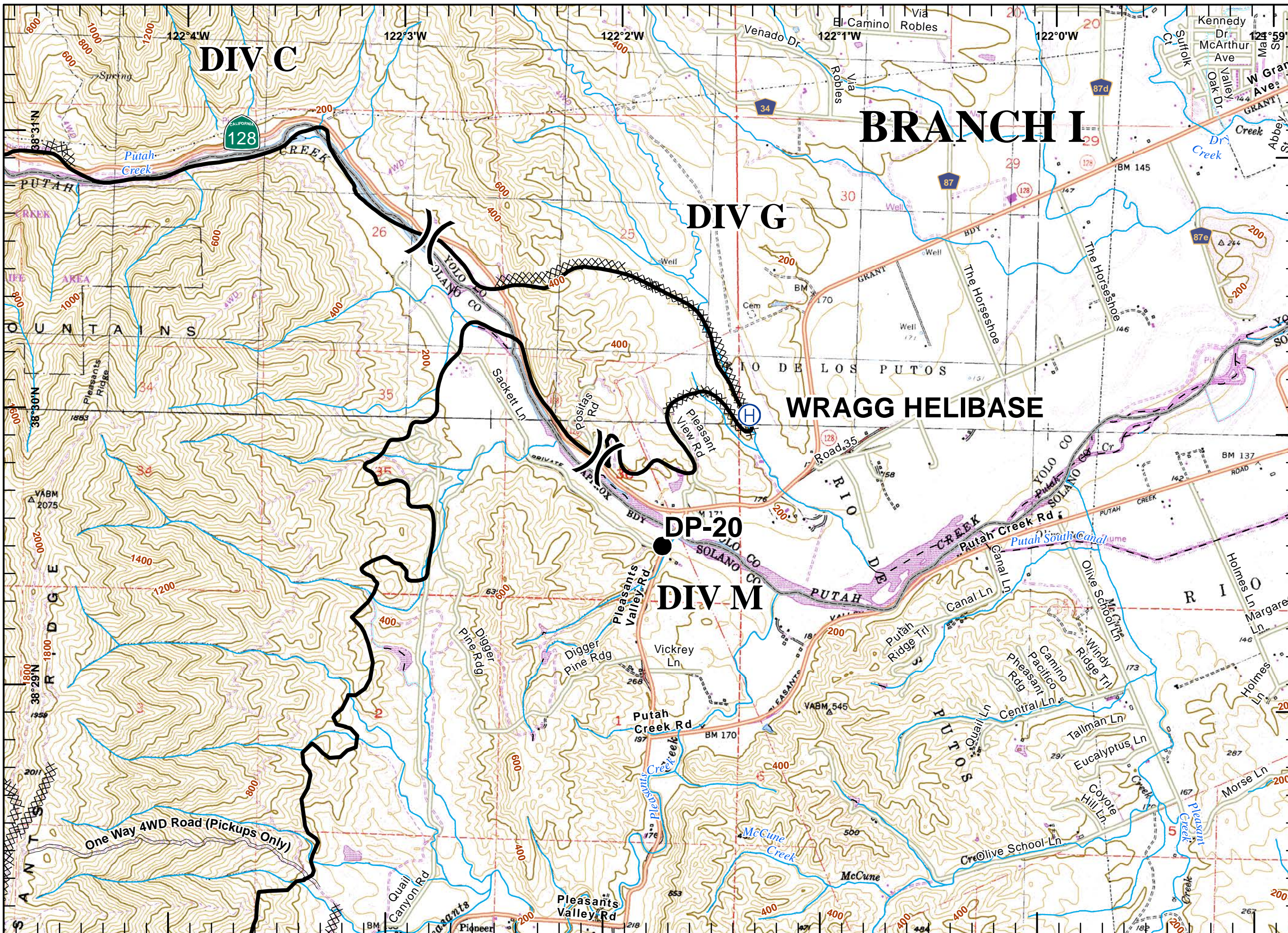
- Division
- Branch
- Drop Point
- Fire Origin
- Helibase
- Helispot
- Repeater
- Completed Line
- Completed Dozer Line
- Uncontrolled Fire Edge



Miles



Team 6 GIS
 August 01, 2015
 1924 Hours



BRANCH I

DIV G

WRAGG HELIBASE

DP-20

DIV M

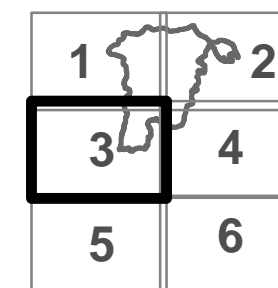
DIV C



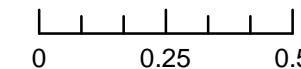
IAP MAP

Wragg Incident
 CA LNU 006678
 August 2, 2015
 8,051 Acres
 Nad 83
 Page 3

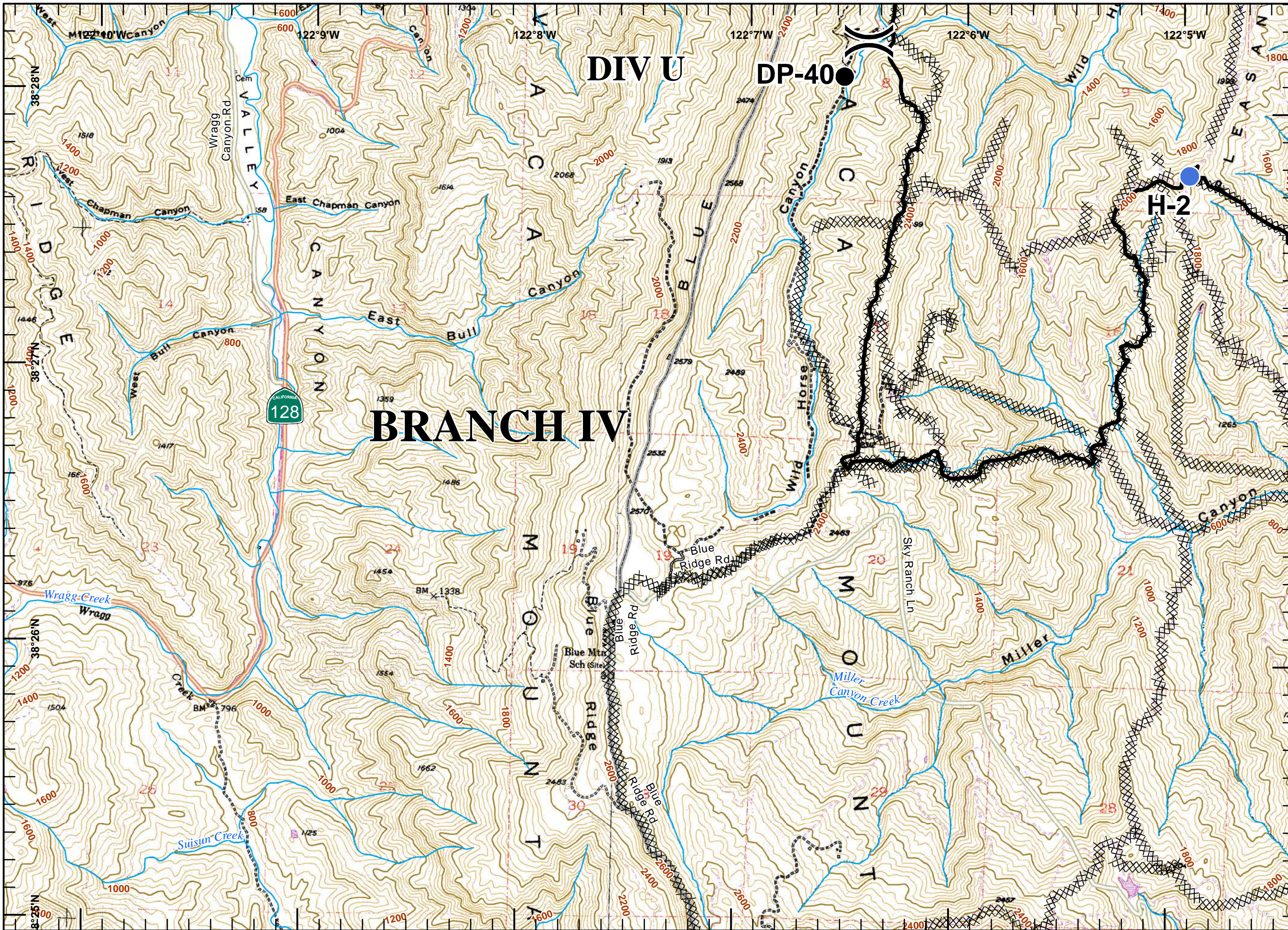
- Division
- Branch
- Drop Point
- Fire Origin
- Helibase
- Helispot
- Repeater
- Completed Line
- Completed Dozer Line
- Uncontrolled Fire Edge



Miles



Team 6 GIS
 August 01, 2015
 1925 Hours

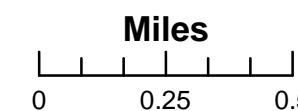
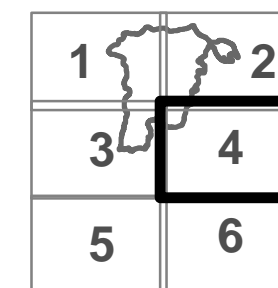




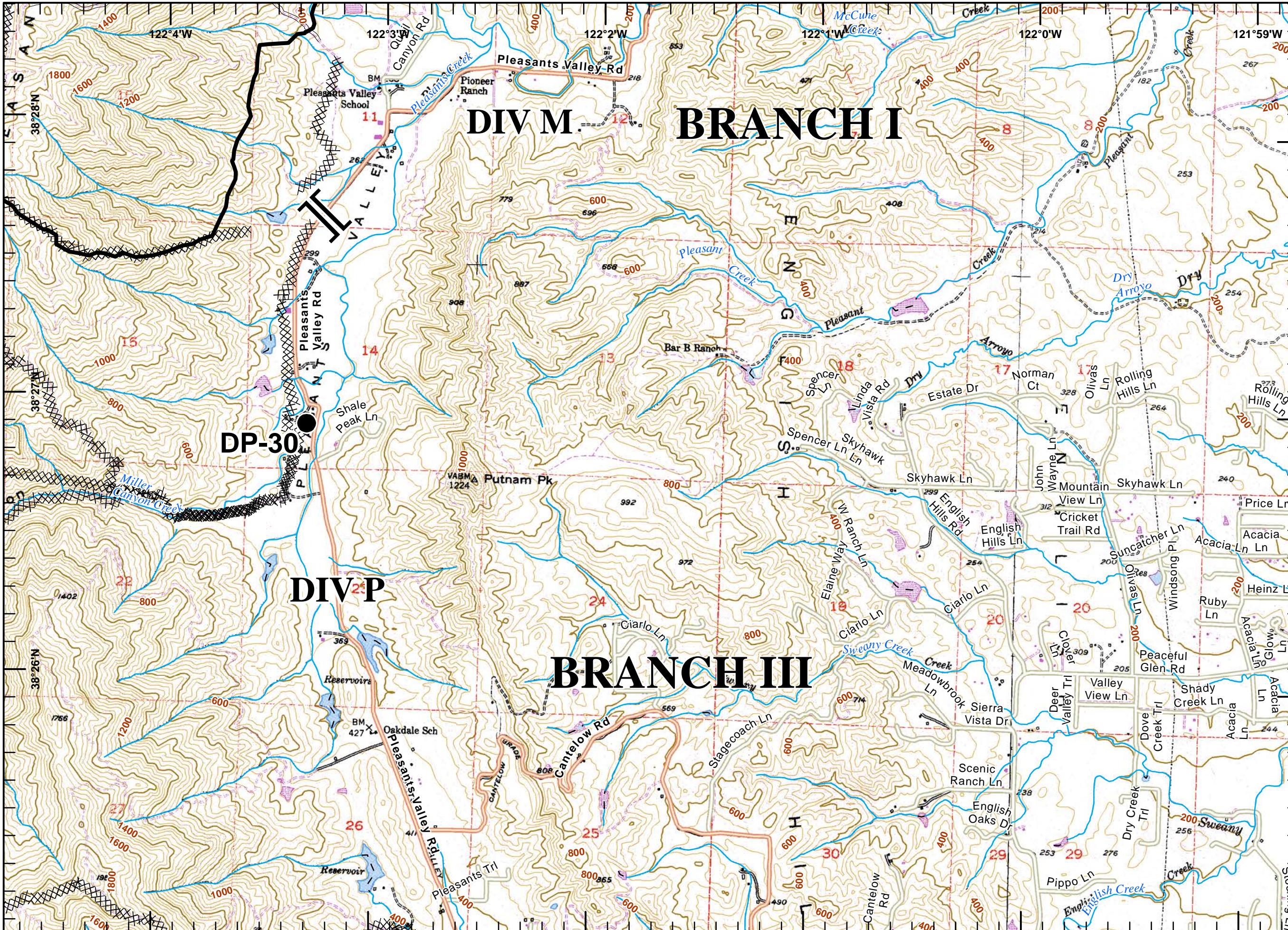
IAP MAP

Wragg Incident
 CA LNU 006678
 August 2, 2015
 8,051 Acres
 Nad 83
 Page 4

- Division
- Branch
- Drop Point
- Fire Origin
- Helibase
- Helispot
- Repeater
- Completed Line
- Completed Dozer Line
- Uncontrolled Fire Edge



Team 6 GIS
 August 01, 2015
 1925 Hours

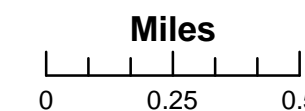
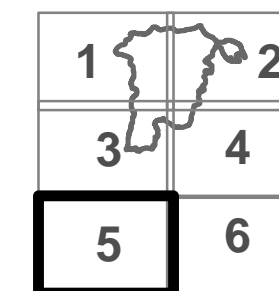




IAP MAP

Wragg Incident
 CA LNU 006678
 August 2, 2015
 8,051 Acres
 Nad 83
 Page 5

- Division
- Branch
- Drop Point
- Fire Origin
- Helibase
- Helispot
- Repeater
- Completed Line
- Completed Dozer Line
- Uncontrolled Fire Edge



Team 6 GIS
 August 01, 2015
 1925 Hours

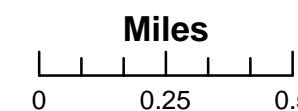
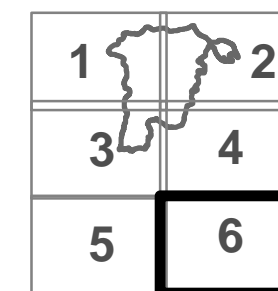




IAP MAP

Wragg Incident
 CA LNU 006678
 August 2, 2015
 8,051 Acres
 Nad 83
 Page 6

- Division
- Branch
- Drop Point
- Fire Origin
- Helibase
- Helispot
- Repeater
- Completed Line
- Completed Dozer Line
- Uncontrolled Fire Edge



Team 6 GIS
 August 01, 2015
 1926 Hours

