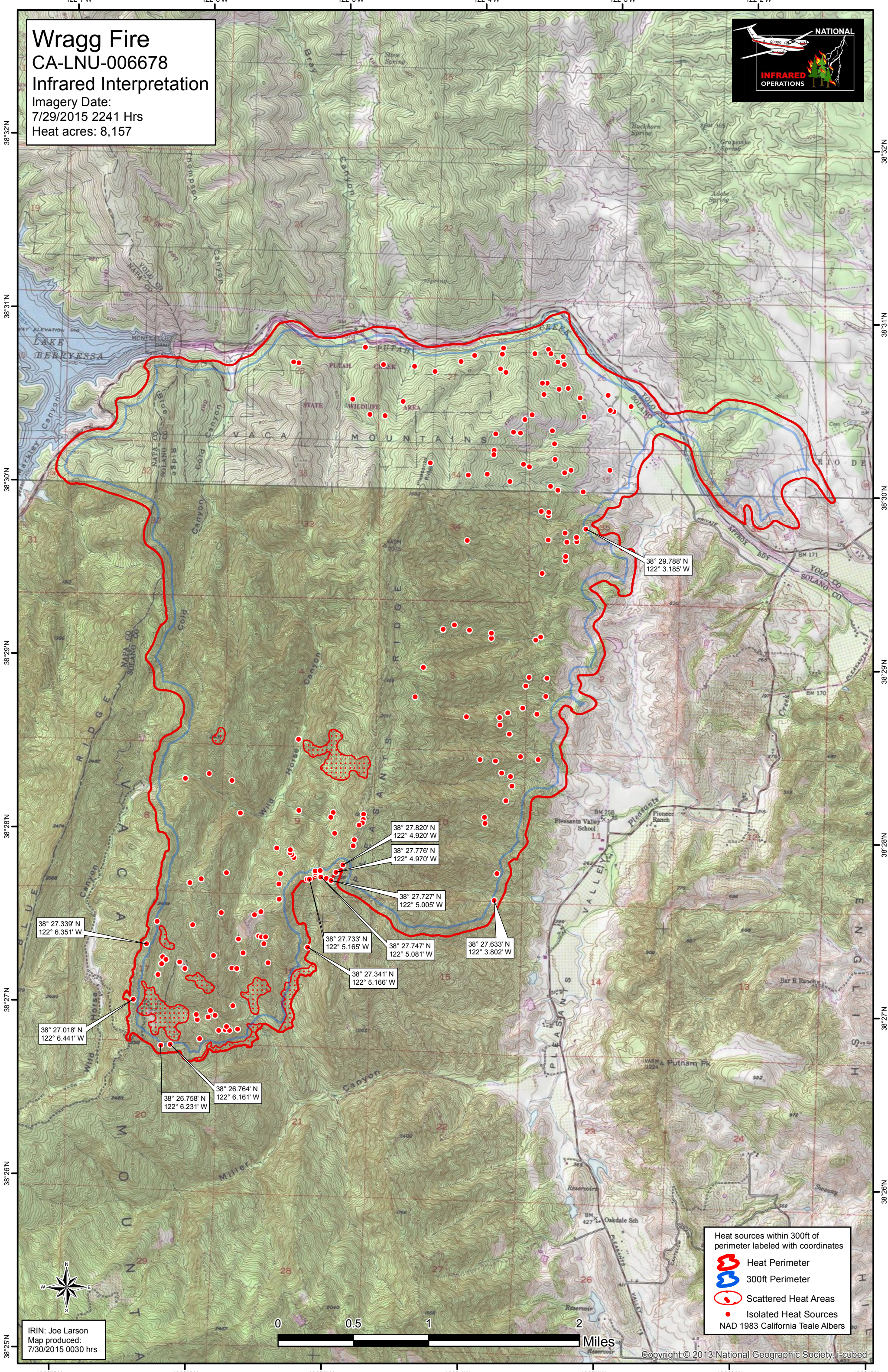


Wragg Fire
CA-LNU-006678
Infrared Interpretation
 Imagery Date:
 7/29/2015 2241 Hrs
 Heat acres: 8,157



38° 27.339' N
122° 6.351' W

38° 27.018' N
122° 6.441' W

38° 26.758' N
122° 6.231' W

38° 26.764' N
122° 6.161' W

38° 27.341' N
122° 5.166' W

38° 27.820' N
122° 4.920' W

38° 27.776' N
122° 4.970' W

38° 27.727' N
122° 5.005' W

38° 27.747' N
122° 5.081' W

38° 27.633' N
122° 3.802' W

38° 29.788' N
122° 3.185' W

- Heat sources within 300ft of perimeter labeled with coordinates
- Heat Perimeter
- 300ft Perimeter
- Scattered Heat Areas
- Isolated Heat Sources
- NAD 1983 California Teale Albers

IRIN: Joe Larson
 Map produced:
 7/30/2015 0030 hrs

