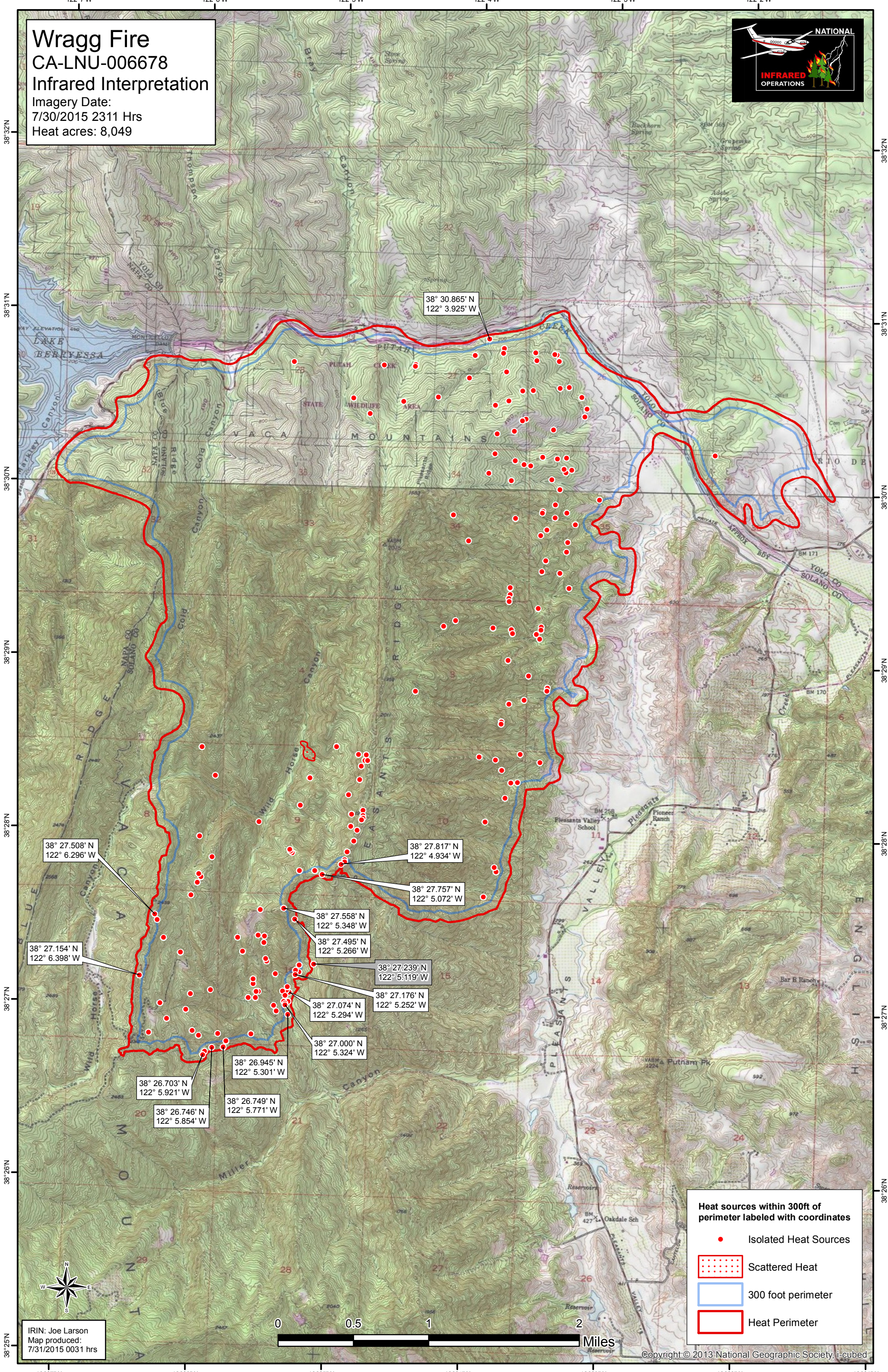


Wragg Fire
CA-LNU-006678
Infrared Interpretation
 Imagery Date:
 7/30/2015 2311 Hrs
 Heat acres: 8,049



38° 30.865' N
 122° 3.925' W

38° 27.508' N
 122° 6.296' W

38° 27.154' N
 122° 6.398' W

38° 26.703' N
 122° 5.921' W

38° 26.746' N
 122° 5.854' W

38° 26.945' N
 122° 5.301' W

38° 26.749' N
 122° 5.771' W

38° 27.558' N
 122° 5.348' W

38° 27.495' N
 122° 5.266' W

38° 27.074' N
 122° 5.294' W

38° 27.000' N
 122° 5.324' W

38° 27.239' N
 122° 5.119' W

38° 27.176' N
 122° 5.252' W

38° 27.817' N
 122° 4.934' W

38° 27.757' N
 122° 5.072' W

Heat sources within 300ft of perimeter labeled with coordinates

- Isolated Heat Sources
- Scattered Heat
- 300 foot perimeter
- Heat Perimeter

IRIN: Joe Larson
 Map produced:
 7/31/2015 0031 hrs

