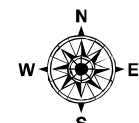




IAP Page Index Map

Rocky Incident
CA-LNU-006984
July 31, 2015
0700-0700
NAD 83

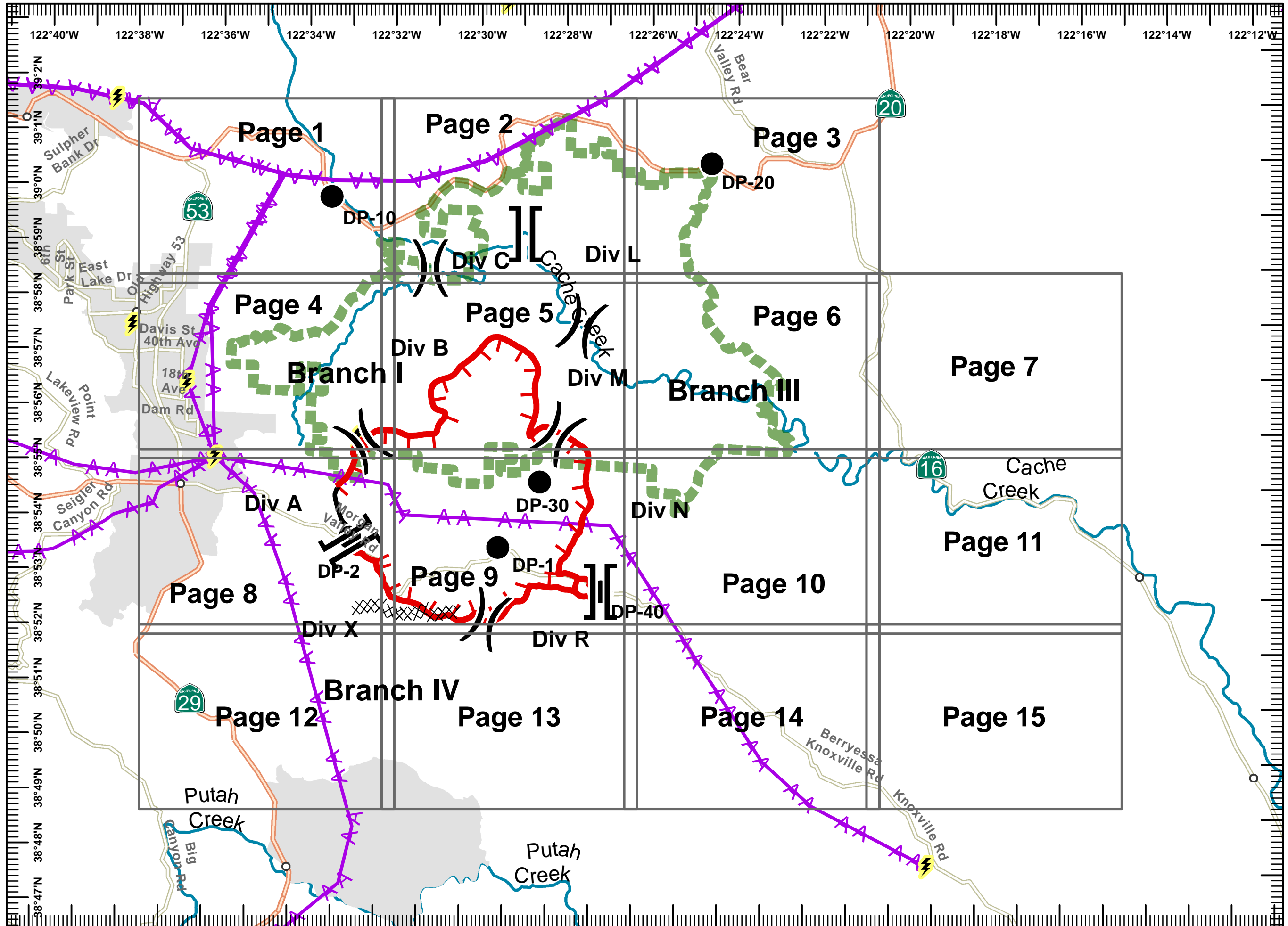
- Division
- Branch
- Drop Point
- Completed Line
- Uncontrolled Fire Edge
- Completed Dozer Line
- Transmission Lines
- Cash Creek Wilderness
- Substations



Miles
0 0.5 1 2

1:120,000

Postler
July 31, 2015
0218

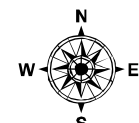




IAP MAP
 Rocky Incident
 CA-LNU-006984
 July 31, 2015
 0700-0700
 NAD 83
 Page 1 of 15

- Division
- Branch
- Drop Point
- Completed Line
- Uncontrolled Fire Edge
- Completed Dozer Line
- Transmission Lines
- Cash Creek Wilderness Substations

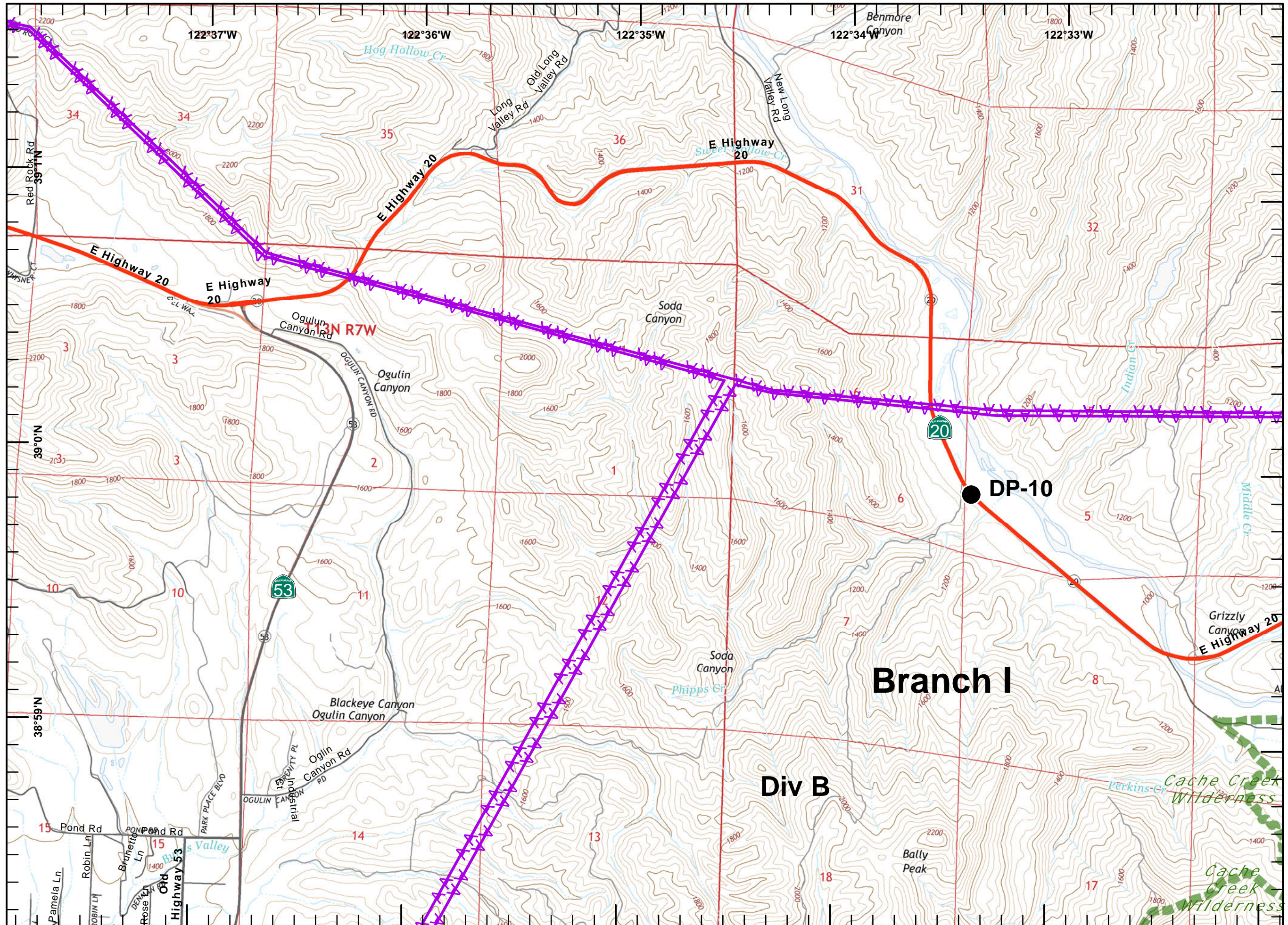
1	2	3
4	5	6
8	9	10
12	13	14



Miles
 0 0.125 0.25 0.5

1:24,000

Postler
 July 31, 2015
 0222

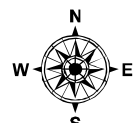




IAP MAP
 Rocky Incident
 CA-LNU-006984
 July 31, 2015
 0700-0700
 NAD 83
 Page 2 of 15

- Division
- Branch
- Drop Point
- Completed Line
- Uncontrolled Fire Edge
- Completed Dozer Line
- Transmission Lines
- Cash Creek Wilderness Substations

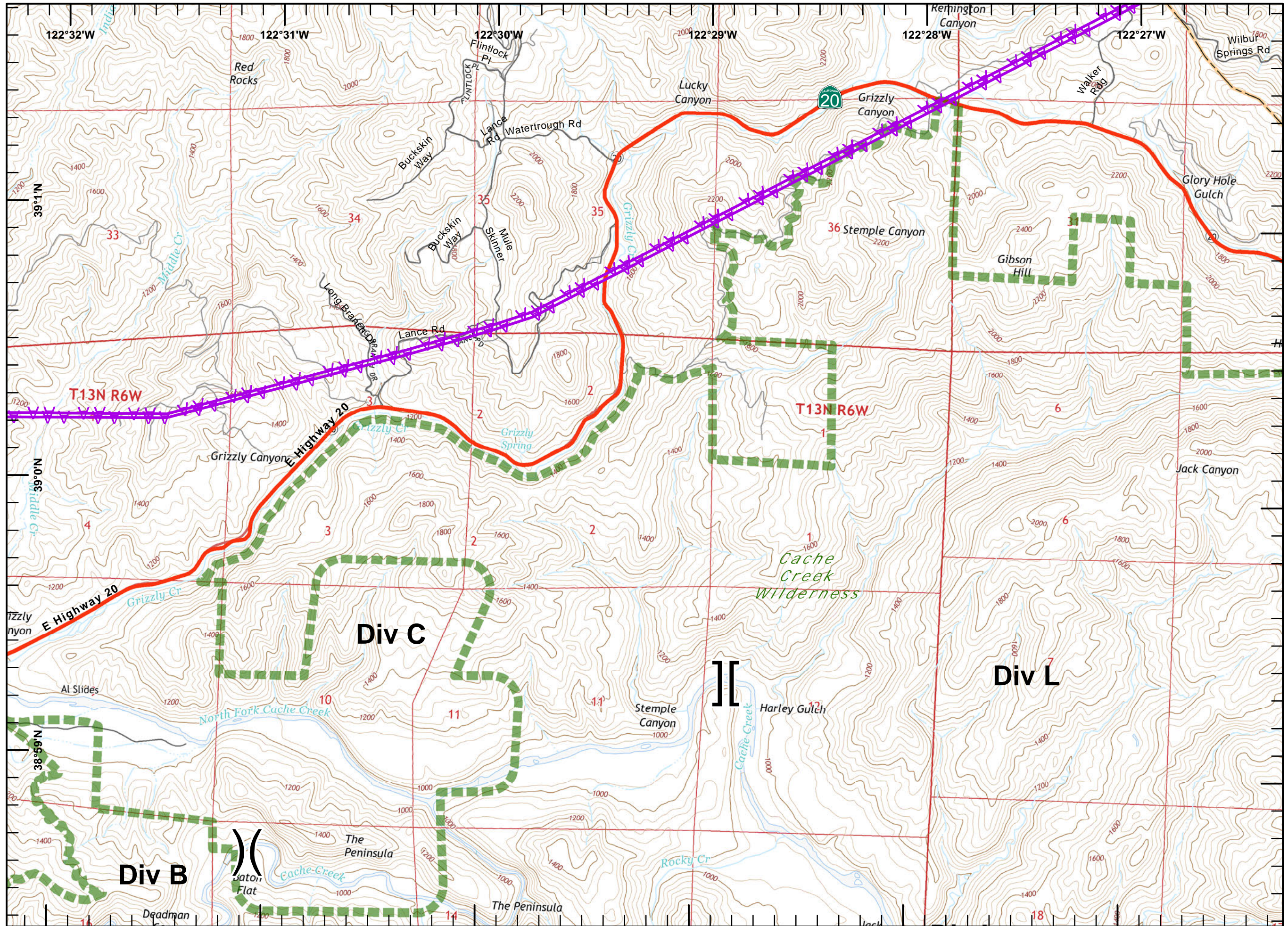
1	2	3	
4	5	6	7
8	9	10	11
12	13	14	15



Miles
 0 0.125 0.25 0.5

1:24,000

Postler
 July 31, 2015
 0223

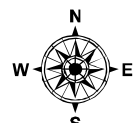




IAP MAP
 Rocky Incident
 CA-LNU-006984
 July 31, 2015
 0700-0700
 NAD 83
 Page 3 of 15

- Division
- Branch
- Drop Point
- Completed Line
- Uncontrolled Fire Edge
- Completed Dozer Line
- Transmission Lines
- Cash Creek Wilderness
- Substations

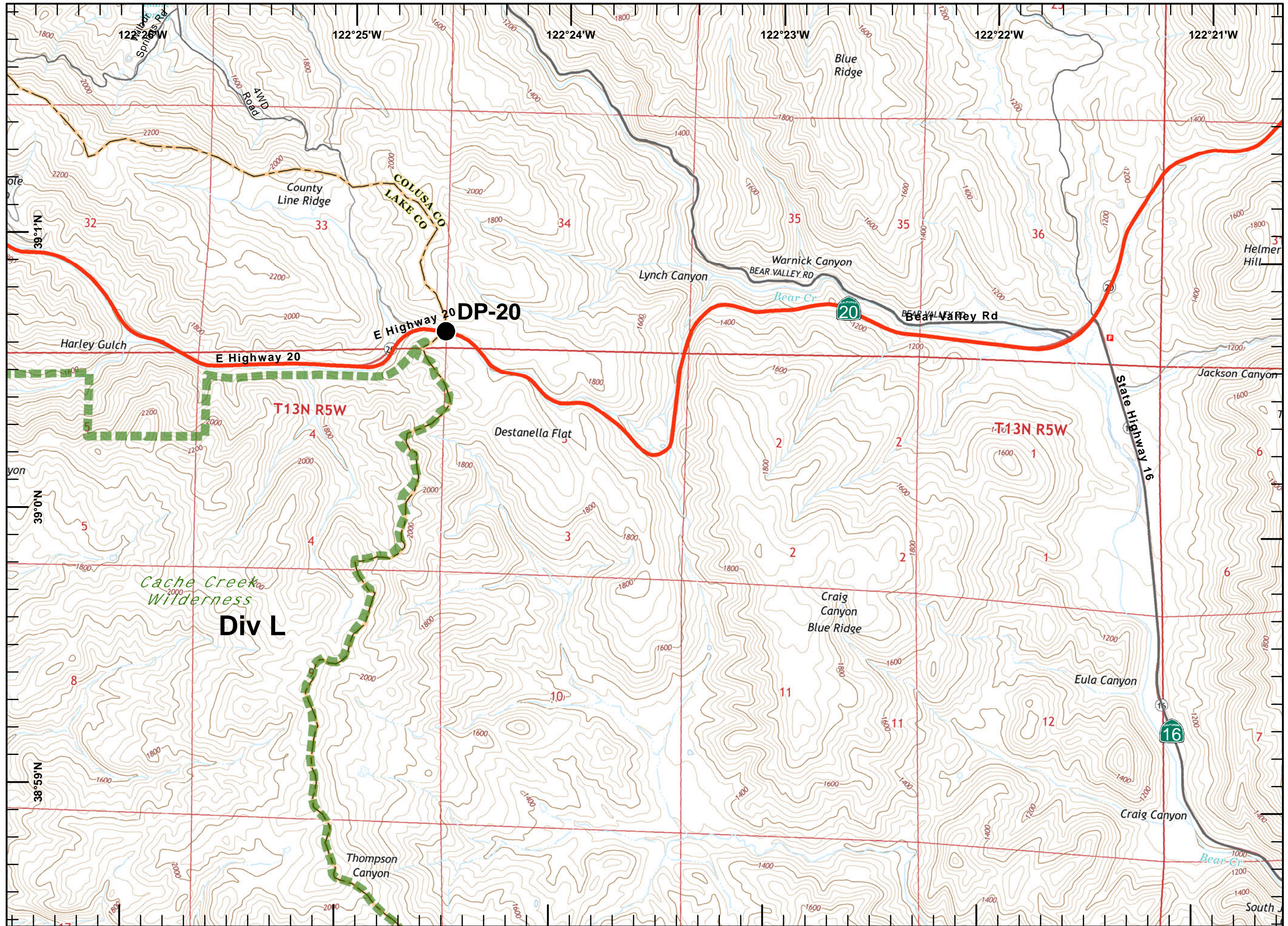
1	2	3	4
4	5	6	7
8	9	10	11
12	13	14	15



Miles
 0 0.125 0.25 0.5

1:24,000

Postler
 July 31, 2015
 0223

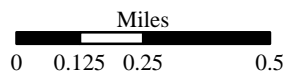
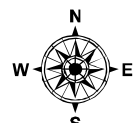




IAP MAP
 Rocky Incident
 CA-LNU-006984
 July 31, 2015
 0700-0700
 NAD 83
 Page 4 of 15

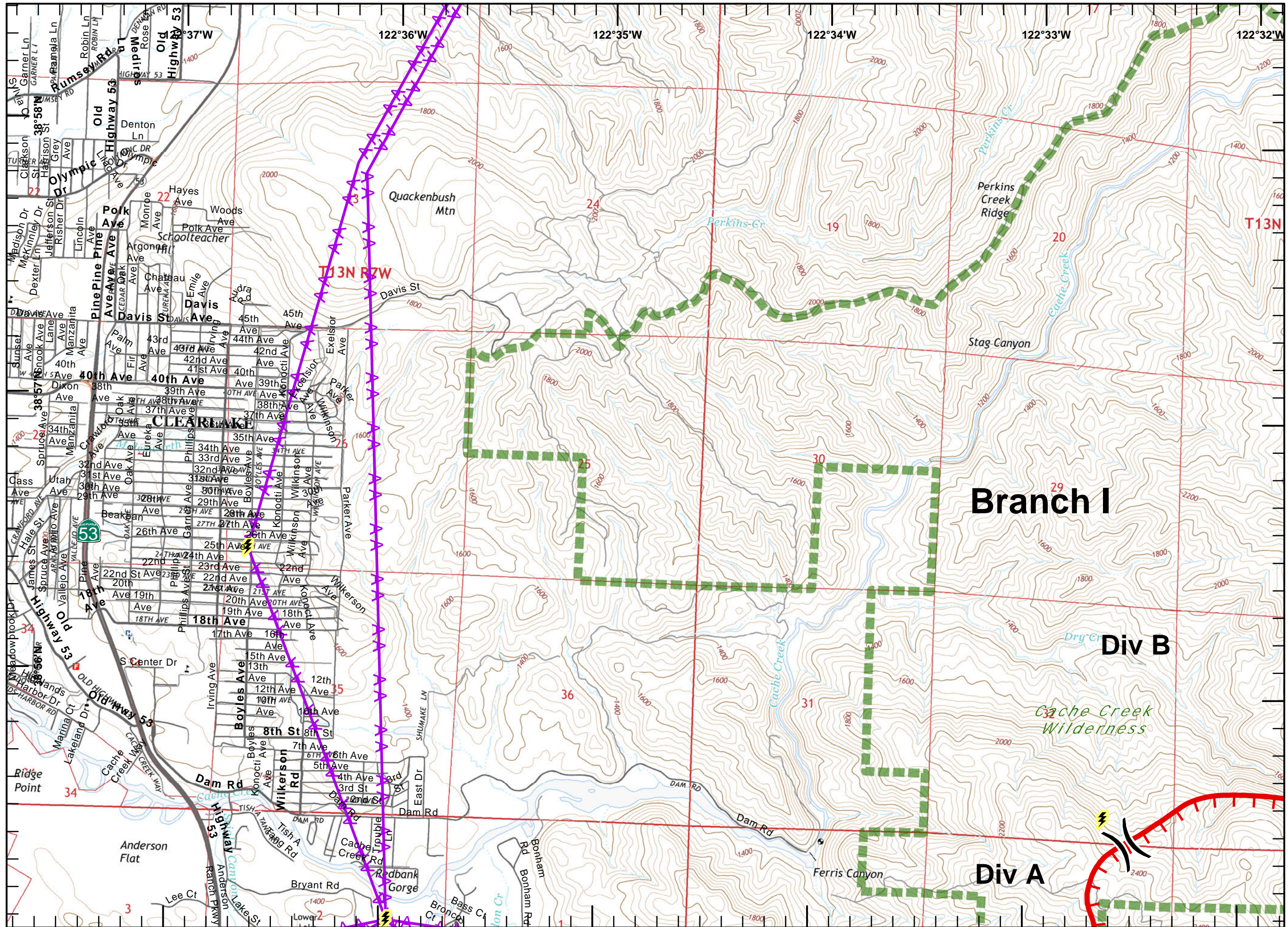
- Division
- Branch
- Drop Point
- Completed Line
- Uncontrolled Fire Edge
- Completed Dozer Line
- Transmission Lines
- Cash Creek Wilderness Substations

1	2	3
4	5	6
8	9	10
12	13	14



1:24,000

Poster
 July 31, 2015
 0223

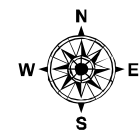




IAP MAP
 Rocky Incident
 CA-LNU-006984
 July 31, 2015
 0700-0700
 NAD 83
 Page 5 of 15

- Division
- Branch
- Drop Point
- Completed Line
- Uncontrolled Fire Edge
- Completed Dozer Line
- Transmission Lines
- Cash Creek Wilderness Substations

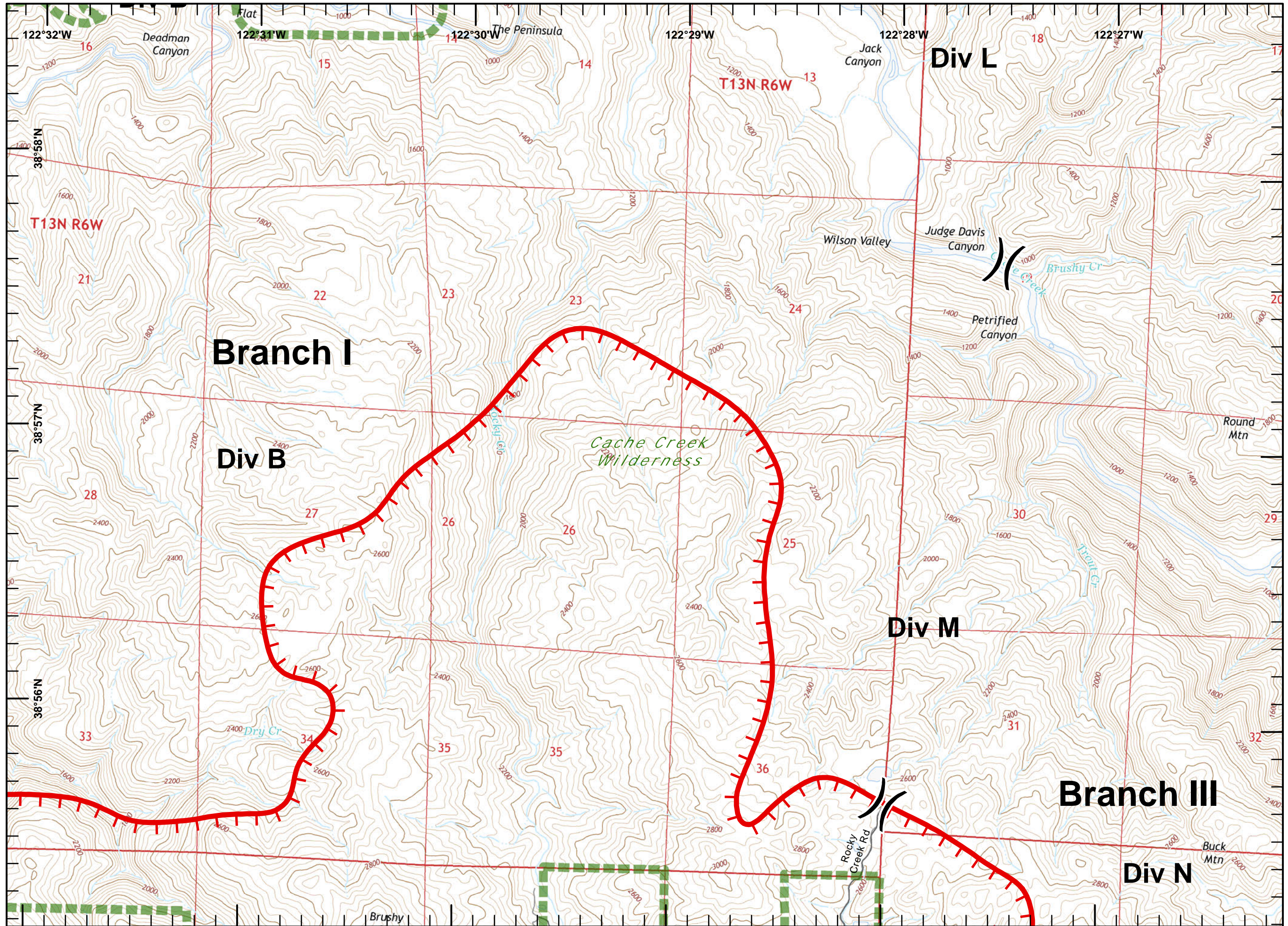
1	2	3	
4	5	6	7
8	9	10	11
12	13	14	15



Miles
 0 0.125 0.25 0.5

1:24,000

Postler
 July 31, 2015
 0223

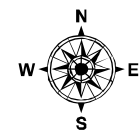




IAP MAP
 Rocky Incident
 CA-LNU-006984
 July 31, 2015
 0700-0700
 NAD 83
 Page 6 of 15

- Division
- Branch
- Drop Point
- Completed Line
- Uncontrolled Fire Edge
- Completed Dozer Line
- Transmission Lines
- Cash Creek Wilderness Substations

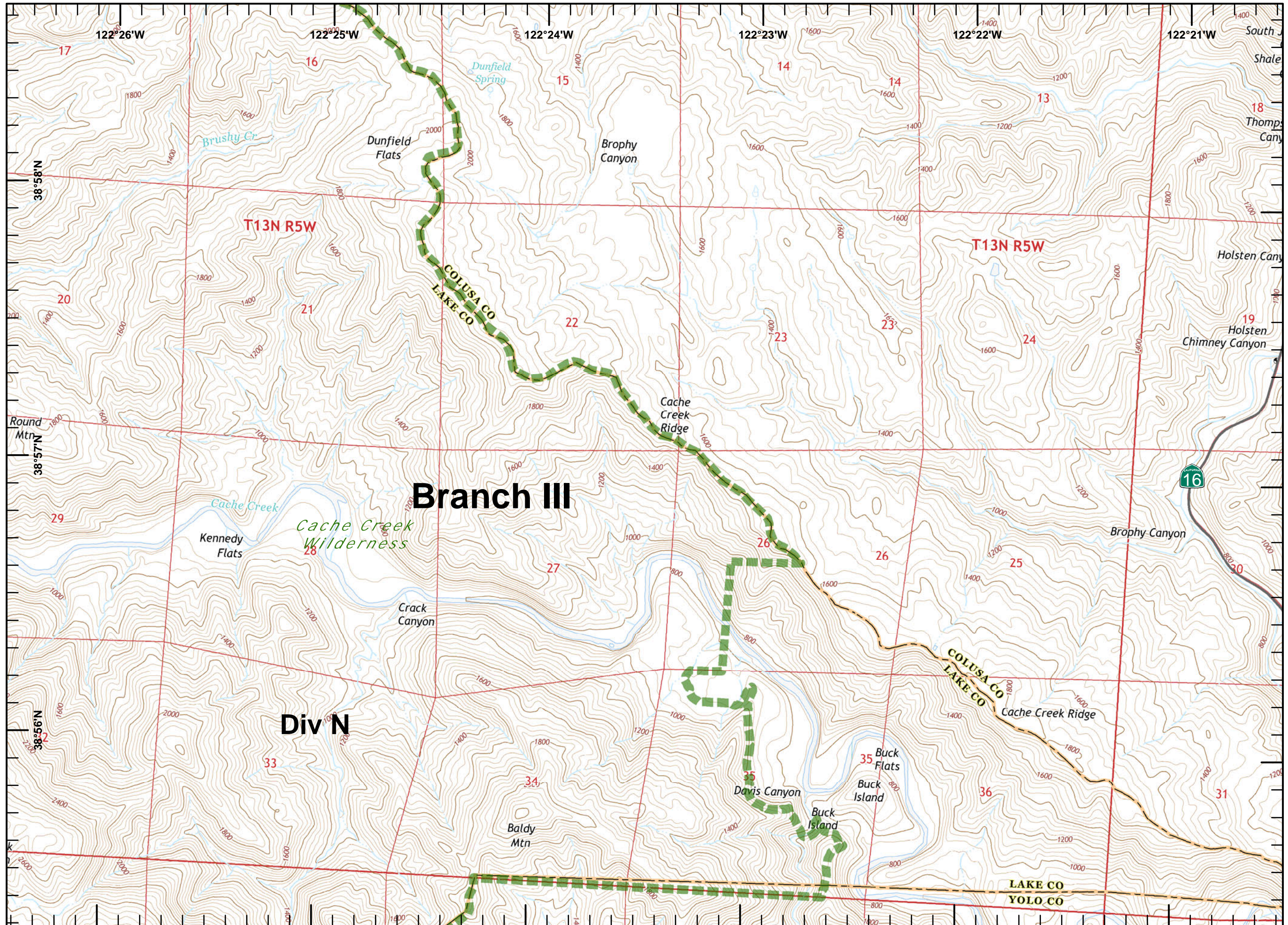
1	2	3
4	5	6
8	9	10
12	13	14



Miles
 0 0.125 0.25 0.5

1:24,000

Postler
 July 31, 2015
 0223

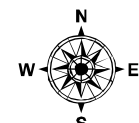




IAP MAP
 Rocky Incident
 CA-LNU-006984
 July 31, 2015
 0700-0700
 NAD 83
 Page 7 of 15

- Division
- Branch
- Drop Point
- Completed Line
- Uncontrolled Fire Edge
- Completed Dozer Line
- Transmission Lines
- Cash Creek Wilderness Substations

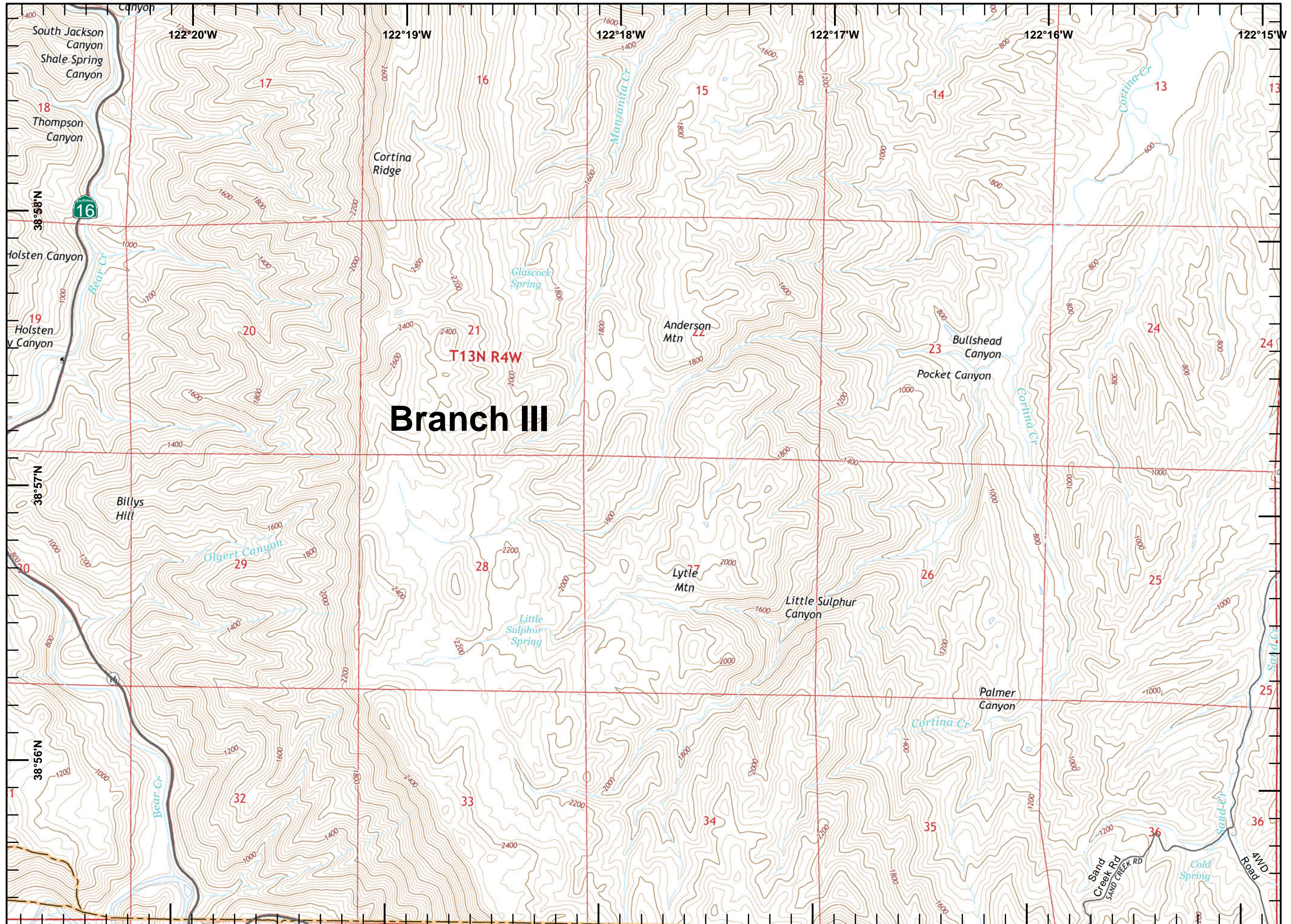
1	2	3	4
4	5	6	7
8	9	10	11
12	13	14	15



Miles
 0 0.125 0.25 0.5

1:24,000

Postler
 July 31, 2015
 0224

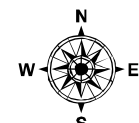




IAP MAP
 Rocky Incident
 CA-LNU-006984
 July 31, 2015
 0700-0700
 NAD 83
 Page 8 of 15

- Division
- Branch
- Drop Point
- Completed Line
- Uncontrolled Fire Edge
- Completed Dozer Line
- Transmission Lines
- Cash Creek Wilderness Substations

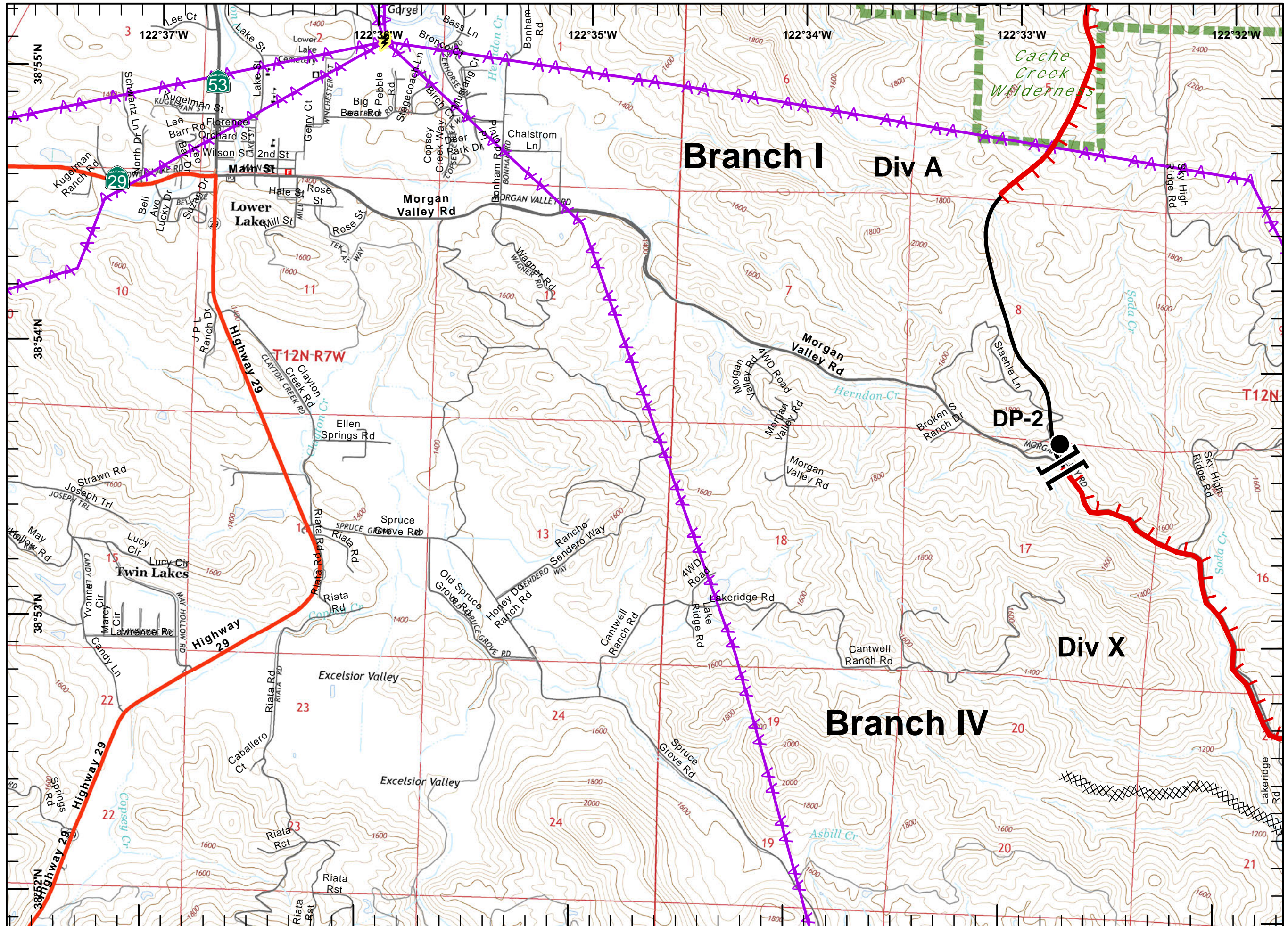
1	2	3
4	5	6
8	9	10
12	13	14



Miles
 0 0.125 0.25 0.5

1:24,000

Postler
 July 31, 2015
 0224

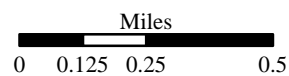
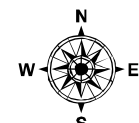




IAP MAP
 Rocky Incident
 CA-LNU-006984
 July 31, 2015
 0700-0700
 NAD 83
 Page 9 of 15

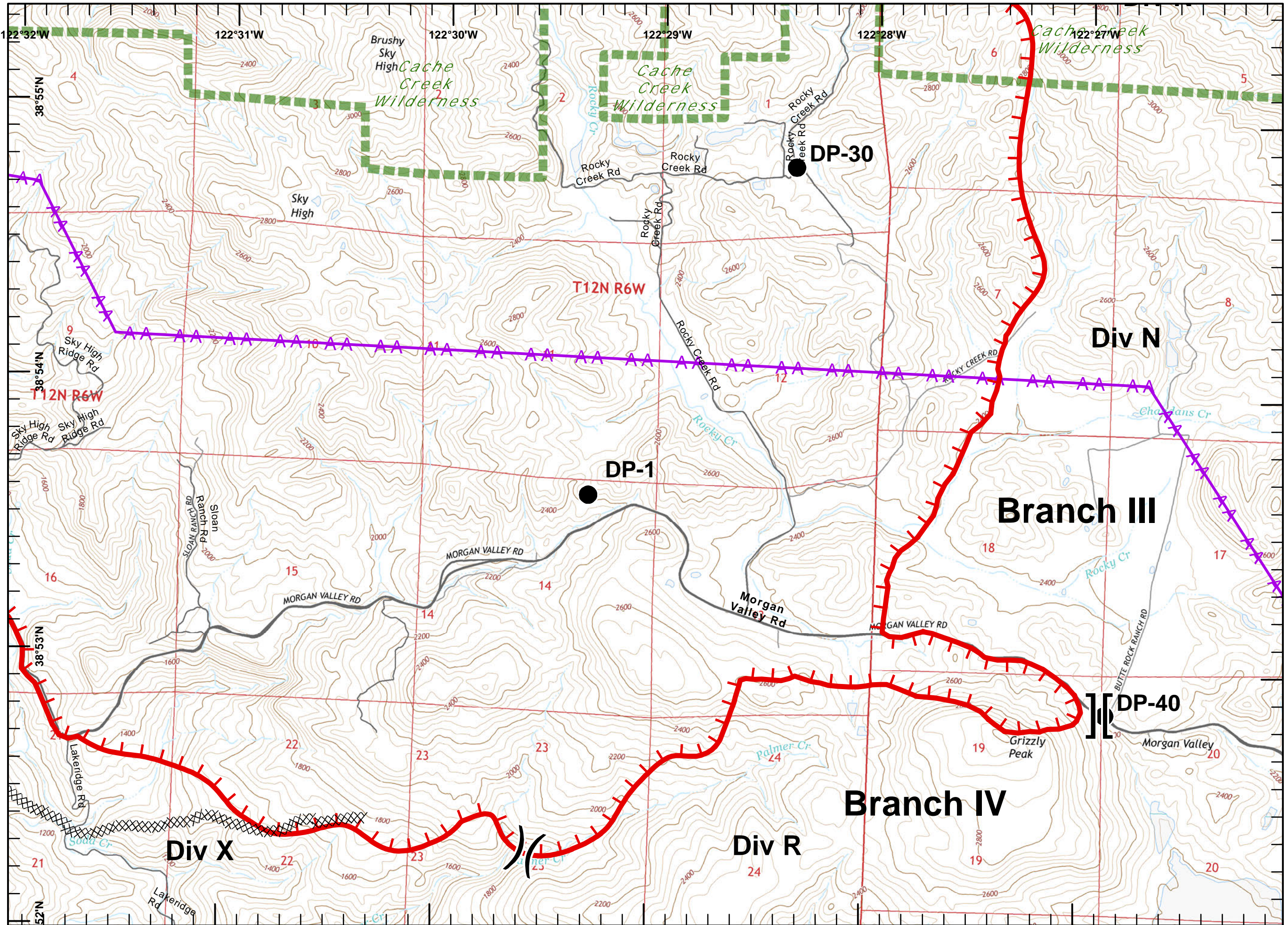
- Division
- Branch
- Drop Point
- Completed Line
- Uncontrolled Fire Edge
- Completed Dozer Line
- Transmission Lines
- Cash Creek Wilderness Substations

1	2	3
4	5	6
8	9	10
12	13	14



1:24,000

Postler
 July 31, 2015
 0224





IAP MAP

Rocky Incident
CA-LNU-006984

July 31, 2015

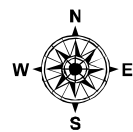
0700-0700

NAD 83

Page 10 of 15

- Division
- Branch
- Drop Point
- Completed Line
- Uncontrolled Fire Edge
- Completed Dozer Line
- Transmission Lines
- Cash Creek Wilderness Substations

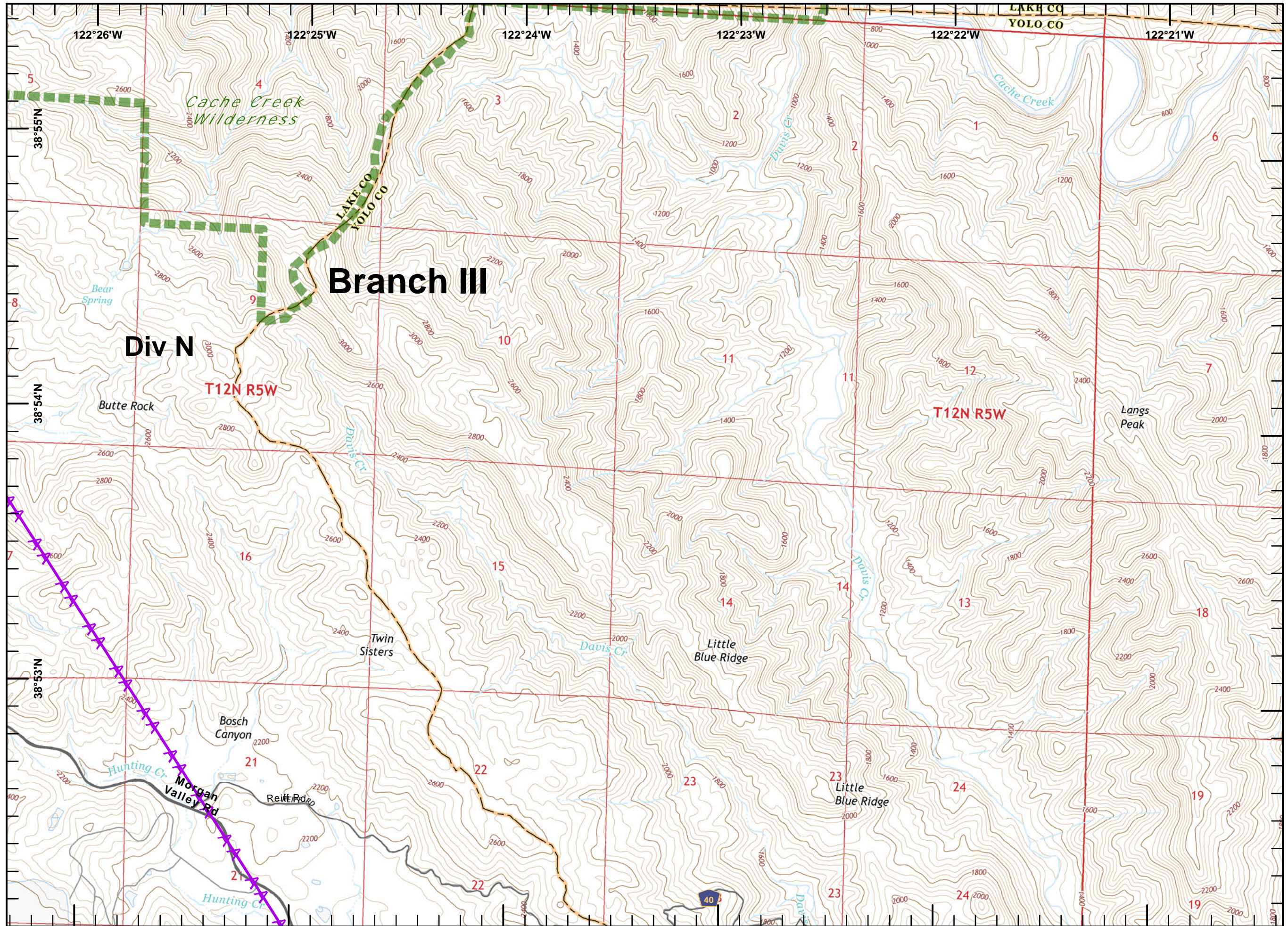
1	2	3	
4	5	6	7
8	9	10	11
12	13	14	15



Miles
0 0.125 0.25 0.5

1:24,000

Postler
July 31, 2015
0224





IAP MAP

Rocky Incident
CA-LNU-006984

July 31, 2015

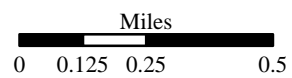
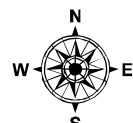
0700-0700

NAD 83

Page 11 of 15

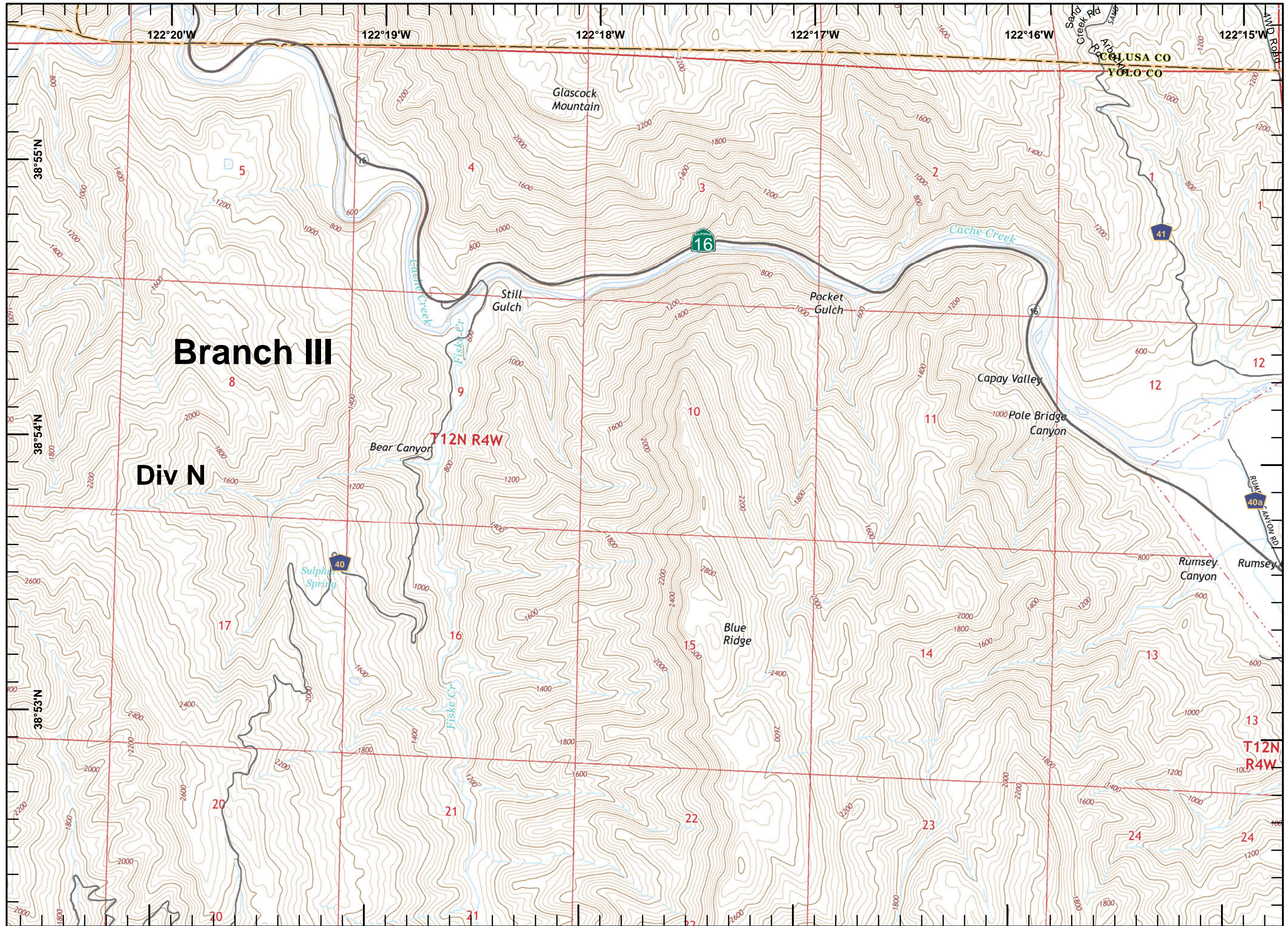
- Division
- Branch
- Drop Point
- Completed Line
- Uncontrolled Fire Edge
- Completed Dozer Line
- Transmission Lines
- Cash Creek Wilderness Substations

1	2	3	
4	5	6	7
8	9	10	11
12	13	14	15



1:24,000

Postler
July 31, 2015
0224





IAP MAP

Rocky Incident
CA-LNU-006984

July 31, 2015

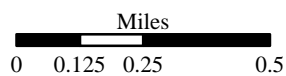
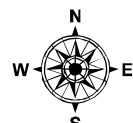
0700-0700

NAD 83

Page 12 of 15

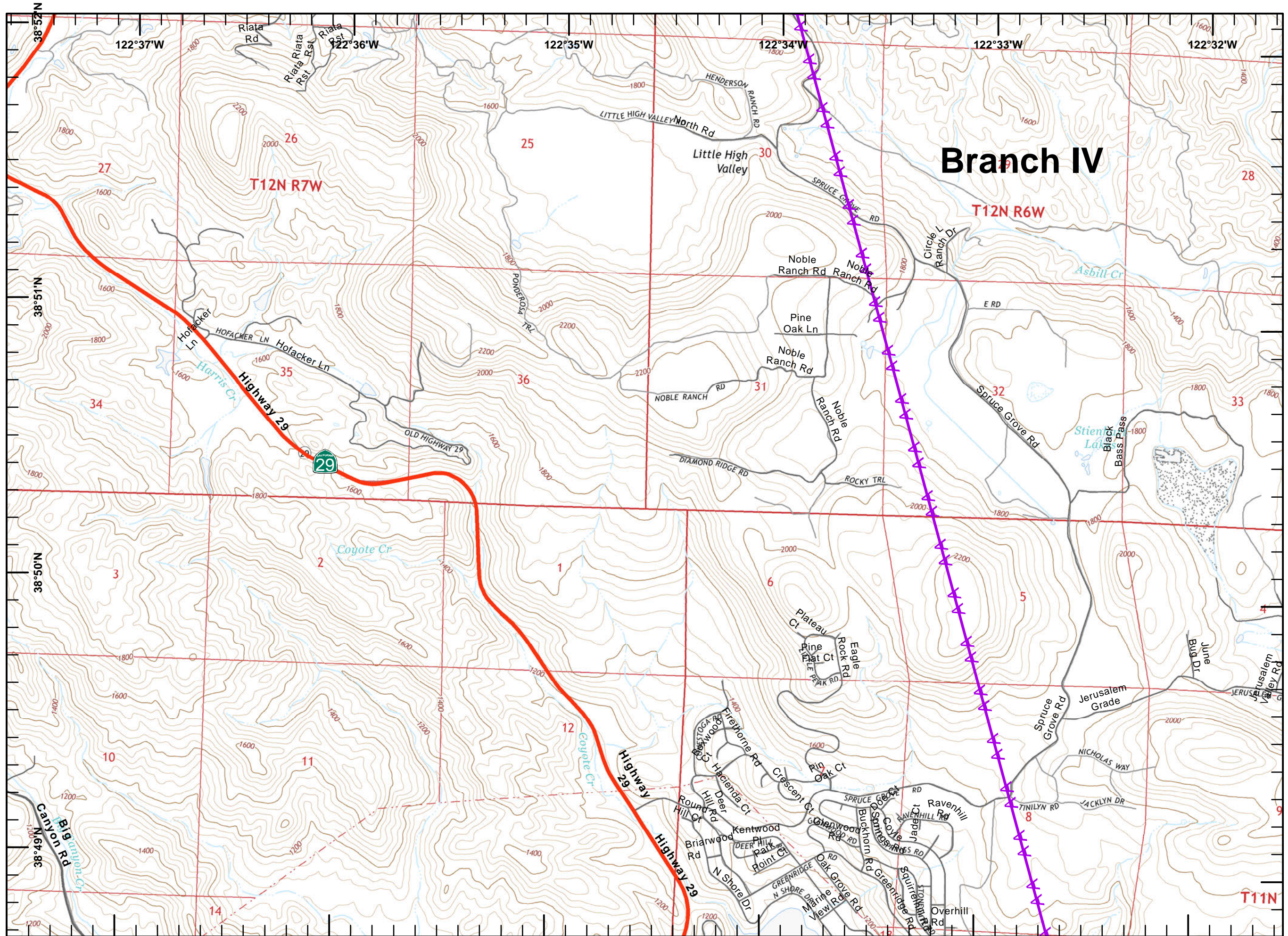
- Division
- Branch
- Drop Point
- Completed Line
- Uncontrolled Fire Edge
- Completed Dozer Line
- Transmission Lines
- Cash Creek Wilderness Substations

1	2	3		
4	5	6	7	
8	9	10	11	
12	13	14	15	



1:24,000

Postler
July 31, 2015
0224

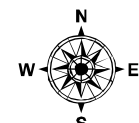




IAP MAP
 Rocky Incident
 CA-LNU-006984
 July 31, 2015
 0700-0700
 NAD 83
 Page 13 of 15

- Division
- Branch
- Drop Point
- Completed Line
- Uncontrolled Fire Edge
- Completed Dozer Line
- Transmission Lines
- Cash Creek Wilderness Substations

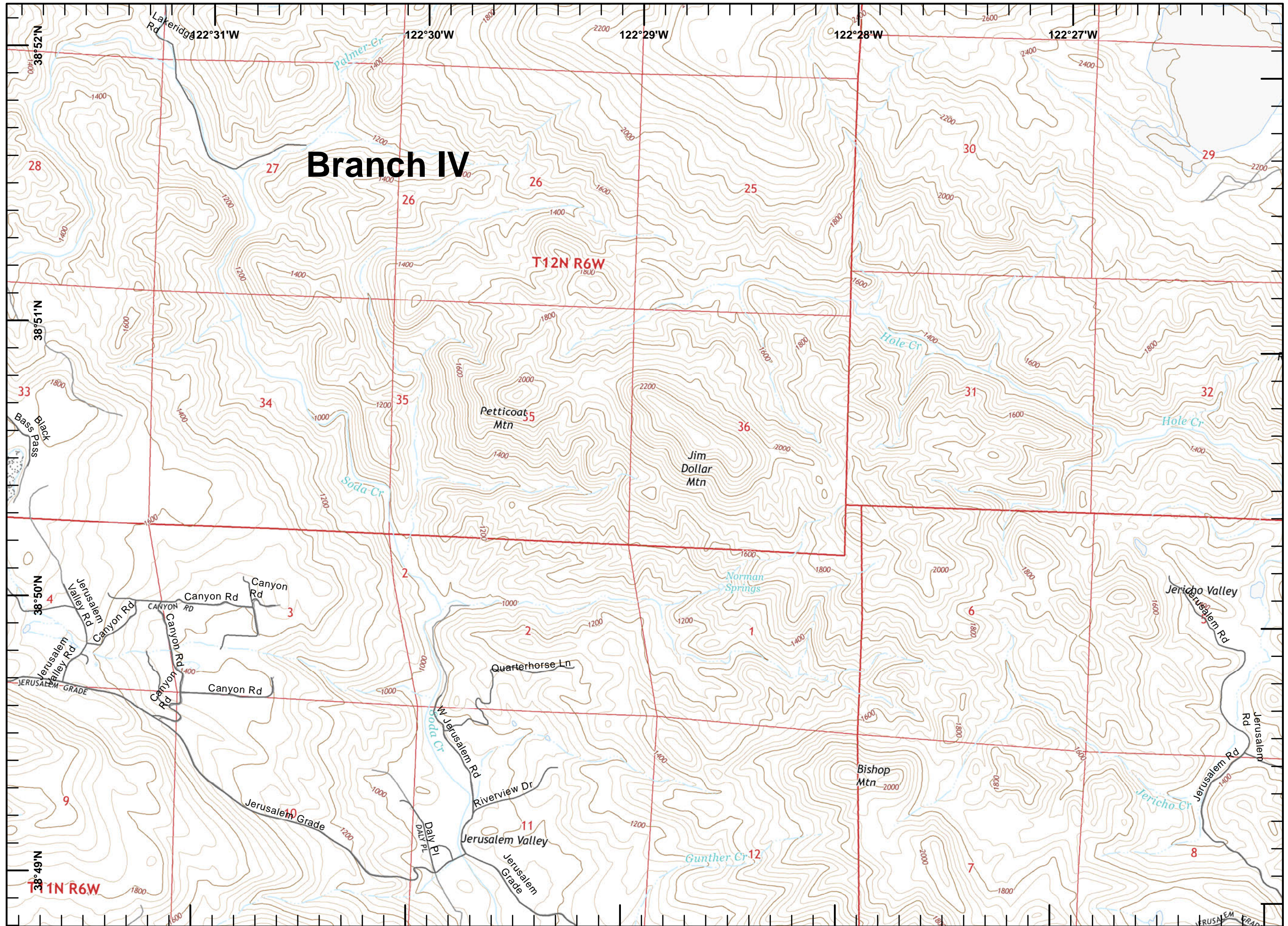
1	2	3		
4	5	6	7	
8	9	10	11	
12	13	14	15	



Miles
 0 0.125 0.25 0.5

1:24,000

Postler
 July 31, 2015
 0225

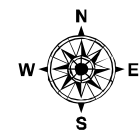




IAP MAP
 Rocky Incident
 CA-LNU-006984
 July 31, 2015
 0700-0700
 NAD 83
 Page 14 of 15

- Division
- Branch
- Drop Point
- Completed Line
- Uncontrolled Fire Edge
- Completed Dozer Line
- Transmission Lines
- Cash Creek Wilderness Substations

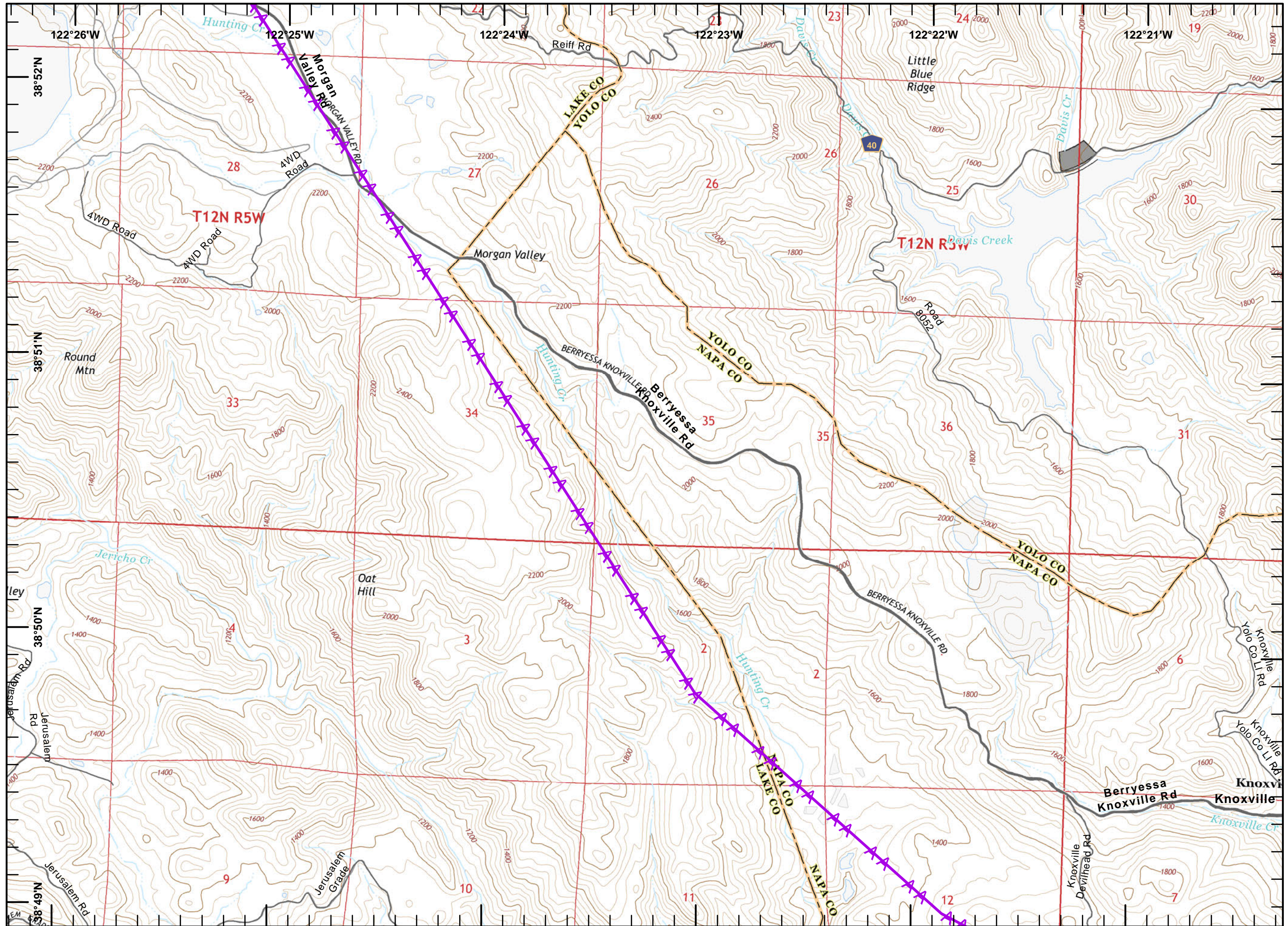
1	2	3
4	5	6
8	9	10
12	13	14



Miles
 0 0.125 0.25 0.5

1:24,000

Postler
 July 31, 2015
 0225





IAP MAP

Rocky Incident
CA-LNU-006984

July 31, 2015

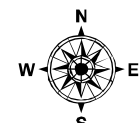
0700-0700

NAD 83

Page 15 of 15

- Division
- Branch
- Drop Point
- Completed Line
- Uncontrolled Fire Edge
- Completed Dozer Line
- Transmission Lines
- Cash Creek Wilderness Substations

1	2	3
4	5	6
8	9	10
12	13	14
		15



Miles
0 0.125 0.25 0.5

1:24,000

Postler
July 31, 2015
0225

