

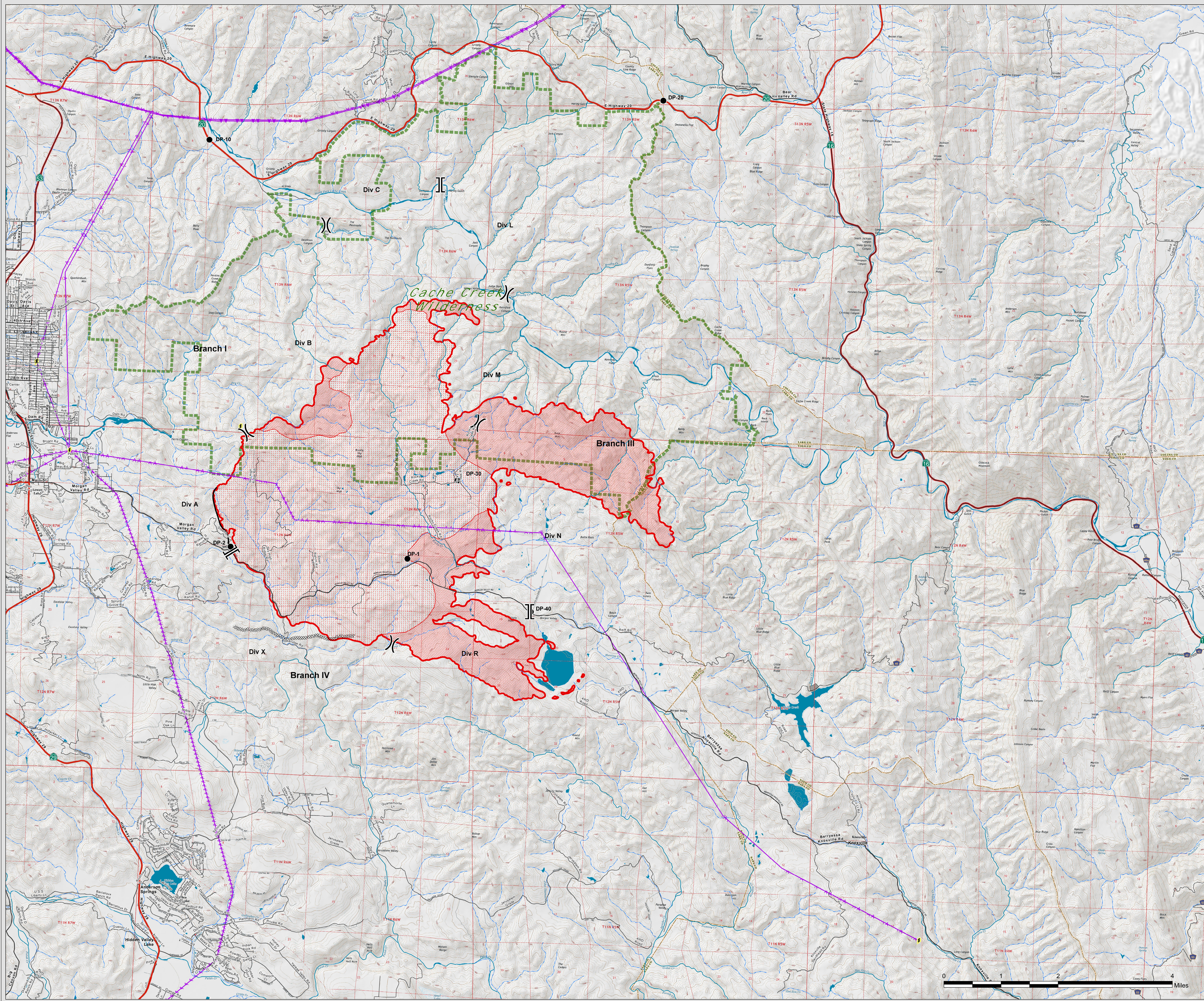


# Rocky Incident CA-LNU-006984

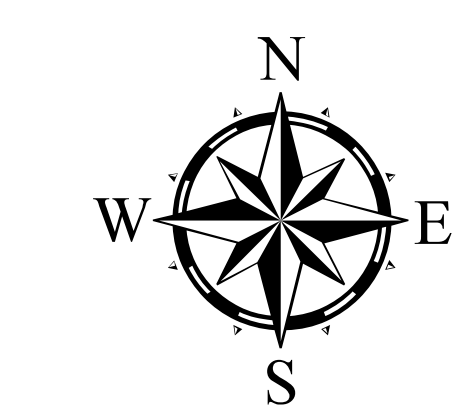
## Operations Map

7/31/2015

Infrared Mapping from  
7/30/2015  
23:28 hrs



- Division
- Branch
- Drop Point
- Uncontrolled Fire Edge
- Completed Dozer Line
- Completed Line
- Substations
- Transmission Lines
- Heat Perimeter
- Scattered Heat
- Intense Heat
- Cache Creek Wilderness



Datum: NAD 83 1:32,000

DISCLAIMER:  
The displayed incident data is approximate and should only be used for informational purposes. The information contained in reporting base layers was generated from GIS data maintained by different sources and agencies and is not necessarily accurate to mapping, surveying, or engineering.



Team 2 GIS and  
Deer Creek GIS  
July 31 2015  
06:16 hrs